

# V&V Reference Report

## L2 ASCDS Version : 8.5

Observation 59963 - L2 Version 3  
Chandra X-Ray Center

L2 Processing Date : Dec 12 2012

## Contents

<b>1</b>	<b>Front</b>	<b>2</b>
<b>2</b>	<b>OBI</b>	<b>3</b>
2.1	OBI . . . . .	3
2.1.1	Images . . . . .	3
2.1.2	Bias . . . . .	3
2.1.3	Parameters . . . . .	4
2.1.4	Events . . . . .	4
2.2	Compared Parameters . . . . .	5
2.3	Star Slots . . . . .	6
2.4	FID Slots . . . . .	6
<b>A</b>	<b>Summary</b>	<b>7</b>
A.1	Status . . . . .	7
A.2	Comments . . . . .	7

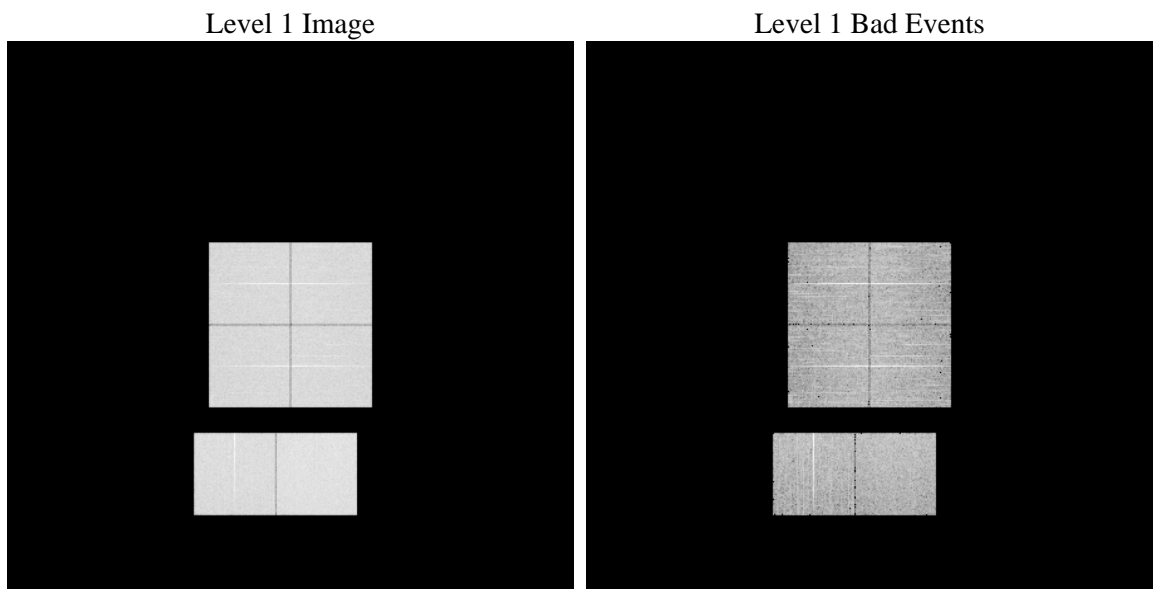
# 1 Front

seq_num	&#160	Sequence number
obs_id	59963	Observation id
title	ACIS-012367 diagnostics	Proposal title
observer	CHANDRA engineering request/realtime commanding	Principal investig
object	&#160	Source name
dtcycle	0	&#160
cycle	P	events from which exps? Prim/Second/Both
ra_targ	0.0	Observer's specified target RA [deg]
dec_targ	0.0	Observer's specified target Dec [deg]
ra_nom	52.977991536469	Nominal RA [deg]
dec_nom	-27.935642929091	Nominal Dec [deg]
roll_nom	357.22271000132	Nominal Roll [deg]
revision	3	Processing version of data
ontime	7801.5999709368	Sum of GTIs [s]
livetime	7702.8114145452	Livetime [s]
ontime0	6446.8304416835	Sum of GTIs [s]
ontime1	6569.9465140104	Sum of GTIs [s]
ontime2	6281.4579176605	Sum of GTIs [s]
ontime3	6313.9870703518	Sum of GTIs [s]
ontime6	6884.2408490181	Sum of GTIs [s]
ontime7	7801.5999709368	Sum of GTIs [s]
l2events	1067652	Number of level 2 events

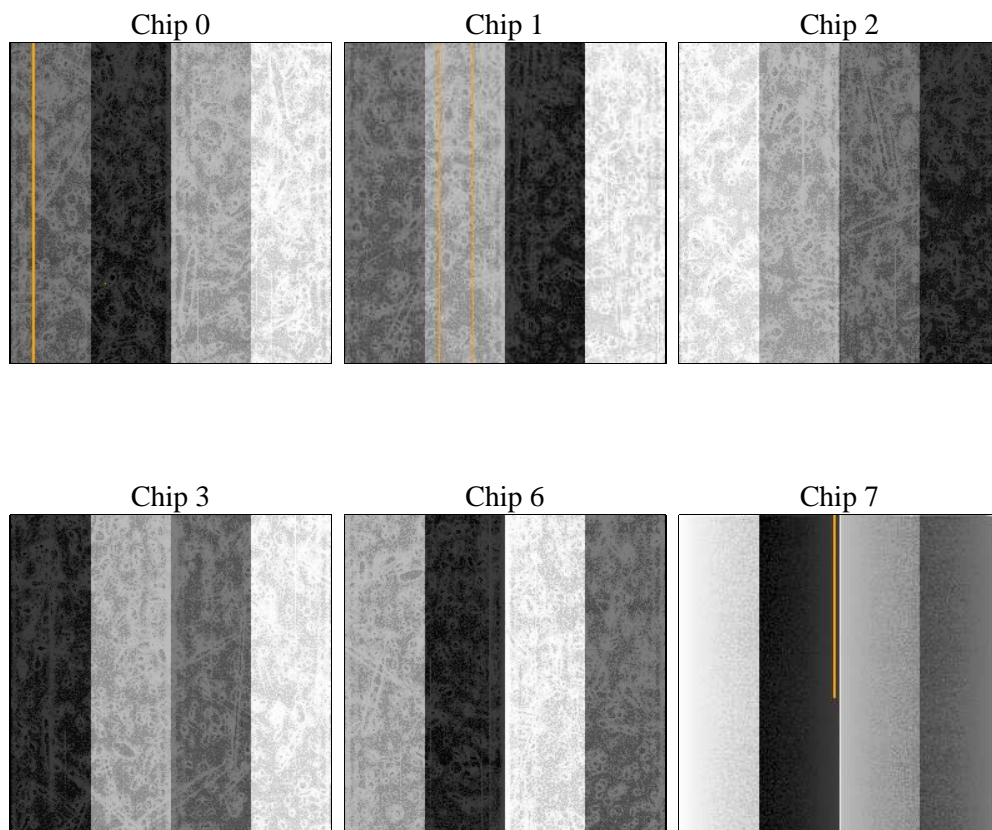
## 2 OBI

### 2.1 OBI

#### 2.1.1 Images



#### 2.1.2 Bias



### 2.1.3 Parameters

obi_num	2	Obi number	sched_exp_time	0.0	[s] Scheduled observation exposure time
ascdsver	8.5	Processing system revision	ontime	7801.5999709368	Sum of GTIs [s]
caldsver	4.5.4	&#160	ontime0	6446.8304416835	Sum of GTIs [s]
date	2012-12-11T23:59:30	Date and time of file creation	ontime1	6569.9465140104	Sum of GTIs [s]
revision	3	Processing version of data	ontime2	6281.4579176605	Sum of GTIs [s]
			ontime3	6313.9870703518	Sum of GTIs [s]
			ontime6	6884.2408490181	Sum of GTIs [s]
			ontime7	7801.5999709368	Sum of GTIs [s]
			l1events	1411891	Number of level 1 events

### 2.1.4 Events

	ccd 0	ccd 1	ccd 2	ccd 3	ccd 6	ccd 7		ccd 0	ccd 1	ccd 2	ccd 3	ccd 6	ccd 7
level 1 events	220248	224527	216170	220822	246275	283849	grade 0 events	95703	96822	95185	96470	105591	55594
rejected events	46260	46955	46553	48937	52069	49985		43%	43%	44%	43%	42%	19%
rejected %	21%	20%	21%	22%	21%	17%	grade 1 events	566	465	651	638	532	183
								0%	0%	0%	0%	0%	0%
							grade 2 events	30747	31848	28563	29173	33452	51069
								13%	14%	13%	13%	13%	17%
							grade 3 events	11189	11511	11115	11277	12023	23031
								5%	5%	5%	5%	4%	8%
							grade 4 events	11392	11352	11106	11372	12124	23229
								5%	5%	5%	5%	4%	8%
							grade 5 events	2944	3030	2674	3021	3375	8765
								1%	1%	1%	1%	1%	3%
							grade 6 events	25047	26113	23733	23691	31100	81055
								11%	11%	10%	10%	12%	28%
							grade 7 events	42660	43386	43143	45180	48078	40923
								19%	19%	19%	20%	19%	14%

## 2.2 Compared Parameters

Parameter	Planned	Actual	Parameter	Planned	Actual
Instrument	ACIS	ACIS	Obspar format version number	7	7
Detector	ACIS-012367	ACIS-012367	Obspar file type	PREDICTED	ACTUAL
Grating	NONE	NONE	Obspar update status	NONE	UPDATED
Data mode	FAINT	FAINT	On-chip summing requested	N	N
Observation mode	SECONDARY	SECONDARY	Subarray requested	NONE	NONE
[deg] Pointing RA	0	52.97799153646859	Alternating exposures requested	N	N
[deg] Pointing Dec	0	-27.93564292909119	[s] Primary exposure time	3.2	3.2
[deg] Pointing Roll	0.0	357.2227100013213			
[mm] SIM focus pos	-0.782348	-0.7809083437167272			
[mm] SIM defocus	0	0.7524282956875696			
[mm] SIM translation stage pos	-233.592463	250.4635187648994			
[mm] SIM translation stage offset	0	-0.007540371344731511			
[s] Observation start time (MET)	217257005.021987	217257003.99698			
Observation start date	2004-11-19T13:10:05	2004-11-19T13:10:03			
[s] Observation end time (MET)	217277051.972887	217277050.94788			
Observation end date	2004-11-19T18:44:12	2004-11-19T18:44:10			
Read mode	TIMED	TIMED			

## 2.3 Star Slots

## 2.4 FID Slots

## A Summary

### A.1 Status

V&V Scientist	Beth Sundheim
V&V Date (YYYY-MM-DD)	2013.01.04
V&V Edition	1
V&V Disposition and Status	OK
V&V Charge Time	7.8015999709368

### A.2 Comments