

# V&V Reference Report

## L2 ASCDS Version : 7.6.7.1

Observation 59883 - L2 Version 002  
Chandra X-Ray Center

L2 Processing Date : Apr 7 2006

## Contents

<b>1</b>	<b>Front</b>	<b>2</b>
<b>2</b>	<b>OBI</b>	<b>3</b>
2.1	OBI . . . . .	3
2.1.1	Images . . . . .	3
2.1.2	Bias . . . . .	3
2.1.3	Parameters . . . . .	4
2.1.4	Events . . . . .	4
2.2	Compared Parameters . . . . .	5
2.3	Aspect . . . . .	6
2.4	Star Slots . . . . .	8
2.5	FID Slots . . . . .	8
<b>A</b>	<b>Summary</b>	<b>9</b>
A.1	Status . . . . .	9
A.2	Comments . . . . .	9

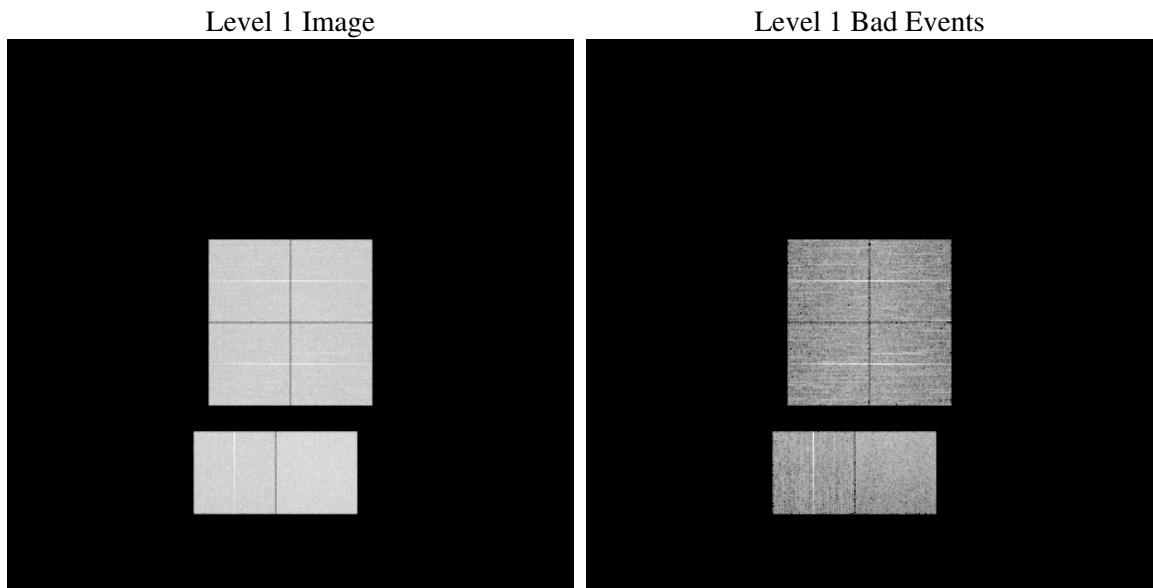
# 1 Front

seq_num	&#160
obs_id	59883
title	ACIS-012367 diagnostics
observer	CHANDRA engineering request/realtime commanding
object	&#160
dtcycle	0
cycle	P
ra_targ	0.0
dec_targ	0.0
ra_nom	89.045968650681
dec_nom	17.980996910081
roll_nom	295.52771429466
revision	2
ontime	7801.1297267377
livetime	7702.3471248614
ontime0	6530.7111531198
ontime1	6738.1743610501
ontime2	6443.2867265344
ontime3	6504.7016401291
ontime6	6961.88322106
ontime7	7801.1297267377
l2events	1057797

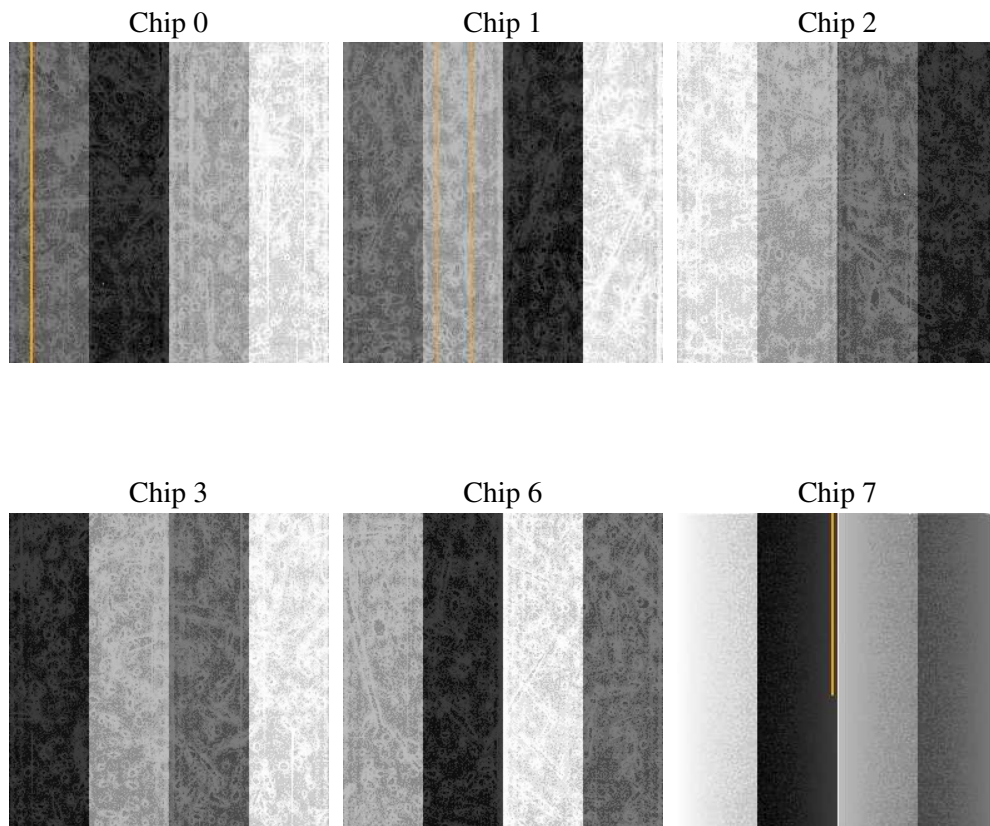
## 2 OBI

### 2.1 OBI

#### 2.1.1 Images



#### 2.1.2 Bias



### 2.1.3 Parameters

obi_num	0
ascdsver	7.6.7.1
caldsver	3.2.1
date	2006-04-07T21:15:52
revision	2

sched_exp_time	0.0
ontime	7804.3343116343
ontime0	6533.8746980131
ontime1	6741.2968659401
ontime2	6446.368191421
ontime3	6507.947265029
ontime6	6964.9236459732
ontime7	7804.3343116343
l1events	1410851

### 2.1.4 Events

	ccd 0	ccd 1	ccd 2	ccd 3	ccd 6	ccd 7
level 1 events	217942	224447	220799	221619	247009	279035
rejected events	45980	46329	49221	47990	53059	56964
rejected %	21%	20%	22%	21%	21%	20%

	ccd 0	ccd 1	ccd 2	ccd 3	ccd 6	ccd 7
grade 0 events	94242	96958	96020	97176	105275	38071
	43%	43%	43%	43%	42%	13%
grade 1 events	565	569	617	588	517	114
	0%	0%	0%	0%	0%	0%
grade 2 events	30384	31919	28915	29788	33584	66469
	13%	14%	13%	13%	13%	23%
grade 3 events	11216	11612	11305	11363	12057	16157
	5%	5%	5%	5%	4%	5%
grade 4 events	11248	11314	11226	11323	12195	15678
	5%	5%	5%	5%	4%	5%
grade 5 events	2834	2976	2705	3033	3434	6749
	1%	1%	1%	1%	1%	2%
grade 6 events	24952	26416	24181	24074	30905	85788
	11%	11%	10%	10%	12%	30%
grade 7 events	42501	42683	45830	44274	49042	50009
	19%	19%	20%	19%	19%	17%

## 2.2 Compared Parameters

Parameter	Planned	Actual	Parameter	Planned	Actual
Instrument	ACIS	ACIS	Obspar format version number	6	6
Detector	ACIS-012367	ACIS-012367	Obspar file type	PREDICTED	ACTUAL
Grating	NONE	NONE	Obspar update status	NONE	UPDATED
Data mode	FAINT	FAINT	On-chip summing requested	N	N
Observation mode	SECONDARY	SECONDARY	Subarray requested	NONE	NONE
Pointing RA	0	89.04596865068112	Alternating exposures requested	N	N
Pointing Dec	0	17.98099691008106	Primary exposure time	3.2	3.2
Pointing Roll	0.0	295.5277142946568			
SIM focus pos (mm)	-0.782348	-0.6828225247311905			
SIM defocus (mm)	0	0.8505141146731063			
SIM translation stage pos (mm)	-233.592463	250.466033080201			
SIM translation stage offset (mm)	0	-0.01005468664627074			
Observation start time	220917212.536657	220917211.51166			
Observation start date	2004-12-31T21:53:33	2004-12-31T21:53:31			
Observation end time	220932243.137334	220932242.11234			
Observation end date	2005-01-01T02:04:03	2005-01-01T02:04:02			
Read mode	TIMED	TIMED			

## 2.3 Aspect



## **2.4 Star Slots**

## **2.5 FID Slots**



## A Summary

### A.1 Status

V&V Scientist	Jen Lauer
V&V Date (YYYY-MM-DD)	2006.04.10
V&V Edition	1
V&V Disposition and Status	OK
V&V Charge Time	7.80112972

### A.2 Comments