

V&V Reference Report

L2 ASCDS Version : 7.6.7

Observation 59823 - L2 Version 002
Chandra X-Ray Center

L2 Processing Date: Feb 19 2006

Contents

1	Front	2
2	OBI	3
2.1	OBI	3
2.1.1	Images	3
2.1.2	Bias	3
2.1.3	Parameters	4
2.1.4	Events	4
2.2	Compared Parameters	5
2.3	Aspect	6
2.4	Star Slots	8
2.5	FID Slots	8
A	Summary	9
A.1	Status	9
A.2	Comments	9

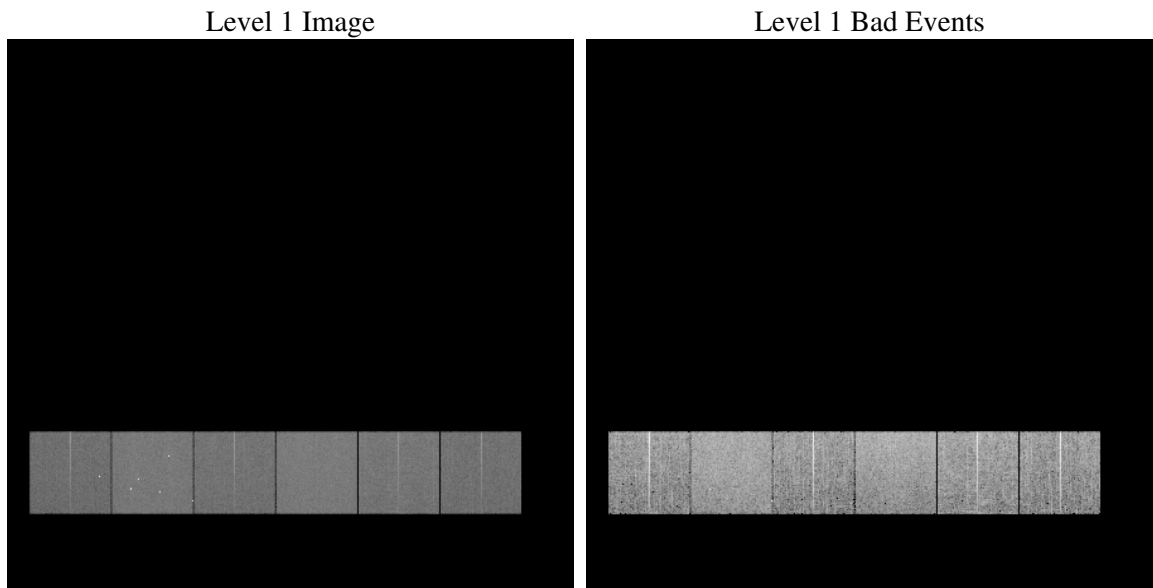
1 Front

seq_num	
obs_id	59823
title	ACIS-456789 diagnostics
observer	CHANDRA engineering request/realtime commanding
object	
dtcycle	0
cycle	P
ra_targ	0.0
dec_targ	0.0
ra_nom	140.01210156103
dec_nom	6.5259626916673
roll_nom	32.253983341848
revision	2
ontime	7784.5932970643
livetime	7686.0200894175
ontime4	5973.0057866275
ontime5	7784.6343370676
ontime6	6465.5949880183
ontime7	7784.5932970643
ontime8	6744.4014333487
ontime9	6267.7716806531
l2events	1020488

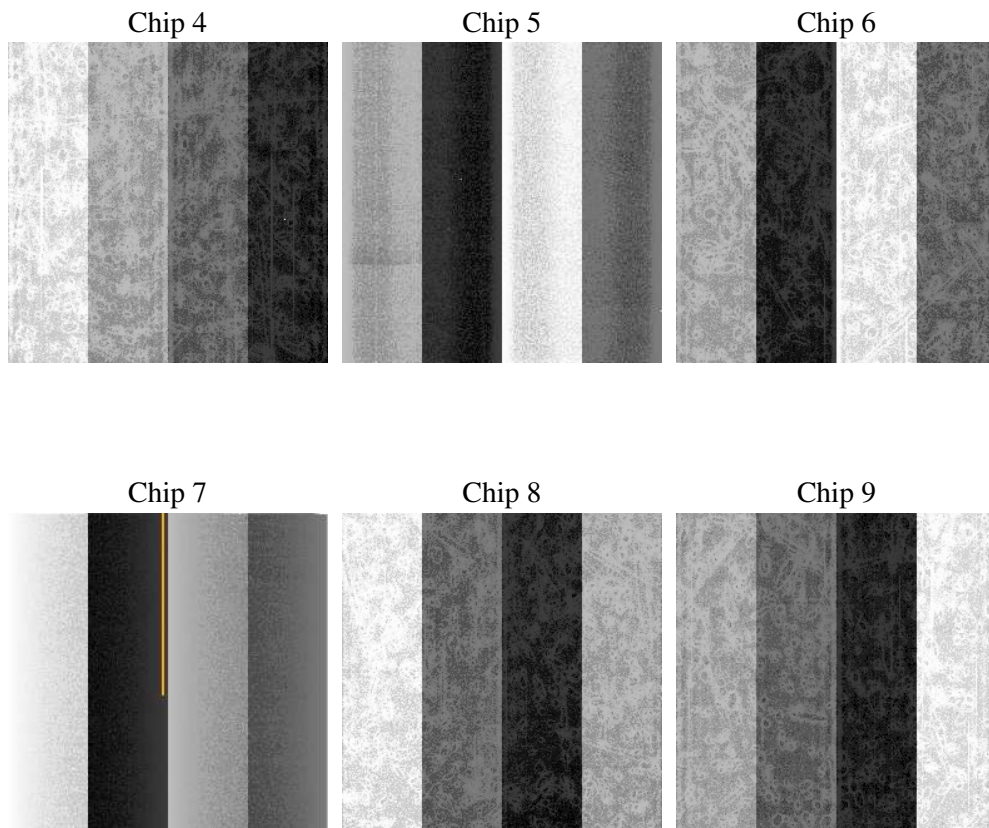
2 OBI

2.1 OBI

2.1.1 Images



2.1.2 Bias



2.1.3 Parameters

obi_num	1
ascdsver	7.6.7
caldsver	3.2.1
date	2006-02-20T00:04:23
revision	2

sched_exp_time	0.0
ontime	7784.9090019763
ontime4	5973.1983715296
ontime5	7784.9090019763
ontime6	6465.8286129236
ontime7	7784.9090019763
ontime8	6744.5529782772
ontime9	6268.1284255683
l1events	1406095

2.1.4 Events

	ccd 4	ccd 5	ccd 6	ccd 7	ccd 8	ccd 9
level 1 events	197205	263997	221592	271729	241974	209598
rejected events	47044	60136	47720	57176	54532	47464
rejected %	23%	22%	21%	21%	22%	22%

	ccd 4	ccd 5	ccd 6	ccd 7	ccd 8	ccd 9
grade 0 events	88052	25946	94606	36113	101917	89270
	44%	9%	42%	13%	42%	42%
grade 1 events	684	314	466	88	538	545
	0%	0%	0%	0%	0%	0%
grade 2 events	23354	94263	30192	65327	32976	27778
	11%	35%	13%	24%	13%	13%
grade 3 events	10091	6248	10665	15093	12311	10447
	5%	2%	4%	5%	5%	4%
grade 4 events	9942	6248	10929	14909	12247	10251
	5%	2%	4%	5%	5%	4%
grade 5 events	2764	5908	3085	6583	3872	3146
	1%	2%	1%	2%	1%	1%
grade 6 events	18722	71156	27480	83111	27991	24388
	9%	26%	12%	30%	11%	11%
grade 7 events	43596	53914	44169	50505	50122	43773
	22%	20%	19%	18%	20%	20%

2.2 Compared Parameters

Parameter	Planned	Actual	Parameter	Planned	Actual
Instrument	ACIS	ACIS	Obspar format version number	6	6
Detector	ACIS-456789	ACIS-456789	Obspar file type	PREDICTED	ACTUAL
Grating	NONE	NONE	Obspar update status	NONE	UPDATED
Data mode	FAINT	FAINT	On-chip summing requested	N	N
Observation mode	SECONDARY	SECONDARY	Subarray requested	NONE	NONE
Pointing RA	0	140.0121015610334	Alternating exposures requested	N	N
Pointing Dec	0	6.525962691667334	Primary exposure time	3.2	3.2
Pointing Roll	0.0	32.25398334184752			
SIM focus pos (mm)	-0.684267	-0.6828225247311905			
SIM defocus (mm)	0	0.8505141146731063			
SIM translation stage pos (mm)	-190.132523	250.4635187648994			
SIM translation stage offset (mm)	0	-0.007540371344731511			
Observation start time	223430207.200001	223430206.17502			
Observation start date	2005-01-29T23:56:47	2005-01-29T23:56:46			
Observation end time	223446596.950742	223446595.92576			
Observation end date	2005-01-30T04:29:57	2005-01-30T04:29:55			
Read mode	TIMED	TIMED			

2.3 Aspect

2.4 Star Slots

2.5 FID Slots

A Summary

A.1 Status

V&V Scientist	Beth Sundheim
V&V Date (YYYY-MM-DD)	2006.02.21
V&V Edition	1
V&V Disposition and Status	OK
V&V Charge Time	7.78459329

A.2 Comments