

# V&V Reference Report

## L2 ASCDS Version : 7.6.7

Observation 59743 - L2 Version 002  
Chandra X-Ray Center

L2 Processing Date: Feb 27 2006

## Contents

<b>1</b>	<b>Front</b>	<b>2</b>
<b>2</b>	<b>OBI</b>	<b>3</b>
2.1	OBI . . . . .	3
2.1.1	Images . . . . .	3
2.1.2	Bias . . . . .	3
2.1.3	Parameters . . . . .	4
2.1.4	Events . . . . .	4
2.2	Compared Parameters . . . . .	5
2.3	Aspect . . . . .	6
2.4	Star Slots . . . . .	8
2.5	FID Slots . . . . .	8
<b>A</b>	<b>Summary</b>	<b>9</b>
A.1	Status . . . . .	9
A.2	Comments . . . . .	9

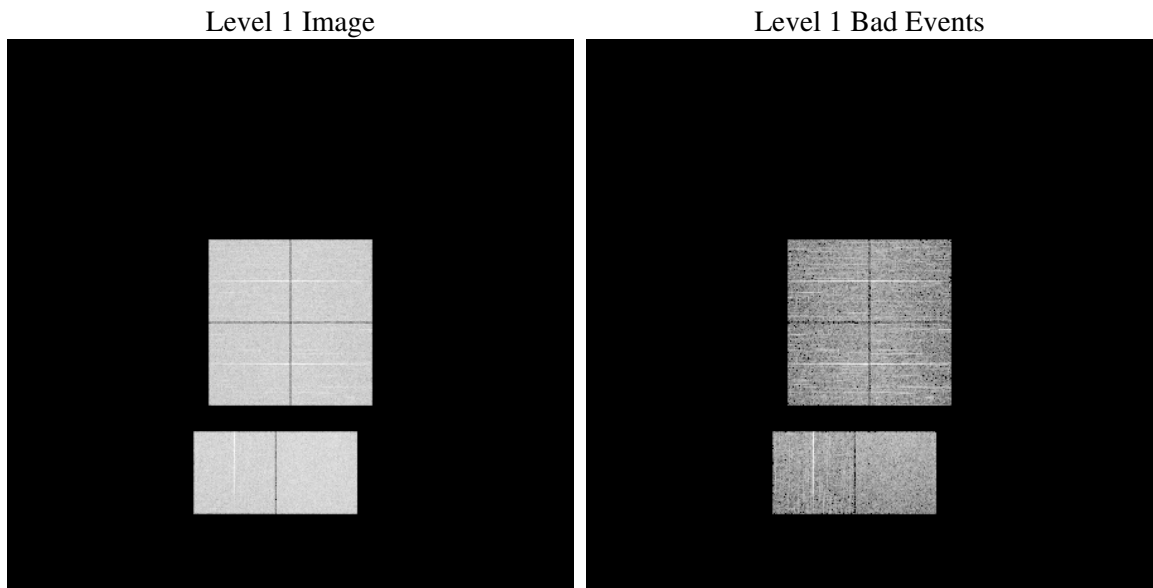
# 1 Front

seq_num	&#160
obs_id	59743
title	ACIS-012367 diagnostics
observer	CHANDRA engineering request/realtime commanding
object	&#160
dtcycle	0
cycle	P
ra_targ	0.0
dec_targ	0.0
ra_nom	334.95843829236
dec_nom	-47.003703780549
roll_nom	154.54231514653
revision	2
ontime	5299.1999802589
livetime	5232.0983193138
ontime0	4765.5205258727
ontime1	4800.0915059447
ontime2	4589.4291960597
ontime3	4673.6942432821
ontime6	4975.1038101017
ontime7	5299.1999802589
l2events	719273

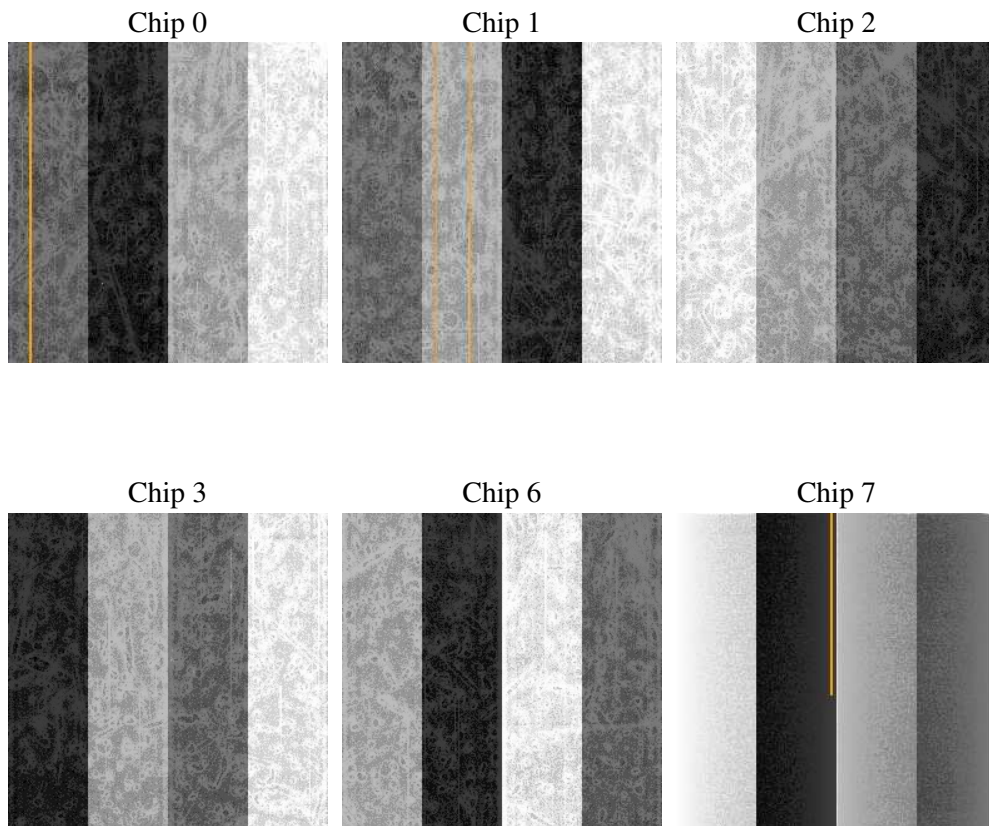
## 2 OBI

### 2.1 OBI

#### 2.1.1 Images



#### 2.1.2 Bias



### 2.1.3 Parameters

obi_num	1
ascdsver	7.6.7
caldbver	3.2.1
date	2006-02-27T17:26:54
revision	2

sched_exp_time	0.0
ontime	5302.2768802345
ontime0	4767.5182410479
ontime1	4803.1684059203
ontime2	4592.5060960352
ontime3	4676.7711432576
ontime6	4978.1807100773
ontime7	5302.2768802345
l1events	964478

### 2.1.4 Events

	ccd 0	ccd 1	ccd 2	ccd 3	ccd 6	ccd 7
level 1 events	153642	153583	150849	155673	168174	182557
rejected events	32983	32270	33094	35616	36134	37949
rejected %	21%	21%	21%	22%	21%	20%

	ccd 0	ccd 1	ccd 2	ccd 3	ccd 6	ccd 7
grade 0 events	66342	66170	65740	67155	71419	24942
	43%	43%	43%	43%	42%	13%
grade 1 events	392	349	430	373	380	76
	0%	0%	0%	0%	0%	0%
grade 2 events	20954	21622	19967	20403	22839	43316
	13%	14%	13%	13%	13%	23%
grade 3 events	7841	7728	7681	7947	8324	10282
	5%	5%	5%	5%	4%	5%
grade 4 events	7676	7897	7770	7934	8375	10394
	4%	5%	5%	5%	4%	5%
grade 5 events	2068	2050	1869	2190	2392	4553
	1%	1%	1%	1%	1%	2%
grade 6 events	17940	17964	16686	16697	21176	55770
	11%	11%	11%	10%	12%	30%
grade 7 events	30429	29803	30706	32974	33269	33224
	19%	19%	20%	21%	19%	18%

## 2.2 Compared Parameters

Parameter	Planned	Actual	Parameter	Planned	Actual
Instrument	ACIS	ACIS	Obspar format version number	6	6
Detector	ACIS-012367	ACIS-012367	Obspar file type	PREDICTED	ACTUAL
Grating	NONE	NONE	Obspar update status	NONE	UPDATED
Data mode	FAINT	FAINT	On-chip summing requested	N	N
Observation mode	SECONDARY	SECONDARY	Subarray requested	NONE	NONE
Pointing RA	0	334.9584382923614	Alternating exposures requested	N	N
Pointing Dec	0	-47.00370378054889	Primary exposure time	3.2	3.2
Pointing Roll	0.0	154.5423151465253			
SIM focus pos (mm)	-0.782348	-0.6828225247311905			
SIM defocus (mm)	0	0.8505141146731063			
SIM translation stage pos (mm)	-233.592463	250.466033080201			
SIM translation stage offset (mm)	0	-0.01005468664627074			
Observation start time	227082602.165346	227082601.14035			
Observation start date	2005-03-13T06:30:02	2005-03-13T06:30:01			
Observation end time	227096169.065961	227096168.04097			
Observation end date	2005-03-13T10:16:09	2005-03-13T10:16:08			
Read mode	TIMED	TIMED			

## 2.3 Aspect



## **2.4 Star Slots**

## **2.5 FID Slots**

## A Summary

### A.1 Status

V&V Scientist	Jen Lauer
V&V Date (YYYY-MM-DD)	2006.02.27
V&V Edition	1
V&V Disposition and Status	OK
V&V Charge Time	5.29919998

### A.2 Comments