

V&V Reference Report

L2 ASCDS Version : 7.6.7.1

Observation 59723 - L2 Version 002
Chandra X-Ray Center

L2 Processing Date : Mar 18 2006

Contents

1	Front	2
2	OBI	3
2.1	OBI	3
2.1.1	Images	3
2.1.2	Bias	3
2.1.3	Parameters	4
2.1.4	Events	4
2.2	Compared Parameters	5
2.3	Aspect	6
2.4	Star Slots	8
2.5	FID Slots	8
A	Summary	9
A.1	Status	9
A.2	Comments	9

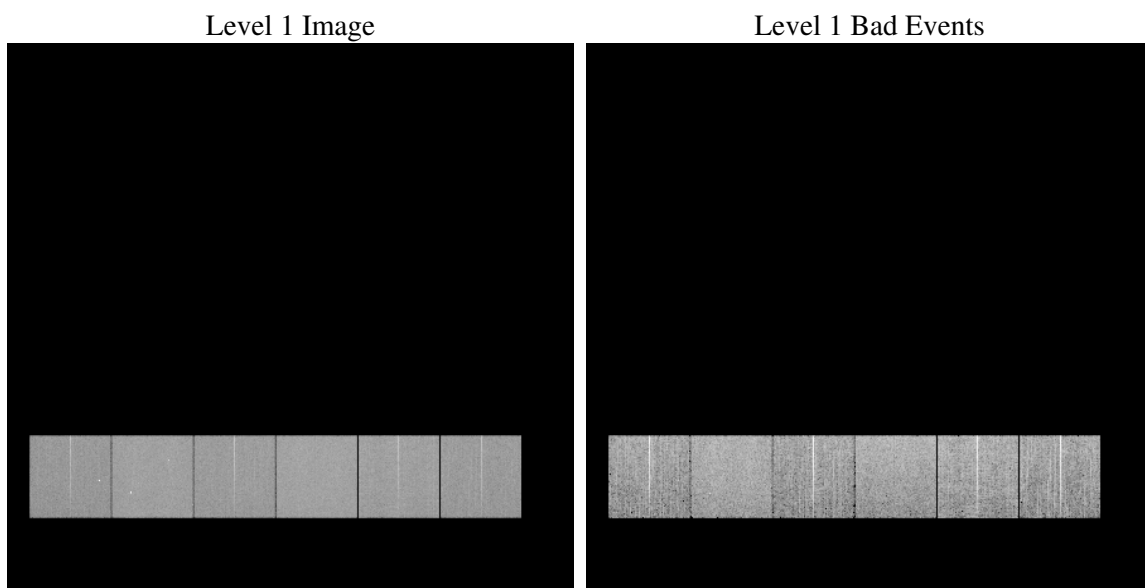
1 Front

seq_num	
obs_id	59723
title	ACIS-456789 diagnostics
observer	CHANDRA engineering request/realtime commanding
object	
dtcycle	0
cycle	P
ra_targ	0.0
dec_targ	0.0
ra_nom	188.9726189801
dec_nom	12.989699036812
roll_nom	168.19884829176
revision	2
ontime	8275.0511891246
livetime	8170.2675083303
ontime4	6706.542016387
ontime5	8275.0922291279
ontime6	7208.8520920277
ontime7	8275.0511891246
ontime8	7448.7507956624
ontime9	7056.4031185806
l2events	1075293

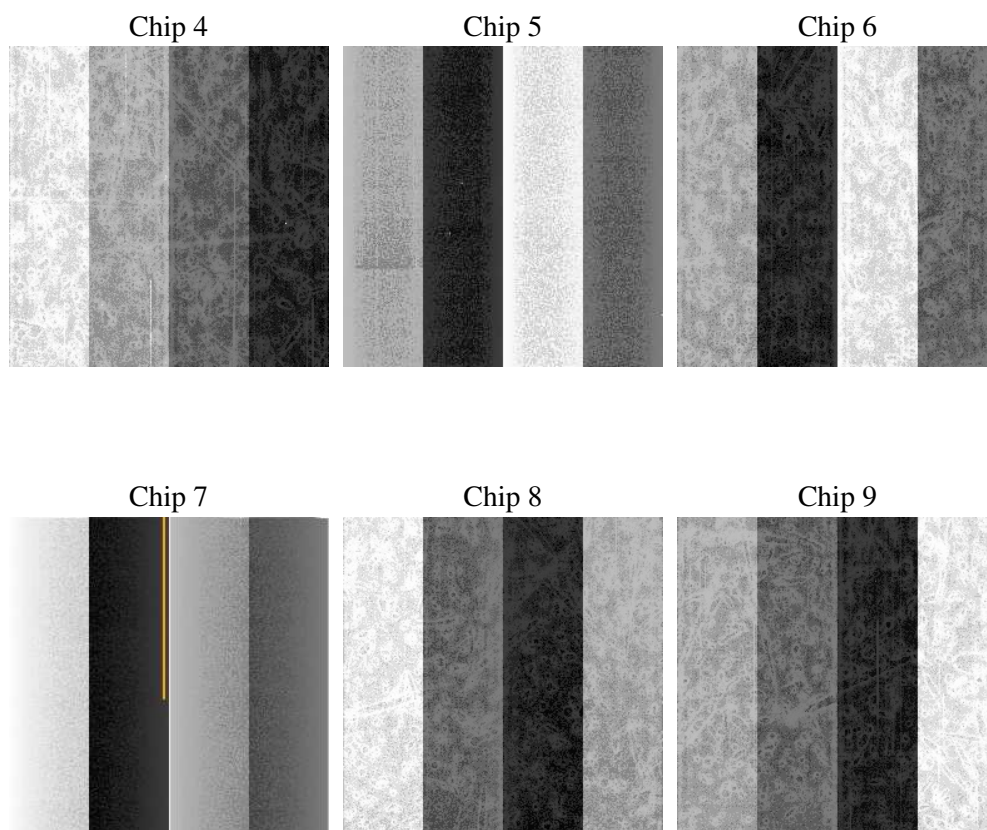
2 OBI

2.1 OBI

2.1.1 Images



2.1.2 Bias



2.1.3 Parameters

obi_num	0
ascdsver	7.6.7.1
caldsver	3.2.1
date	2006-03-18T06:29:28
revision	2

sched_exp_time	0.0
ontime	8277.5315555334
ontime4	6708.8992627859
ontime5	8277.5315555334
ontime6	7211.2503784299
ontime7	8277.5315555334
ontime8	7451.0823820233
ontime9	7058.9245249927
l1events	1491218

2.1.4 Events

	ccd 4	ccd 5	ccd 6	ccd 7	ccd 8	ccd 9
level 1 events	214903	264197	239389	279936	261810	230983
rejected events	53502	63813	53476	60309	62142	55027
rejected %	24%	24%	22%	21%	23%	23%

	ccd 4	ccd 5	ccd 6	ccd 7	ccd 8	ccd 9
grade 0 events	93759	21086	100850	36466	108147	96925
	43%	7%	42%	13%	41%	41%
grade 1 events	745	111	555	109	612	574
	0%	0%	0%	0%	0%	0%
grade 2 events	25507	93585	32342	67173	35148	30041
	11%	35%	13%	23%	13%	13%
grade 3 events	10746	6044	11545	15384	12881	11229
	5%	2%	4%	5%	4%	4%
grade 4 events	10731	5842	11523	15031	13049	11319
	4%	2%	4%	5%	4%	4%
grade 5 events	3169	6208	3455	7034	4466	3753
	1%	2%	1%	2%	1%	1%
grade 6 events	20736	73911	29736	85661	30515	26521
	9%	27%	12%	30%	11%	11%
grade 7 events	49510	57410	49383	53078	56992	50621
	23%	21%	20%	18%	21%	21%

2.2 Compared Parameters

Parameter	Planned	Actual	Parameter	Planned	Actual
Instrument	ACIS	ACIS	Obspar format version number	6	6
Detector	ACIS-456789	ACIS-456789	Obspar file type	PREDICTED	ACTUAL
Grating	NONE	NONE	Obspar update status	NONE	UPDATED
Data mode	FAINT	FAINT	On-chip summing requested	N	N
Observation mode	SECONDARY	SECONDARY	Subarray requested	NONE	NONE
Pointing RA	0	188.9726189801036	Alternating exposures requested	N	N
Pointing Dec	0	12.98969903681247	Primary exposure time	3.2	3.2
Pointing Roll	0.0	168.1988482917564			
SIM focus pos (mm)	-0.684267	-0.6828225247311905			
SIM defocus (mm)	0	0.8505141146731063			
SIM translation stage pos (mm)	-190.132523	250.466033080201			
SIM translation stage offset (mm)	0	-0.01005468664627074			
Observation start time	228262047.168873	228262046.14386			
Observation start date	2005-03-26T22:07:27	2005-03-26T22:07:26			
Observation end time	228285628.319945	228285627.29493			
Observation end date	2005-03-27T04:40:28	2005-03-27T04:40:27			
Read mode	TIMED	TIMED			

2.3 Aspect

2.4 Star Slots

2.5 FID Slots

A Summary

A.1 Status

V&V Scientist	Jen Lauer
V&V Date (YYYY-MM-DD)	2006.03.20
V&V Edition	1
V&V Disposition and Status	OK
V&V Charge Time	8.27505118

A.2 Comments