

V&V Reference Report

L2 ASCDS Version : 8.5.1.1

Observation 59613 - L2 Version 3
Chandra X-Ray Center

L2 Processing Date : Dec 25 2012

Contents

1	Front	2
2	OBI	3
2.1	OBI	3
2.1.1	Images	3
2.1.2	Bias	3
2.1.3	Parameters	4
2.1.4	Events	4
2.2	Compared Parameters	5
2.3	Star Slots	6
2.4	FID Slots	6
A	Summary	7
A.1	Status	7
A.2	Comments	7

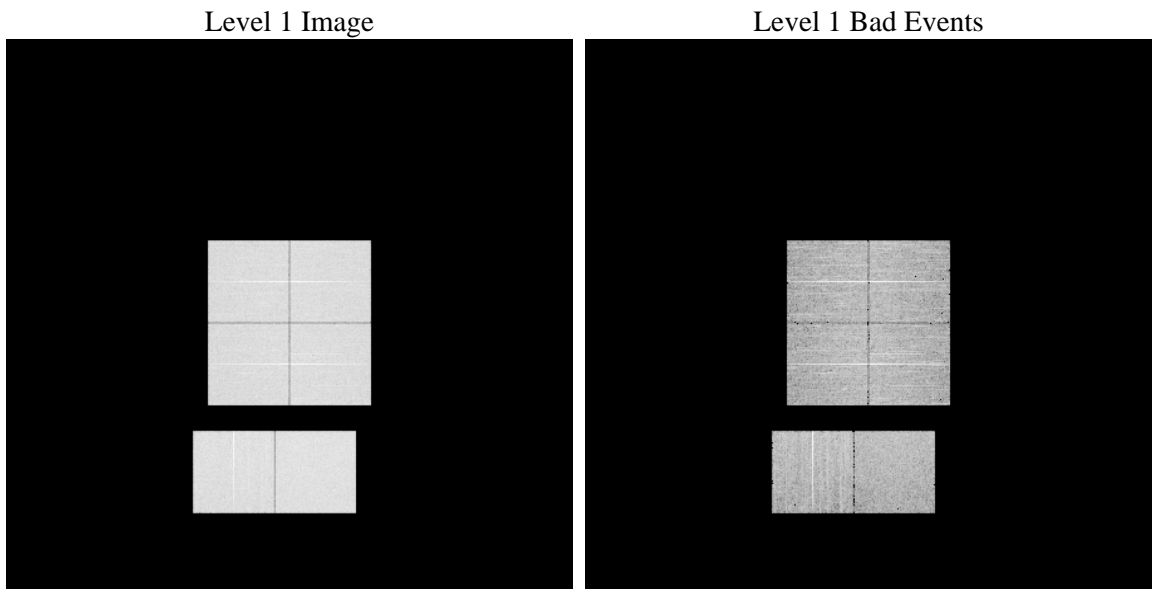
1 Front

seq_num	 	Sequence number
obs_id	59613	Observation id
title	ACIS-012367 diagnostics	Proposal title
observer	CHANDRA engineering request/realtime commanding	Principal investig
object	 	Source name
dtcycle	0	
cycle	P	events from which exps? Prim/Second/Both
ra_targ	0.0	Observer's specified target RA [deg]
dec_targ	0.0	Observer's specified target Dec [deg]
ra_nom	254.98320080157	Nominal RA [deg]
dec_nom	0.97682264230889	Nominal Dec [deg]
roll_nom	201.14908320081	Nominal Roll [deg]
revision	3	Processing version of data
ontime	7612.7999716401	Sum of GTIs [s]
livetime	7516.4021145214	Livetime [s]
ontime0	7026.1820284128	Sum of GTIs [s]
ontime1	7155.8215292394	Sum of GTIs [s]
ontime2	6886.8197065294	Sum of GTIs [s]
ontime3	7042.3871389627	Sum of GTIs [s]
ontime6	7411.8590233624	Sum of GTIs [s]
ontime7	7612.7999716401	Sum of GTIs [s]
l2events	1019110	Number of level 2 events

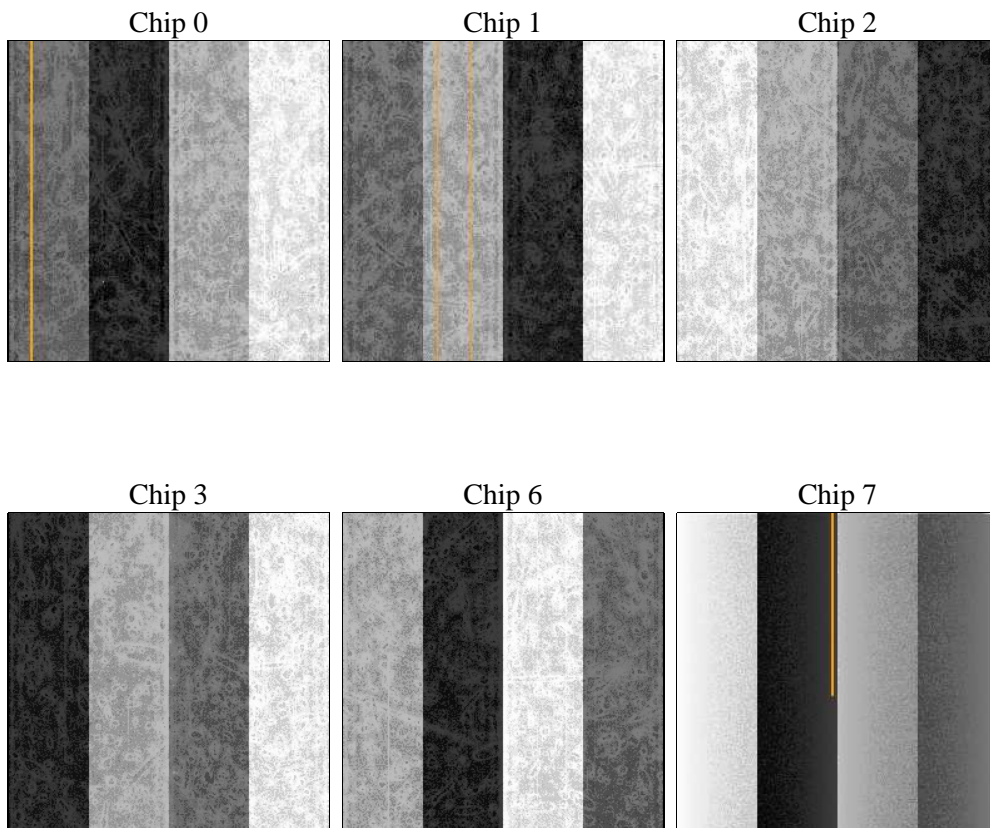
2 OBI

2.1 OBI

2.1.1 Images



2.1.2 Bias



2.1.3 Parameters

obi_num	0	Obi number	sched_exp_time	0.0	[s] Scheduled observation exposure time
ascdsver	8.5.1.1	Processing system revision	ontime	7612.7999716401	Sum of GTIs [s]
caldsver	4.5.5	 	ontime0	7026.1820284128	Sum of GTIs [s]
date	2012-12-25T04:23:13	Date and time of file creation	ontime1	7155.8215292394	Sum of GTIs [s]
revision	3	Processing version of data	ontime2	6886.8197065294	Sum of GTIs [s]
			ontime3	7042.3871389627	Sum of GTIs [s]
			ontime6	7411.8590233624	Sum of GTIs [s]
			ontime7	7612.7999716401	Sum of GTIs [s]
			l1events	1371687	Number of level 1 events

2.1.4 Events

	ccd 0	ccd 1	ccd 2	ccd 3	ccd 6	ccd 7		ccd 0	ccd 1	ccd 2	ccd 3	ccd 6	ccd 7
level 1 events	216874	221151	216624	222659	242180	252199	grade 0 events	92672	93273	92783	95765	100905	49398
rejected events	48008	49394	50288	51267	55083	46191		42%	42%	42%	43%	41%	19%
rejected %	22%	22%	23%	23%	22%	18%	grade 1 events	541	469	623	658	543	155
								0%	0%	0%	0%	0%	0%
							grade 2 events	29474	30764	28146	28999	32434	45100
								13%	13%	12%	13%	13%	17%
							grade 3 events	11039	11123	10806	11169	11661	20348
								5%	5%	4%	5%	4%	8%
							grade 4 events	11016	11052	11037	11352	11754	20424
								5%	4%	5%	5%	4%	8%
							grade 5 events	3014	3090	2910	3309	3423	8133
								1%	1%	1%	1%	1%	3%
							grade 6 events	24746	25619	23636	24185	30411	70837
								11%	11%	10%	10%	12%	28%
							grade 7 events	44372	45761	46683	47222	51049	37804
								20%	20%	21%	21%	21%	14%

2.2 Compared Parameters

Parameter	Planned	Actual	Parameter	Planned	Actual
Instrument	ACIS	ACIS	Obspar format version number	7	7
Detector	ACIS-012367	ACIS-012367	Obspar file type	PREDICTED	ACTUAL
Grating	NONE	NONE	Obspar update status	NONE	UPDATED
Data mode	FAINT	FAINT	On-chip summing requested	N	N
Observation mode	SECONDARY	SECONDARY	Subarray requested	NONE	NONE
[deg] Pointing RA	0	254.9832008015659	Alternating exposures requested	N	N
[deg] Pointing Dec	0	0.9768226423088928	[s] Primary exposure time	3.2	3.2
[deg] Pointing Roll	0.0	201.1490832008129			
[mm] SIM focus pos	-0.782348	-0.6828225247311905			
[mm] SIM defocus	0	0.8505141146731063			
[mm] SIM translation stage pos	-233.592463	250.466033080201			
[mm] SIM translation stage offset	0	-0.01005468664627074			
[s] Observation start time (MET)	235310402.589738	235310401.56473			
Observation start date	2005-06-16T12:00:03	2005-06-16T12:00:01			
[s] Observation end time (MET)	235325101.090409	235325100.0654			
Observation end date	2005-06-16T16:05:01	2005-06-16T16:05:00			
Read mode	TIMED	TIMED			

2.3 Star Slots

2.4 FID Slots

A Summary

A.1 Status

V&V Scientist	Jen Lauer
V&V Date (YYYY-MM-DD)	2013.01.16
V&V Edition	1
V&V Disposition and Status	OK
V&V Charge Time	7.6127999716401

A.2 Comments