

# V&V Reference Report

## L2 ASCDS Version : 7.6.7.1

Observation 59613 - L2 Version 002  
Chandra X-Ray Center

L2 Processing Date : Mar 10 2006

## Contents

<b>1</b>	<b>Front</b>	<b>2</b>
<b>2</b>	<b>OBI</b>	<b>3</b>
2.1	OBI . . . . .	3
2.1.1	Images . . . . .	3
2.1.2	Bias . . . . .	3
2.1.3	Parameters . . . . .	4
2.1.4	Events . . . . .	4
2.2	Compared Parameters . . . . .	5
2.3	Aspect . . . . .	6
2.4	Star Slots . . . . .	8
2.5	FID Slots . . . . .	8
<b>A</b>	<b>Summary</b>	<b>9</b>
A.1	Status . . . . .	9
A.2	Comments . . . . .	9

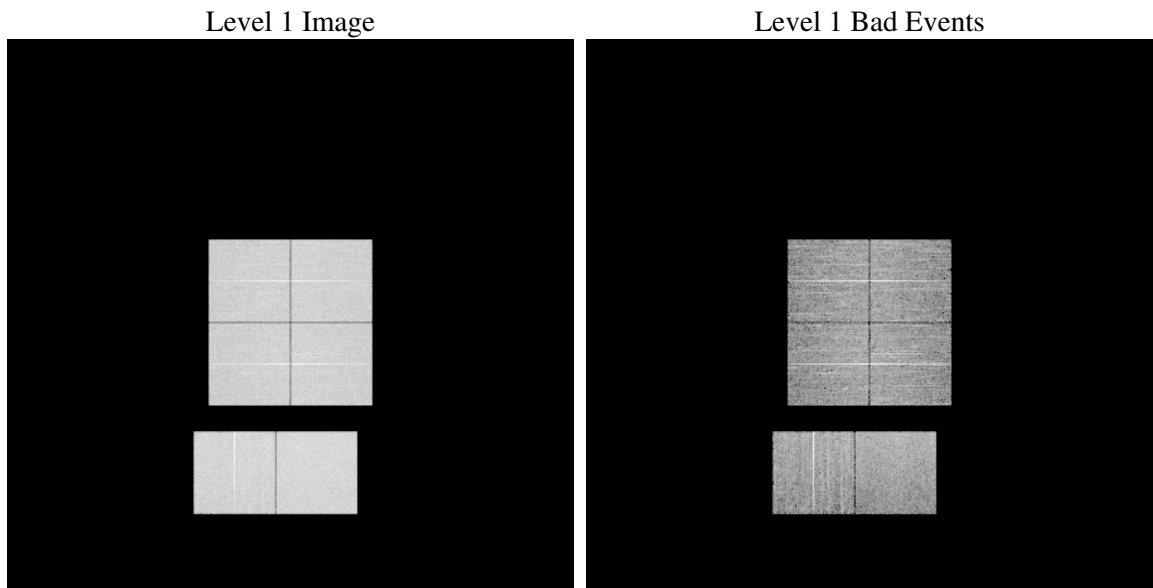
# 1 Front

seq_num	&#160
obs_id	59613
title	ACIS-012367 diagnostics
observer	CHANDRA engineering request/realtime commanding
object	&#160
dtcycle	0
cycle	P
ra_targ	0.0
dec_targ	0.0
ra_nom	254.98322664703
dec_nom	0.97683261961713
roll_nom	201.14908279052
revision	2
ontime	7612.7999716401
livetime	7516.4021145214
ontime0	7026.1820284128
ontime1	7155.8215292394
ontime2	6886.8197065294
ontime3	7042.3871389627
ontime6	7411.8590233624
ontime7	7612.7999716401
l2events	1011092

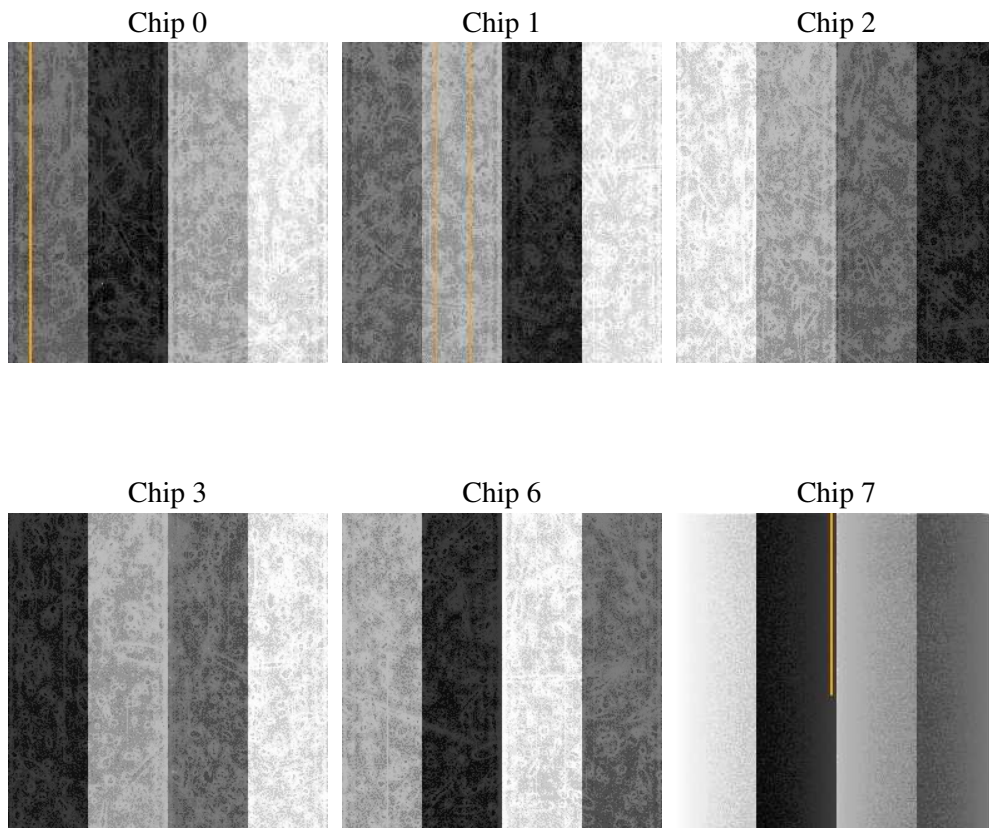
## 2 OBI

### 2.1 OBI

#### 2.1.1 Images



#### 2.1.2 Bias



### 2.1.3 Parameters

obi_num	0
ascdsver	7.6.7.1
caldsver	3.2.1
date	2006-03-10T20:43:14
revision	2

sched_exp_time	0.0
ontime	7616.3746574521
ontime0	7029.7567142248
ontime1	7159.3962150514
ontime2	6890.3943923414
ontime3	7045.9618247747
ontime6	7415.4337091744
ontime7	7616.3746574521
l1events	1371687

### 2.1.4 Events

	ccd 0	ccd 1	ccd 2	ccd 3	ccd 6	ccd 7
level 1 events	216874	221151	216624	222659	242180	252199
rejected events	48001	49402	50285	51271	55099	54347
rejected %	22%	22%	23%	23%	22%	21%

	ccd 0	ccd 1	ccd 2	ccd 3	ccd 6	ccd 7
grade 0 events	92668	93271	92781	95763	100901	33807
	42%	42%	42%	43%	41%	13%
grade 1 events	541	469	623	658	543	94
	0%	0%	0%	0%	0%	0%
grade 2 events	29478	30766	28148	29001	32438	59585
	13%	13%	12%	13%	13%	23%
grade 3 events	11039	11123	10805	11169	11661	13882
	5%	5%	4%	5%	4%	5%
grade 4 events	11015	11051	11035	11352	11754	13837
	5%	4%	5%	5%	4%	5%
grade 5 events	3014	3090	2909	3308	3421	6275
	1%	1%	1%	1%	1%	2%
grade 6 events	24747	25620	23639	24186	30411	76824
	11%	11%	10%	10%	12%	30%
grade 7 events	44372	45761	46684	47222	51051	47895
	20%	20%	21%	21%	21%	18%

## 2.2 Compared Parameters

Parameter	Planned	Actual	Parameter	Planned	Actual
Instrument	ACIS	ACIS	Obspar format version number	6	6
Detector	ACIS-012367	ACIS-012367	Obspar file type	PREDICTED	ACTUAL
Grating	NONE	NONE	Obspar update status	NONE	UPDATED
Data mode	FAINT	FAINT	On-chip summing requested	N	N
Observation mode	SECONDARY	SECONDARY	Subarray requested	NONE	NONE
Pointing RA	0	254.9832266470323	Alternating exposures requested	N	N
Pointing Dec	0	0.9768326196171346	Primary exposure time	3.2	3.2
Pointing Roll	0.0	201.149082790523			
SIM focus pos (mm)	-0.782348	-0.6828225247311905			
SIM defocus (mm)	0	0.8505141146731063			
SIM translation stage pos (mm)	-233.592463	250.466033080201			
SIM translation stage offset (mm)	0	-0.01005468664627074			
Observation start time	235310402.589738	235310401.56473			
Observation start date	2005-06-16T12:00:03	2005-06-16T12:00:01			
Observation end time	235325101.090409	235325100.0654			
Observation end date	2005-06-16T16:05:01	2005-06-16T16:05:00			
Read mode	TIMED	TIMED			

## 2.3 Aspect



## **2.4 Star Slots**

## **2.5 FID Slots**



## A Summary

### A.1 Status

V&V Scientist	Jen Lauer
V&V Date (YYYY-MM-DD)	2006.03.13
V&V Edition	1
V&V Disposition and Status	OK
V&V Charge Time	7.61279997

### A.2 Comments