

# V&V Reference Report

## L2 ASCDS Version : 8.5.1.1

Observation 5953 - L2 Version 3  
Chandra X-Ray Center

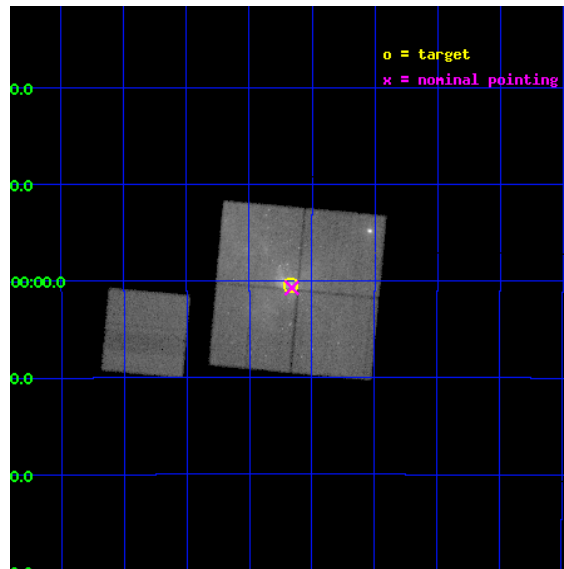
L2 Processing Date : Dec 26 2012

## Contents

<b>1</b>	<b>Front</b>	<b>2</b>
<b>2</b>	<b>OBI</b>	<b>3</b>
2.1	OBI . . . . .	3
2.1.1	Images . . . . .	3
2.1.2	Bias . . . . .	3
2.1.3	Parameters . . . . .	4
2.1.4	Events . . . . .	4
2.2	Compared Parameters . . . . .	5
2.3	Aspect . . . . .	6
2.4	Star Slots . . . . .	9
2.4.1	Slot 3 . . . . .	9
2.4.2	Slot 4 . . . . .	10
2.4.3	Slot 5 . . . . .	11
2.4.4	Slot 6 . . . . .	12
2.4.5	Slot 7 . . . . .	13
2.5	FID Slots . . . . .	14
2.5.1	Slot 0 . . . . .	14
2.5.2	Slot 1 . . . . .	15
2.5.3	Slot 2 . . . . .	16
<b>A</b>	<b>Summary</b>	<b>17</b>
A.1	Status . . . . .	17
A.2	Comments . . . . .	17

# 1 Front

seq_num	600472	Sequence number
obs_id	5953	Observation id
title	Simultaneous Gamma-Ray to Sub-Millimeter Monitoring of Sagittarius A*	Proposal title
observer	Dr. Frederick Baganoff	Principal investigator
object	Sgr A*	Source name
dtcycle	0	&#160
cycle	P	events from which exps? Prim/Second/Both
ra_targ	266.416667	Observer's specified target RA [deg]
dec_targ	-29.007778	Observer's specified target Dec [deg]
ra_nom	266.41505964669	Nominal RA [deg]
dec_nom	-29.012210751993	Nominal Dec [deg]
roll_nom	275.28288784734	Nominal Roll [deg]
revision	3	Processing version of data
ontime	45960.5999116	Sum of GTIs [s]
livetime	45360.090838054	Livetime [s]
ontime0	45938.612940043	Sum of GTIs [s]
ontime1	45960.5999116	Sum of GTIs [s]
ontime2	45960.5999116	Sum of GTIs [s]
ontime3	45960.5999116	Sum of GTIs [s]
ontime6	45960.5999116	Sum of GTIs [s]
l2events	442582	Number of level 2 events

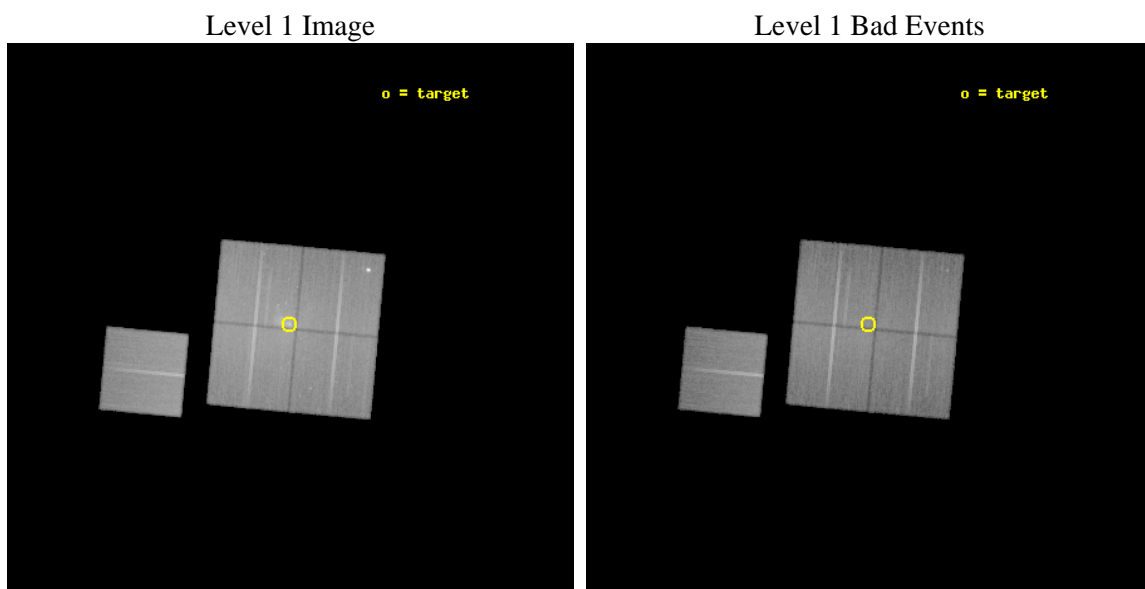




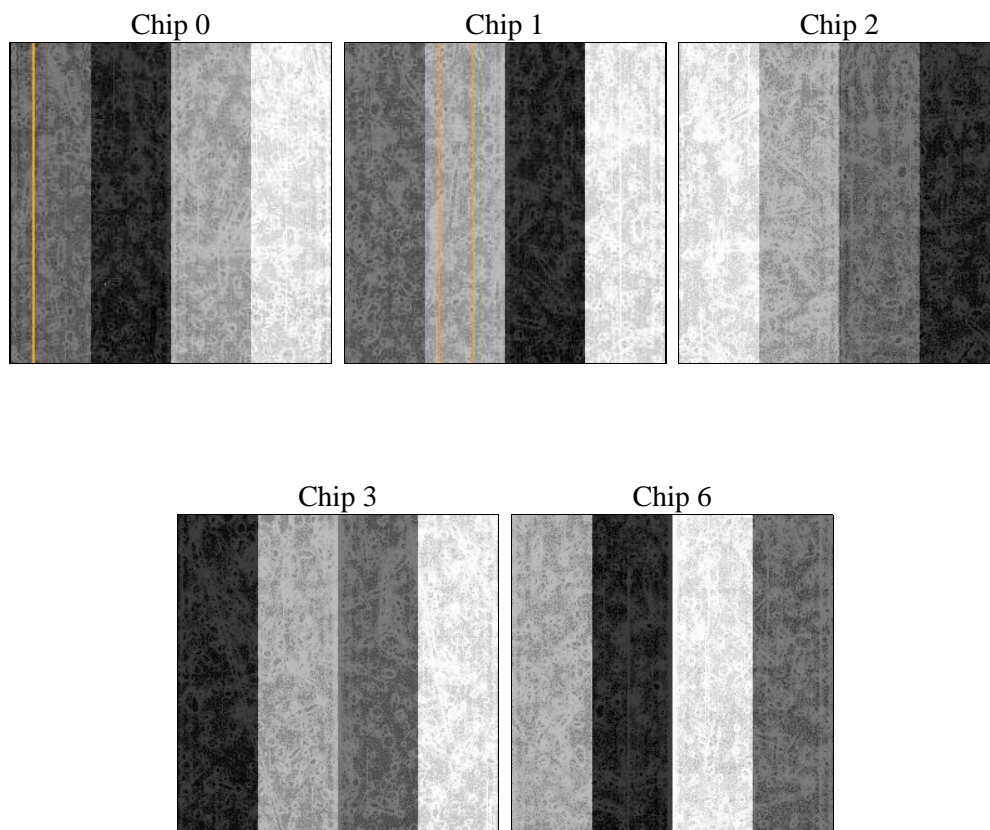
## 2 OBI

### 2.1 OBI

#### 2.1.1 Images



#### 2.1.2 Bias



### 2.1.3 Parameters

obi_num	1	Obi number	sched_exp_time	45800.000000	[s] Scheduled observation exposure time
ascdsver	8.5.1.1	Processing system revision	ontime	45960.5999116	Sum of GTIs [s]
caldbver	4.5.5	&#160	ontime0	45938.612940043	Sum of GTIs [s]
date	2012-12-26T17:16:23	Date and time of file creation	ontime1	45960.5999116	Sum of GTIs [s]
revision	3	Processing version of data	ontime2	45960.5999116	Sum of GTIs [s]
			ontime3	45960.5999116	Sum of GTIs [s]
			ontime6	45960.5999116	Sum of GTIs [s]
			l1events	2257323	Number of level 1 events

### 2.1.4 Events

	ccd 0	ccd 1	ccd 2	ccd 3	ccd 6		ccd 0	ccd 1	ccd 2	ccd 3	ccd 6
level 1 events	402271	434366	478934	509456	432296	grade 0 events	47474	58701	57519	85770	31407
rejected events	314946	327103	379469	369279	367239		11%	13%	12%	16%	7%
rejected %	78%	75%	79%	72%	84%	grade 1 events	400	398	519	674	236
							0%	0%	0%	0%	0%
						grade 2 events	18098	21174	19263	23095	14957
							4%	4%	4%	4%	3%
						grade 3 events	6207	7409	6320	8896	4902
							1%	1%	1%	1%	1%
						grade 4 events	5944	7305	6880	8807	4972
							1%	1%	1%	1%	1%
						grade 5 events	14914	16058	14450	17083	17021
							3%	3%	3%	3%	3%
						grade 6 events	11966	15186	12075	16012	11126
							2%	3%	2%	3%	2%
						grade 7 events	297268	308135	361908	349119	347675
							73%	70%	75%	68%	80%

## 2.2 Compared Parameters

Parameter	Planned	Actual	Parameter	Planned	Actual
Instrument	ACIS	ACIS	Obspar format version number	7	7
Detector	ACIS-01236	ACIS-01236	Obspar file type	PREDICTED	ACTUAL
Grating	NONE	NONE	Obspar update status	NONE	UPDATED
Data mode	FAINT	FAINT	Number of optional ACIS chips dropped	0	0
Observation mode	POINTING	POINTING	On-chip summing requested	N	N
[deg] Pointing RA	266.396872	266.4150596466891	Subarray requested	NONE	NONE
[deg] Pointing Dec	-28.989898	-29.01221075199321	Alternating exposures requested	N	N
[deg] Pointing Roll	275.065390	275.2828878473424	[s] Primary exposure time	0.000000	3.1
[s] Window start time (MET)	239138584.184000	239138584.184000			
[s] Window stop time (MET)	239187604.184000	239187604.184000			
[mm] SIM focus pos	-0.782348	-0.7809083437167272			
[mm] SIM defocus	0	0.001439871863259334			
[mm] SIM translation stage pos	-233.592463	-233.5874344608287			
[mm] SIM translation stage offset	0	-0.005018542100998502			
[s] Observation start time (MET)	239141511.184000	239139511.15236			
Observation start date	2005-07-30T20:10:47	2005-07-30T19:38:31			
[s] Observation end time (MET)	239187311.184000	239188352.4046			
Observation end date	2005-07-31T08:54:07	2005-07-31T09:12:32			
Read mode	TIMED	TIMED			

## 2.3 Aspect

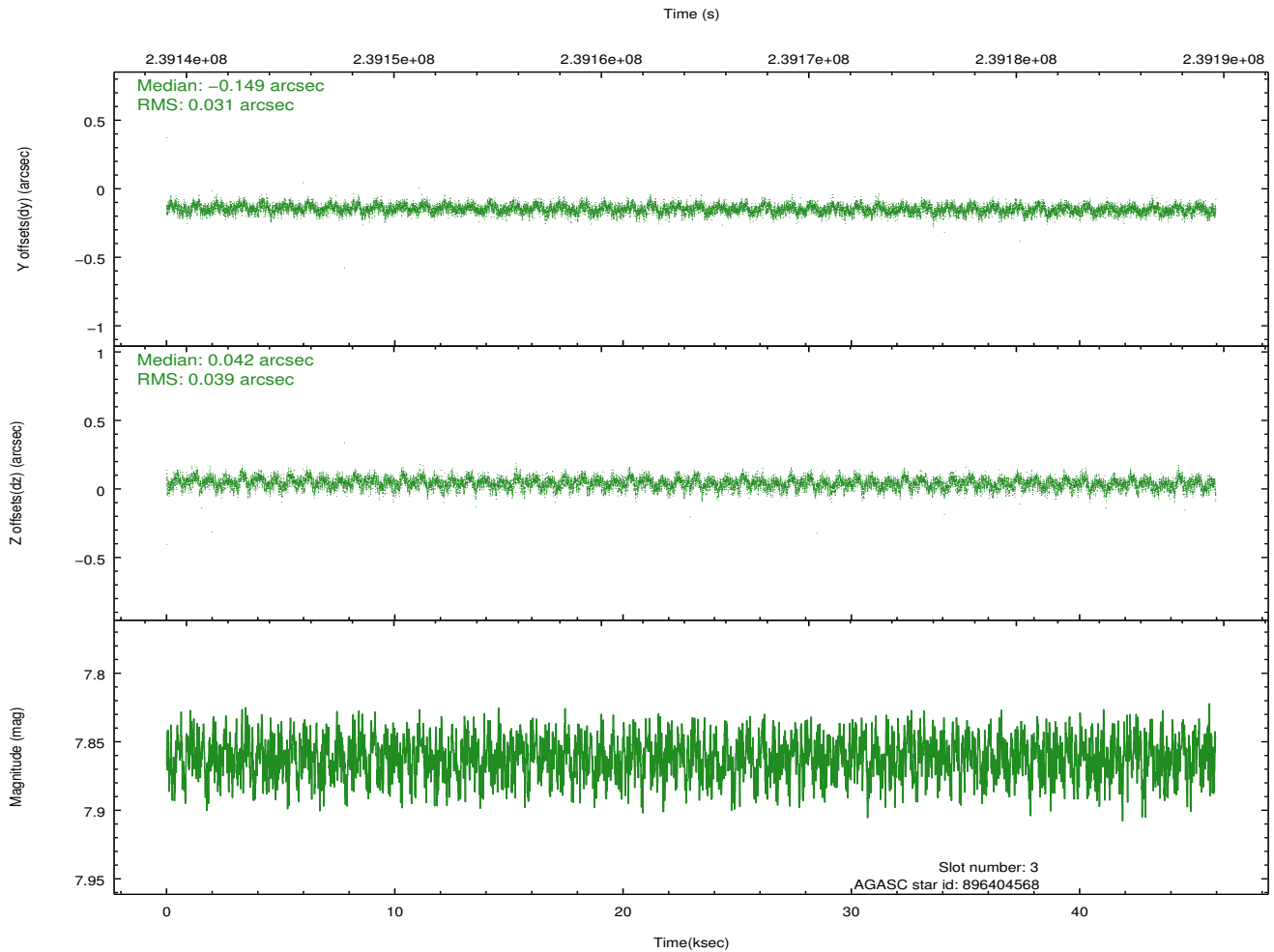
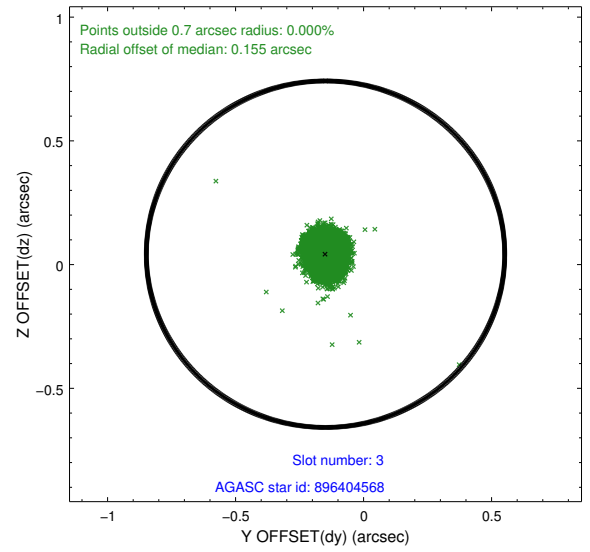
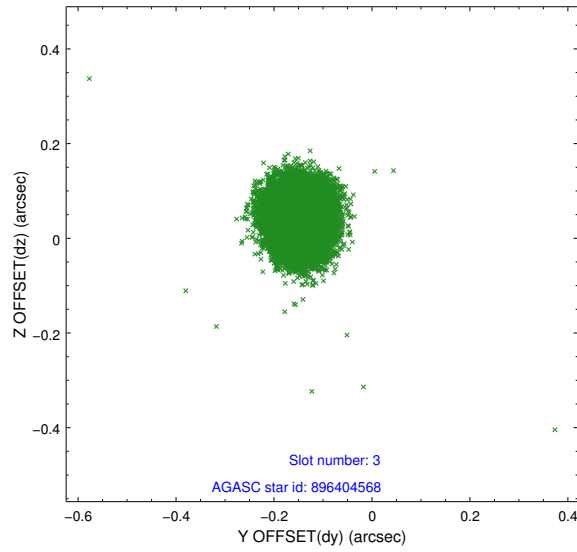


### Slot Statistics

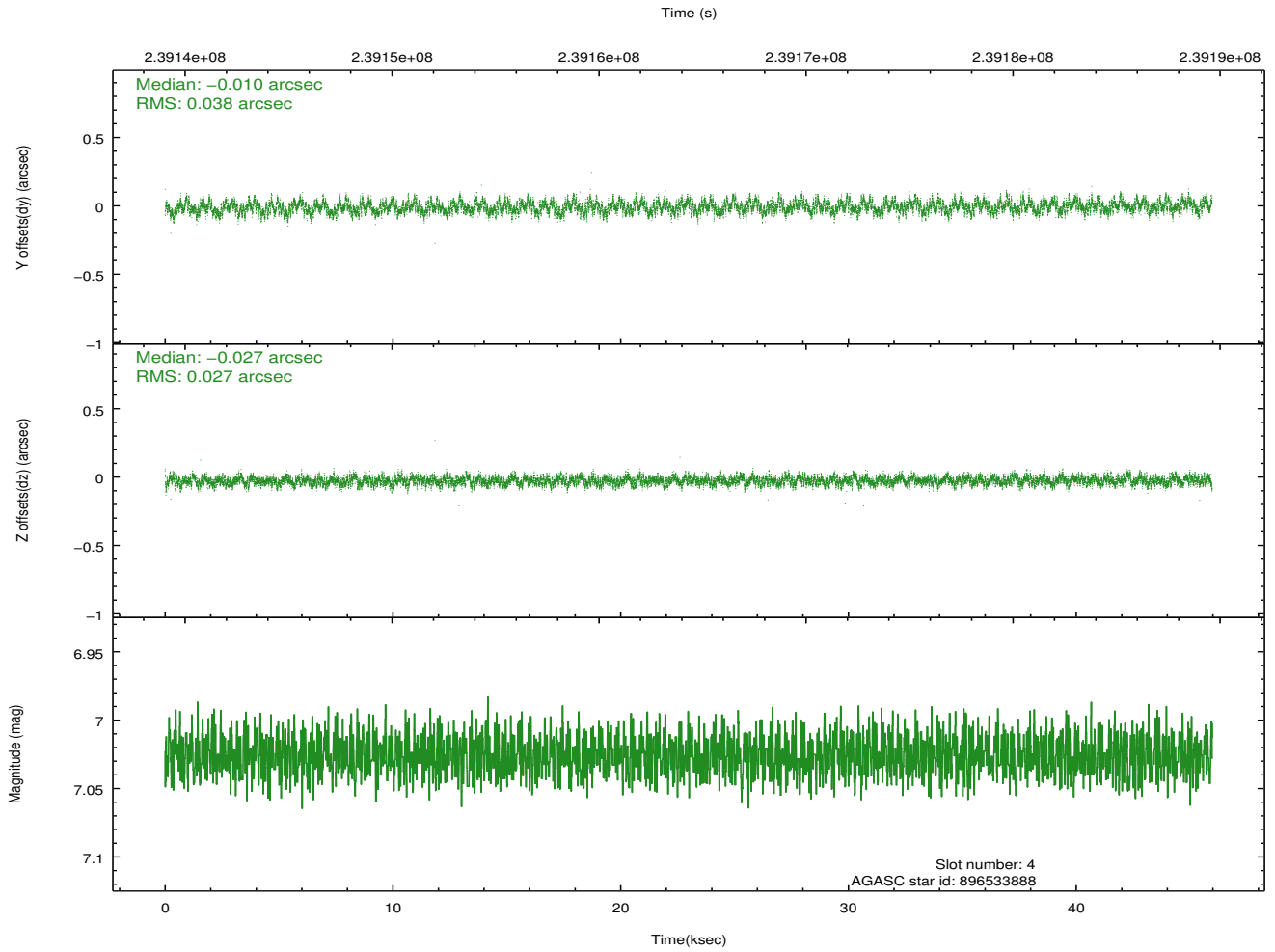
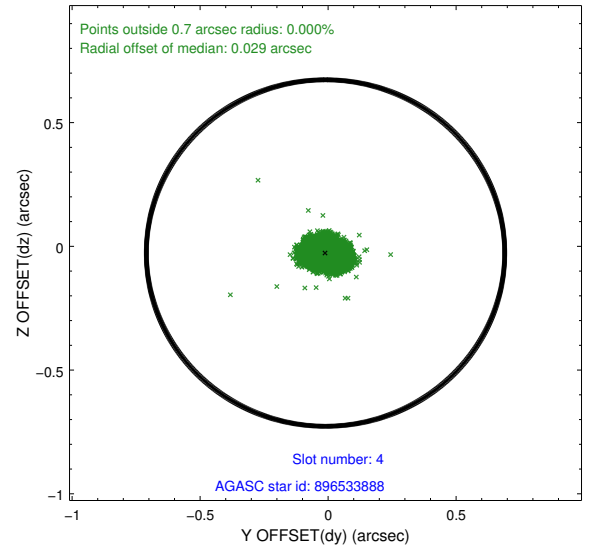
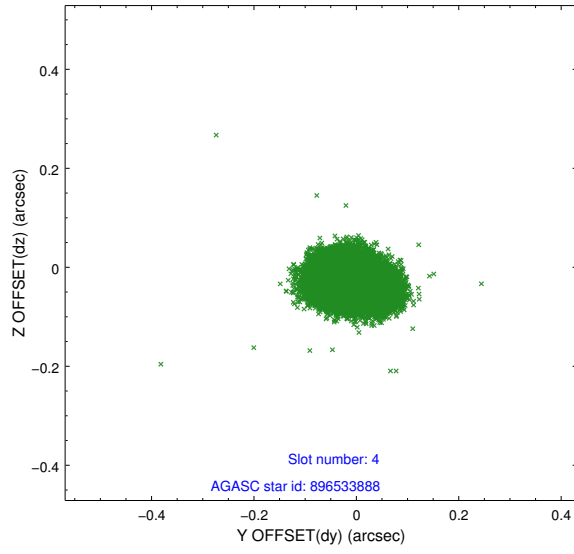
slot	status	id	mag	n_pts	med_dy	med_dz	dr1	dr2	ra	dec	mean_y	mean_z
0	FID	ACIS-I-1	7.25	11209	-0.024	0.045	0.015	0.079	0.000000	0.000000	932.32	-833.52
1	FID	ACIS-I-4	7.19	11209	0.140	0.005	0.019	0.055	0.000000	0.000000	2152.55	1066.24
2	FID	ACIS-I-5	7.23	11210	-0.213	0.021	0.014	0.033	0.000000	0.000000	-1815.85	1064.15
3	GUIDE	896404568	7.86	22419	-0.149	0.042	0.053	0.086	265.687293	-28.431080	-2195.36	-2060.67
4	GUIDE	896533888	7.02	22420	-0.010	-0.027	0.050	0.081	266.666434	-29.392757	1520.33	714.25
5	GUIDE	896534664	8.19	22416	0.209	-0.112	0.053	0.087	266.405570	-28.407461	-2085.65	212.48
6	GUIDE	896540808	7.48	22422	0.023	0.065	0.051	0.081	265.985401	-29.308604	1031.37	-1387.84
7	GUIDE	896541576	8.19	22418	-0.075	0.033	0.058	0.090	267.051055	-28.762912	-625.98	2128.15

## 2.4 Star Slots

### 2.4.1 Slot 3

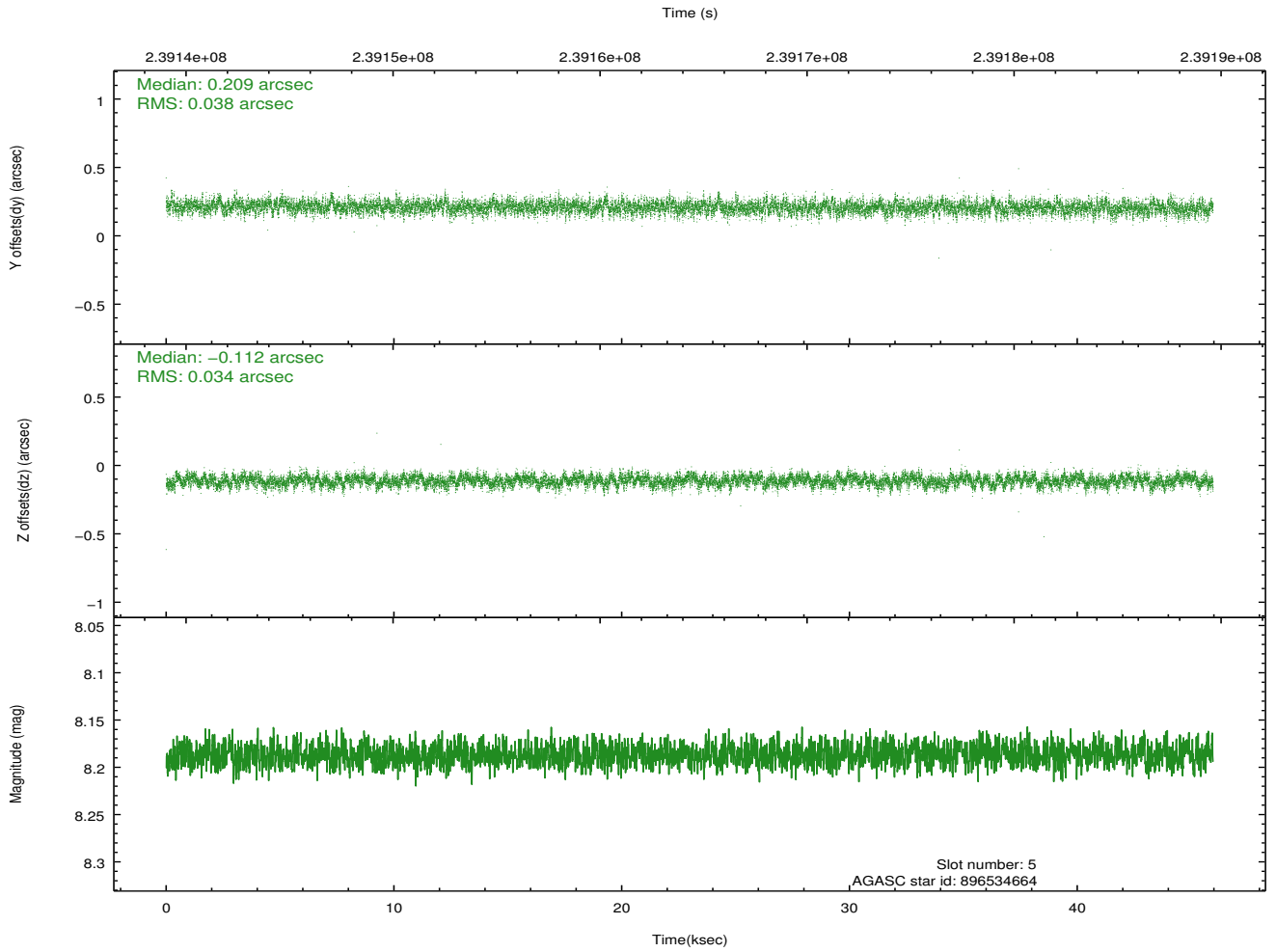
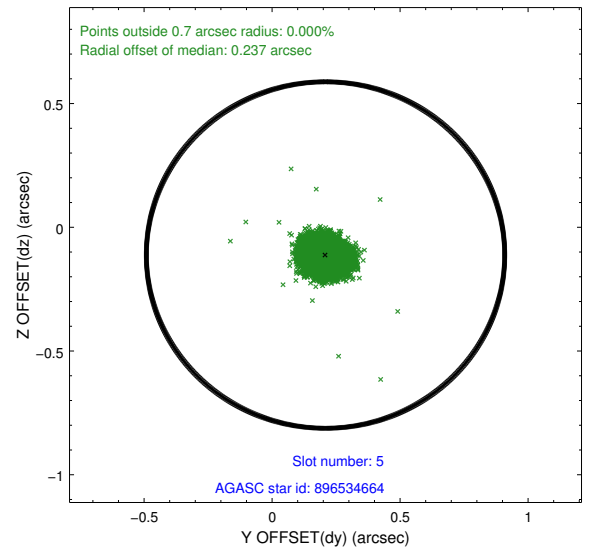
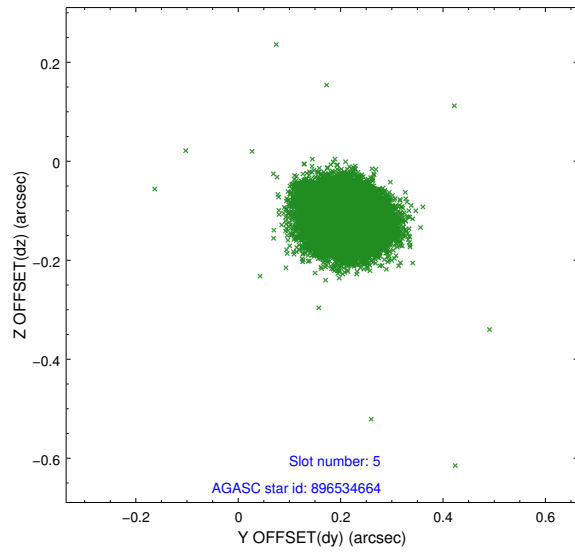


## 2.4.2 Slot 4

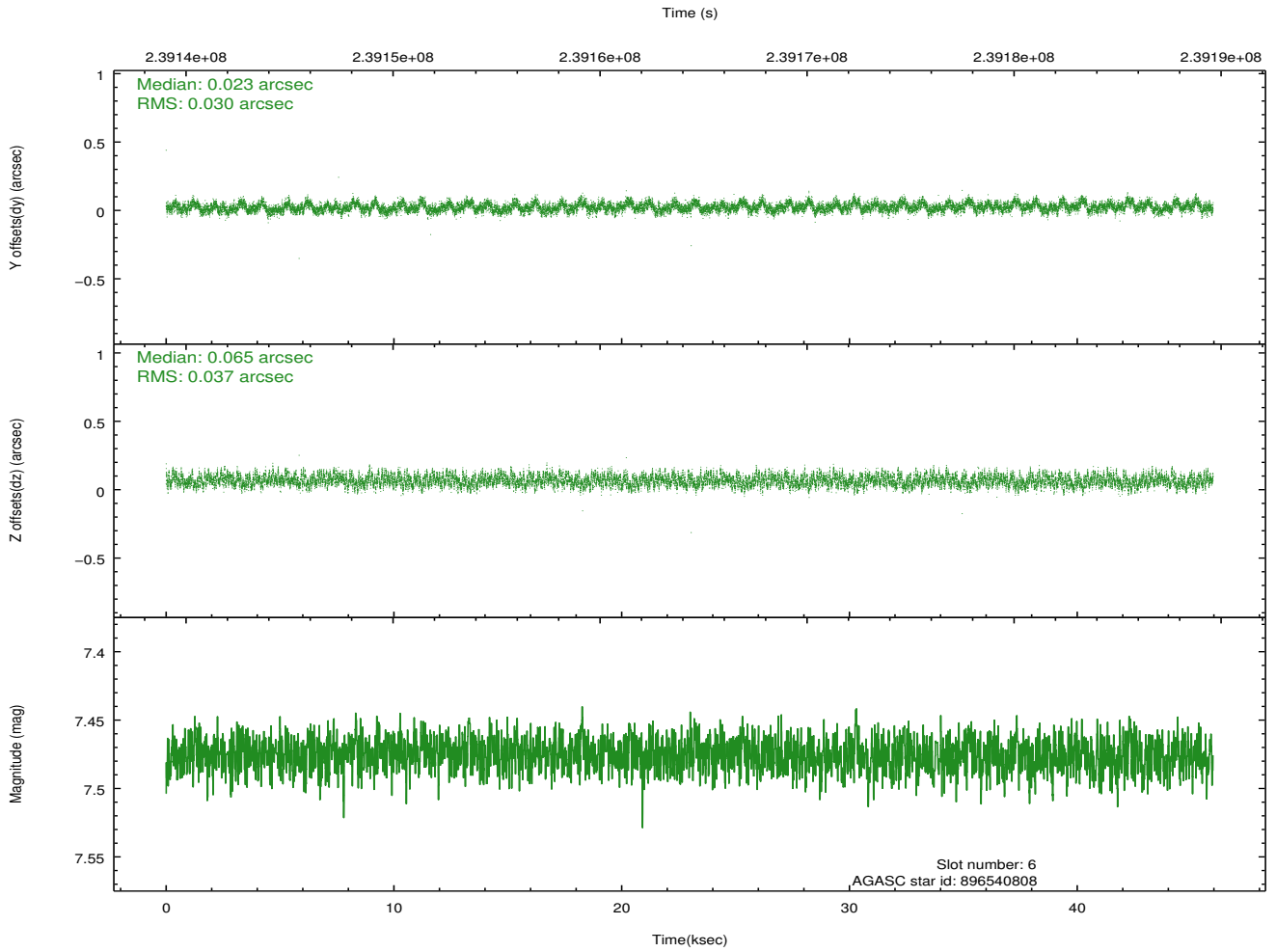
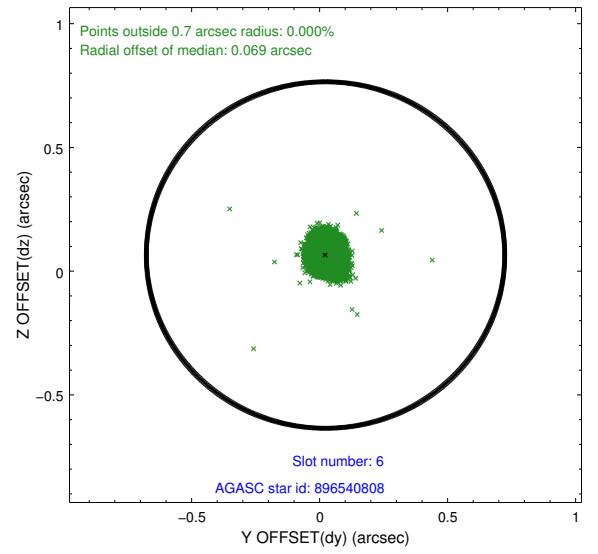
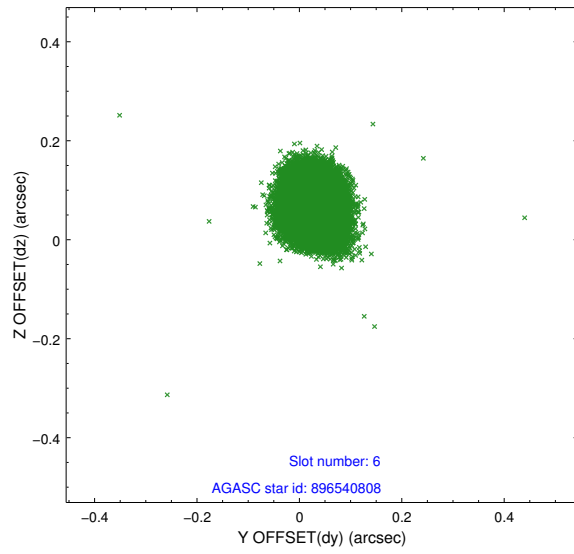




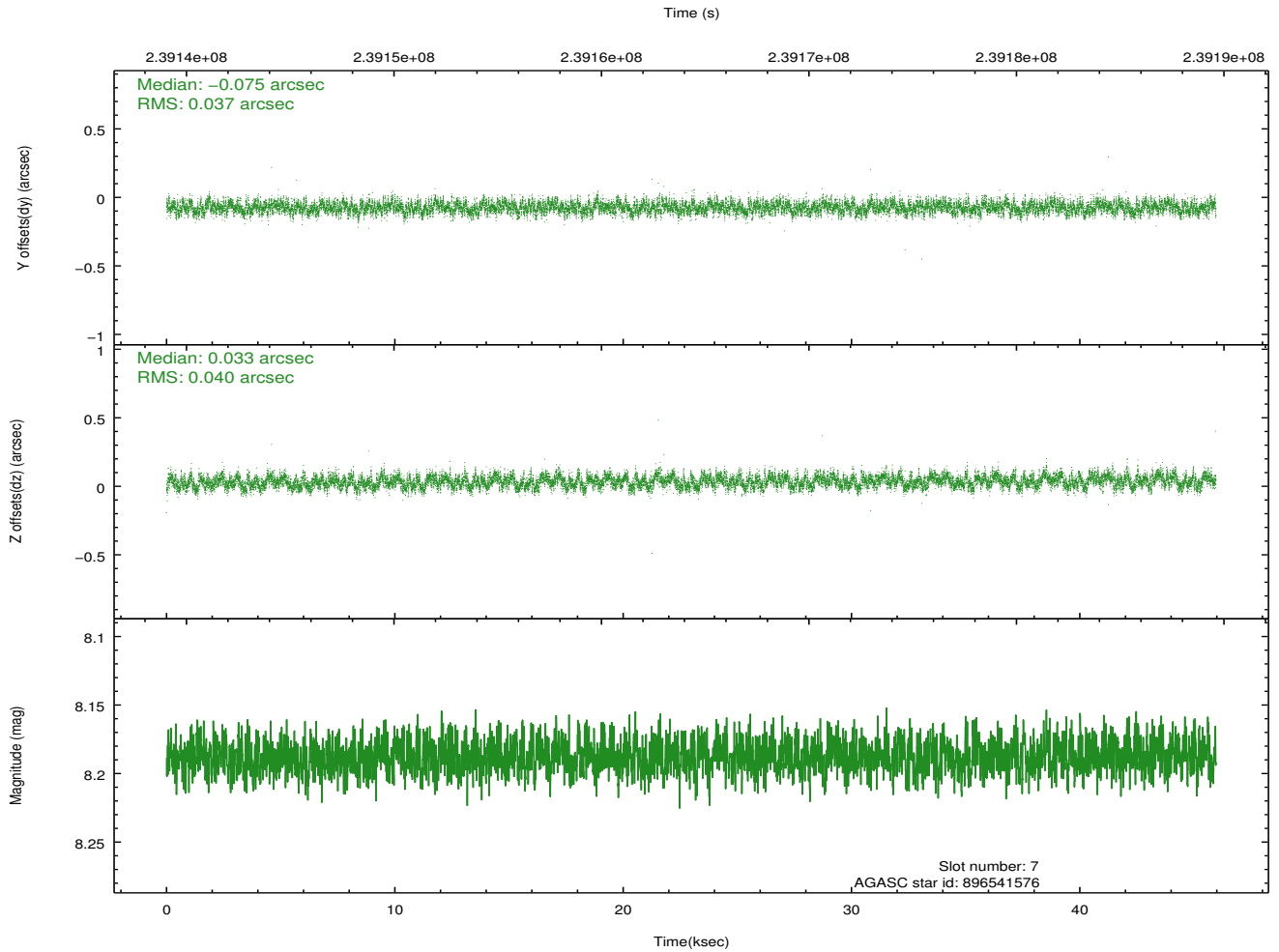
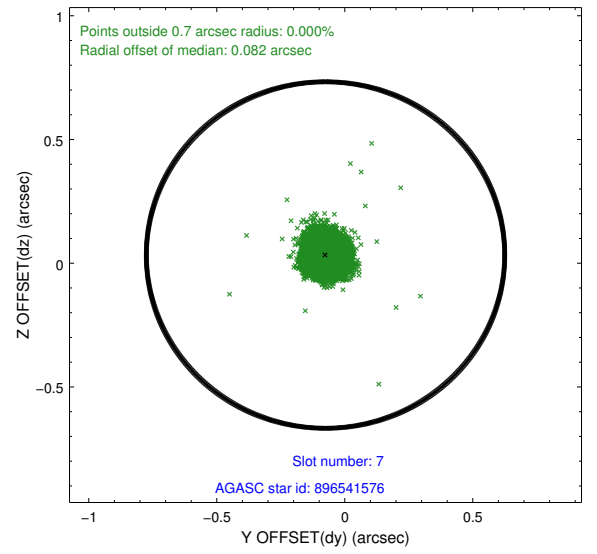
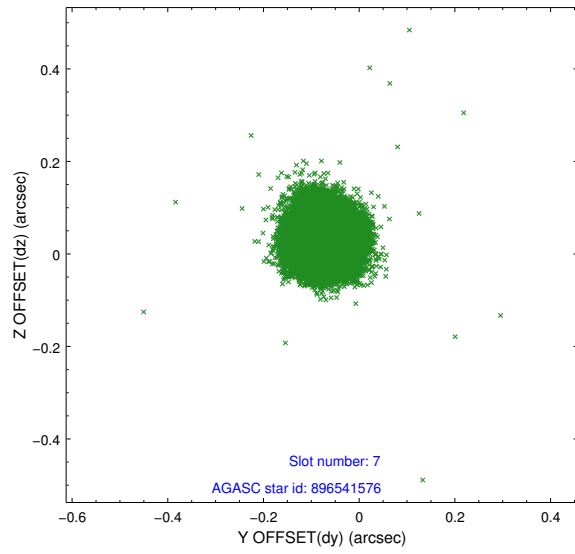
### 2.4.3 Slot 5



## 2.4.4 Slot 6

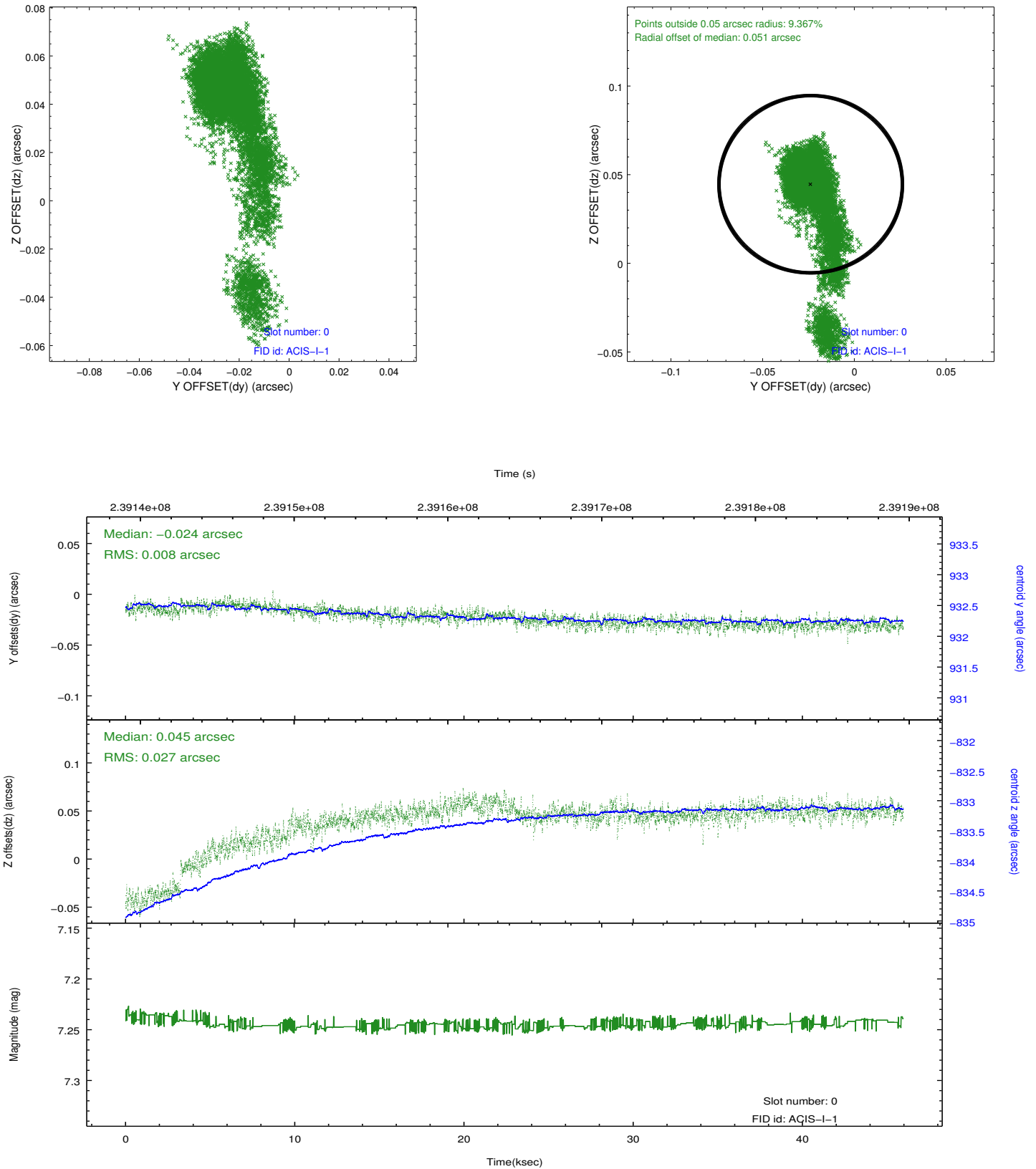


## 2.4.5 Slot 7

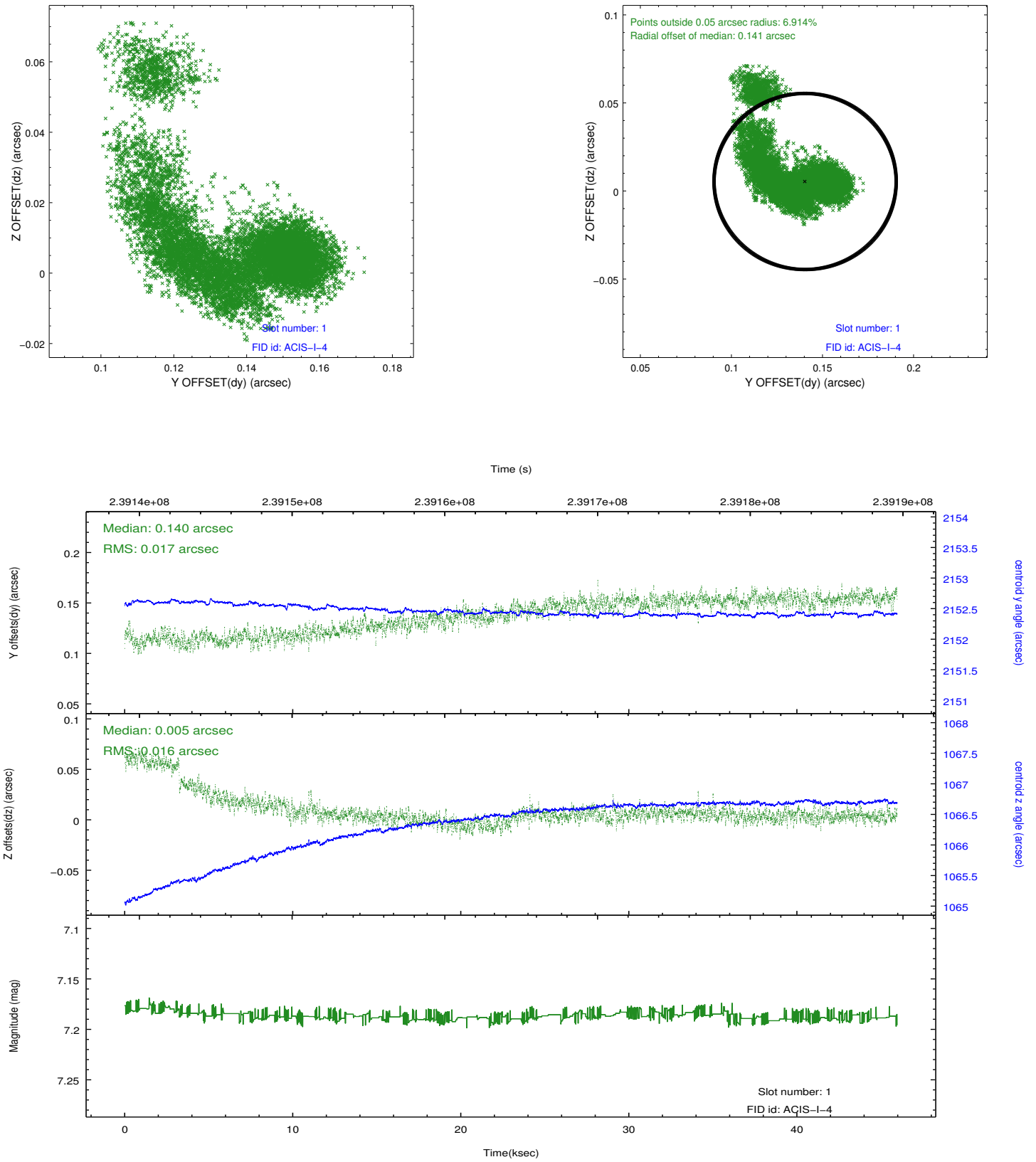


## 2.5 FID Slots

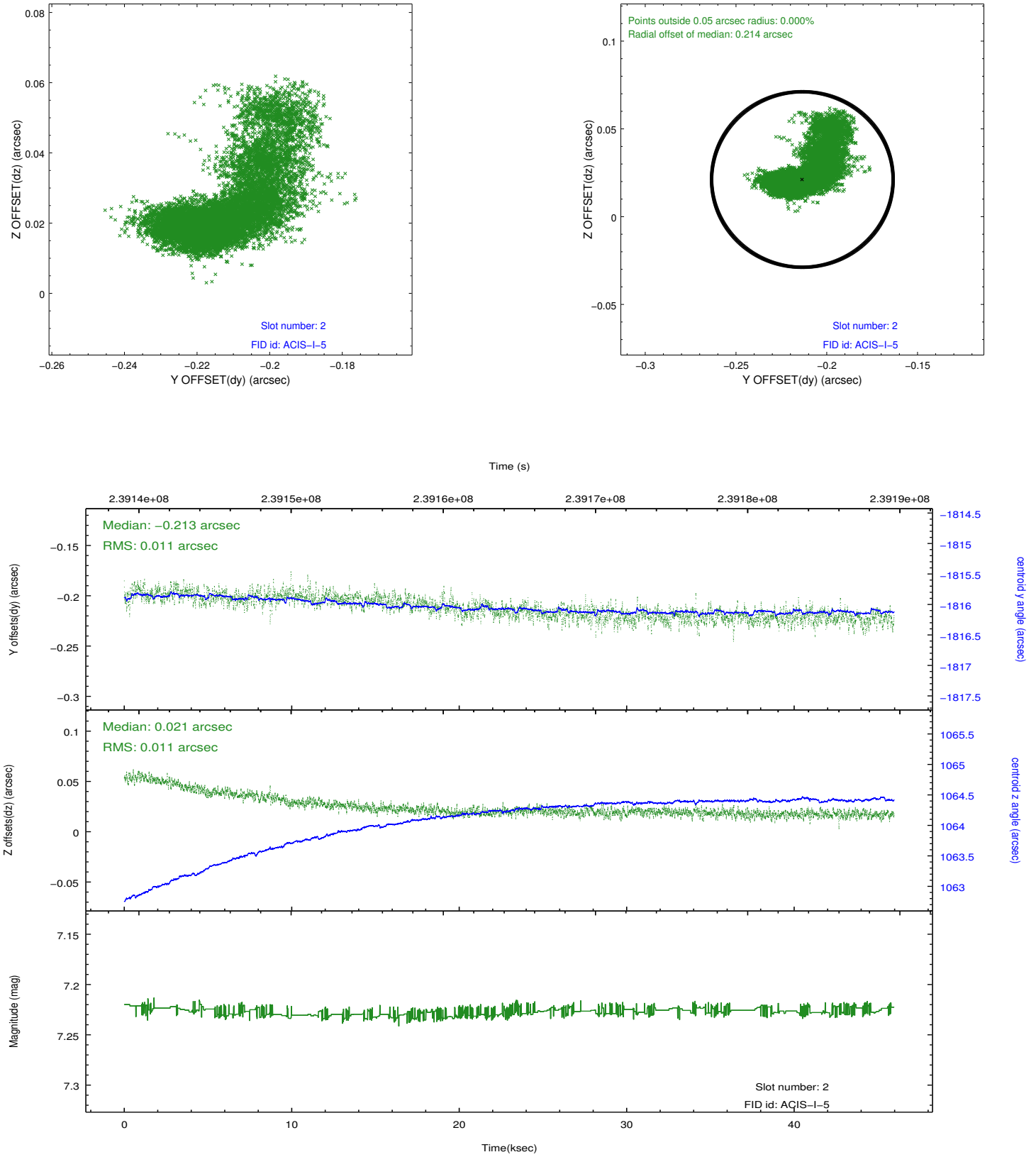
### 2.5.1 Slot 0



## 2.5.2 Slot 1



### 2.5.3 Slot 2



## A Summary

### A.1 Status

V&V Scientist	Jen Lauer
V&V Date (YYYY-MM-DD)	2013.01.23
V&V Edition	1
V&V Disposition and Status	OK
V&V Charge Time	45.9606

### A.2 Comments

Window constraint met.