

# V&V Reference Report

## L2 ASCDS Version : 7.6.7.1

Observation 59503 - L2 Version 002  
Chandra X-Ray Center

L2 Processing Date : Mar 19 2006

## Contents

<b>1</b>	<b>Front</b>	<b>2</b>
<b>2</b>	<b>OBI</b>	<b>3</b>
2.1	OBI . . . . .	3
2.1.1	Images . . . . .	3
2.1.2	Bias . . . . .	3
2.1.3	Parameters . . . . .	4
2.1.4	Events . . . . .	4
2.2	Compared Parameters . . . . .	5
2.3	Aspect . . . . .	6
2.4	Star Slots . . . . .	8
2.5	FID Slots . . . . .	8
<b>A</b>	<b>Summary</b>	<b>9</b>
A.1	Status . . . . .	9
A.2	Comments . . . . .	9

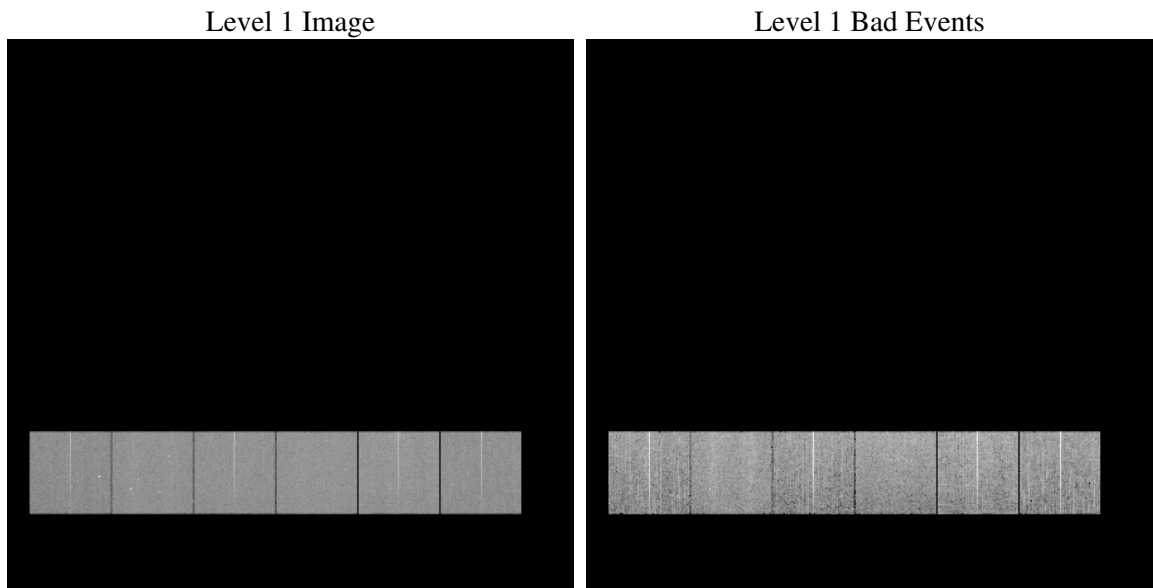
# 1 Front

seq_num	&#160
obs_id	59503
title	ACIS-456789 diagnostics
observer	CHANDRA engineering request/realtime commanding
object	&#160
dtcycle	0
cycle	P
ra_targ	0.0
dec_targ	0.0
ra_nom	359.97619734773
dec_nom	0.015824935203204
roll_nom	113.51665696181
revision	2
ontime	8273.8555442393
livetime	8169.0870034204
ontime4	7479.9377858043
ontime5	8273.8965842426
ontime6	8150.7805026174
ontime7	8273.8555442393
ontime8	8248.0918518603
ontime9	7927.029702127
l2events	1040679

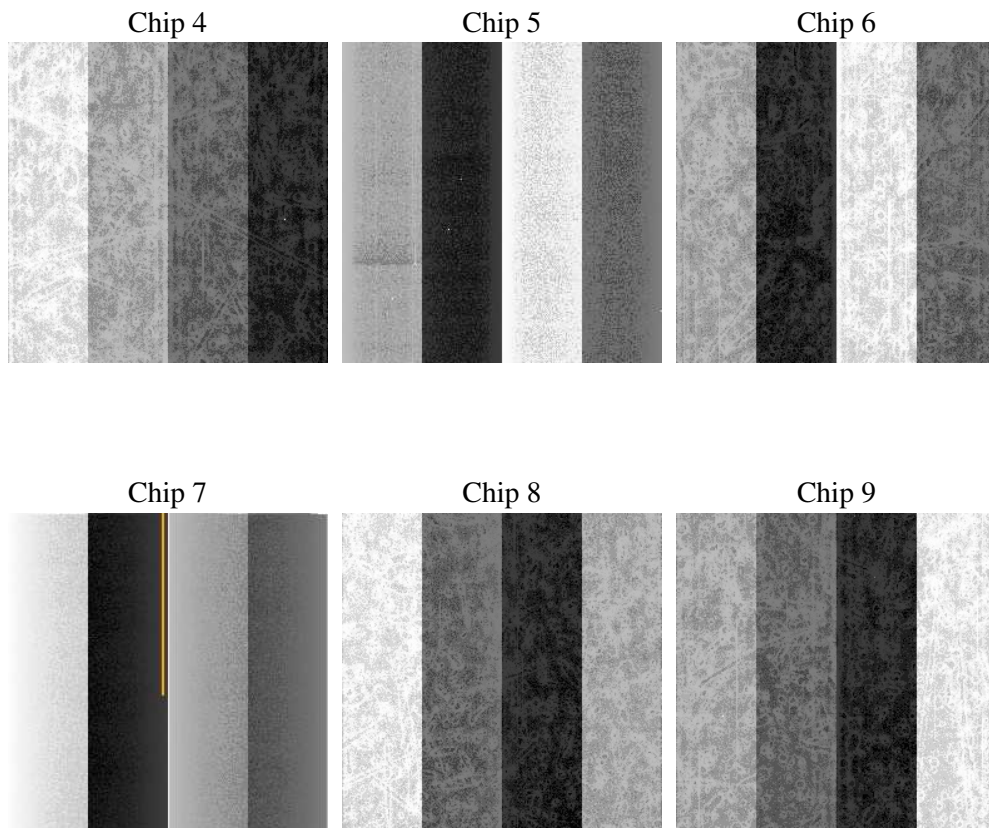
## 2 OBI

### 2.1 OBI

#### 2.1.1 Images



#### 2.1.2 Bias



### 2.1.3 Parameters

obi_num	0
ascdsver	7.6.7.1
caldsver	3.2.1
date	2006-03-19T15:29:12
revision	2

sched_exp_time	0.0
ontime	8274.2949292958
ontime4	7480.2540508509
ontime5	8274.2949292958
ontime6	8151.1378076673
ontime7	8274.2949292958
ontime8	8248.3670769334
ontime9	7927.5101271868
l1events	1482447

### 2.1.4 Events

	ccd 4	ccd 5	ccd 6	ccd 7	ccd 8	ccd 9
level 1 events	221177	246677	248259	258648	268407	239279
rejected events	59467	64753	59212	60255	67796	61236
rejected %	26%	26%	23%	23%	25%	25%

	ccd 4	ccd 5	ccd 6	ccd 7	ccd 8	ccd 9
grade 0 events	96271	16250	99280	29966	108610	98887
	43%	6%	39%	11%	40%	41%
grade 1 events	748	122	441	98	526	520
	0%	0%	0%	0%	0%	0%
grade 2 events	23351	83437	35834	62188	35243	29620
	10%	33%	14%	24%	13%	12%
grade 3 events	10881	5134	11387	13142	12990	11370
	4%	2%	4%	5%	4%	4%
grade 4 events	10741	4726	11244	12639	12942	11207
	4%	1%	4%	4%	4%	4%
grade 5 events	3179	5661	3403	6351	4360	3762
	1%	2%	1%	2%	1%	1%
grade 6 events	20466	72377	31302	80458	30826	26959
	9%	29%	12%	31%	11%	11%
grade 7 events	55540	58970	55368	53806	62910	56954
	25%	23%	22%	20%	23%	23%

## 2.2 Compared Parameters

Parameter	Planned	Actual	Parameter	Planned	Actual
Instrument	ACIS	ACIS	Obspar format version number	6	6
Detector	ACIS-456789	ACIS-456789	Obspar file type	PREDICTED	ACTUAL
Grating	NONE	NONE	Obspar update status	NONE	UPDATED
Data mode	FAINT	FAINT	On-chip summing requested	N	N
Observation mode	SECONDARY	SECONDARY	Subarray requested	NONE	NONE
Pointing RA	0	359.9761973477324	Alternating exposures requested	N	N
Pointing Dec	0	0.0158249352032037	Primary exposure time	3.2	3.2
Pointing Roll	0.0	113.5166569618138			
SIM focus pos (mm)	-0.684267	-0.7809083437167272			
SIM defocus (mm)	0	0.7524282956875696			
SIM translation stage pos (mm)	-190.132523	250.466033080201			
SIM translation stage offset (mm)	0	-0.01005468664627074			
Observation start time	240377246.371576	240377245.34658			
Observation start date	2005-08-14T03:27:26	2005-08-14T03:27:25			
Observation end time	240398558.172553	240398557.14755			
Observation end date	2005-08-14T09:22:38	2005-08-14T09:22:37			
Read mode	TIMED	TIMED			

## 2.3 Aspect



## 2.4 Star Slots

## 2.5 FID Slots



## A Summary

### A.1 Status

V&V Scientist	Doug Morgan
V&V Date (YYYY-MM-DD)	2006.03.20
V&V Edition	1
V&V Disposition and Status	OK
V&V Charge Time	8.27385554

### A.2 Comments

FP Temps high at 157–158.