

V&V Reference Report

L2 ASCDS Version : 8.5.1.1

Observation 59383 - L2 Version 3
Chandra X-Ray Center

L2 Processing Date : Dec 30 2012

Contents

1	Front	2
2	OBI	3
2.1	OBI	3
2.1.1	Images	3
2.1.2	Bias	3
2.1.3	Parameters	4
2.1.4	Events	4
2.2	Compared Parameters	5
2.3	Star Slots	6
2.4	FID Slots	6
A	Summary	7
A.1	Status	7
A.2	Comments	7

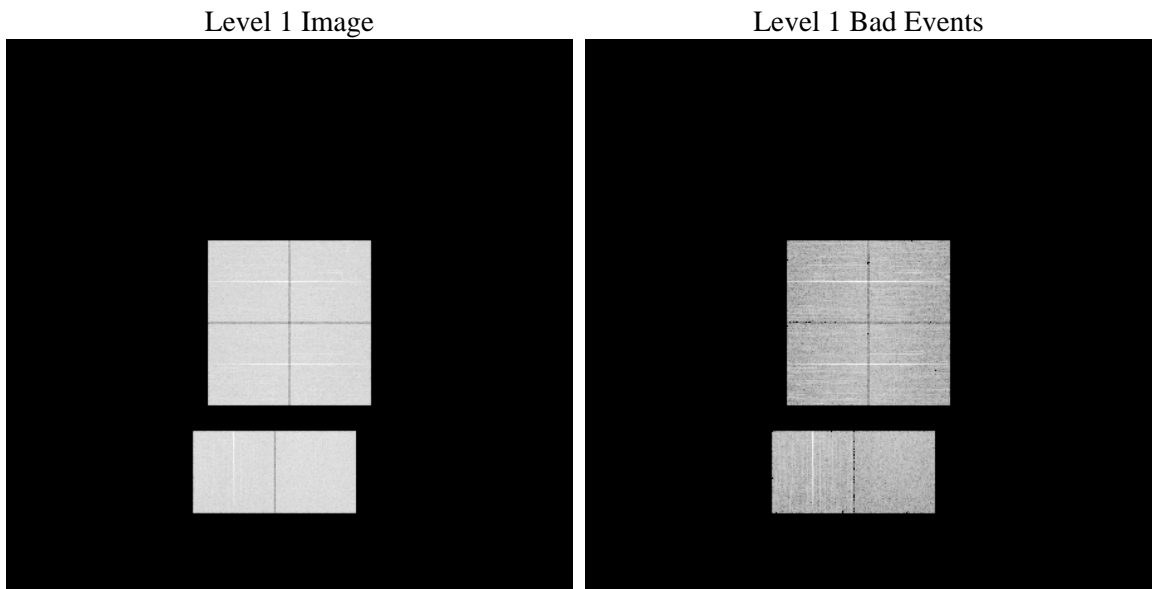
1 Front

seq_num	 	Sequence number
obs_id	59383	Observation id
title	ACIS-012367 diagnostics	Proposal title
observer	CHANDRA engineering request/realtime commanding	Principal investig
object	 	Source name
dtcycle	0	
cycle	P	events from which exps? Prim/Second/Both
ra_targ	0.0	Observer's specified target RA [deg]
dec_targ	0.0	Observer's specified target Dec [deg]
ra_nom	15.574987059756	Nominal RA [deg]
dec_nom	36.579621706041	Nominal Dec [deg]
roll_nom	192.57471138909	Nominal Roll [deg]
revision	3	Processing version of data
ontime	8284.7999691367	Sum of GTIs [s]
livetime	8179.8928434199	Livetime [s]
ontime0	8284.7999691367	Sum of GTIs [s]
ontime1	8284.7999691367	Sum of GTIs [s]
ontime2	8284.7999691367	Sum of GTIs [s]
ontime3	8284.7999691367	Sum of GTIs [s]
ontime6	8284.7999691367	Sum of GTIs [s]
ontime7	8284.7999691367	Sum of GTIs [s]
l2events	1061448	Number of level 2 events

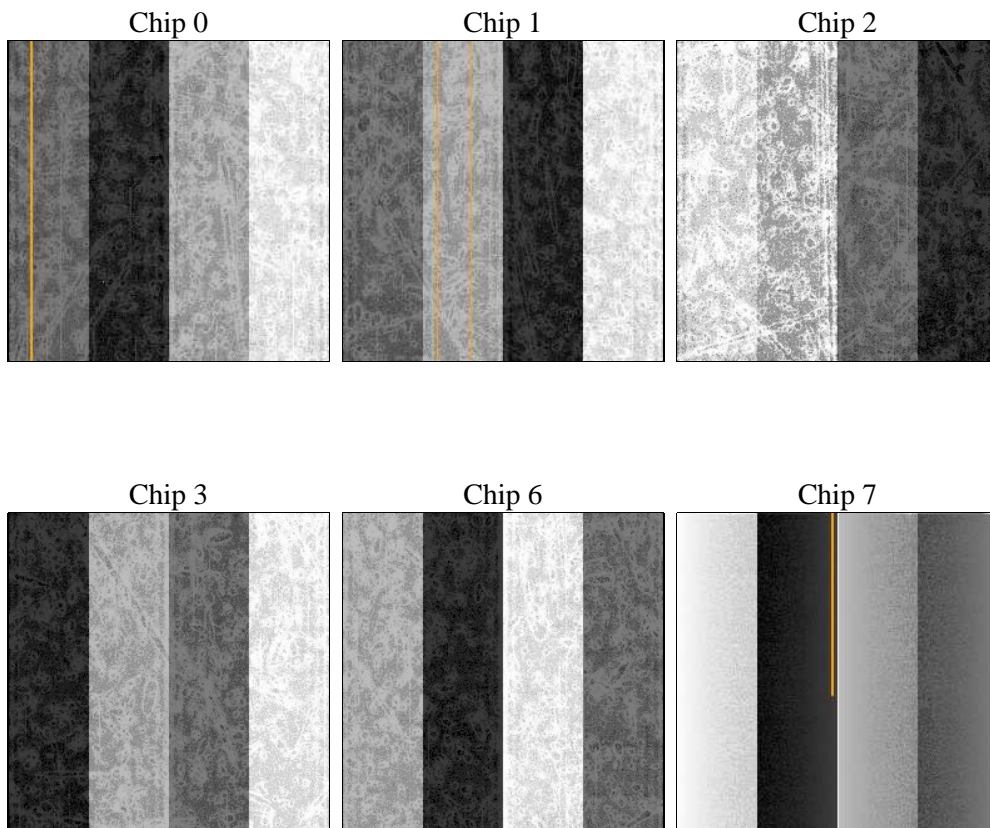
2 OBI

2.1 OBI

2.1.1 Images



2.1.2 Bias



2.1.3 Parameters

obi_num	0	Obi number	sched_exp_time	0.0	[s] Scheduled observation exposure time
ascdsver	8.5.1.1	Processing system revision	ontime	8284.7999691367	Sum of GTIs [s]
caldbver	4.5.5	 	ontime0	8284.7999691367	Sum of GTIs [s]
date	2012-12-30T20:38:15	Date and time of file creation	ontime1	8284.7999691367	Sum of GTIs [s]
revision	3	Processing version of data	ontime2	8284.7999691367	Sum of GTIs [s]
			ontime3	8284.7999691367	Sum of GTIs [s]
			ontime6	8284.7999691367	Sum of GTIs [s]
			ontime7	8284.7999691367	Sum of GTIs [s]
			l1events	1478570	Number of level 1 events

2.1.4 Events

	ccd 0	ccd 1	ccd 2	ccd 3	ccd 6	ccd 7		ccd 0	ccd 1	ccd 2	ccd 3	ccd 6	ccd 7
level 1 events	237503	240080	244119	243827	252219	260822	grade 0 events	98064	97424	100814	101660	102070	48195
rejected events	58487	60393	62692	62180	63814	53721		41%	40%	41%	41%	40%	18%
rejected %	24%	25%	25%	25%	25%	20%	grade 1 events	629	508	671	651	543	183
								0%	0%	0%	0%	0%	0%
							grade 2 events	31395	32419	30732	30794	32471	45408
								13%	13%	12%	12%	12%	17%
							grade 3 events	11669	11472	12017	12008	11671	20297
								4%	4%	4%	4%	4%	7%
							grade 4 events	11782	11542	11960	11824	11822	20258
								4%	4%	4%	4%	4%	7%
							grade 5 events	3560	3735	3376	3799	3887	9327
								1%	1%	1%	1%	1%	3%
							grade 6 events	26185	26892	25980	25427	30439	73031
								11%	11%	10%	10%	12%	28%
							grade 7 events	54219	56088	58569	57664	59316	44123
								22%	23%	23%	23%	23%	16%

2.2 Compared Parameters

Parameter	Planned	Actual	Parameter	Planned	Actual
Instrument	ACIS	ACIS	Obspar format version number	7	7
Detector	ACIS-012367	ACIS-012367	Obspar file type	PREDICTED	ACTUAL
Grating	NONE	NONE	Obspar update status	NONE	UPDATED
Data mode	FAINT	FAINT	On-chip summing requested	N	N
Observation mode	SECONDARY	SECONDARY	Subarray requested	NONE	NONE
[deg] Pointing RA	0	15.57498705975615	Alternating exposures requested	N	N
[deg] Pointing Dec	0	36.57962170604132	[s] Primary exposure time	3.2	3.2
[deg] Pointing Roll	0.0	192.5747113890851			
[mm] SIM focus pos	-0.782348	-0.7809083437167272			
[mm] SIM defocus	0	0.7524282956875696			
[mm] SIM translation stage pos	-233.592463	250.466033080201			
[mm] SIM translation stage offset	0	-0.01005468664627074			
[s] Observation start time (MET)	245858731.373475	245858730.34848			
Observation start date	2005-10-16T14:05:31	2005-10-16T14:05:30			
[s] Observation end time (MET)	245880043.174456	245880042.14946			
Observation end date	2005-10-16T20:00:43	2005-10-16T20:00:42			
Read mode	TIMED	TIMED			

2.3 Star Slots

2.4 FID Slots

A Summary

A.1 Status

V&V Scientist	Beth Sundheim
V&V Date (YYYY-MM-DD)	2013.01.27
V&V Edition	1
V&V Disposition and Status	OK
V&V Charge Time	8.2847999691367

A.2 Comments