

V&V Reference Report

L2 ASCDS Version : 7.6.7.1

Observation 59353 - L2 Version 002
Chandra X-Ray Center

L2 Processing Date : Apr 5 2006

Contents

1	Front	2
2	OBI	3
2.1	OBI	3
2.1.1	Images	3
2.1.2	Bias	3
2.1.3	Parameters	4
2.1.4	Events	4
2.2	Compared Parameters	5
2.3	Aspect	6
2.4	Star Slots	8
2.5	FID Slots	8
A	Summary	9
A.1	Status	9
A.2	Comments	9

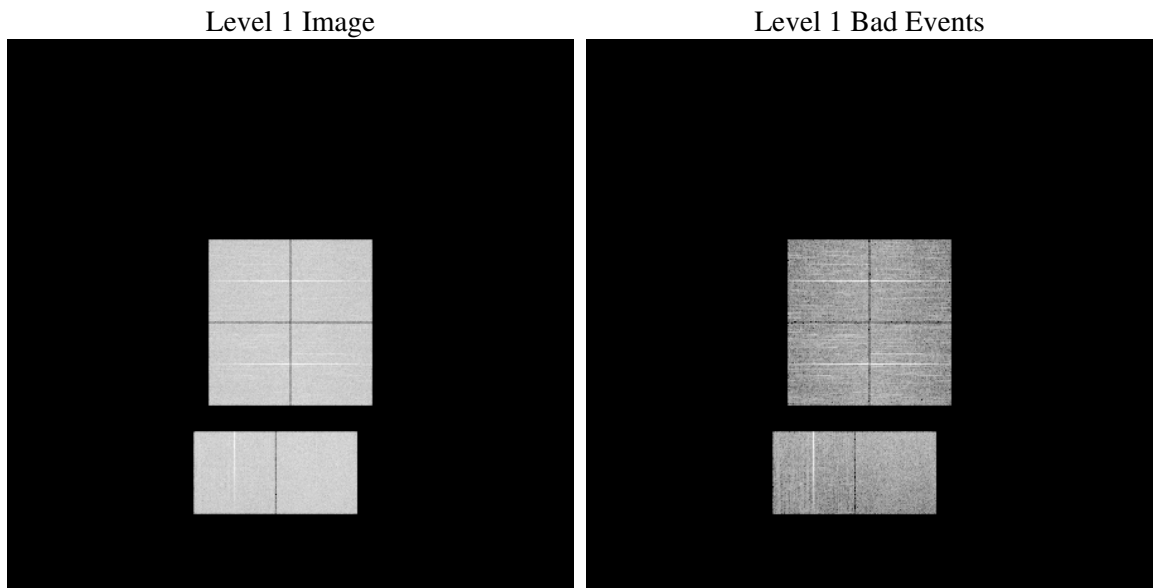
1 Front

seq_num	
obs_id	59353
title	ACIS-012367 diagnostics
observer	CHANDRA engineering request/realtime commanding
object	
dtcycle	0
cycle	P
ra_targ	0.0
dec_targ	0.0
ra_nom	51.960979068579
dec_nom	42.998172674557
roll_nom	150.79440219503
revision	2
ontime	8278.3999691606
livetime	8173.573884097
ontime0	8278.3999691606
ontime1	8278.3999691606
ontime2	8278.3999691606
ontime3	8278.3999691606
ontime6	8275.1589789391
ontime7	8278.3999691606
l2events	1036327

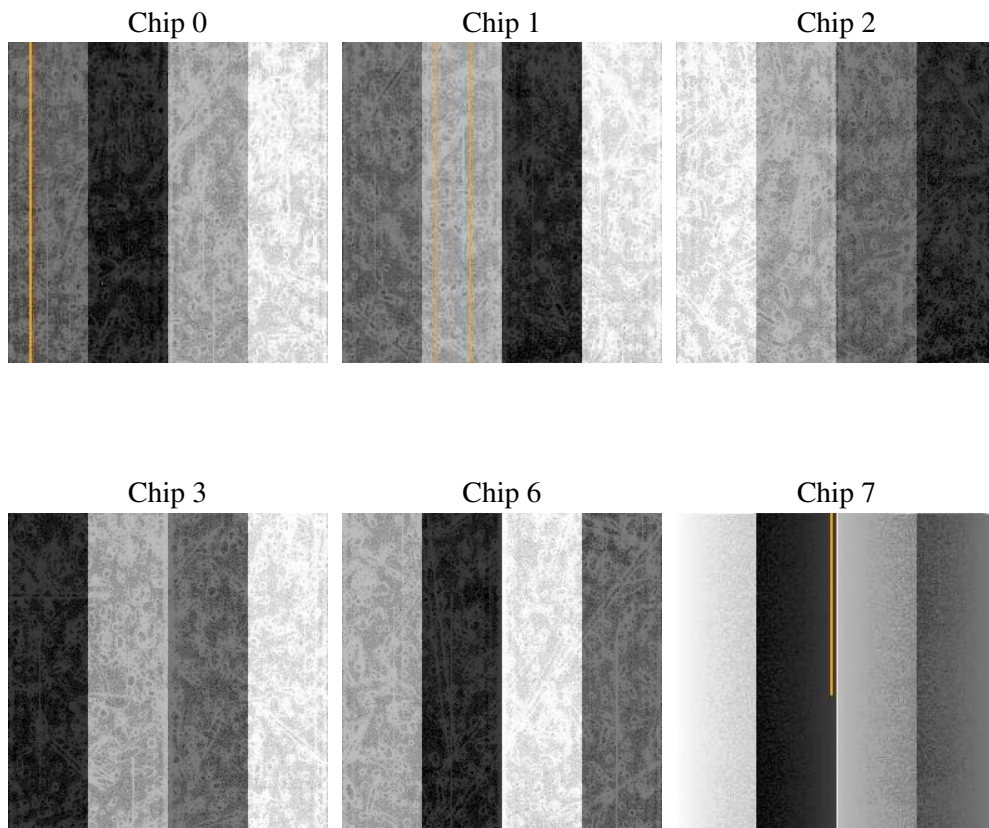
2 OBI

2.1 OBI

2.1.1 Images



2.1.2 Bias



2.1.3 Parameters

obi_num	0
ascdsver	7.6.7.1
caldbver	3.2.1
date	2006-04-05T15:04:10
revision	2

sched_exp_time	0.0
ontime	8280.7727015913
ontime0	8280.7727015913
ontime1	8280.7727015913
ontime2	8280.7727015913
ontime3	8280.7727015913
ontime6	8277.5317113698
ontime7	8280.7727015913
l1events	1459126

2.1.4 Events

	ccd 0	ccd 1	ccd 2	ccd 3	ccd 6	ccd 7
level 1 events	235435	233830	242121	243440	247189	257111
rejected events	58419	56179	63613	64217	62084	63295
rejected %	24%	24%	26%	26%	25%	24%

	ccd 0	ccd 1	ccd 2	ccd 3	ccd 6	ccd 7
grade 0 events	97072	96510	99498	100031	99678	30200
	41%	41%	41%	41%	40%	11%
grade 1 events	583	473	623	657	574	114
	0%	0%	0%	0%	0%	0%
grade 2 events	31035	31796	30087	30652	32206	59890
	13%	13%	12%	12%	13%	23%
grade 3 events	11720	11424	11771	11744	11618	12883
	4%	4%	4%	4%	4%	5%
grade 4 events	11451	11331	11815	11887	11527	12783
	4%	4%	4%	4%	4%	4%
grade 5 events	3547	3658	3348	3907	4007	6967
	1%	1%	1%	1%	1%	2%
grade 6 events	25807	26590	25337	24989	30076	78132
	10%	11%	10%	10%	12%	30%
grade 7 events	54220	52048	59642	59573	57503	56142
	23%	22%	24%	24%	23%	21%

2.2 Compared Parameters

Parameter	Planned	Actual	Parameter	Planned	Actual
Instrument	ACIS	ACIS	Obspar format version number	6	6
Detector	ACIS-012367	ACIS-012367	Obspar file type	PREDICTED	ACTUAL
Grating	NONE	NONE	Obspar update status	NONE	UPDATED
Data mode	FAINT	FAINT	On-chip summing requested	N	N
Observation mode	SECONDARY	SECONDARY	Subarray requested	NONE	NONE
Pointing RA	0	51.96097906857927	Alternating exposures requested	N	N
Pointing Dec	0	42.99817267455747	Primary exposure time	3.2	3.2
Pointing Roll	0.0	150.7944021950275			
SIM focus pos (mm)	-0.782348	-1.428180813131781			
SIM defocus (mm)	0	0.1051558262725154			
SIM translation stage pos (mm)	-233.592463	250.466033080201			
SIM translation stage offset (mm)	0	-0.01005468664627074			
Observation start time	247237797.187041	247237796.16204			
Observation start date	2005-11-01T13:09:57	2005-11-01T13:09:56			
Observation end time	247249560.087583	247249559.06258			
Observation end date	2005-11-01T16:26:00	2005-11-01T16:25:59			
Read mode	TIMED	TIMED			

2.3 Aspect

2.4 Star Slots

2.5 FID Slots

A Summary

A.1 Status

V&V Scientist	Beth Sundheim
V&V Date (YYYY-MM-DD)	2006.04.05
V&V Edition	1
V&V Disposition and Status	OK
V&V Charge Time	8.27839996

A.2 Comments