

V&V Reference Report

L2 ASCDS Version : 7.6.7

Observation 5903 - L2 Version 002
Chandra X-Ray Center

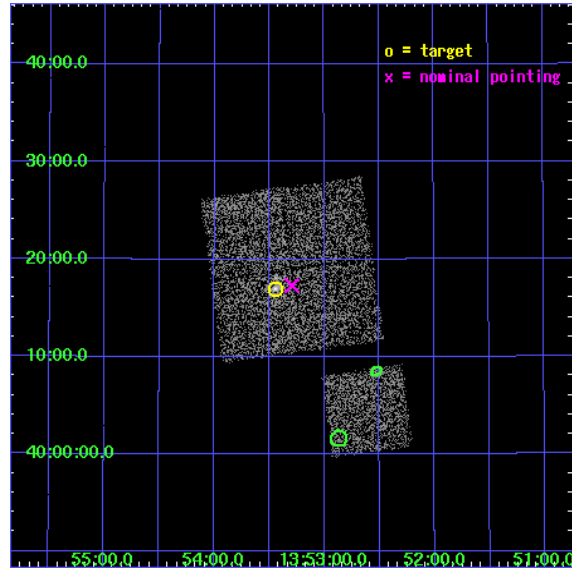
L2 Processing Date: Feb 28 2006

Contents

1	Front	2
2	OBI	3
2.1	OBI	3
2.1.1	Images	3
2.1.2	Bias	3
2.1.3	Parameters	4
2.1.4	Events	4
2.2	Compared Parameters	5
2.3	Aspect	6
2.4	Star Slots	9
2.4.1	Slot 3	9
2.4.2	Slot 4	10
2.4.3	Slot 5	11
2.4.4	Slot 6	12
2.4.5	Slot 7	13
2.5	FID Slots	14
2.5.1	Slot 0	14
2.5.2	Slot 1	15
2.5.3	Slot 2	16
3	Point Sources	17
A	Summary	18
A.1	Status	18
A.2	Comments	18

1 Front

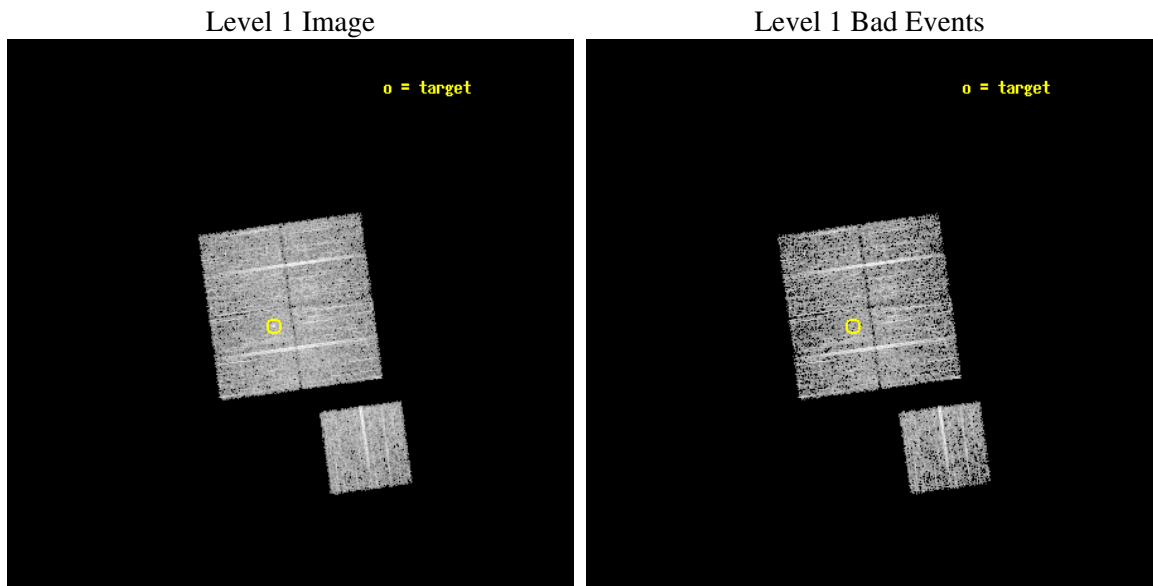
seq_num	600422
obs_id	5903
title	Snapshot Observations of X-ray Bright Early-Type Galaxies
observer	Dr. Steven Murray
object	NGC5353
dtcycle	0
cycle	P
ra_targ	208.36125
dec_targ	40.283056
ra_nom	208.32356265565
dec_nom	40.288861787544
roll_nom	172.23323111899
revision	2
ontime	4550.79999125
livetime	4491.3404391141
ontime0	4550.79999125
ontime1	4547.6590110064
ontime2	4550.79999125
ontime3	4550.79999125
ontime6	4550.785899967
l2events	12824



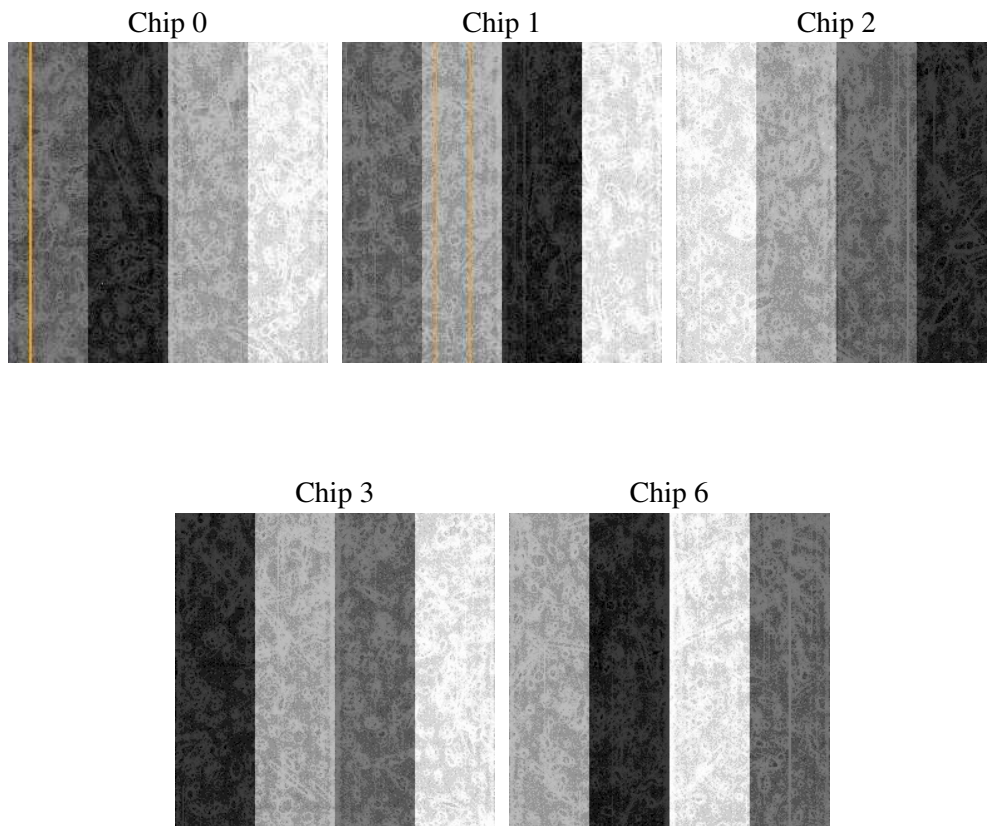
2 OBI

2.1 OBI

2.1.1 Images



2.1.2 Bias



2.1.3 Parameters

obi_num	0
ascdsver	7.6.7
caldsver	3.2.1
date	2006-02-28T17:25:31
revision	2

sched_exp_time	4500.000000
ontime	4554.4670473039
ontime0	4554.4670671821
ontime1	4551.3260670602
ontime2	4554.4670671821
ontime3	4554.4670473039
ontime6	4554.4670671821
l1events	142725

2.1.4 Events

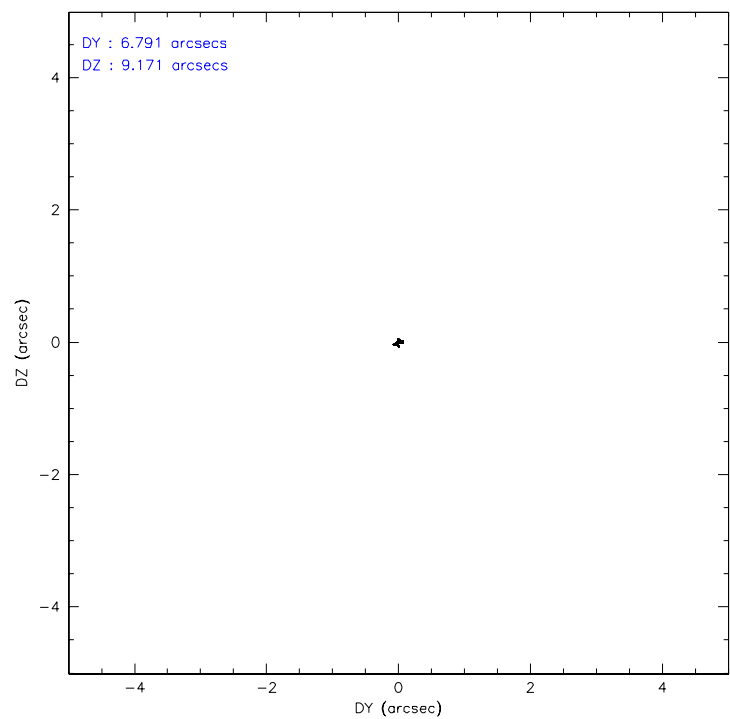
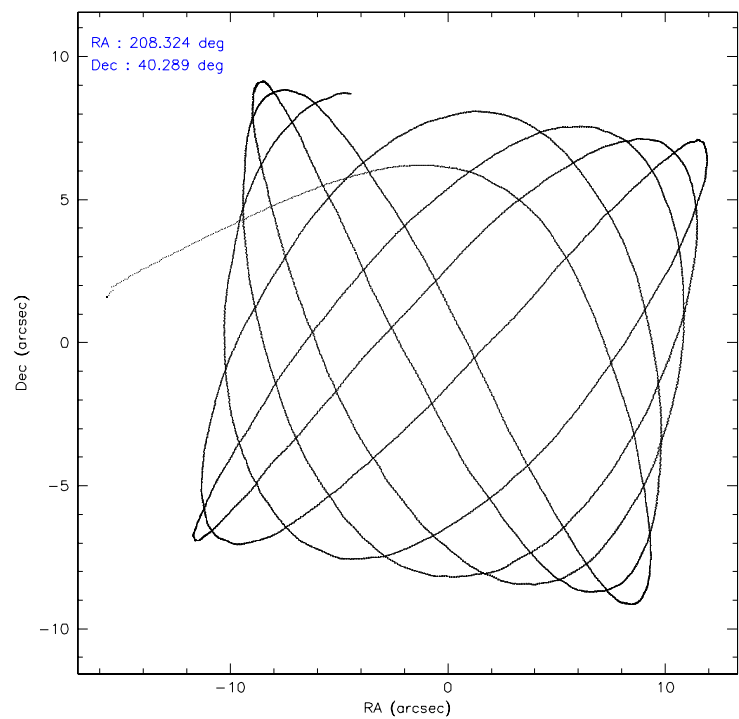
	ccd 0	ccd 1	ccd 2	ccd 3	ccd 6
level 1 events	27483	27786	30234	28663	28559
rejected events	24597	24423	27281	25524	25538
rejected %	89%	87%	90%	89%	89%

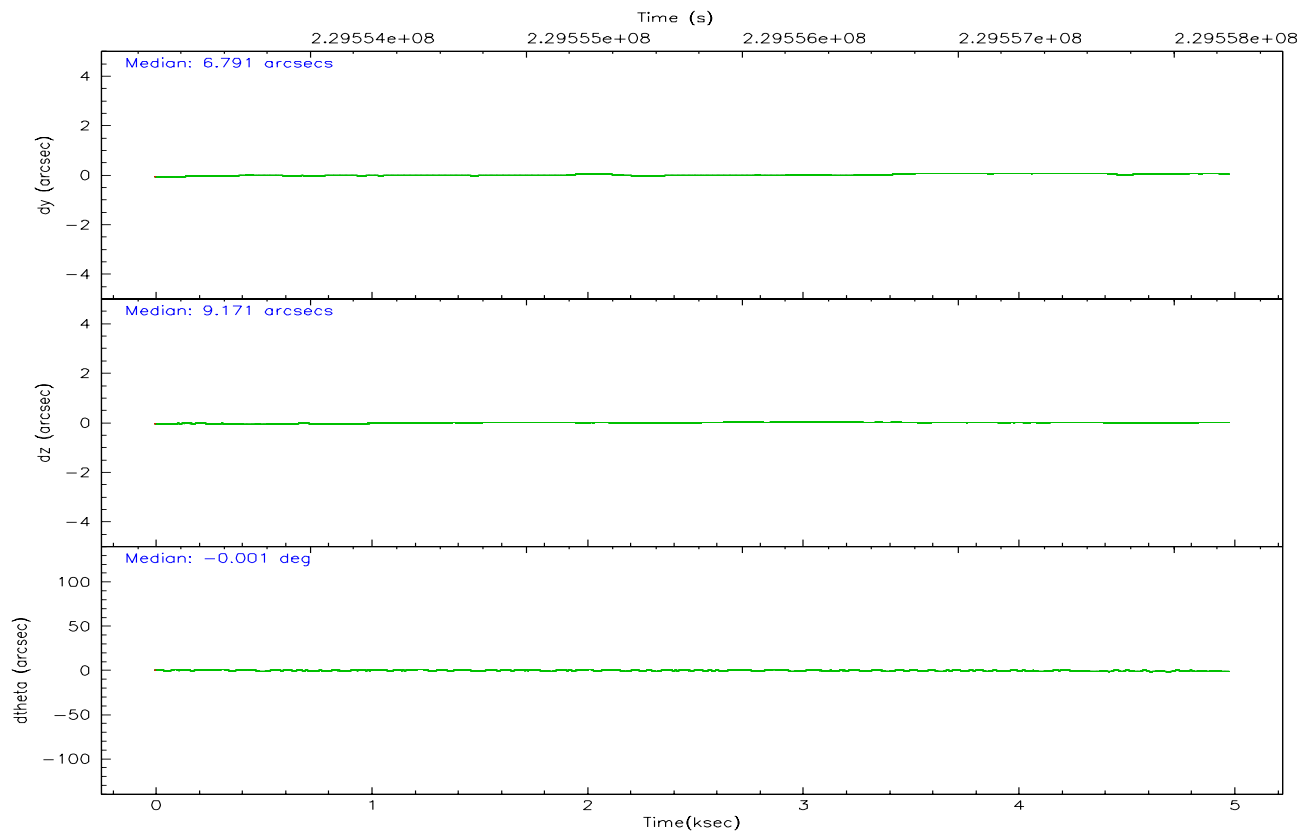
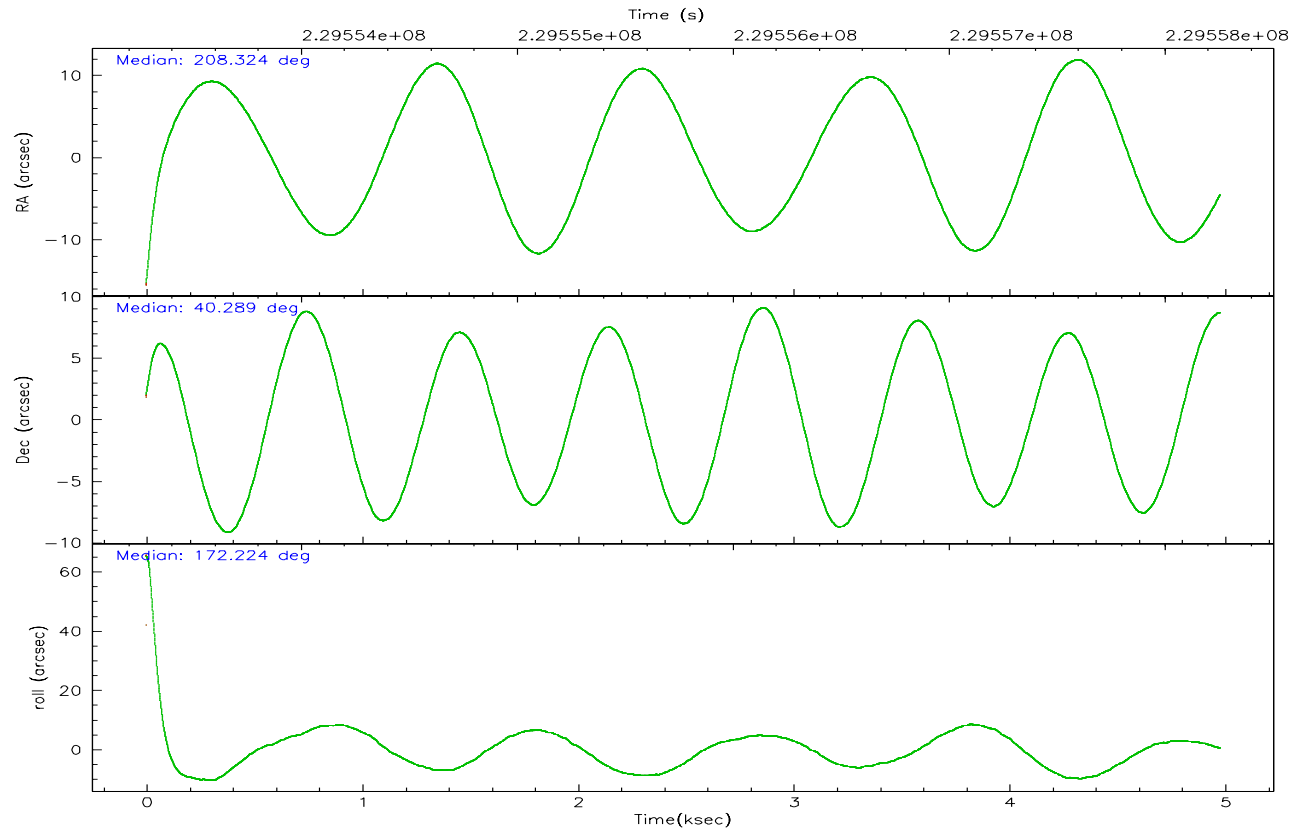
	ccd 0	ccd 1	ccd 2	ccd 3	ccd 6
grade 0 events	1018	1334	1099	1338	1045
	3%	4%	3%	4%	3%
grade 1 events	17	12	19	24	7
	0%	0%	0%	0%	0%
grade 2 events	653	675	656	584	643
	2%	2%	2%	2%	2%
grade 3 events	327	366	307	334	348
	1%	1%	1%	1%	1%
grade 4 events	307	367	335	323	332
	1%	1%	1%	1%	1%
grade 5 events	1024	1128	963	1154	1150
	3%	4%	3%	4%	4%
grade 6 events	585	630	558	563	653
	2%	2%	1%	1%	2%
grade 7 events	23552	23274	26297	24343	24381
	85%	83%	86%	84%	85%

2.2 Compared Parameters

Parameter	Planned	Actual	Parameter	Planned	Actual
Instrument	ACIS	ACIS	Obspar format version number	6	6
Detector	ACIS-01236	ACIS-01236	Obspar file type	PREDICTED	ACTUAL
Grating	NONE	NONE	Obspar update status	NONE	UPDATED
Data mode	VFAINT	VFAINT	On-chip summing requested	N	N
Observation mode	POINTING	POINTING	Subarray requested	NONE	NONE
Pointing RA	208.356757	208.3235626556531	Alternating exposures requested	N	N
Pointing Dec	40.299350	40.28886178754398	Primary exposure time	0.000000	3.1
Pointing Roll	172.002898	172.2332311189894			
SIM focus pos (mm)	-0.782348	-0.7809083437167272			
SIM defocus (mm)	0	0.001439871863259334			
SIM translation stage pos (mm)	-230.592463	-230.5903706213692			
SIM translation stage offset (mm)	-3	-3.002082381560513			
Observation start time	229553755.184000	229552677.00248			
Observation start date	2005-04-10T20:54:51	2005-04-10T20:37:57			
Observation end time	229558255.184000	229559545.0153			
Observation end date	2005-04-10T22:09:51	2005-04-10T22:32:25			
Read mode	TIMED	TIMED			

2.3 Aspect



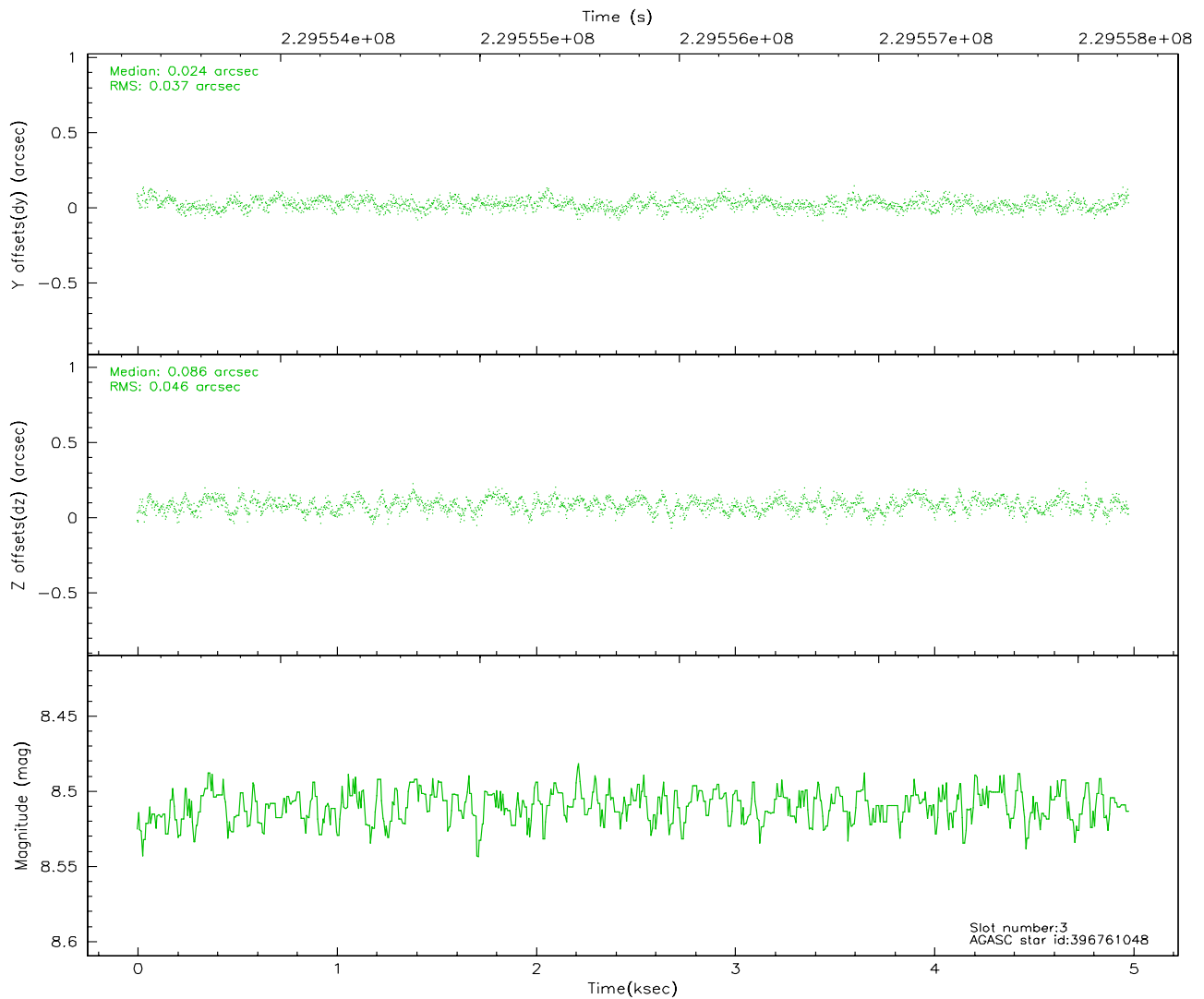
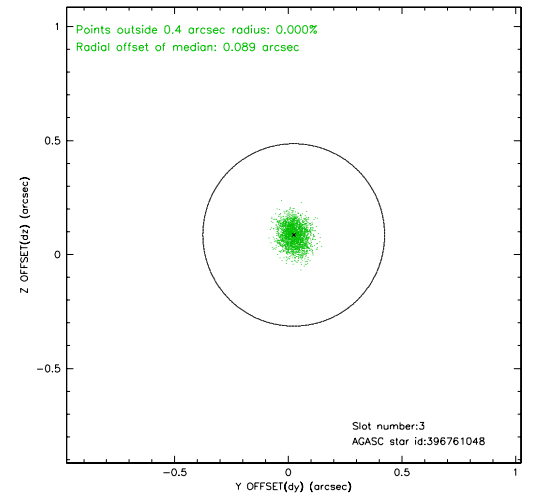
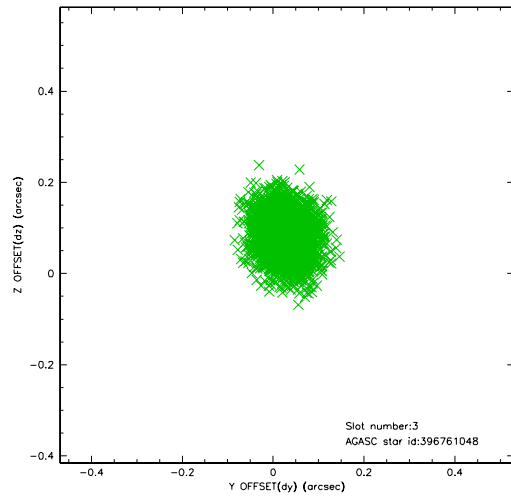


Slot Statistics

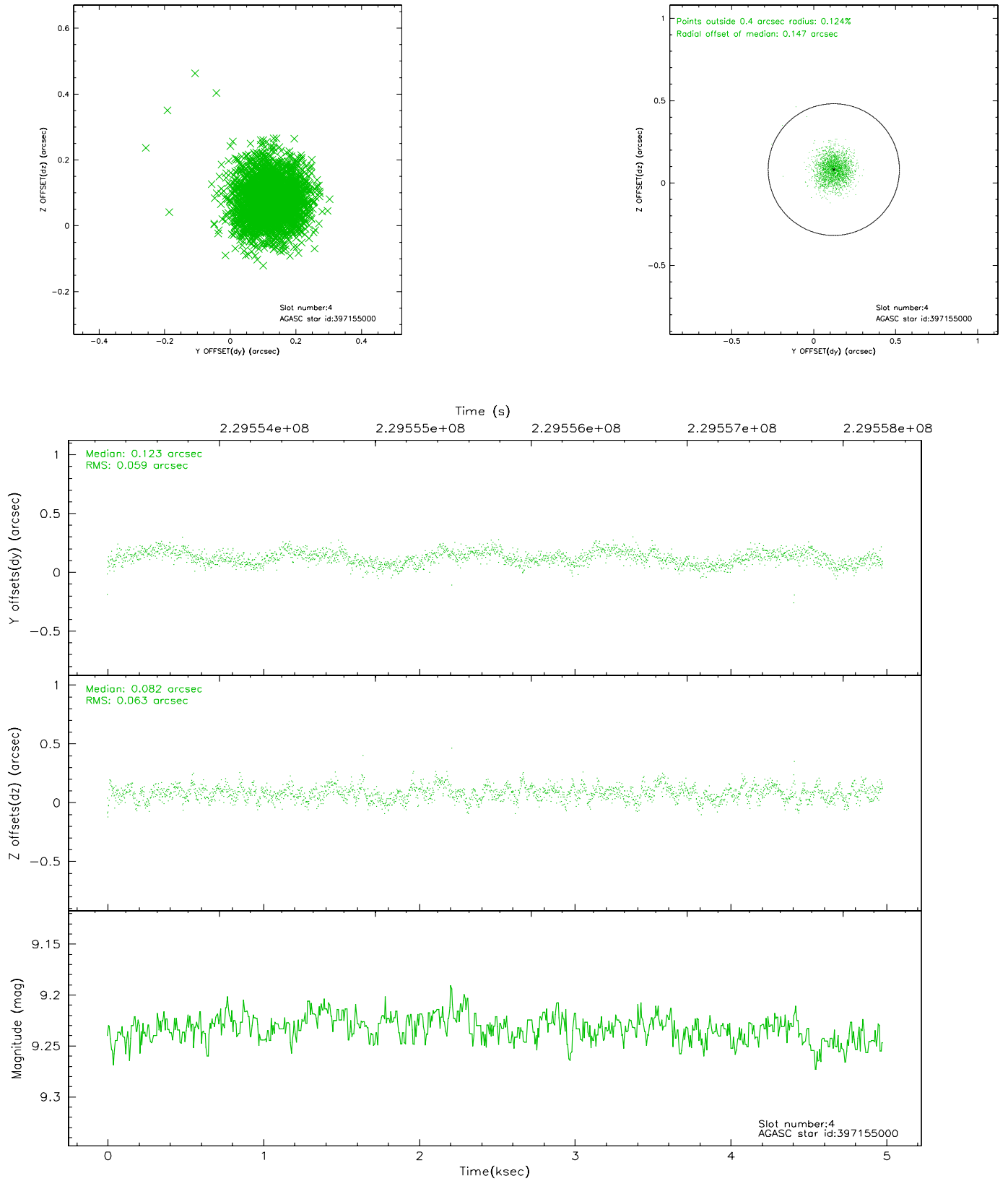
slot	status	id	mag	n_pts	med_dy	med_dz	dr1	dr2	ra	dec	mean_y	mean_z
0	FID	ACIS-I-1	7.24	1215	0.058	-0.015	0.006	0.010	0.000000	0.000000	932.87	-894.22
1	FID	ACIS-I-5	7.24	1215	-0.170	0.076	0.006	0.009	0.000000	0.000000	-1814.75	1002.76
2	FID	ACIS-I-6	7.26	1214	0.021	0.010	0.007	0.011	0.000000	0.000000	397.10	1648.54
3	GUIDE	396761048	8.51	2429	0.024	0.086	0.063	0.100	208.356917	39.848251	-226.43	1608.27
4	GUIDE	397155000	9.23	2428	0.123	0.082	0.091	0.144	208.578535	40.761769	-366.05	-1732.38
5	GUIDE	397156112	8.15	2428	-0.000	0.048	0.055	0.089	208.309778	40.715583	335.78	-1466.66
6	GUIDE	397157096	8.66	2429	0.001	0.138	0.065	0.103	208.961272	40.488605	-1543.02	-911.19
7	GUIDE	396762336	5.81	2425	-0.149	-0.355	0.051	0.082	207.946236	39.669422	810.41	2400.95

2.4 Star Slots

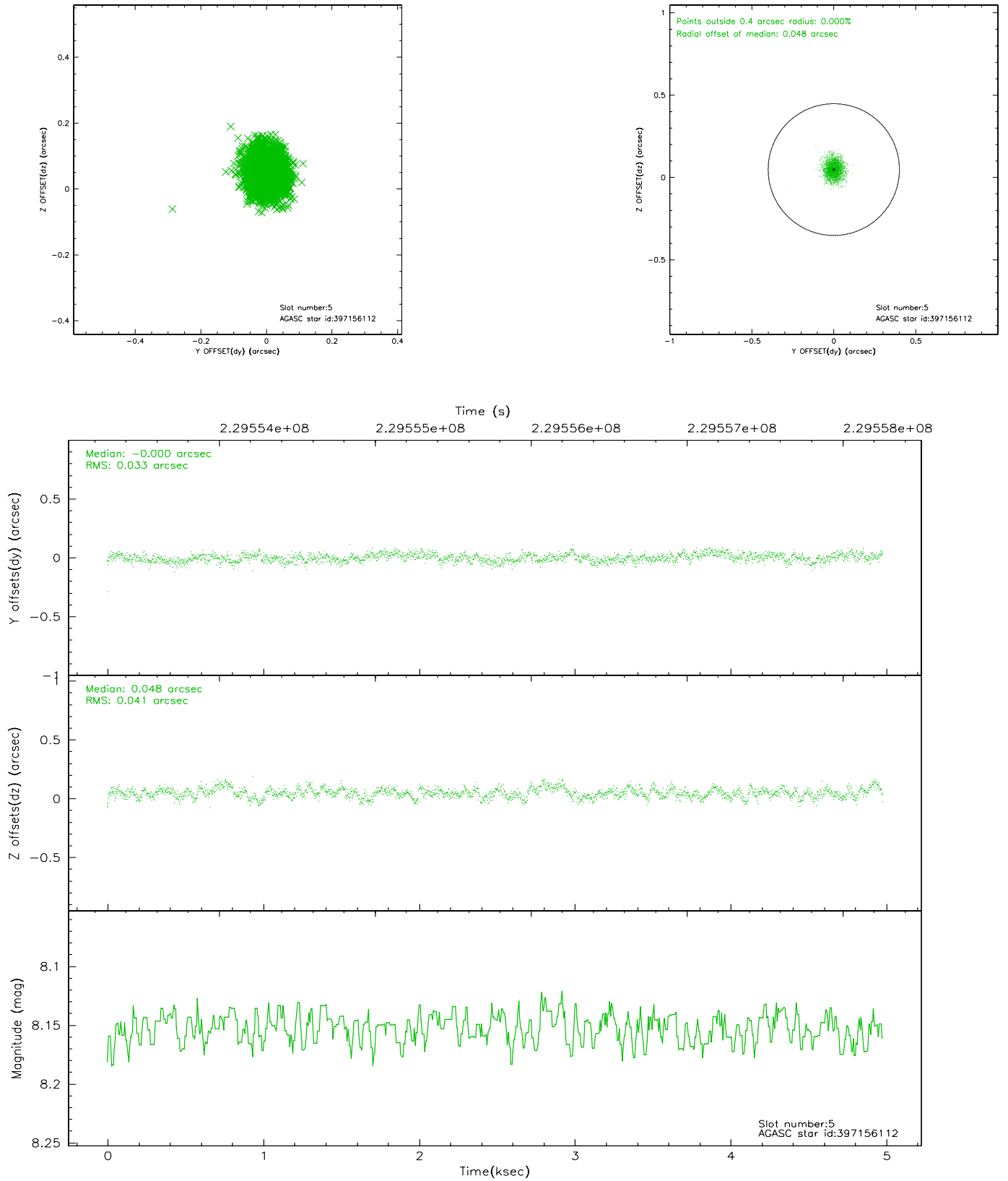
2.4.1 Slot 3



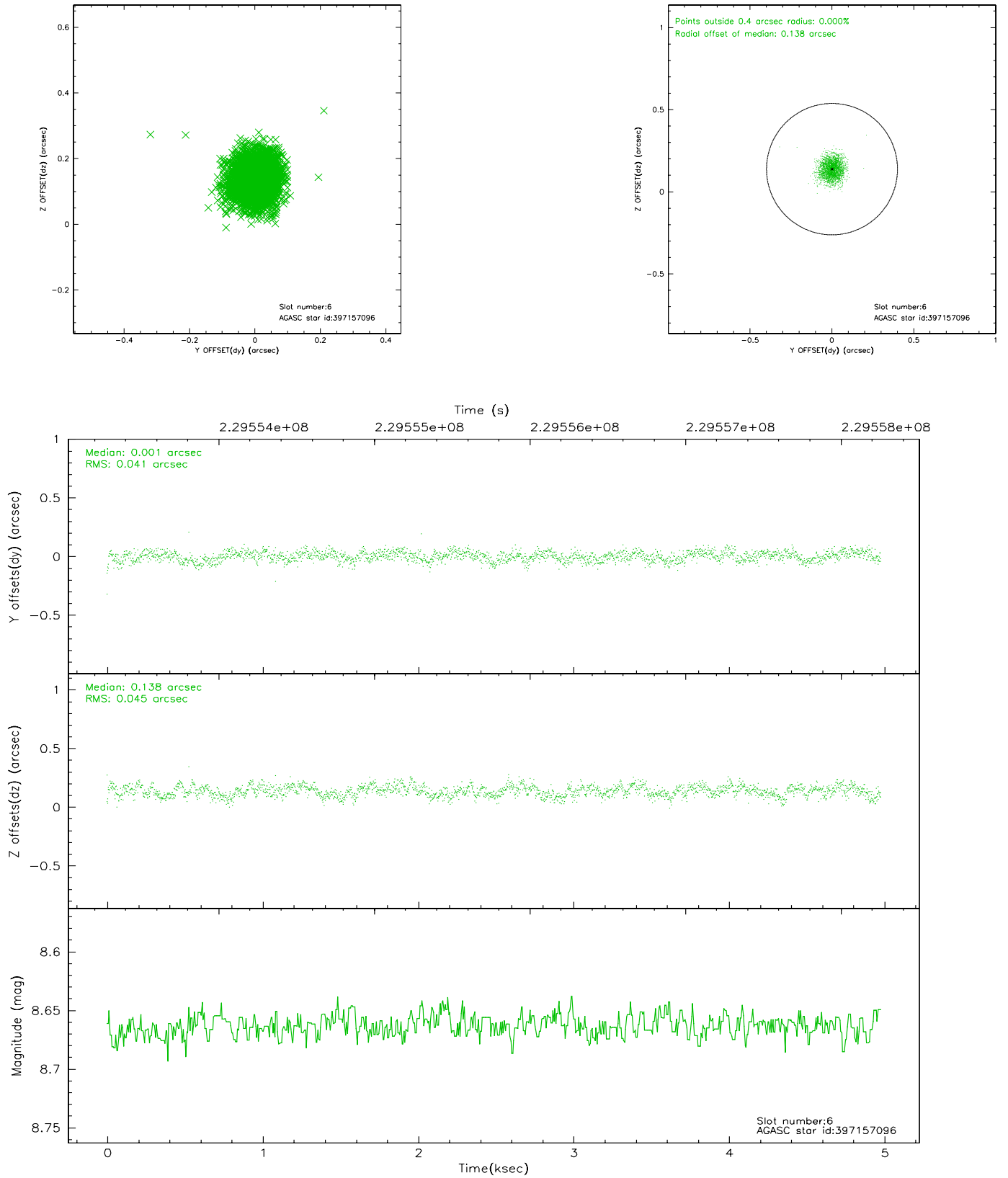
2.4.2 Slot 4



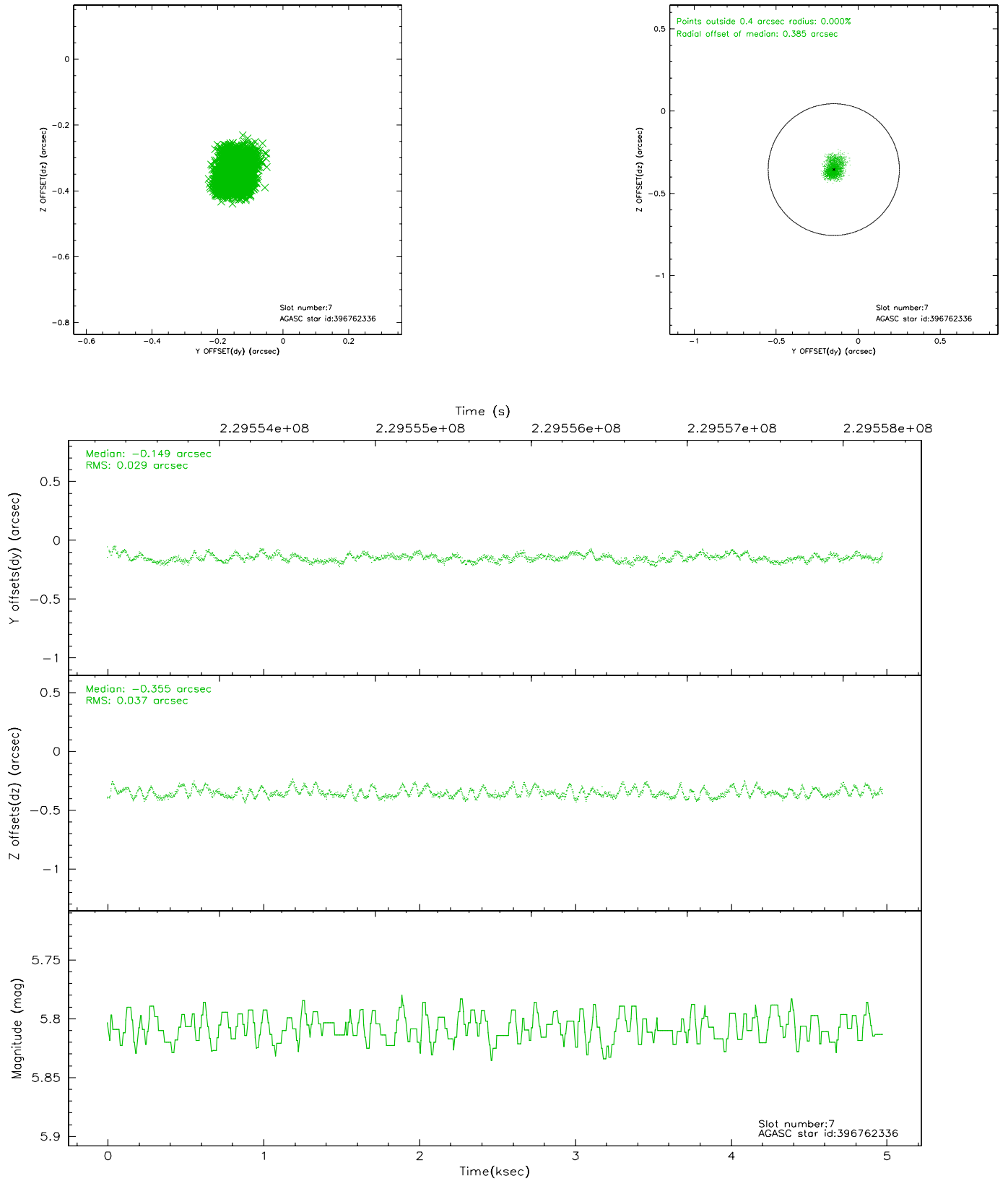
2.4.3 Slot 5



2.4.4 Slot 6

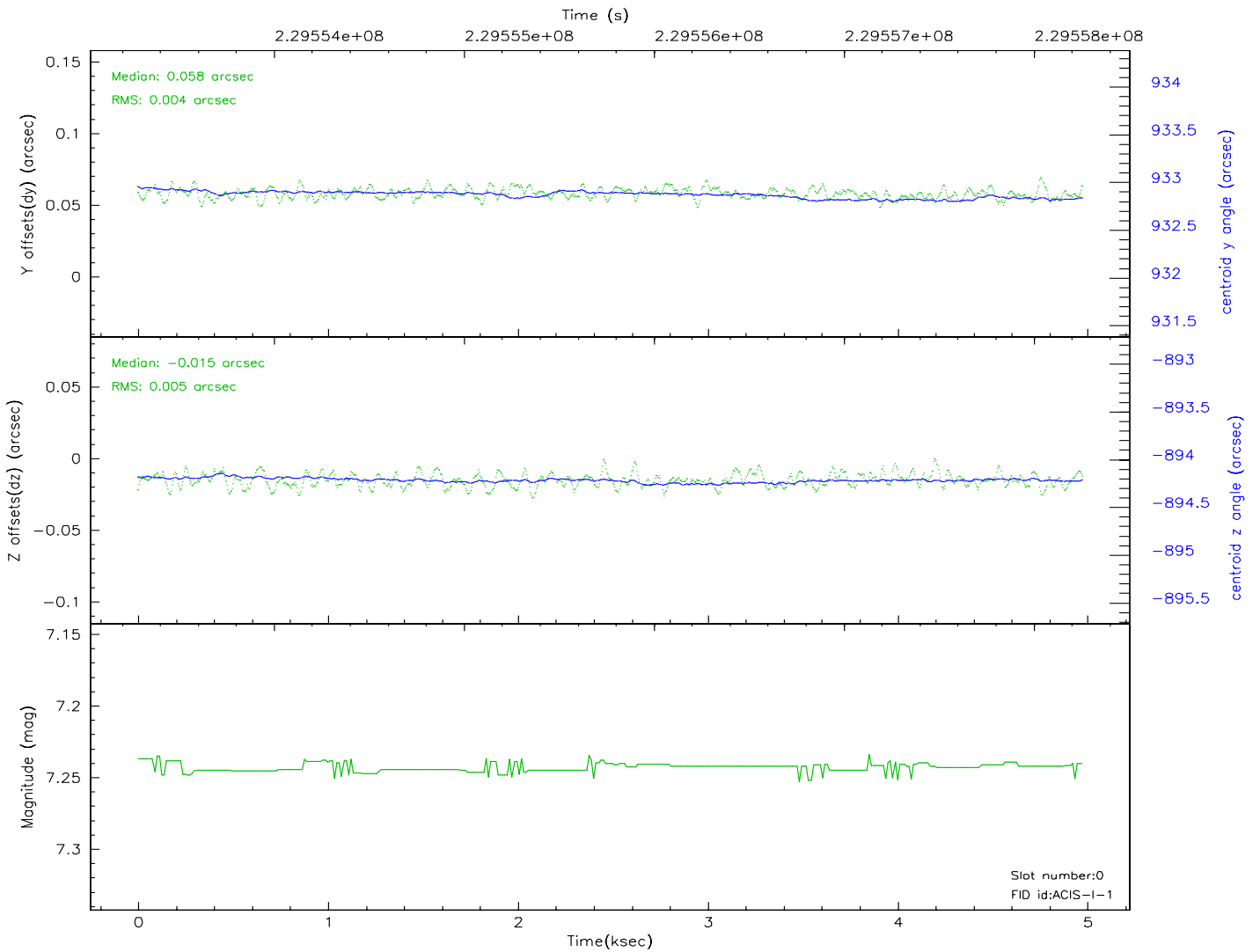
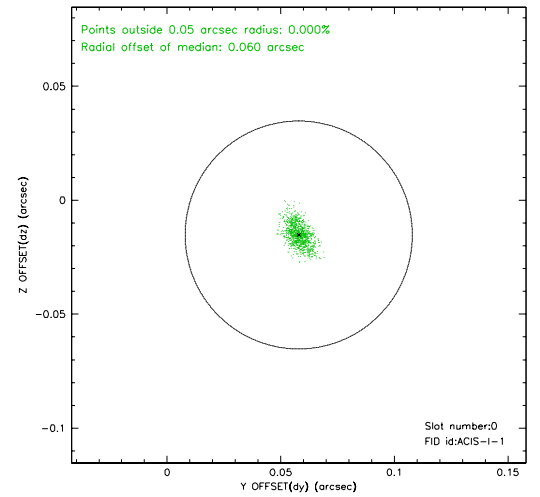
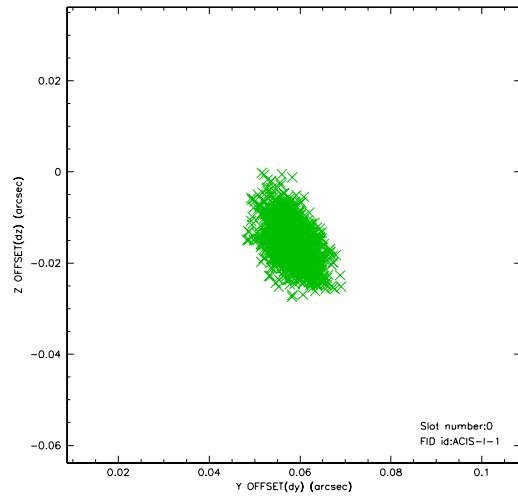


2.4.5 Slot 7

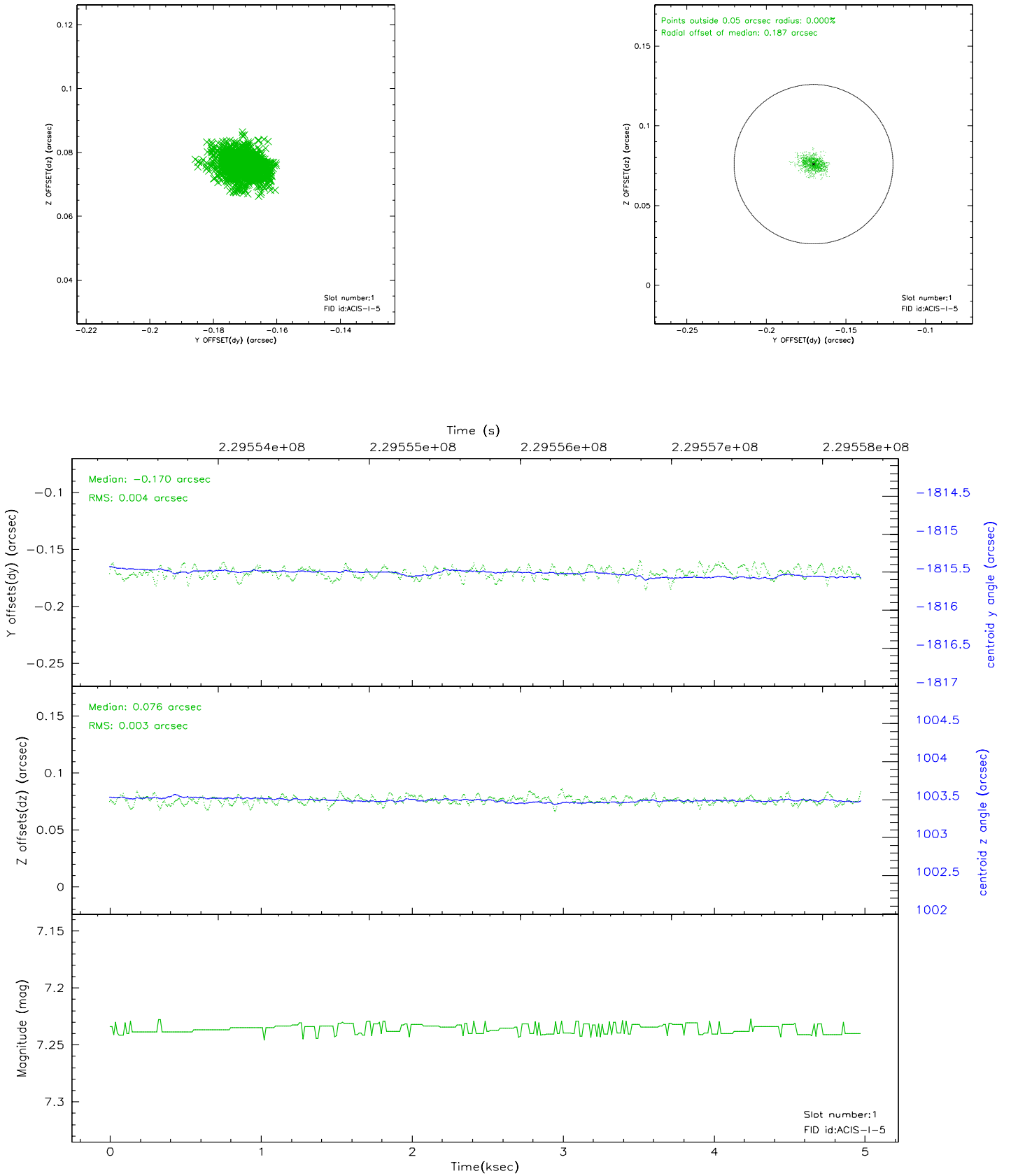


2.5 FID Slots

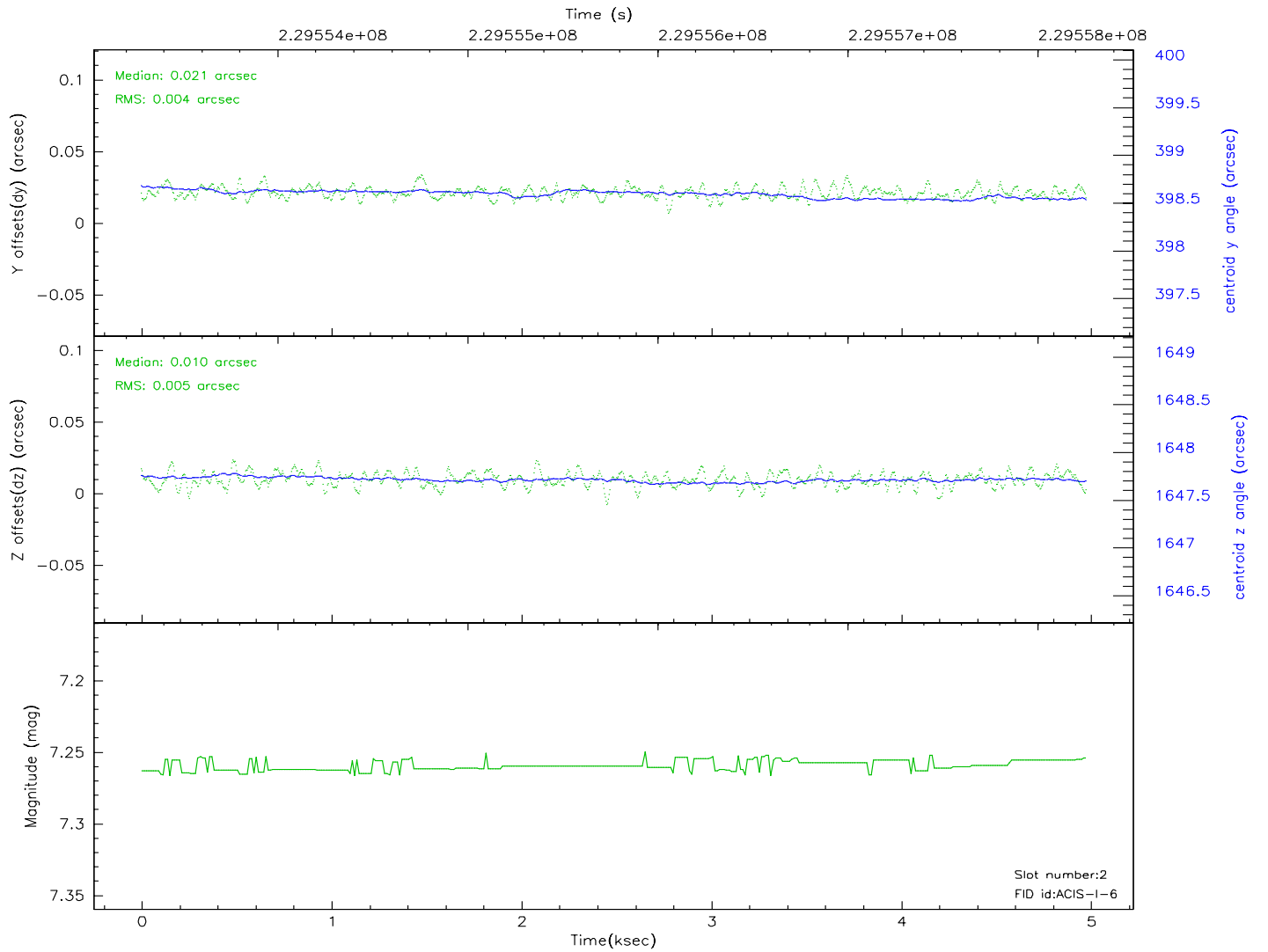
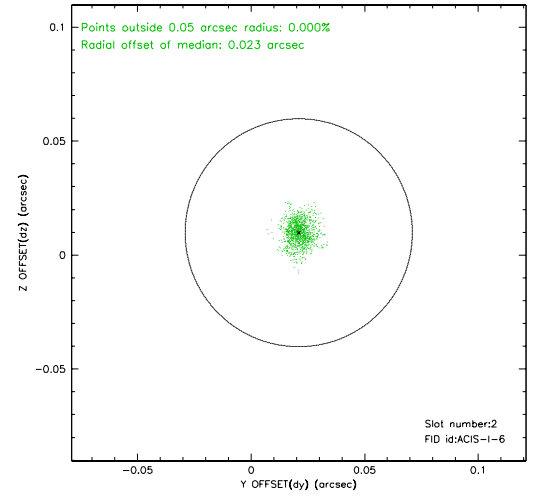
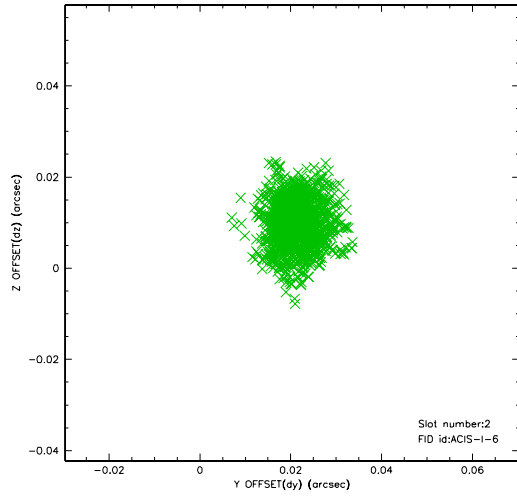
2.5.1 Slot 0



2.5.2 Slot 1



2.5.3 Slot 2



3 Point Sources

A Summary

A.1 Status

V&V Scientist	Jen Lauer
V&V Date (YYYY-MM-DD)	2006.02.28
V&V Edition	1
V&V Disposition and Status	OK
V&V Charge Time	4.550799

A.2 Comments