

V&V Reference Report

L2 ASCDS Version : 8.4.3

Observation 5873 - L2 Version 2
Chandra X-Ray Center

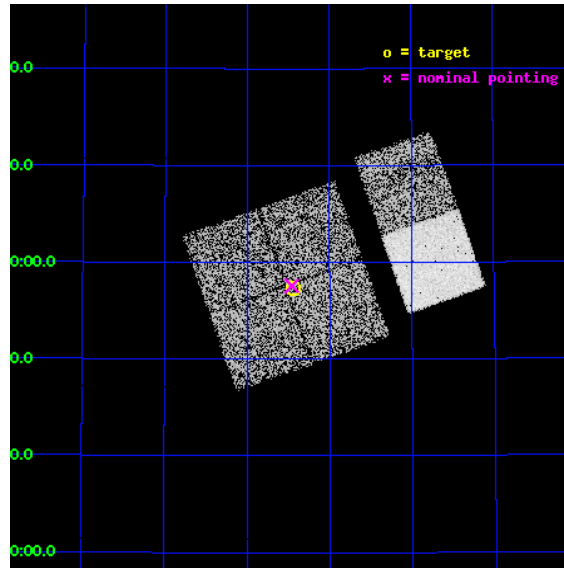
L2 Processing Date : Mar 24 2012

Contents

1	Front	2
2	OBI	3
2.1	OBI	3
2.1.1	Images	3
2.1.2	Bias	3
2.1.3	Parameters	4
2.1.4	Events	4
2.2	Compared Parameters	5
2.3	Aspect	6
2.4	Star Slots	9
2.4.1	Slot 3	9
2.4.2	Slot 4	10
2.4.3	Slot 5	11
2.4.4	Slot 6	12
2.4.5	Slot 7	13
2.5	FID Slots	14
2.5.1	Slot 0	14
2.5.2	Slot 1	15
2.5.3	Slot 2	16
A	Summary	17
A.1	Status	17
A.2	Comments	17

1 Front

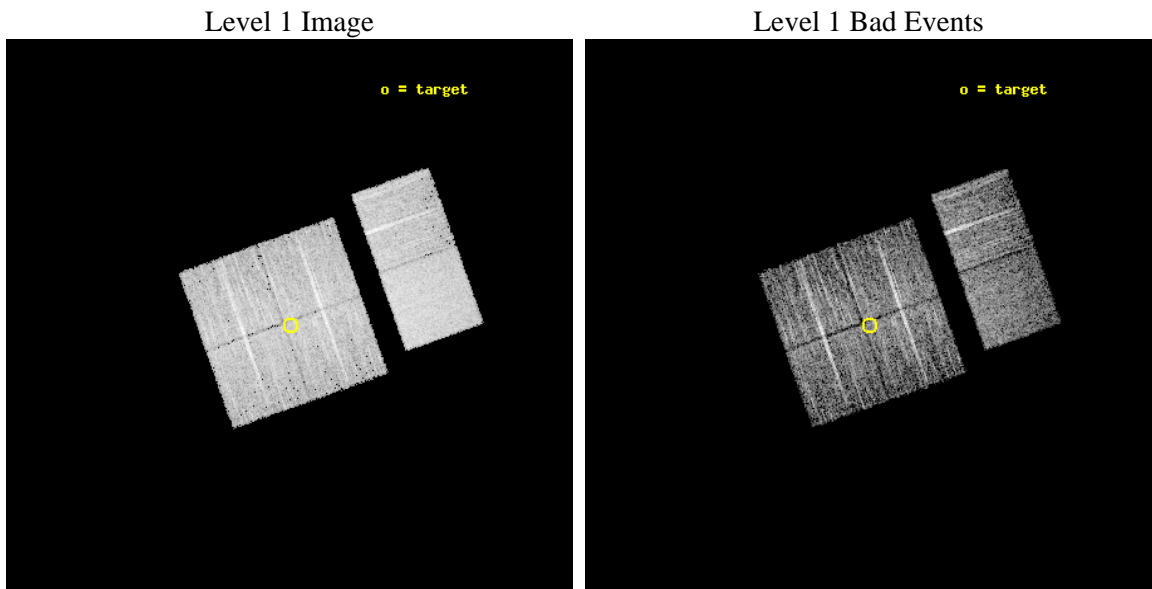
seq_num	900373	Sequence number
obs_id	5873	Observation id
title	The Spectral Energy Distributions of AGN: A Shallow Survey of the ELAIS-N1 Field	Proposal title
observer	Prof Kirpal Nandra	Principal investigator
object	N1_19	Source name
dtcycle	0	
cycle	P	events from which exps? Prim/Second/Both
ra_targ	242.609167	Observer's specified target RA [deg]
dec_targ	54.956194	Observer's specified target Dec [deg]
ra_nom	242.61454110063	Nominal RA [deg]
dec_nom	54.95962427813	Nominal Dec [deg]
roll_nom	70.481039469397	Nominal Roll [deg]
revision	2	Processing version of data
ontime	4751.9999822974	Sum of GTIs [s]
livetime	4691.8272972107	Livetime [s]
ontime0	4751.9999822974	Sum of GTIs [s]
ontime1	4751.9999822974	Sum of GTIs [s]
ontime2	4751.9999822974	Sum of GTIs [s]
ontime3	4751.9999822974	Sum of GTIs [s]
ontime6	4751.9999822974	Sum of GTIs [s]
ontime7	4751.9999822974	Sum of GTIs [s]
l2events	42173	Number of level 2 events



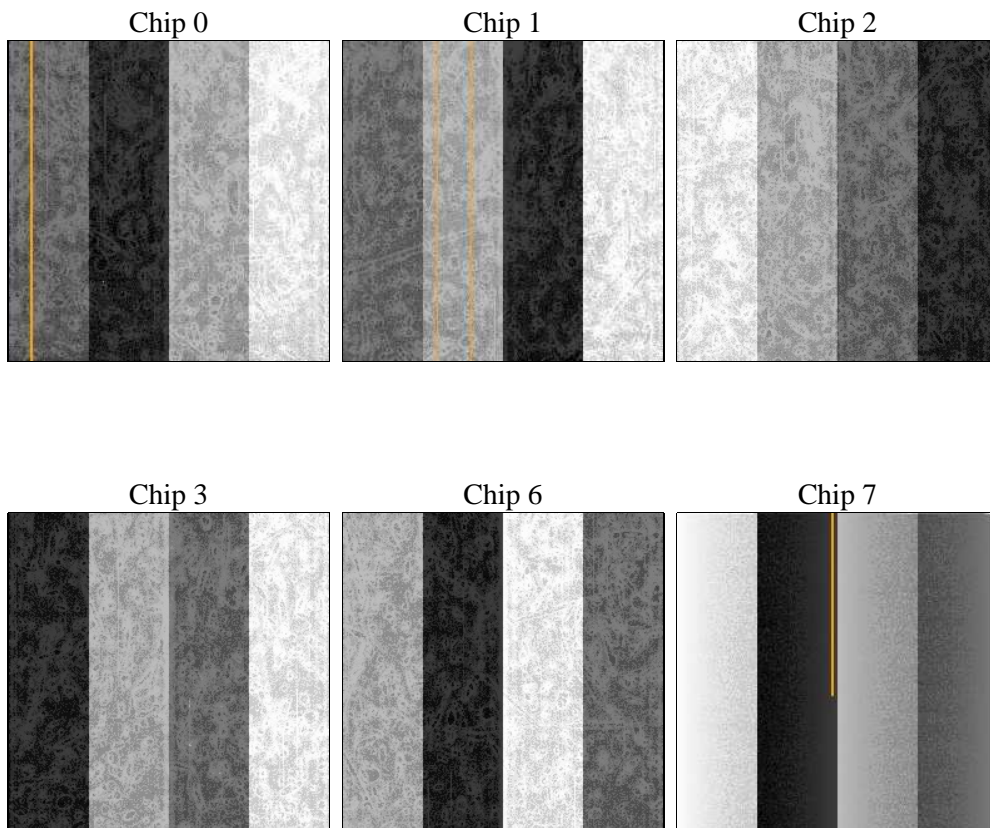
2 OBI

2.1 OBI

2.1.1 Images



2.1.2 Bias



2.1.3 Parameters

obi_num	0	Obi number	sched_exp_time	5000.000000	[s] Scheduled observation exposure time
ascdsver	8.4.3	Processing system revision	ontime	4751.9999822974	Sum of GTIs [s]
caldsver	4.4.8	 	ontime0	4751.9999822974	Sum of GTIs [s]
date	2012-03-25T00:11:54	Date and time of file creation	ontime1	4751.9999822974	Sum of GTIs [s]
revision	2	Processing version of data	ontime2	4751.9999822974	Sum of GTIs [s]
			ontime3	4751.9999822974	Sum of GTIs [s]
			ontime6	4751.9999822974	Sum of GTIs [s]
			ontime7	4751.9999822974	Sum of GTIs [s]
			l1events	247537	Number of level 1 events

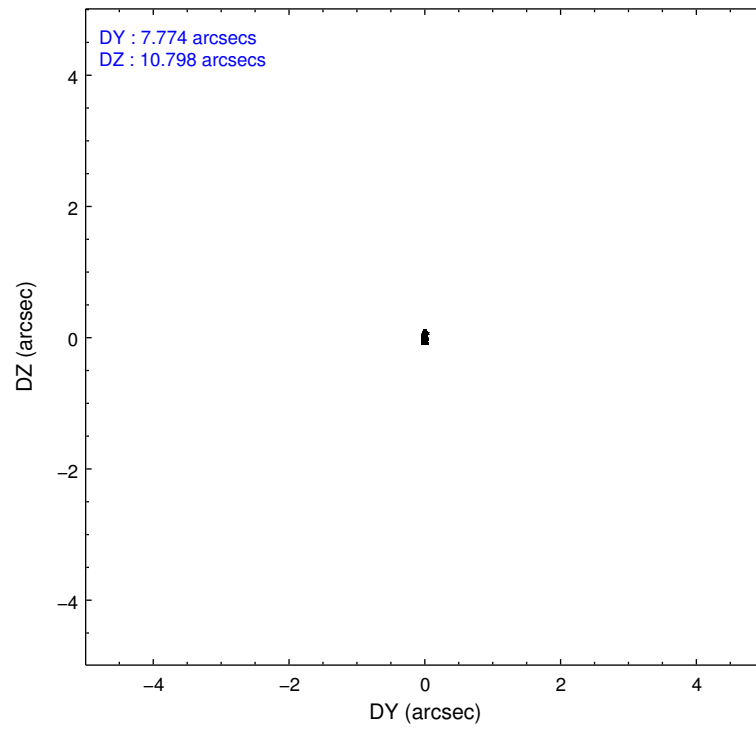
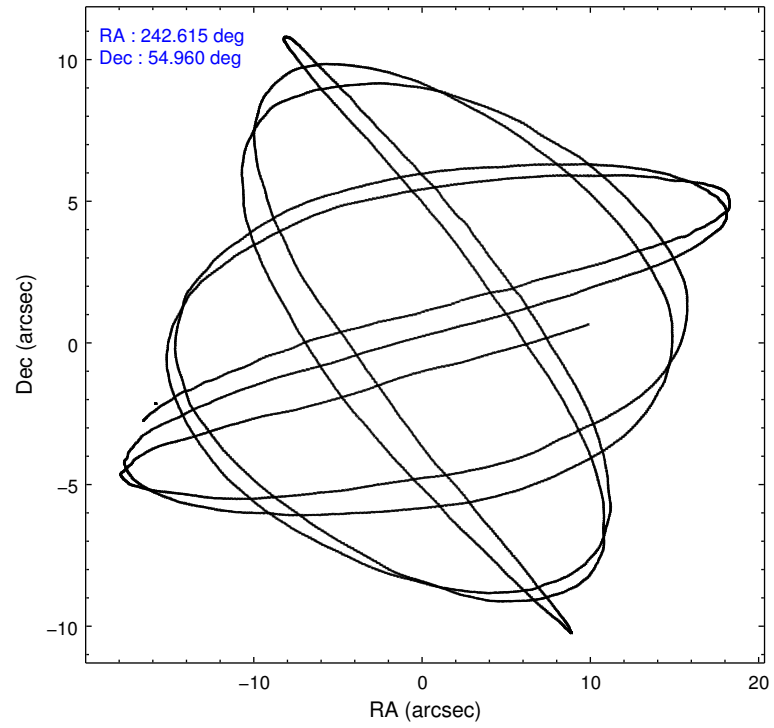
2.1.4 Events

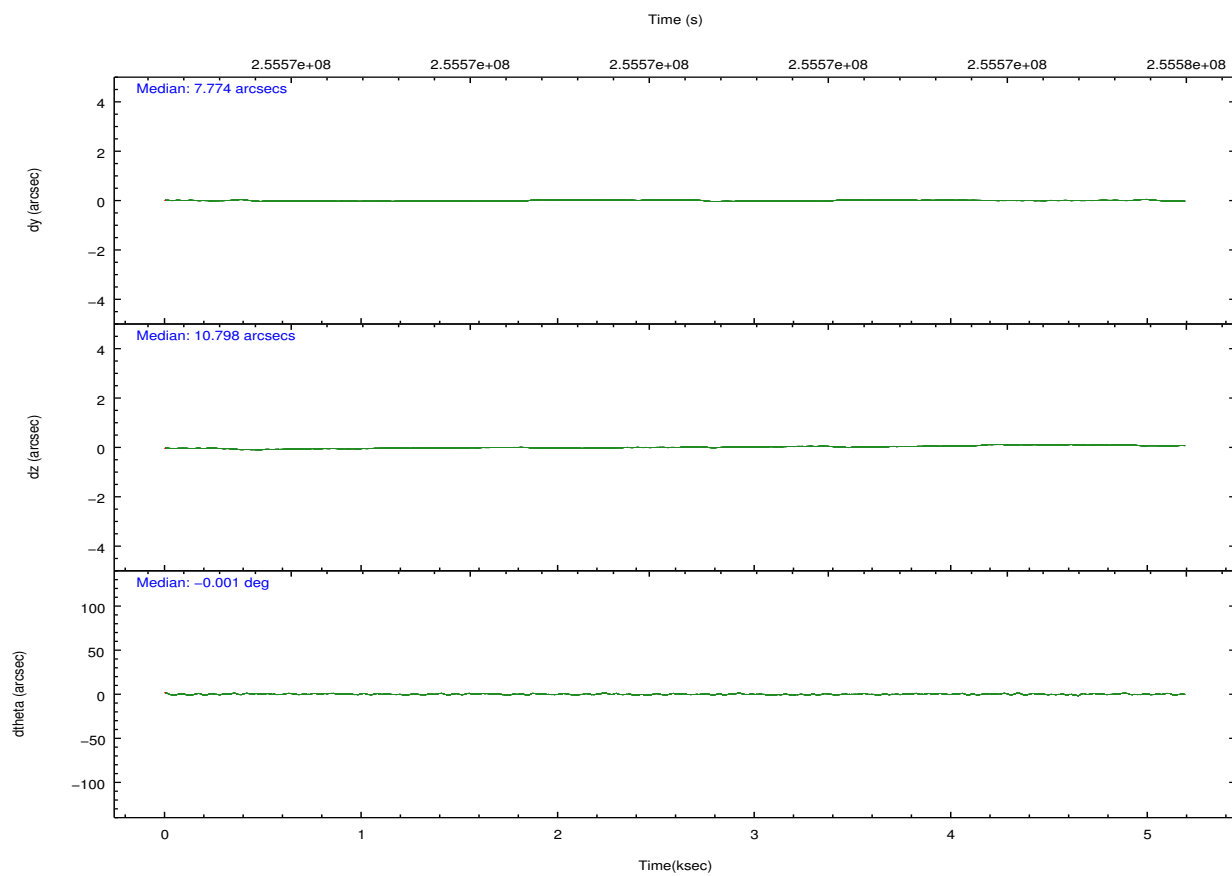
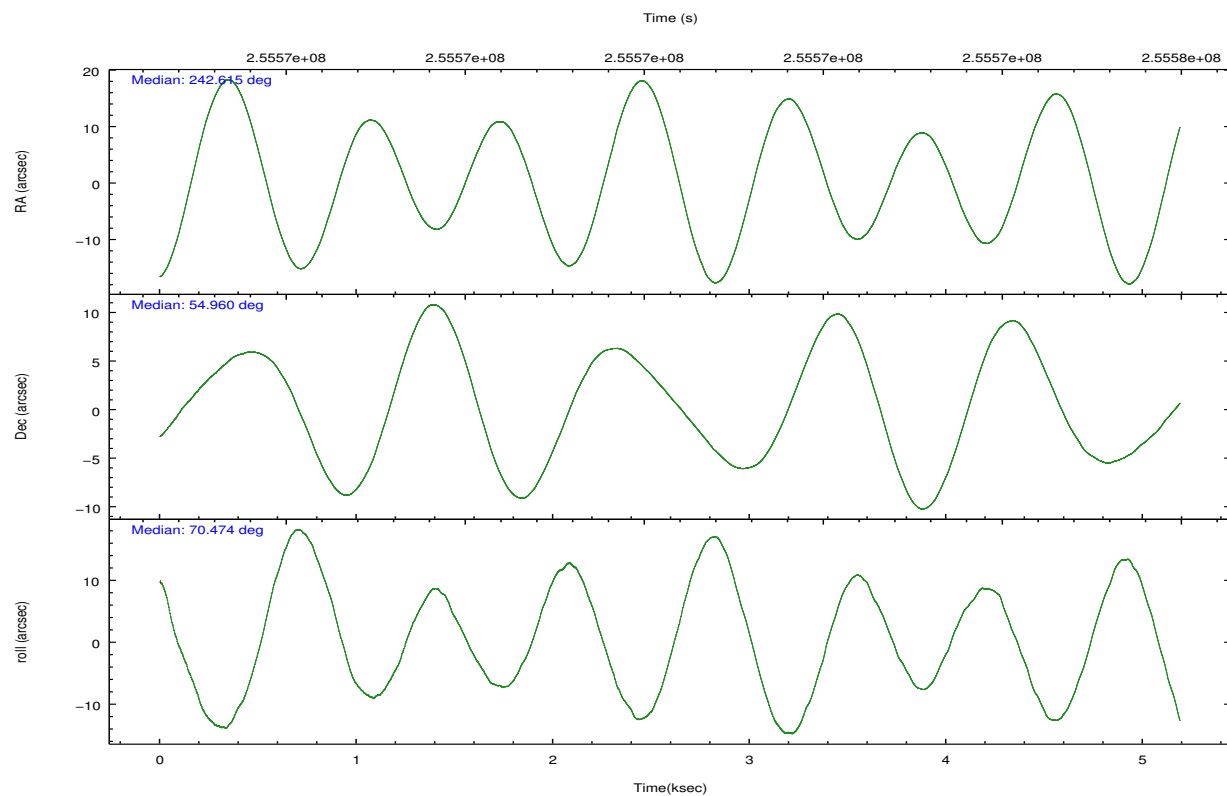
	ccd 0	ccd 1	ccd 2	ccd 3	ccd 6	ccd 7		ccd 0	ccd 1	ccd 2	ccd 3	ccd 6	ccd 7
level 1 events	39409	35681	39253	37280	41618	54296	grade 0 events	1921	1920	2078	2048	1833	2010
rejected events	34752	30786	34589	32670	36860	31799		4%	5%	5%	5%	4%	3%
rejected %	88%	86%	88%	87%	88%	58%	grade 1 events	21	15	17	19	24	67
								0%	0%	0%	0%	0%	0%
							grade 2 events	1041	1085	954	879	1057	4579
								2%	3%	2%	2%	2%	8%
							grade 3 events	468	492	446	395	452	2031
								1%	1%	1%	1%	1%	3%
							grade 4 events	417	460	428	449	449	1971
								1%	1%	1%	1%	1%	3%
							grade 5 events	1545	1753	1584	1768	1922	5073
								3%	4%	4%	4%	4%	9%
							grade 6 events	816	949	765	848	975	11937
								2%	2%	1%	2%	2%	21%
							grade 7 events	33180	29007	32981	30874	34906	26628
								84%	81%	84%	82%	83%	49%

2.2 Compared Parameters

Parameter	Planned	Actual	Parameter	Planned	Actual
Instrument	ACIS	ACIS	Obspar format version number	7	7
Detector	ACIS-012367	ACIS-012367	Obspar file type	PREDICTED	ACTUAL
Grating	NONE	NONE	Obspar update status	NONE	UPDATED
Data mode	VFAINT	VFAINT	Number of optional ACIS chips dropped	0	0
Observation mode	POINTING	POINTING	On-chip summing requested	N	N
[deg] Pointing RA	242.623482	242.6145411006328	Subarray requested	NONE	NONE
[deg] Pointing Dec	54.932699	54.95962427813039	Alternating exposures requested	N	N
[deg] Pointing Roll	70.265029	70.48103946939707	[s] Primary exposure time	0.000000	3.2
[mm] SIM focus pos	-0.782348	-0.7809083437167272			
[mm] SIM defocus	0	0.001439871863259334			
[mm] SIM translation stage pos	-233.592463	-233.5874344608287			
[mm] SIM translation stage offset	0	-0.005018542100998502			
[s] Observation start time (MET)	255569745.184000	255569369.13505			
Observation start date	2006-02-05T23:34:40	2006-02-05T23:29:29			
[s] Observation end time (MET)	255574745.184000	255574879.02281			
Observation end date	2006-02-06T00:58:00	2006-02-06T01:01:19			
Read mode	TIMED	TIMED			

2.3 Aspect



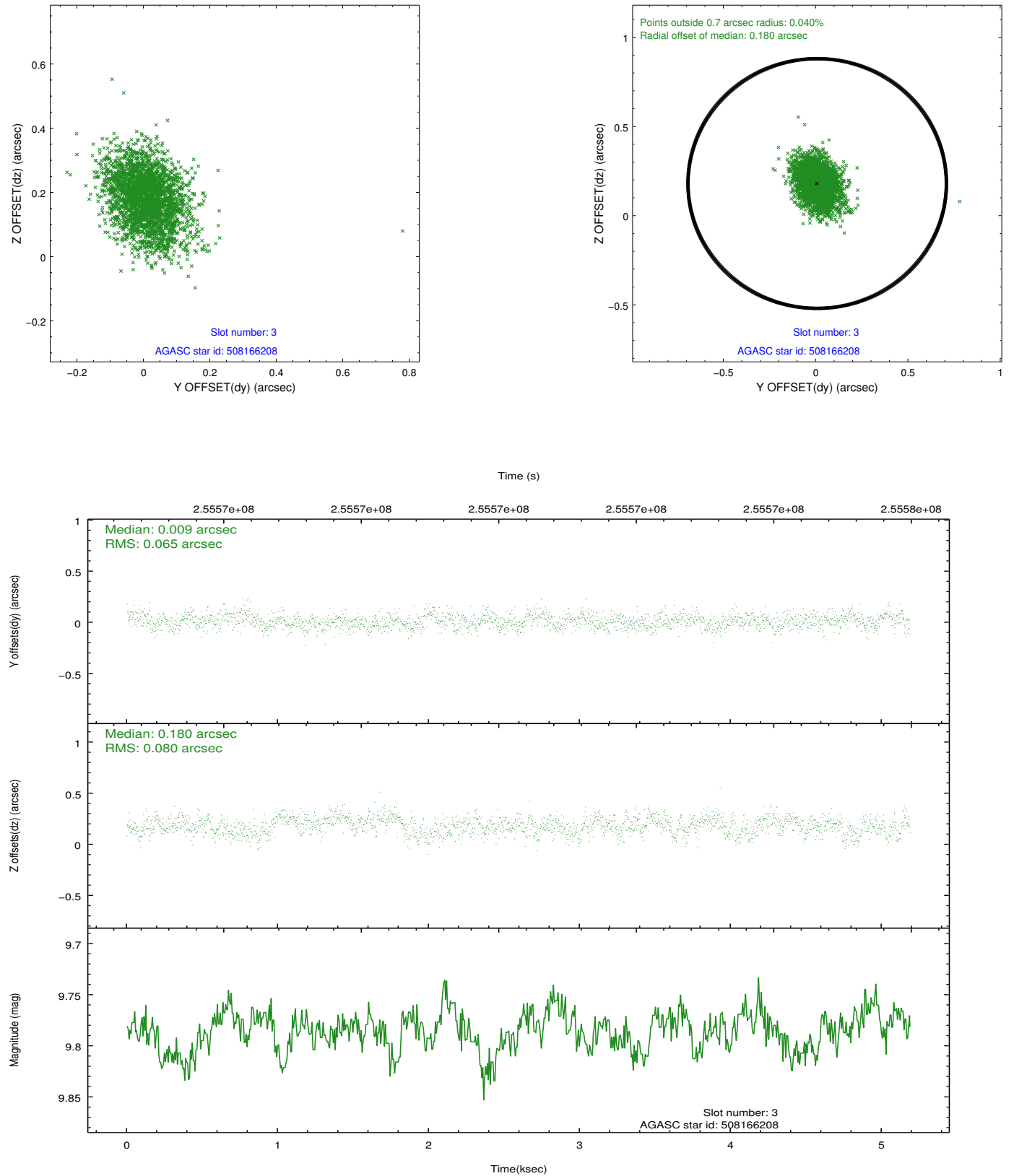


Slot Statistics

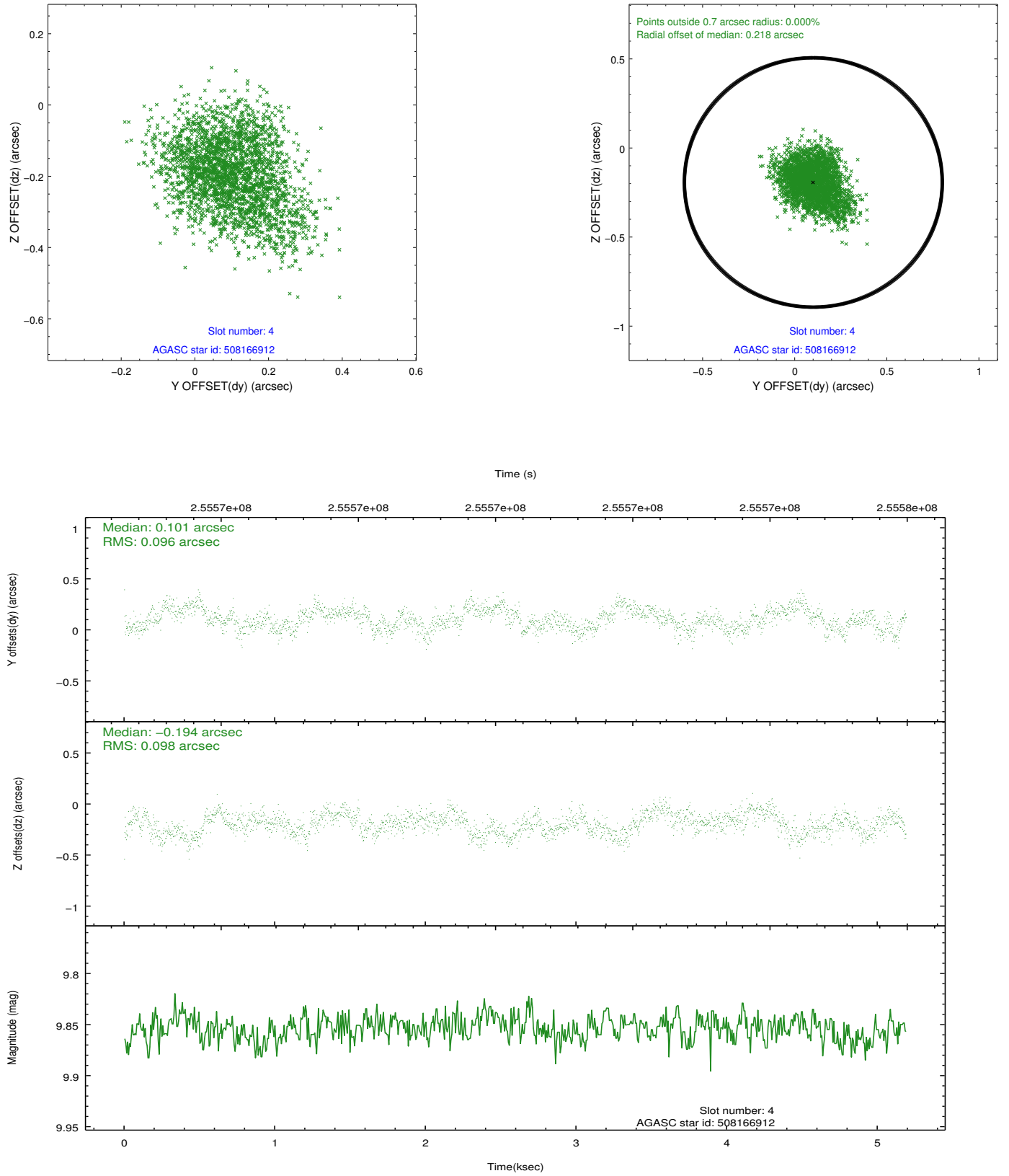
slot	status	id	mag	n_pts	med_dy	med_dz	dr1	dr2	ra	dec	mean_y	mean_z
0	FID	ACIS-I-1	7.24	1266	-0.009	-0.041	0.011	0.019	0.000000	0.000000	931.87	-834.35
1	FID	ACIS-I-4	7.17	1266	0.160	0.056	0.009	0.014	0.000000	0.000000	2152.75	1064.95
2	FID	ACIS-I-5	7.22	1265	-0.249	0.055	0.008	0.017	0.000000	0.000000	-1814.84	1064.18
3	GUIDE	508166208	9.78	2530	0.009	0.180	0.108	0.177	243.617118	54.978511	862.43	-1871.41
4	GUIDE	508166912	9.85	2531	0.101	-0.194	0.147	0.238	241.478927	54.924337	-809.30	2224.05
5	GUIDE	508170896	8.98	2530	0.092	-0.071	0.103	0.159	242.052968	54.527984	-1769.44	632.19
6	GUIDE	508172800	7.92	2531	-0.144	0.181	0.096	0.146	242.573753	54.657892	-966.79	-236.20
7	GUIDE	508573872	8.68	2531	-0.056	-0.098	0.105	0.166	241.738816	55.437101	1109.40	2317.74

2.4 Star Slots

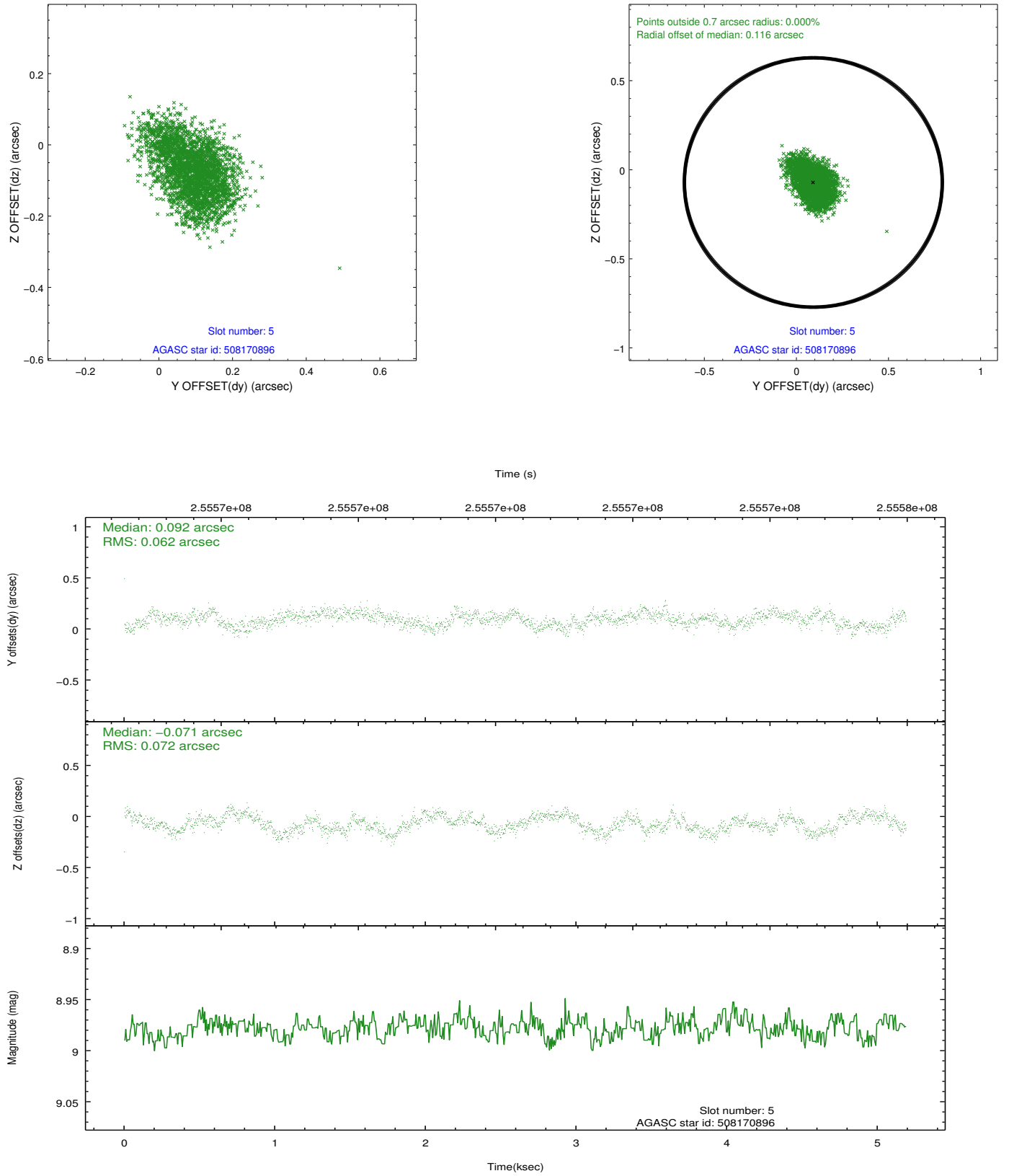
2.4.1 Slot 3



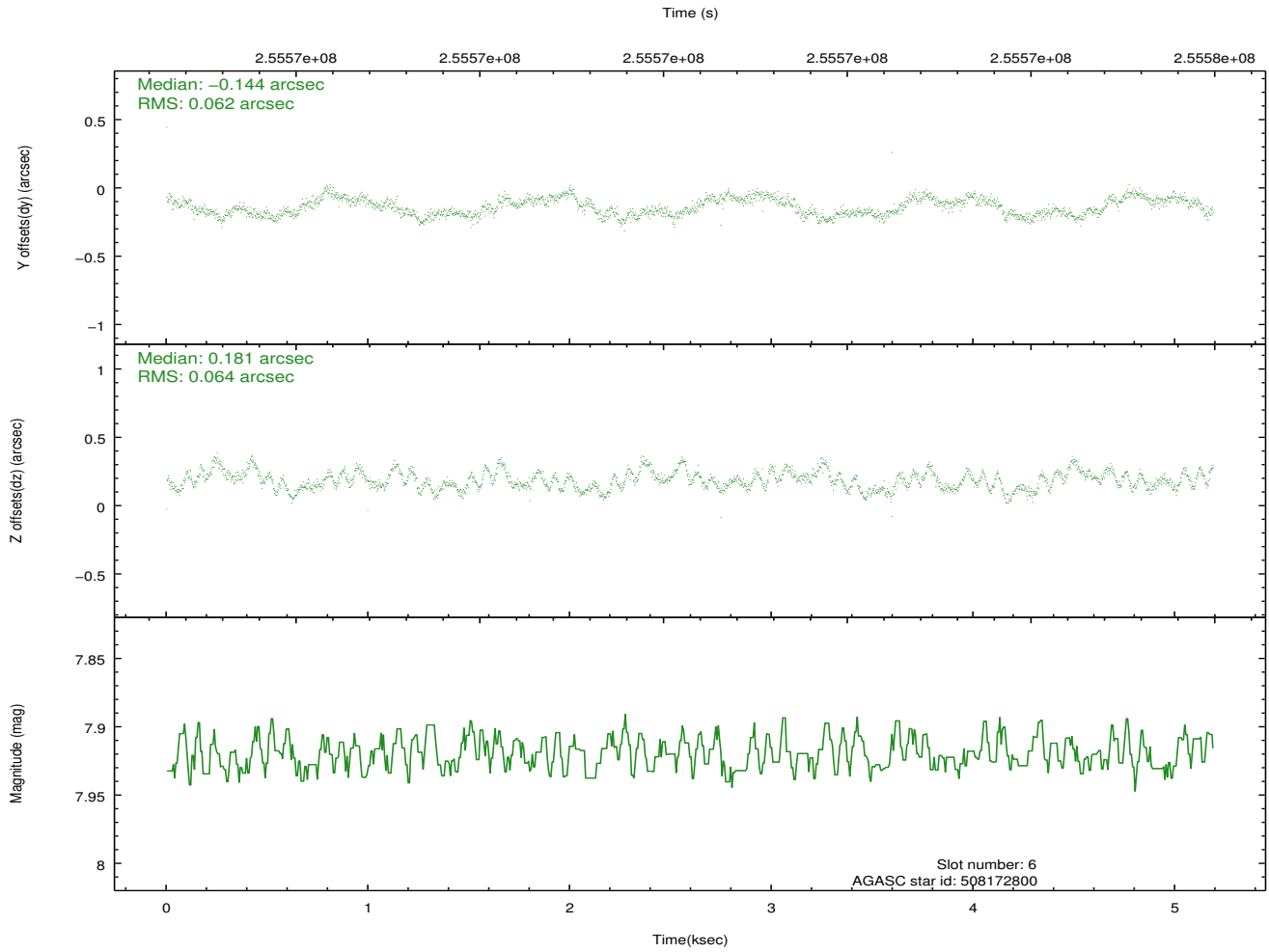
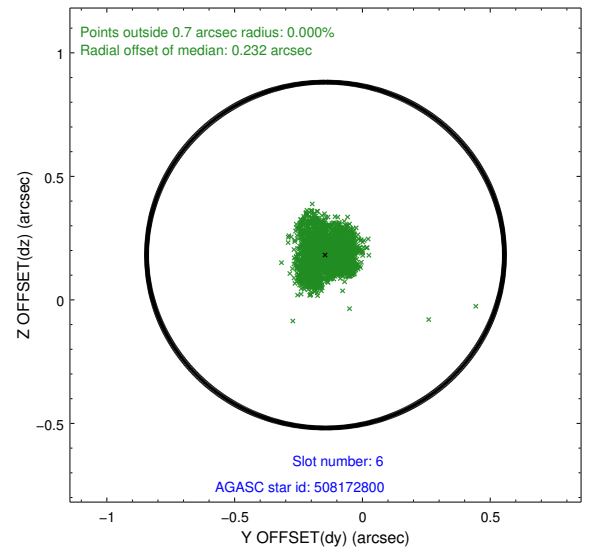
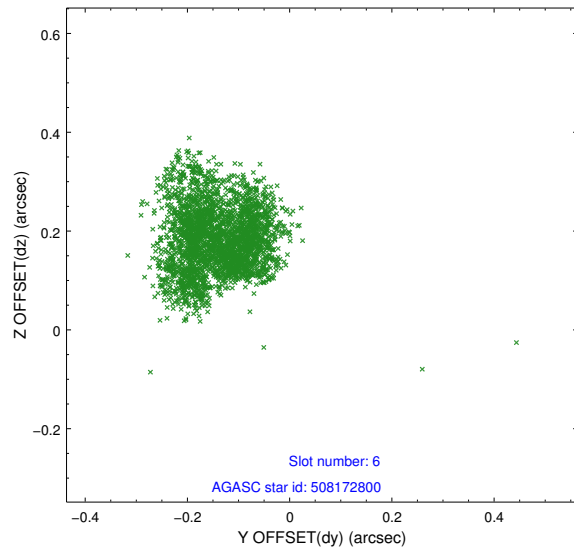
2.4.2 Slot 4



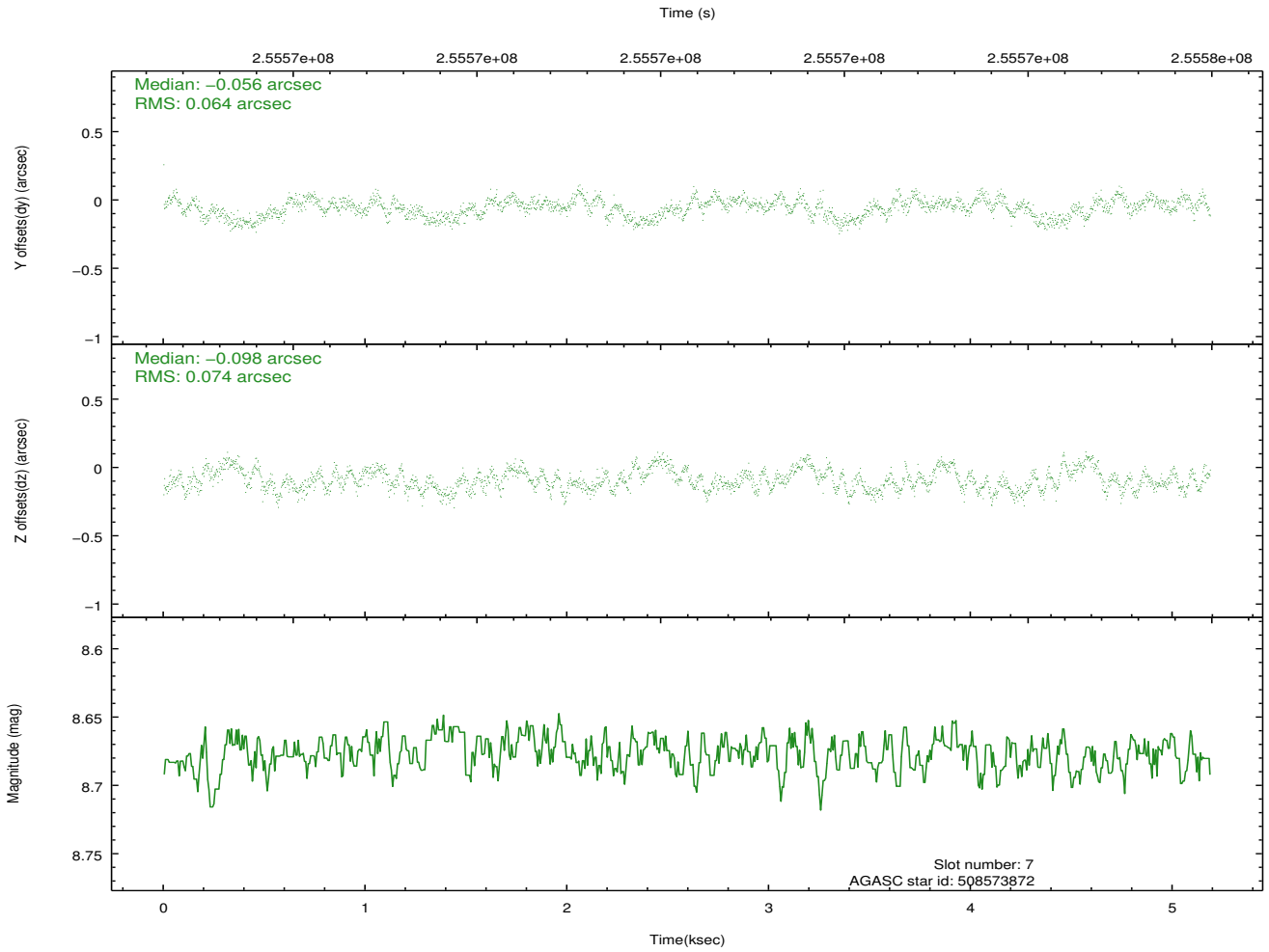
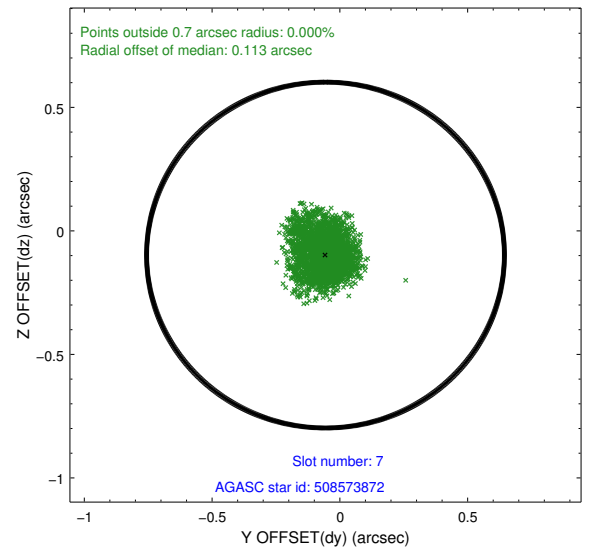
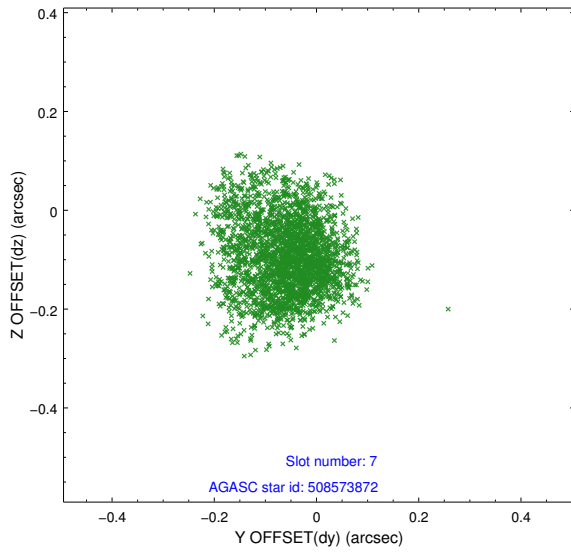
2.4.3 Slot 5



2.4.4 Slot 6

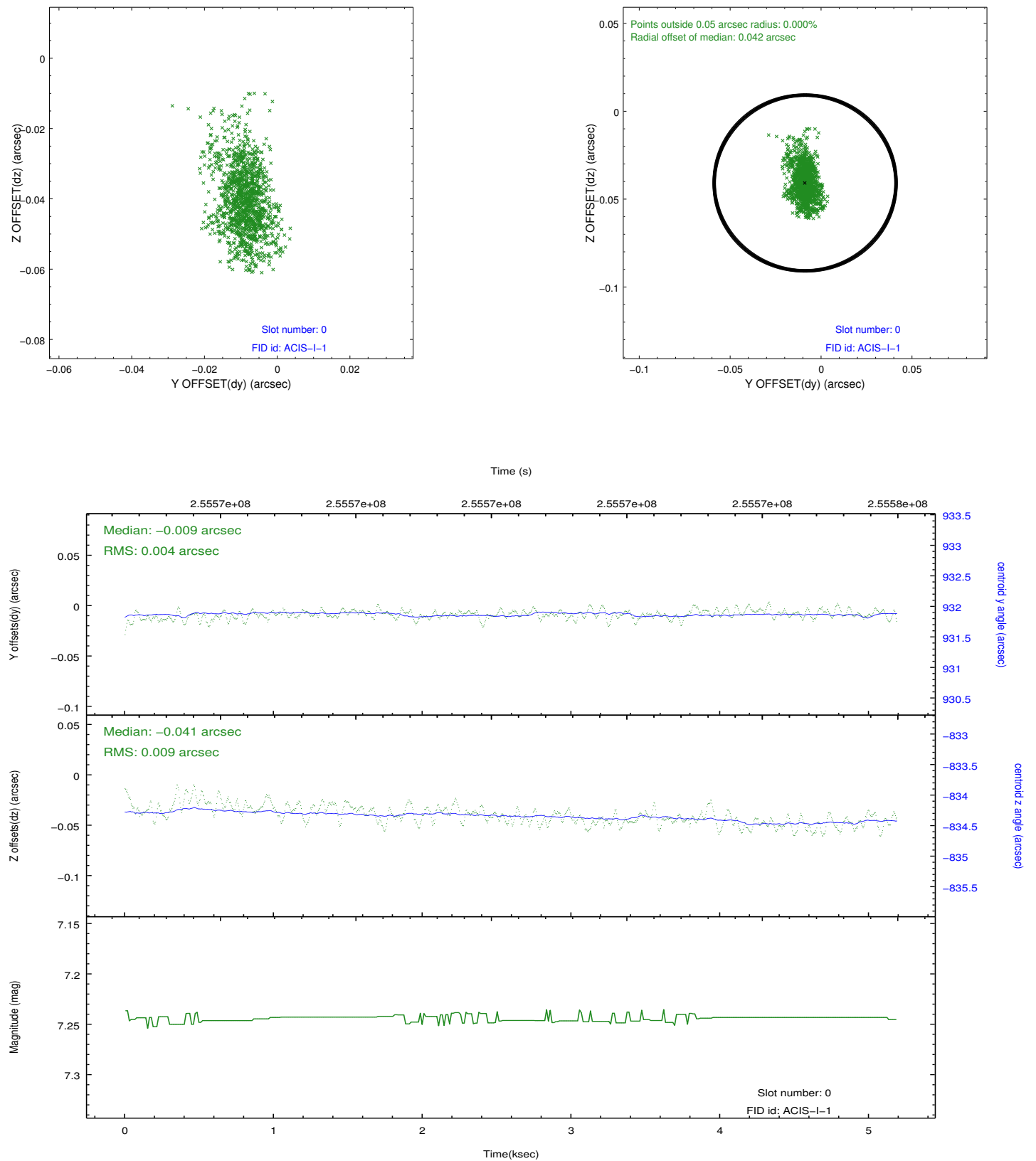


2.4.5 Slot 7

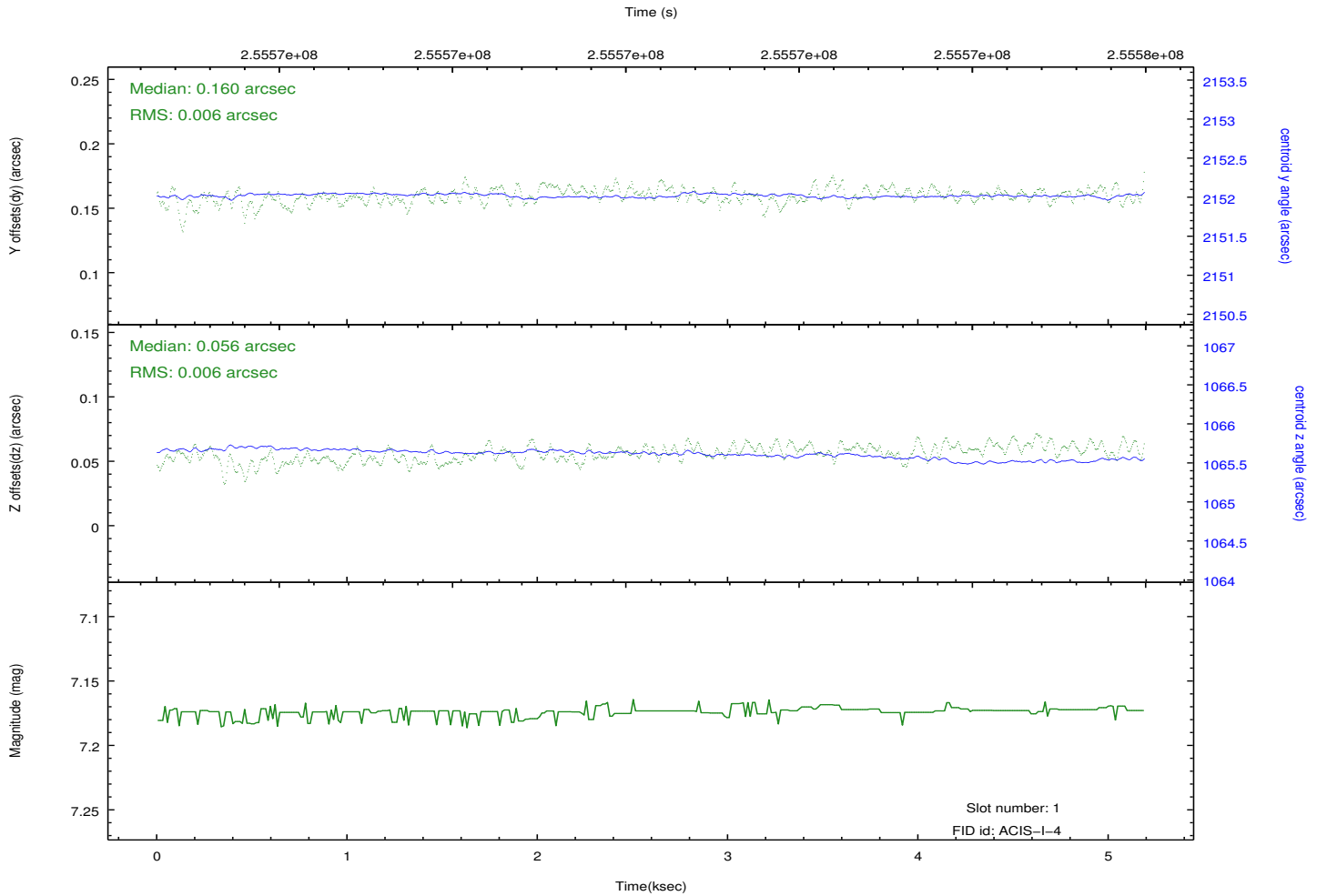
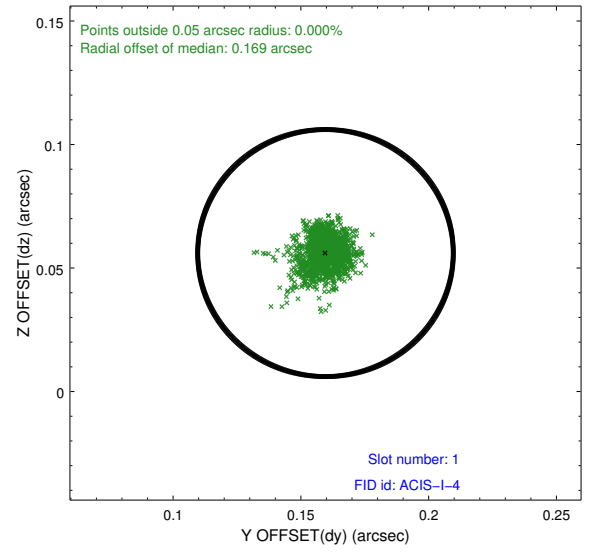
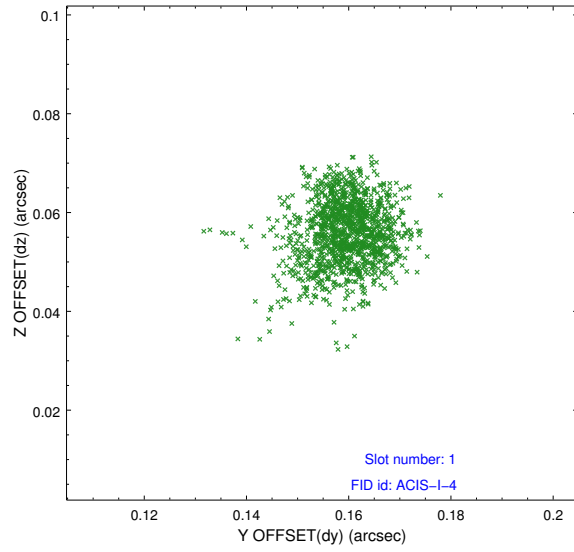


2.5 FID Slots

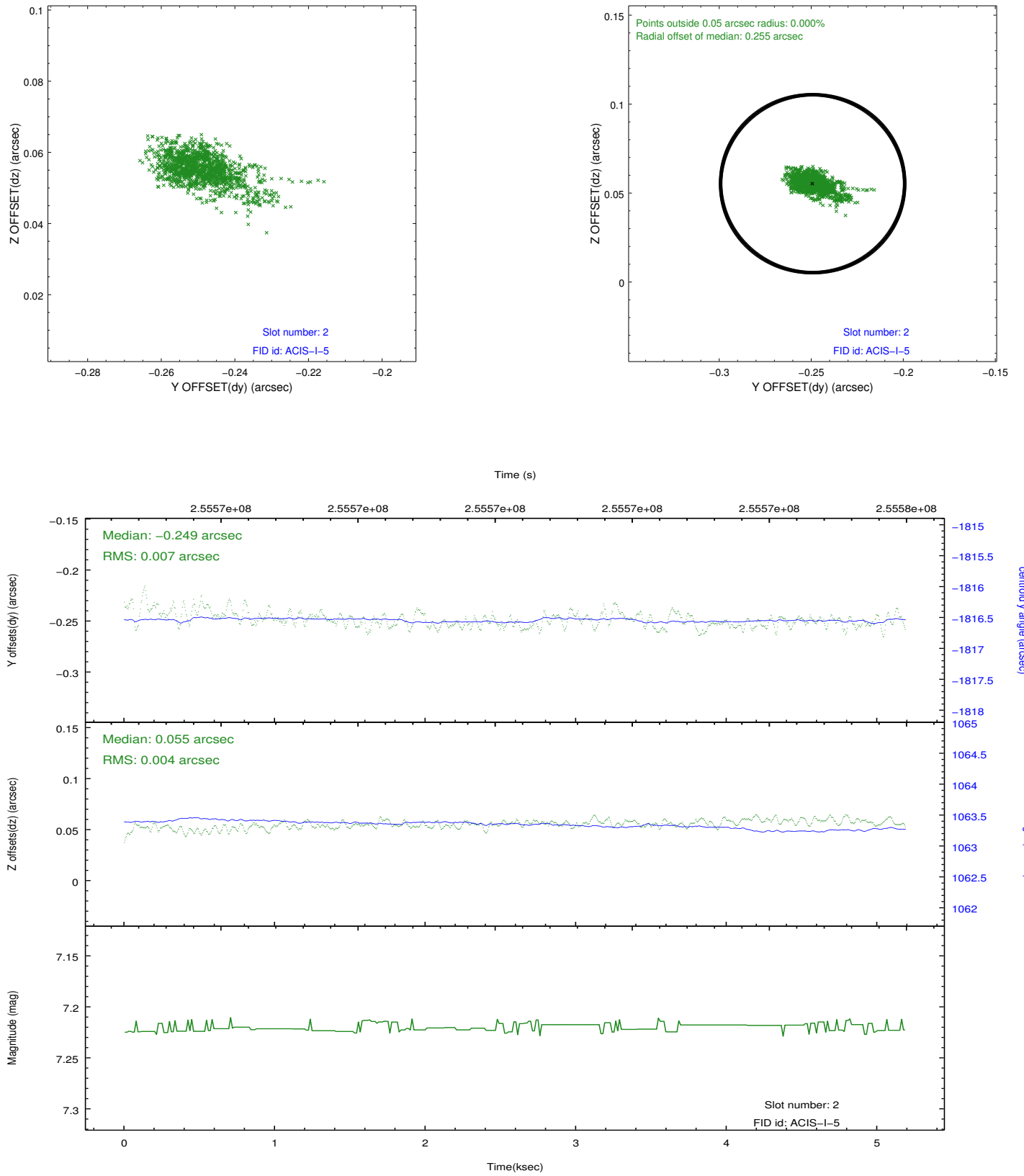
2.5.1 Slot 0



2.5.2 Slot 1



2.5.3 Slot 2



A Summary

A.1 Status

V&V Scientist	Jen Lauer
V&V Date (YYYY-MM-DD)	2012.03.27
V&V Edition	1
V&V Disposition and Status	OK
V&V Charge Time	4.75199998

A.2 Comments