

# V&V Reference Report

## L2 ASCDS Version : 8.4.3.1

Observation 58703 - L2 Version 2  
Chandra X-Ray Center

L2 Processing Date : Apr 13 2012

## Contents

<b>1</b>	<b>Front</b>	<b>2</b>
<b>2</b>	<b>OBI</b>	<b>3</b>
2.1	OBI . . . . .	3
2.1.1	Images . . . . .	3
2.1.2	Bias . . . . .	3
2.1.3	Parameters . . . . .	4
2.1.4	Events . . . . .	4
2.2	Compared Parameters . . . . .	5
2.3	Star Slots . . . . .	6
2.4	FID Slots . . . . .	6
<b>A</b>	<b>Summary</b>	<b>7</b>
A.1	Status . . . . .	7
A.2	Comments . . . . .	7

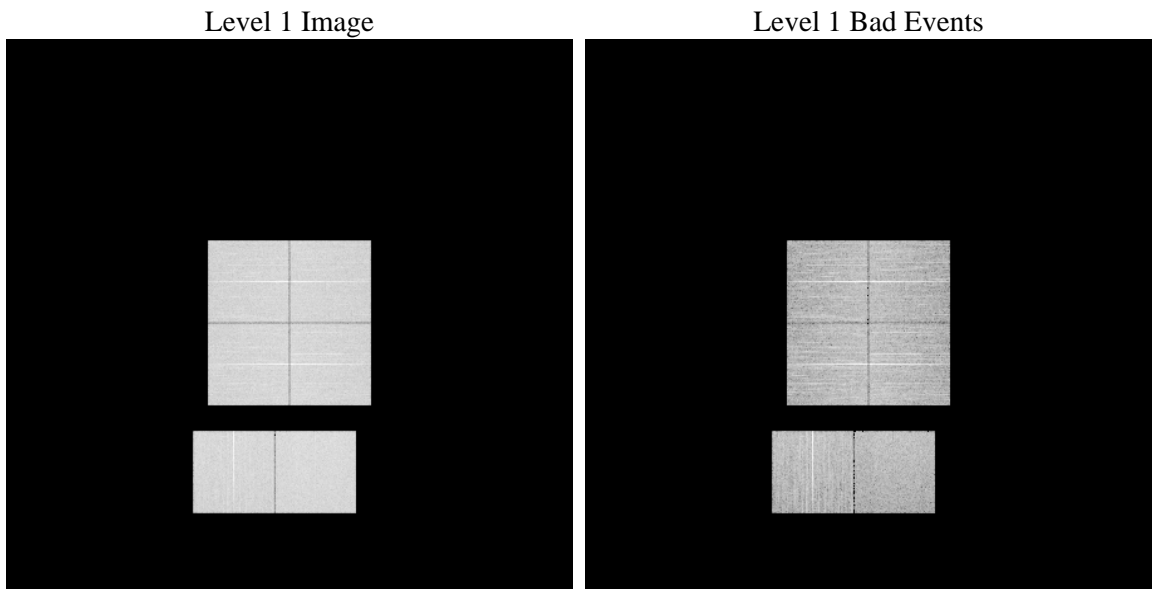
# 1 Front

seq_num	&#160	Sequence number
obs_id	58703	Observation id
title	ACIS-012367 diagnostics	Proposal title
observer	CHANDRA engineering request/realtime commanding	Principal investig
object	&#160	Source name
dtcycle	0	&#160
cycle	P	events from which exps? Prim/Second/Both
ra_targ	0.0	Observer's specified target RA [deg]
dec_targ	0.0	Observer's specified target Dec [deg]
ra_nom	206.01523988161	Nominal RA [deg]
dec_nom	27.025217579661	Nominal Dec [deg]
roll_nom	28.910005143145	Nominal Roll [deg]
revision	2	Processing version of data
ontime	7797.5162058473	Sum of GTIs [s]
livetime	7698.7793605482	Livetime [s]
ontime0	7794.2341756225	Sum of GTIs [s]
ontime1	7797.4341258407	Sum of GTIs [s]
ontime2	7797.3930858374	Sum of GTIs [s]
ontime3	7797.5572458506	Sum of GTIs [s]
ontime6	7794.1110556126	Sum of GTIs [s]
ontime7	7797.5162058473	Sum of GTIs [s]
l2events	827855	Number of level 2 events

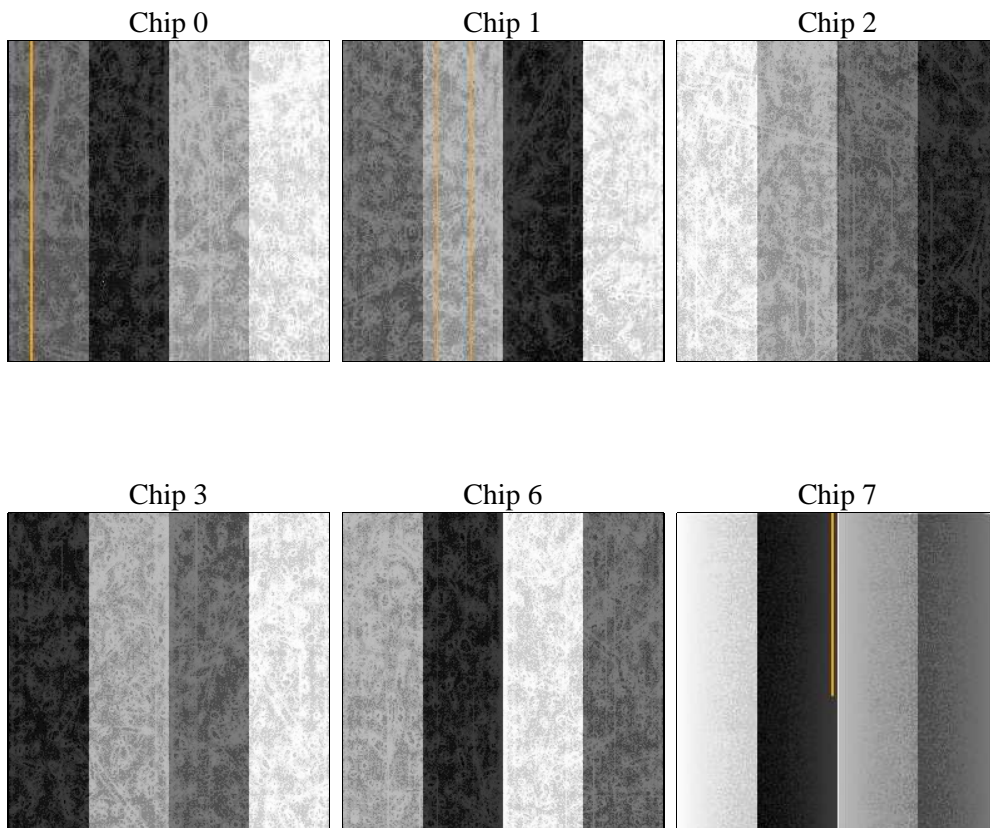
## 2 OBI

### 2.1 OBI

#### 2.1.1 Images



#### 2.1.2 Bias



### 2.1.3 Parameters

obi_num	0	Obi number	sched_exp_time	0.0	[s] Scheduled observation exposure time
ascdsver	8.4.3.1	Processing system revision	ontime	7797.5162058473	Sum of GTIs [s]
caldsver	4.4.9	&#160	ontime0	7794.2341756225	Sum of GTIs [s]
date	2012-04-13T15:57:13	Date and time of file creation	ontime1	7797.4341258407	Sum of GTIs [s]
revision	2	Processing version of data	ontime2	7797.3930858374	Sum of GTIs [s]
			ontime3	7797.5572458506	Sum of GTIs [s]
			ontime6	7794.1110556126	Sum of GTIs [s]
			ontime7	7797.5162058473	Sum of GTIs [s]
			l1events	1272717	Number of level 1 events

### 2.1.4 Events

	ccd 0	ccd 1	ccd 2	ccd 3	ccd 6	ccd 7		ccd 0	ccd 1	ccd 2	ccd 3	ccd 6	ccd 7
level 1 events	203958	202082	211602	212191	214988	227896	grade 0 events	74977	74212	77340	77165	76947	37611
rejected events	65669	63302	71749	71859	69992	58266		36%	36%	36%	36%	35%	16%
rejected %	32%	31%	33%	33%	32%	25%	grade 1 events	523	446	587	533	466	173
								0%	0%	0%	0%	0%	0%
							grade 2 events	24687	25151	23826	24165	25596	37106
								12%	12%	11%	11%	11%	16%
							grade 3 events	9047	9026	9112	9170	9073	16167
								4%	4%	4%	4%	4%	7%
							grade 4 events	8945	8945	9182	9365	9123	16273
								4%	4%	4%	4%	4%	7%
							grade 5 events	3614	3747	3487	4064	4057	9829
								1%	1%	1%	1%	1%	4%
							grade 6 events	20633	21446	20393	20467	24257	62473
								10%	10%	9%	9%	11%	27%
							grade 7 events	61532	59109	67675	67262	65469	48264
								30%	29%	31%	31%	30%	21%

## 2.2 Compared Parameters

Parameter	Planned	Actual	Parameter	Planned	Actual
Instrument	ACIS	ACIS	Obspar format version number	7	7
Detector	ACIS-012367	ACIS-012367	Obspar file type	PREDICTED	ACTUAL
Grating	NONE	NONE	Obspar update status	NONE	UPDATED
Data mode	FAINT	FAINT	On-chip summing requested	N	N
Observation mode	SECONDARY	SECONDARY	Subarray requested	NONE	NONE
[deg] Pointing RA	0	206.0152398816138	Alternating exposures requested	N	N
[deg] Pointing Dec	0	27.02521757966128	[s] Primary exposure time	3.2	3.2
[deg] Pointing Roll	0.0	28.91000514314493			
[mm] SIM focus pos	-0.782348	-0.6828225247311905			
[mm] SIM defocus	0	0.8505141146731063			
[mm] SIM translation stage pos	-233.592463	250.466033080201			
[mm] SIM translation stage offset	0	-0.01005468664627074			
[s] Observation start time (MET)	279856988.709361	279856987.68434			
Observation start date	2006-11-14T02:03:09	2006-11-14T02:03:07			
[s] Observation end time (MET)	279874247.660177	279874246.63515			
Observation end date	2006-11-14T06:50:48	2006-11-14T06:50:46			
Read mode	TIMED	TIMED			

## **2.3 Star Slots**

## **2.4 FID Slots**

## A Summary

### A.1 Status

V&V Scientist	Beth Sundheim
V&V Date (YYYY-MM-DD)	2012.04.16
V&V Edition	1
V&V Disposition and Status	OK
V&V Charge Time	7.7975162058473

### A.2 Comments