

V&V Reference Report

L2 ASCDS Version : 8.5.1.1

Observation 5843 - L2 Version 3
Chandra X-Ray Center

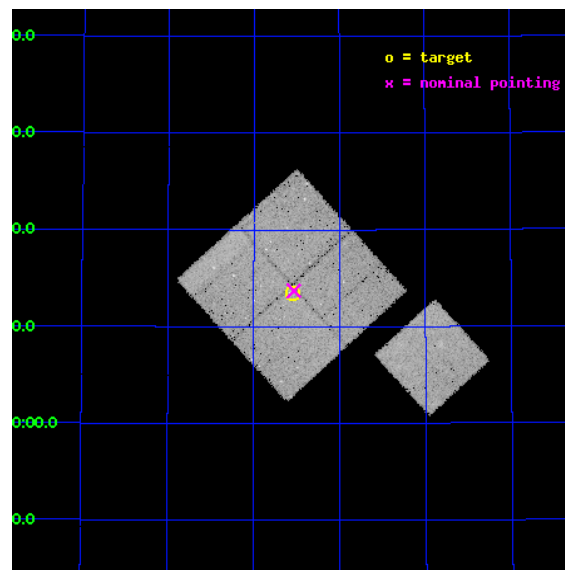
L2 Processing Date : Dec 20 2012

Contents

1	Front	2
2	OBI	3
2.1	OBI	3
2.1.1	Images	3
2.1.2	Bias	3
2.1.3	Parameters	4
2.1.4	Events	4
2.2	Compared Parameters	5
2.3	Aspect	6
2.4	Star Slots	9
2.4.1	Slot 3	9
2.4.2	Slot 4	10
2.4.3	Slot 5	11
2.4.4	Slot 6	12
2.4.5	Slot 7	13
2.5	FID Slots	14
2.5.1	Slot 0	14
2.5.2	Slot 1	15
2.5.3	Slot 2	16
A	Summary	17
A.1	Status	17
A.2	Comments	17

1 Front

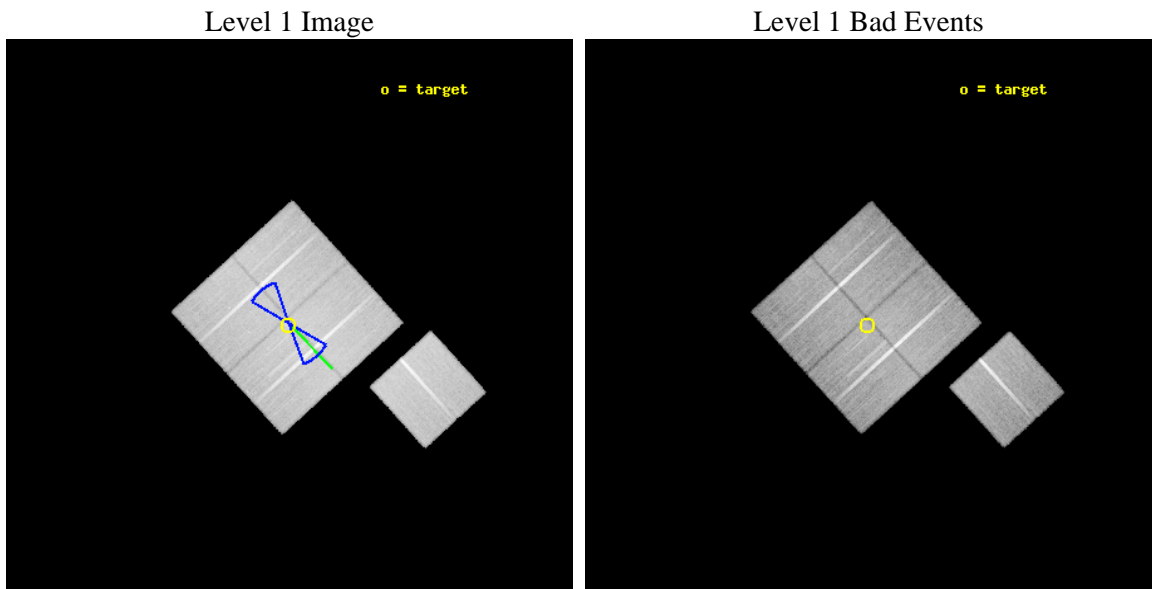
seq_num	900349	Sequence number
obs_id	5843	Observation id
title	Deep Chandra Imaging of the Extended Groth Strip: The Co-evolution of Black Holes and Galaxies	Proposal title
observer	Prof Kirpal Nandra	Principal investigator
object	EGS-2	Source name
dtcycle	0	
cycle	P	events from which exps? Prim/Second/Both
ra_targ	215.386246	Observer's specified target RA [deg]
dec_targ	53.224361	Observer's specified target Dec [deg]
ra_nom	215.3829795924	Nominal RA [deg]
dec_nom	53.228591327935	Nominal Dec [deg]
roll_nom	137.62486422649	Nominal Roll [deg]
revision	3	Processing version of data
ontime	45046.058933109	Sum of GTIs [s]
livetime	44457.499010722	Livetime [s]
ontime0	45046.058923185	Sum of GTIs [s]
ontime1	45046.058943093	Sum of GTIs [s]
ontime2	45042.917922944	Sum of GTIs [s]
ontime3	45046.058933109	Sum of GTIs [s]
ontime6	45049.199913353	Sum of GTIs [s]
l2events	117068	Number of level 2 events



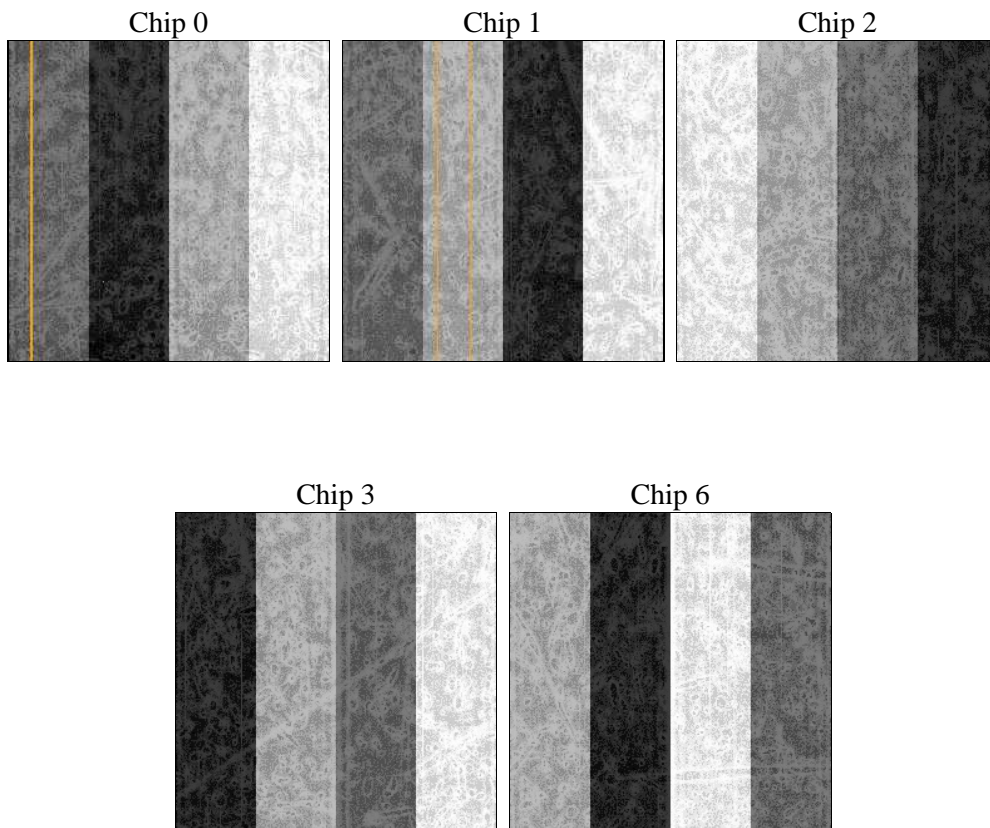
2 OBI

2.1 OBI

2.1.1 Images



2.1.2 Bias



2.1.3 Parameters

obi_num	0	Obi number	sched_exp_time	45000.000000	[s] Scheduled observation exposure time
ascdsver	8.5.1.1	Processing system revision	ontime	45046.058933109	Sum of GTIs [s]
caldbver	4.5.5	 	ontime0	45046.058923185	Sum of GTIs [s]
date	2012-12-20T19:05:58	Date and time of file creation	ontime1	45046.058943093	Sum of GTIs [s]
revision	3	Processing version of data	ontime2	45042.917922944	Sum of GTIs [s]
			ontime3	45046.058933109	Sum of GTIs [s]
			ontime6	45049.199913353	Sum of GTIs [s]
			l1events	1366983	Number of level 1 events

2.1.4 Events

	ccd 0	ccd 1	ccd 2	ccd 3	ccd 6
level 1 events	262640	257991	288691	280640	277021
rejected events	234146	226850	262080	254298	248458
rejected %	89%	87%	90%	90%	89%

	ccd 0	ccd 1	ccd 2	ccd 3	ccd 6
grade 0 events	9928	11304	9361	9313	9798
	3%	4%	3%	3%	3%
grade 1 events	130	152	145	149	115
	0%	0%	0%	0%	0%
grade 2 events	6667	6769	6263	5721	6122
	2%	2%	2%	2%	2%
grade 3 events	3344	3523	2955	3037	3282
	1%	1%	1%	1%	1%
grade 4 events	3015	3291	3018	3059	3218
	1%	1%	1%	1%	1%
grade 5 events	10045	10878	9389	11181	11165
	3%	4%	3%	3%	4%
grade 6 events	5543	6258	5015	5212	6143
	2%	2%	1%	1%	2%
grade 7 events	223968	215816	252545	242968	237178
	85%	83%	87%	86%	85%

2.2 Compared Parameters

Parameter	Planned	Actual	Parameter	Planned	Actual
Instrument	ACIS	ACIS	Obspar format version number	7	7
Detector	ACIS-01236	ACIS-01236	Obspar file type	PREDICTED	ACTUAL
Grating	NONE	NONE	Obspar update status	NONE	UPDATED
Data mode	VFAINT	VFAINT	Number of optional ACIS chips dropped	0	0
Observation mode	POINTING	POINTING	On-chip summing requested	N	N
[deg] Pointing RA	215.427725	215.382979592395	Subarray requested	NONE	NONE
[deg] Pointing Dec	53.222802	53.2285913279354	Alternating exposures requested	N	N
[deg] Pointing Roll	137.380327	137.6248642264884	[s] Primary exposure time	0.000000	3.1
[deg] Roll angle	50.756000	50.756000			
[deg] Roll tolerance	20.000000	20.000000			
Roll constraint allows 180D rotation	Y	Y			
[mm] SIM focus pos	-0.782348	-0.7809083437167272			
[mm] SIM defocus	0	0.001439871863259334			
[mm] SIM translation stage pos	-233.592463	-233.5874344608287			
[mm] SIM translation stage offset	0	-0.005018542100998502			
[s] Observation start time (MET)	227640551.184000	227639589.24061			
Observation start date	2005-03-19T17:28:07	2005-03-19T17:13:09			
[s] Observation end time (MET)	227685551.184000	227686027.89272			
Observation end date	2005-03-20T05:58:07	2005-03-20T06:07:07			
Read mode	TIMED	TIMED			

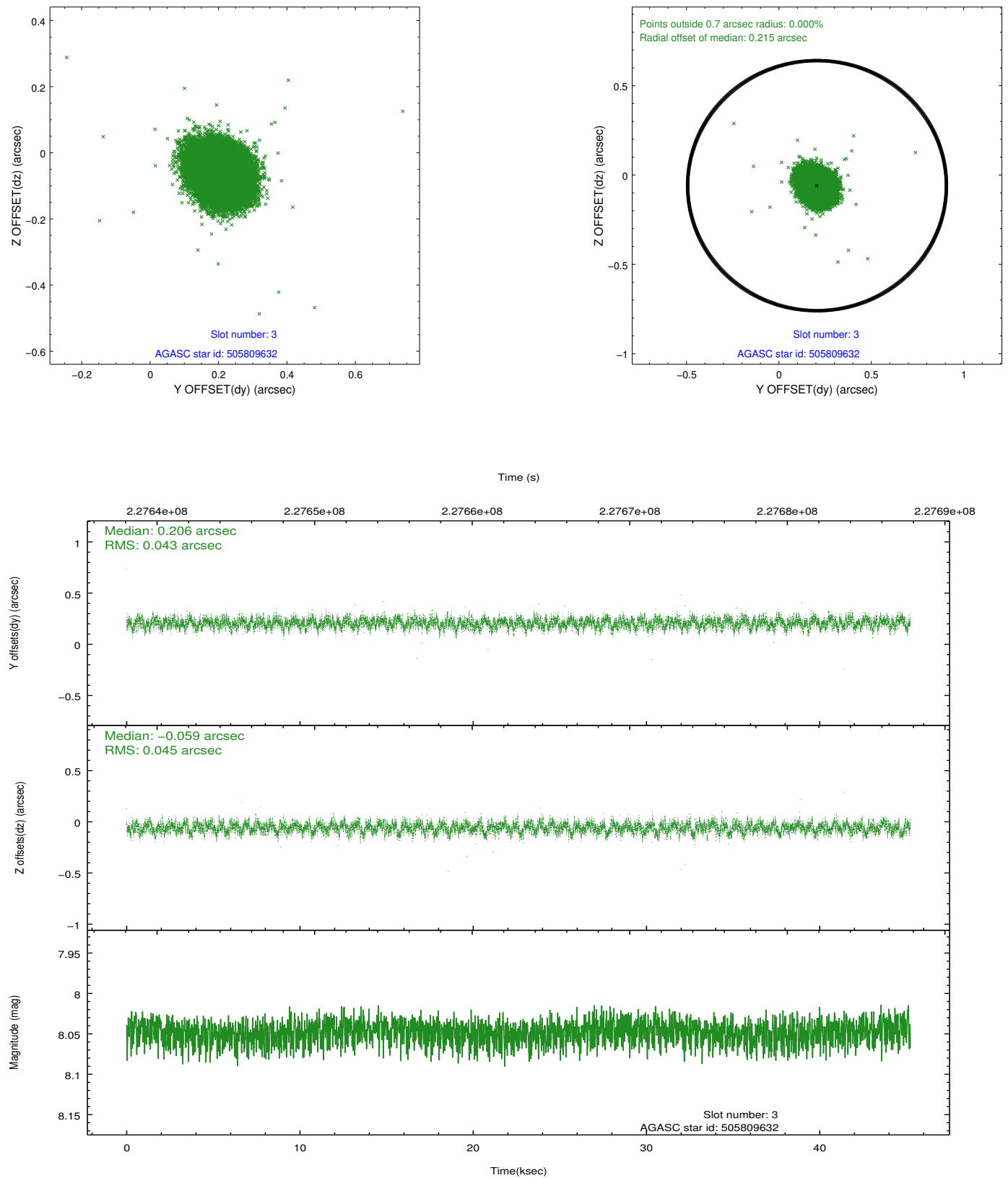
2.3 Aspect

Slot Statistics

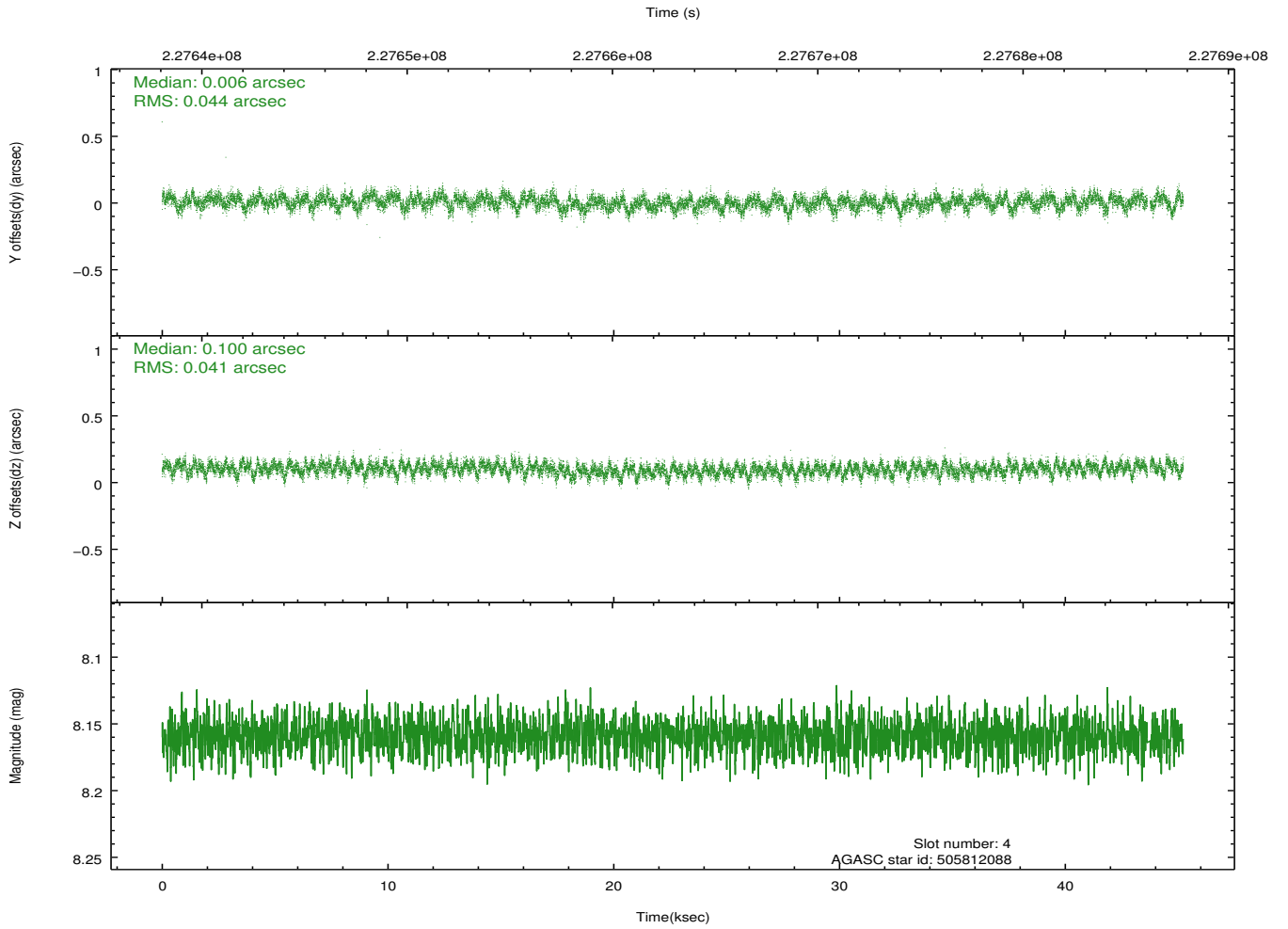
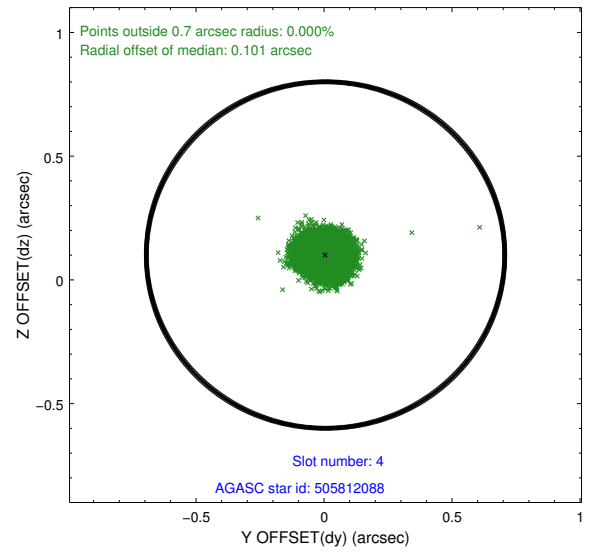
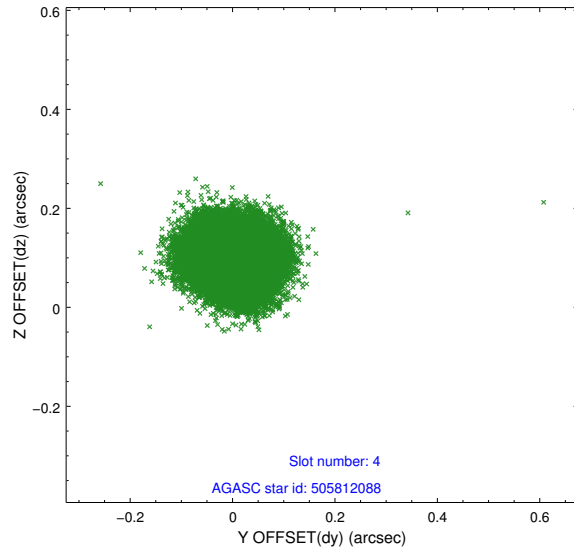
slot	status	id	mag	n_pts	med_dy	med_dz	dr1	dr2	ra	dec	mean_y	mean_z
0	FID	ACIS-I-1	7.24	11032	0.013	0.034	0.019	0.028	0.000000	0.000000	933.69	-832.09
1	FID	ACIS-I-5	7.23	11033	-0.161	0.041	0.018	0.027	0.000000	0.000000	-1814.60	1065.40
2	FID	ACIS-I-6	7.26	11031	0.058	-0.002	0.010	0.019	0.000000	0.000000	399.28	1709.86
3	GUIDE	505809632	8.05	22063	0.206	-0.059	0.066	0.105	215.499426	53.521185	614.99	-894.17
4	GUIDE	505812088	8.16	22004	0.006	0.100	0.065	0.102	214.186617	53.263562	2081.71	1685.01
5	GUIDE	505815088	7.28	22054	-0.035	-0.022	0.060	0.094	216.315963	53.584954	-506.17	-2253.12
6	GUIDE	505815928	8.30	22063	-0.061	-0.011	0.061	0.096	216.234742	53.074559	-1638.87	-796.34
7	GUIDE	505817384	8.07	22060	-0.114	-0.005	0.076	0.123	216.827424	53.311152	-1978.99	-2294.39

2.4 Star Slots

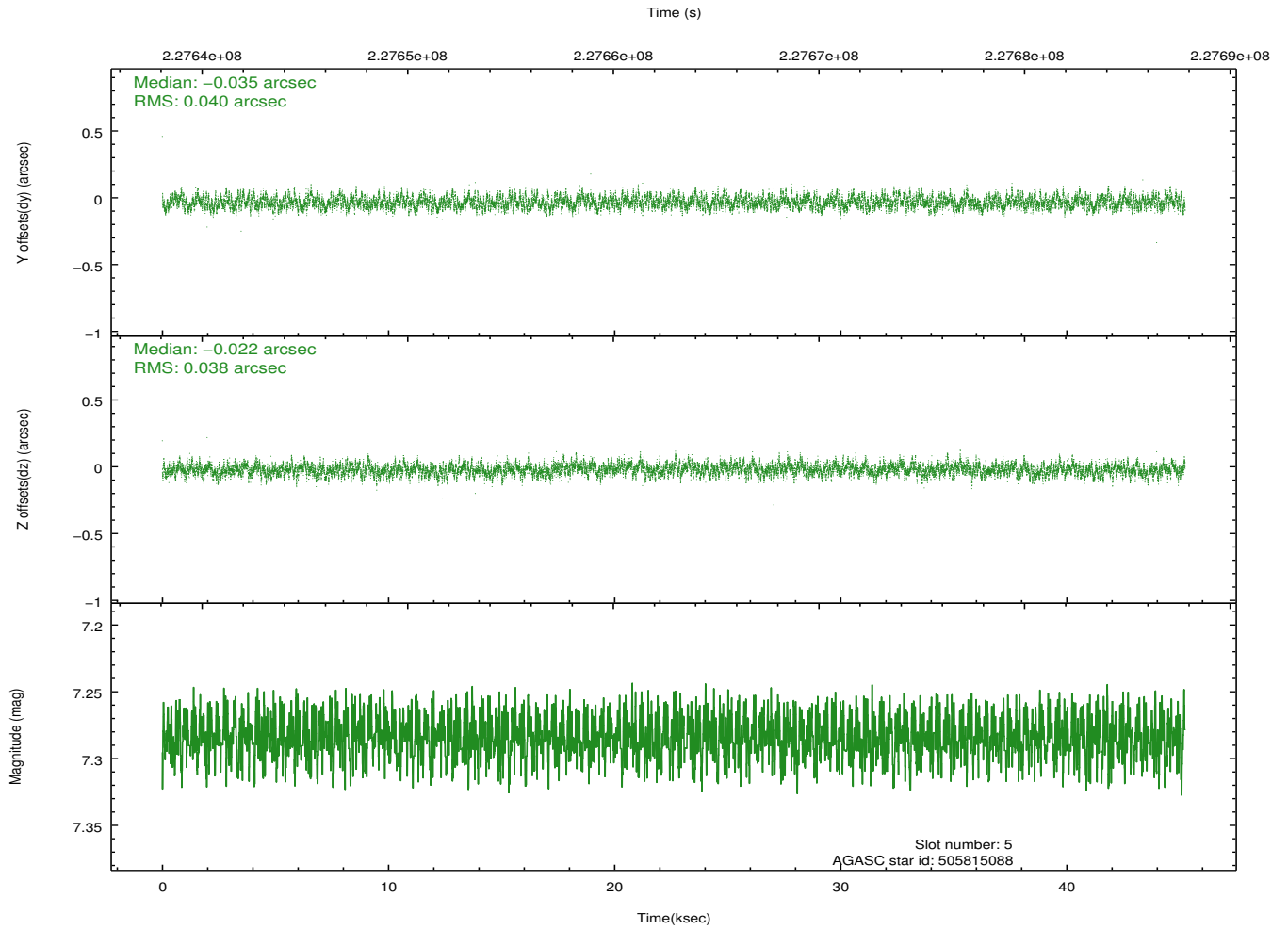
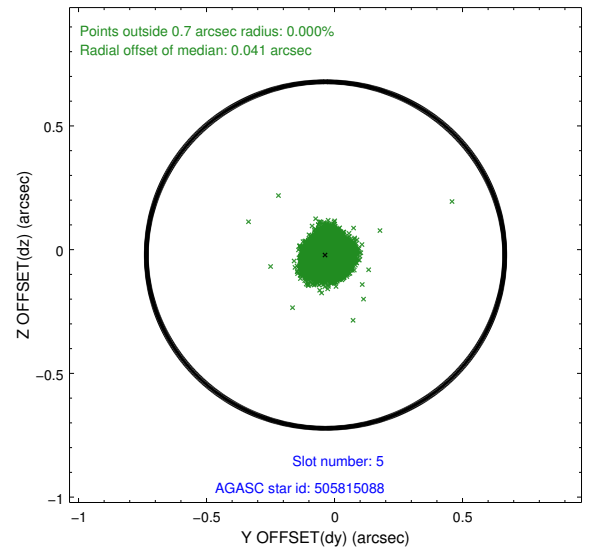
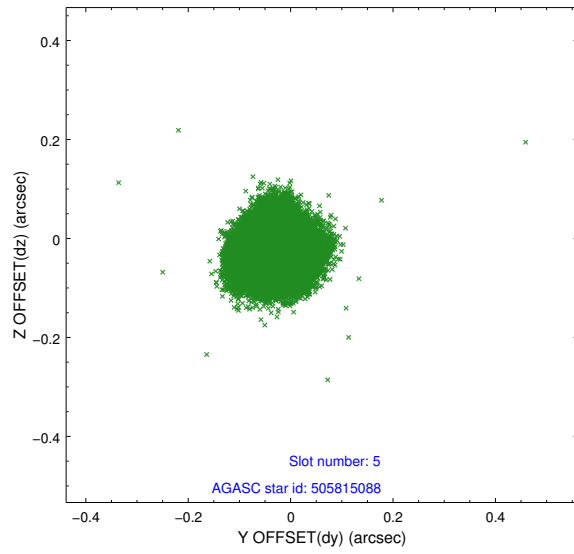
2.4.1 Slot 3



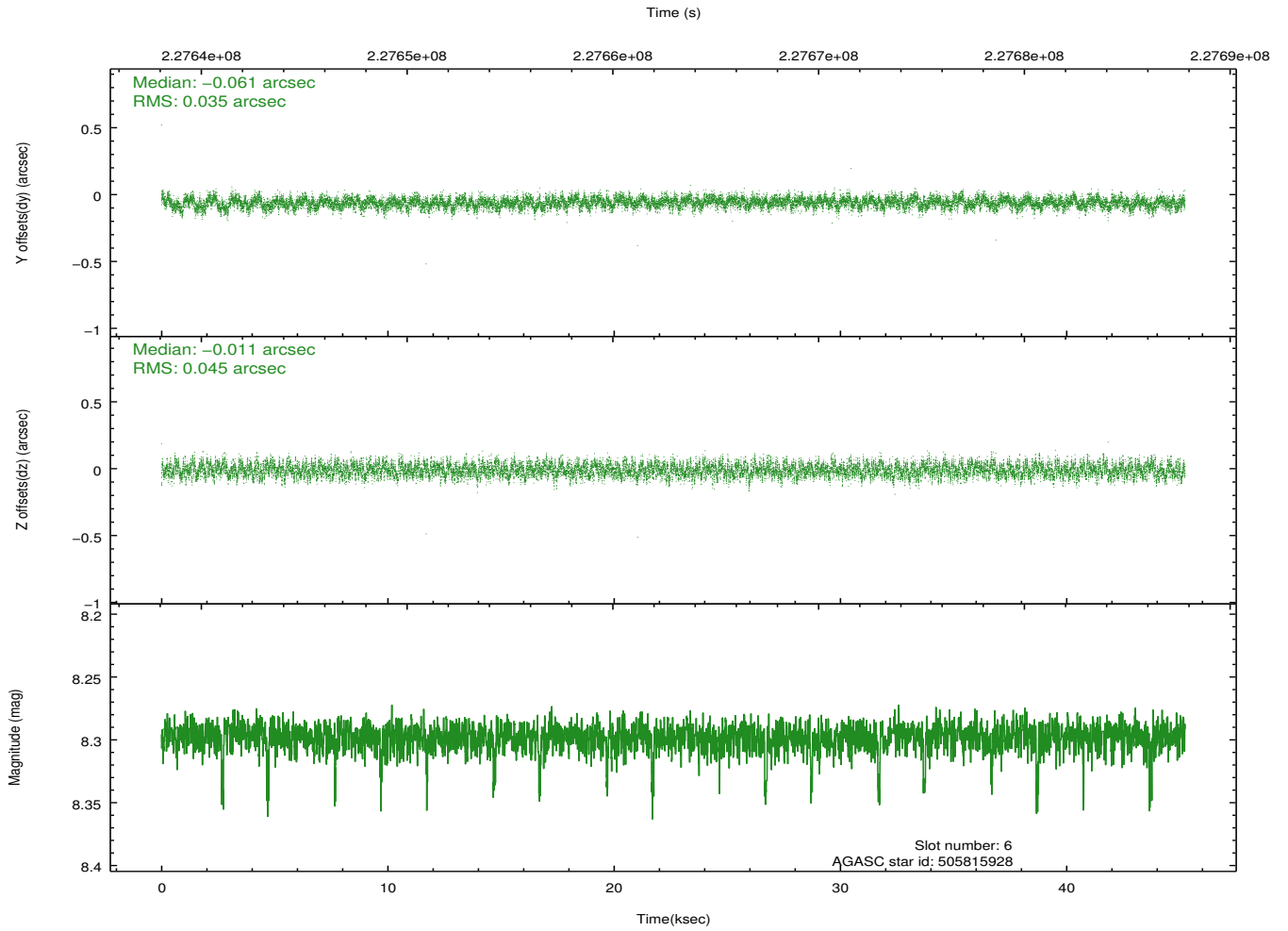
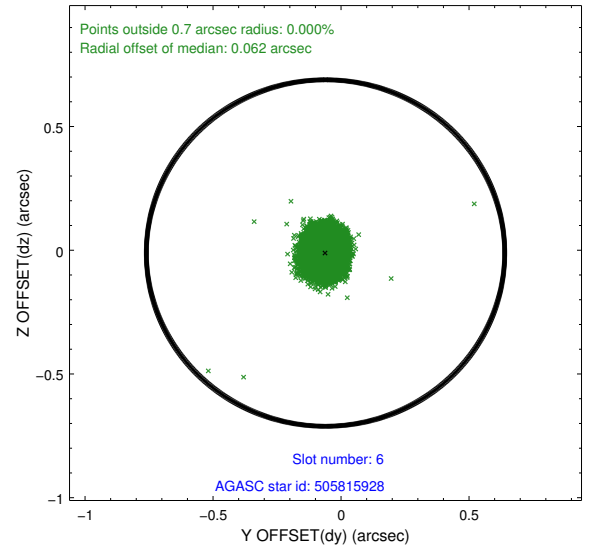
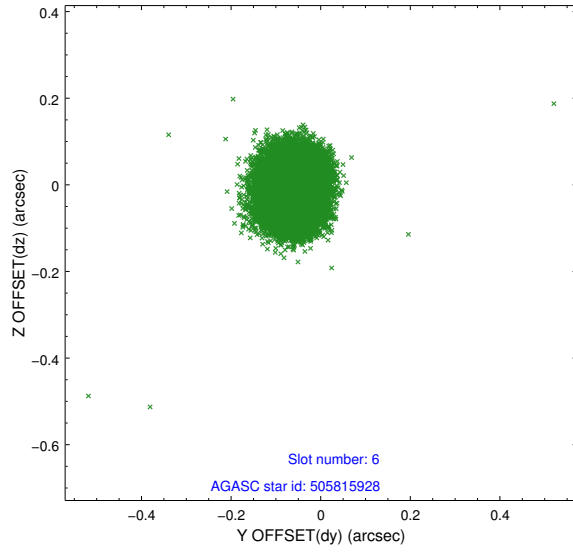
2.4.2 Slot 4



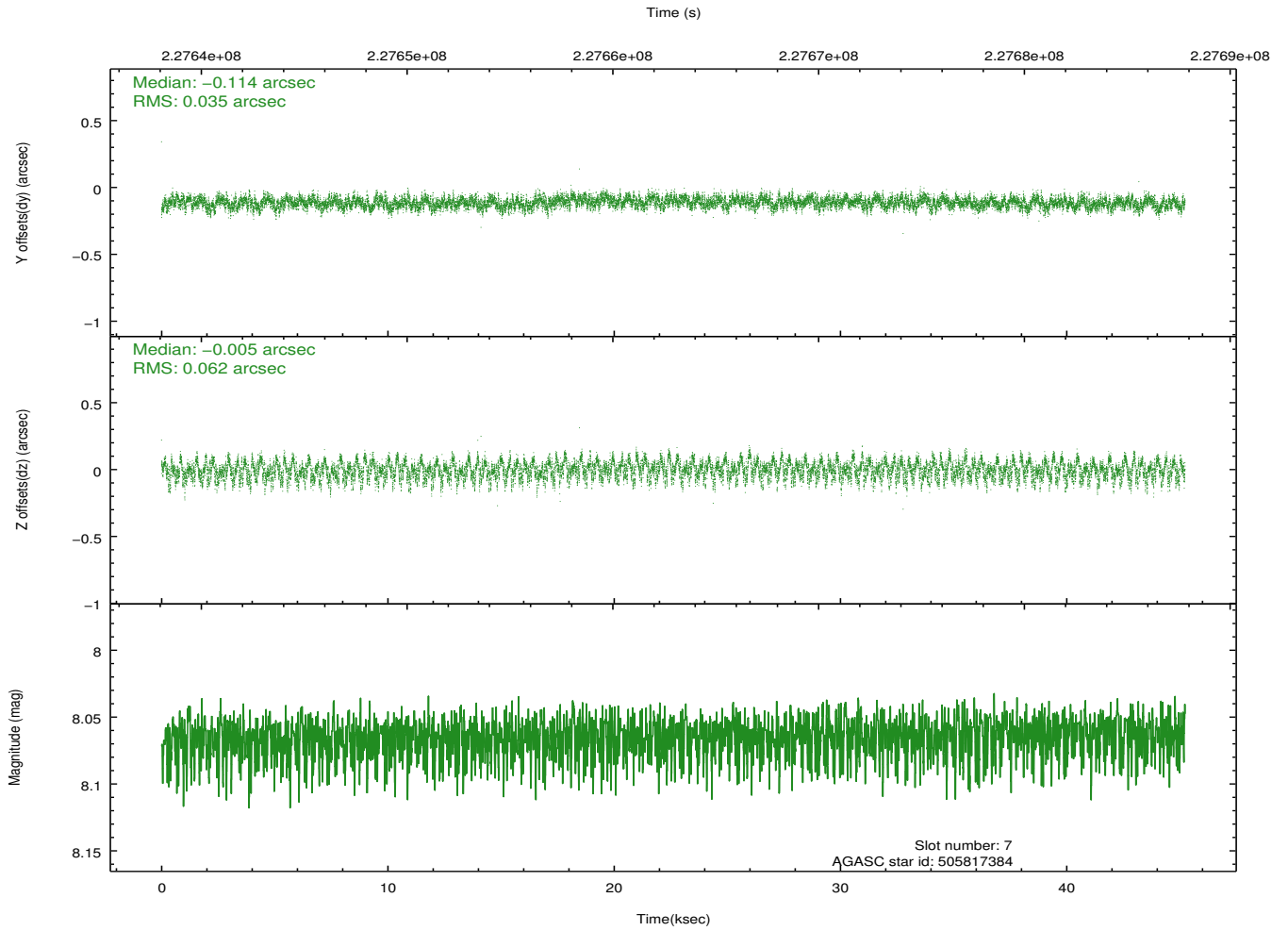
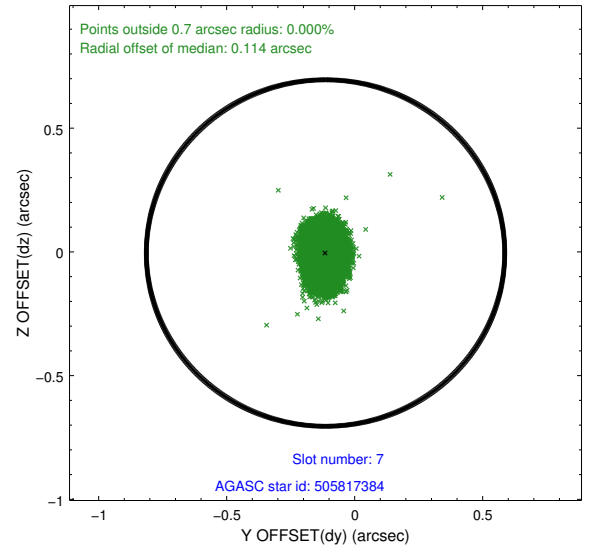
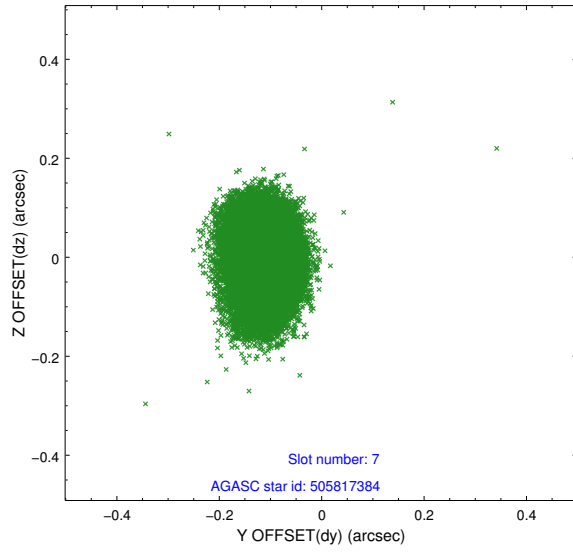
2.4.3 Slot 5



2.4.4 Slot 6

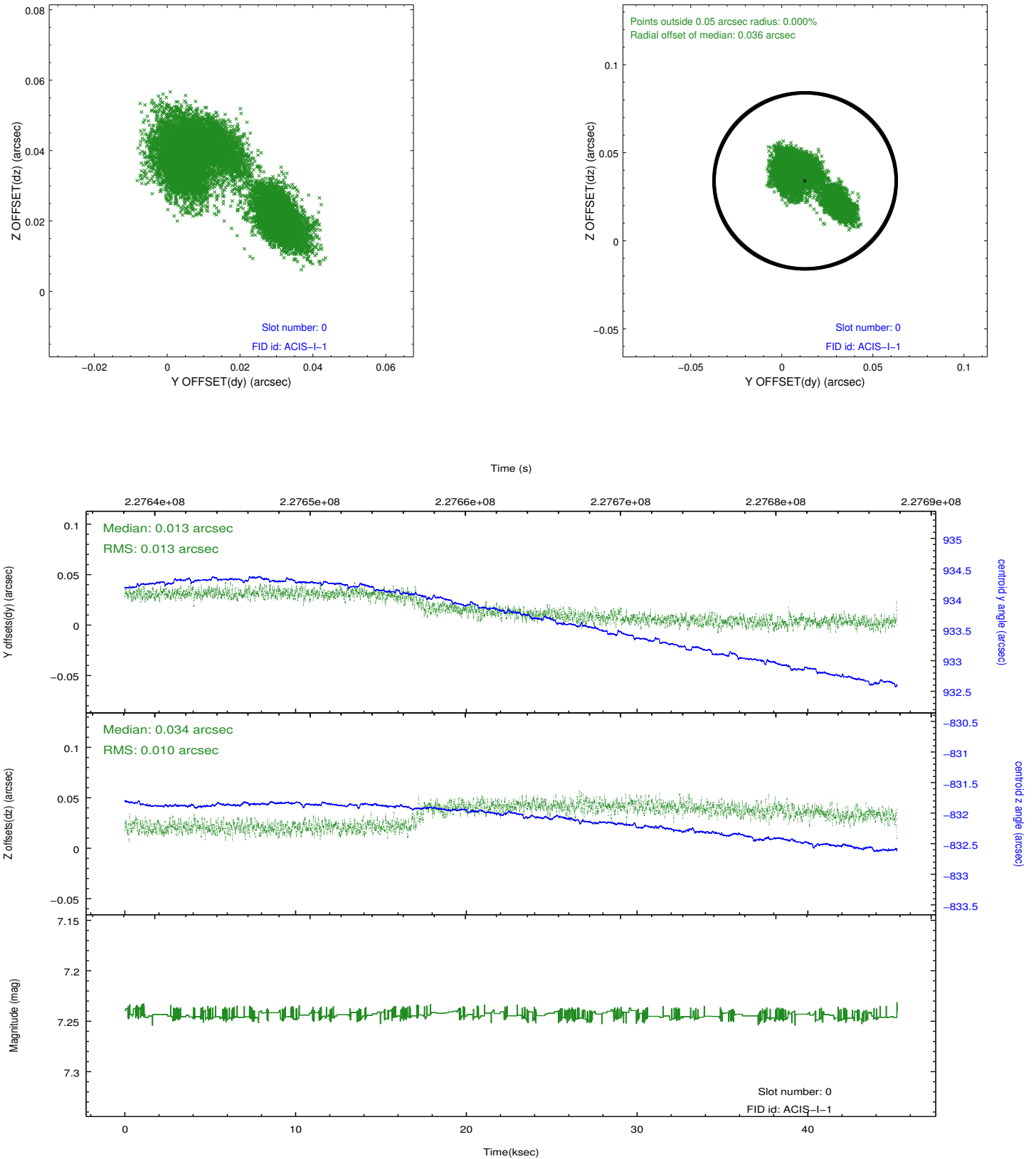


2.4.5 Slot 7

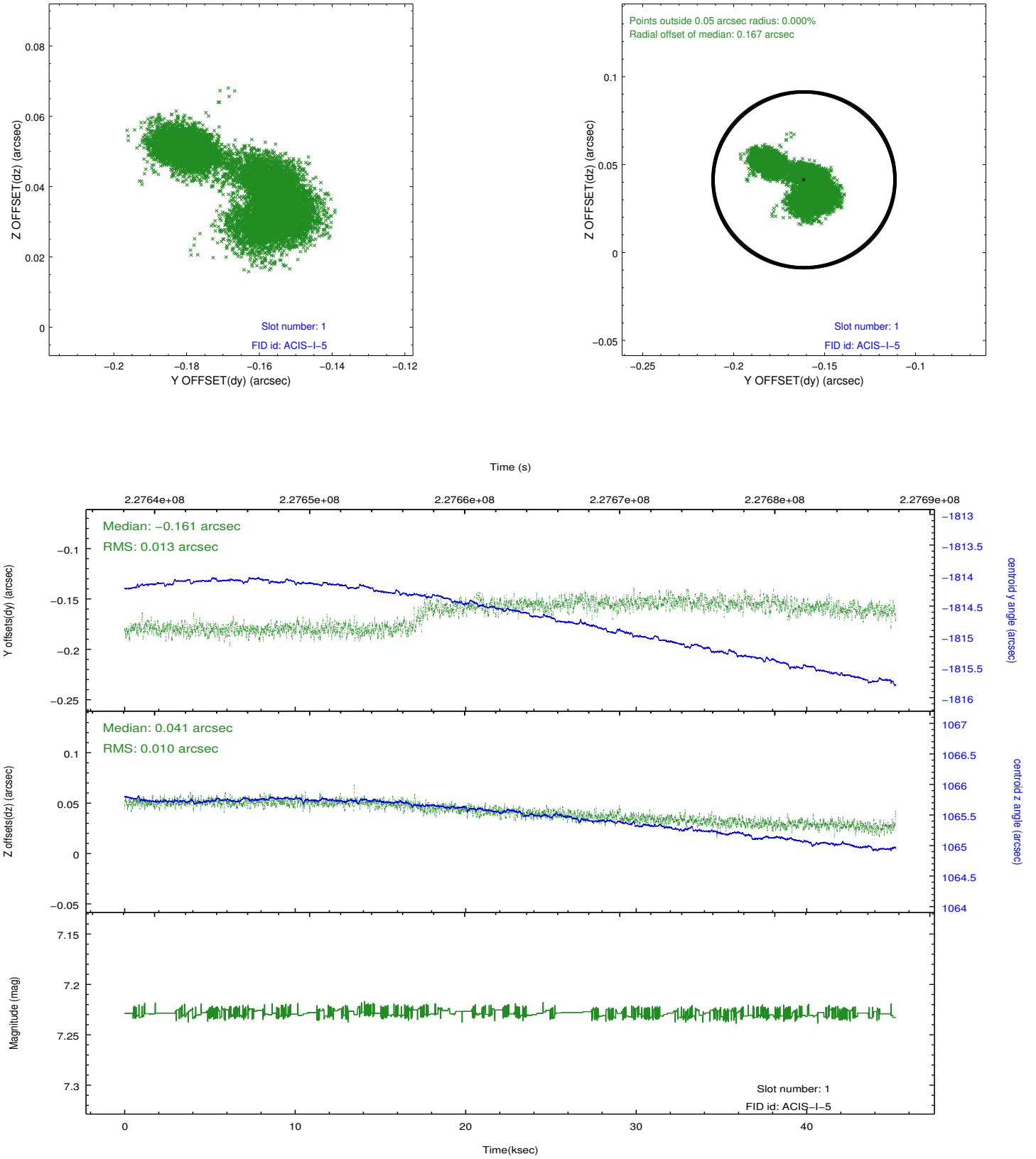


2.5 FID Slots

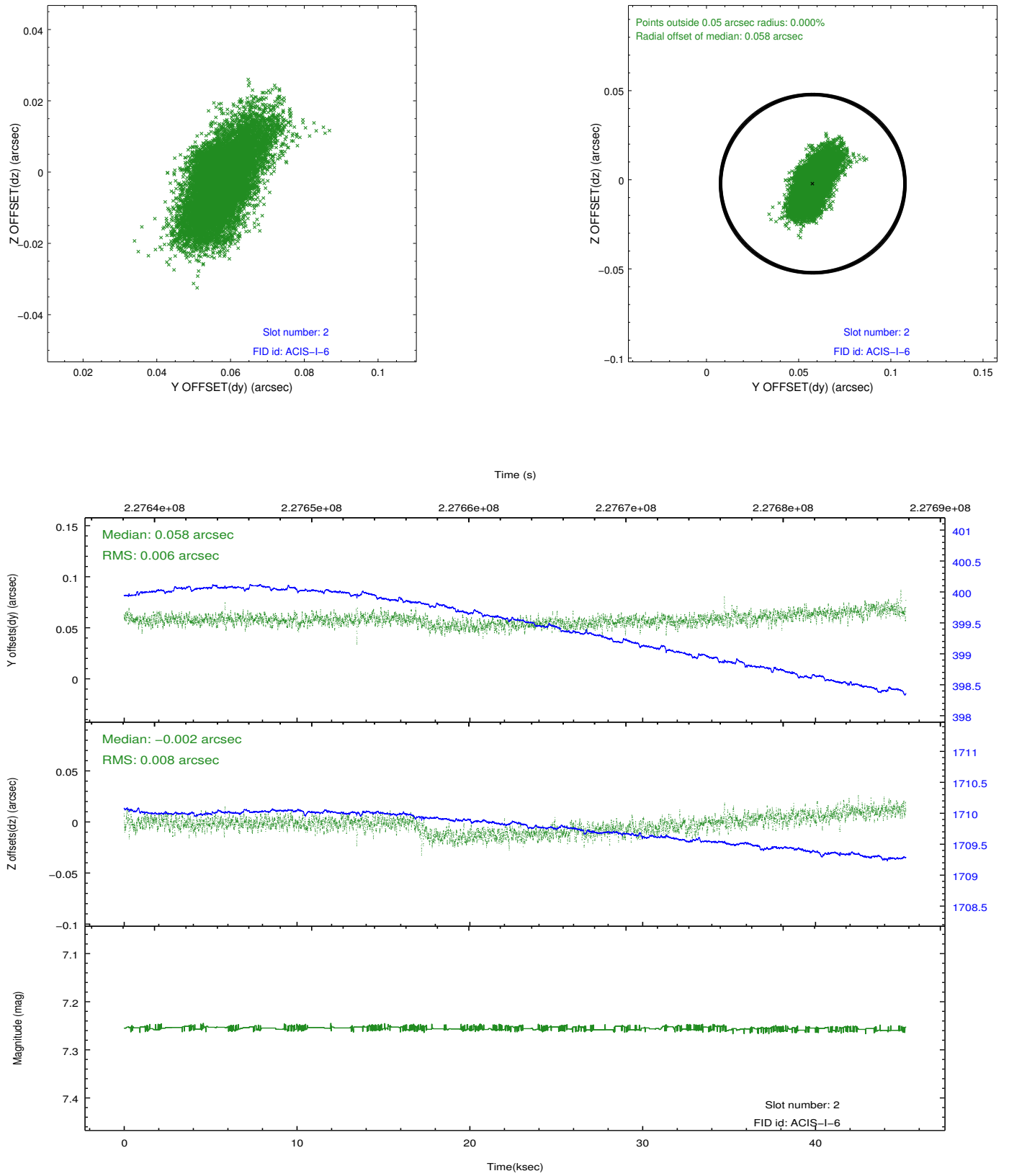
2.5.1 Slot 0



2.5.2 Slot 1



2.5.3 Slot 2



A Summary

A.1 Status

V&V Scientist	Jen Lauer
V&V Date (YYYY-MM-DD)	2013.01.14
V&V Edition	1
V&V Disposition and Status	OK
V&V Charge Time	45.04605

A.2 Comments

Roll constraint satisfied.