

V&V Reference Report

L2 ASCDS Version : 8.4.4

Observation 58253 - L2 Version 2
Chandra X-Ray Center

L2 Processing Date : Apr 29 2012

Contents

| | | |
|----------|-------------------------------|----------|
| 1 | Front | 2 |
| 2 | OBI | 3 |
| 2.1 | OBI | 3 |
| 2.1.1 | Images | 3 |
| 2.1.2 | Bias | 3 |
| 2.1.3 | Parameters | 4 |
| 2.1.4 | Events | 4 |
| 2.2 | Compared Parameters | 5 |
| 2.3 | Star Slots | 6 |
| 2.4 | FID Slots | 6 |
| A | Summary | 7 |
| A.1 | Status | 7 |
| A.2 | Comments | 7 |

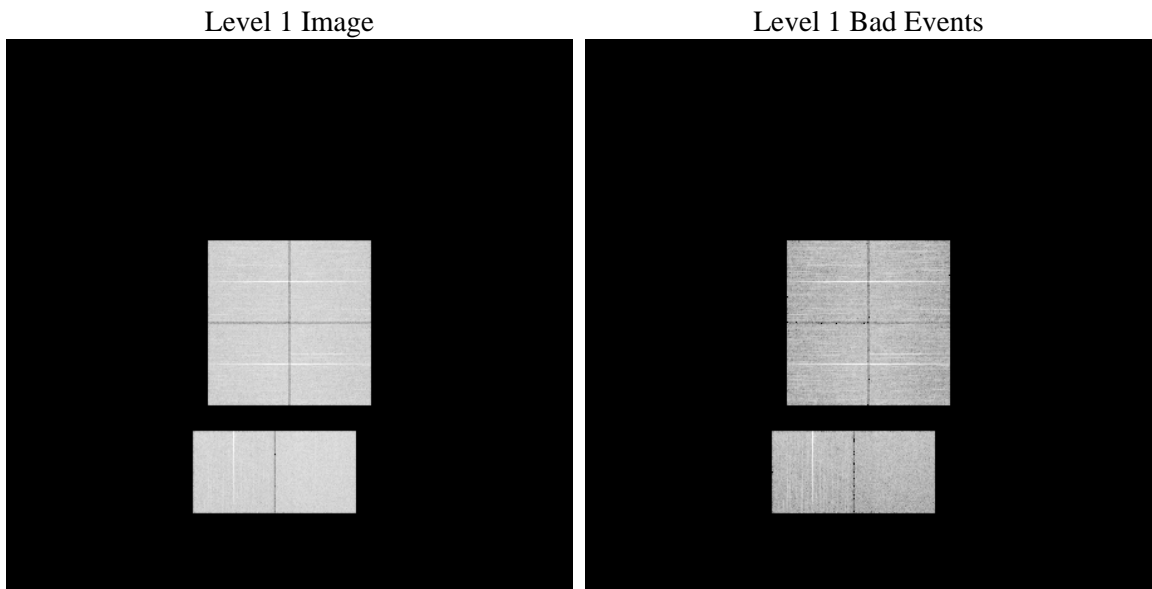
1 Front

| | | |
|----------|---|---|
| seq_num | | Sequence number |
| obs_id | 58253 | Observation id |
| title | ACIS-012367 diagnostics | Proposal title |
| observer | CHANDRA engineering request/realtime commanding | Principal investig |
| object | | Source name |
| dtcycle | 0 | |
| cycle | P | events from which exps? Prim/Second/Both |
| ra_targ | 0.0 | Observer's specified target RA [deg] |
| dec_targ | 0.0 | Observer's specified target Dec [deg] |
| ra_nom | 320.98207620887 | Nominal RA [deg] |
| dec_nom | 14.67709526719 | Nominal Dec [deg] |
| roll_nom | 199.98144522132 | Nominal Roll [deg] |
| revision | 2 | Processing version of data |
| ontime | 8166.1253838539 | Sum of GTIs [s] |
| livetime | 8062.7209871932 | Livetime [s] |
| ontime0 | 8166.0843438506 | Sum of GTIs [s] |
| ontime1 | 8166.0433038473 | Sum of GTIs [s] |
| ontime2 | 8166.002263844 | Sum of GTIs [s] |
| ontime3 | 8166.1664238572 | Sum of GTIs [s] |
| ontime6 | 8165.9612238407 | Sum of GTIs [s] |
| ontime7 | 8166.1253838539 | Sum of GTIs [s] |
| l2events | 686601 | Number of level 2 events |

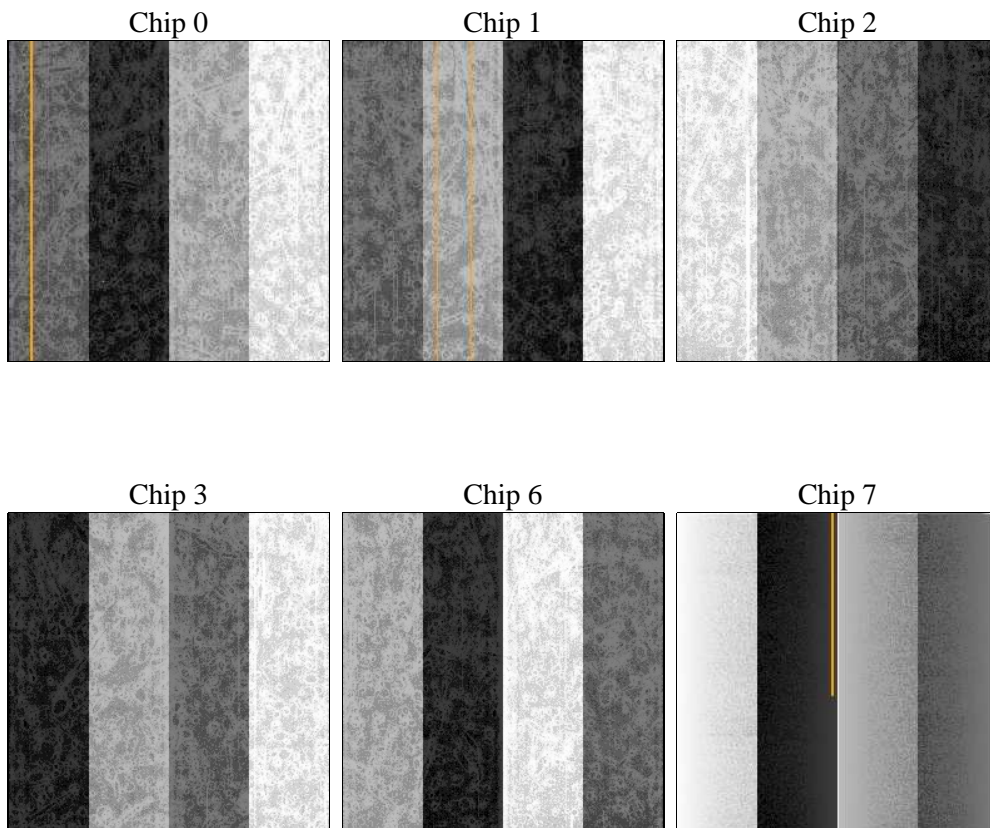
2 OBI

2.1 OBI

2.1.1 Images



2.1.2 Bias



2.1.3 Parameters

| | | | | | |
|----------|---------------------|--------------------------------|----------------|-----------------|---|
| obi_num | 0 | Obi number | sched_exp_time | 0.0 | [s] Scheduled observation exposure time |
| ascdsver | 8.4.4 | Processing system revision | ontime | 8166.1253838539 | Sum of GTIs [s] |
| caldsver | 4.4.9 | | ontime0 | 8166.0843438506 | Sum of GTIs [s] |
| date | 2012-04-30T01:38:45 | Date and time of file creation | ontime1 | 8166.0433038473 | Sum of GTIs [s] |
| revision | 2 | Processing version of data | ontime2 | 8166.002263844 | Sum of GTIs [s] |
| | | | ontime3 | 8166.1664238572 | Sum of GTIs [s] |
| | | | ontime6 | 8165.9612238407 | Sum of GTIs [s] |
| | | | ontime7 | 8166.1253838539 | Sum of GTIs [s] |
| | | | l1events | 1171269 | Number of level 1 events |

2.1.4 Events

| | ccd 0 | ccd 1 | ccd 2 | ccd 3 | ccd 6 | ccd 7 | | ccd 0 | ccd 1 | ccd 2 | ccd 3 | ccd 6 | ccd 7 |
|-----------------|--------|--------|--------|--------|--------|--------|----------------|-------|-------|-------|-------|-------|-------|
| level 1 events | 187867 | 188400 | 193546 | 191917 | 194136 | 215403 | grade 0 events | 62318 | 62064 | 64231 | 64331 | 64300 | 30792 |
| rejected events | 74451 | 73956 | 79087 | 77129 | 75184 | 67285 | | 33% | 32% | 33% | 33% | 33% | 14% |
| rejected % | 39% | 39% | 40% | 40% | 38% | 31% | grade 1 events | 461 | 369 | 500 | 489 | 380 | 153 |
| | | | | | | | | 0% | 0% | 0% | 0% | 0% | 0% |
| | | | | | | | grade 2 events | 20225 | 21311 | 19603 | 19984 | 21205 | 33010 |
| | | | | | | | | 10% | 11% | 10% | 10% | 10% | 15% |
| | | | | | | | grade 3 events | 7625 | 7687 | 7767 | 7966 | 7836 | 14070 |
| | | | | | | | | 4% | 4% | 4% | 4% | 4% | 6% |
| | | | | | | | grade 4 events | 7557 | 7524 | 7691 | 7658 | 7530 | 13953 |
| | | | | | | | | 4% | 3% | 3% | 3% | 3% | 6% |
| | | | | | | | grade 5 events | 4021 | 4037 | 3832 | 4369 | 4228 | 10730 |
| | | | | | | | | 2% | 2% | 1% | 2% | 2% | 4% |
| | | | | | | | grade 6 events | 17138 | 17378 | 16706 | 16384 | 19632 | 58172 |
| | | | | | | | | 9% | 9% | 8% | 8% | 10% | 27% |
| | | | | | | | grade 7 events | 68522 | 68030 | 73216 | 70736 | 69025 | 54523 |
| | | | | | | | | 36% | 36% | 37% | 36% | 35% | 25% |

2.2 Compared Parameters

| Parameter | Planned | Actual | Parameter | Planned | Actual |
|-----------------------------------|---------------------|----------------------|---------------------------------|-----------|---------|
| Instrument | ACIS | ACIS | Obspar format version number | 7 | 7 |
| Detector | ACIS-012367 | ACIS-012367 | Obspar file type | PREDICTED | ACTUAL |
| Grating | NONE | NONE | Obspar update status | NONE | UPDATED |
| Data mode | FAINT | FAINT | On-chip summing requested | N | N |
| Observation mode | SECONDARY | SECONDARY | Subarray requested | NONE | NONE |
| [deg] Pointing RA | 0 | 320.9820762088743 | Alternating exposures requested | N | N |
| [deg] Pointing Dec | 0 | 14.67709526718971 | [s] Primary exposure time | 3.2 | 3.2 |
| [deg] Pointing Roll | 0.0 | 199.9814452213207 | | | |
| [mm] SIM focus pos | -0.782348 | -0.6828225247311905 | | | |
| [mm] SIM defocus | 0 | 0.8505141146731063 | | | |
| [mm] SIM translation stage pos | -233.592463 | 250.466033080201 | | | |
| [mm] SIM translation stage offset | 0 | -0.01005468664627074 | | | |
| [s] Observation start time (MET) | 304116060.514702 | 304116059.48969 | | | |
| Observation start date | 2007-08-21T20:41:01 | 2007-08-21T20:40:59 | | | |
| [s] Observation end time (MET) | 304139992.215853 | 304139991.19084 | | | |
| Observation end date | 2007-08-22T03:19:52 | 2007-08-22T03:19:51 | | | |
| Read mode | TIMED | TIMED | | | |

2.3 Star Slots

2.4 FID Slots

A Summary

A.1 Status

| | |
|----------------------------|-----------------|
| V&V Scientist | Beth Sundheim |
| V&V Date (YYYY-MM-DD) | 2012.05.02 |
| V&V Edition | 1 |
| V&V Disposition and Status | OK |
| V&V Charge Time | 8.1661253838539 |

A.2 Comments