

V&V Reference Report

L2 ASCDS Version : 8.4.4

Observation 58113 - L2 Version 2
Chandra X-Ray Center

L2 Processing Date : May 5 2012

Contents

1	Front	2
2	OBI	3
2.1	OBI	3
2.1.1	Images	3
2.1.2	Bias	3
2.1.3	Parameters	4
2.1.4	Events	4
2.2	Compared Parameters	5
2.3	Star Slots	6
2.4	FID Slots	6
A	Summary	7
A.1	Status	7
A.2	Comments	7

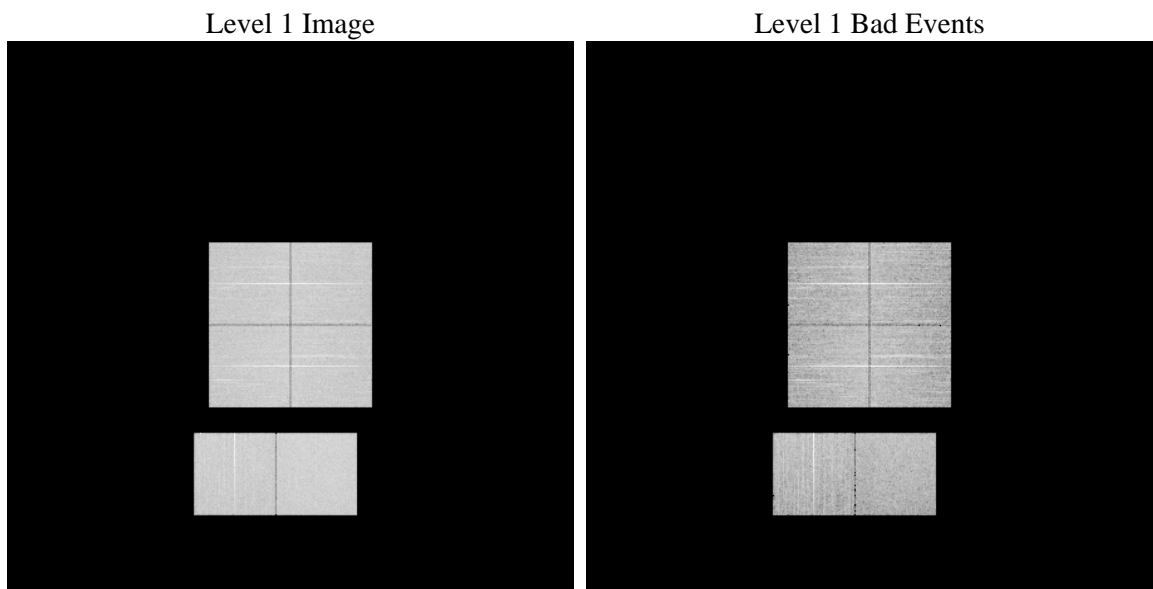
1 Front

seq_num	 	Sequence number
obs_id	58113	Observation id
title	ACIS-012367 diagnostics	Proposal title
observer	CHANDRA engineering request/realtime commanding	Principal investig
object	 	Source name
dtcycle	0	
cycle	P	events from which exps? Prim/Second/Both
ra_targ	0.0	Observer's specified target RA [deg]
dec_targ	0.0	Observer's specified target Dec [deg]
ra_nom	26.016829043628	Nominal RA [deg]
dec_nom	25.972865339531	Nominal Dec [deg]
roll_nom	267.19703214958	Nominal Roll [deg]
revision	2	Processing version of data
ontime	7795.1999710202	Sum of GTIs [s]
livetime	7696.4924552813	Livetime [s]
ontime0	7795.1999710202	Sum of GTIs [s]
ontime1	7795.1999710202	Sum of GTIs [s]
ontime2	7795.1999710202	Sum of GTIs [s]
ontime3	7795.1999710202	Sum of GTIs [s]
ontime6	7795.1999710202	Sum of GTIs [s]
ontime7	7795.1999710202	Sum of GTIs [s]
l2events	635213	Number of level 2 events

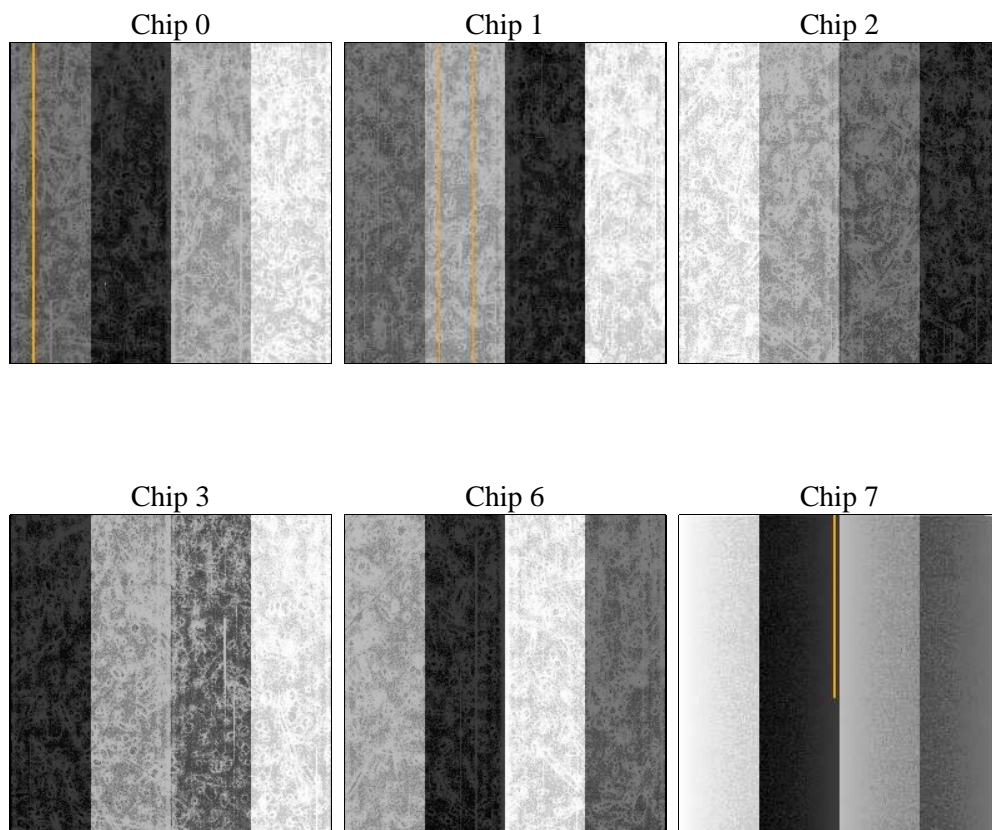
2 OBI

2.1 OBI

2.1.1 Images



2.1.2 Bias



2.1.3 Parameters

obi_num	0	Obi number	sched_exp_time	0.0	[s] Scheduled observation exposure time
ascdsver	8.4.4	Processing system revision	ontime	7795.1999710202	Sum of GTIs [s]
caldsver	4.4.9	 	ontime0	7795.1999710202	Sum of GTIs [s]
date	2012-05-05T06:51:02	Date and time of file creation	ontime1	7795.1999710202	Sum of GTIs [s]
revision	2	Processing version of data	ontime2	7795.1999710202	Sum of GTIs [s]
			ontime3	7795.1999710202	Sum of GTIs [s]
			ontime6	7795.1999710202	Sum of GTIs [s]
			ontime7	7795.1999710202	Sum of GTIs [s]
			l1events	1071998	Number of level 1 events

2.1.4 Events

	ccd 0	ccd 1	ccd 2	ccd 3	ccd 6	ccd 7		ccd 0	ccd 1	ccd 2	ccd 3	ccd 6	ccd 7
level 1 events	170482	169326	177056	175568	181169	198397	grade 0 events	56596	56037	58017	58738	58180	28177
rejected events	65679	63333	71505	69581	70898	61128		33%	33%	32%	33%	32%	14%
rejected %	38%	37%	40%	39%	39%	30%	grade 1 events	379	361	455	474	338	142
								0%	0%	0%	0%	0%	0%
							grade 2 events	18701	19943	17815	18034	19741	30088
								10%	11%	10%	10%	10%	15%
							grade 3 events	6810	6854	7090	7039	6910	13018
								3%	4%	4%	4%	3%	6%
							grade 4 events	6899	6775	7055	7022	6947	12355
								4%	4%	3%	3%	3%	6%
							grade 5 events	3476	3704	3364	3959	3969	9952
								2%	2%	1%	2%	2%	5%
							grade 6 events	15797	16384	15574	15154	18493	53631
								9%	9%	8%	8%	10%	27%
							grade 7 events	61824	59268	67686	65148	66591	51034
								36%	35%	38%	37%	36%	25%

2.2 Compared Parameters

Parameter	Planned	Actual
Instrument	ACIS	ACIS
Detector	ACIS-012367	ACIS-012367
Grating	NONE	NONE
Data mode	FAINT	FAINT
Observation mode	SECONDARY	SECONDARY
[deg] Pointing RA	0	26.01682904362839
[deg] Pointing Dec	0	25.97286533953055
[deg] Pointing Roll	0.0	267.1970321495809
[mm] SIM focus pos	-0.782348	-0.6828225247311905
[mm] SIM defocus	0	0.8505141146731063
[mm] SIM translation stage pos	-233.592463	250.466033080201
[mm] SIM translation stage offset	0	-0.01005468664627074
[s] Observation start time (MET)	312302297.20916	312302296.18417
Observation start date	2007-11-24T14:38:17	2007-11-24T14:38:16
[s] Observation end time (MET)	312317559.459897	312317558.43491
Observation end date	2007-11-24T18:52:39	2007-11-24T18:52:38
Read mode	TIMED	TIMED

Parameter	Planned	Actual
Obspar format version number	7	7
Obspar file type	PREDICTED	ACTUAL
Obspar update status	NONE	UPDATED
On-chip summing requested	N	N
Subarray requested	NONE	NONE
Alternating exposures requested	N	N
[s] Primary exposure time	3.2	3.2

2.3 Star Slots

2.4 FID Slots

A Summary

A.1 Status

V&V Scientist	Jen Lauer
V&V Date (YYYY-MM-DD)	2012.05.07
V&V Edition	1
V&V Disposition and Status	OK
V&V Charge Time	7.7951999710202

A.2 Comments