

V&V Reference Report

L2 ASCDS Version : 8.4.4

Observation 58033 - L2 Version 2
Chandra X-Ray Center

L2 Processing Date : May 7 2012

Contents

1	Front	2
2	OBI	3
2.1	OBI	3
2.1.1	Images	3
2.1.2	Bias	3
2.1.3	Parameters	4
2.1.4	Events	4
2.2	Compared Parameters	5
2.3	Star Slots	6
2.4	FID Slots	6
A	Summary	7
A.1	Status	7
A.2	Comments	7

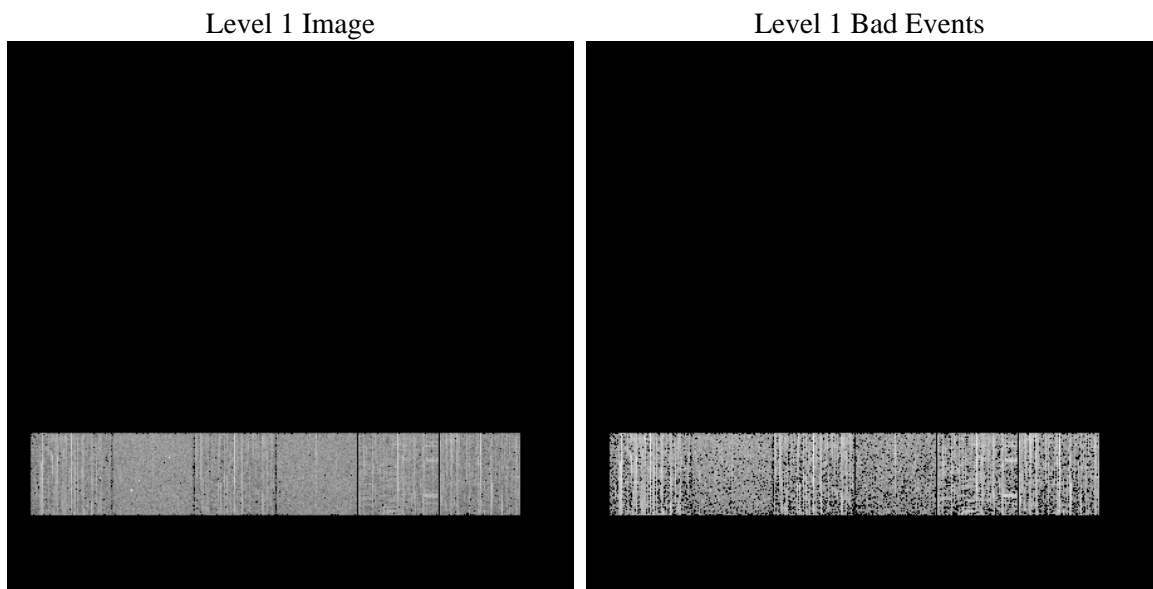
1 Front

seq_num	 	Sequence number
obs_id	58033	Observation id
title	ACIS-456789 diagnostics	Proposal title
observer	CHANDRA engineering request/realtime commanding	Principal investig
object	 	Source name
dtcycle	0	
cycle	P	events from which exps? Prim/Second/Both
ra_targ	0.0	Observer's specified target RA [deg]
dec_targ	0.0	Observer's specified target Dec [deg]
ra_nom	117.0143338083	Nominal RA [deg]
dec_nom	0.025738667839638	Nominal Dec [deg]
roll_nom	29.412102812223	Nominal Roll [deg]
revision	2	Processing version of data
ontime	1062.1324799061	Sum of GTIs [s]
livetime	1048.6831189061	Livetime [s]
ontime4	929.12885683775	Sum of GTIs [s]
ontime5	1062.0914399028	Sum of GTIs [s]
ontime6	978.78675299883	Sum of GTIs [s]
ontime7	1062.1324799061	Sum of GTIs [s]
ontime8	990.66657286882	Sum of GTIs [s]
ontime9	942.25700777769	Sum of GTIs [s]
l2events	85783	Number of level 2 events

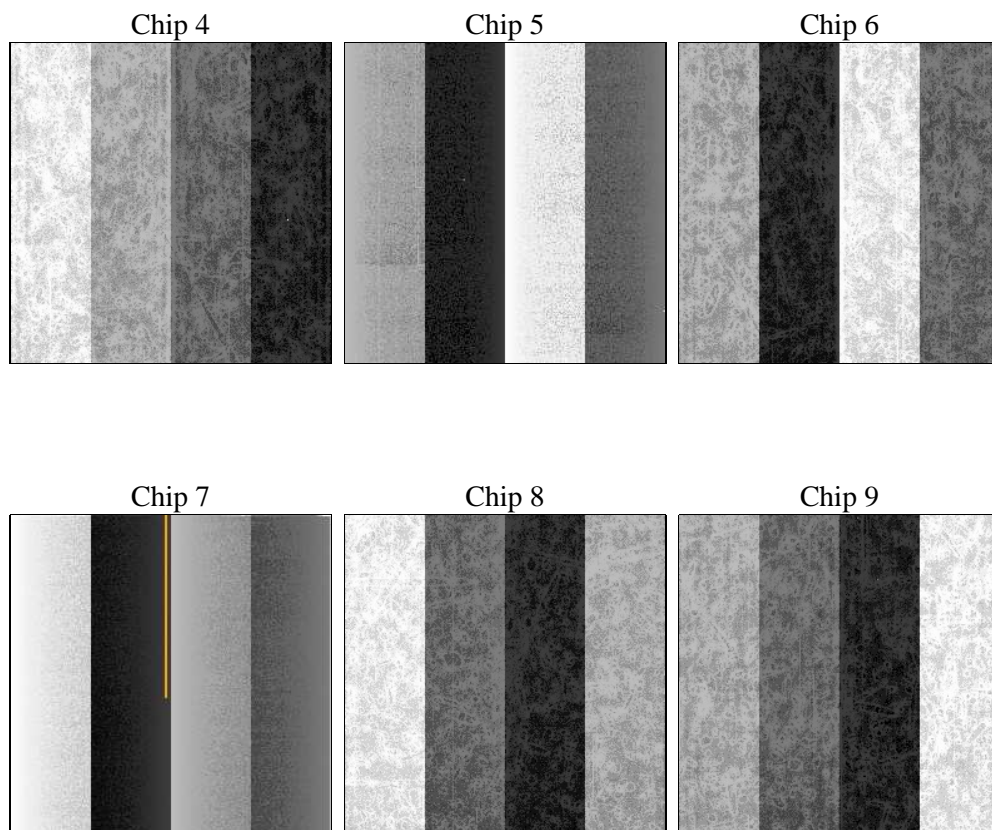
2 OBI

2.1 OBI

2.1.1 Images



2.1.2 Bias



2.1.3 Parameters

obi_num	0	Obi number	sched_exp_time	0.0	[s] Scheduled observation exposure time
ascdsver	8.4.4	Processing system revision	ontime	1062.1324799061	Sum of GTIs [s]
caldsver	4.4.9	 	ontime4	929.12885683775	Sum of GTIs [s]
date	2012-05-07T17:04:41	Date and time of file creation	ontime5	1062.0914399028	Sum of GTIs [s]
revision	2	Processing version of data	ontime6	978.78675299883	Sum of GTIs [s]
			ontime7	1062.1324799061	Sum of GTIs [s]
			ontime8	990.66657286882	Sum of GTIs [s]
			ontime9	942.25700777769	Sum of GTIs [s]
			l1events	211937	Number of level 1 events

2.1.4 Events

	ccd 4	ccd 5	ccd 6	ccd 7	ccd 8	ccd 9		ccd 4	ccd 5	ccd 6	ccd 7	ccd 8	ccd 9
level 1 events	37253	32864	35966	31350	38343	36161	grade 0 events	6960	3358	7112	3826	7883	6676
rejected events	24733	13373	22351	11869	22888	23582		18%	10%	19%	12%	20%	18%
rejected %	66%	40%	62%	37%	59%	65%	grade 1 events	70	74	45	24	61	55
								0%	0%	0%	0%	0%	0%
							grade 2 events	2207	7420	2543	4748	2872	2269
								5%	22%	7%	15%	7%	6%
							grade 3 events	853	918	837	1736	1012	800
								2%	2%	2%	5%	2%	2%
							grade 4 events	858	873	896	1723	1023	802
								2%	2%	2%	5%	2%	2%
							grade 5 events	496	1259	599	1445	678	554
								1%	3%	1%	4%	1%	1%
							grade 6 events	1642	6922	2227	7448	2665	2032
								4%	21%	6%	23%	6%	5%
							grade 7 events	24167	12040	21707	10400	22149	22973
								64%	36%	60%	33%	57%	63%

2.2 Compared Parameters

Parameter	Planned	Actual	Parameter	Planned	Actual
Instrument	ACIS	ACIS	Obspar format version number	7	7
Detector	ACIS-456789	ACIS-456789	Obspar file type	PREDICTED	ACTUAL
Grating	NONE	NONE	Obspar update status	NONE	UPDATED
Data mode	FAINT	FAINT	On-chip summing requested	N	N
Observation mode	SECONDARY	SECONDARY	Subarray requested	NONE	NONE
[deg] Pointing RA	0	117.0143338082997	Alternating exposures requested	N	N
[deg] Pointing Dec	0	0.02573866783963797	[s] Primary exposure time	3.2	3.2
[deg] Pointing Roll	0.0	29.4121028122226			
[mm] SIM focus pos	-0.684267	-0.6828225247311905			
[mm] SIM defocus	0	0.8505141146731063			
[mm] SIM translation stage pos	-190.132523	250.466033080201			
[mm] SIM translation stage offset	0	-0.01005468664627074			
[s] Observation start time (MET)	315734089.625116	315734088.60013			
Observation start date	2008-01-03T07:54:50	2008-01-03T07:54:48			
[s] Observation end time (MET)	315761844.576459	315761843.55147			
Observation end date	2008-01-03T15:37:25	2008-01-03T15:37:23			
Read mode	TIMED	TIMED			

2.3 Star Slots

2.4 FID Slots

A Summary

A.1 Status

V&V Scientist	Beth Sundheim
V&V Date (YYYY-MM-DD)	2012.05.09
V&V Edition	1
V&V Disposition and Status	OK
V&V Charge Time	1.0621324799061

A.2 Comments