

V&V Reference Report

L2 ASCDS Version : 8.5.1.1

Observation 5803 - L2 Version 3
Chandra X-Ray Center

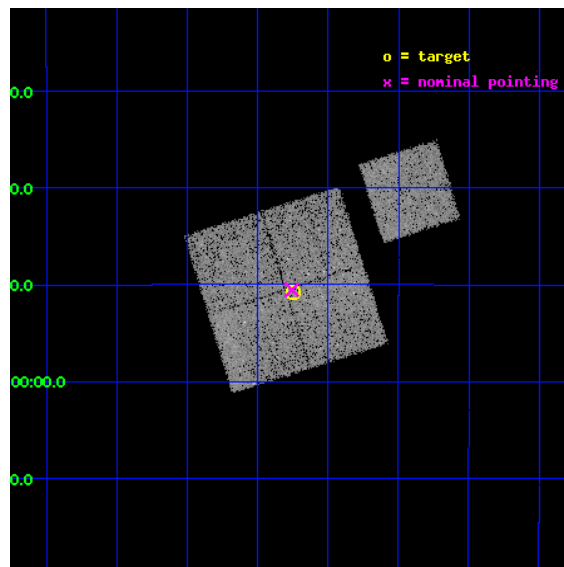
L2 Processing Date : Dec 20 2012

Contents

1	Front	2
2	OBI	3
2.1	OBI	3
2.1.1	Images	3
2.1.2	Bias	3
2.1.3	Parameters	4
2.1.4	Events	4
2.2	Compared Parameters	5
2.3	Aspect	6
2.4	Star Slots	9
2.4.1	Slot 3	9
2.4.2	Slot 4	10
2.4.3	Slot 5	11
2.4.4	Slot 6	12
2.4.5	Slot 7	13
2.5	FID Slots	14
2.5.1	Slot 0	14
2.5.2	Slot 1	15
2.5.3	Slot 2	16
A	Summary	17
A.1	Status	17
A.2	Comments	17

1 Front

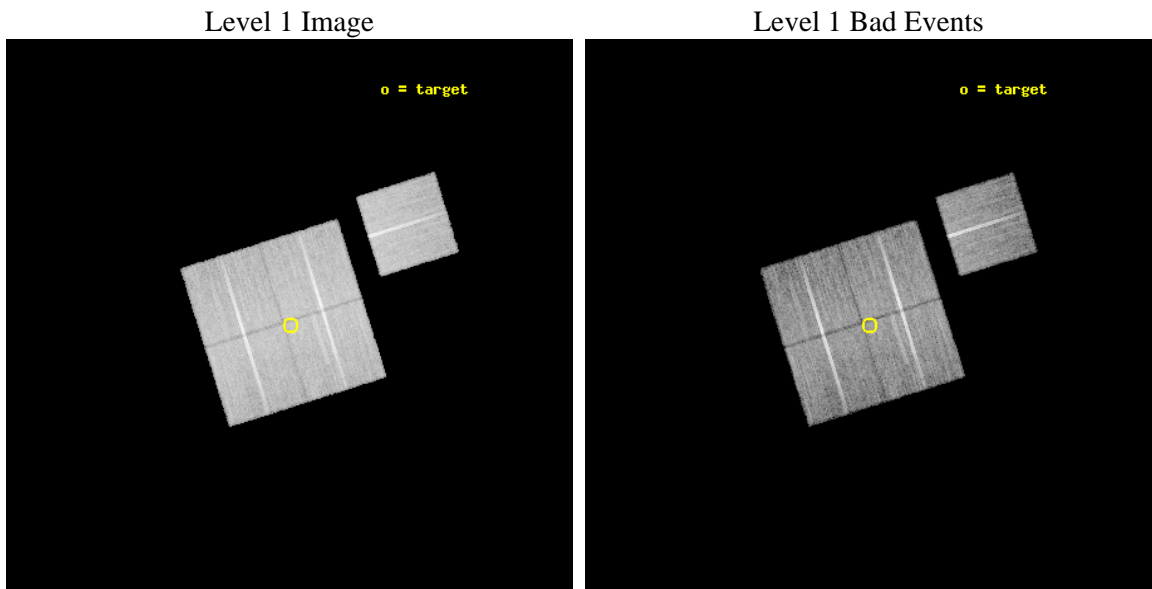
seq_num	800516	Sequence number
obs_id	5803	Observation id
title	Chandra Observations of the DLS Shear-Selected Cluster Survey	Prop
observer	Prof. John Hughes	Principal investigator
object	DLS J1402-1052	Source name
dtcycle	0	
cycle	P	events from which exps? Prim/Second/Both
ra_targ	210.56125	Observer's specified target RA [deg]
dec_targ	-10.845833	Observer's specified target Dec [deg]
ra_nom	210.56429369446	Nominal RA [deg]
dec_nom	-10.842267661937	Nominal Dec [deg]
roll_nom	72.61523265036	Nominal Roll [deg]
revision	3	Processing version of data
ontime	21048.958959341	Sum of GTIs [s]
livetime	20773.938814519	Livetime [s]
ontime0	21042.583812386	Sum of GTIs [s]
ontime1	21052.047833055	Sum of GTIs [s]
ontime2	21048.947872907	Sum of GTIs [s]
ontime3	21048.958959341	Sum of GTIs [s]
ontime6	21051.965753049	Sum of GTIs [s]
l2events	55749	Number of level 2 events



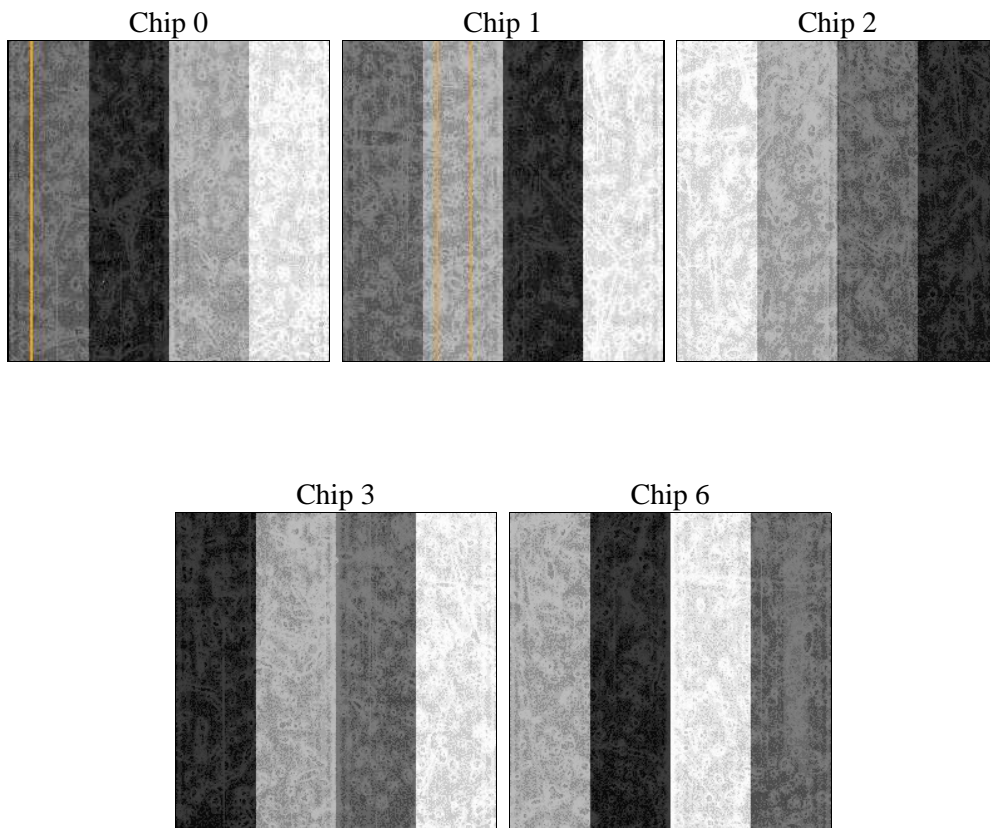
2 OBI

2.1 OBI

2.1.1 Images



2.1.2 Bias



2.1.3 Parameters

obi_num	0	Obi number	sched_exp_time	21000.000000	[s] Scheduled observation exposure time
ascdsver	8.5.1.1	Processing system revision	ontime	21048.958959341	Sum of GTIs [s]
caldsver	4.5.5	 	ontime0	21042.583812386	Sum of GTIs [s]
date	2012-12-20T20:29:56	Date and time of file creation	ontime1	21052.047833055	Sum of GTIs [s]
revision	3	Processing version of data	ontime2	21048.947872907	Sum of GTIs [s]
			ontime3	21048.958959341	Sum of GTIs [s]
			ontime6	21051.965753049	Sum of GTIs [s]
			l1events	645769	Number of level 1 events

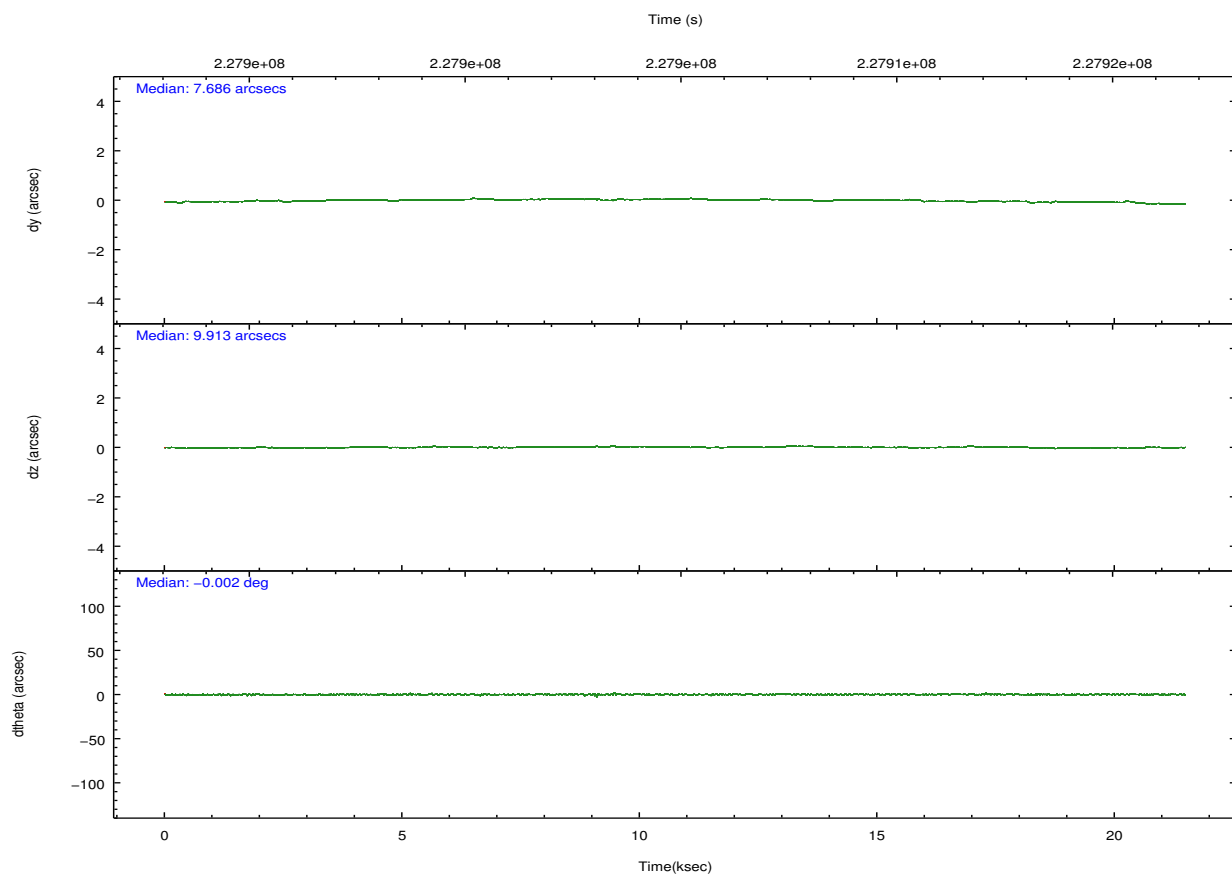
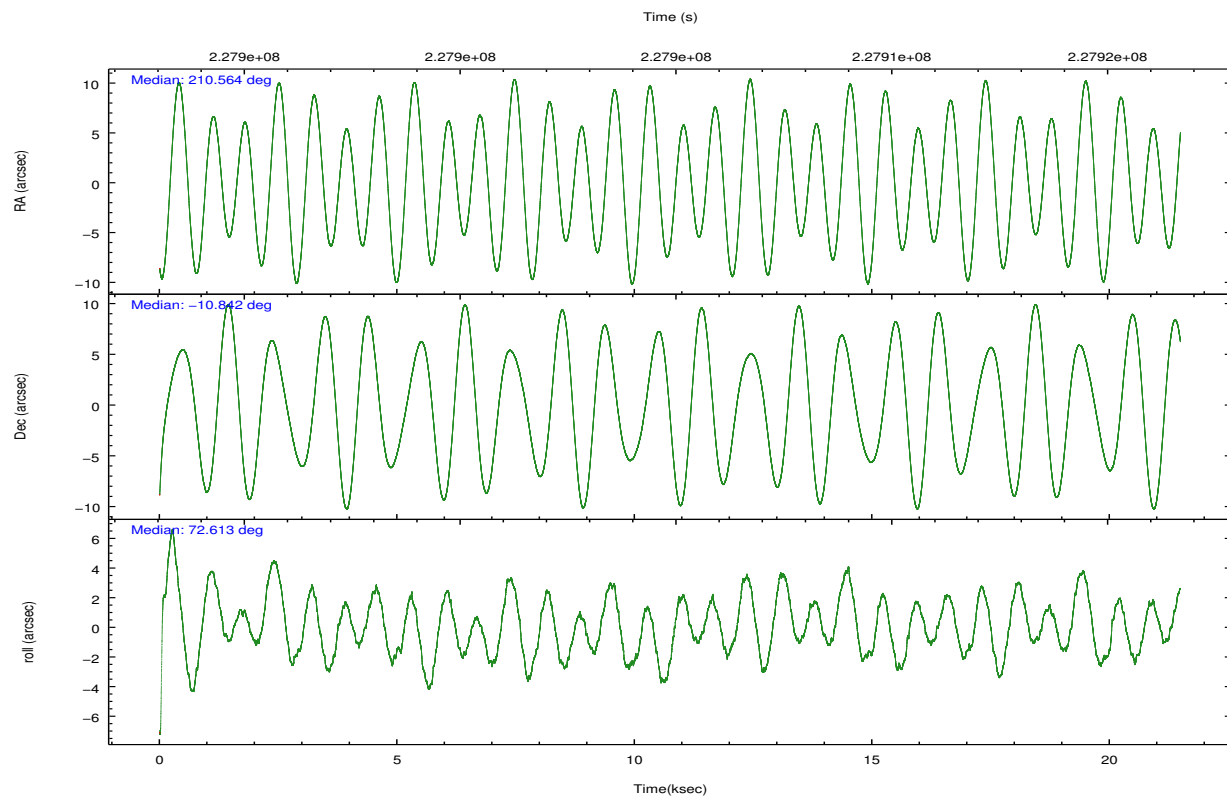
2.1.4 Events

	ccd 0	ccd 1	ccd 2	ccd 3	ccd 6		ccd 0	ccd 1	ccd 2	ccd 3	ccd 6
level 1 events	122726	123785	136274	133814	129170	grade 0 events	4426	5428	4913	4684	4713
rejected events	109780	108957	123193	121057	115863		3%	4%	3%	3%	3%
rejected %	89%	88%	90%	90%	89%	grade 1 events	78	74	59	85	56
							0%	0%	0%	0%	0%
						grade 2 events	3146	3242	3036	2720	2879
							2%	2%	2%	2%	2%
						grade 3 events	1502	1666	1459	1443	1508
							1%	1%	1%	1%	1%
						grade 4 events	1428	1617	1398	1484	1441
							1%	1%	1%	1%	1%
						grade 5 events	4520	4944	4577	5337	5274
							3%	3%	3%	3%	4%
						grade 6 events	2449	2877	2278	2430	2770
							1%	2%	1%	1%	2%
						grade 7 events	105177	103937	118554	115631	110529
							85%	83%	86%	86%	85%

2.2 Compared Parameters

Parameter	Planned	Actual	Parameter	Planned	Actual
Instrument	ACIS	ACIS	Obspar format version number	7	7
Detector	ACIS-01236	ACIS-01236	Obspar file type	PREDICTED	ACTUAL
Grating	NONE	NONE	Obspar update status	NONE	UPDATED
Data mode	VFAINT	VFAINT	Number of optional ACIS chips dropped	0	0
Observation mode	POINTING	POINTING	On-chip summing requested	N	N
[deg] Pointing RA	210.570507	210.5642936944632	Subarray requested	NONE	NONE
[deg] Pointing Dec	-10.868990	-10.84226766193731	Alternating exposures requested	N	N
[deg] Pointing Roll	72.407725	72.61523265036047	[s] Primary exposure time	0.000000	3.1
[mm] SIM focus pos	-0.782348	-0.7809083437167272			
[mm] SIM defocus	0	0.001439871863259334			
[mm] SIM translation stage pos	-233.592463	-233.5874344608287			
[mm] SIM translation stage offset	0	-0.005018542100998502			
[s] Observation start time (MET)	227894612.184000	227893529.92714			
Observation start date	2005-03-22T16:02:28	2005-03-22T15:45:29			
[s] Observation end time (MET)	227915612.184000	227916166.54067			
Observation end date	2005-03-22T21:52:28	2005-03-22T22:02:46			
Read mode	TIMED	TIMED			

2.3 Aspect

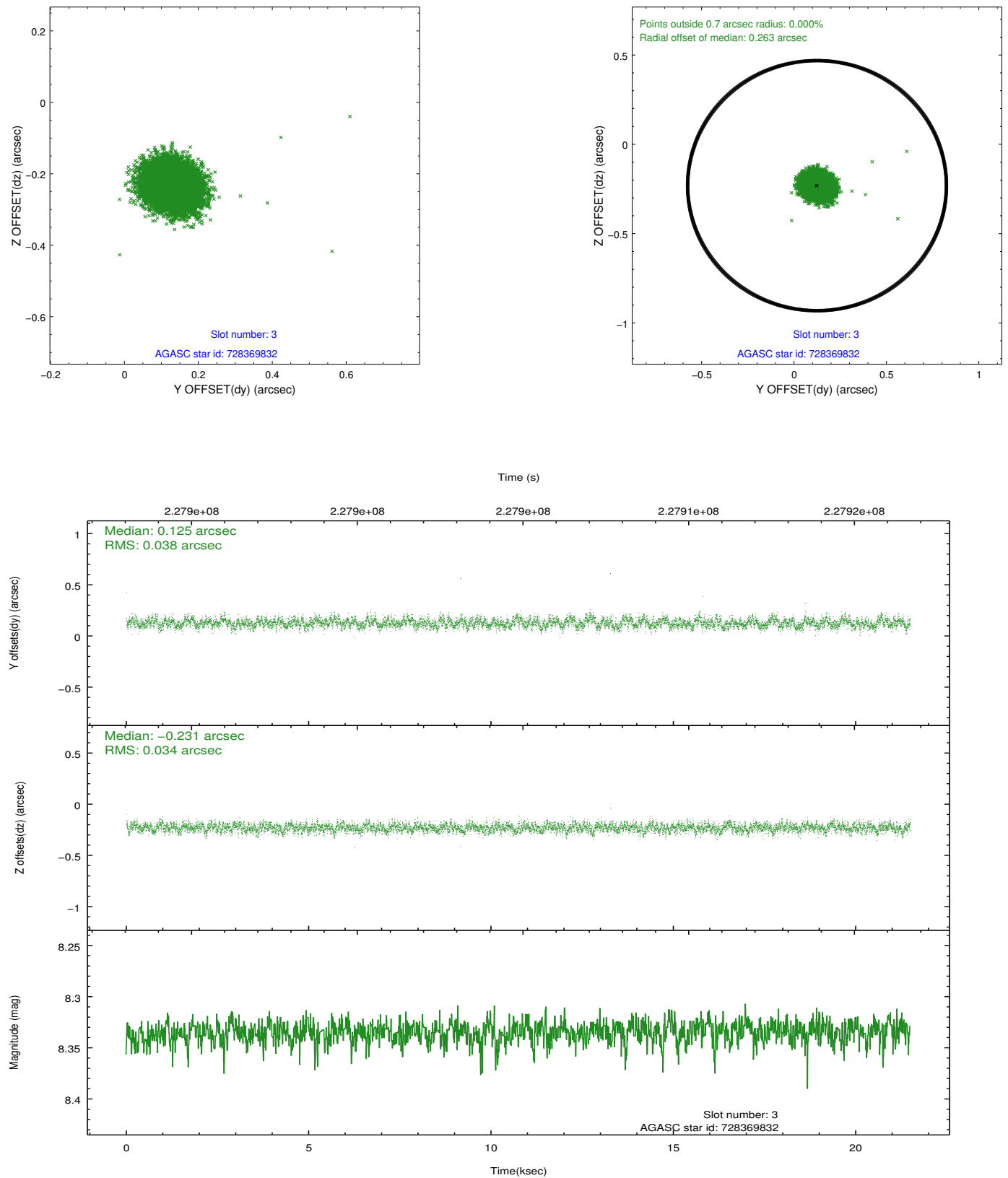


Slot Statistics

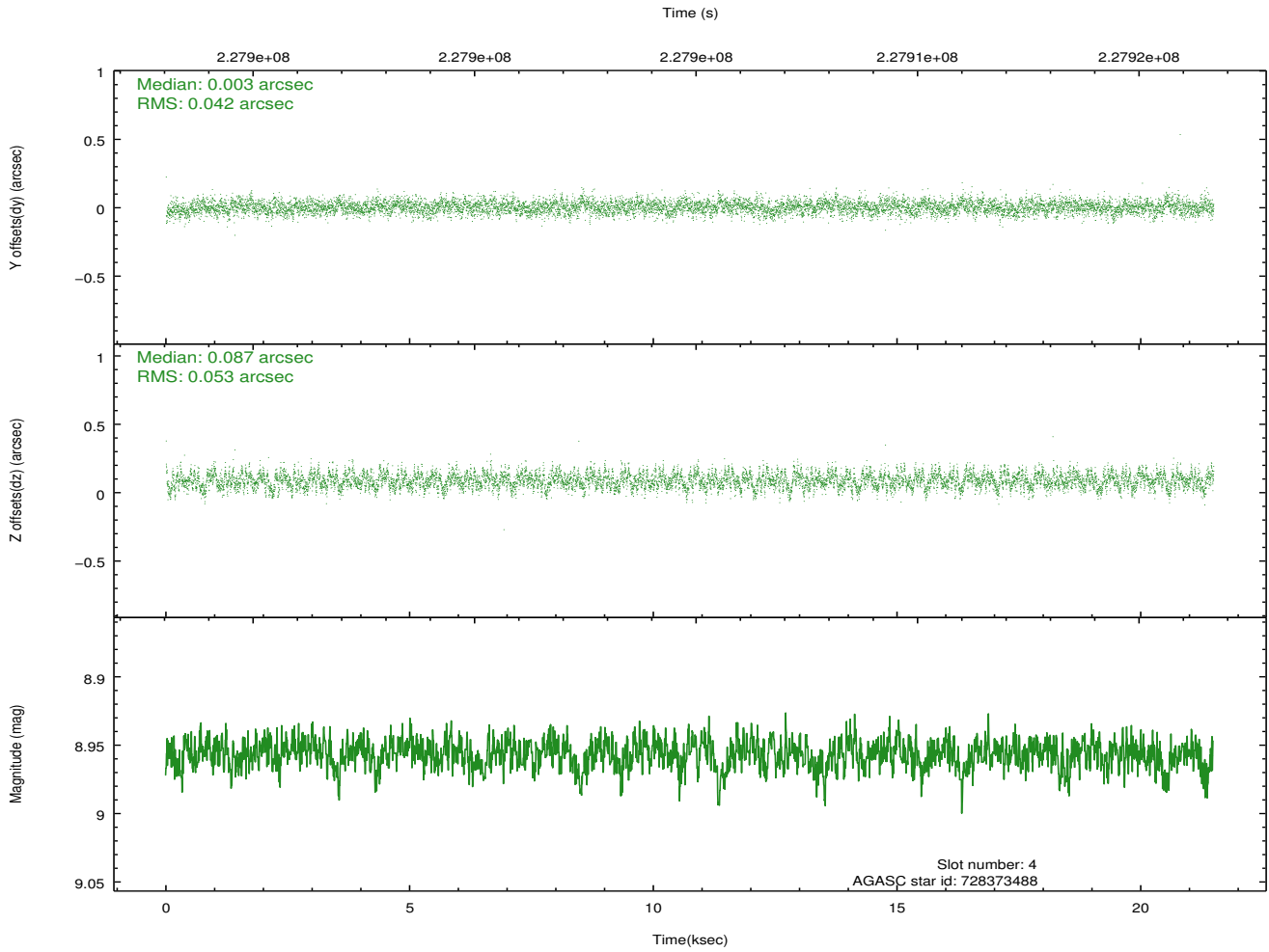
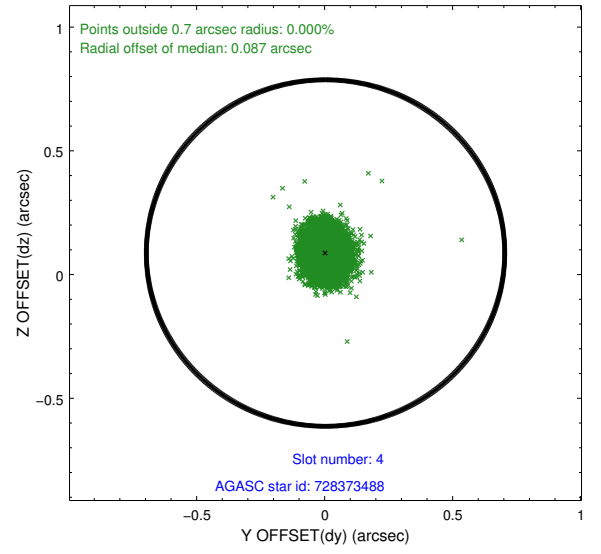
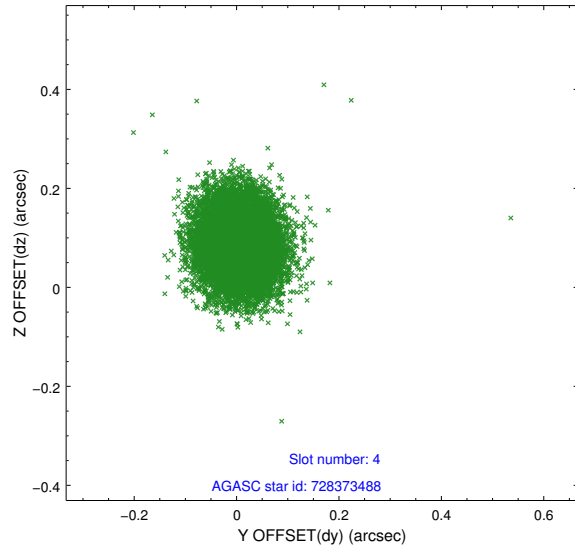
slot	status	id	mag	n_pts	med_dy	med_dz	dr1	dr2	ra	dec	mean_y	mean_z
0	FID	ACIS-I-1	7.24	5243	0.009	0.016	0.007	0.012	0.000000	0.000000	932.00	-833.36
1	FID	ACIS-I-5	7.23	5243	-0.168	0.027	0.006	0.011	0.000000	0.000000	-1816.19	1064.05
2	FID	ACIS-I-6	7.25	5242	0.069	0.027	0.007	0.011	0.000000	0.000000	397.42	1708.74
3	GUIDE	728369832	8.34	10485	0.125	-0.231	0.054	0.087	210.251544	-11.309313	-1851.62	593.89
4	GUIDE	728373488	8.96	10482	0.003	0.087	0.072	0.115	210.737272	-10.465613	1562.65	-123.49
5	GUIDE	728376288	9.03	10475	-0.103	-0.145	0.078	0.126	210.308344	-10.377325	1406.43	1419.63
6	GUIDE	728377784	7.89	10484	-0.013	0.138	0.051	0.084	210.974476	-11.272975	-955.73	-1799.06
7	GUIDE	728373224	9.13	10481	-0.012	0.158	0.086	0.139	211.096147	-11.494941	-1589.01	-2449.17

2.4 Star Slots

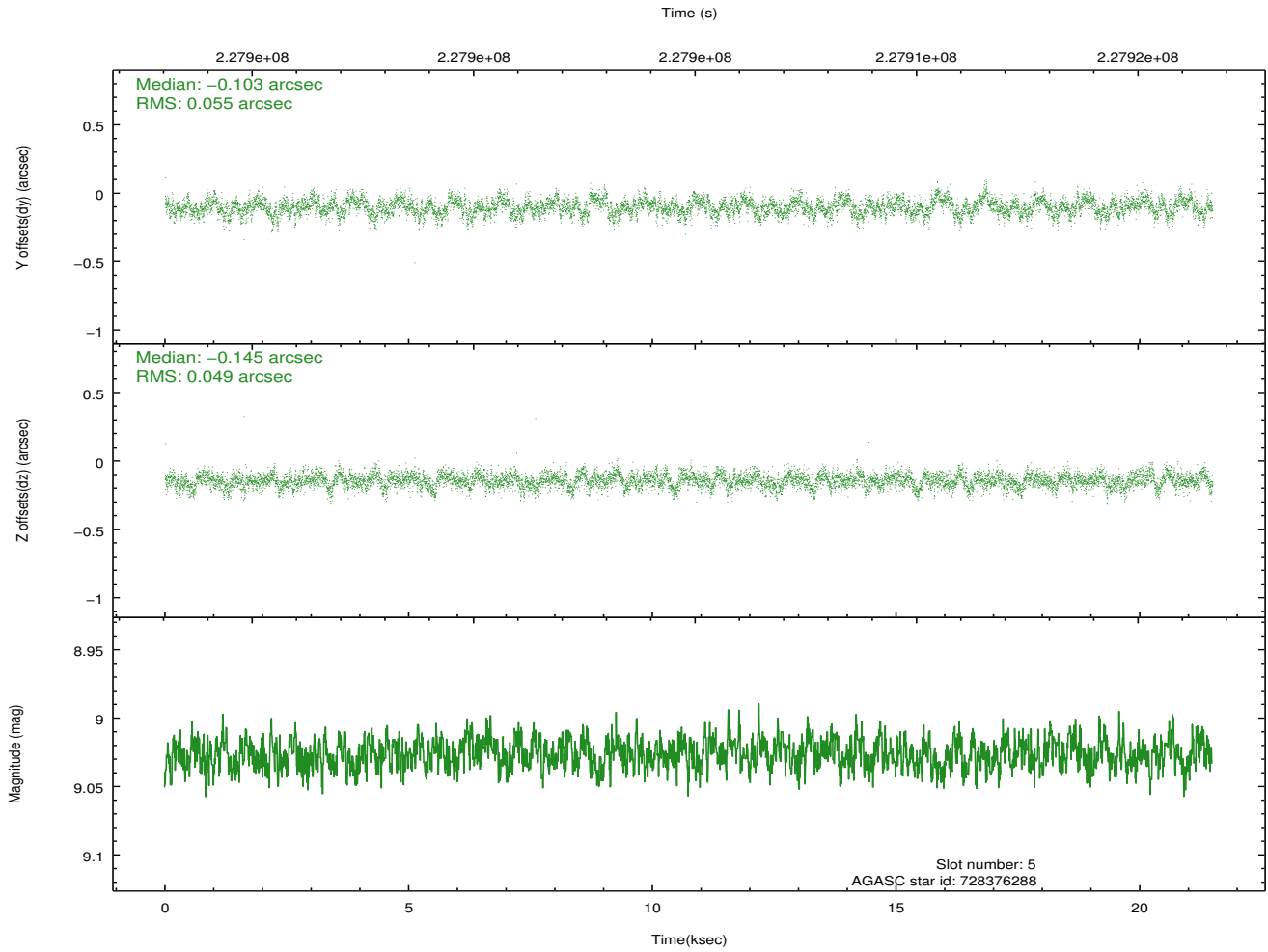
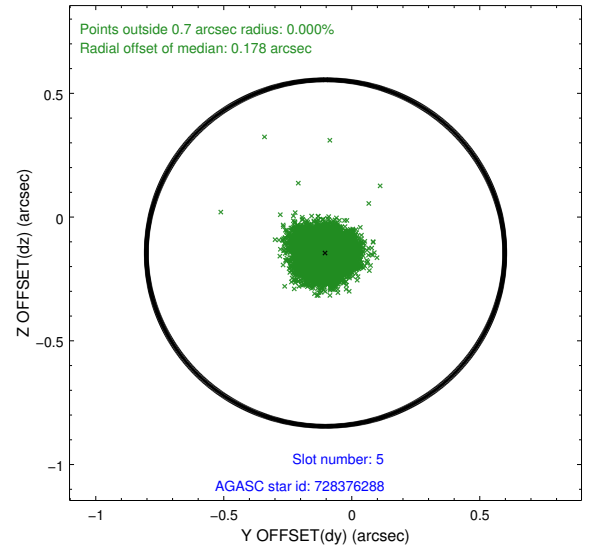
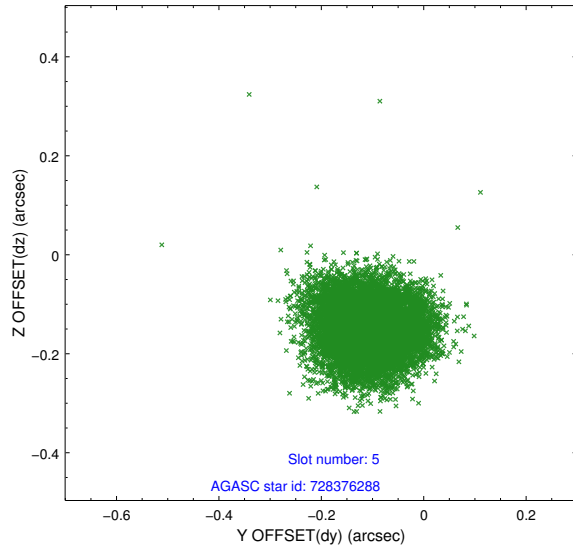
2.4.1 Slot 3



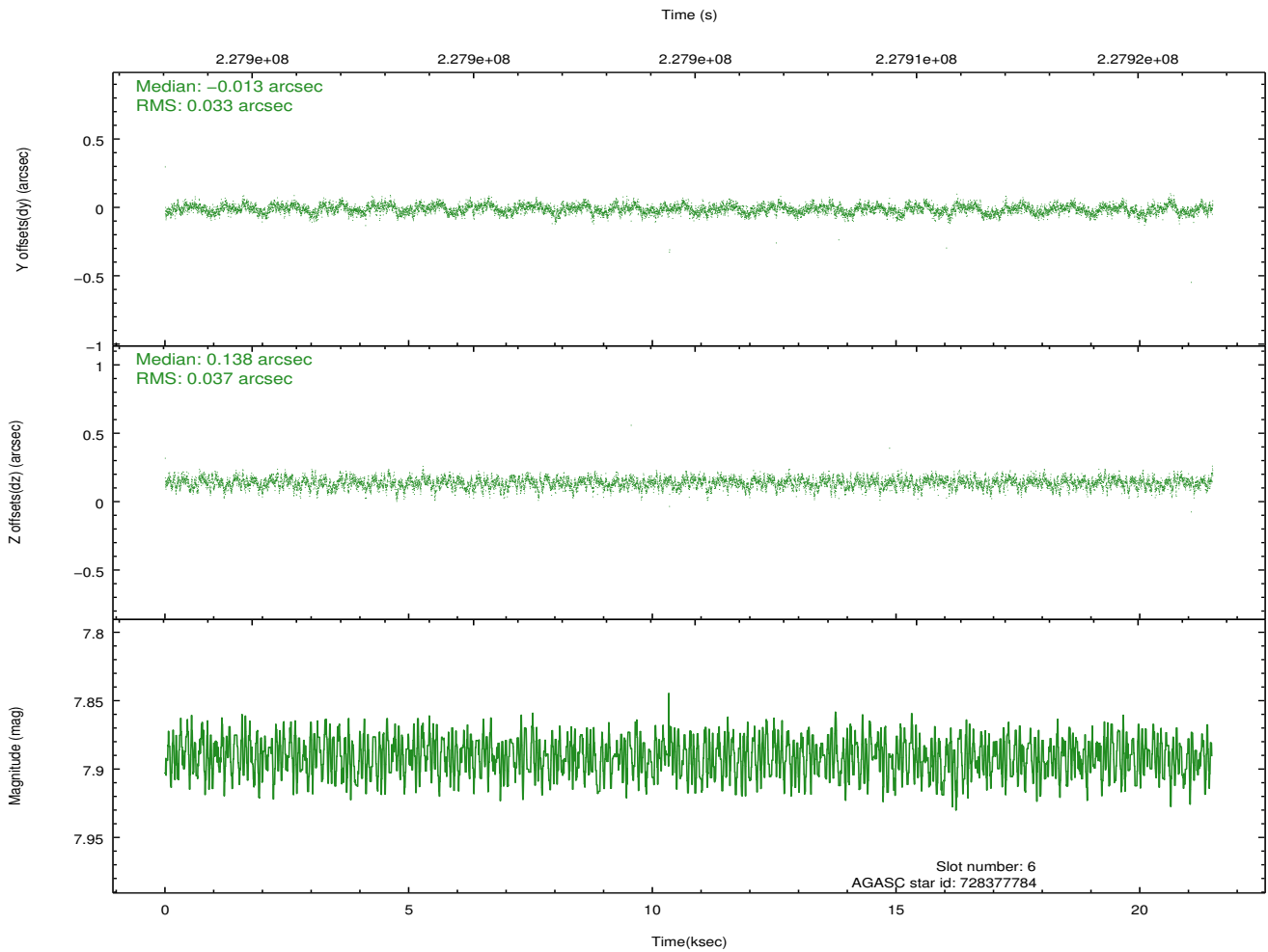
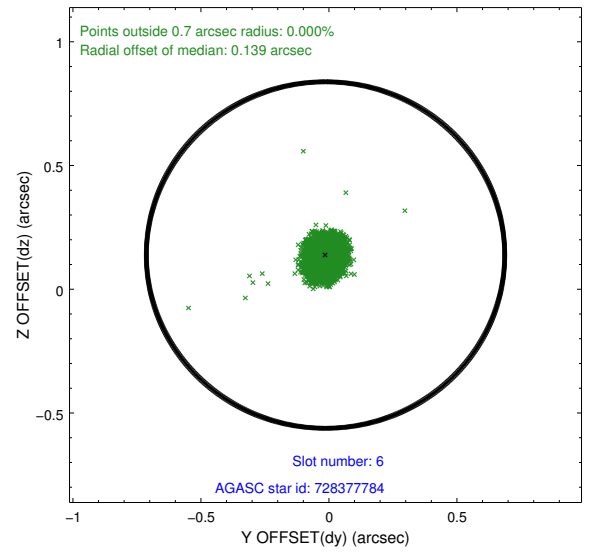
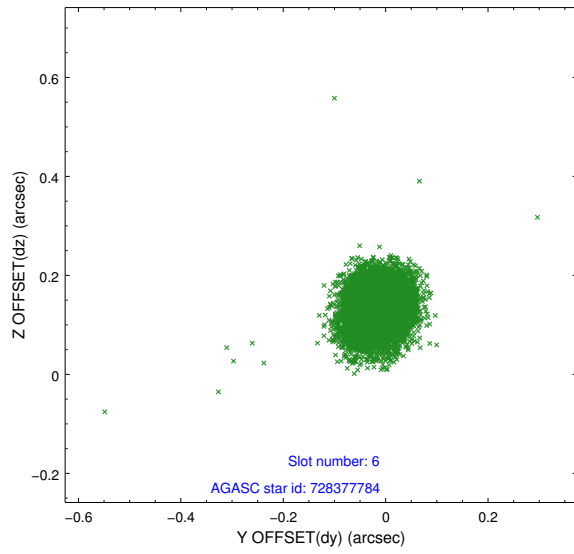
2.4.2 Slot 4



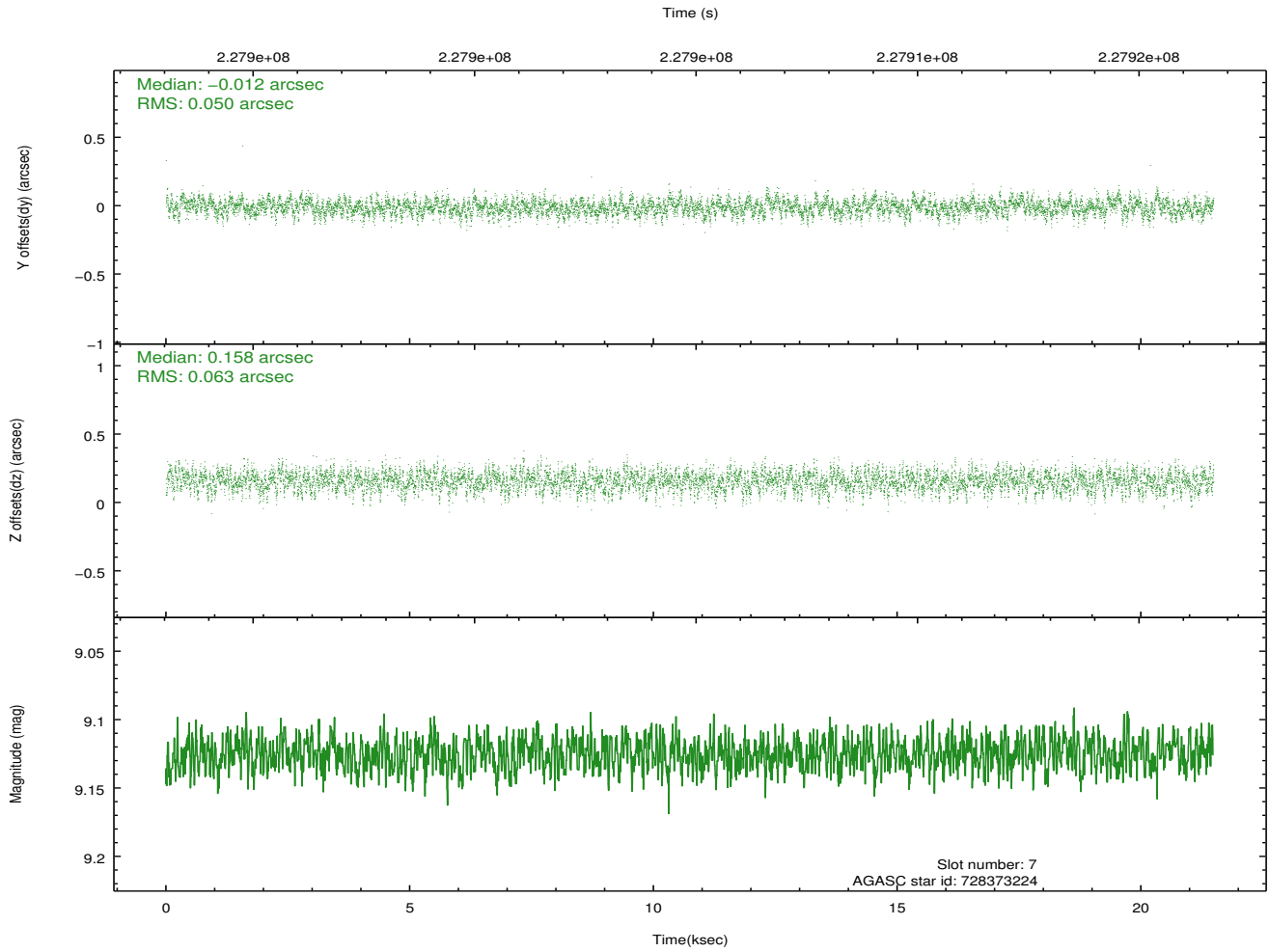
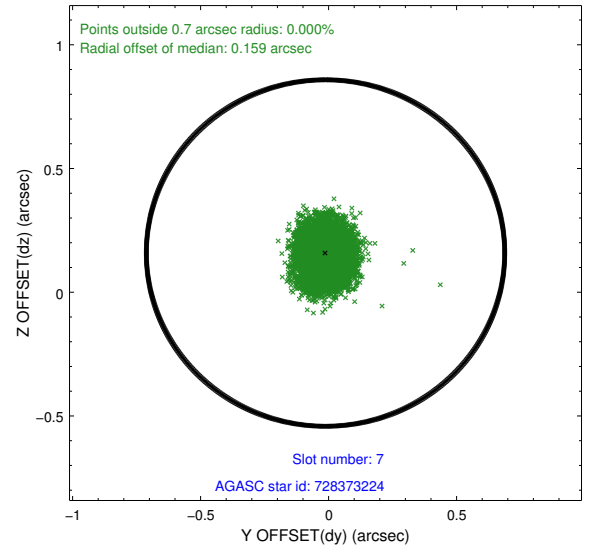
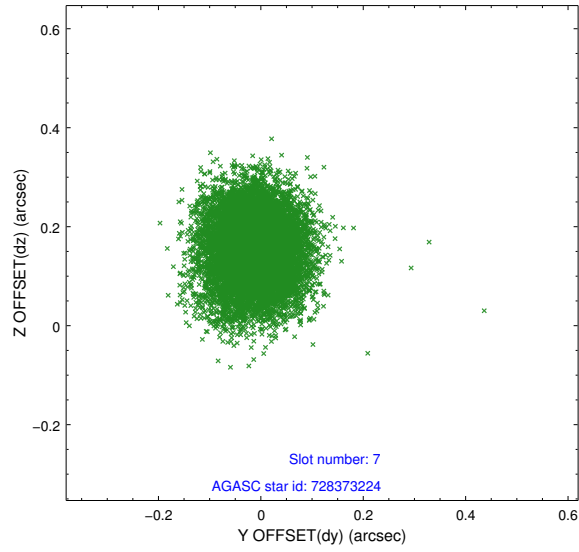
2.4.3 Slot 5



2.4.4 Slot 6

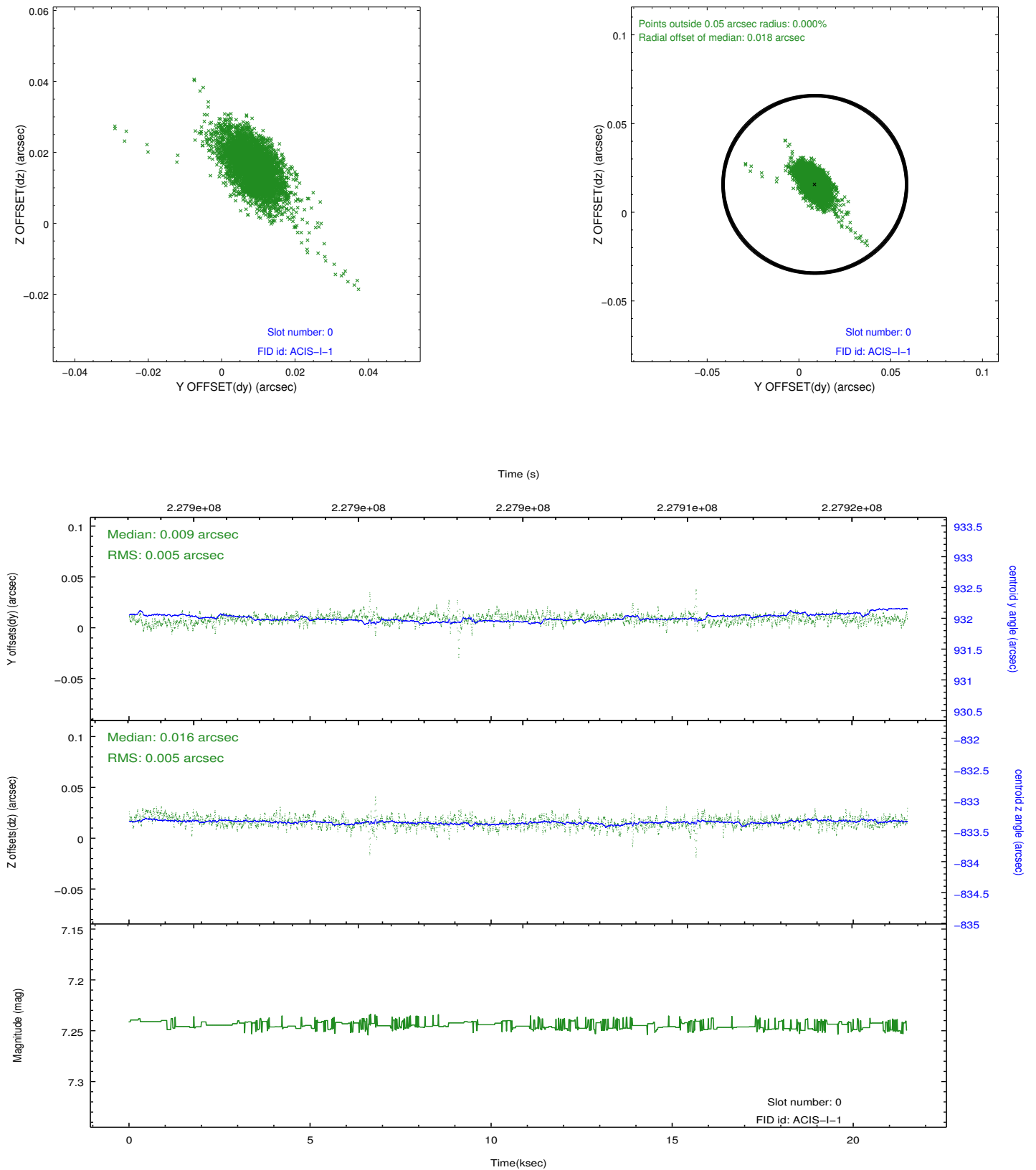


2.4.5 Slot 7

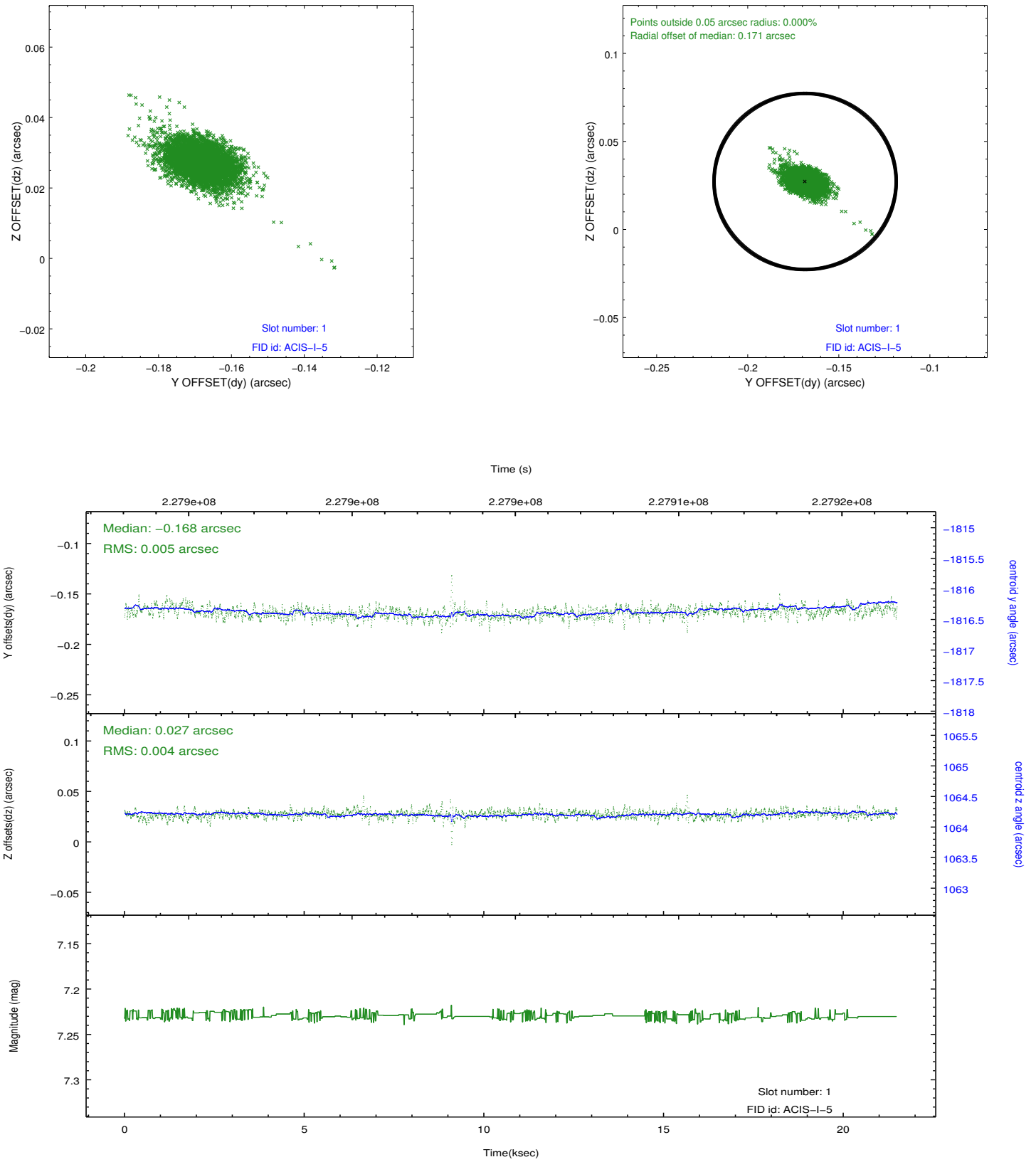


2.5 FID Slots

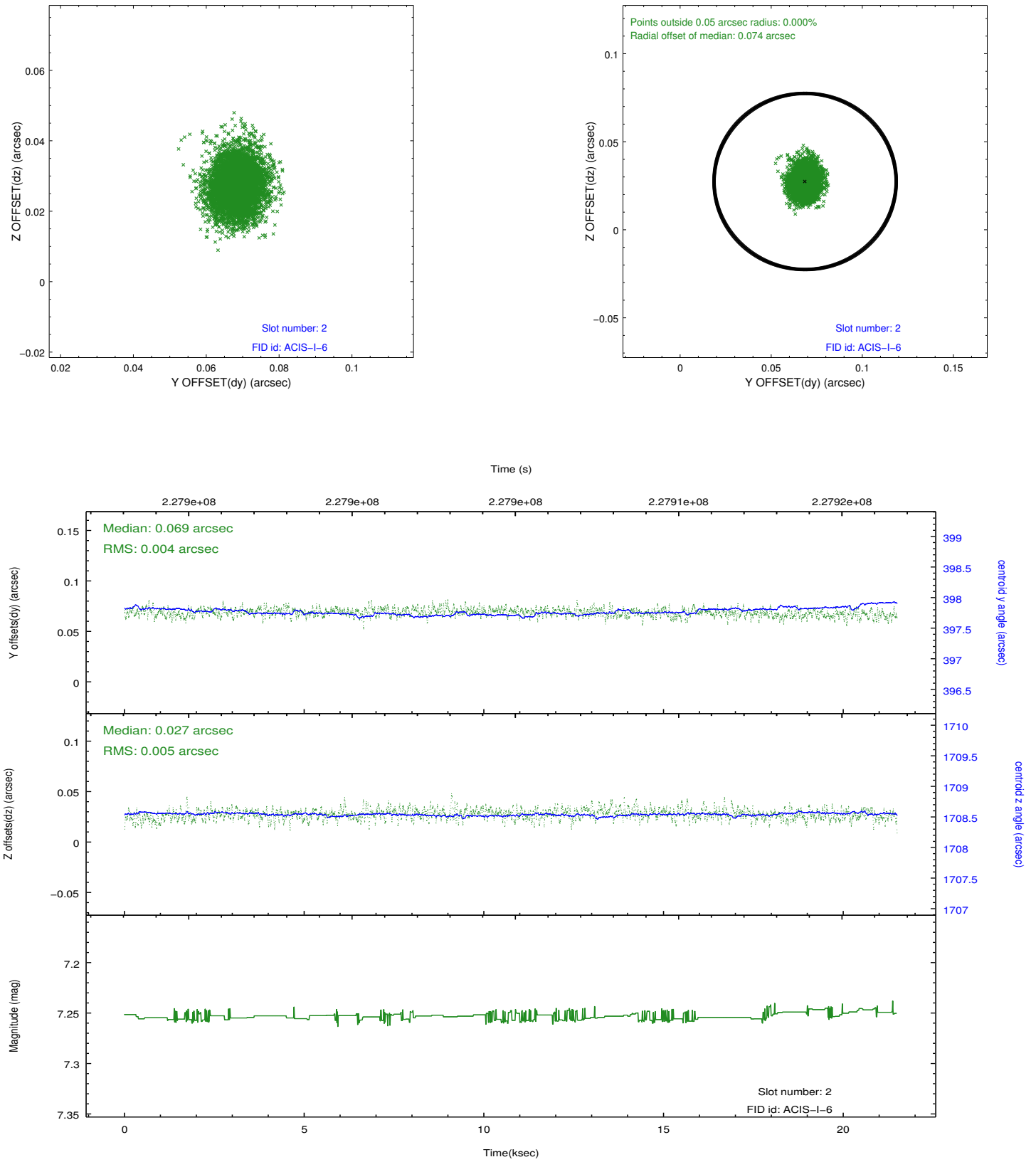
2.5.1 Slot 0



2.5.2 Slot 1



2.5.3 Slot 2



A Summary

A.1 Status

V&V Scientist	Jen Lauer
V&V Date (YYYY-MM-DD)	2013.01.14
V&V Edition	1
V&V Disposition and Status	OK
V&V Charge Time	21.04895

A.2 Comments