

V&V Reference Report

L2 ASCDS Version : 7.6.7.1

Observation 5803 - L2 Version 002
Chandra X-Ray Center

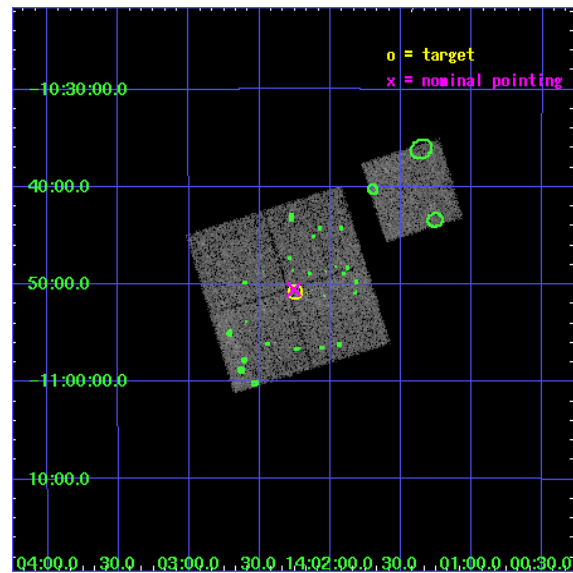
L2 Processing Date : Mar 17 2006

Contents

1	Front	2
2	OBI	3
2.1	OBI	3
2.1.1	Images	3
2.1.2	Bias	3
2.1.3	Parameters	4
2.1.4	Events	4
2.2	Compared Parameters	5
2.3	Aspect	6
2.4	Star Slots	9
2.4.1	Slot 3	9
2.4.2	Slot 4	10
2.4.3	Slot 5	11
2.4.4	Slot 6	12
2.4.5	Slot 7	13
2.5	FID Slots	14
2.5.1	Slot 0	14
2.5.2	Slot 1	15
2.5.3	Slot 2	16
3	Point Sources	17
A	Summary	18
A.1	Status	18
A.2	Comments	18

1 Front

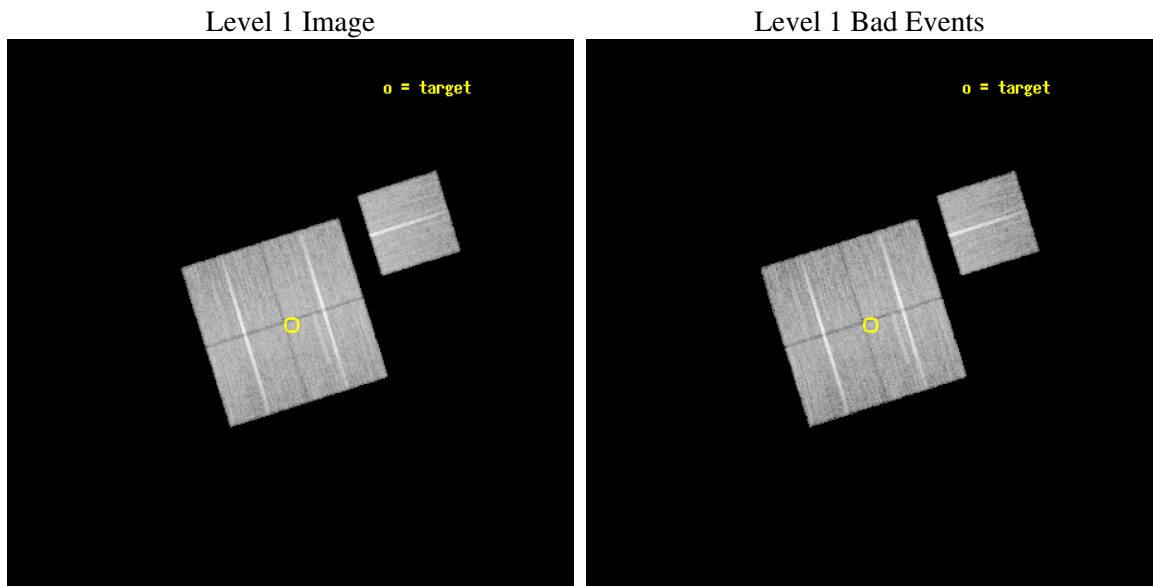
seq_num	800516
obs_id	5803
title	Chandra Observations of the DLS Shear-Selected Cluster Survey
observer	Prof. John Hughes
object	DLS J1402-1052
dtcycle	0
cycle	P
ra_targ	210.56125
dec_targ	-10.845833
ra_nom	210.56428514986
dec_nom	-10.842294137727
roll_nom	72.615231036859
revision	2
ontime	21048.958959371
livetime	20773.938814549
ontime0	21042.676978856
ontime1	21052.099959522
ontime2	21048.958959371
ontime3	21048.958959371
ontime6	21052.099959522
l2events	55943



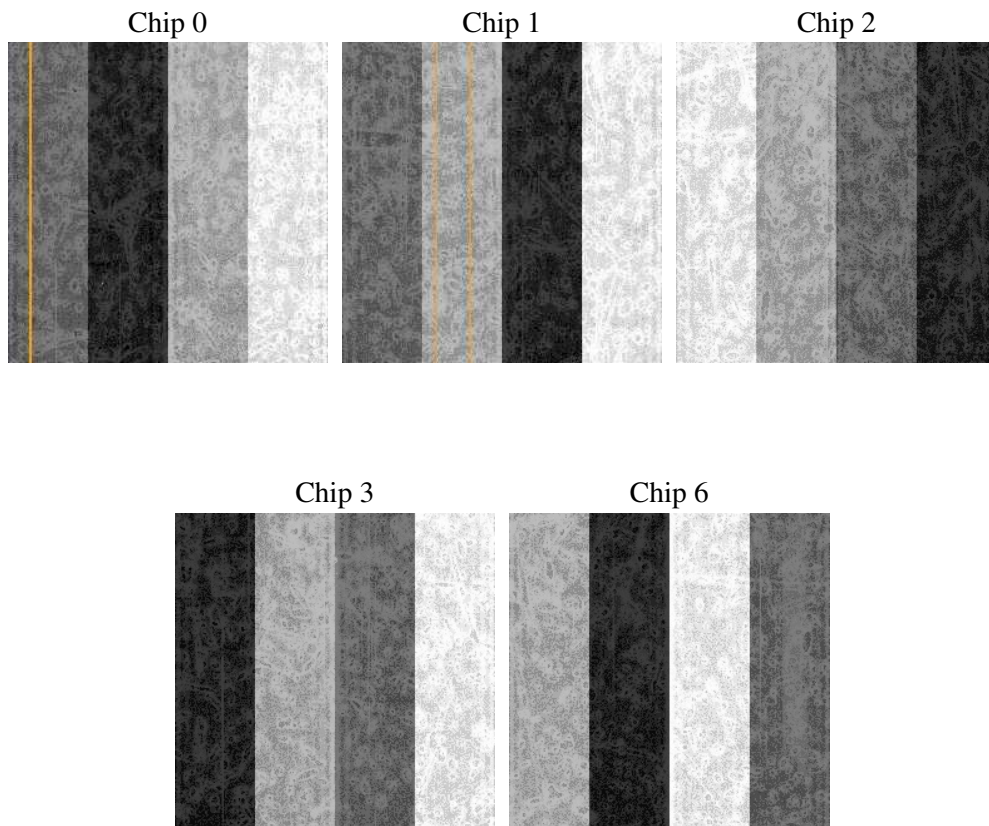
2 OBI

2.1 OBI

2.1.1 Images



2.1.2 Bias



2.1.3 Parameters

obi_num	0
ascdsver	7.6.7.1
caldbver	3.2.1
date	2006-03-17T13:13:43
revision	2

sched_exp_time	21000.000000
ontime	21054.212115705
ontime0	21047.930115312
ontime1	21057.353115857
ontime2	21054.212095827
ontime3	21054.212115705
ontime6	21057.353115857
l1events	645769

2.1.4 Events

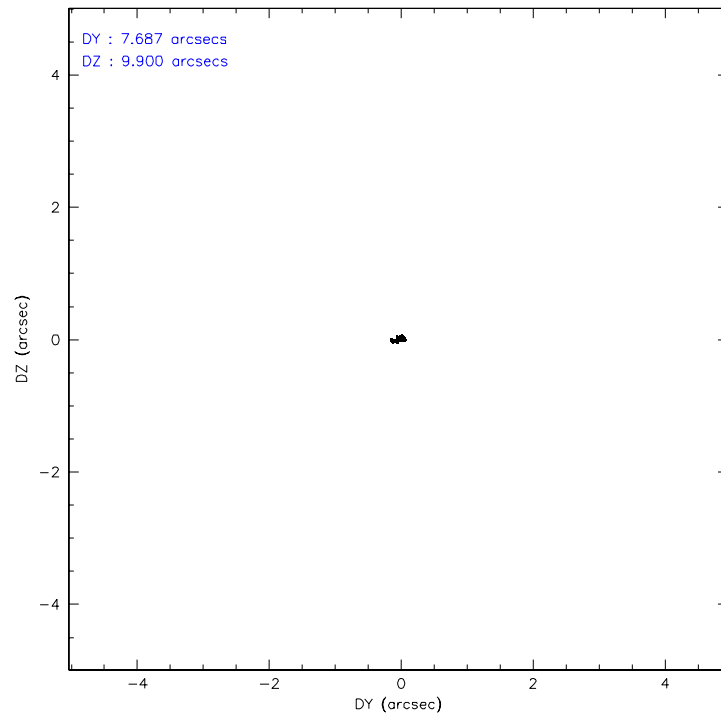
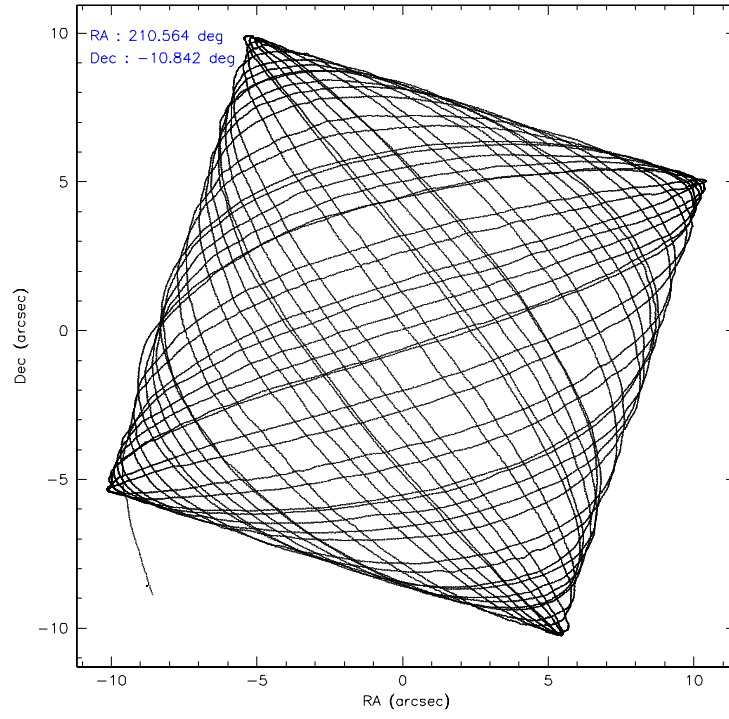
	ccd 0	ccd 1	ccd 2	ccd 3	ccd 6
level 1 events	122726	123785	136274	133814	129170
rejected events	109776	108957	123191	121058	115862
rejected %	89%	88%	90%	90%	89%

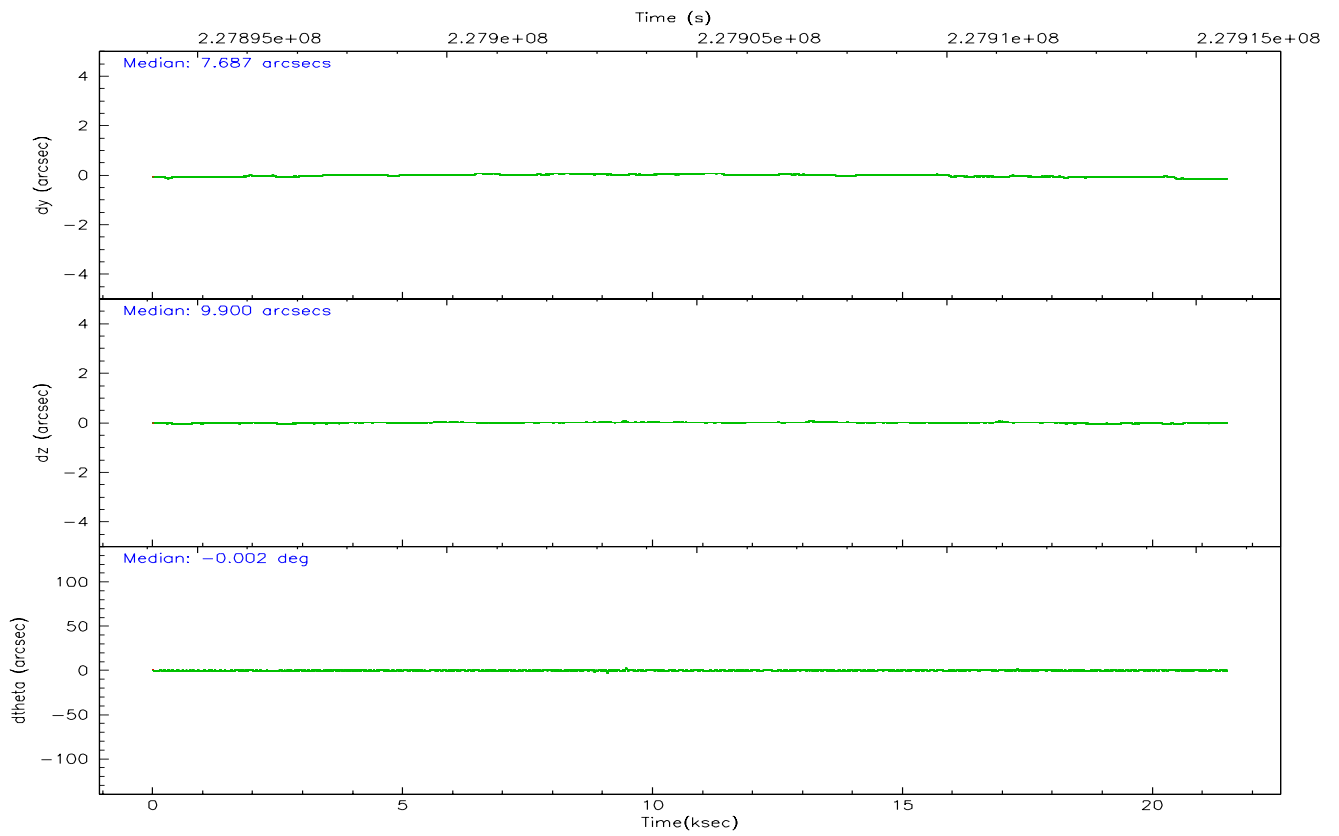
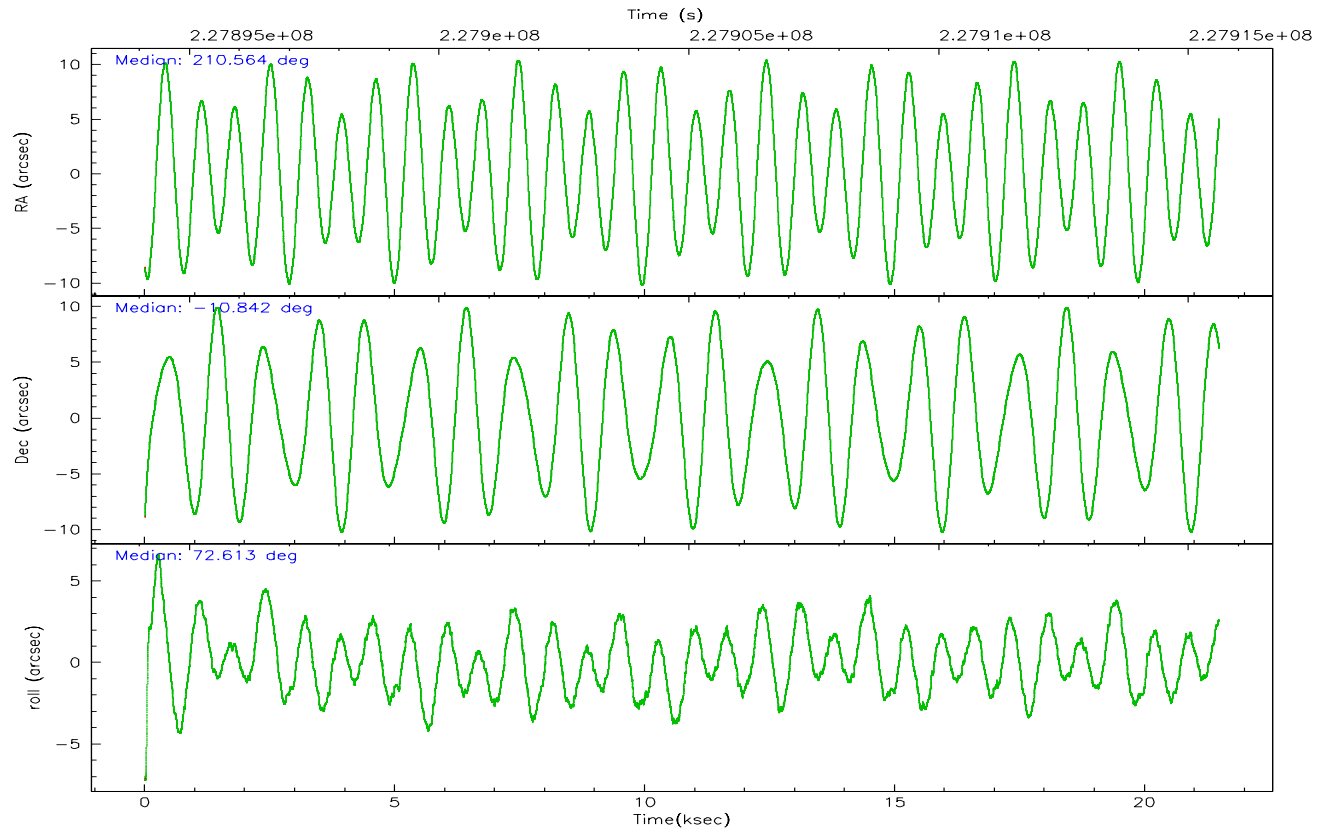
	ccd 0	ccd 1	ccd 2	ccd 3	ccd 6
grade 0 events	4426	5428	4913	4684	4713
	3%	4%	3%	3%	3%
grade 1 events	78	74	59	85	56
	0%	0%	0%	0%	0%
grade 2 events	3146	3242	3036	2720	2879
	2%	2%	2%	2%	2%
grade 3 events	1501	1665	1459	1443	1508
	1%	1%	1%	1%	1%
grade 4 events	1428	1616	1398	1483	1441
	1%	1%	1%	1%	1%
grade 5 events	4520	4945	4576	5337	5274
	3%	3%	3%	3%	4%
grade 6 events	2450	2878	2279	2431	2769
	1%	2%	1%	1%	2%
grade 7 events	105177	103937	118554	115631	110530
	85%	83%	86%	86%	85%

2.2 Compared Parameters

Parameter	Planned	Actual	Parameter	Planned	Actual
Instrument	ACIS	ACIS	Obspar format version number	6	6
Detector	ACIS-01236	ACIS-01236	Obspar file type	PREDICTED	ACTUAL
Grating	NONE	NONE	Obspar update status	NONE	UPDATED
Data mode	VFAINT	VFAINT	On-chip summing requested	N	N
Observation mode	POINTING	POINTING	Subarray requested	NONE	NONE
Pointing RA	210.570507	210.5642851498566	Alternating exposures requested	N	N
Pointing Dec	-10.868990	-10.84229413772676	Primary exposure time	0.000000	3.1
Pointing Roll	72.407725	72.6152310368586			
SIM focus pos (mm)	-0.782348	-0.7809083437167272			
SIM defocus (mm)	0	0.001439871863259334			
SIM translation stage pos (mm)	-233.592463	-233.5874344608287			
SIM translation stage offset (mm)	0	-0.005018542100998502			
Observation start time	227894612.184000	227893529.92714			
Observation start date	2005-03-22T16:02:28	2005-03-22T15:45:29			
Observation end time	227915612.184000	227916166.54067			
Observation end date	2005-03-22T21:52:28	2005-03-22T22:02:46			
Read mode	TIMED	TIMED			

2.3 Aspect



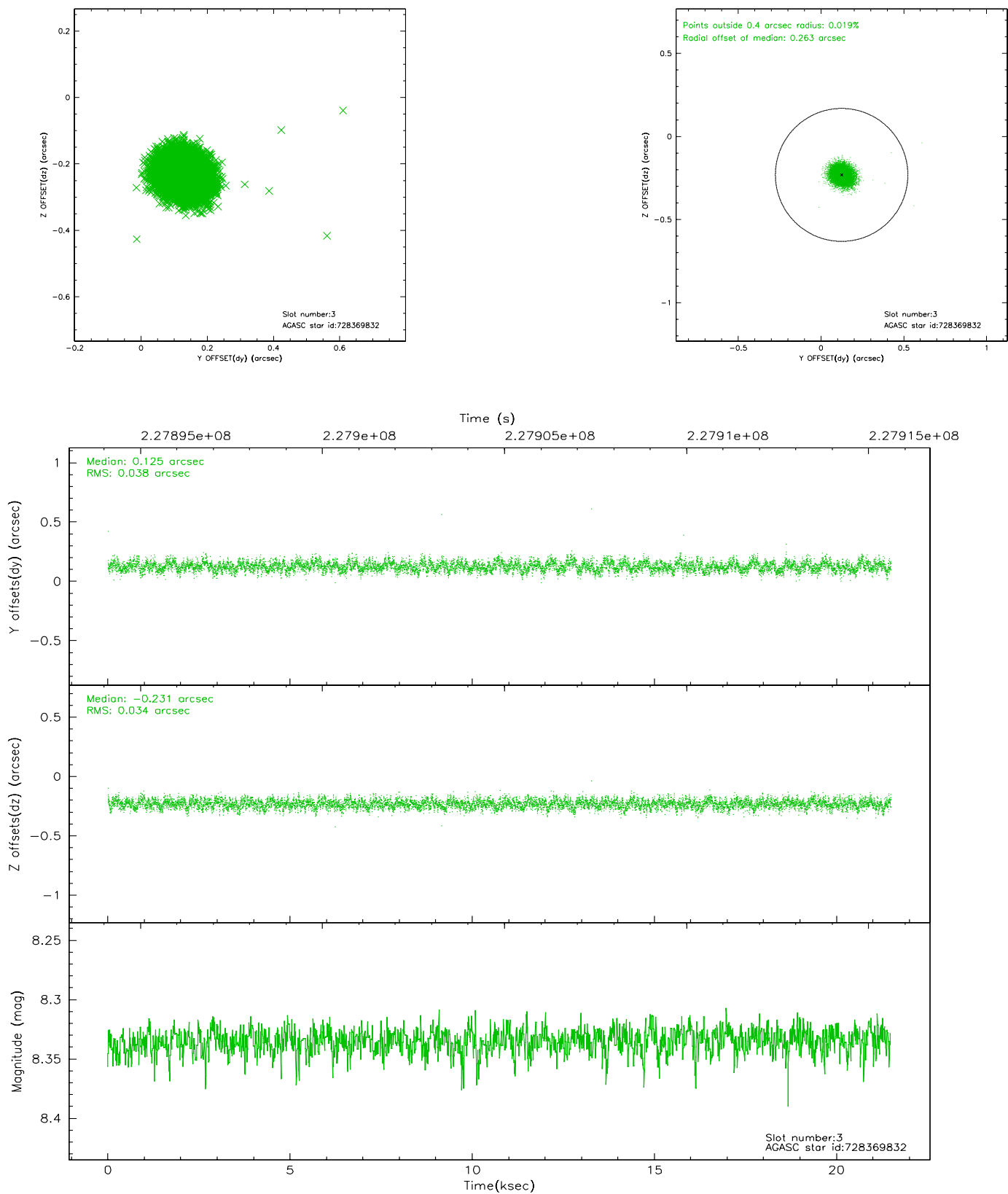


Slot Statistics

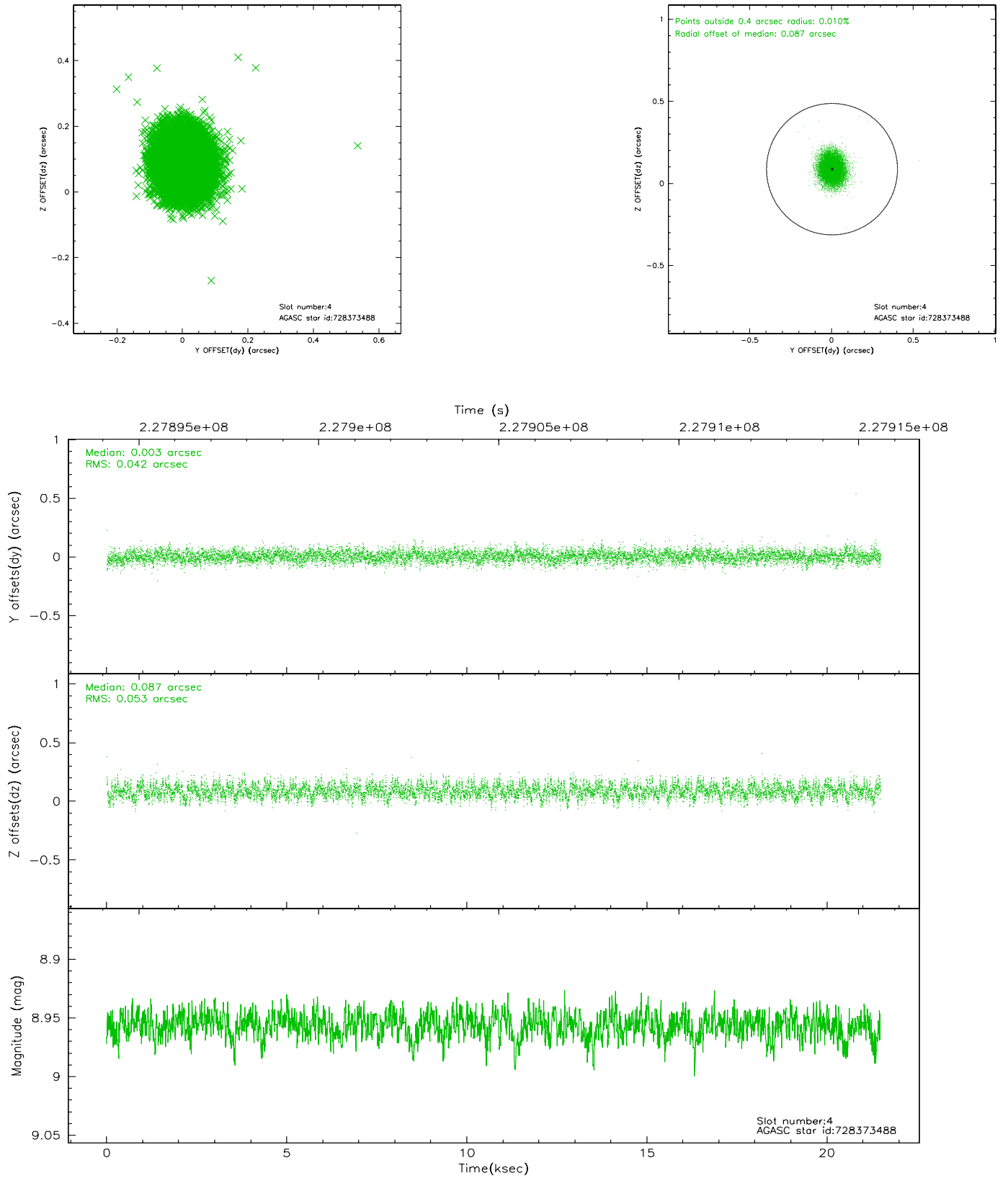
slot	status	id	mag	n_pts	med_dy	med_dz	dr1	dr2	ra	dec	mean_y	mean_z
0	FID	ACIS-I-1	7.24	5243	-0.012	0.043	0.006	0.012	0.000000	0.000000	931.99	-833.32
1	FID	ACIS-I-5	7.23	5243	-0.138	0.020	0.006	0.011	0.000000	0.000000	-1816.16	1064.05
2	FID	ACIS-I-6	7.25	5242	0.058	0.008	0.007	0.011	0.000000	0.000000	397.41	1708.74
3	GUIDE	728369832	8.34	10485	0.125	-0.231	0.054	0.087	210.251544	-11.309313	-1851.62	593.89
4	GUIDE	728373488	8.96	10482	0.003	0.087	0.072	0.115	210.737272	-10.465613	1562.65	-123.49
5	GUIDE	728376288	9.03	10475	-0.103	-0.145	0.078	0.126	210.308344	-10.377325	1406.43	1419.63
6	GUIDE	728377784	7.89	10484	-0.013	0.138	0.051	0.084	210.974476	-11.272975	-955.73	-1799.06
7	GUIDE	728373224	9.13	10481	-0.012	0.158	0.086	0.139	211.096147	-11.494941	-1589.01	-2449.17

2.4 Star Slots

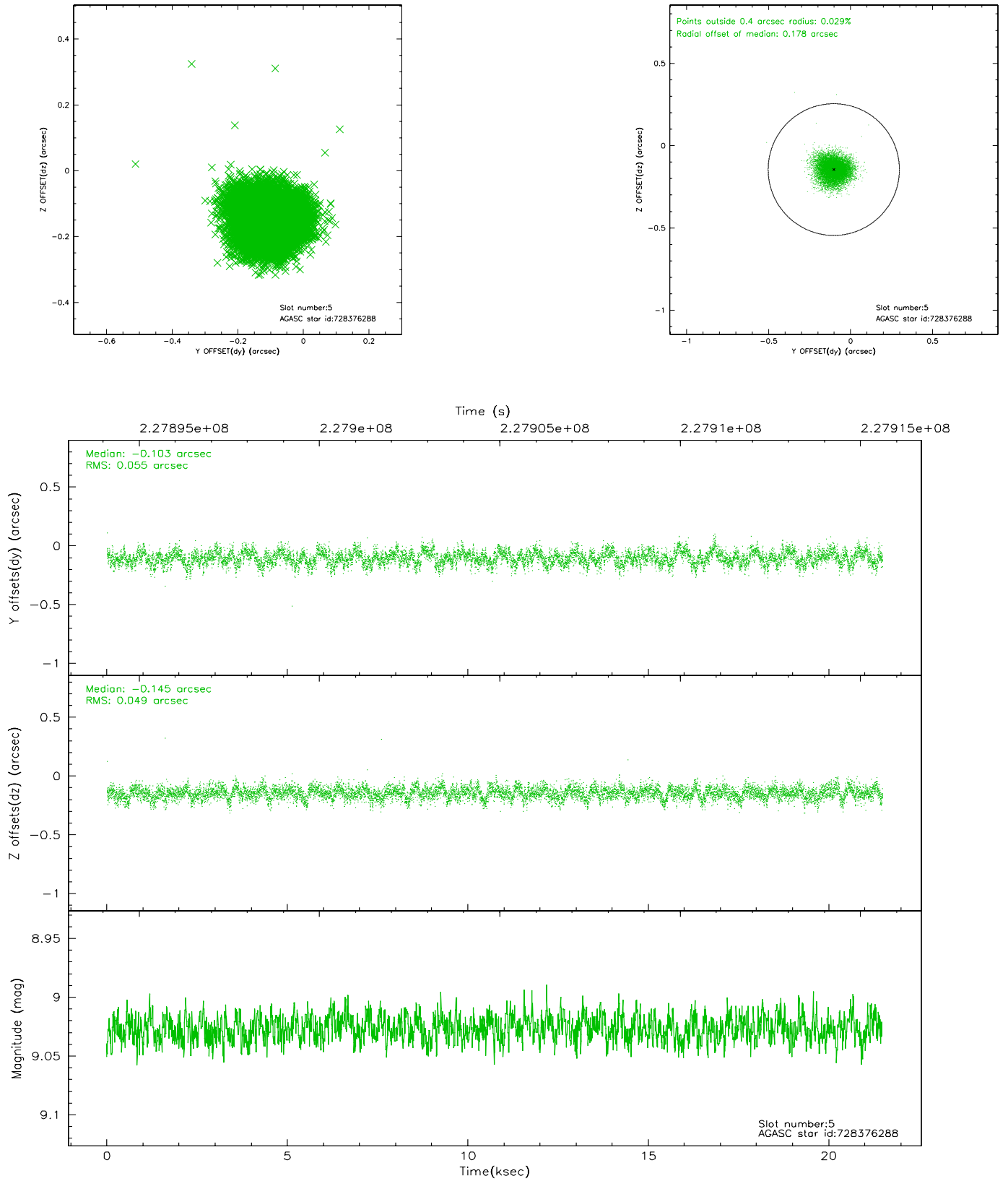
2.4.1 Slot 3



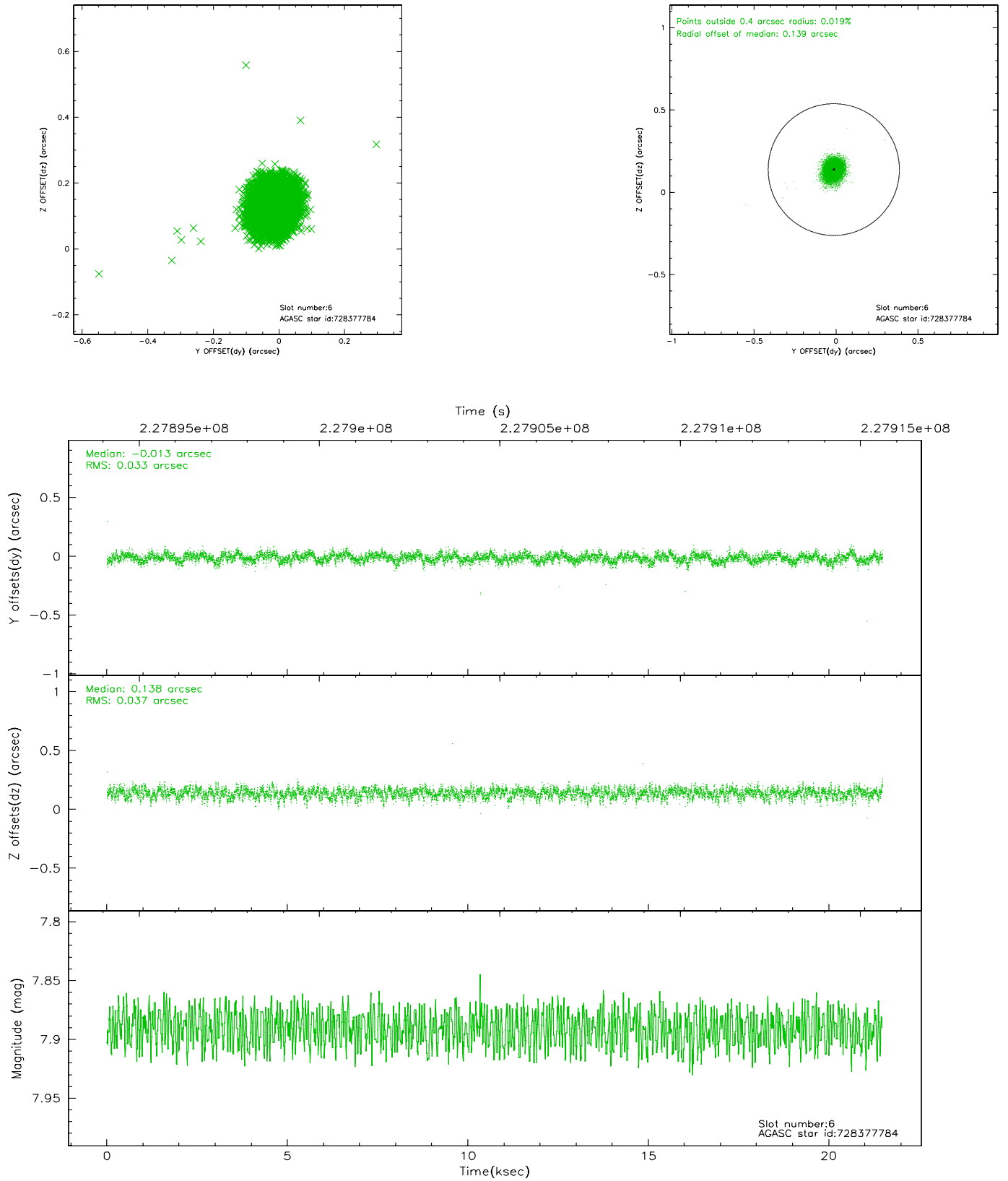
2.4.2 Slot 4



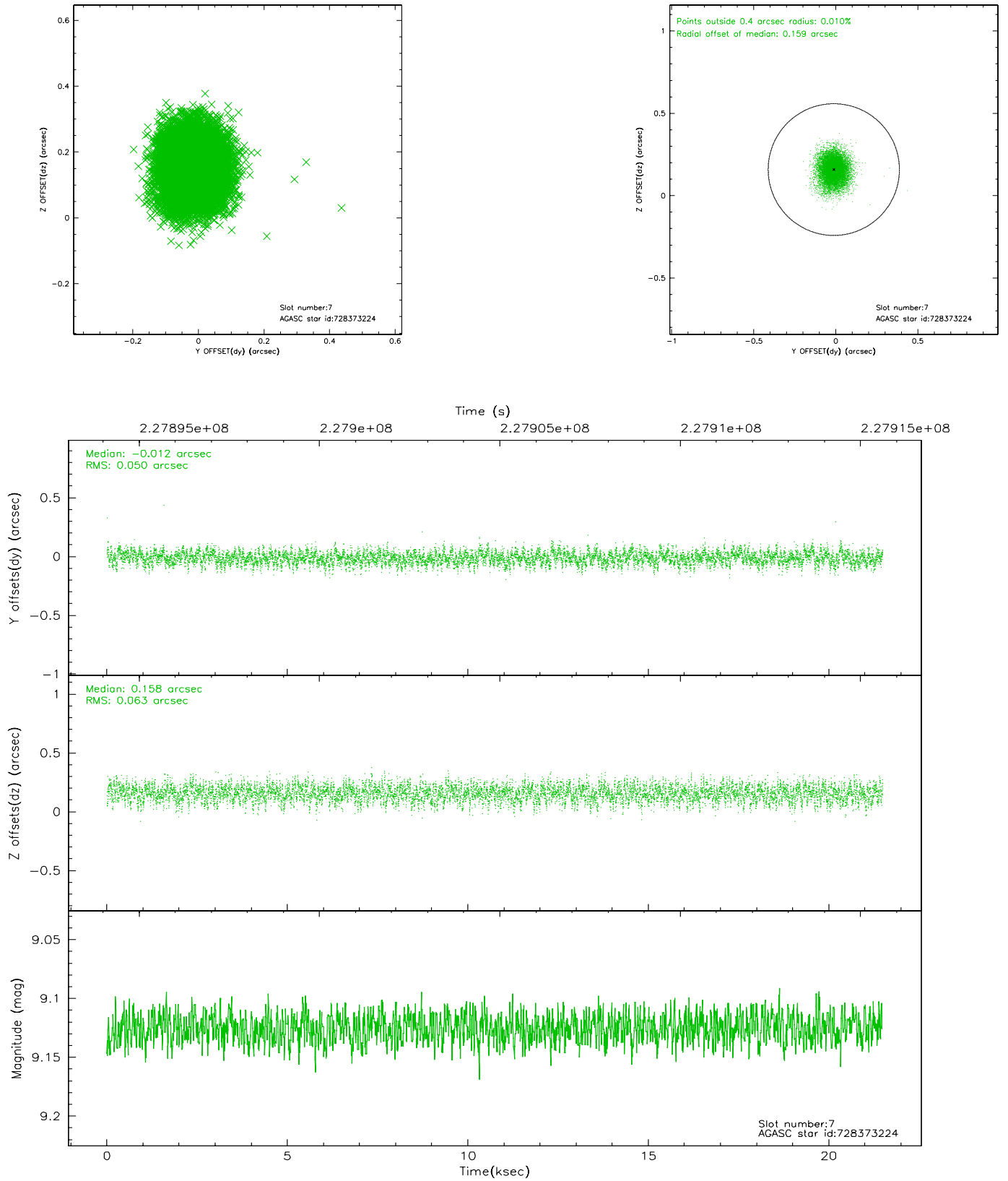
2.4.3 Slot 5



2.4.4 Slot 6

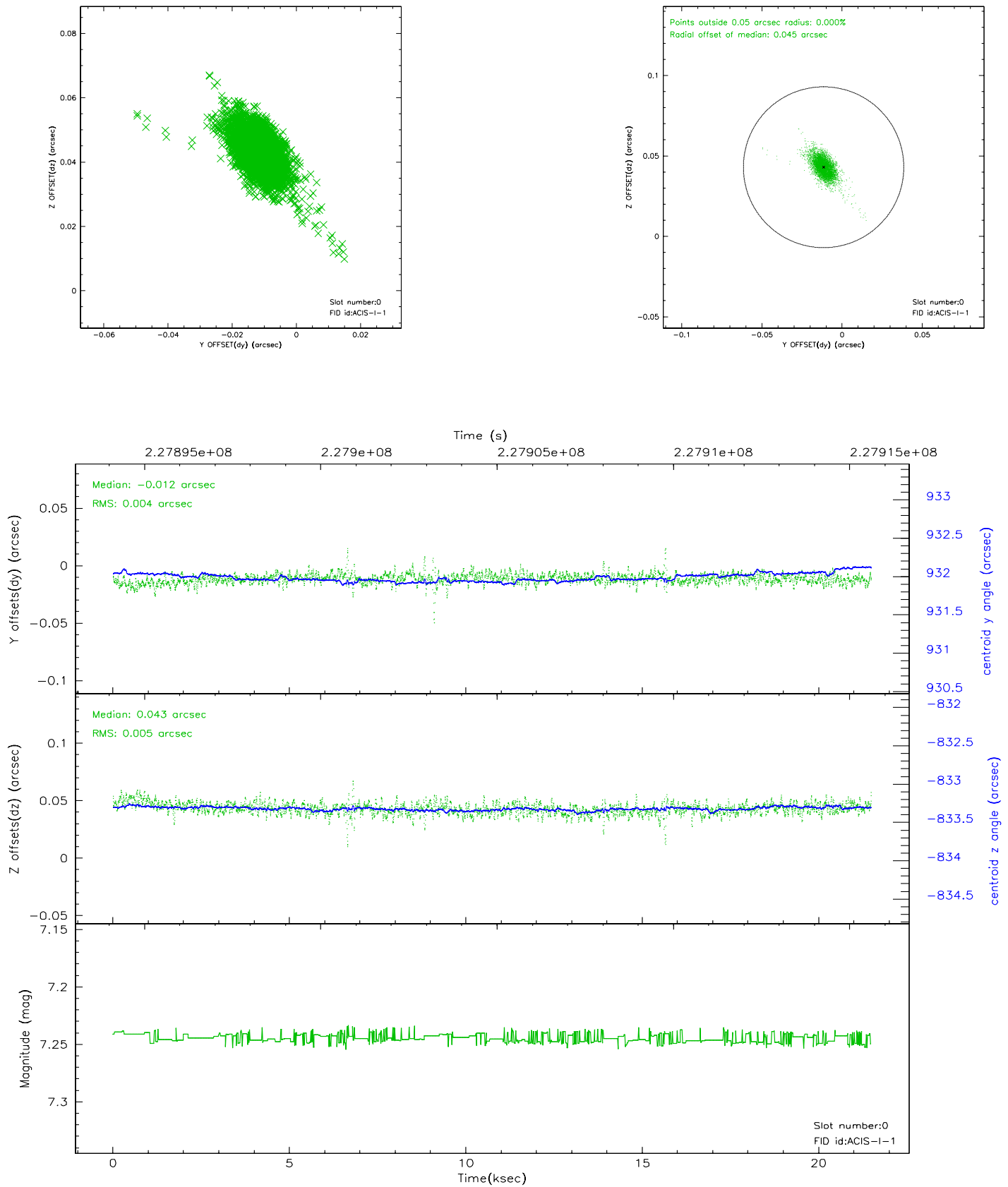


2.4.5 Slot 7

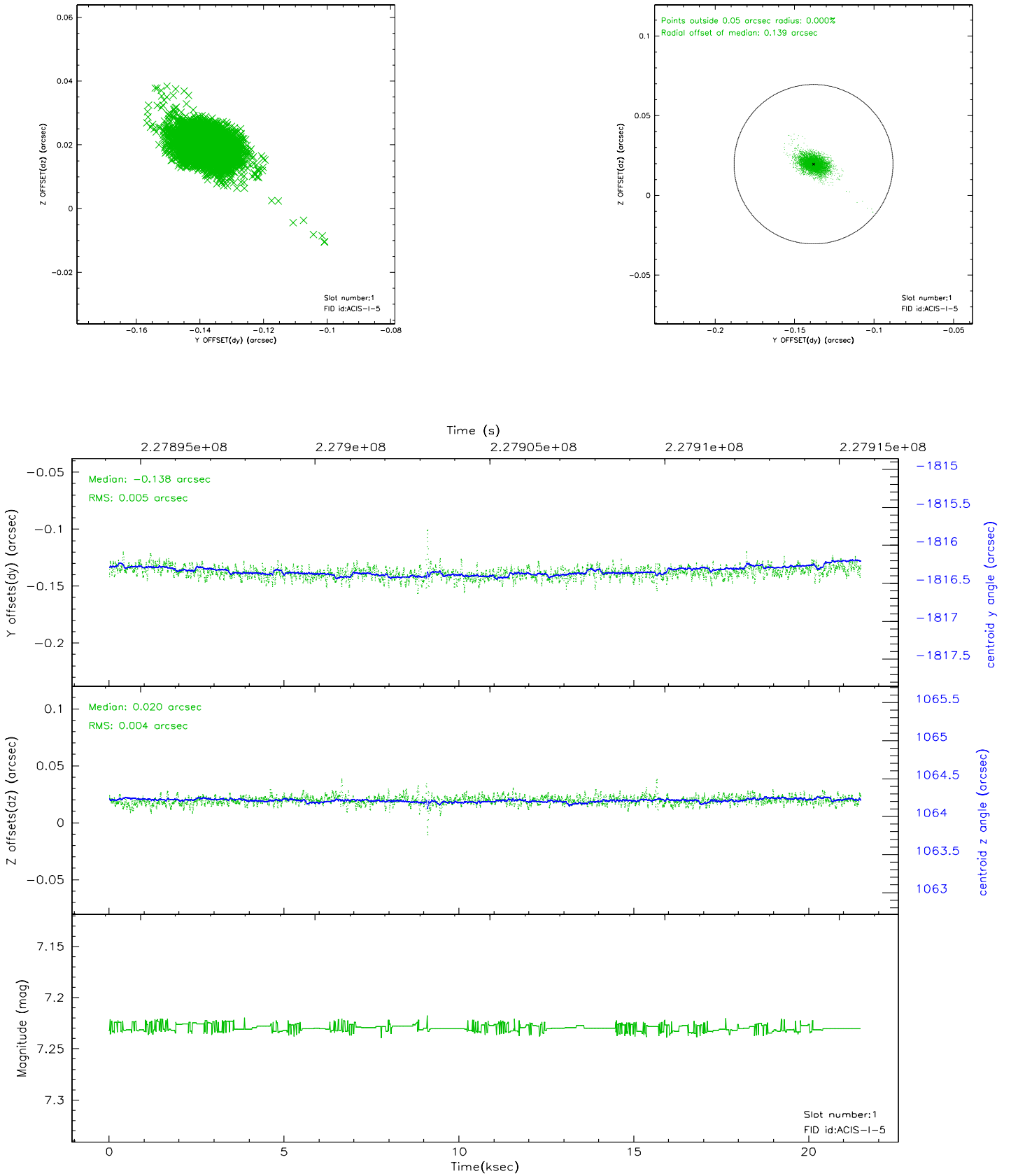


2.5 FID Slots

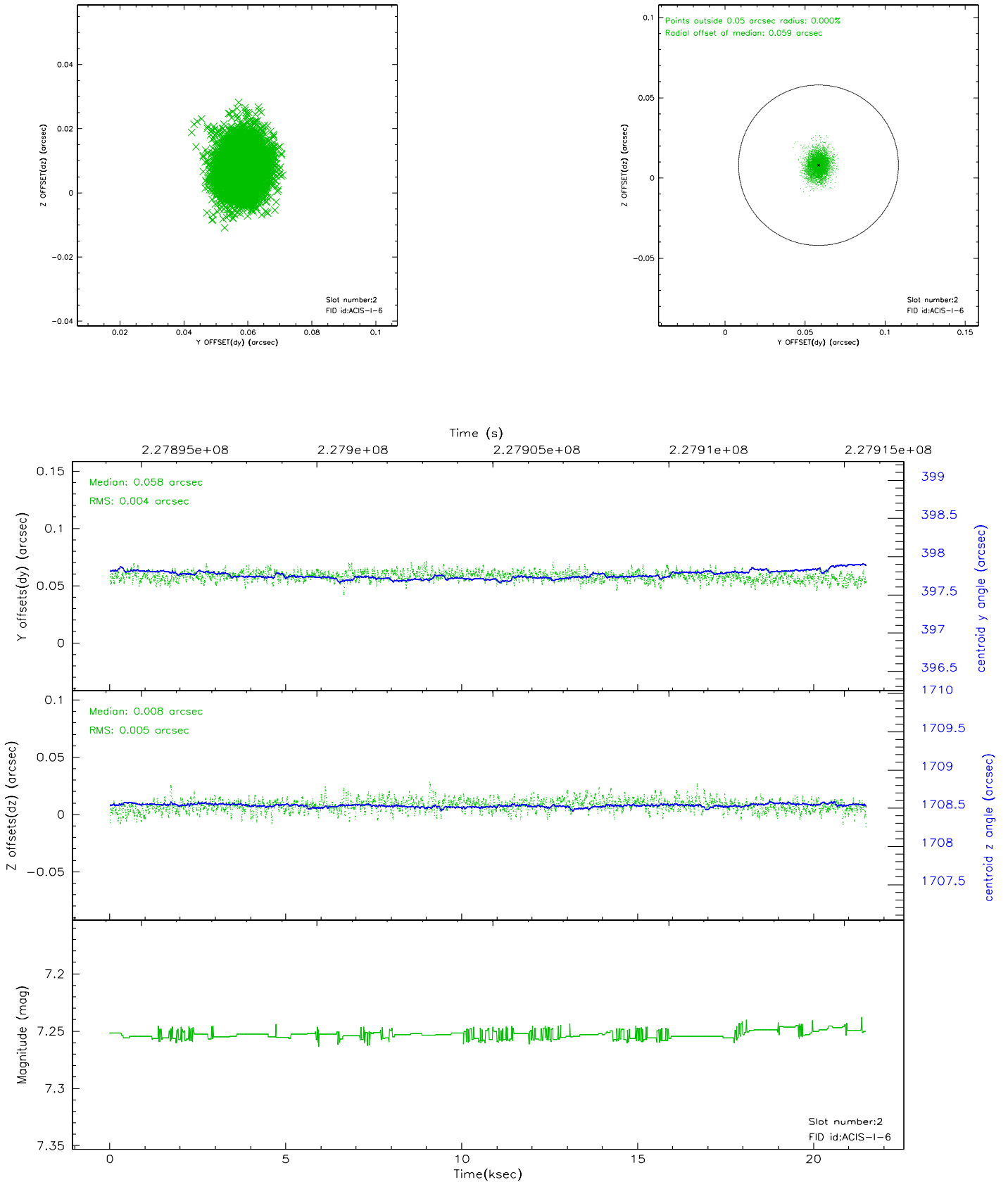
2.5.1 Slot 0



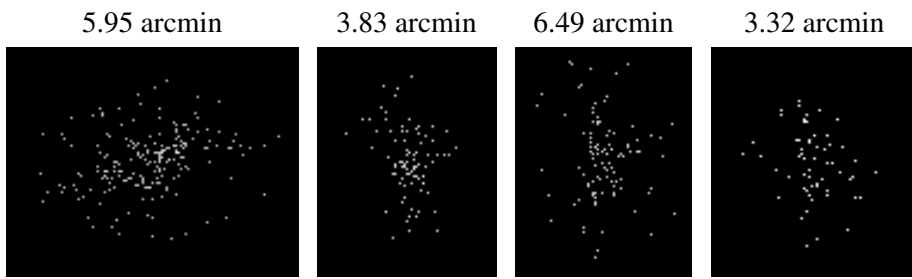
2.5.2 Slot 1



2.5.3 Slot 2



3 Point Sources



A Summary

A.1 Status

V&V Scientist	Beth Sundheim
V&V Date (YYYY-MM-DD)	2006.03.17
V&V Edition	1
V&V Disposition and Status	OK
V&V Charge Time	21.04895

A.2 Comments