

# V&V Reference Report

## L2 ASCDS Version : 8.4.4

Observation 57973 - L2 Version 2  
Chandra X-Ray Center

L2 Processing Date : May 9 2012

## Contents

<b>1</b>	<b>Front</b>	<b>2</b>
<b>2</b>	<b>OBI</b>	<b>3</b>
2.1	OBI . . . . .	3
2.1.1	Images . . . . .	3
2.1.2	Bias . . . . .	3
2.1.3	Parameters . . . . .	4
2.1.4	Events . . . . .	4
2.2	Compared Parameters . . . . .	5
2.3	Star Slots . . . . .	6
2.4	FID Slots . . . . .	6
<b>A</b>	<b>Summary</b>	<b>7</b>
A.1	Status . . . . .	7
A.2	Comments . . . . .	7

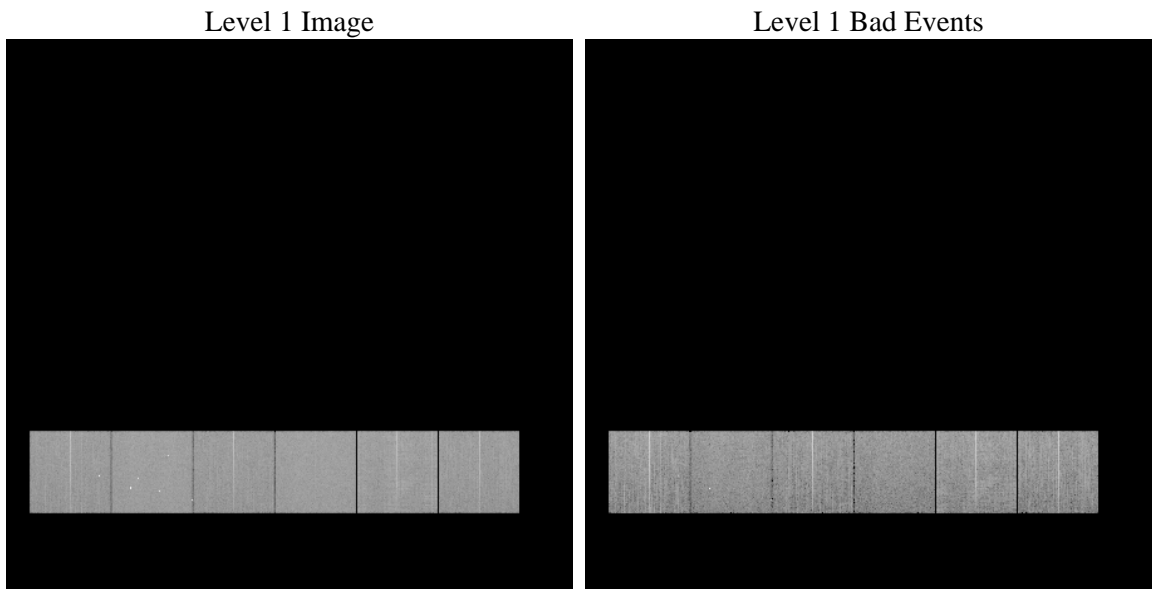
# 1 Front

seq_num	&#160	Sequence number
obs_id	57973	Observation id
title	ACIS-456789 diagnostics	Proposal title
observer	CHANDRA engineering request/realtime commanding	Principal investig
object	&#160	Source name
dtcycle	0	&#160
cycle	P	events from which exps? Prim/Second/Both
ra_targ	0.0	Observer's specified target RA [deg]
dec_targ	0.0	Observer's specified target Dec [deg]
ra_nom	9.9255896030097	Nominal RA [deg]
dec_nom	11.186033234461	Nominal Dec [deg]
roll_nom	298.0160871755	Nominal Roll [deg]
revision	2	Processing version of data
ontime	8271.999969244	Sum of GTIs [s]
livetime	8167.254924833	Livetime [s]
ontime4	8271.999969244	Sum of GTIs [s]
ontime5	8271.999969244	Sum of GTIs [s]
ontime6	8271.999969244	Sum of GTIs [s]
ontime7	8271.999969244	Sum of GTIs [s]
ontime8	8271.999969244	Sum of GTIs [s]
ontime9	8271.999969244	Sum of GTIs [s]
l2events	657276	Number of level 2 events

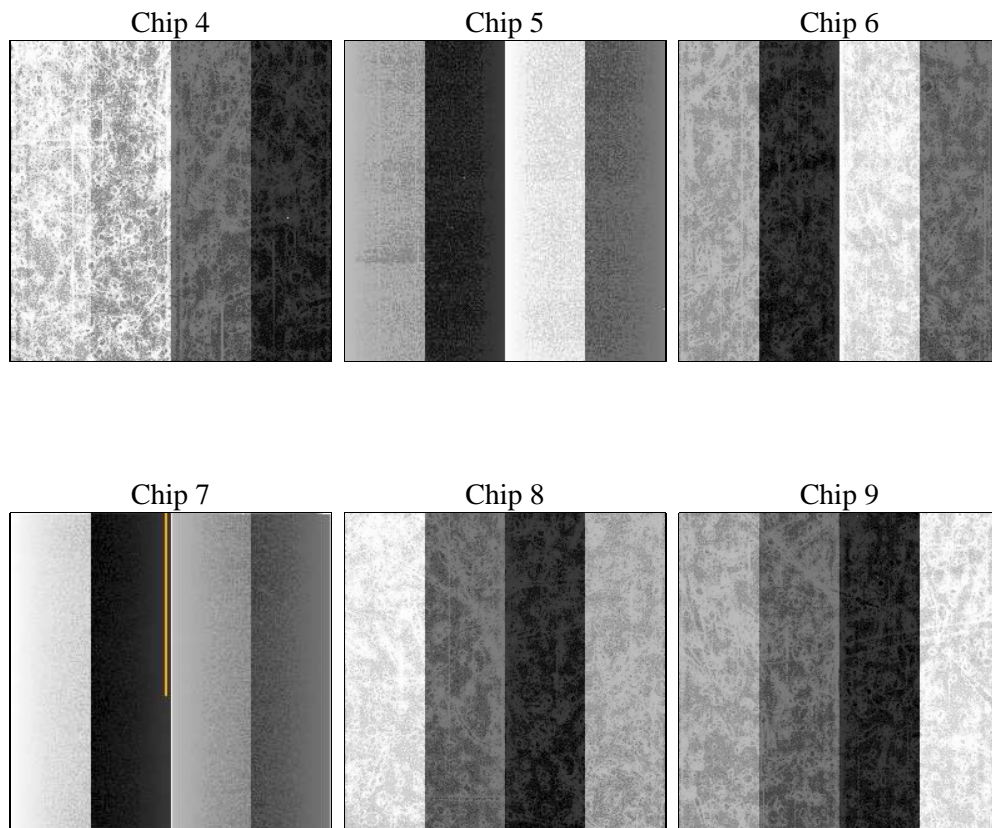
## 2 OBI

### 2.1 OBI

#### 2.1.1 Images



#### 2.1.2 Bias



### 2.1.3 Parameters

obi_num	0	Obi number	sched_exp_time	0.0	[s] Scheduled observation exposure time
ascdsver	8.4.4	Processing system revision	ontime	8271.999969244	Sum of GTIs [s]
caldsver	4.4.9	&#160	ontime4	8271.999969244	Sum of GTIs [s]
date	2012-05-09T07:43:28	Date and time of file creation	ontime5	8271.999969244	Sum of GTIs [s]
revision	2	Processing version of data	ontime6	8271.999969244	Sum of GTIs [s]
			ontime7	8271.999969244	Sum of GTIs [s]
			ontime8	8271.999969244	Sum of GTIs [s]
			ontime9	8271.999969244	Sum of GTIs [s]
			l1events	1153849	Number of level 1 events

### 2.1.4 Events

	ccd 4	ccd 5	ccd 6	ccd 7	ccd 8	ccd 9		ccd 4	ccd 5	ccd 6	ccd 7	ccd 8	ccd 9
level 1 events	181644	206548	179805	202745	202979	180128	grade 0 events	59037	24197	57564	28342	61959	56465
rejected events	78956	69858	71830	63530	81074	75529		32%	11%	32%	13%	30%	31%
rejected %	43%	33%	39%	31%	39%	41%	grade 1 events	598	262	349	166	418	436
								0%	0%	0%	0%	0%	0%
							grade 2 events	16440	48795	18983	30447	22414	18268
								9%	23%	10%	15%	11%	10%
							grade 3 events	7089	6760	6923	13324	8678	6927
								3%	3%	3%	6%	4%	3%
							grade 4 events	6940	6742	6966	12894	8413	6839
								3%	3%	3%	6%	4%	3%
							grade 5 events	4151	9654	4331	10428	5501	4784
								2%	4%	2%	5%	2%	2%
							grade 6 events	13224	50249	17595	54272	20501	16137
								7%	24%	9%	26%	10%	8%
							grade 7 events	74165	59889	67094	52872	75095	70272
								40%	28%	37%	26%	36%	39%

## 2.2 Compared Parameters

Parameter	Planned	Actual	Parameter	Planned	Actual
Instrument	ACIS	ACIS	Obspar format version number	7	7
Detector	ACIS-456789	ACIS-456789	Obspar file type	PREDICTED	ACTUAL
Grating	NONE	NONE	Obspar update status	NONE	UPDATED
Data mode	FAINT	FAINT	On-chip summing requested	N	N
Observation mode	SECONDARY	SECONDARY	Subarray requested	NONE	NONE
[deg] Pointing RA	0	9.925589603009655	Alternating exposures requested	N	N
[deg] Pointing Dec	0	11.18603323446087	[s] Primary exposure time	3.2	3.2
[deg] Pointing Roll	0.0	298.0160871754989			
[mm] SIM focus pos	-0.684267	-0.6828225247311905			
[mm] SIM defocus	0	0.8505141146731063			
[mm] SIM translation stage pos	-190.132523	250.466033080201			
[mm] SIM translation stage offset	0	-0.01005468664627074			
[s] Observation start time (MET)	318964383.431726	318964382.40673			
Observation start date	2008-02-09T17:13:03	2008-02-09T17:13:02			
[s] Observation end time (MET)	318988021.982873	318988020.95788			
Observation end date	2008-02-09T23:47:02	2008-02-09T23:47:00			
Read mode	TIMED	TIMED			

## 2.3 Star Slots

## 2.4 FID Slots

## A Summary

### A.1 Status

V&V Scientist	Jen Lauer
V&V Date (YYYY-MM-DD)	2012.05.10
V&V Edition	1
V&V Disposition and Status	OK
V&V Charge Time	8.271999969244

### A.2 Comments