

V&V Reference Report

L2 ASCDS Version : 7.6.7

Observation 5793 - L2 Version 002
Chandra X-Ray Center

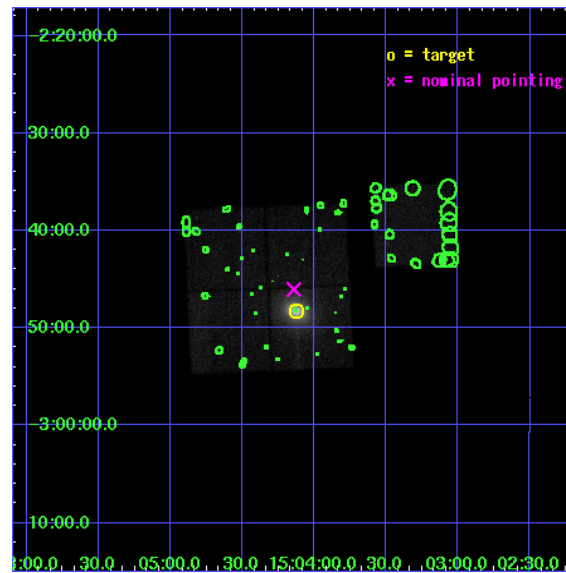
L2 Processing Date: Feb 27 2006

Contents

1	Front	2
2	OBI	3
2.1	OBI	3
2.1.1	Images	3
2.1.2	Bias	3
2.1.3	Parameters	4
2.1.4	Events	4
2.2	Compared Parameters	5
2.3	Aspect	6
2.4	Star Slots	9
2.4.1	Slot 3	9
2.4.2	Slot 4	10
2.4.3	Slot 5	11
2.4.4	Slot 6	12
2.4.5	Slot 7	13
2.5	FID Slots	14
2.5.1	Slot 0	14
2.5.2	Slot 1	15
2.5.3	Slot 2	16
3	Point Sources	17
A	Summary	18
A.1	Status	18
A.2	Comments	18

1 Front

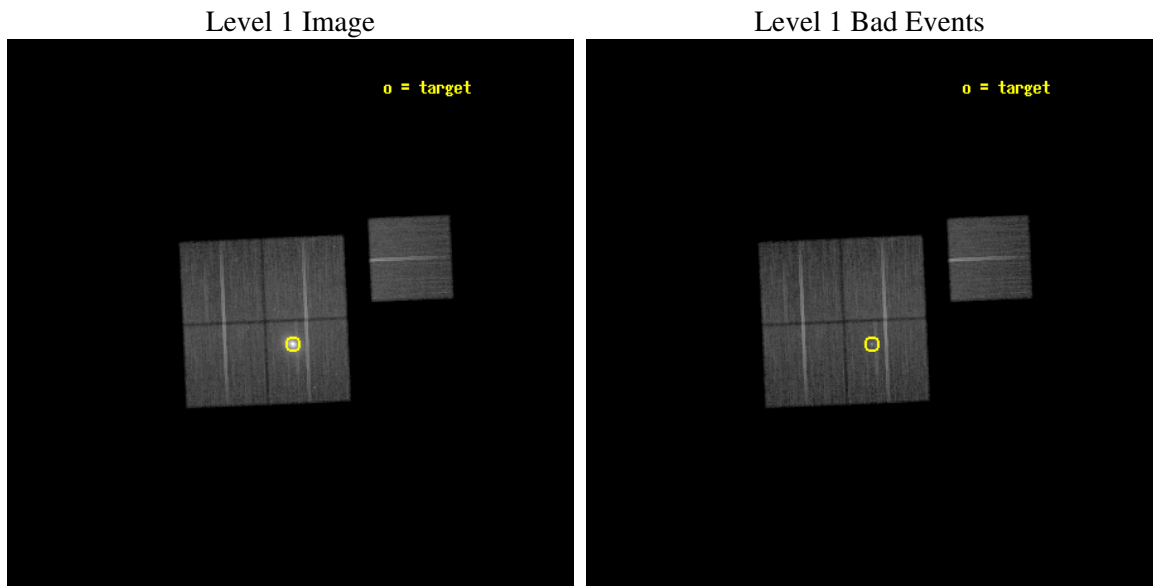
seq_num	800506
obs_id	5793
title	A detailed Chandra Study of the cluster with the most luminous cooling core at $z>0.25$
observer	Dr. Hans Boehringer
object	RXCJ1504.1-0248
dtcycle	0
cycle	P
ra_targ	226.032083
dec_targ	-2.805
ra_nom	226.03562004423
dec_nom	-2.7675313417654
roll_nom	87.537553494836
revision	2
ontime	39673.676962972
livetime	39155.311166114
ontime0	39679.95890367
ontime1	39664.253972381
ontime2	39683.0999237
ontime3	39673.676962972
ontime6	39673.676943004
l2events	243101



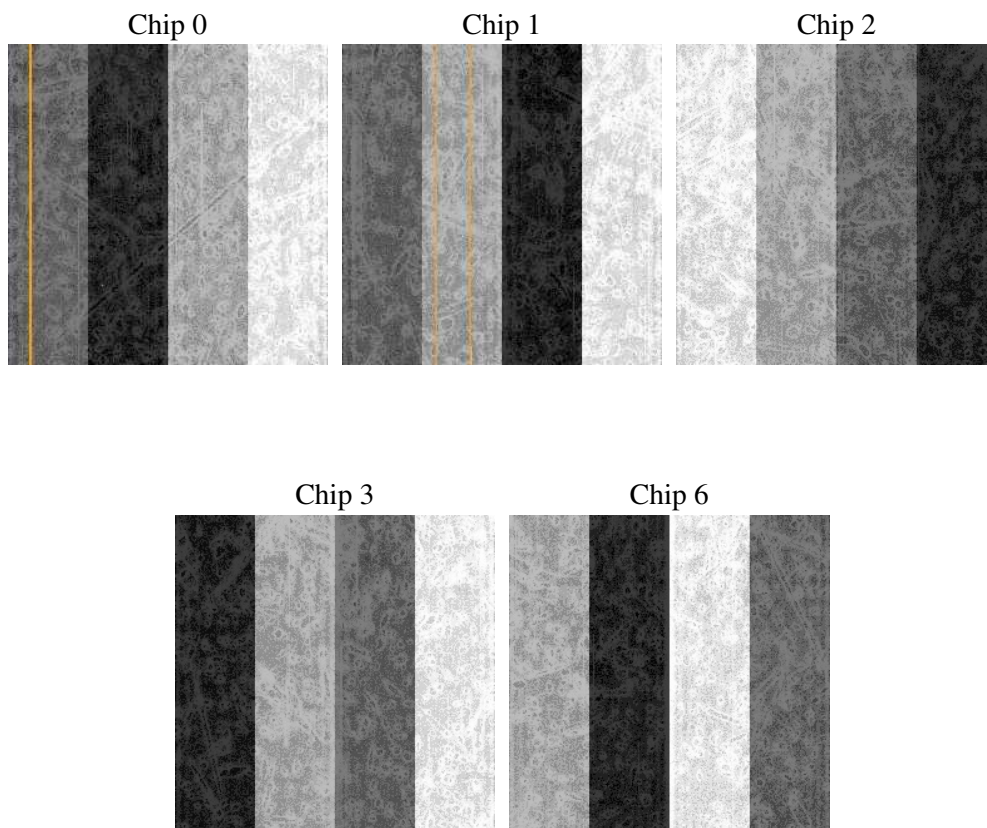
2 OBI

2.1 OBI

2.1.1 Images



2.1.2 Bias



2.1.3 Parameters

obi_num	0
ascdsver	7.6.7
caldbver	3.2.1
date	2006-02-27T16:24:30
revision	2

sched_exp_time	39624.006000
ontime	39677.277910292
ontime0	39683.559850991
ontime1	39667.854919702
ontime2	39686.700871021
ontime3	39677.277910292
ontime6	39677.277890325
l1events	1359065

2.1.4 Events

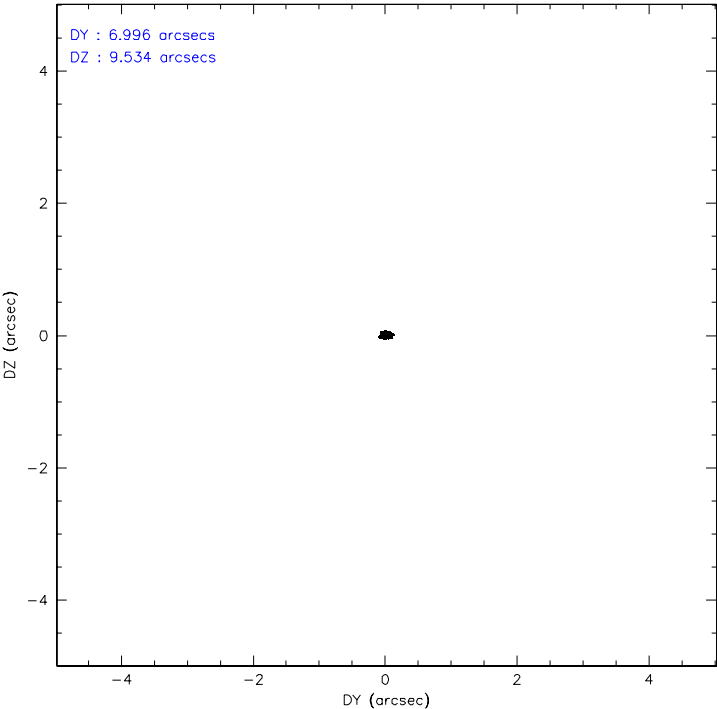
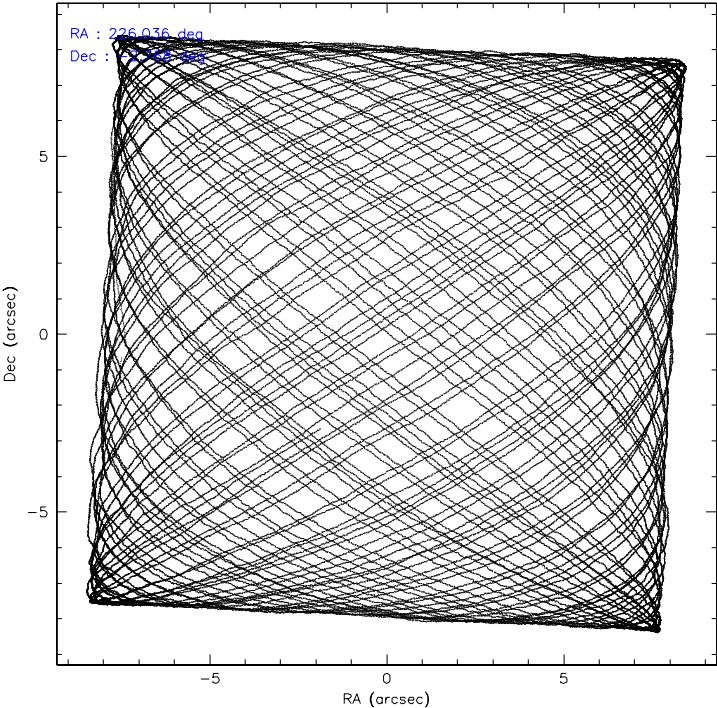
	ccd 0	ccd 1	ccd 2	ccd 3	ccd 6
level 1 events	231160	236680	267843	376247	247135
rejected events	204221	205142	239824	223783	219315
rejected %	88%	86%	89%	59%	88%

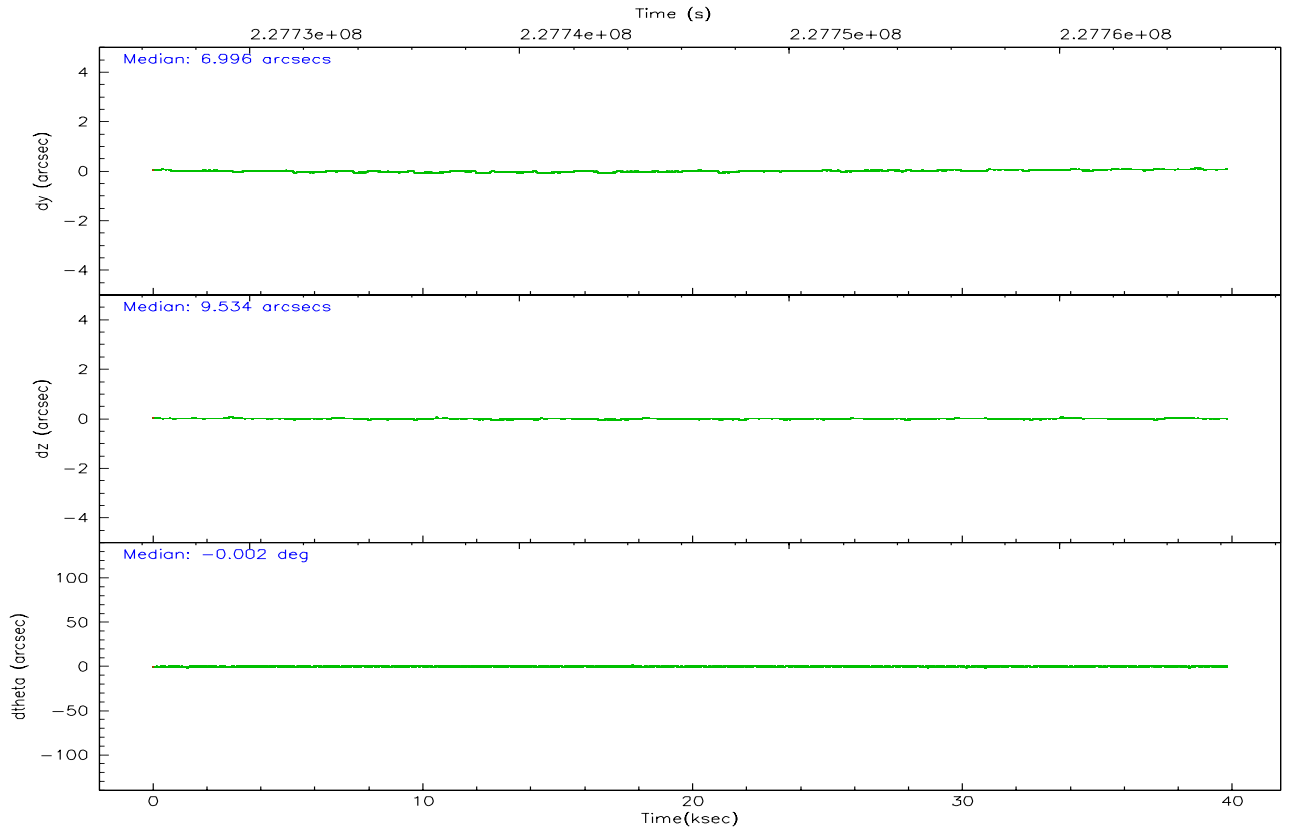
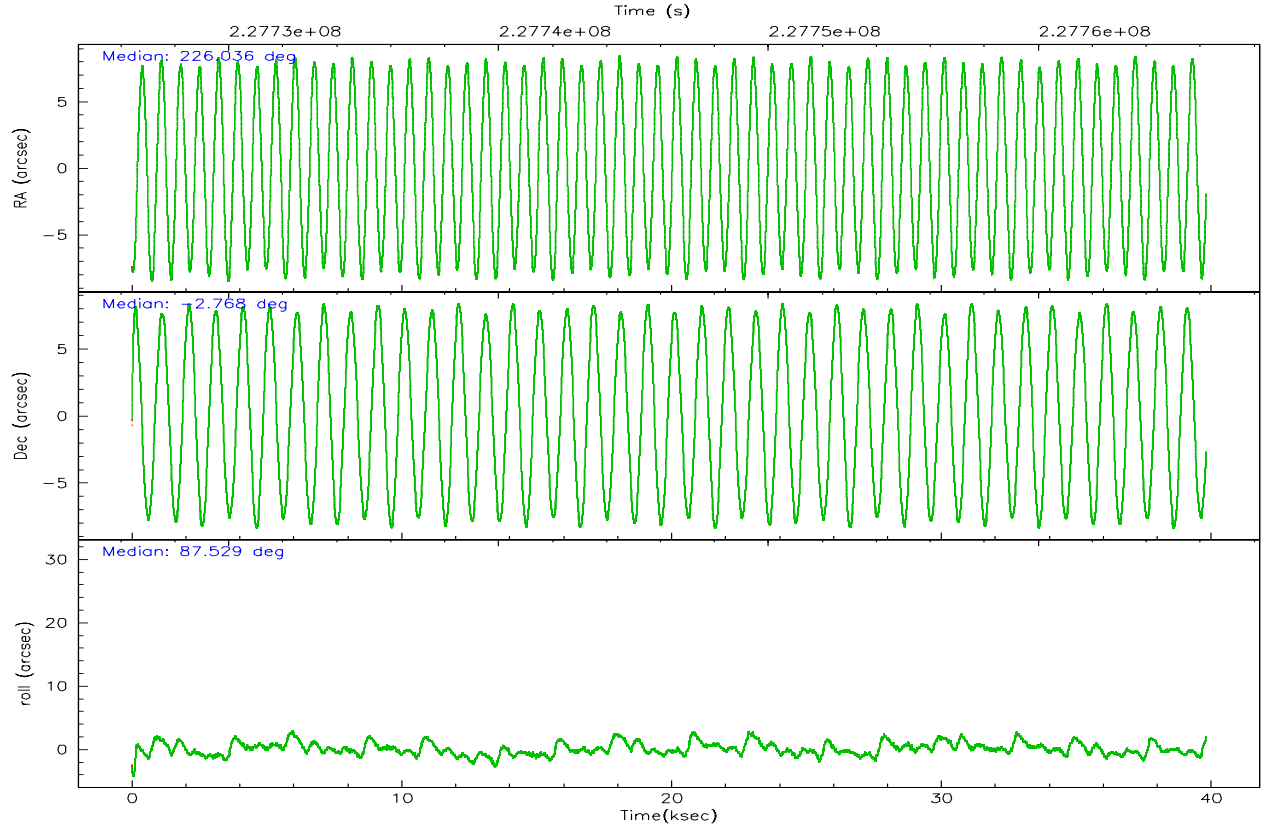
	ccd 0	ccd 1	ccd 2	ccd 3	ccd 6
grade 0 events	10555	13024	11759	113842	10722
	4%	5%	4%	30%	4%
grade 1 events	126	109	130	913	99
	0%	0%	0%	0%	0%
grade 2 events	6099	6410	6074	17691	5721
	2%	2%	2%	4%	2%
grade 3 events	2868	3177	2757	6607	2933
	1%	1%	1%	1%	1%
grade 4 events	2582	3164	2773	6600	2815
	1%	1%	1%	1%	1%
grade 5 events	8588	9164	8234	10540	9626
	3%	3%	3%	2%	3%
grade 6 events	4843	5767	4660	7747	5629
	2%	2%	1%	2%	2%
grade 7 events	195499	195865	231456	212307	209590
	84%	82%	86%	56%	84%

2.2 Compared Parameters

Parameter	Planned	Actual	Parameter	Planned	Actual
Instrument	ACIS	ACIS	Obspar format version number	6	6
Detector	ACIS-01236	ACIS-01236	Obspar file type	PREDICTED	ACTUAL
Grating	NONE	NONE	Obspar update status	NONE	UPDATED
Data mode	VFAINT	VFAINT	On-chip summing requested	N	N
Observation mode	POINTING	POINTING	Subarray requested	NONE	NONE
Pointing RA	226.048408	226.0356200442287	Alternating exposures requested	N	N
Pointing Dec	-2.791747	-2.767531341765364	Primary exposure time	0.000000	3.1
Pointing Roll	87.329484	87.53755349483644			
SIM focus pos (mm)	-0.782348	-0.7809083437167272			
SIM defocus (mm)	0	0.001439871863259334			
SIM translation stage pos (mm)	-227.592463	-227.5933067819097			
SIM translation stage offset (mm)	-6	-5.999146221020027			
Observation start time	227726603.184000	227725669.76952			
Observation start date	2005-03-20T17:22:19	2005-03-20T17:07:49			
Observation end time	227766227.184000	227766458.10887			
Observation end date	2005-03-21T04:22:43	2005-03-21T04:27:38			
Read mode	TIMED	TIMED			

2.3 Aspect



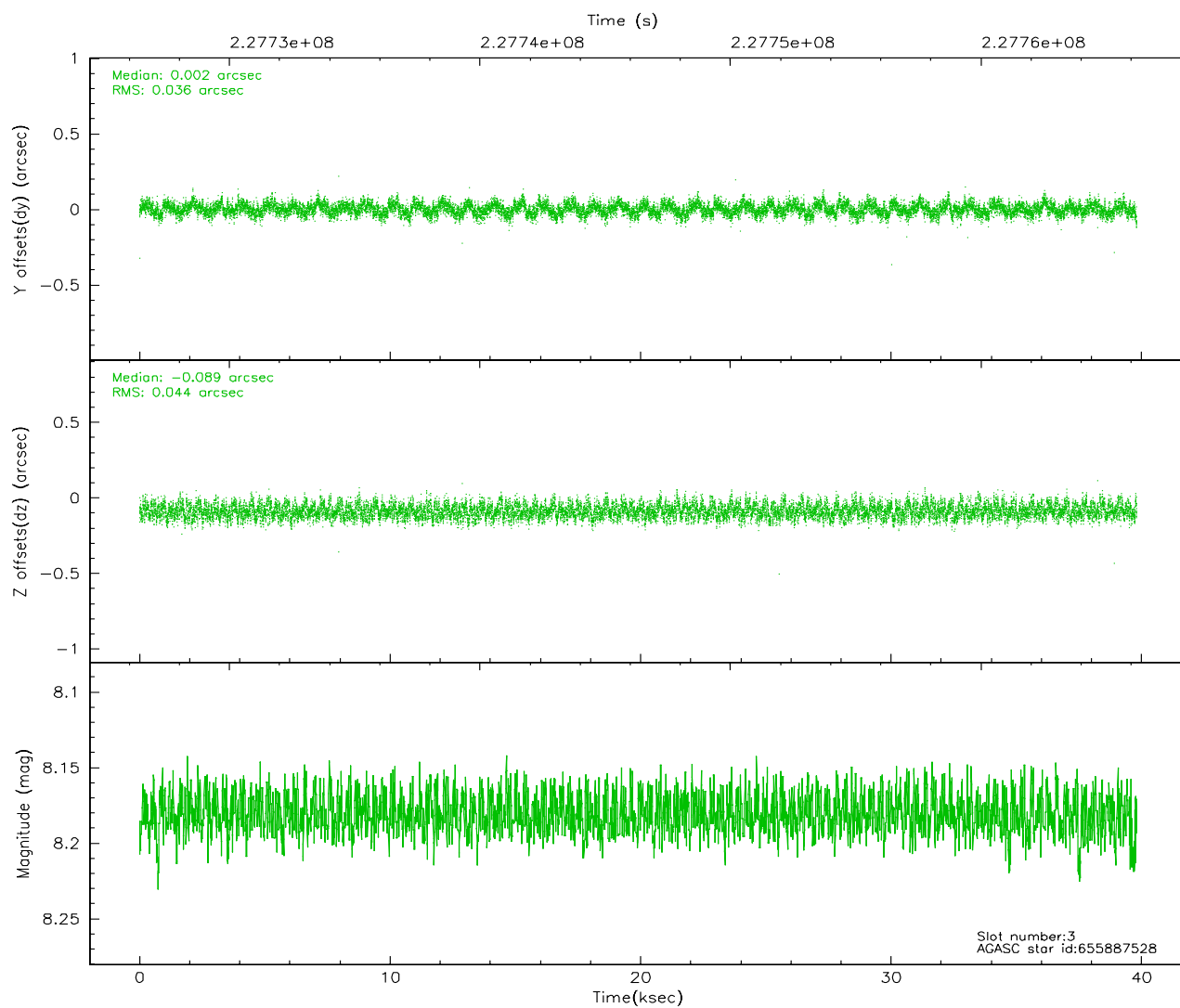
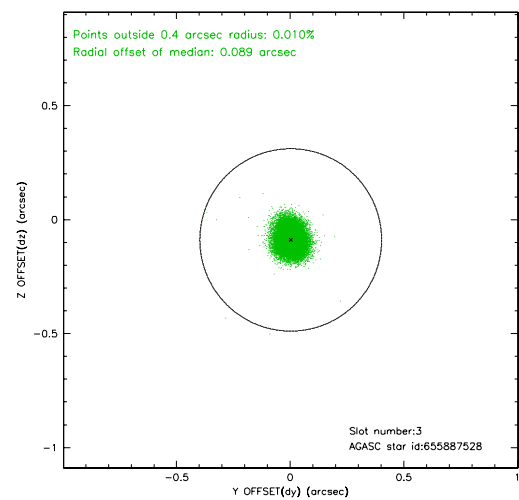
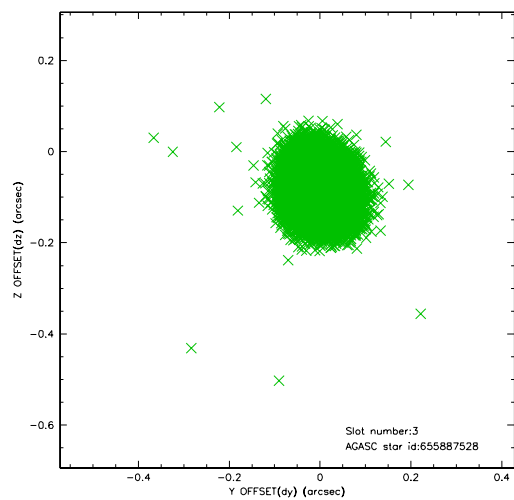


Slot Statistics

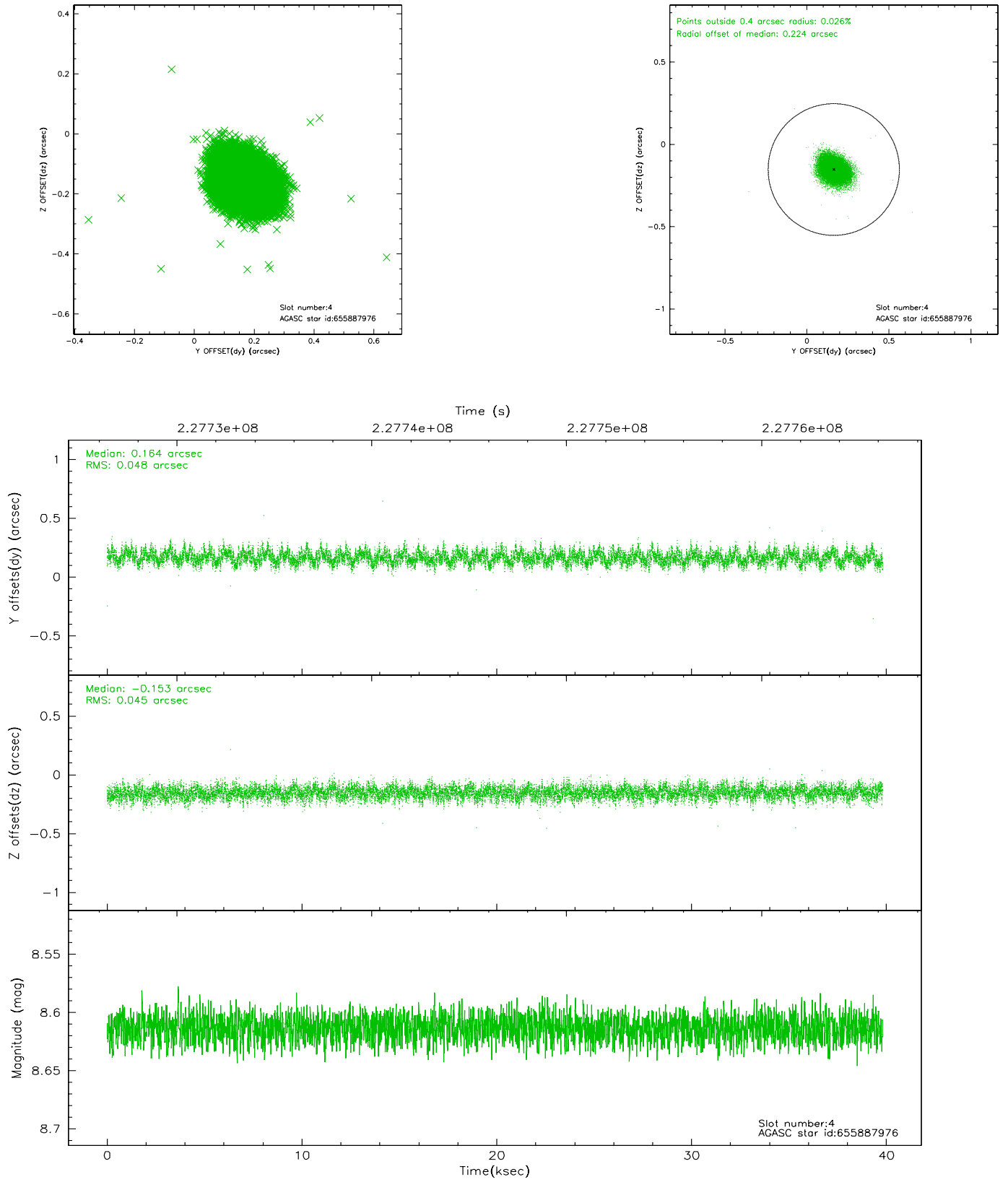
slot	status	id	mag	n_pts	med_dy	med_dz	dr1	dr2	ra	dec	mean_y	mean_z
0	FID	ACIS-I-1	7.24	9710	0.065	-0.023	0.006	0.010	0.000000	0.000000	932.63	-956.15
1	FID	ACIS-I-5	7.23	9709	-0.190	0.077	0.006	0.010	0.000000	0.000000	-1815.72	941.42
2	FID	ACIS-I-6	7.25	9710	0.033	0.017	0.007	0.011	0.000000	0.000000	398.13	1585.89
3	GUIDE	655887528	8.18	19417	0.002	-0.089	0.061	0.096	225.707931	-2.599687	633.37	1255.73
4	GUIDE	655887976	8.61	19360	0.164	-0.153	0.070	0.113	225.483318	-3.038087	-981.10	1987.63
5	GUIDE	655891488	6.98	19415	0.106	-0.010	0.067	0.108	225.686953	-3.031386	-922.58	1257.99
6	GUIDE	655887400	8.93	19400	-0.204	-0.029	0.078	0.129	225.974634	-2.124539	2386.88	377.42
7	GUIDE	655886288	8.10	19415	-0.072	0.279	0.073	0.119	226.751841	-2.297509	1895.30	-2444.20

2.4 Star Slots

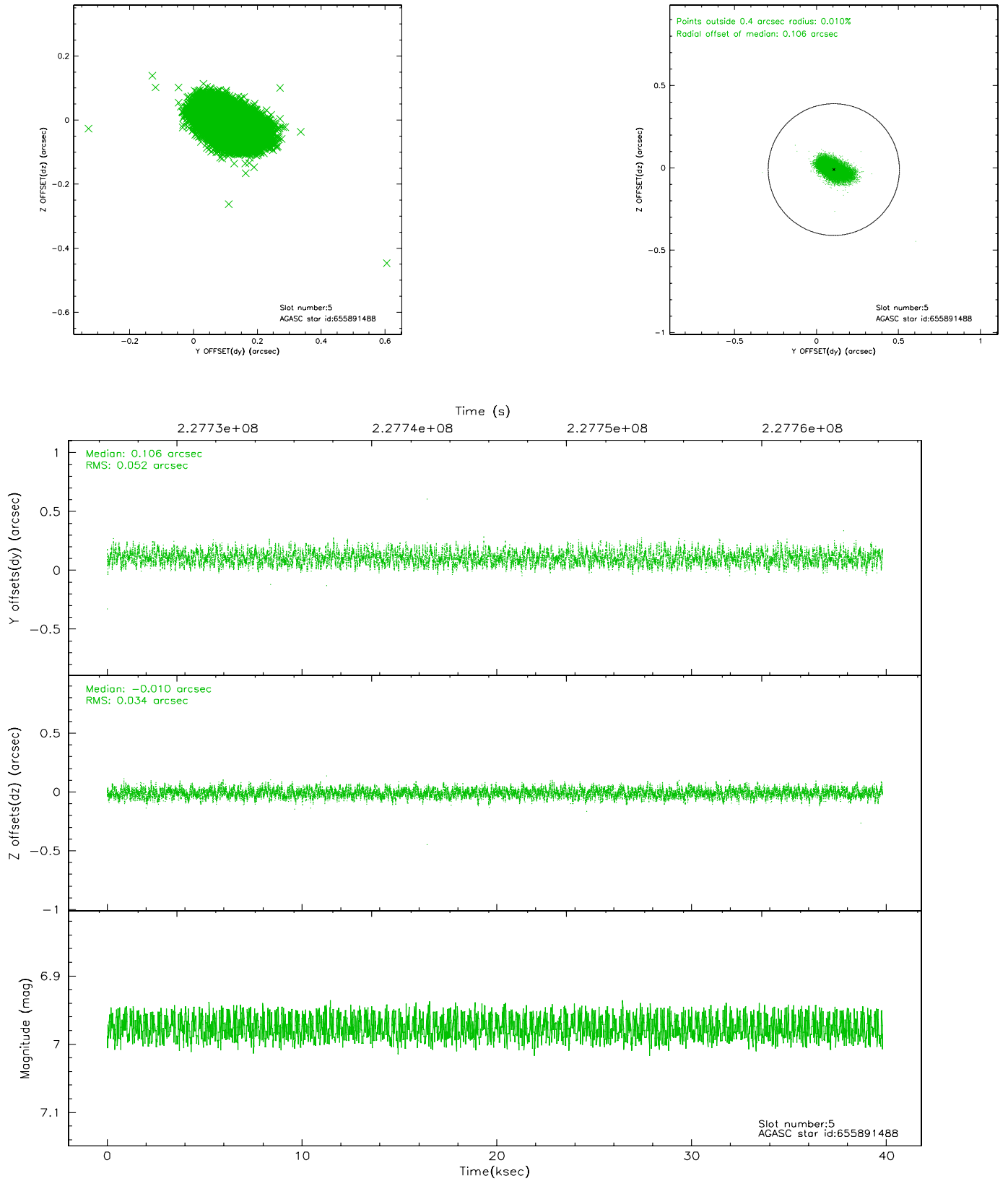
2.4.1 Slot 3



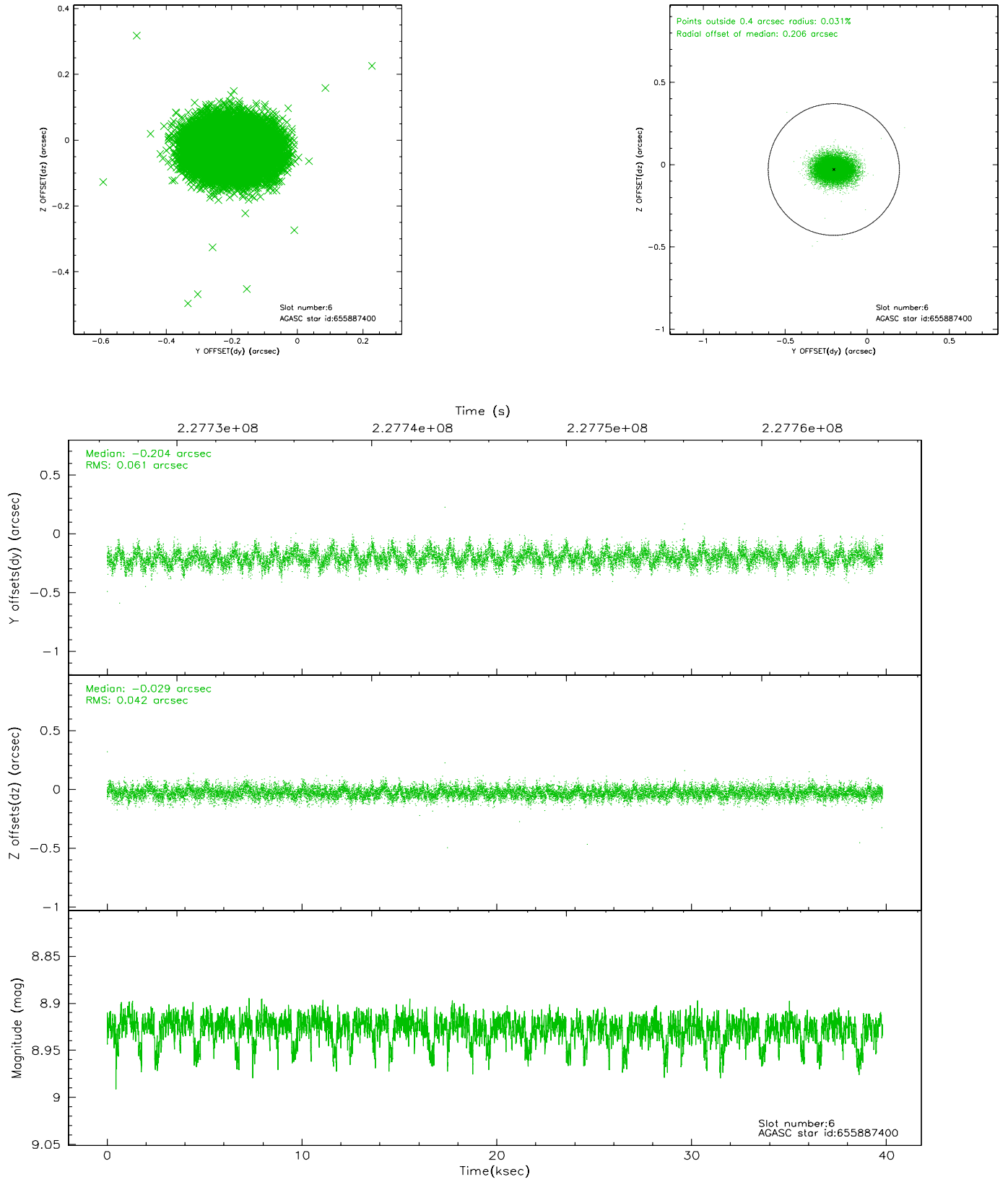
2.4.2 Slot 4



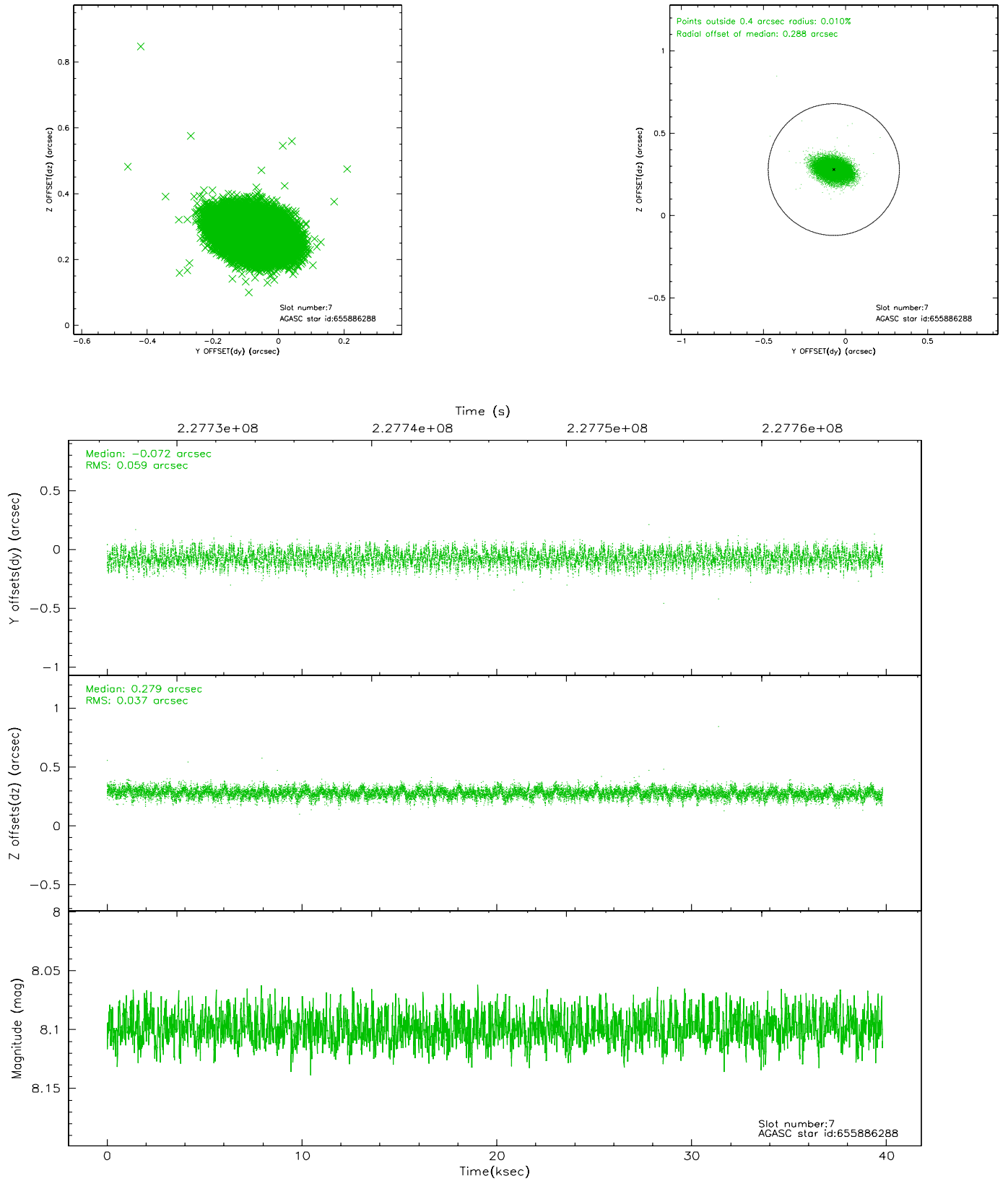
2.4.3 Slot 5



2.4.4 Slot 6

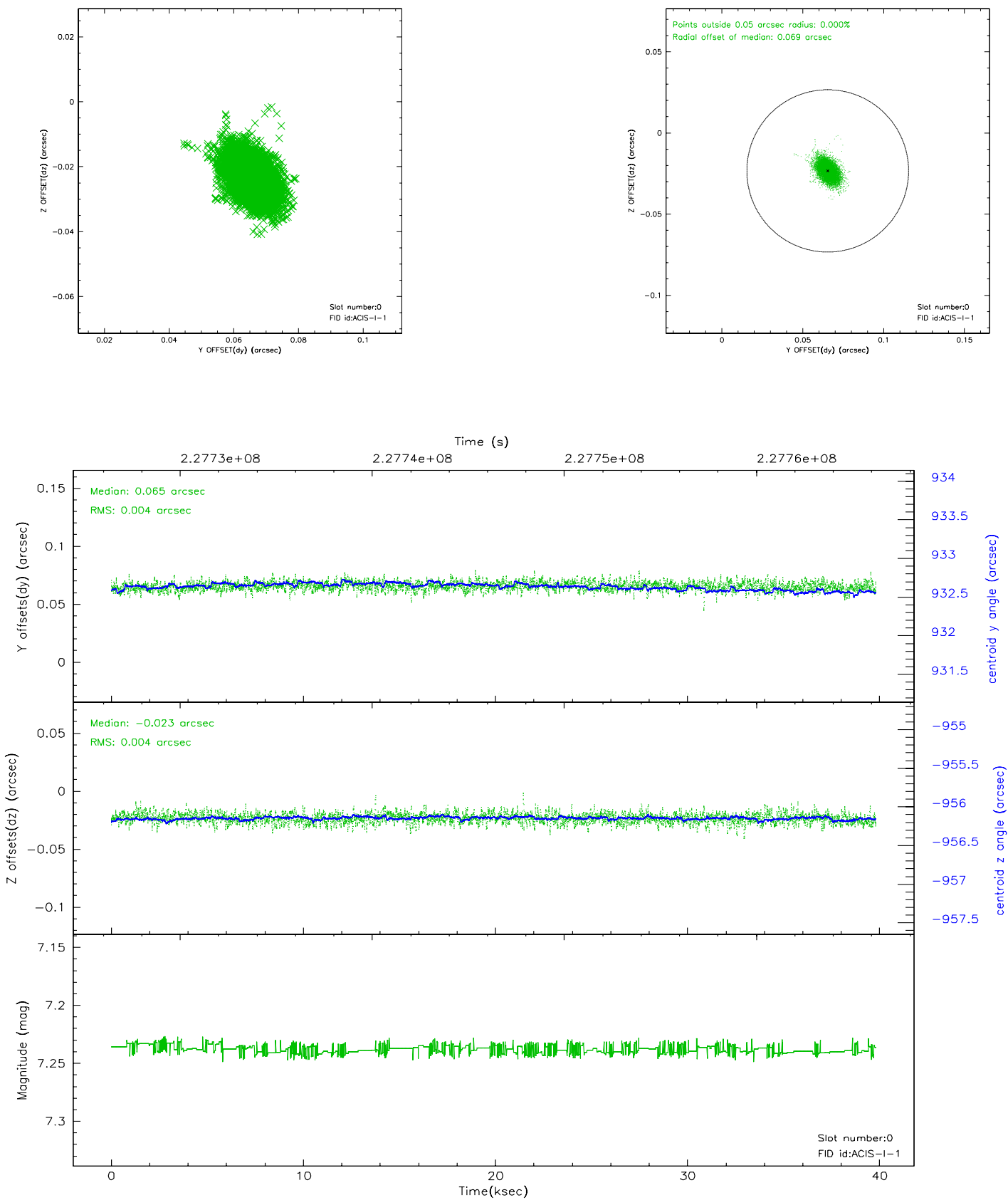


2.4.5 Slot 7

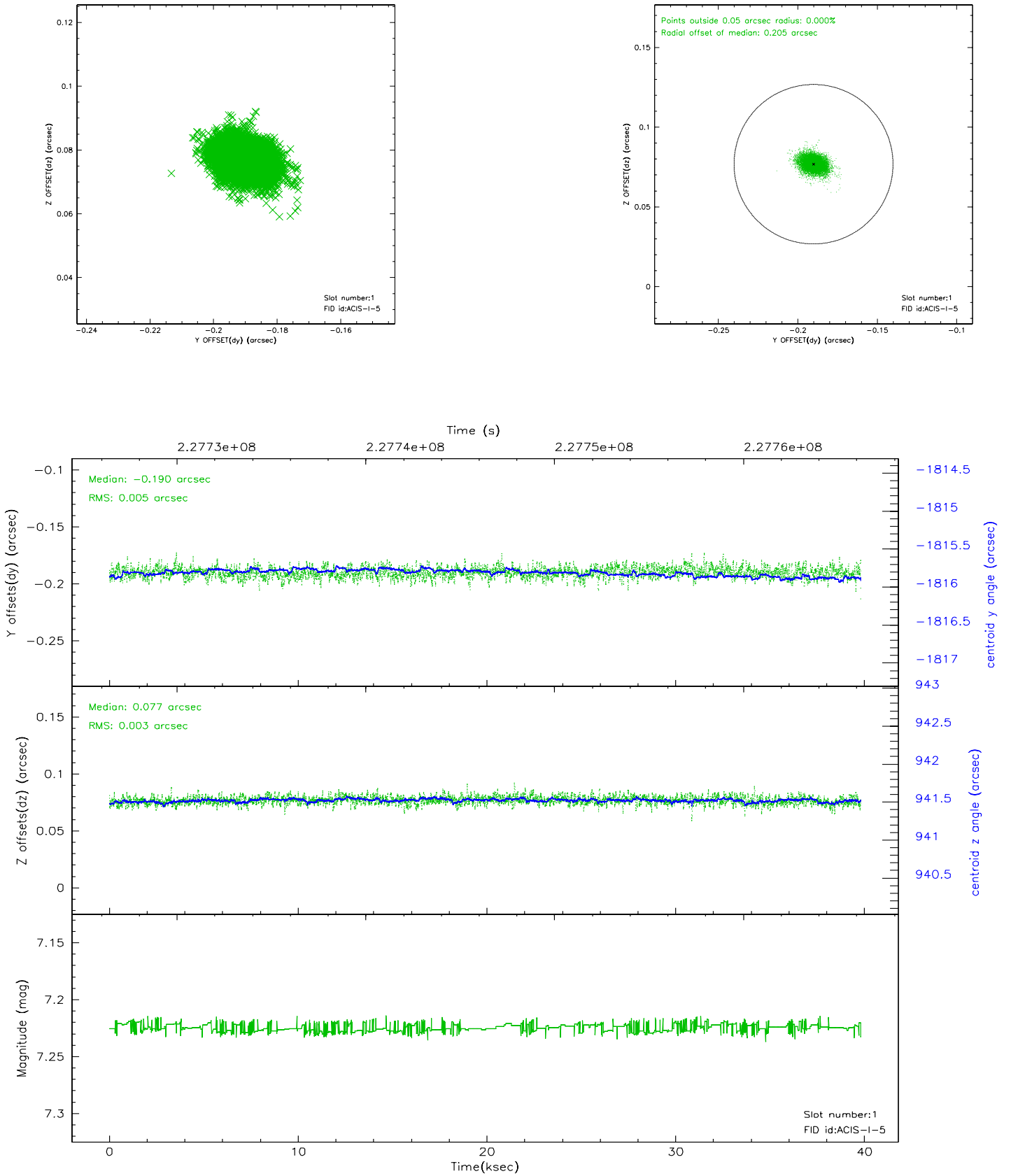


2.5 FID Slots

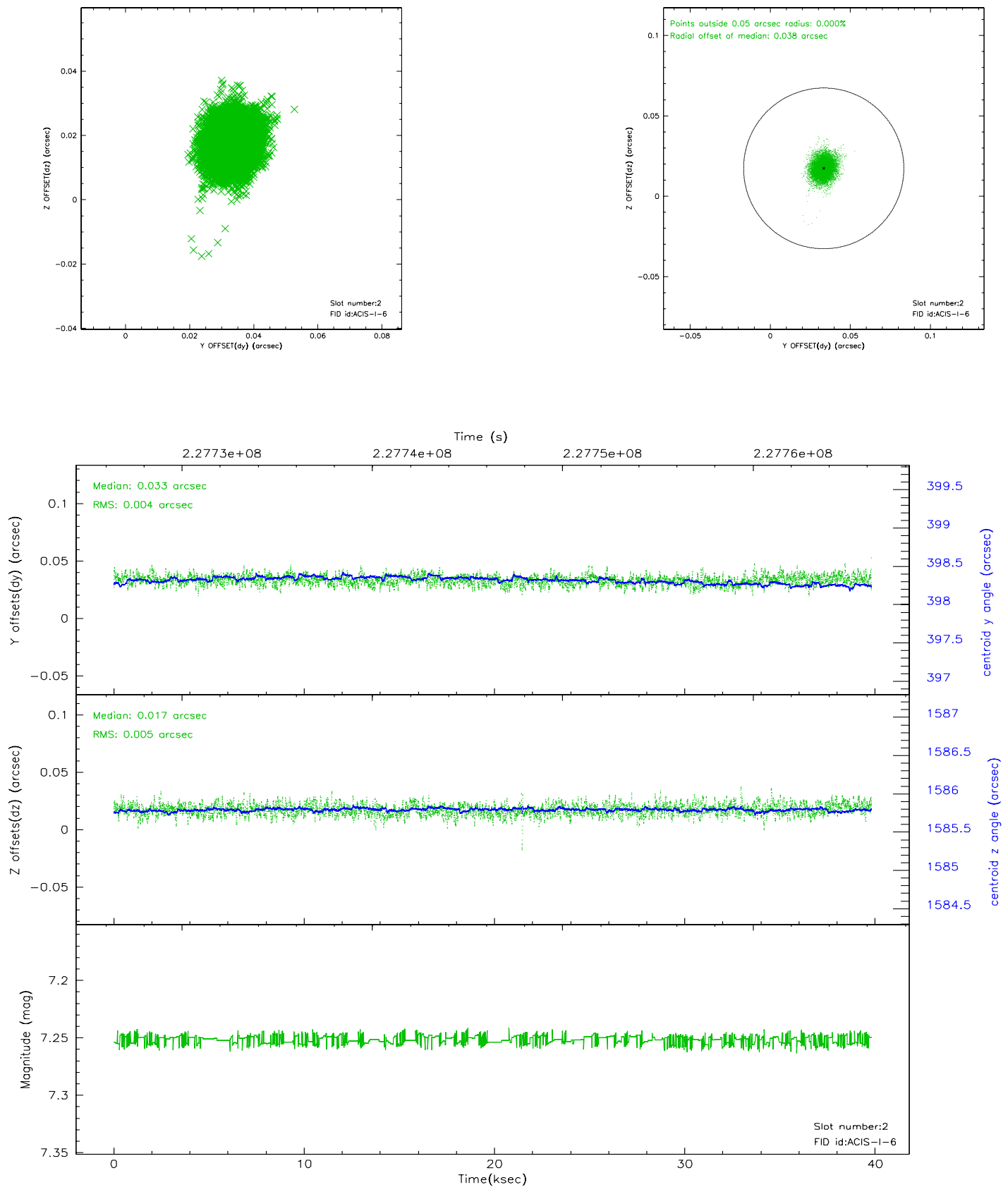
2.5.1 Slot 0



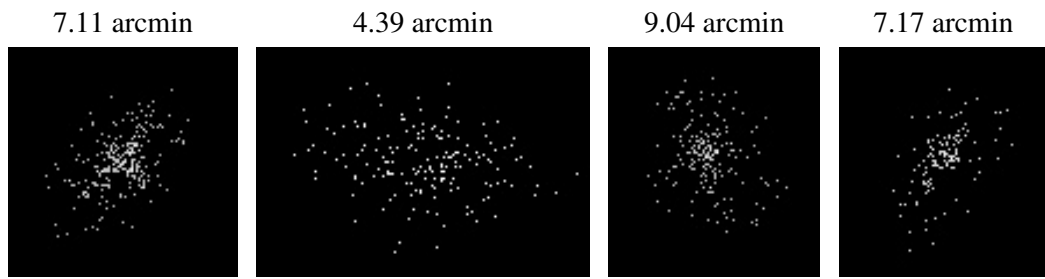
2.5.2 Slot 1



2.5.3 Slot 2



3 Point Sources



A Summary

A.1 Status

V&V Scientist	Jen Lauer
V&V Date (YYYY-MM-DD)	2006.02.27
V&V Edition	1
V&V Disposition and Status	OK
V&V Charge Time	39.67367

A.2 Comments