

# V&V Reference Report

## L2 ASCDS Version : 8.4.4

Observation 57553 - L2 Version 2  
Chandra X-Ray Center

L2 Processing Date : May 22 2012

## Contents

<b>1</b>	<b>Front</b>	<b>2</b>
<b>2</b>	<b>OBI</b>	<b>3</b>
2.1	OBI . . . . .	3
2.1.1	Images . . . . .	3
2.1.2	Bias . . . . .	3
2.1.3	Parameters . . . . .	4
2.1.4	Events . . . . .	4
2.2	Compared Parameters . . . . .	5
2.3	Star Slots . . . . .	6
2.4	FID Slots . . . . .	6
<b>A</b>	<b>Summary</b>	<b>7</b>
A.1	Status . . . . .	7
A.2	Comments . . . . .	7

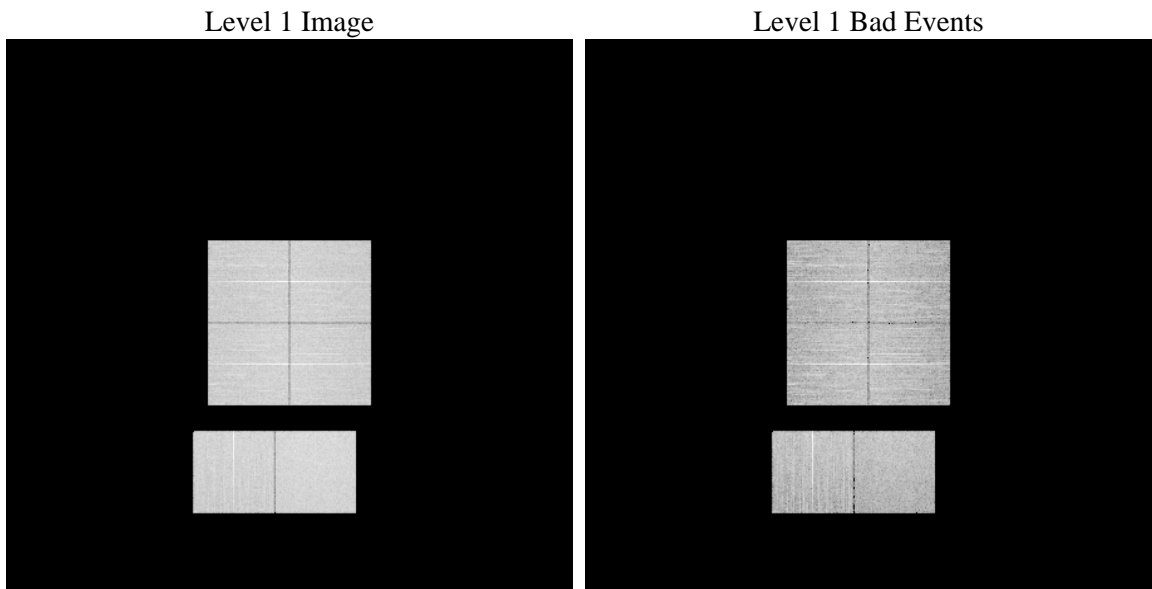
# 1 Front

seq_num	&#160	Sequence number
obs_id	57553	Observation id
title	ACIS-012367 diagnostics	Proposal title
observer	CHANDRA engineering request/realtime commanding	Principal investig
object	&#160	Source name
dtcycle	0	&#160
cycle	P	events from which exps? Prim/Second/Both
ra_targ	0.0	Observer's specified target RA [deg]
dec_targ	0.0	Observer's specified target Dec [deg]
ra_nom	30.025958555512	Nominal RA [deg]
dec_nom	-13.479279838636	Nominal Dec [deg]
roll_nom	24.711236867757	Nominal Roll [deg]
revision	2	Processing version of data
ontime	7734.3999712467	Sum of GTIs [s]
livetime	7636.4623417143	Livetime [s]
ontime0	7721.4360995889	Sum of GTIs [s]
ontime1	7734.3999712467	Sum of GTIs [s]
ontime2	7724.6466723084	Sum of GTIs [s]
ontime3	7734.3999712467	Sum of GTIs [s]
ontime6	7734.3284042478	Sum of GTIs [s]
ontime7	7734.3999712467	Sum of GTIs [s]
l2events	520881	Number of level 2 events

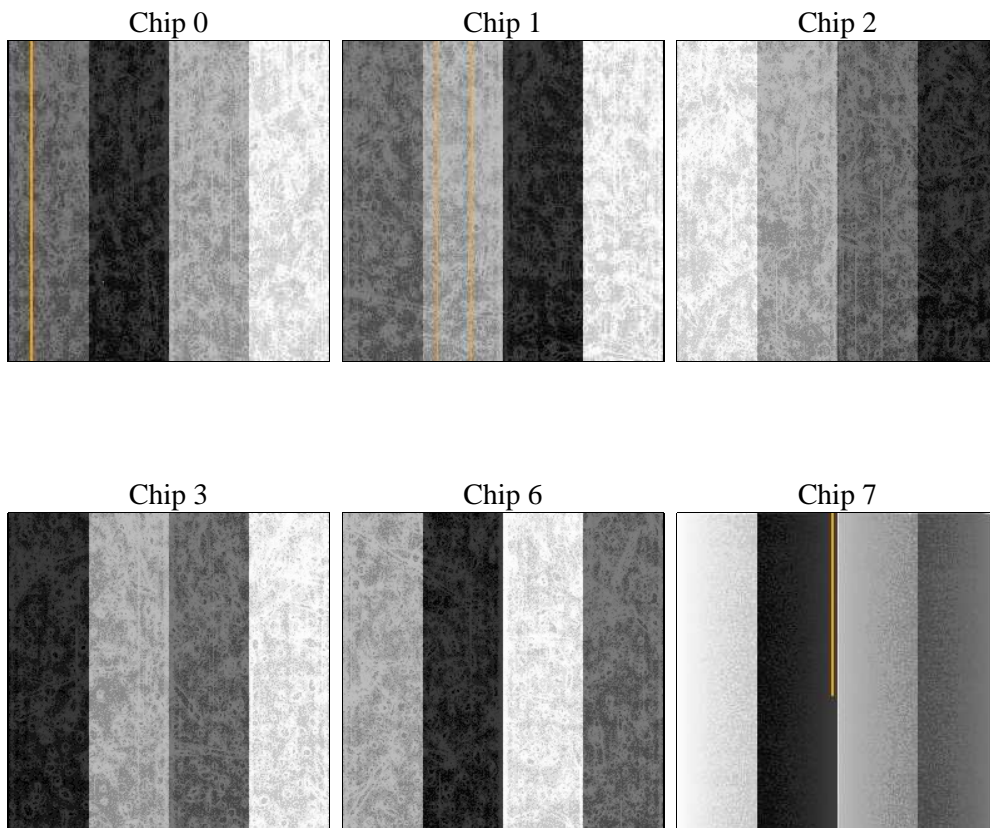
## 2 OBI

### 2.1 OBI

#### 2.1.1 Images



#### 2.1.2 Bias



### 2.1.3 Parameters

obi_num	0	Obi number	sched_exp_time	0.0	[s] Scheduled observation exposure time
ascdsver	8.4.4	Processing system revision	ontime	7734.3999712467	Sum of GTIs [s]
caldsver	4.4.9	&#160	ontime0	7721.4360995889	Sum of GTIs [s]
date	2012-05-22T23:08:45	Date and time of file creation	ontime1	7734.3999712467	Sum of GTIs [s]
revision	2	Processing version of data	ontime2	7724.6466723084	Sum of GTIs [s]
			ontime3	7734.3999712467	Sum of GTIs [s]
			ontime6	7734.3284042478	Sum of GTIs [s]
			ontime7	7734.3999712467	Sum of GTIs [s]
			l1events	957257	Number of level 1 events

### 2.1.4 Events

	ccd 0	ccd 1	ccd 2	ccd 3	ccd 6	ccd 7		ccd 0	ccd 1	ccd 2	ccd 3	ccd 6	ccd 7
level 1 events	150169	150785	158564	154972	160141	182626	grade 0 events	45360	45056	46412	46976	47283	23958
rejected events	65969	65290	73459	68893	70664	63068		30%	29%	29%	30%	29%	13%
rejected %	43%	43%	46%	44%	44%	34%	grade 1 events	322	257	402	338	290	175
								0%	0%	0%	0%	0%	0%
							grade 2 events	15015	15903	14712	15062	15764	25910
								9%	10%	9%	9%	9%	14%
							grade 3 events	5765	5605	5832	5845	5706	11144
								3%	3%	3%	3%	3%	6%
							grade 4 events	5502	5607	5786	5894	5790	11328
								3%	3%	3%	3%	3%	6%
							grade 5 events	3736	3835	3421	4085	4075	10524
								2%	2%	2%	2%	2%	5%
							grade 6 events	12585	13369	12402	12337	14963	47275
								8%	8%	7%	7%	9%	25%
							grade 7 events	61884	61153	69597	64435	66270	52312
								41%	40%	43%	41%	41%	28%

## 2.2 Compared Parameters

Parameter	Planned	Actual	Parameter	Planned	Actual
Instrument	ACIS	ACIS	Obspar format version number	7	7
Detector	ACIS-012367	ACIS-012367	Obspar file type	PREDICTED	ACTUAL
Grating	NONE	NONE	Obspar update status	NONE	UPDATED
Data mode	FAINT	FAINT	Number of optional ACIS chips dropped	0	0
Observation mode	SECONDARY	SECONDARY	On-chip summing requested	N	N
[deg] Pointing RA	0	30.02595855551183	Subarray requested	NONE	NONE
[deg] Pointing Dec	0	-13.479279838636	Alternating exposures requested	N	N
[deg] Pointing Roll	0.0	24.7112368677575	[s] Primary exposure time	3.2	3.2
[mm] SIM focus pos	-1.429586	-0.7809083437167272			
[mm] SIM defocus	0.1037507710433287	0.7524282956875696			
[mm] SIM translation stage pos	250.455976	250.466033080201			
[mm] SIM translation stage offset	0	-0.01005468664627074			
[s] Observation start time (MET)	340404601.889375	340404600.86438			
Observation start date	2008-10-14T20:50:02	2008-10-14T20:50:00			
[s] Observation end time (MET)	340420056.840137	340420055.81514			
Observation end date	2008-10-15T01:07:37	2008-10-15T01:07:35			
Read mode	TIMED	TIMED			

## 2.3 Star Slots

## 2.4 FID Slots

## A Summary

### A.1 Status

V&V Scientist	Jen Lauer
V&V Date (YYYY-MM-DD)	2012.05.30
V&V Edition	1
V&V Disposition and Status	OK
V&V Charge Time	7.7343999712467

### A.2 Comments