

# V&V Reference Report

## L2 ASCDS Version : 8.5.1.1

Observation 5753 - L2 Version 3  
Chandra X-Ray Center

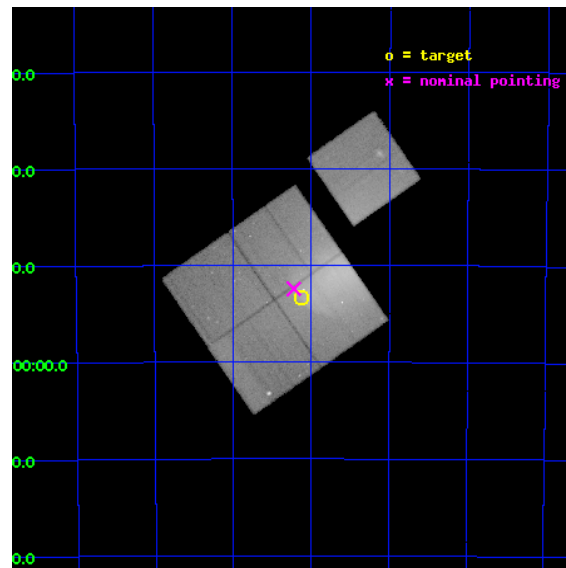
L2 Processing Date : Dec 25 2012

## Contents

<b>1</b>	<b>Front</b>	<b>2</b>
<b>2</b>	<b>OBI</b>	<b>3</b>
2.1	OBI . . . . .	3
2.1.1	Images . . . . .	3
2.1.2	Bias . . . . .	3
2.1.3	Parameters . . . . .	4
2.1.4	Events . . . . .	4
2.2	Compared Parameters . . . . .	5
2.3	Aspect . . . . .	6
2.4	Star Slots . . . . .	9
2.4.1	Slot 3 . . . . .	9
2.4.2	Slot 4 . . . . .	10
2.4.3	Slot 5 . . . . .	11
2.4.4	Slot 6 . . . . .	12
2.4.5	Slot 7 . . . . .	13
2.5	FID Slots . . . . .	14
2.5.1	Slot 0 . . . . .	14
2.5.2	Slot 1 . . . . .	15
2.5.3	Slot 2 . . . . .	16
<b>A</b>	<b>Summary</b>	<b>17</b>
A.1	Status . . . . .	17
A.2	Comments . . . . .	17

# 1 Front

seq_num	800466	Sequence number
obs_id	5753	Observation id
title	A CHANDRA TREASURY OBSERVATION OF THE BEST EXAMPLE OF A CLUSTER COLD FRONT	Proposal title
observer	Dr. Alexey Vikhlinin	Principal investigator
object	Abell 3667	Source name
dtcycle	0	&#160
cycle	P	events from which exps? Prim/Second/Both
ra_targ	303.280208	Observer's specified target RA [deg]
dec_targ	-56.89	Observer's specified target Dec [deg]
ra_nom	303.30490118145	Nominal RA [deg]
dec_nom	-56.873865532977	Nominal Dec [deg]
roll_nom	55.221264554737	Nominal Roll [deg]
revision	3	Processing version of data
ontime	105004.65493521	Sum of GTIs [s]
livetime	103632.69181518	Livetime [s]
ontime0	104998.24985468	Sum of GTIs [s]
ontime1	105004.57284537	Sum of GTIs [s]
ontime2	104992.04987469	Sum of GTIs [s]
ontime3	105004.65493521	Sum of GTIs [s]
ontime6	105023.33668688	Sum of GTIs [s]
l2events	775822	Number of level 2 events

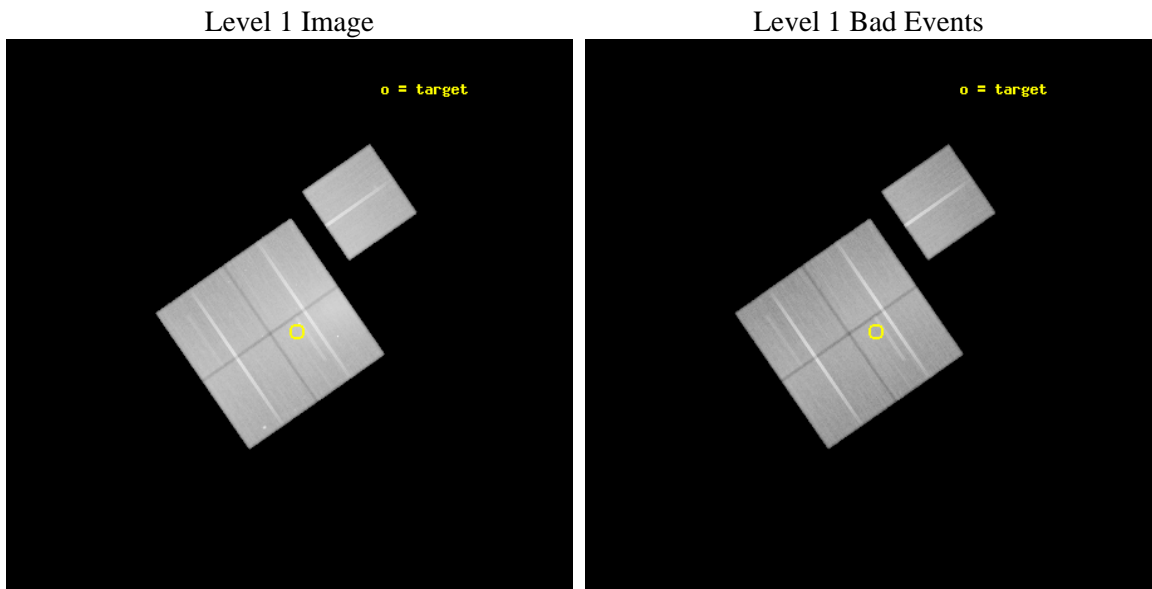




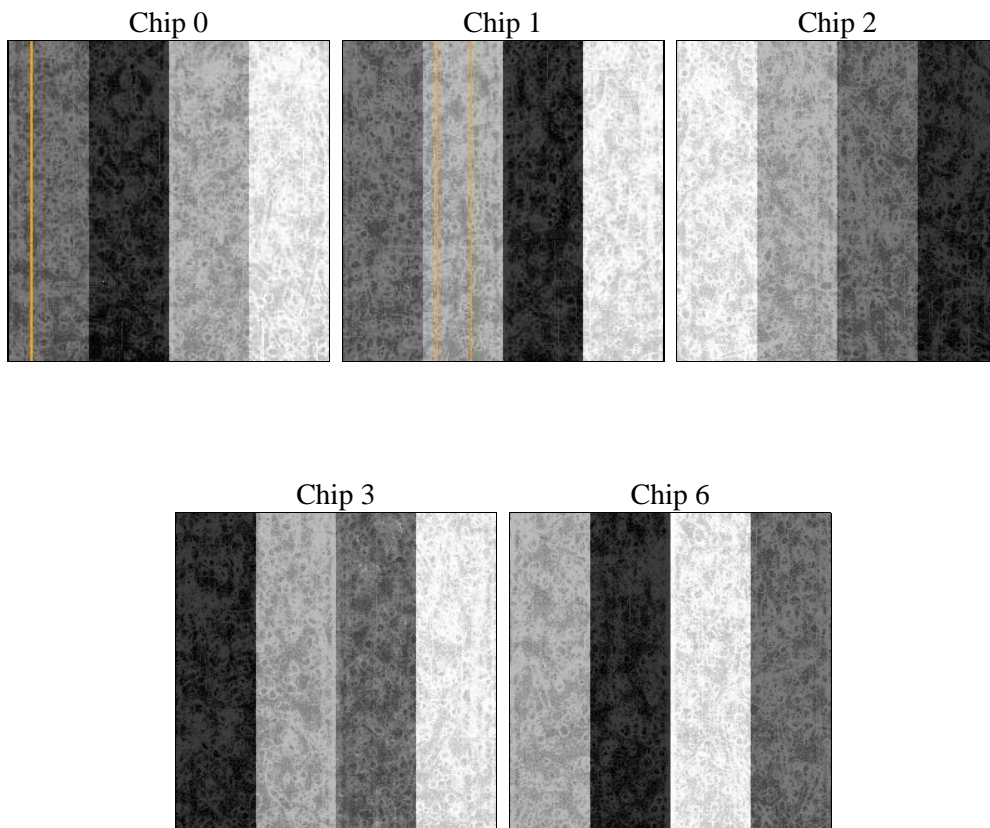
## 2 OBI

### 2.1 OBI

#### 2.1.1 Images



#### 2.1.2 Bias



### 2.1.3 Parameters

obi_num	0	Obi number	sched_exp_time	105000.000000	[s] Scheduled observation exposure time
ascdsver	8.5.1.1	Processing system revision	ontime	105004.65493521	Sum of GTIs [s]
caldsver	4.5.5	&#160	ontime0	104998.24985468	Sum of GTIs [s]
date	2012-12-25T07:56:16	Date and time of file creation	ontime1	105004.57284537	Sum of GTIs [s]
revision	3	Processing version of data	ontime2	104992.04987469	Sum of GTIs [s]
			ontime3	105004.65493521	Sum of GTIs [s]
			ontime6	105023.33668688	Sum of GTIs [s]
			l1events	4411224	Number of level 1 events

### 2.1.4 Events

	ccd 0	ccd 1	ccd 2	ccd 3	ccd 6
level 1 events	762576	776064	946486	1051427	874671
rejected events	656729	658901	772040	730630	722757
rejected %	86%	84%	81%	69%	82%

	ccd 0	ccd 1	ccd 2	ccd 3	ccd 6
grade 0 events	50953	57818	108314	230358	88029
	6%	7%	11%	21%	10%
grade 1 events	527	489	913	1744	620
	0%	0%	0%	0%	0%
grade 2 events	21571	21790	27601	39444	24388
	2%	2%	2%	3%	2%
grade 3 events	9327	10311	11098	15404	10778
	1%	1%	1%	1%	1%
grade 4 events	8825	9873	11402	15629	10502
	1%	1%	1%	1%	1%
grade 5 events	23544	25465	22868	27861	26359
	3%	3%	2%	2%	3%
grade 6 events	15173	17377	16039	19984	18228
	1%	2%	1%	1%	2%
grade 7 events	632656	632941	748251	701003	695767
	82%	81%	79%	66%	79%

## 2.2 Compared Parameters

Parameter	Planned	Actual	Parameter	Planned	Actual
Instrument	ACIS	ACIS	Obspar format version number	7	7
Detector	ACIS-01236	ACIS-01236	Obspar file type	PREDICTED	ACTUAL
Grating	NONE	NONE	Obspar update status	NONE	UPDATED
Data mode	VFAINT	VFAINT	Number of optional ACIS chips dropped	0	0
Observation mode	POINTING	POINTING	On-chip summing requested	N	N
[deg] Pointing RA	303.300906	303.3049011814459	Subarray requested	NONE	NONE
[deg] Pointing Dec	-56.901170	-56.87386553297671	Alternating exposures requested	N	N
[deg] Pointing Roll	55.009236	55.22126455473727	[s] Primary exposure time	0.000000	3.1
[mm] SIM focus pos	-0.782348	-0.7809083437167272			
[mm] SIM defocus	0	0.001439871863259334			
[mm] SIM translation stage pos	-228.592463	-228.5990329025337			
[mm] SIM translation stage offset	-5	-4.993420100396037			
[s] Observation start time (MET)	235372561.184000	235371366.00502			
Observation start date	2005-06-17T05:14:57	2005-06-17T04:56:06			
[s] Observation end time (MET)	235477561.184000	235479050.45993			
Observation end date	2005-06-18T10:24:57	2005-06-18T10:50:50			
Read mode	TIMED	TIMED			

## 2.3 Aspect

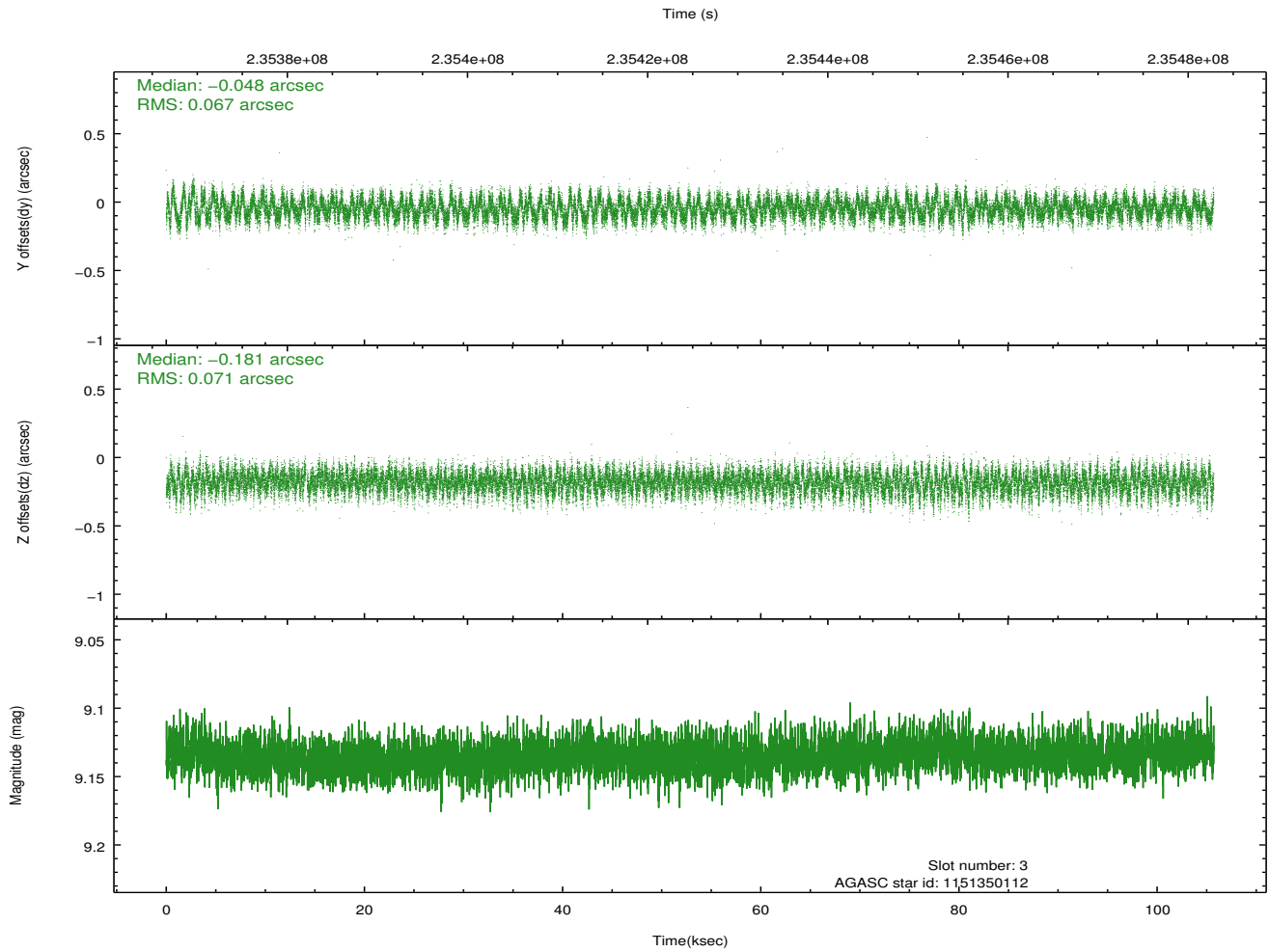


### Slot Statistics

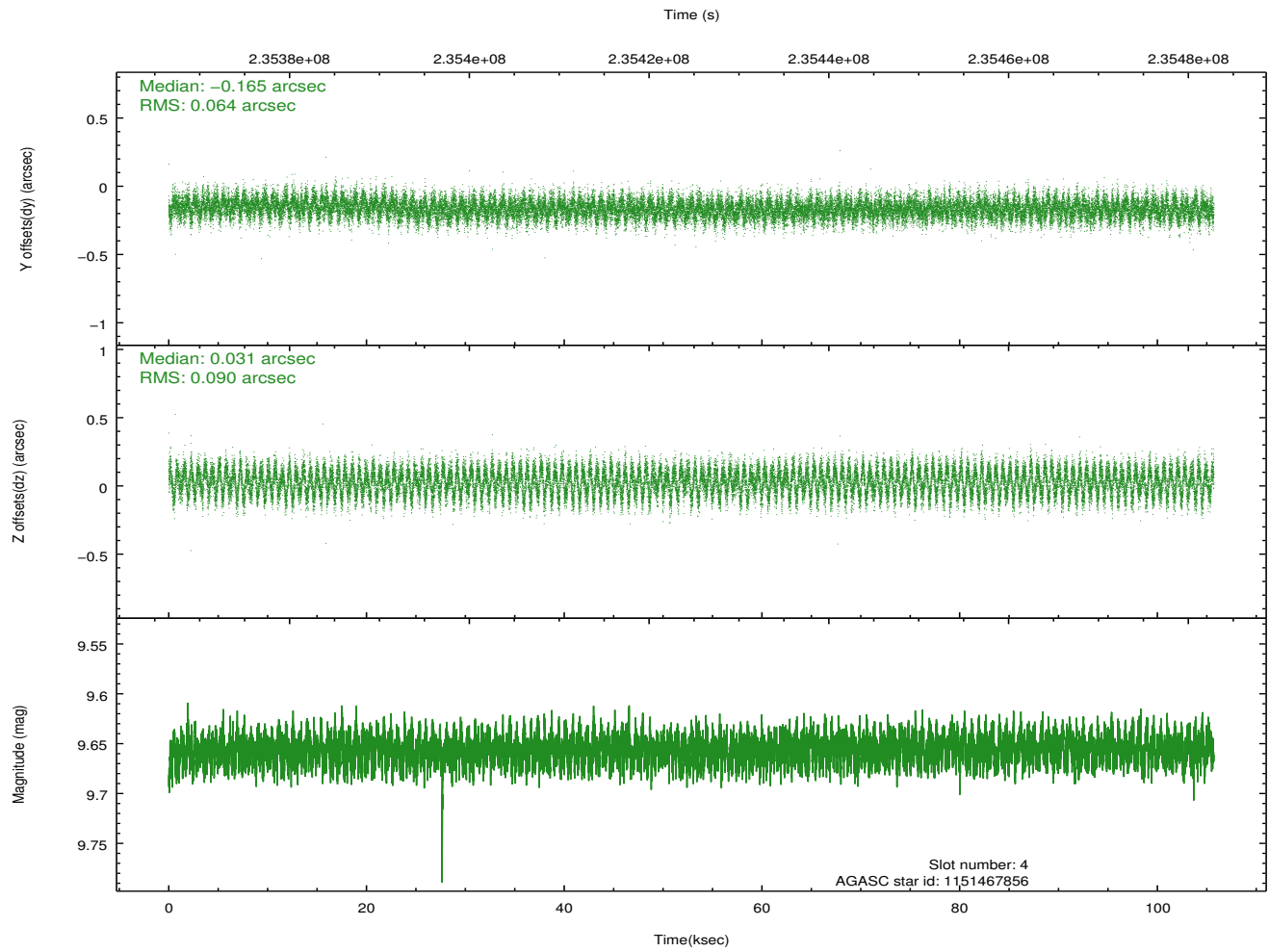
slot	status	id	mag	n_pts	med_dy	med_dz	dr1	dr2	ra	dec	mean_y	mean_z
0	FID	ACIS-I-1	7.23	25785	0.099	-0.029	0.017	0.032	0.000000	0.000000	933.87	-935.55
1	FID	ACIS-I-5	7.22	25785	-0.230	0.102	0.017	0.038	0.000000	0.000000	-1814.59	962.17
2	FID	ACIS-I-6	7.25	25782	0.042	-0.001	0.010	0.021	0.000000	0.000000	399.51	1606.43
3	GUIDE	1151350112	9.13	51457	-0.048	-0.181	0.105	0.163	303.241865	-56.846660	94.28	207.75
4	GUIDE	1151467856	9.66	51519	-0.165	0.031	0.118	0.189	303.931677	-56.775960	1078.22	-763.91
5	GUIDE	1151472992	9.62	51519	-0.062	0.209	0.108	0.171	303.531180	-57.237033	-733.70	-1060.93
6	GUIDE	1151340776	9.07	51550	0.074	-0.029	0.082	0.137	302.320116	-57.331751	-2373.68	664.77
7	GUIDE	1151471240	9.45	51506	0.202	-0.016	0.089	0.145	303.425045	-57.451391	-1484.66	-1332.80

## 2.4 Star Slots

### 2.4.1 Slot 3

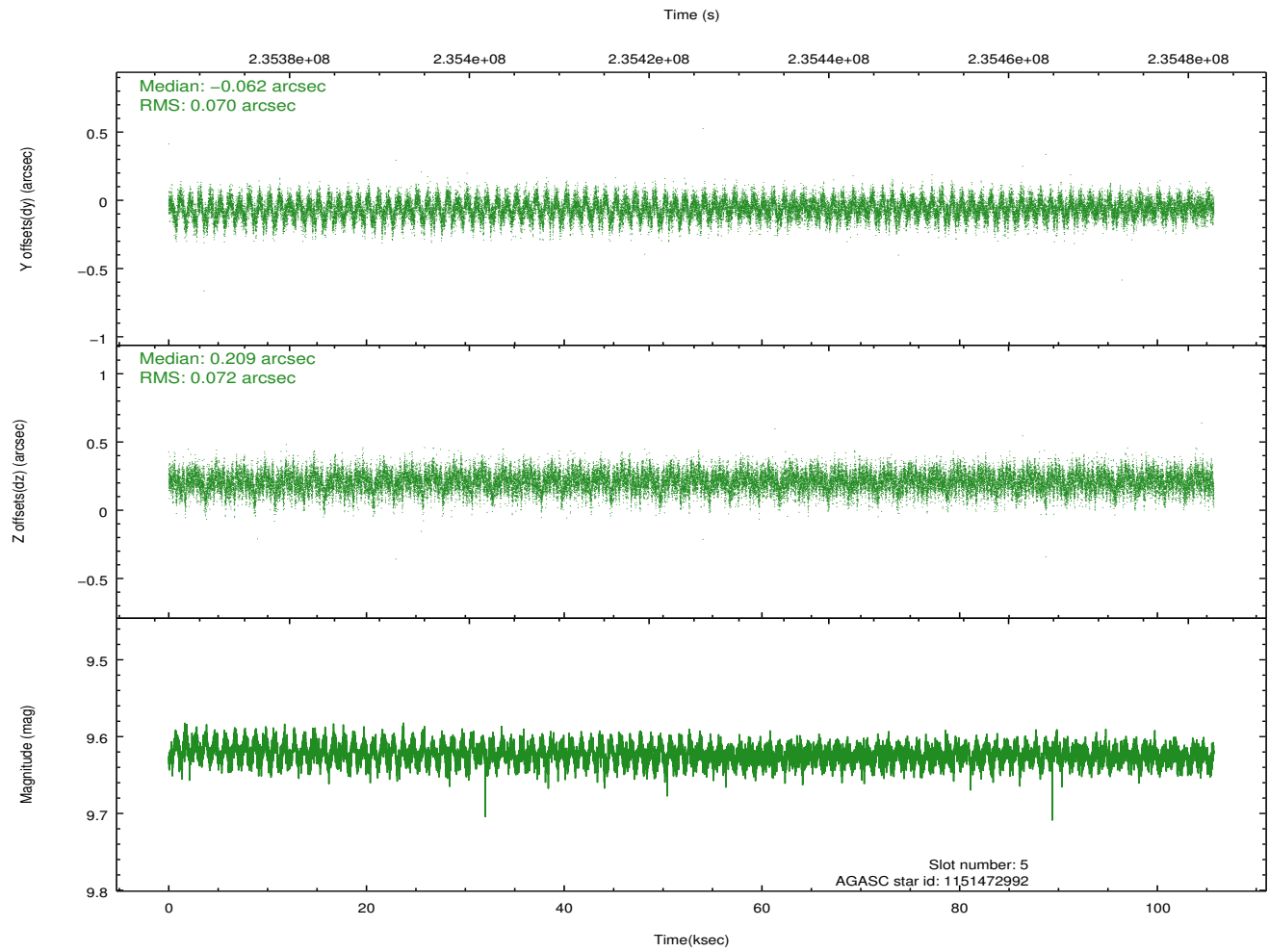


## 2.4.2 Slot 4

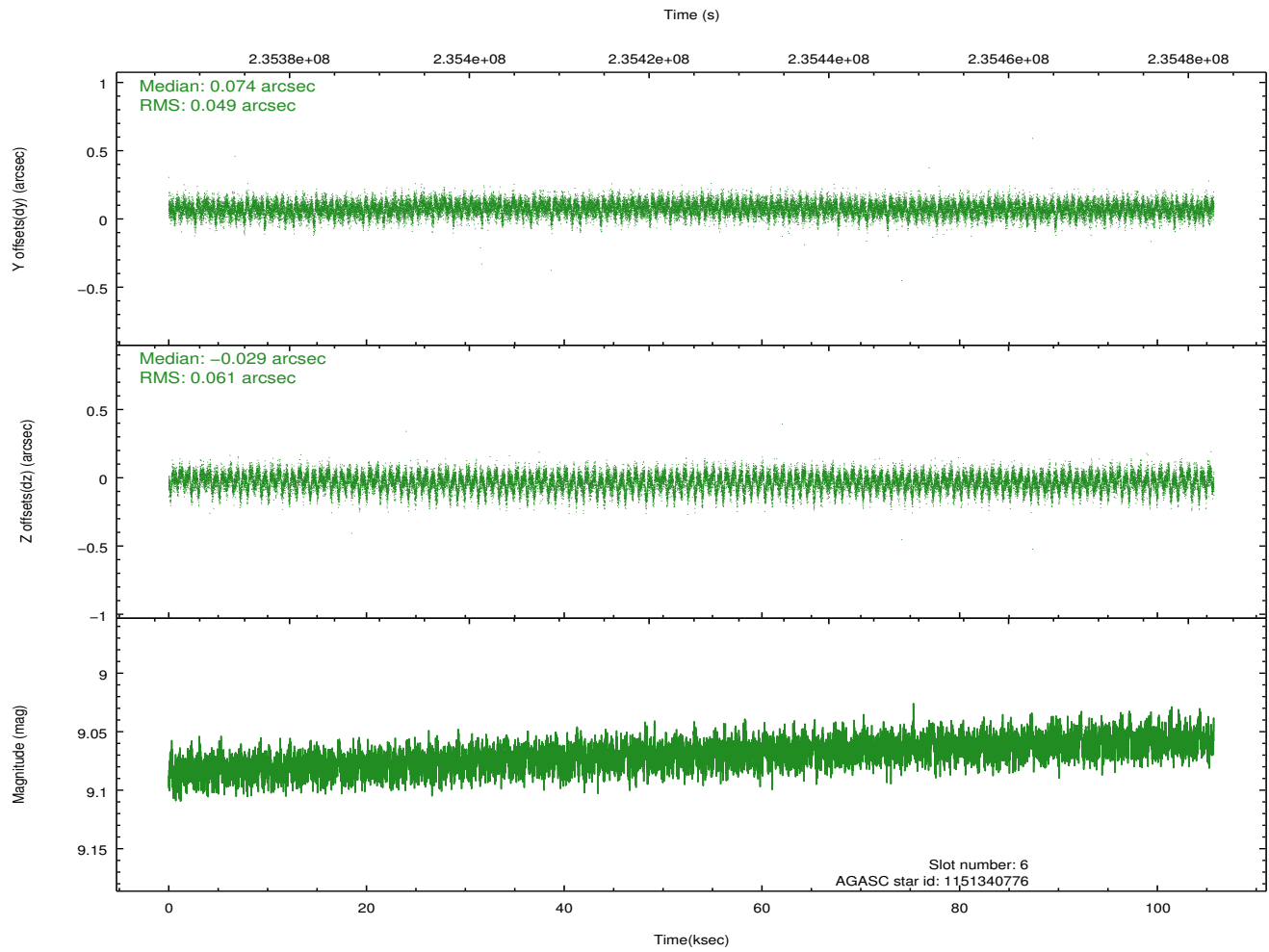




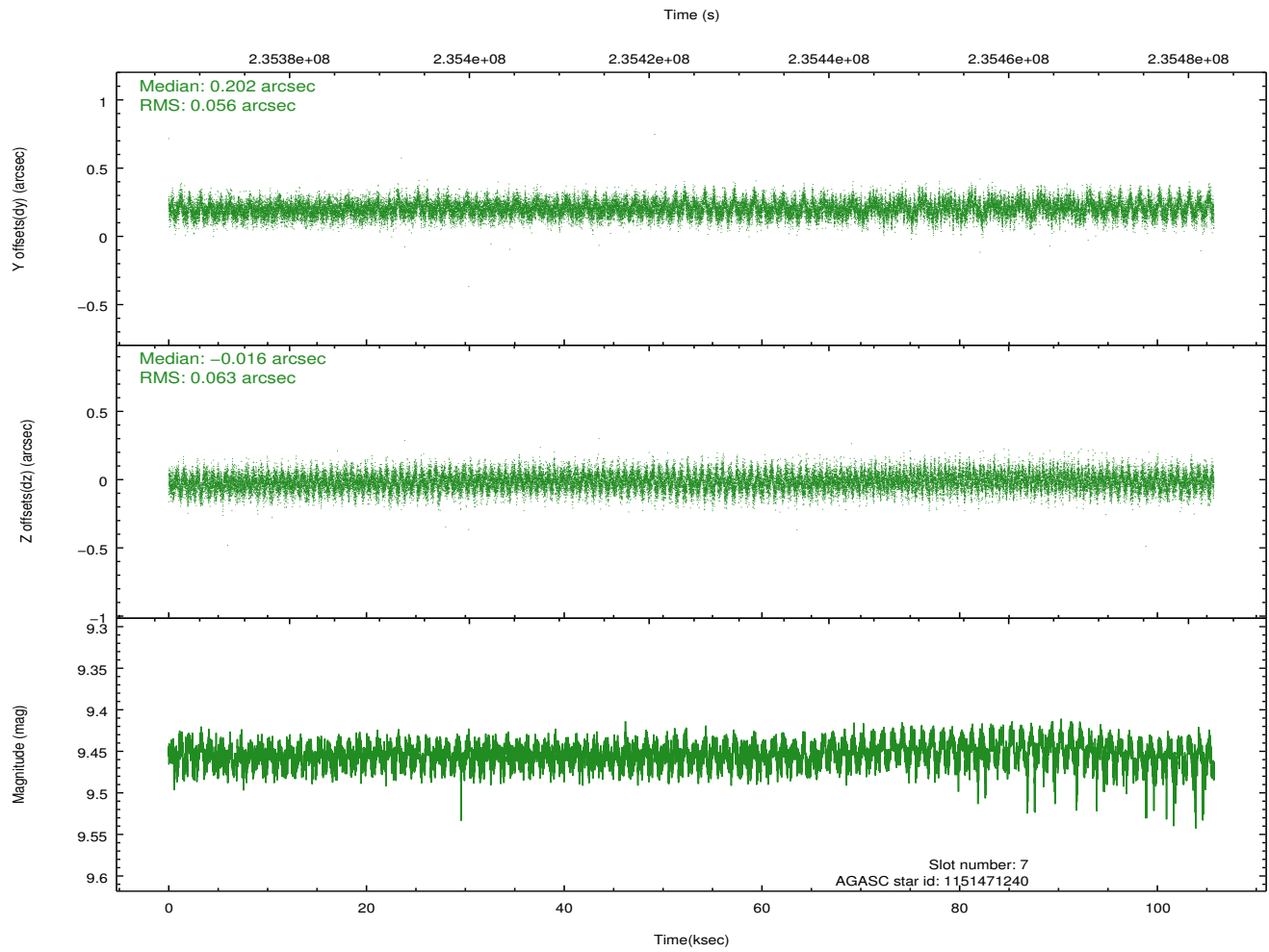
### 2.4.3 Slot 5



## 2.4.4 Slot 6

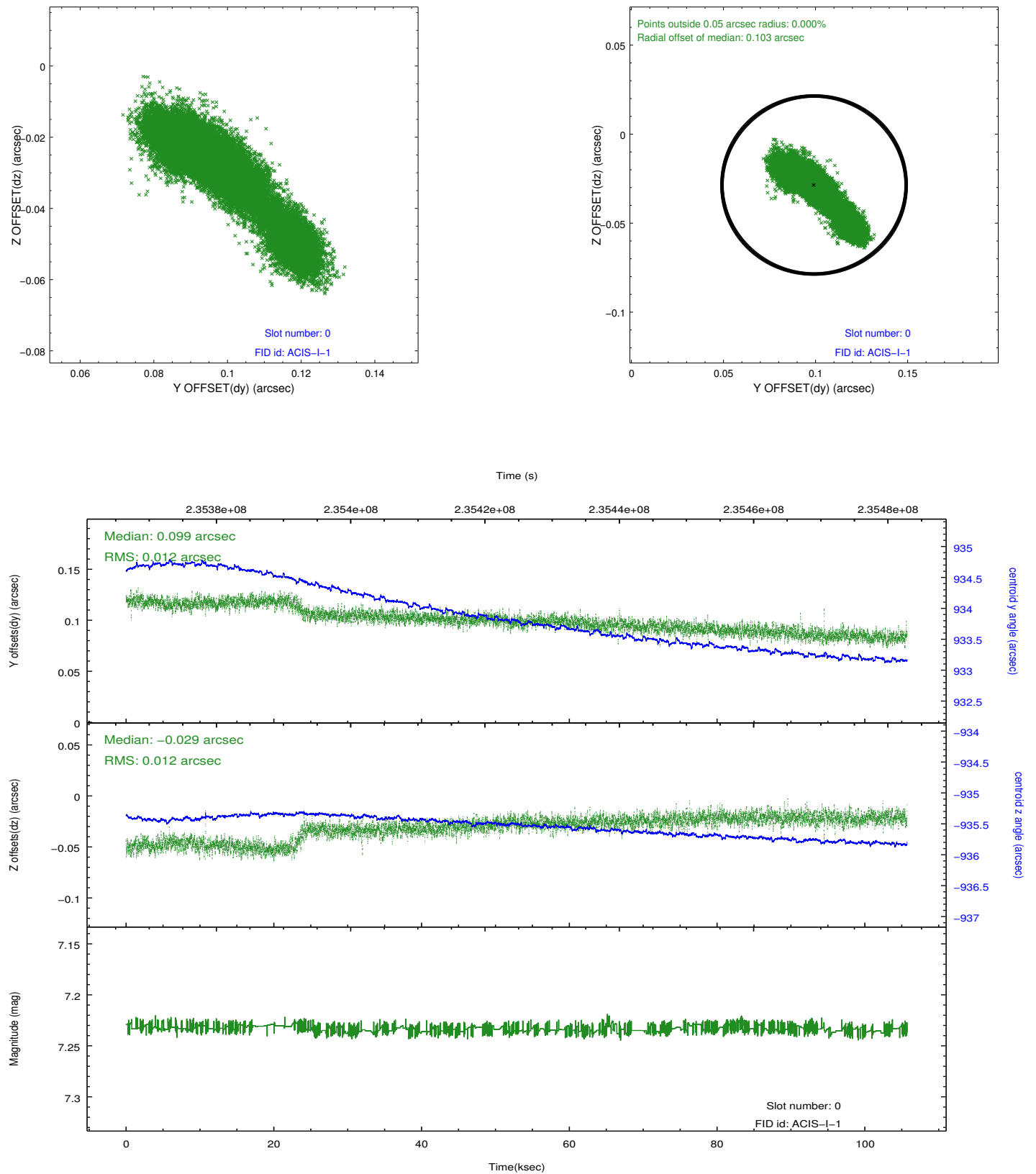


### 2.4.5 Slot 7

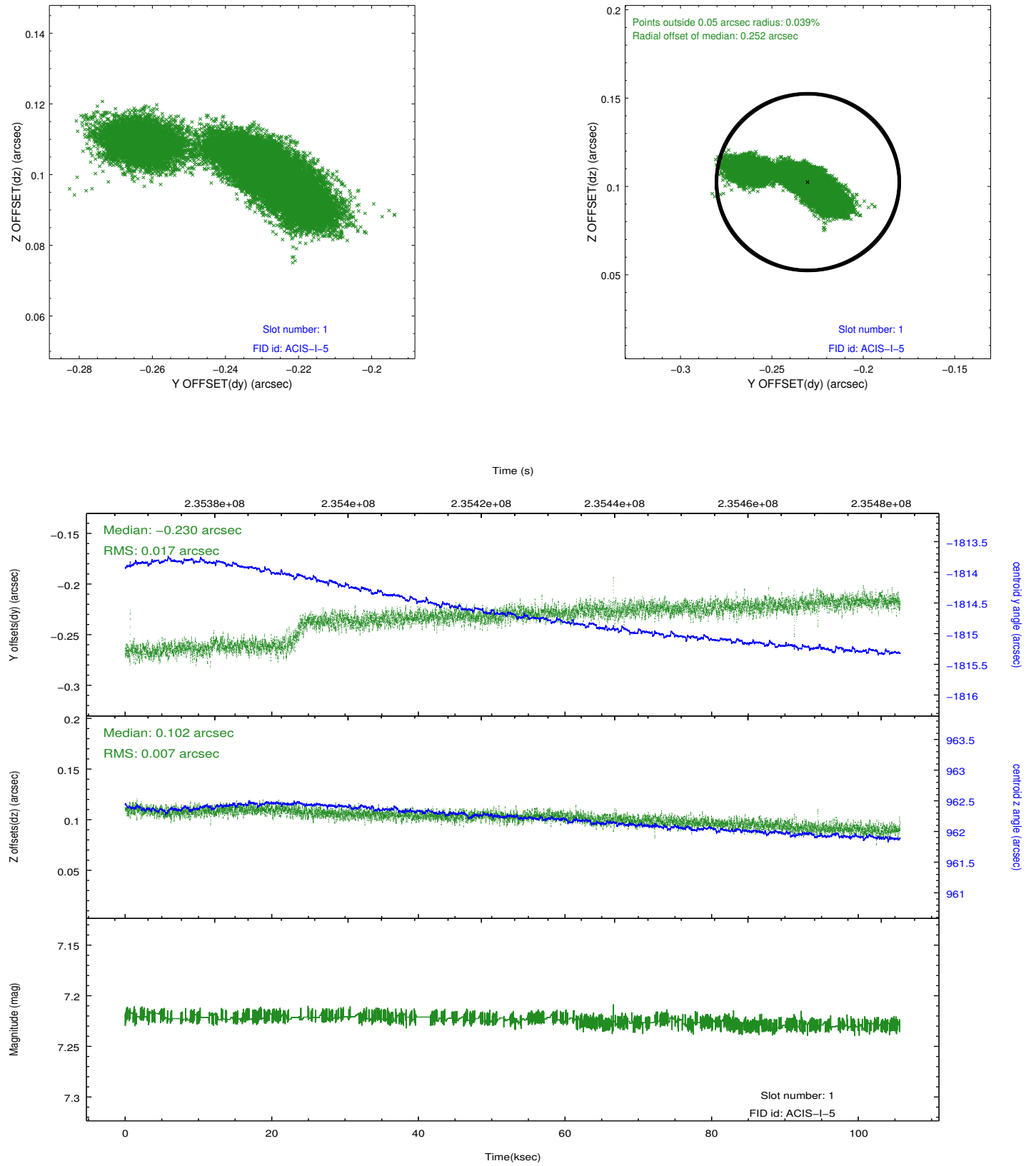


## 2.5 FID Slots

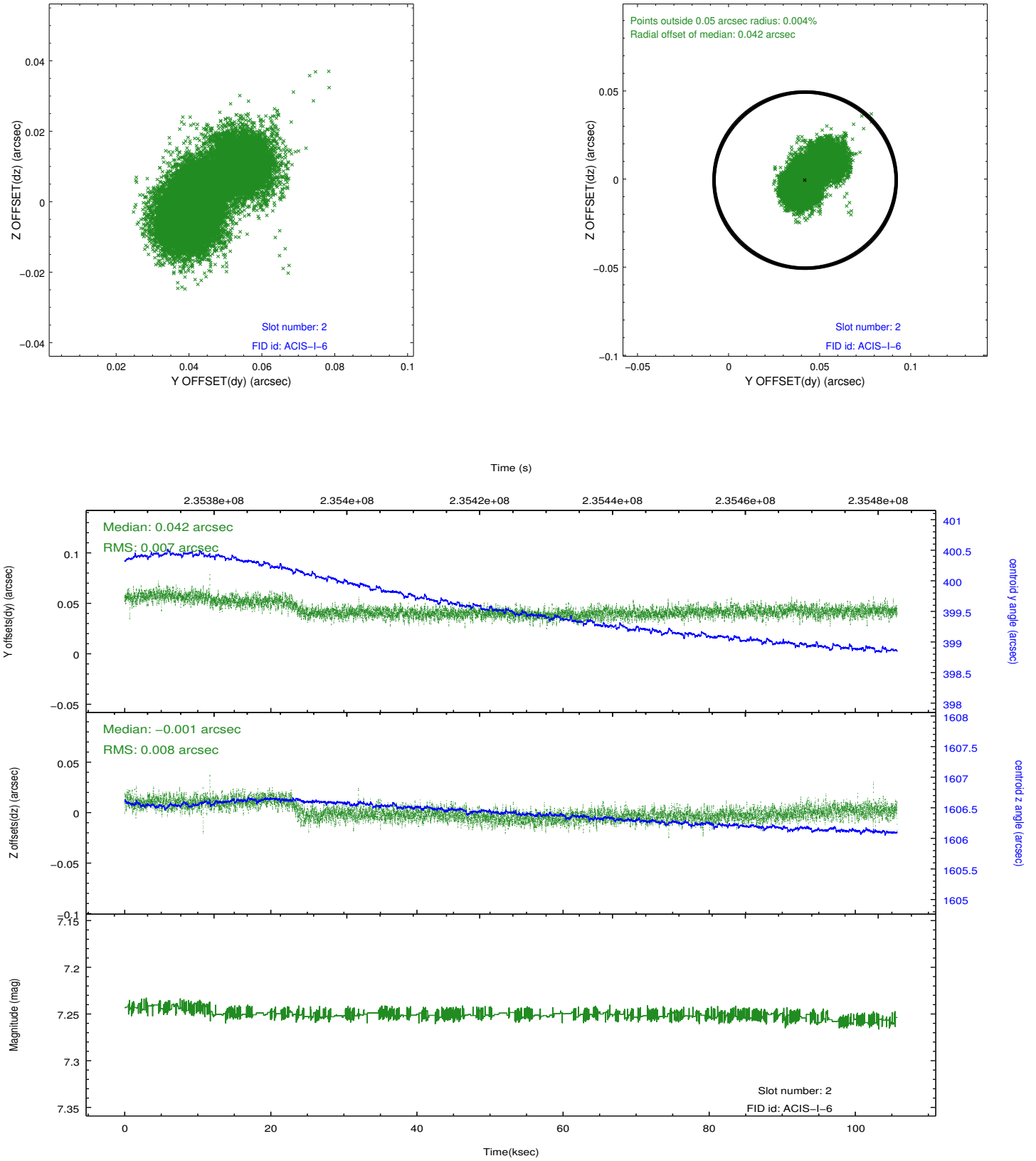
### 2.5.1 Slot 0



## 2.5.2 Slot 1



### 2.5.3 Slot 2



## A Summary

### A.1 Status

V&V Scientist	Jen Lauer
V&V Date (YYYY-MM-DD)	2013.01.17
V&V Edition	1
V&V Disposition and Status	OK
V&V Charge Time	105.006

### A.2 Comments