

V&V Reference Report

L2 ASCDS Version : 7.6.7.1

Observation 5713 - L2 Version 002
Chandra X-Ray Center

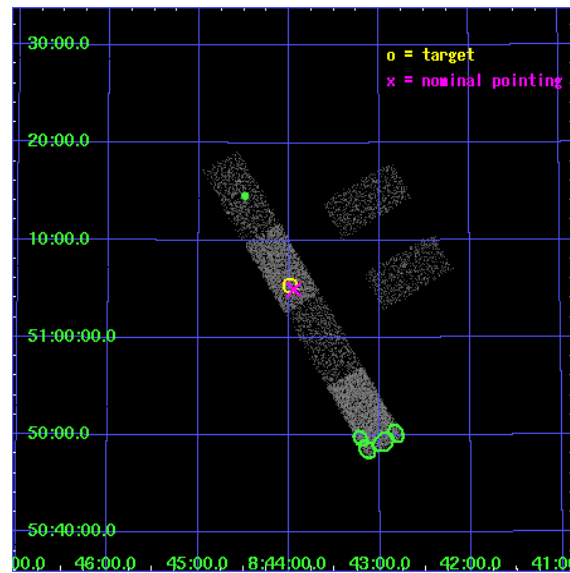
L2 Processing Date : Mar 17 2006

Contents

1	Front	2
2	OBI	3
2.1	OBI	3
2.1.1	Images	3
2.1.2	Bias	3
2.1.3	Parameters	4
2.1.4	Events	4
2.2	Compared Parameters	5
2.3	Aspect	6
2.4	Star Slots	9
2.4.1	Slot 3	9
2.4.2	Slot 4	10
2.4.3	Slot 5	11
2.4.4	Slot 6	12
2.4.5	Slot 7	13
2.5	FID Slots	14
2.5.1	Slot 0	14
2.5.2	Slot 1	15
2.5.3	Slot 2	16
3	Point Sources	17
A	Summary	18
A.1	Status	18
A.2	Comments	18

1 Front

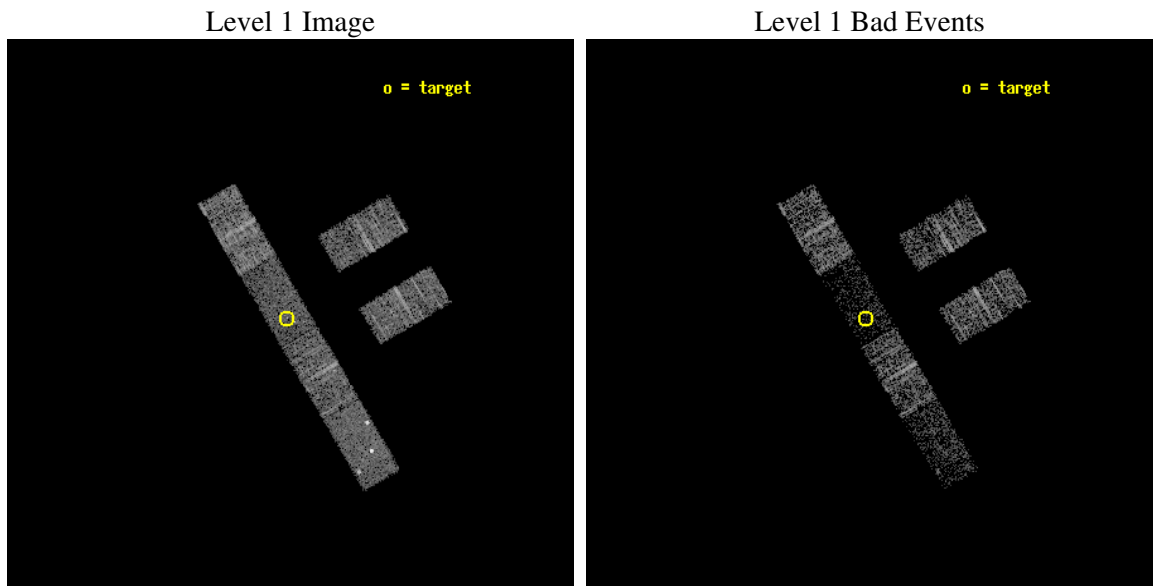
seq_num	701135
obs_id	5713
title	What kind of Jets does Nature make? X-ray characterization of the FIRST Flat Spectrum Sample
observer	Dr. Giovanni Fossati
object	87GB 0840+5116
dtcycle	0
cycle	P
ra_targ	130.996667
dec_targ	51.090444
ra_nom	130.98664972973
dec_nom	51.083009066761
roll_nom	239.63615059434
revision	2
ontime	3177.0000210404
livetime	3106.1791367232
ontime2	3177.0000210404
ontime3	3177.0000210404
ontime5	3177.0000210404
ontime6	3177.0000210404
ontime7	3177.0000210404
ontime8	3177.0000210404
l2events	11683



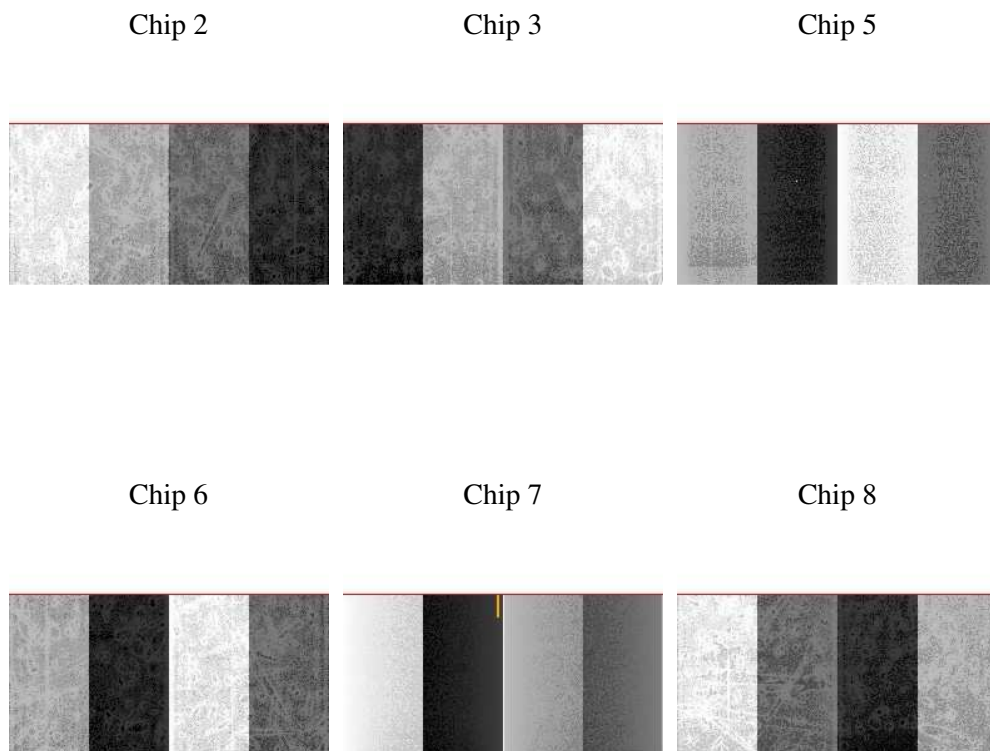
2 OBI

2.1 OBI

2.1.1 Images



2.1.2 Bias



2.1.3 Parameters

obi_num	0
ascdsver	7.6.7.1
caldsver	3.2.1
date	2006-03-17T14:51:23
revision	2

sched_exp_time	3000.000000
ontime	3380.1090334952
ontime2	3380.1090334952
ontime3	3380.1090135872
ontime5	3380.1090334952
ontime6	3380.1090334952
ontime7	3380.1090334952
ontime8	3380.1090135872
l1events	59067

2.1.4 Events

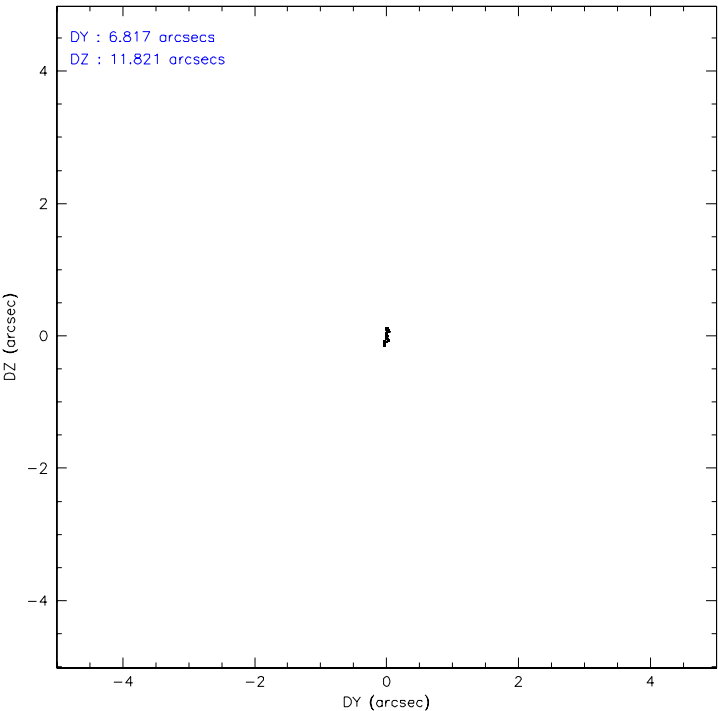
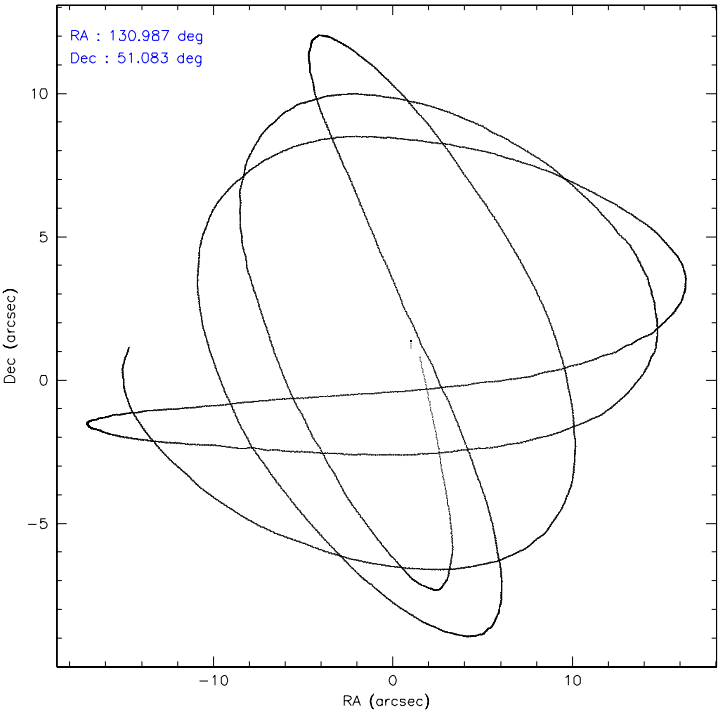
	ccd 2	ccd 3	ccd 5	ccd 6	ccd 7	ccd 8
level 1 events	10482	9306	10540	9589	6287	12863
rejected events	9463	8412	3866	8392	2558	9919
rejected %	90%	90%	36%	87%	40%	77%

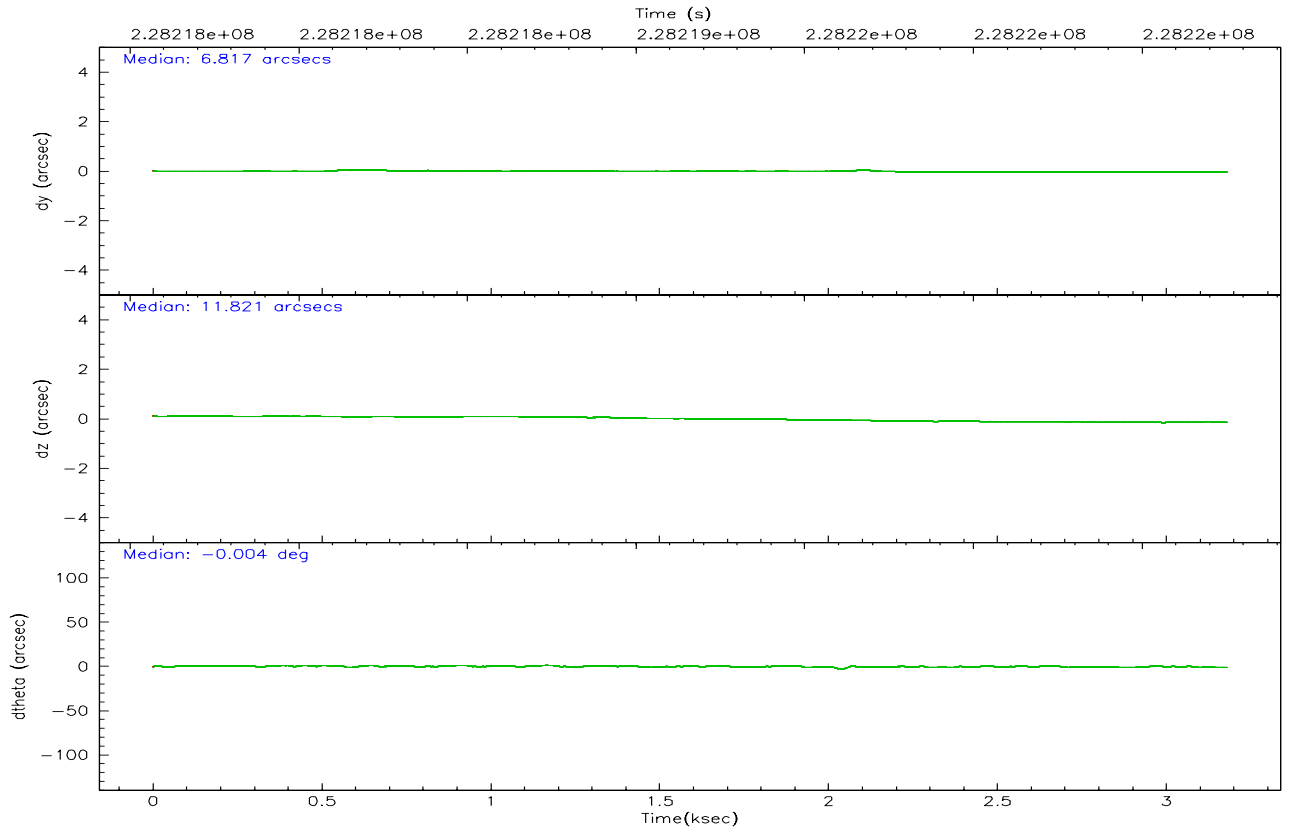
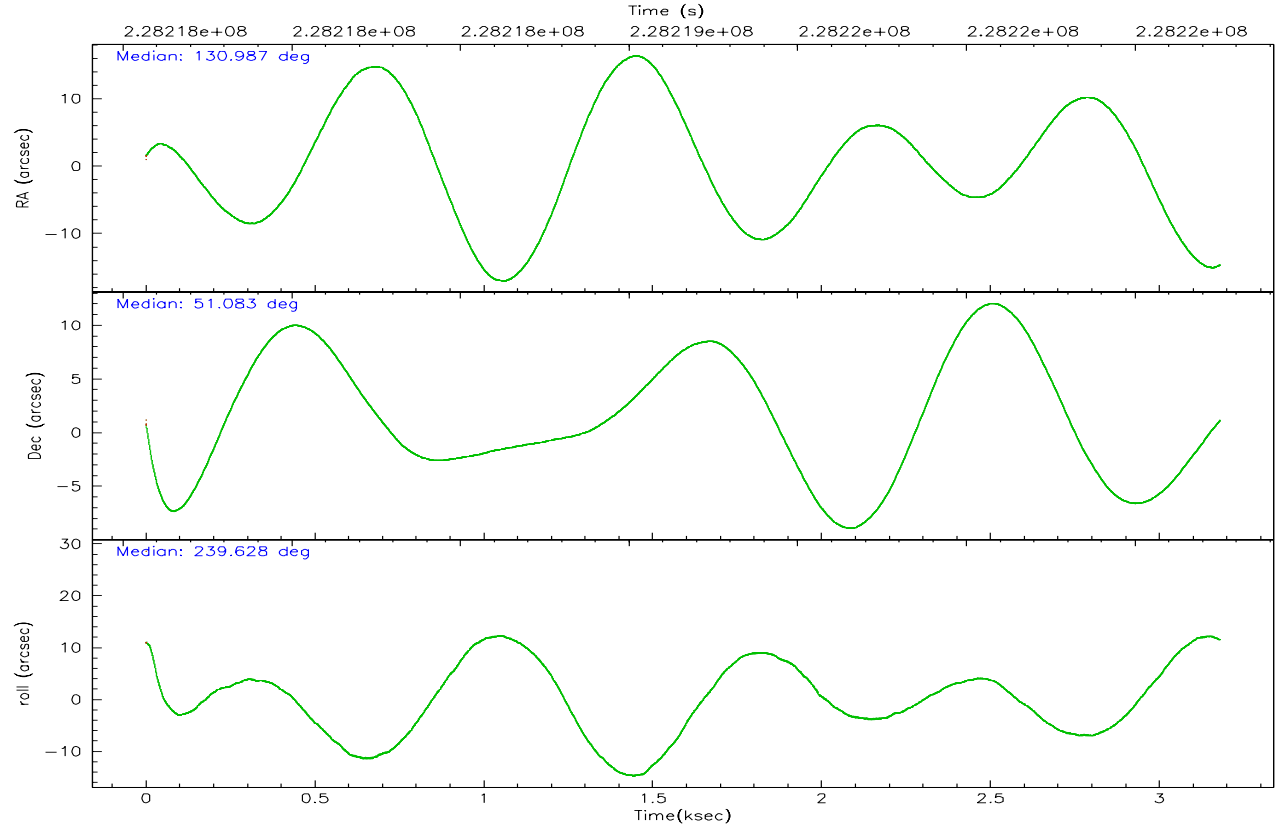
	ccd 2	ccd 3	ccd 5	ccd 6	ccd 7	ccd 8
grade 0 events	427	385	2286	566	436	997
	4%	4%	21%	5%	6%	7%
grade 1 events	1	4	2	3	9	9
	0%	0%	0%	0%	0%	0%
grade 2 events	224	177	2025	247	1114	664
	2%	1%	19%	2%	17%	5%
grade 3 events	123	126	225	133	296	392
	1%	1%	2%	1%	4%	3%
grade 4 events	154	117	202	131	369	341
	1%	1%	1%	1%	5%	2%
grade 5 events	153	155	543	189	460	304
	1%	1%	5%	1%	7%	2%
grade 6 events	149	133	2370	177	1721	780
	1%	1%	22%	1%	27%	6%
grade 7 events	9251	8209	2887	8143	1882	9376
	88%	88%	27%	84%	29%	72%

2.2 Compared Parameters

Parameter	Planned	Actual	Parameter	Planned	Actual
Instrument	ACIS	ACIS	Obspar format version number	6	6
Detector	ACIS-235678	ACIS-235678	Obspar file type	PREDICTED	ACTUAL
Grating	NONE	NONE	Obspar update status	NONE	UPDATED
Data mode	FAINT	FAINT	On-chip summing requested	N	N
Observation mode	POINTING	POINTING	Subarray requested	1/2	1/2
Pointing RA	130.986374	130.9866497297342	Subarray start row	0	257
Pointing Dec	51.110319	51.08300906676101	Subarray row count	1024	512
Pointing Roll	239.479670	239.6361505943449	Alternating exposures requested	N	N
SIM focus pos (mm)	-0.684267	-0.6828225247311905	Primary exposure time	0.000000	1.8
SIM defocus (mm)	0	0.001444936568705701			
SIM translation stage pos (mm)	-190.132523	-190.1425803651734			
SIM translation stage offset (mm)	0	0.01005778216563158			
Observation start time	228217748.184000	228216799.56681			
Observation start date	2005-03-26T09:48:04	2005-03-26T09:33:19			
Observation end time	228220748.184000	228220950.817			
Observation end date	2005-03-26T10:38:04	2005-03-26T10:42:30			
Read mode	TIMED	TIMED			

2.3 Aspect



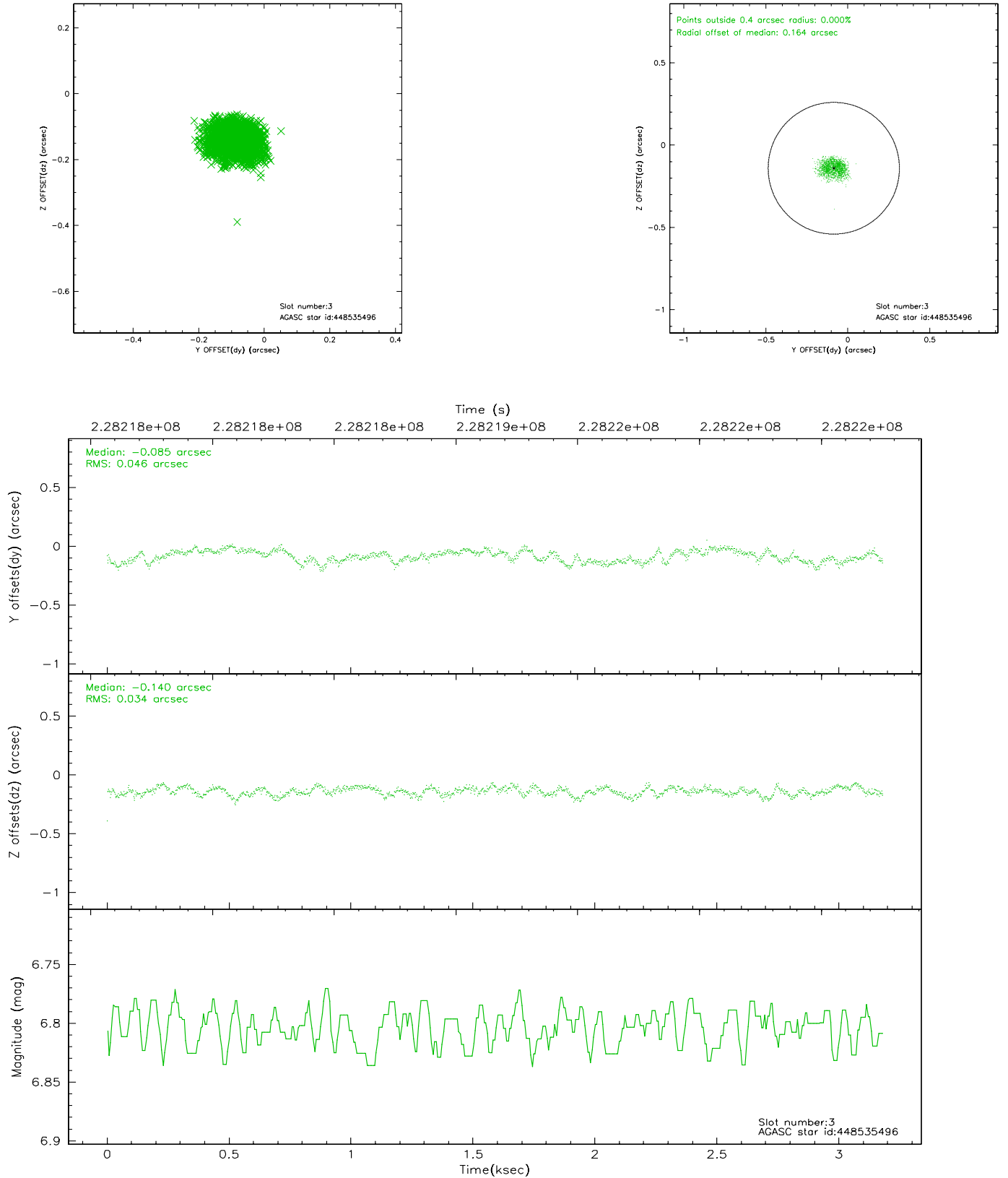


Slot Statistics

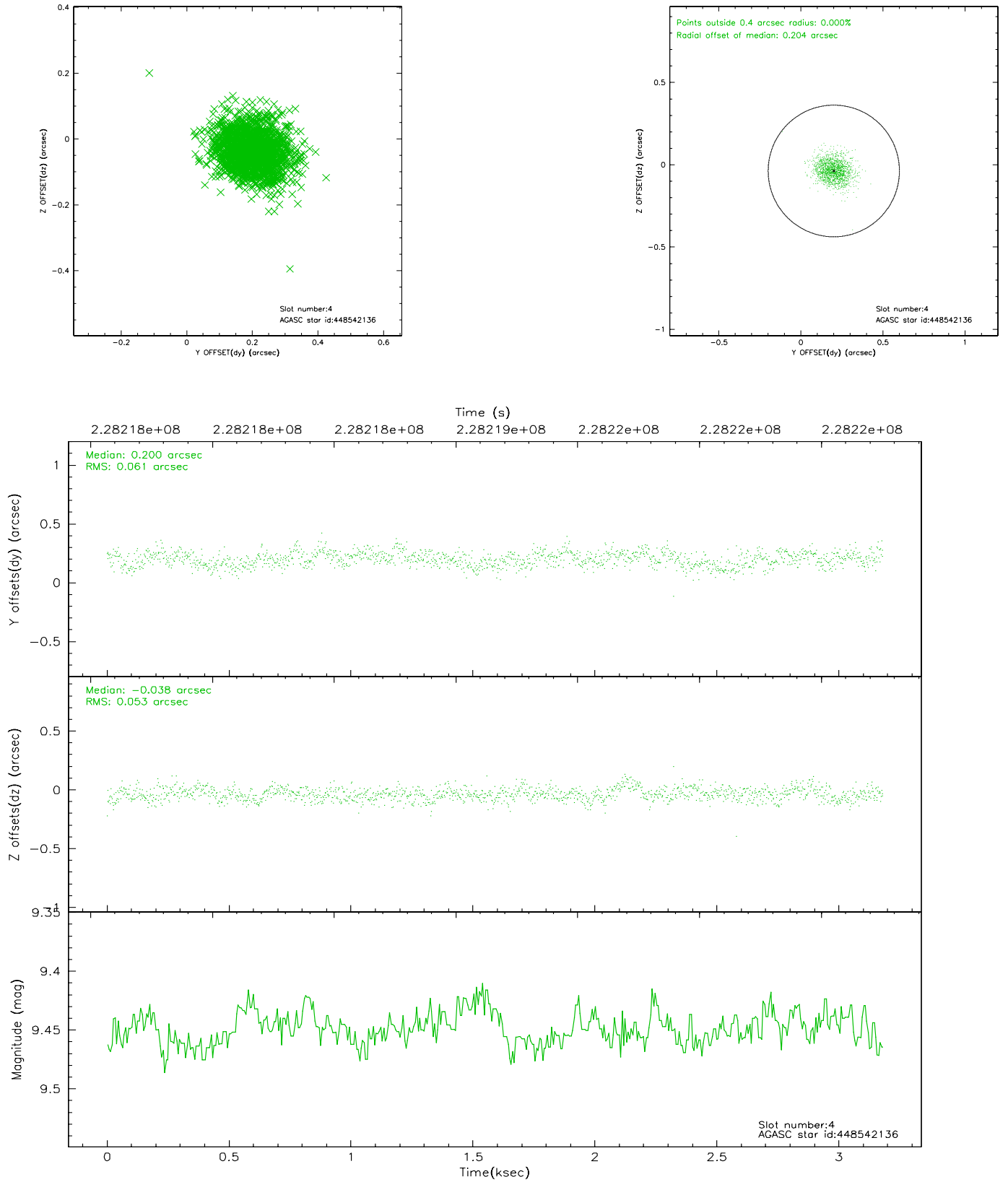
slot	status	id	mag	n_pts	med_dy	med_dz	dr1	dr2	ra	dec	mean_y	mean_z
0	FID	ACIS-S-1	7.18	776	0.034	-0.058	0.007	0.012	0.000000	0.000000	936.47	-1728.76
1	FID	ACIS-S-5	7.24	776	-0.023	0.031	0.007	0.011	0.000000	0.000000	-1811.42	166.87
2	FID	ACIS-S-6	7.34	775	-0.032	0.039	0.009	0.015	0.000000	0.000000	399.85	813.06
3	GUIDE	448535496	6.80	1552	-0.085	-0.140	0.061	0.093	130.179057	51.430747	-82.12	-2151.88
4	GUIDE	448542136	9.45	1552	0.200	-0.038	0.085	0.142	130.394428	50.774076	1722.61	-549.83
5	GUIDE	448666008	8.79	1551	-0.035	0.023	0.071	0.116	131.611099	51.308628	-1333.08	845.28
6	GUIDE	448672088	8.98	1550	-0.011	0.120	0.081	0.127	131.437545	50.827892	351.05	1399.48
7	GUIDE	448672416	9.34	1551	-0.066	0.037	0.094	0.150	132.075197	51.196468	-1530.20	1950.07

2.4 Star Slots

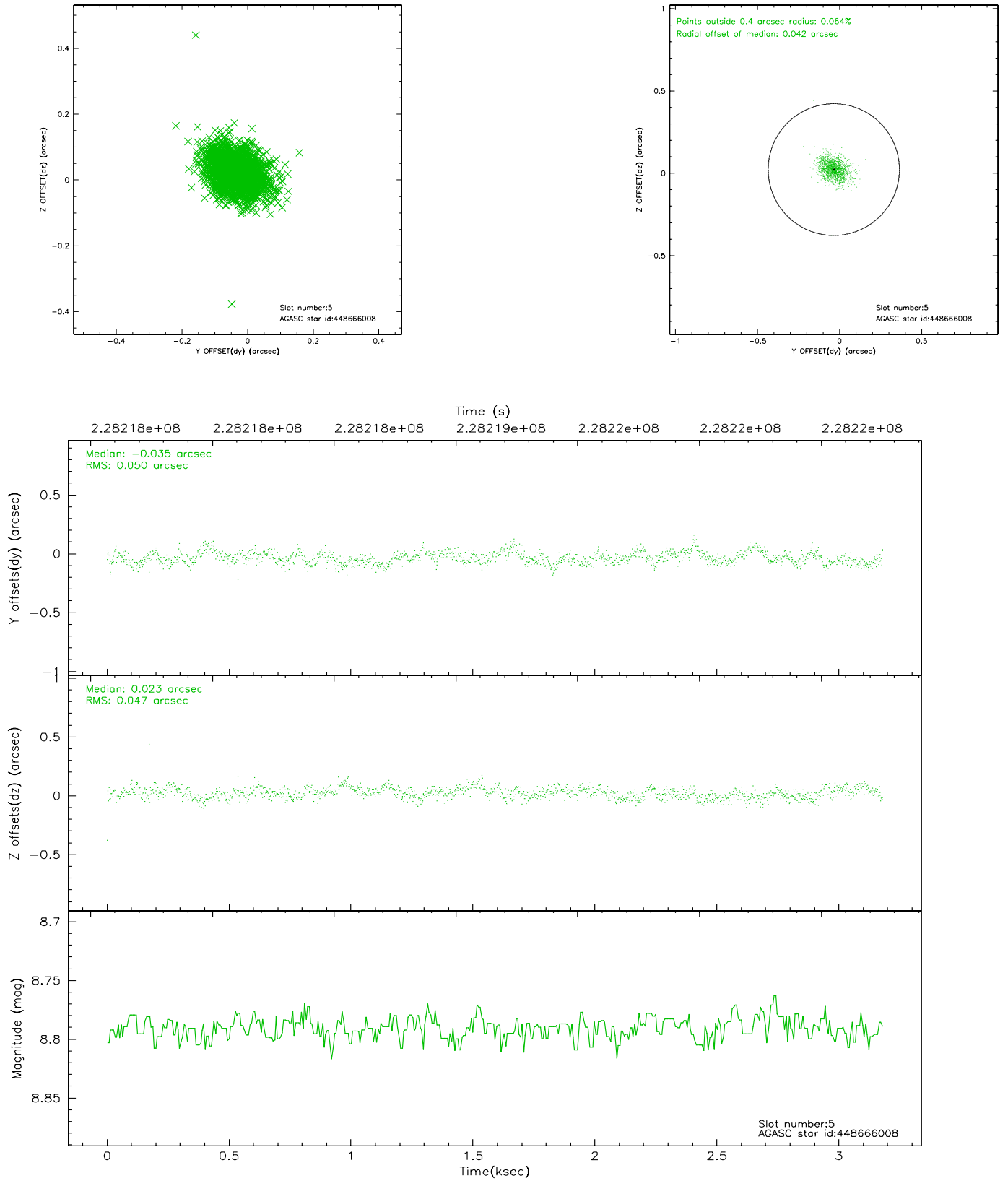
2.4.1 Slot 3



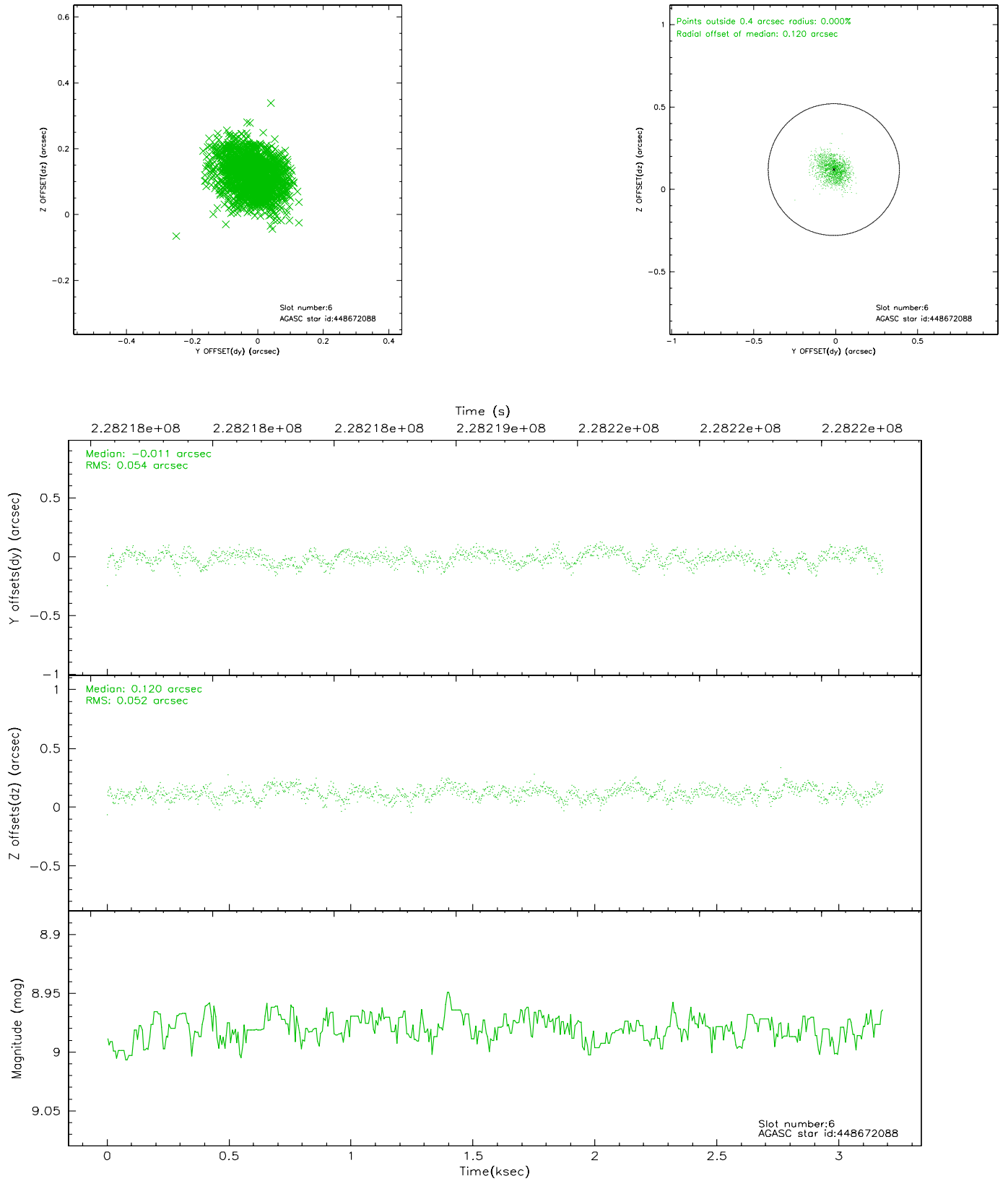
2.4.2 Slot 4



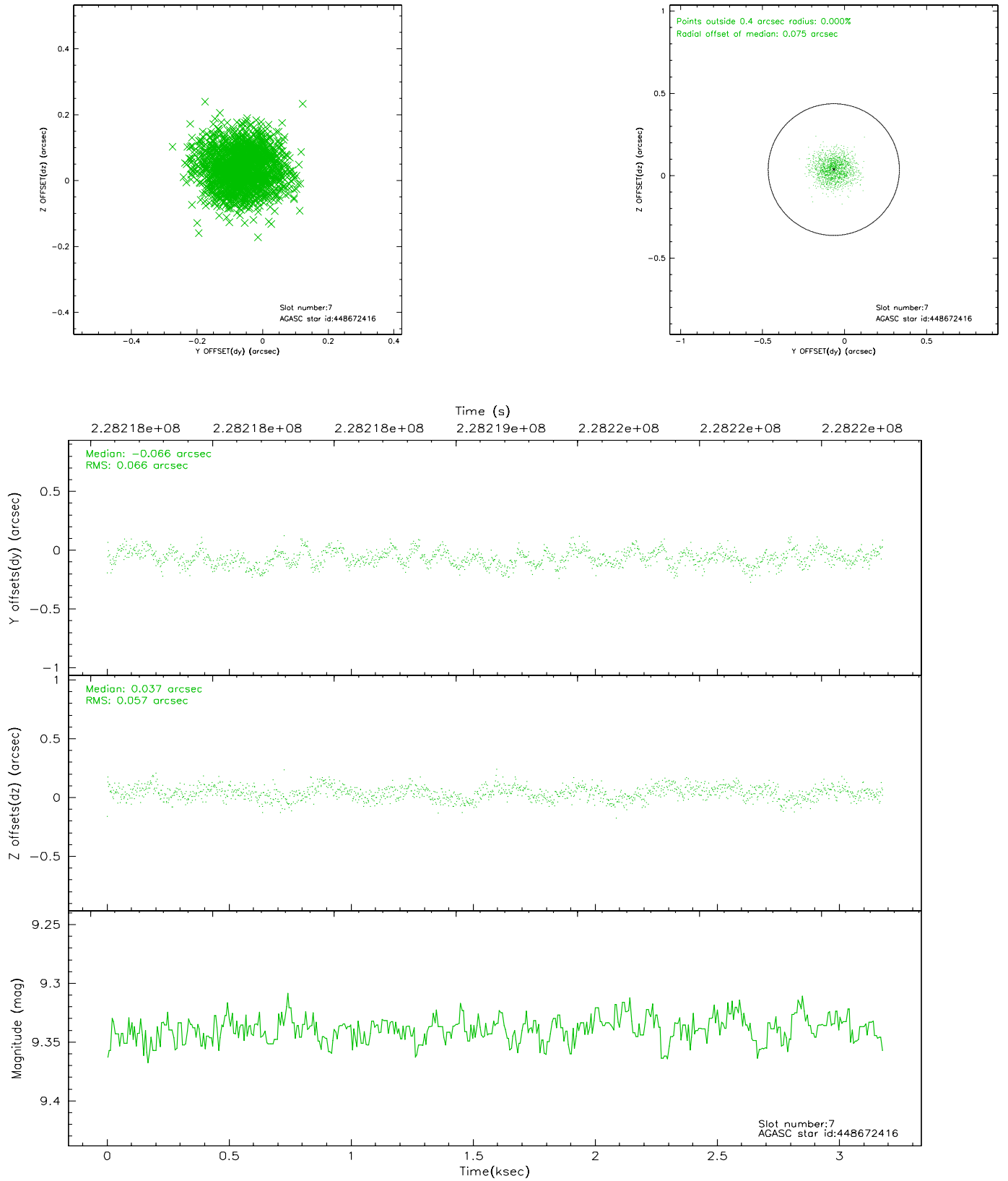
2.4.3 Slot 5



2.4.4 Slot 6

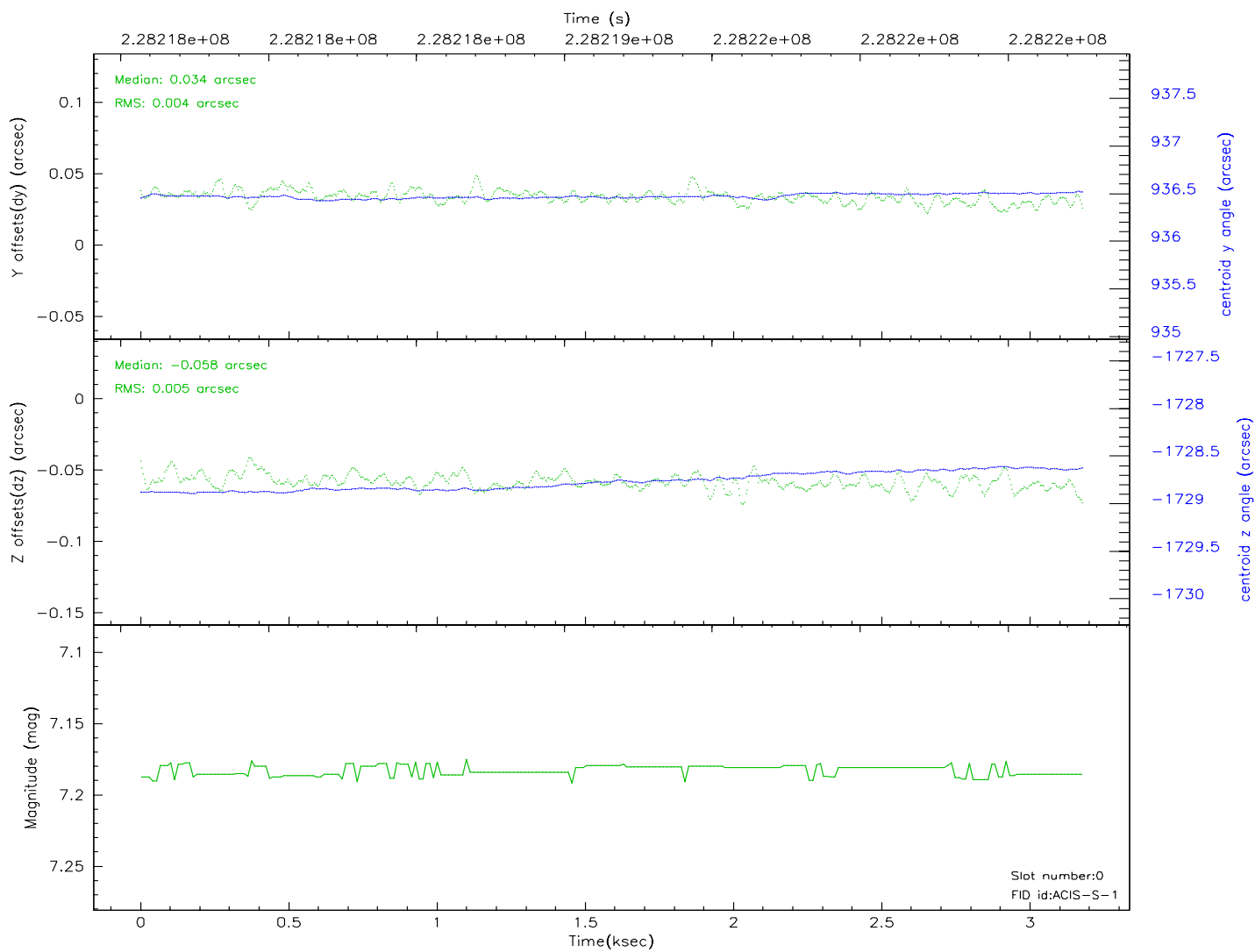
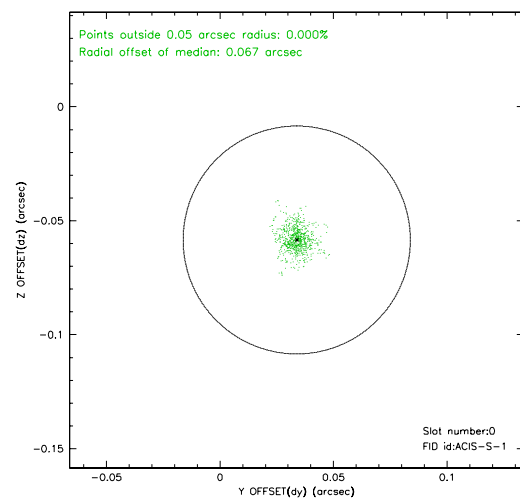
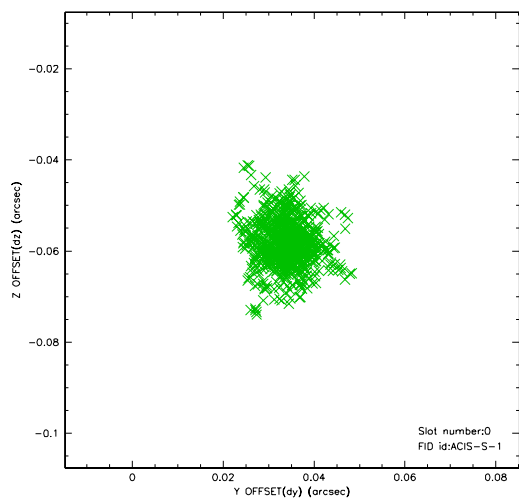


2.4.5 Slot 7

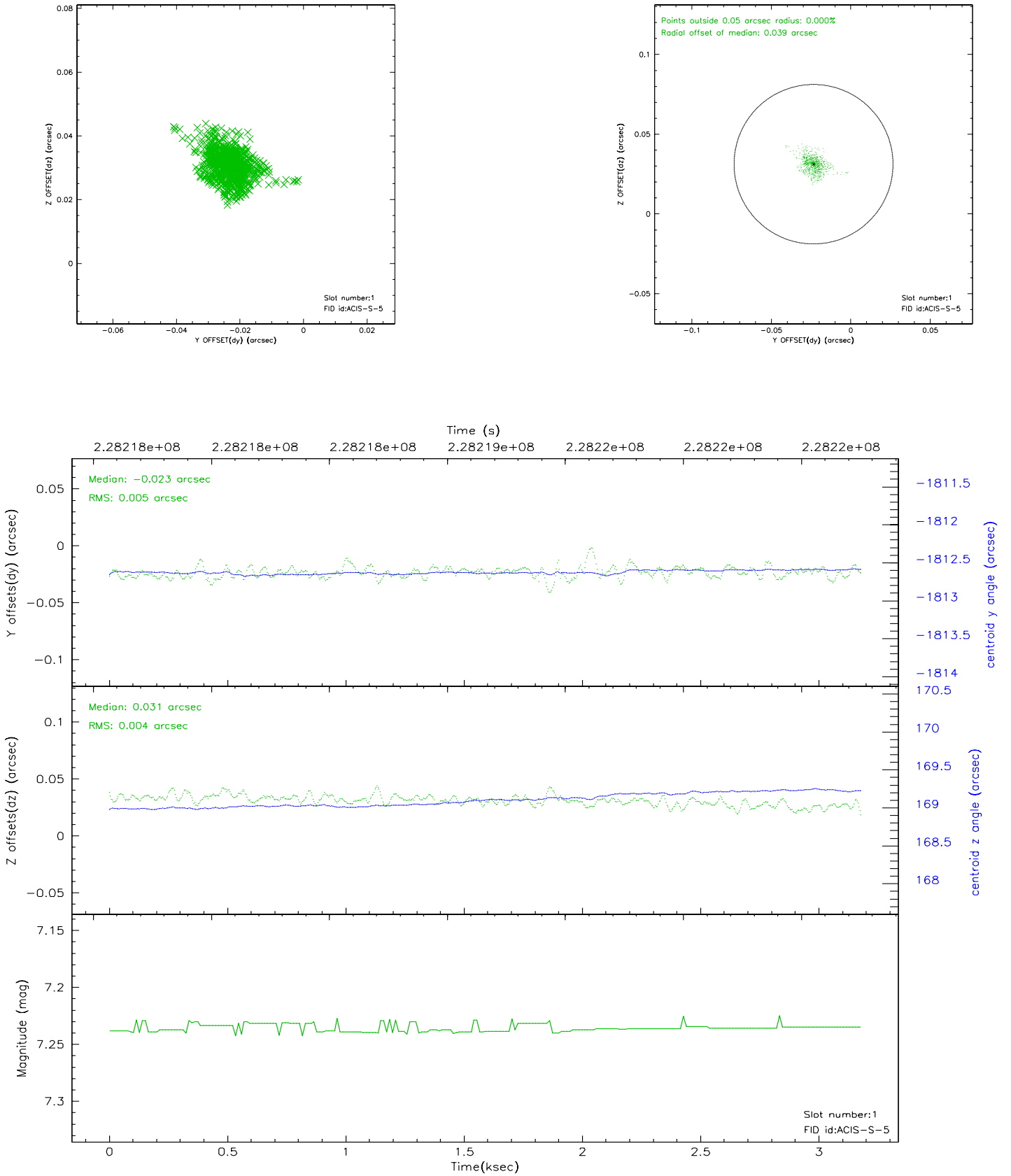


2.5 FID Slots

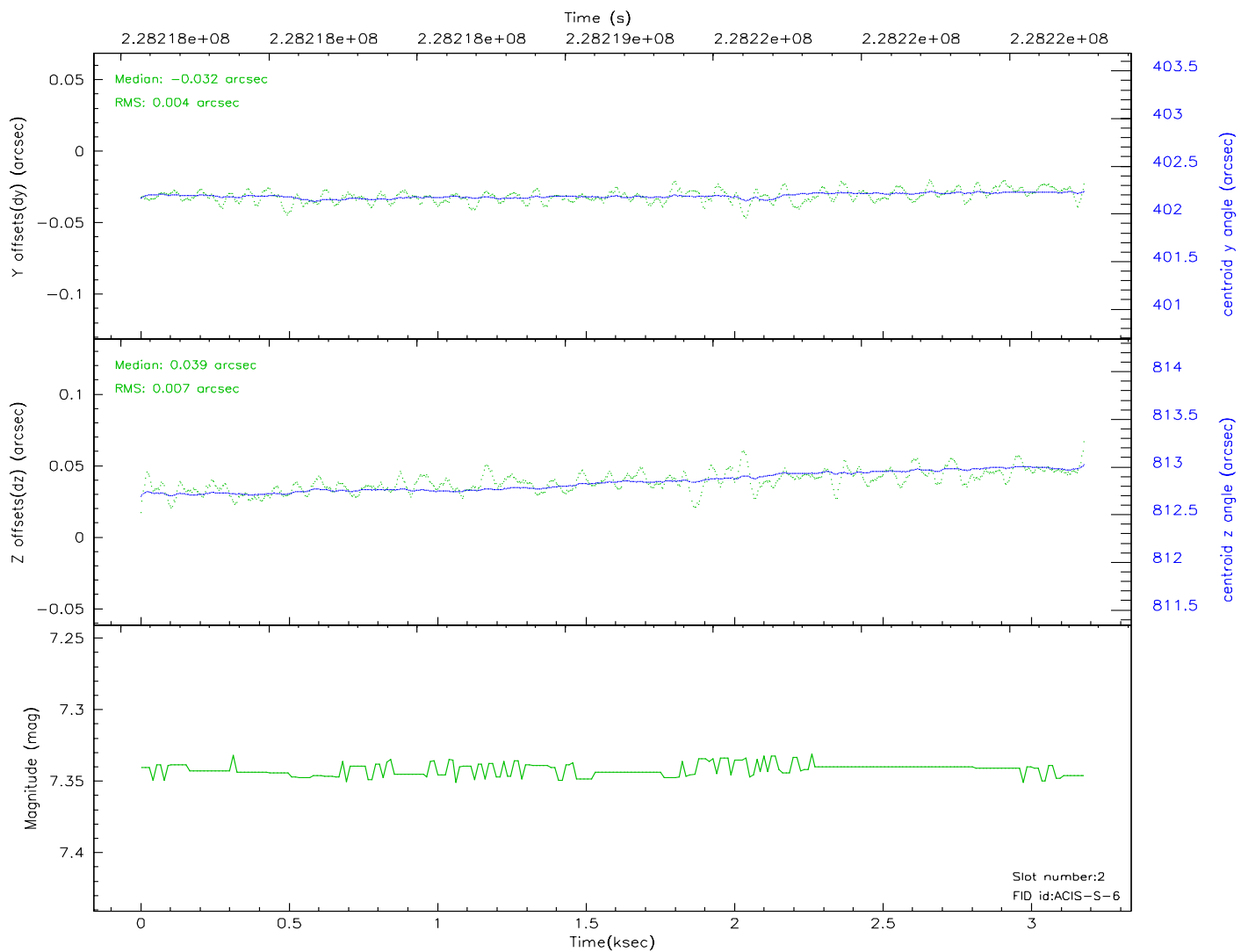
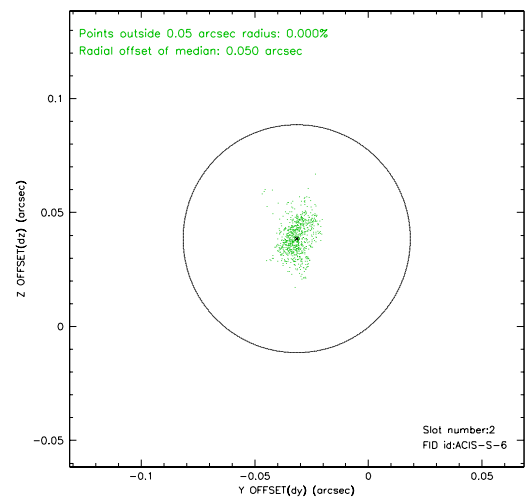
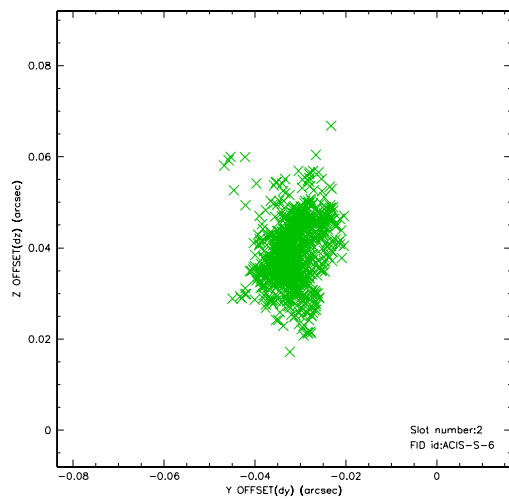
2.5.1 Slot 0



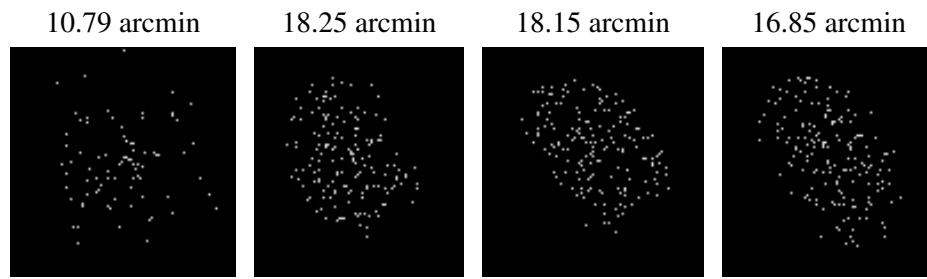
2.5.2 Slot 1



2.5.3 Slot 2



3 Point Sources



A Summary

A.1 Status

V&V Scientist	Jen Lauer
V&V Date (YYYY-MM-DD)	2006.03.17
V&V Edition	1
V&V Disposition and Status	OK
V&V Charge Time	3.177

A.2 Comments