

# V&V Reference Report

## L2 ASCDS Version : 8.4.5

Observation 57123 - L2 Version 2  
Chandra X-Ray Center

L2 Processing Date : Jun 6 2012

## Contents

<b>1</b>	<b>Front</b>	<b>2</b>
<b>2</b>	<b>OBI</b>	<b>3</b>
2.1	OBI . . . . .	3
2.1.1	Images . . . . .	3
2.1.2	Bias . . . . .	3
2.1.3	Parameters . . . . .	4
2.1.4	Events . . . . .	4
2.2	Compared Parameters . . . . .	5
2.3	Star Slots . . . . .	6
2.4	FID Slots . . . . .	6
<b>A</b>	<b>Summary</b>	<b>7</b>
A.1	Status . . . . .	7
A.2	Comments . . . . .	7

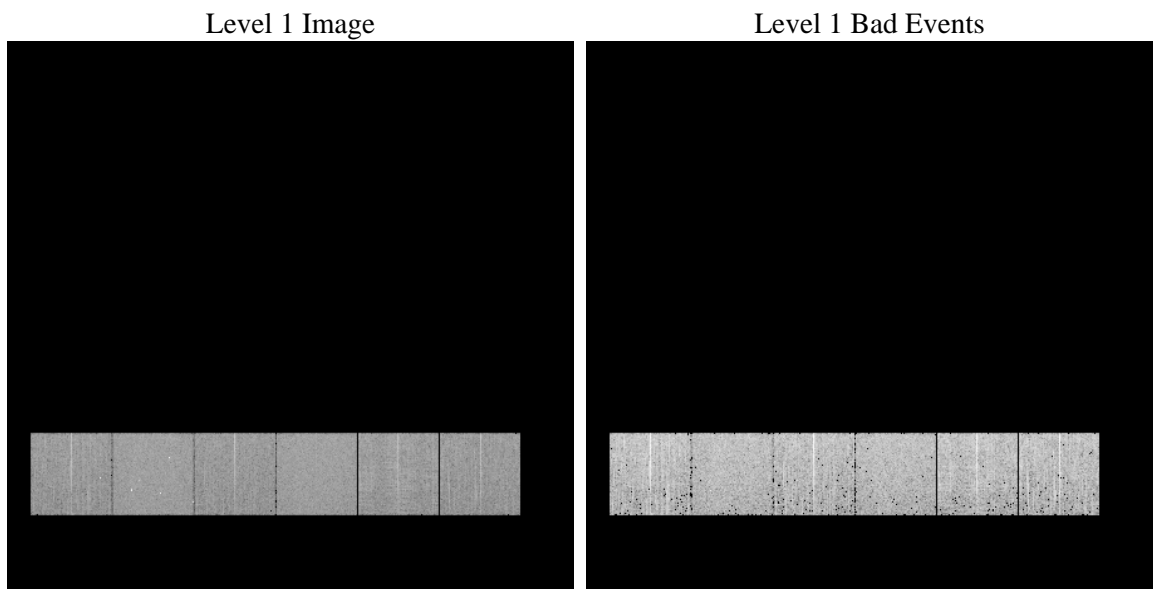
# 1 Front

seq_num	&#160	Sequence number
obs_id	57123	Observation id
title	ACIS-456789 diagnostics	Proposal title
observer	CHANDRA engineering request/realtime commanding	Principal investig
object	&#160	Source name
dtcycle	0	&#160
cycle	P	events from which exps? Prim/Second/Both
ra_targ	0.0	Observer's specified target RA [deg]
dec_targ	0.0	Observer's specified target Dec [deg]
ra_nom	234.97137072761	Nominal RA [deg]
dec_nom	6.9961839551803	Nominal Dec [deg]
roll_nom	154.55774598515	Nominal Roll [deg]
revision	2	Processing version of data
ontime	3267.1999878883	Sum of GTIs [s]
livetime	3225.82873437	Livetime [s]
ontime4	3267.1999878883	Sum of GTIs [s]
ontime5	3267.1999878883	Sum of GTIs [s]
ontime6	3267.1999878883	Sum of GTIs [s]
ontime7	3267.1999878883	Sum of GTIs [s]
ontime8	3267.1999878883	Sum of GTIs [s]
ontime9	3267.1999878883	Sum of GTIs [s]
l2events	207987	Number of level 2 events

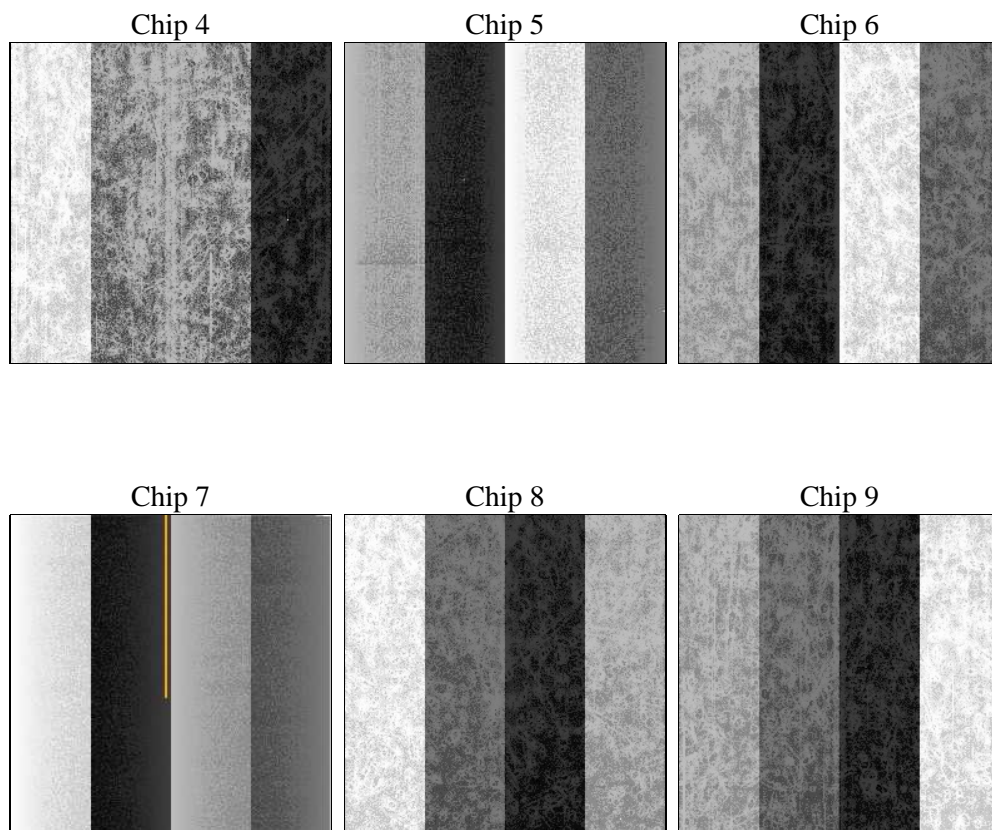
## 2 OBI

### 2.1 OBI

#### 2.1.1 Images



#### 2.1.2 Bias



### 2.1.3 Parameters

obi_num	0	Obi number	sched_exp_time	0.0	[s] Scheduled observation exposure time
ascdsver	8.4.5	Processing system revision	ontime	3267.1999878883	Sum of GTIs [s]
caldsver	4.4.10	&#160	ontime4	3267.1999878883	Sum of GTIs [s]
date	2012-06-07T00:24:45	Date and time of file creation	ontime5	3267.1999878883	Sum of GTIs [s]
revision	2	Processing version of data	ontime6	3267.1999878883	Sum of GTIs [s]
			ontime7	3267.1999878883	Sum of GTIs [s]
			ontime8	3267.1999878883	Sum of GTIs [s]
			ontime9	3267.1999878883	Sum of GTIs [s]
			l1events	419108	Number of level 1 events

### 2.1.4 Events

	ccd 4	ccd 5	ccd 6	ccd 7	ccd 8	ccd 9		ccd 4	ccd 5	ccd 6	ccd 7	ccd 8	ccd 9
level 1 events	66123	77505	63871	75694	71355	64560	grade 0 events	17774	7824	17151	8562	18693	16636
rejected events	35092	29747	31173	29044	33135	33109		26%	10%	26%	11%	26%	25%
rejected %	53%	38%	48%	38%	46%	51%	grade 1 events	168	113	111	64	140	139
								0%	0%	0%	0%	0%	0%
							grade 2 events	4965	16920	5795	10221	7200	5537
								7%	21%	9%	13%	10%	8%
							grade 3 events	2248	2204	2132	4378	2846	2120
								3%	2%	3%	5%	3%	3%
							grade 4 events	2118	2040	2160	4230	2639	2171
								3%	2%	3%	5%	3%	3%
							grade 5 events	1786	3940	1830	4691	2327	2027
								2%	5%	2%	6%	3%	3%
							grade 6 events	3957	18810	5499	19300	6871	5017
								5%	24%	8%	25%	9%	7%
							grade 7 events	33107	25654	29193	24248	30639	30913
								50%	33%	45%	32%	42%	47%

## 2.2 Compared Parameters

Parameter	Planned	Actual	Parameter	Planned	Actual
Instrument	ACIS	ACIS	Obspar format version number	7	7
Detector	ACIS-456789	ACIS-456789	Obspar file type	PREDICTED	ACTUAL
Grating	NONE	NONE	Obspar update status	NONE	UPDATED
Data mode	FAINT	FAINT	Number of optional ACIS chips dropped	0	0
Observation mode	SECONDARY	SECONDARY	On-chip summing requested	N	N
[deg] Pointing RA	0	234.9713707276082	Subarray requested	NONE	NONE
[deg] Pointing Dec	0	6.996183955180268	Alternating exposures requested	N	N
[deg] Pointing Roll	0.0	154.5577459851461	[s] Primary exposure time	3.2	3.2
[mm] SIM focus pos	-1.429586	-0.6828225247311905			
[mm] SIM defocus	0.1037507710433287	0.8505141146731063			
[mm] SIM translation stage pos	250.455976	250.4635187648994			
[mm] SIM translation stage offset	0	-0.007540371344731511			
[s] Observation start time (MET)	358003399.711254	358003398.68626			
Observation start date	2009-05-06T13:23:20	2009-05-06T13:23:18			
[s] Observation end time (MET)	358012432.011704	358012430.98671			
Observation end date	2009-05-06T15:53:52	2009-05-06T15:53:50			
Read mode	TIMED	TIMED			

## 2.3 Star Slots

## 2.4 FID Slots

## **A Summary**

### **A.1 Status**

V&V Scientist	Jen Lauer
V&V Date (YYYY-MM-DD)	2012.06.11
V&V Edition	1
V&V Disposition and Status	OK
V&V Charge Time	3.2671999878883

### **A.2 Comments**