

V&V Reference Report

L2 ASCDS Version : 7.6.7.1

Observation 5683 - L2 Version 002
Chandra X-Ray Center

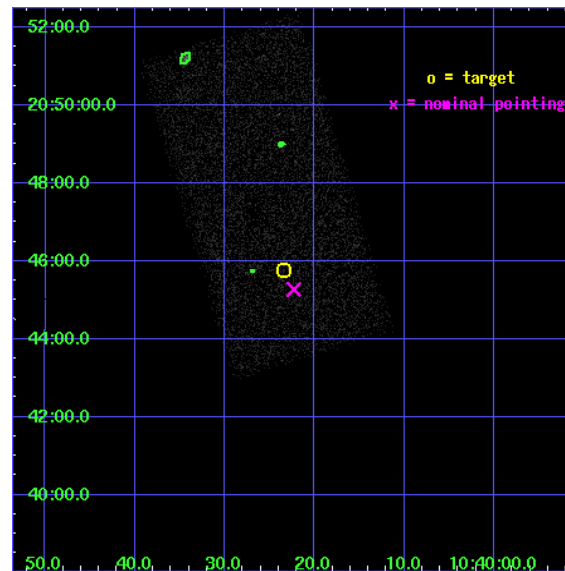
L2 Processing Date : Mar 10 2006

Contents

1	Front	2
2	OBI	3
2.1	OBI	3
2.1.1	Images	3
2.1.2	Bias	3
2.1.3	Parameters	4
2.1.4	Events	4
2.2	Compared Parameters	5
2.3	Aspect	6
2.4	Star Slots	9
2.4.1	Slot 3	9
2.4.2	Slot 4	10
2.4.3	Slot 5	11
2.4.4	Slot 6	12
2.4.5	Slot 7	13
2.5	FID Slots	14
2.5.1	Slot 0	14
2.5.2	Slot 1	15
2.5.3	Slot 2	16
3	Point Sources	17
A	Summary	18
A.1	Status	18
A.2	Comments	18

1 Front

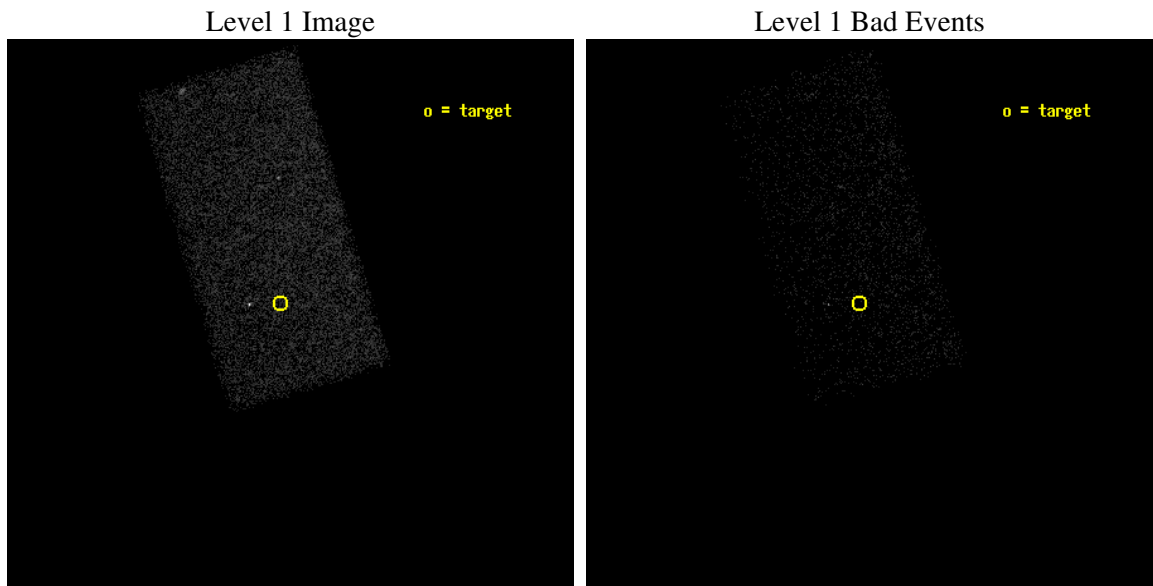
seq_num	701106
obs_id	5683
title	Bringing in the Last SHEEP
observer	Dr Kirpal Nandra
object	AX J1040.3+2045
dtcycle	0
cycle	P
ra_targ	160.0975
dec_targ	20.763056
ra_nom	160.09295970226
dec_nom	20.754497756582
roll_nom	253.30956401497
revision	2
ontime	5185.5
livetime	5047.403052484
ontime7	5185.5
l2events	11772



2 OBI

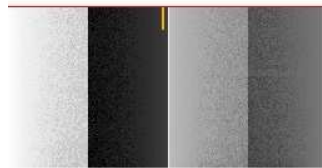
2.1 OBI

2.1.1 Images



2.1.2 Bias

Chip 7



2.1.3 Parameters

obi_num	1
ascdsver	7.6.7.1
caldbver	3.2.1
date	2006-03-10T16:59:33
revision	2

sched_exp_time	5000.000000
ontime	5384.3300459385
ontime7	5384.3300459385
l1events	29637

2.1.4 Events

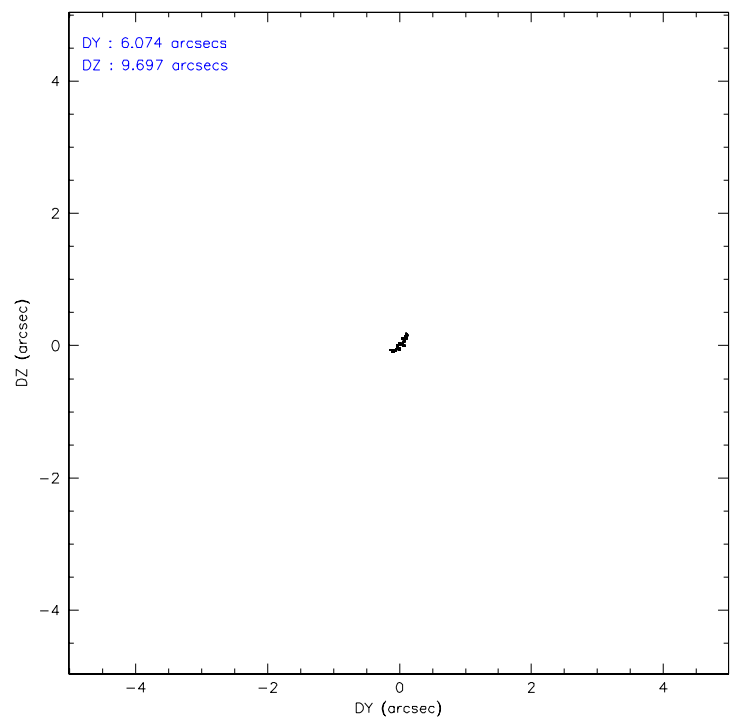
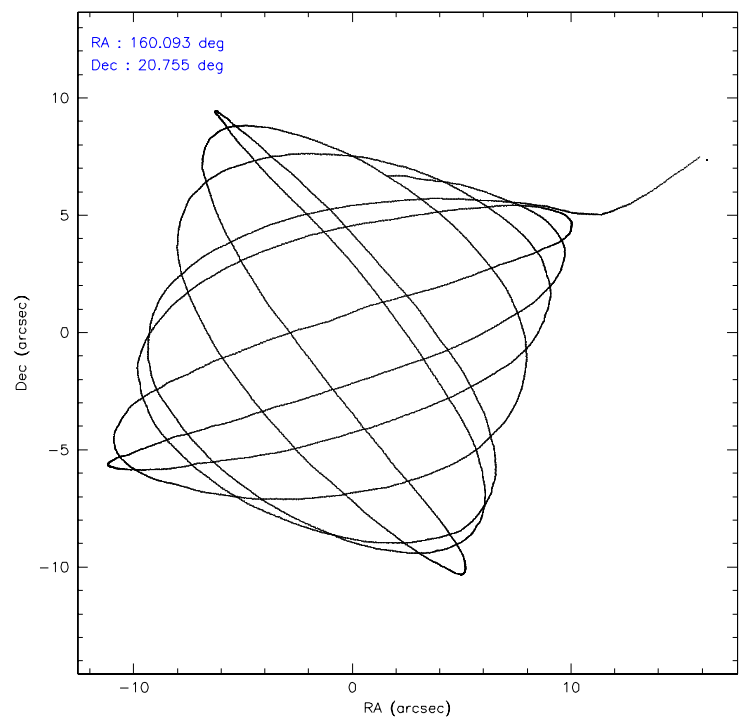
	ccd 7
level 1 events	29637
rejected events	17552
rejected %	59%

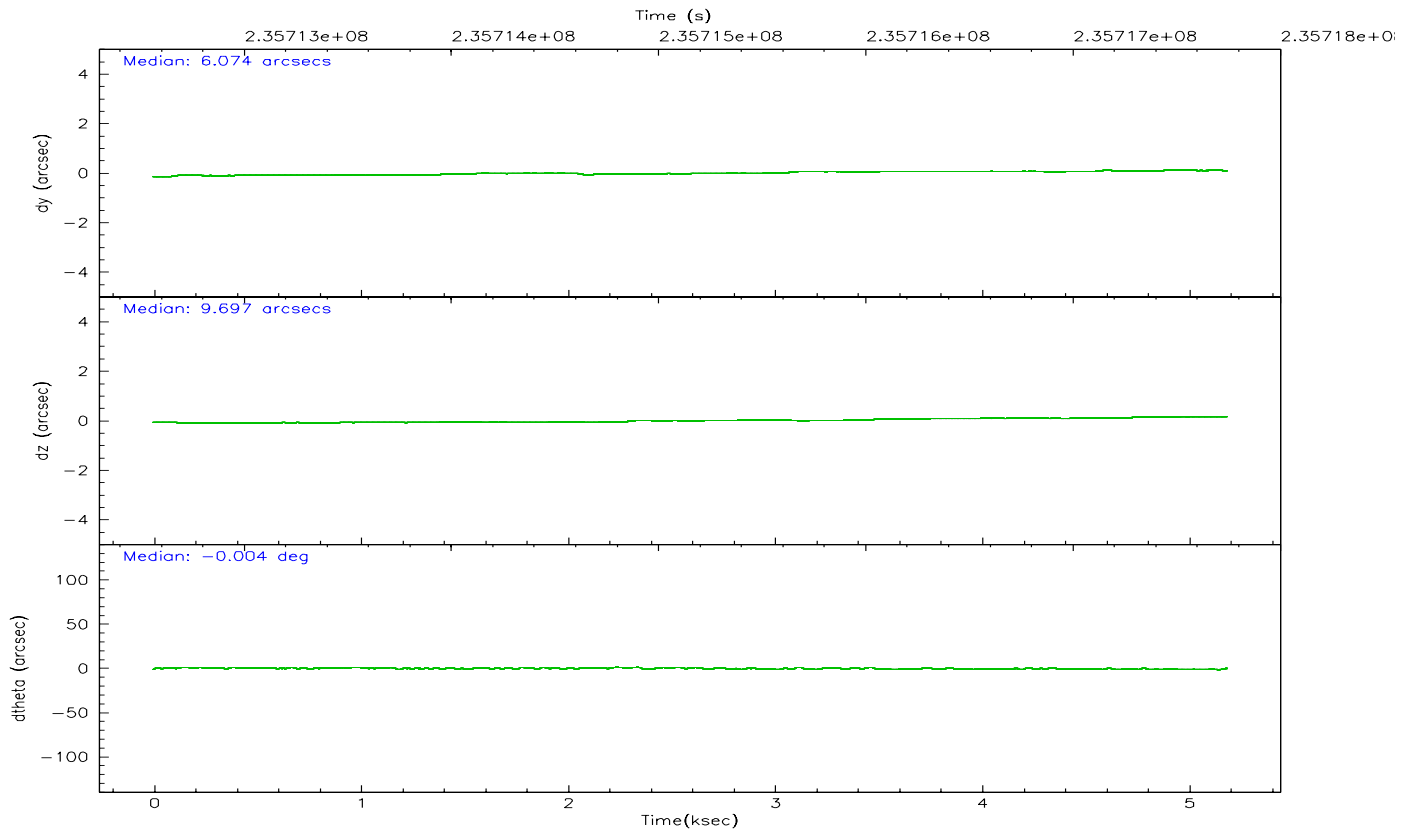
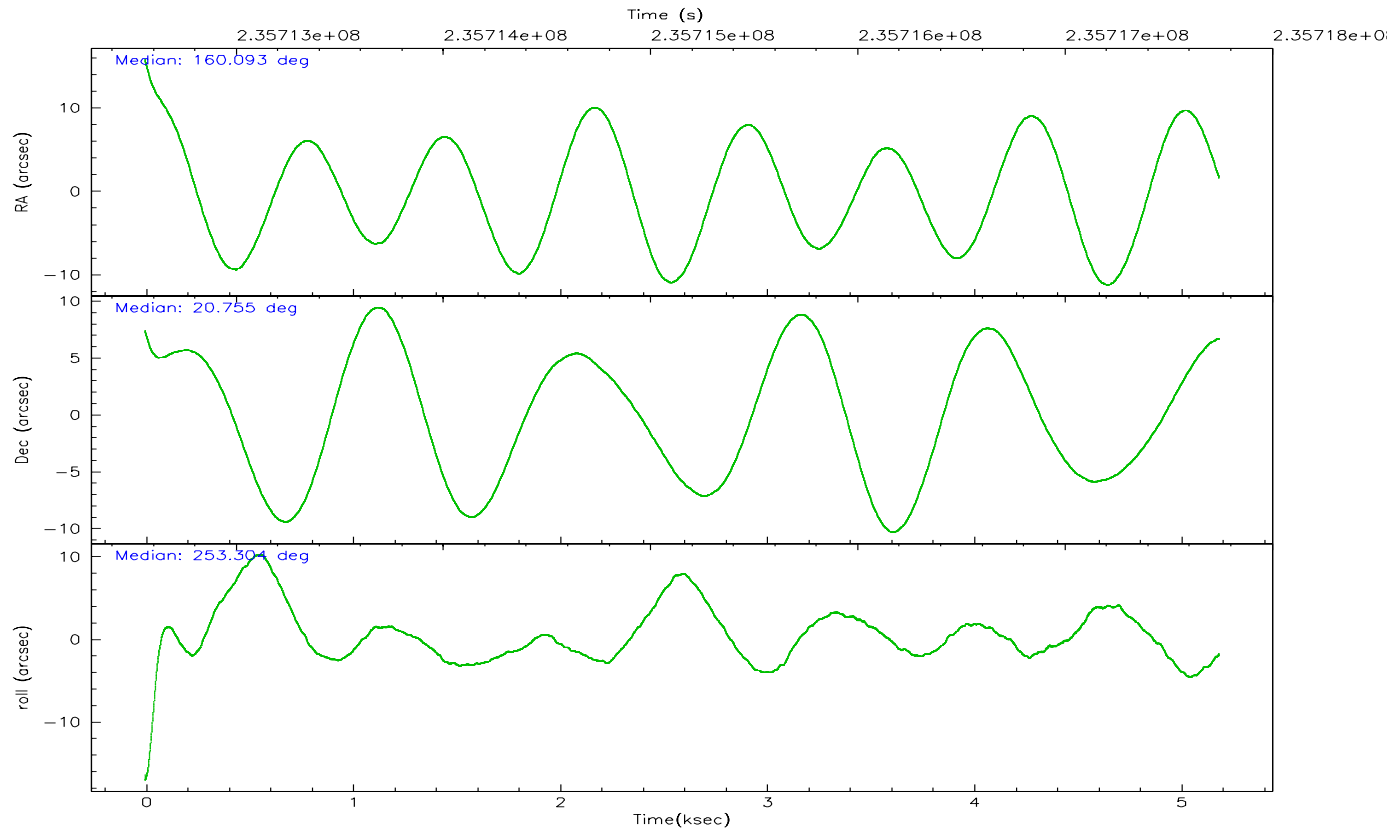
	ccd 7
grade 0 events	1038
	3%
grade 1 events	29
	0%
grade 2 events	3084
	10%
grade 3 events	822
	2%
grade 4 events	823
	2%
grade 5 events	2032
	6%
grade 6 events	6742
	22%
grade 7 events	15067
	50%

2.2 Compared Parameters

Parameter	Planned	Actual	Parameter	Planned	Actual
Instrument	ACIS	ACIS	Obspar format version number	6	6
Detector	ACIS-7	ACIS-7	Obspar file type	PREDICTED	ACTUAL
Grating	NONE	NONE	Obspar update status	NONE	UPDATED
Data mode	FAINT	FAINT	On-chip summing requested	N	N
Observation mode	POINTING	POINTING	Subarray requested	1/2	1/2
Pointing RA	160.085752	160.0929597022576	Subarray start row	0	257
Pointing Dec	20.780837	20.75449775658202	Subarray row count	1024	512
Pointing Roll	253.155539	253.3095640149745	Alternating exposures requested	N	N
SIM focus pos (mm)	-0.684267	-0.6828225247311905	Primary exposure time	0.000000	1.5
SIM defocus (mm)	0	0.001444936568705701			
SIM translation stage pos (mm)	-190.132523	-190.1400660498719			
SIM translation stage offset (mm)	0	0.00754346686406393			
Observation start time	235712740.184000	235711982.23307			
Observation start date	2005-06-21T03:44:36	2005-06-21T03:33:02			
Observation end time	235717740.184000	235718459.72086			
Observation end date	2005-06-21T05:07:56	2005-06-21T05:20:59			
Read mode	TIMED	TIMED			

2.3 Aspect



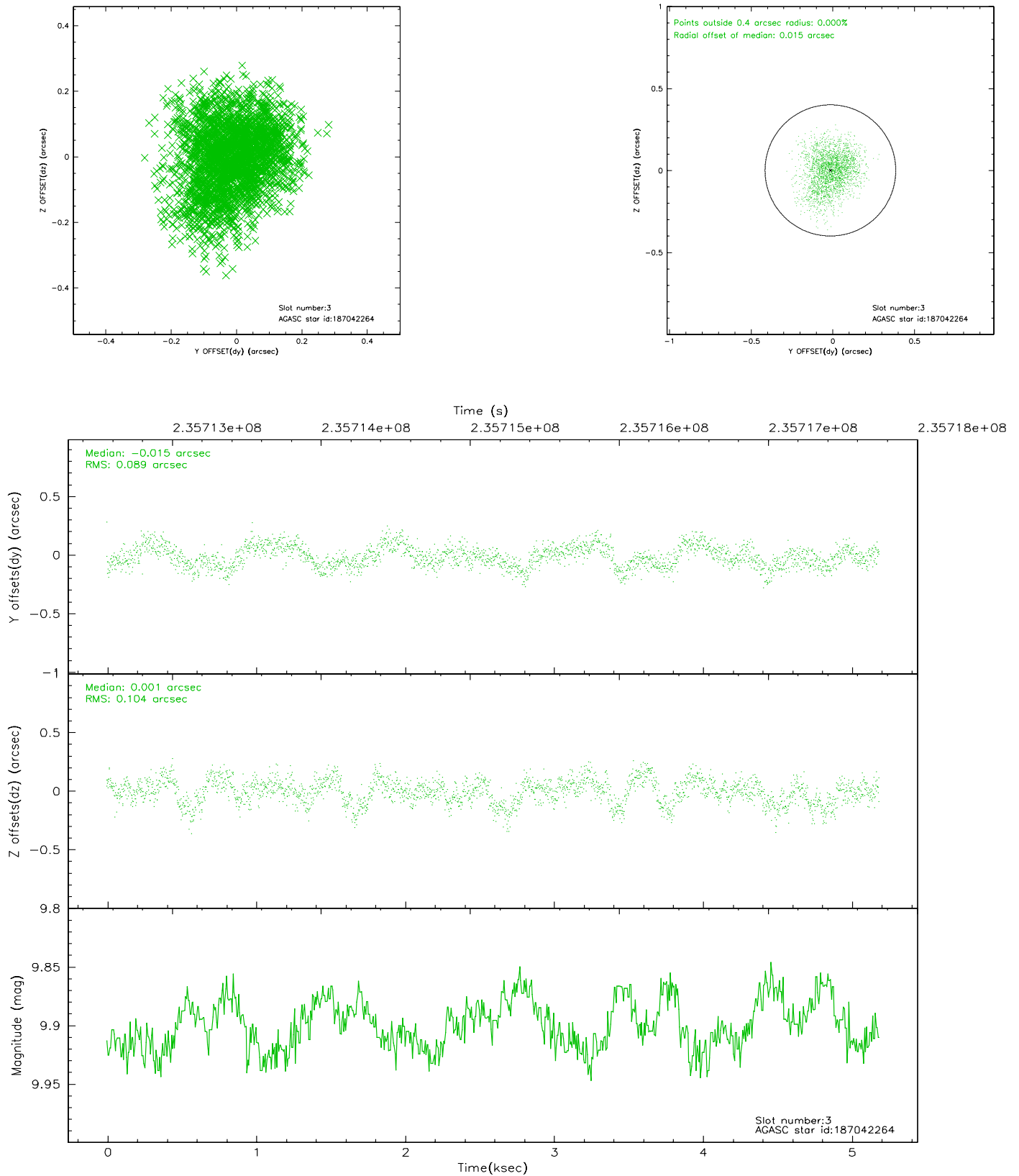


Slot Statistics

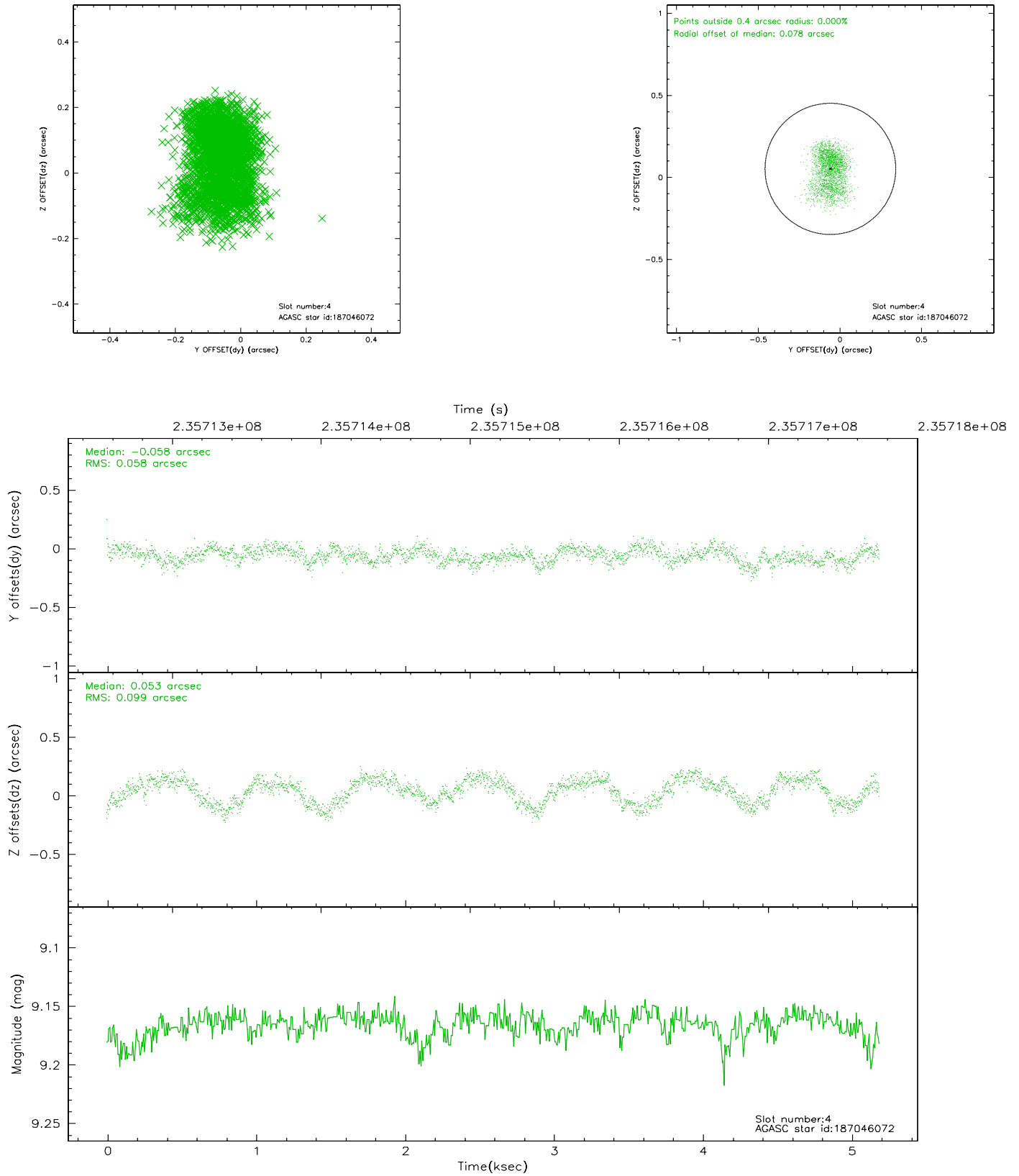
slot	status	id	mag	n_pts	med_dy	med_dz	dr1	dr2	ra	dec	mean_y	mean_z
0	FID	ACIS-S-2	7.10	1266	-0.070	-0.040	0.005	0.009	0.000000	0.000000	-758.86	-1730.99
1	FID	ACIS-S-4	7.21	1266	0.047	0.046	0.006	0.011	0.000000	0.000000	2153.99	176.39
2	FID	ACIS-S-6	7.35	1266	-0.005	0.001	0.007	0.012	0.000000	0.000000	404.67	815.06
3	GUIDE	187042264	9.90	2525	-0.015	0.001	0.149	0.236	159.782172	21.149100	-973.71	-1360.01
4	GUIDE	187046072	9.16	2531	-0.058	0.053	0.123	0.198	159.934660	21.415089	-2038.82	-1147.96
5	GUIDE	187962216	9.85	2532	0.131	-0.407	0.125	0.197	160.305754	21.247116	-1821.07	219.01
6	GUIDE	187963392	8.48	2531	0.105	0.279	0.086	0.145	160.354876	20.553156	520.84	1105.98
7	GUIDE	187045856	10.23	2523	-0.164	0.125	0.258	0.424	159.557970	21.500419	-1969.08	-2443.14

2.4 Star Slots

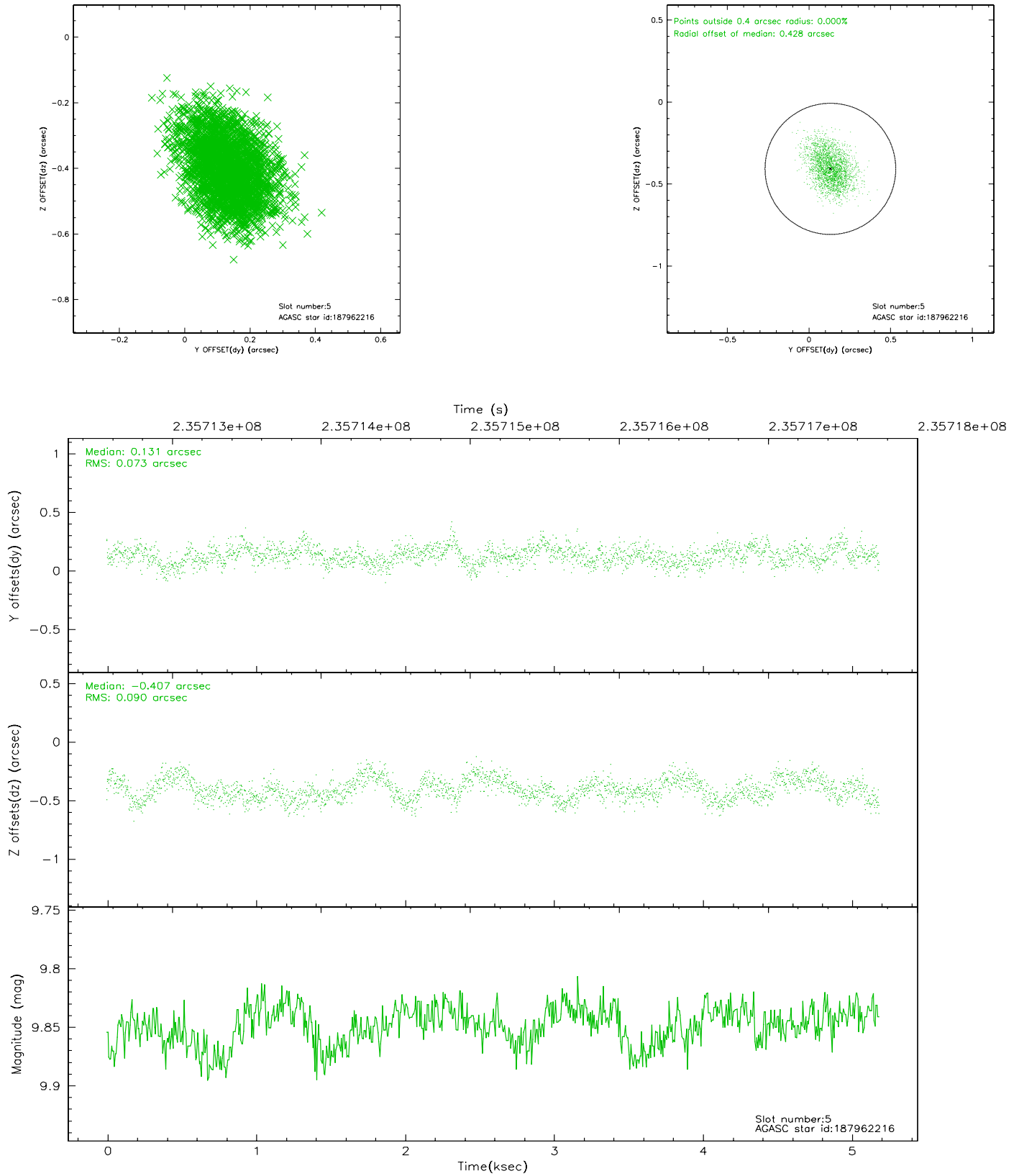
2.4.1 Slot 3



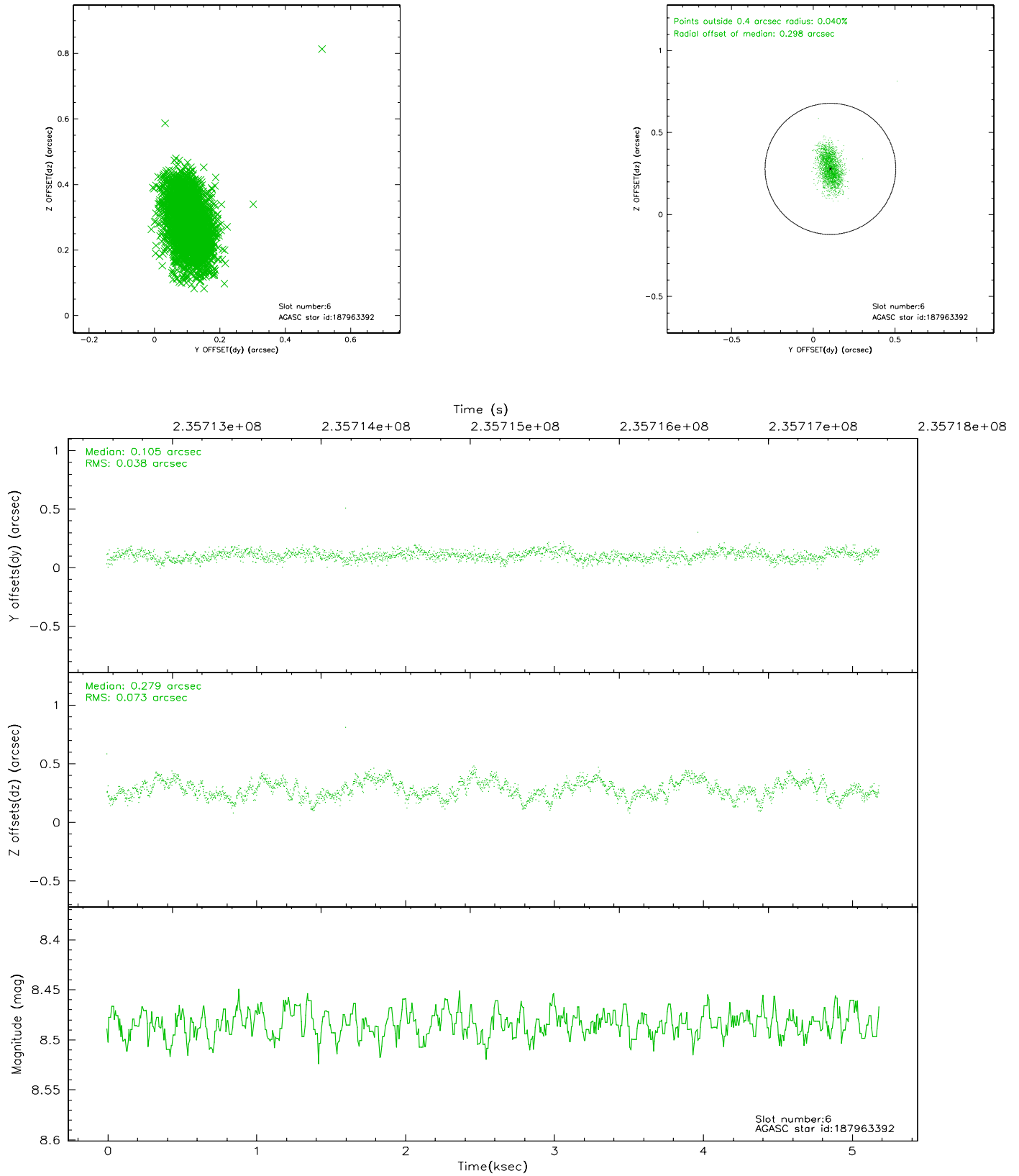
2.4.2 Slot 4



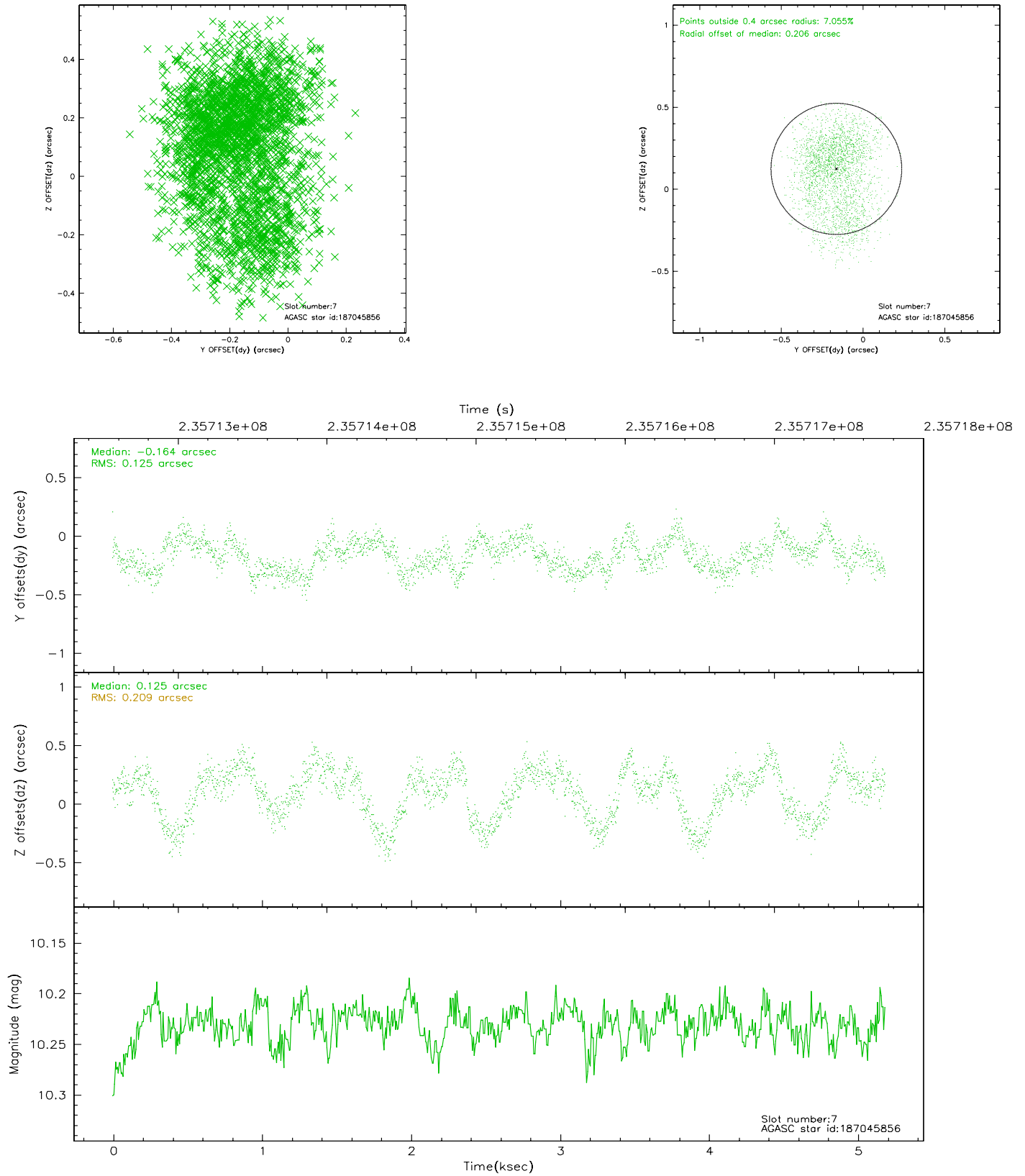
2.4.3 Slot 5



2.4.4 Slot 6

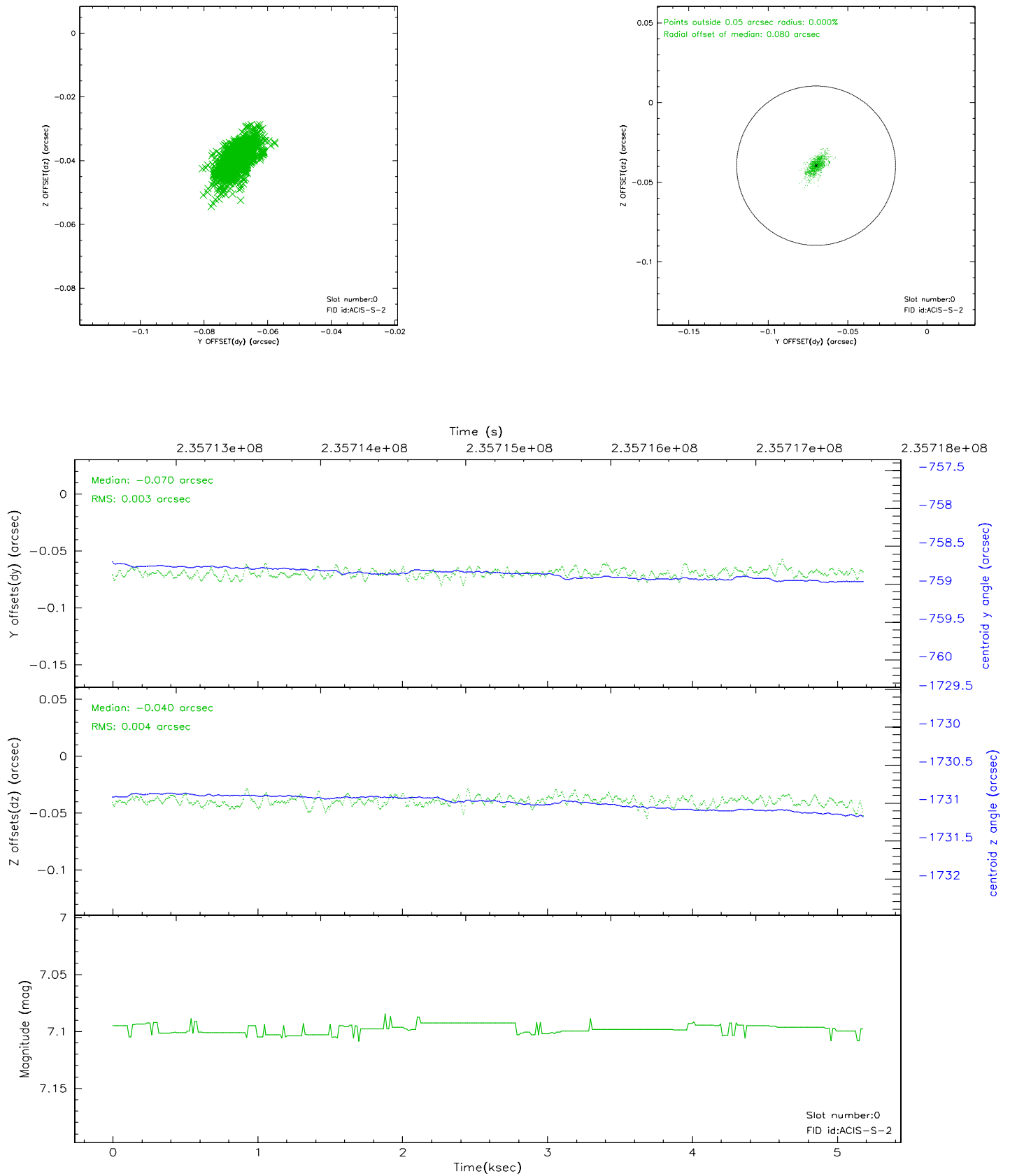


2.4.5 Slot 7

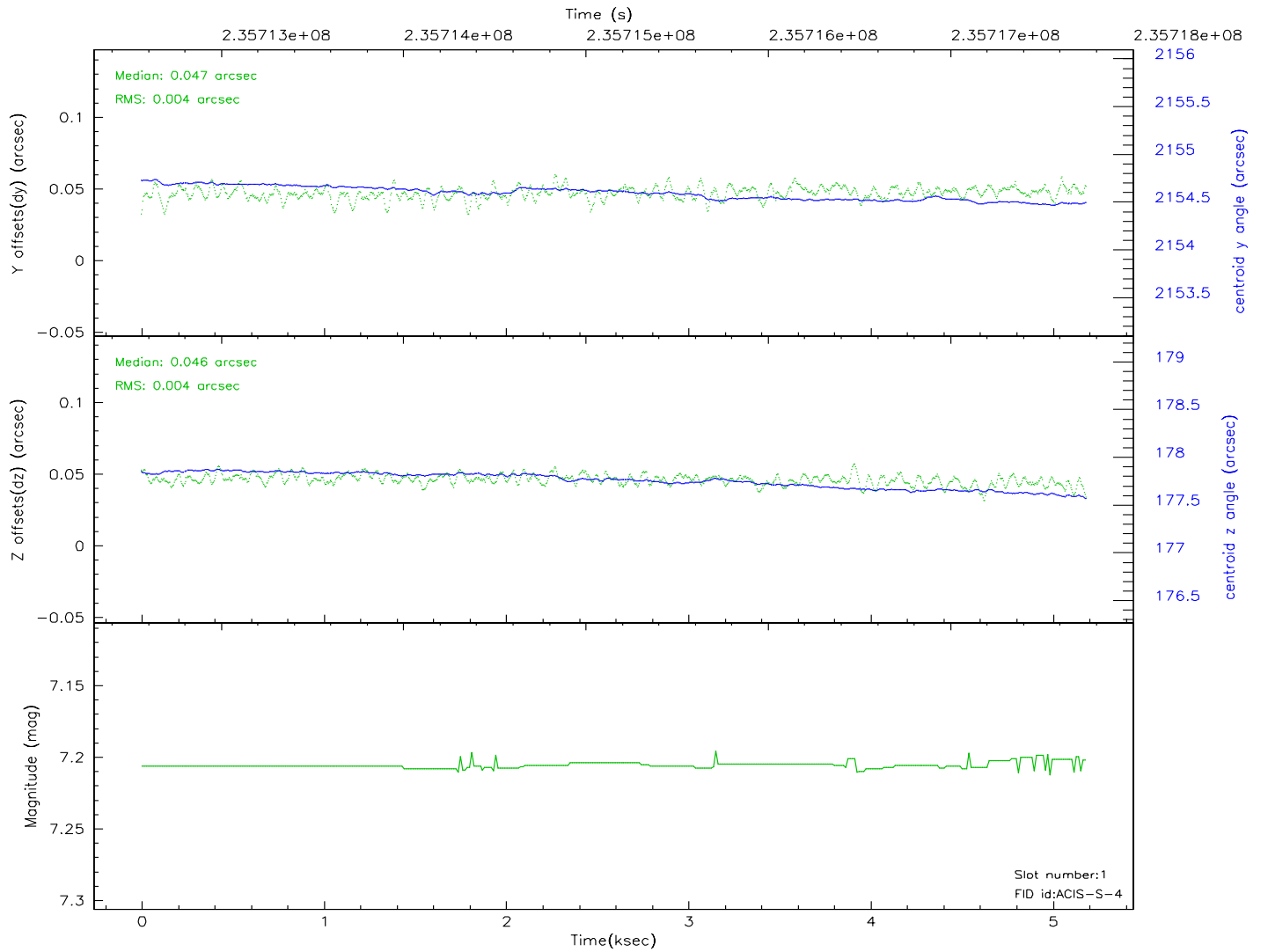
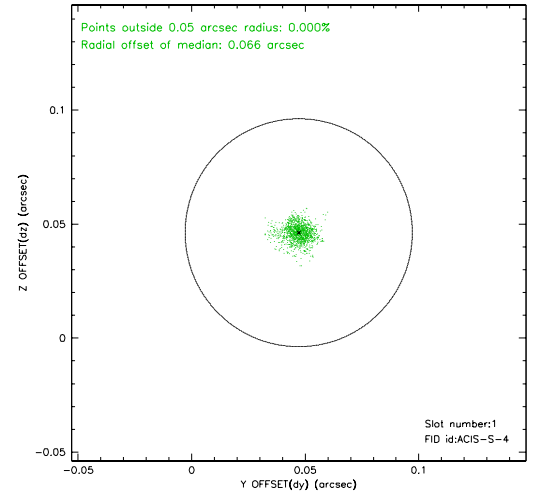
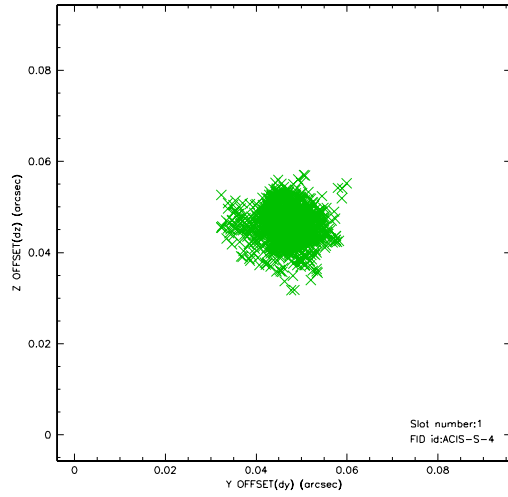


2.5 FID Slots

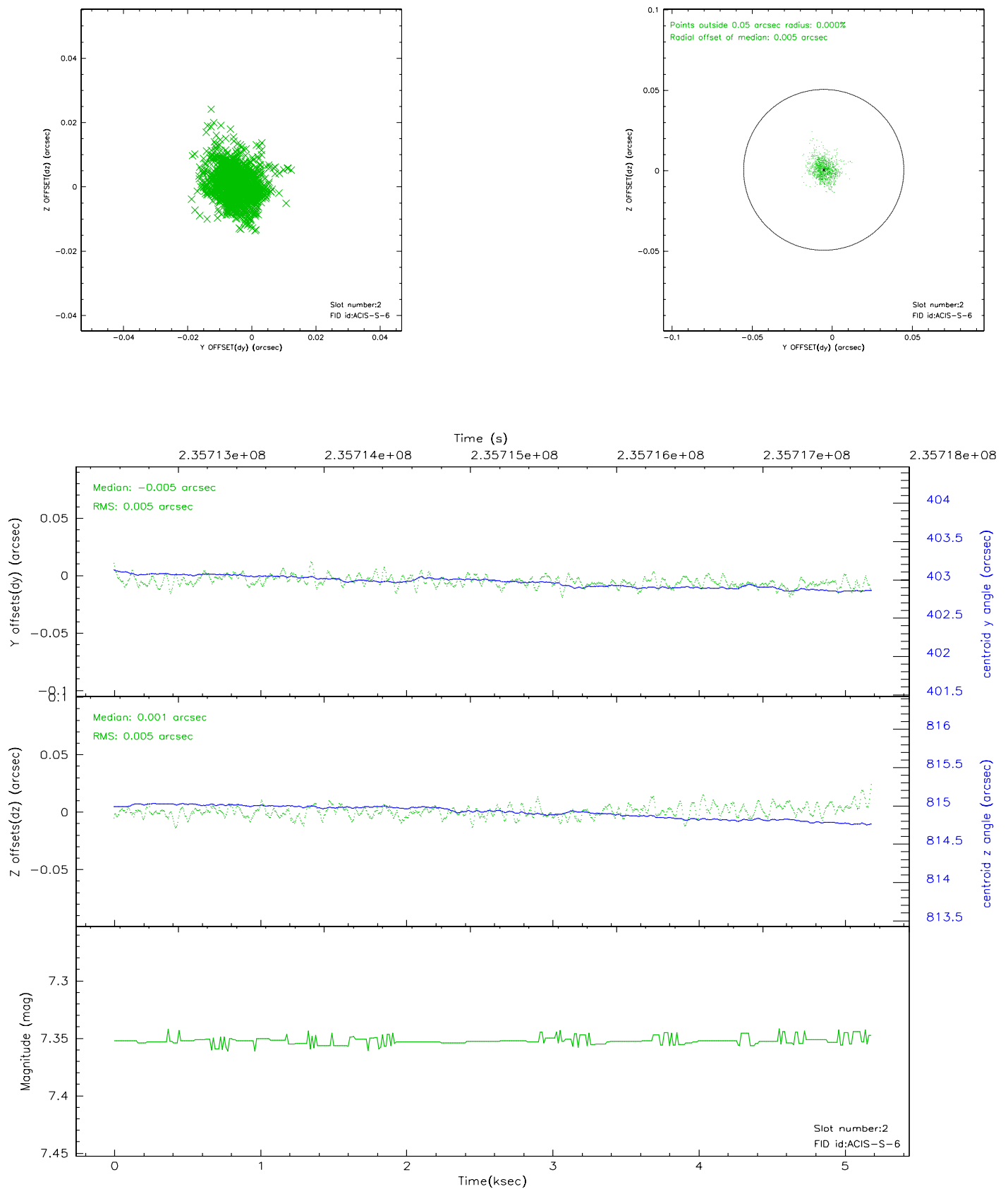
2.5.1 Slot 0



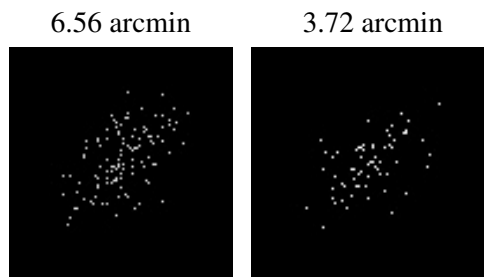
2.5.2 Slot 1



2.5.3 Slot 2



3 Point Sources



A Summary

A.1 Status

V&V Scientist	Jen Lauer
V&V Date (YYYY-MM-DD)	2006.03.10
V&V Edition	1
V&V Disposition and Status	OK
V&V Charge Time	5.1855

A.2 Comments

Star in slot 7 has an RMS deviation > 0.200000 arcsec, within aspect spec.