

V&V Reference Report

L2 ASCDS Version : 8.4.5

Observation 56383 - L2 Version 2
Chandra X-Ray Center

L2 Processing Date : Jun 23 2012

Contents

1	Front	2
2	OBI	3
2.1	OBI	3
2.1.1	Images	3
2.1.2	Bias	3
2.1.3	Parameters	4
2.1.4	Events	4
2.2	Compared Parameters	5
2.3	Star Slots	6
2.4	FID Slots	6
A	Summary	7
A.1	Status	7
A.2	Comments	7

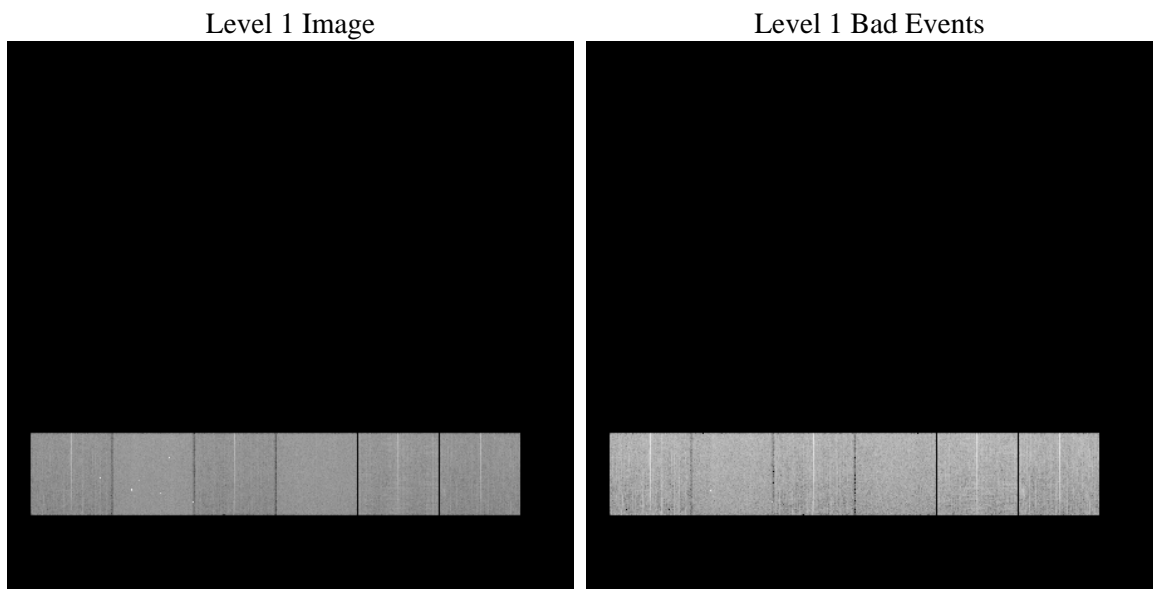
1 Front

seq_num	 	Sequence number
obs_id	56383	Observation id
title	ACIS-456789 diagnostics	Proposal title
observer	CHANDRA engineering request/realtime commanding	Principal investig
object	 	Source name
dtcycle	0	
cycle	P	events from which exps? Prim/Second/Both
ra_targ	0.0	Observer's specified target RA [deg]
dec_targ	0.0	Observer's specified target Dec [deg]
ra_nom	160.03440091403	Nominal RA [deg]
dec_nom	-18.505151999904	Nominal Dec [deg]
roll_nom	312.27530370238	Nominal Roll [deg]
revision	2	Processing version of data
ontime	8457.5999685526	Sum of GTIs [s]
livetime	8350.5047451955	Livetime [s]
ontime4	8457.5999685526	Sum of GTIs [s]
ontime5	8457.5999685526	Sum of GTIs [s]
ontime6	8457.5999685526	Sum of GTIs [s]
ontime7	8457.5999685526	Sum of GTIs [s]
ontime8	8457.5999685526	Sum of GTIs [s]
ontime9	8457.5999685526	Sum of GTIs [s]
l2events	455752	Number of level 2 events

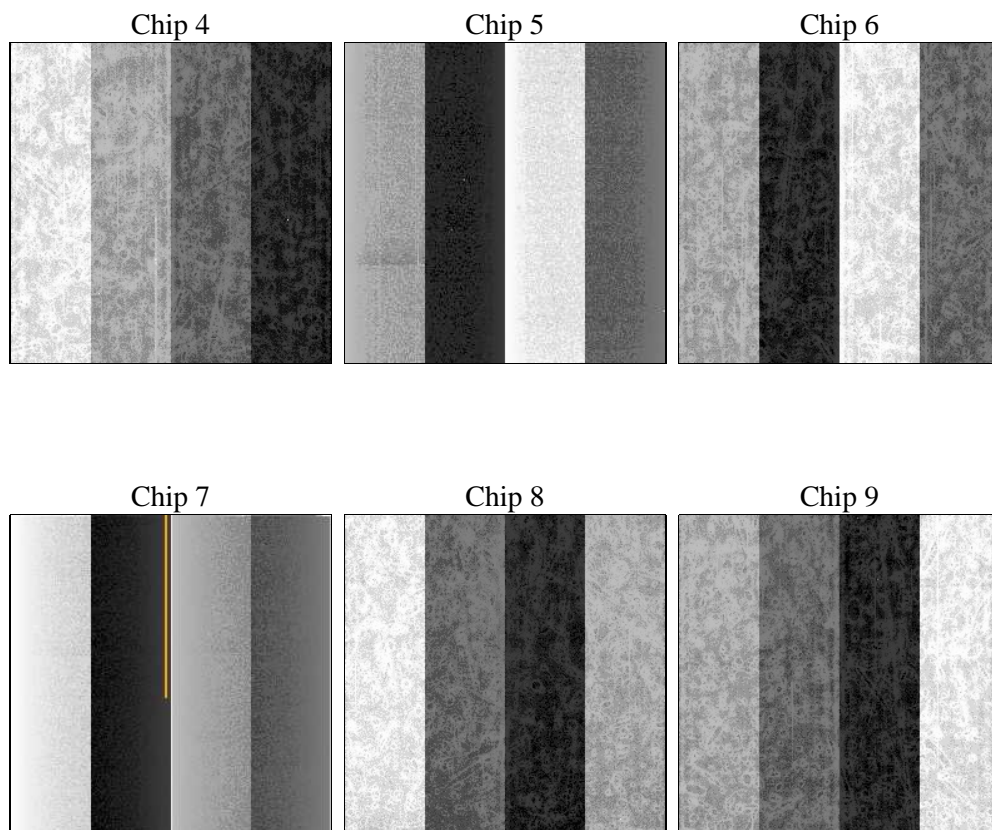
2 OBI

2.1 OBI

2.1.1 Images



2.1.2 Bias



2.1.3 Parameters

obi_num	0	Obi number	sched_exp_time	0.0	[s] Scheduled observation exposure time
ascdsver	8.4.5	Processing system revision	ontime	8457.5999685526	Sum of GTIs [s]
caldsver	4.4.10	 	ontime4	8457.5999685526	Sum of GTIs [s]
date	2012-06-23T05:10:19	Date and time of file creation	ontime5	8457.5999685526	Sum of GTIs [s]
revision	2	Processing version of data	ontime6	8457.5999685526	Sum of GTIs [s]
			ontime7	8457.5999685526	Sum of GTIs [s]
			ontime8	8457.5999685526	Sum of GTIs [s]
			ontime9	8457.5999685526	Sum of GTIs [s]
			l1events	948273	Number of level 1 events

2.1.4 Events

	ccd 4	ccd 5	ccd 6	ccd 7	ccd 8	ccd 9		ccd 4	ccd 5	ccd 6	ccd 7	ccd 8	ccd 9
level 1 events	142931	181403	141598	173743	164938	143660	grade 0 events	38286	16737	36171	18502	40619	36052
rejected events	76015	72771	71959	69381	81010	75535		26%	9%	25%	10%	24%	25%
rejected %	53%	40%	50%	39%	49%	52%	grade 1 events	373	314	208	164	288	291
								0%	0%	0%	0%	0%	0%
							grade 2 events	10773	38250	12675	22612	15807	11940
								7%	21%	8%	13%	9%	8%
							grade 3 events	4599	4641	4537	9614	6298	4635
								3%	2%	3%	5%	3%	3%
							grade 4 events	4562	4561	4566	9400	6123	4547
								3%	2%	3%	5%	3%	3%
							grade 5 events	4214	9510	4354	11112	5708	4935
								2%	5%	3%	6%	3%	3%
							grade 6 events	8696	44443	11690	44234	15081	10951
								6%	24%	8%	25%	9%	7%
							grade 7 events	71428	62947	67397	58105	75014	70309
								49%	34%	47%	33%	45%	48%

2.2 Compared Parameters

Parameter	Planned	Actual	Parameter	Planned	Actual
Instrument	ACIS	ACIS	Obspar format version number	7	7
Detector	ACIS-456789	ACIS-456789	Obspar file type	PREDICTED	ACTUAL
Grating	NONE	NONE	Obspar update status	NONE	UPDATED
Data mode	FAINT	FAINT	Number of optional ACIS chips dropped	0	0
Observation mode	SECONDARY	SECONDARY	On-chip summing requested	N	N
[deg] Pointing RA	0	160.0344009140292	Subarray requested	NONE	NONE
[deg] Pointing Dec	0	-18.50515199990362	Alternating exposures requested	N	N
[deg] Pointing Roll	0.0	312.2753037023804	[s] Primary exposure time	3.2	3.2
[mm] SIM focus pos	-1.429586	-0.6828225247311905			
[mm] SIM defocus	0.1037507710433287	0.8505141146731063			
[mm] SIM translation stage pos	250.455976	250.466033080201			
[mm] SIM translation stage offset	0	-0.01005468664627074			
[s] Observation start time (MET)	385456671.041969	385456670.01698			
Observation start date	2010-03-20T07:17:51	2010-03-20T07:17:50			
[s] Observation end time (MET)	385469547.092622	385469546.06763			
Observation end date	2010-03-20T10:52:27	2010-03-20T10:52:26			
Read mode	TIMED	TIMED			

2.3 Star Slots

2.4 FID Slots

A Summary

A.1 Status

V&V Scientist	Jen Lauer
V&V Date (YYYY-MM-DD)	2012.06.29
V&V Edition	1
V&V Disposition and Status	OK
V&V Charge Time	8.4575999685526

A.2 Comments