

V&V Reference Report

L2 ASCDS Version : 8.4.5

Observation 56263 - L2 Version 2
Chandra X-Ray Center

L2 Processing Date : Jun 25 2012

Contents

1	Front	2
2	OBI	3
2.1	OBI	3
2.1.1	Images	3
2.1.2	Bias	3
2.1.3	Parameters	4
2.1.4	Events	4
2.2	Compared Parameters	5
2.3	Star Slots	6
2.4	FID Slots	6
A	Summary	7
A.1	Status	7
A.2	Comments	7

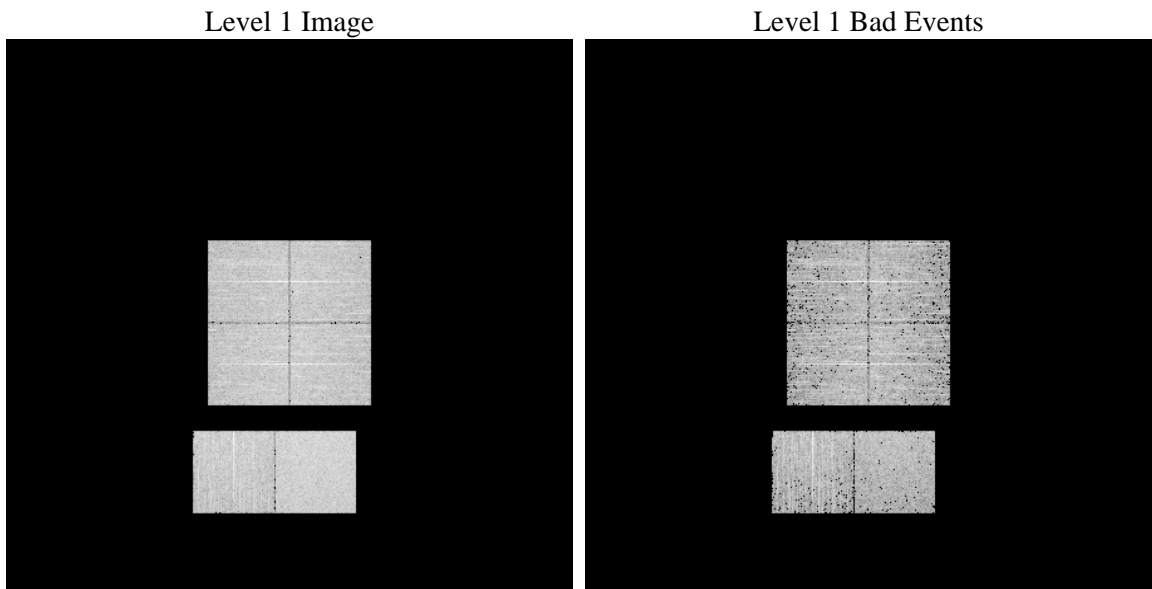
1 Front

seq_num	 	Sequence number
obs_id	56263	Observation id
title	ACIS-012367 diagnostics	Proposal title
observer	CHANDRA engineering request/realtime commanding	Principal investig
object	 	Source name
dtcycle	0	
cycle	P	events from which exps? Prim/Second/Both
ra_targ	0.0	Observer's specified target RA [deg]
dec_targ	0.0	Observer's specified target Dec [deg]
ra_nom	212.98956962192	Nominal RA [deg]
dec_nom	-1.725734552078	Nominal Dec [deg]
roll_nom	225.15912662728	Nominal Roll [deg]
revision	2	Processing version of data
ontime	3282.3545737863	Sum of GTIs [s]
livetime	3240.7914237763	Livetime [s]
ontime0	3282.313533783	Sum of GTIs [s]
ontime1	3282.2724937797	Sum of GTIs [s]
ontime2	3282.2314537764	Sum of GTIs [s]
ontime3	3282.3956137896	Sum of GTIs [s]
ontime6	3282.1904137731	Sum of GTIs [s]
ontime7	3282.3545737863	Sum of GTIs [s]
l2events	155916	Number of level 2 events

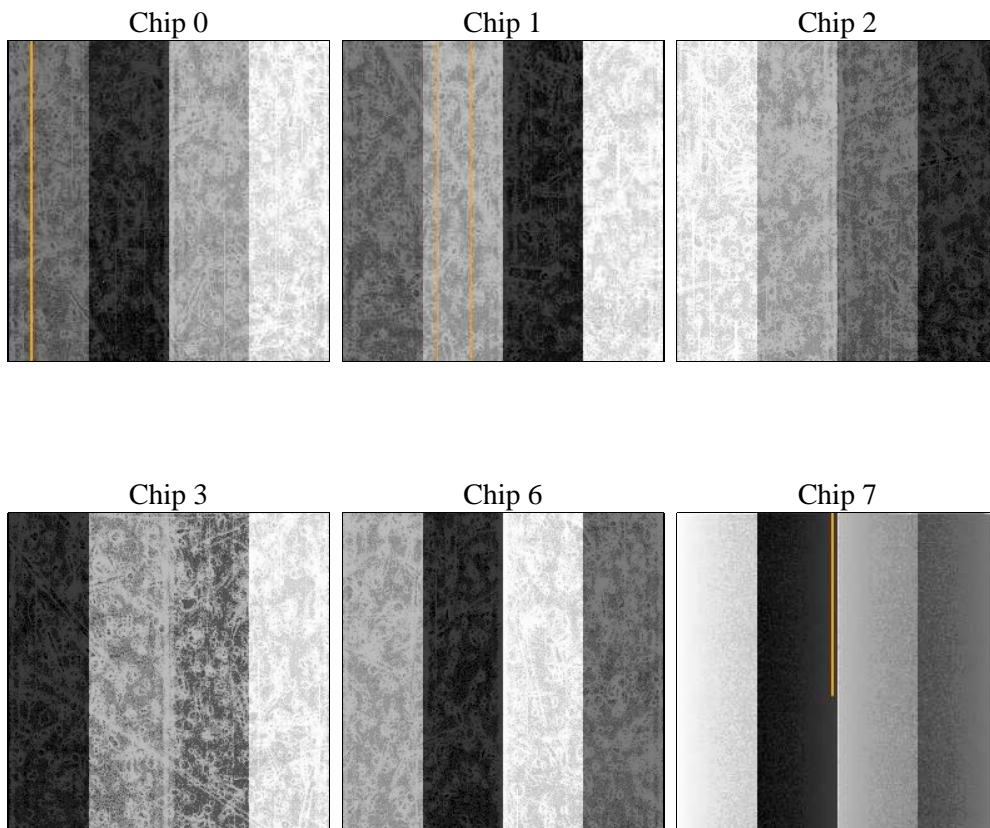
2 OBI

2.1 OBI

2.1.1 Images



2.1.2 Bias



2.1.3 Parameters

obi_num	0	Obi number	sched_exp_time	0.0	[s] Scheduled observation exposure time
ascdsver	8.4.5	Processing system revision	ontime	3282.3545737863	Sum of GTIs [s]
caldsver	4.4.10	 	ontime0	3282.313533783	Sum of GTIs [s]
date	2012-06-26T01:32:33	Date and time of file creation	ontime1	3282.2724937797	Sum of GTIs [s]
revision	2	Processing version of data	ontime2	3282.2314537764	Sum of GTIs [s]
			ontime3	3282.3956137896	Sum of GTIs [s]
			ontime6	3282.1904137731	Sum of GTIs [s]
			ontime7	3282.3545737863	Sum of GTIs [s]
			l1events	324274	Number of level 1 events

2.1.4 Events

	ccd 0	ccd 1	ccd 2	ccd 3	ccd 6	ccd 7		ccd 0	ccd 1	ccd 2	ccd 3	ccd 6	ccd 7
level 1 events	50000	50762	52392	52196	54207	64717	grade 0 events	13159	13030	13536	13382	13448	6933
rejected events	25185	25788	27324	27330	28345	25617		26%	25%	25%	25%	24%	10%
rejected %	50%	50%	52%	52%	52%	39%	grade 1 events	78	77	102	107	80	46
								0%	0%	0%	0%	0%	0%
							grade 2 events	4495	4625	4399	4503	4619	8523
								8%	9%	8%	8%	8%	13%
							grade 3 events	1765	1690	1742	1680	1686	3563
								3%	3%	3%	3%	3%	5%
							grade 4 events	1653	1690	1728	1636	1714	3590
								3%	3%	3%	3%	3%	5%
							grade 5 events	1514	1645	1444	1717	1669	4176
								3%	3%	2%	3%	3%	6%
							grade 6 events	3743	3939	3663	3665	4395	16491
								7%	7%	6%	7%	8%	25%
							grade 7 events	23593	24066	25778	25506	26596	21395
								47%	47%	49%	48%	49%	33%

2.2 Compared Parameters

Parameter	Planned	Actual	Parameter	Planned	Actual
Instrument	ACIS	ACIS	Obspar format version number	7	7
Detector	ACIS-012367	ACIS-012367	Obspar file type	PREDICTED	ACTUAL
Grating	NONE	NONE	Obspar update status	NONE	UPDATED
Data mode	FAINT	FAINT	Number of optional ACIS chips dropped	0	0
Observation mode	SECONDARY	SECONDARY	On-chip summing requested	N	N
[deg] Pointing RA	0	212.989569621924	Subarray requested	NONE	NONE
[deg] Pointing Dec	0	-1.725734552078015	Alternating exposures requested	N	N
[deg] Pointing Roll	0.0	225.1591266272758	[s] Primary exposure time	3.2	3.2
[mm] SIM focus pos	-1.429586	-0.6828225247311905			
[mm] SIM defocus	0.1037507710433287	0.8505141146731063			
[mm] SIM translation stage pos	250.455976	250.466033080201			
[mm] SIM translation stage offset	0	-0.01005468664627074			
[s] Observation start time (MET)	390221754.834181	390221753.80917			
Observation start date	2010-05-14T10:55:55	2010-05-14T10:55:53			
[s] Observation end time (MET)	390234091.734809	390234090.7098			
Observation end date	2010-05-14T14:21:32	2010-05-14T14:21:30			
Read mode	TIMED	TIMED			

2.3 Star Slots

2.4 FID Slots

A Summary

A.1 Status

V&V Scientist	Beth Sundheim
V&V Date (YYYY-MM-DD)	2012.07.02
V&V Edition	1
V&V Disposition and Status	OK
V&V Charge Time	3.2823545737863

A.2 Comments