

V&V Reference Report

L2 ASCDS Version : 8.4.5

Observation 56253 - L2 Version 2
Chandra X-Ray Center

L2 Processing Date : Jun 25 2012

Contents

1	Front	2
2	OBI	3
2.1	OBI	3
2.1.1	Images	3
2.1.2	Bias	3
2.1.3	Parameters	4
2.1.4	Events	4
2.2	Compared Parameters	5
2.3	Star Slots	6
2.4	FID Slots	6
A	Summary	7
A.1	Status	7
A.2	Comments	7

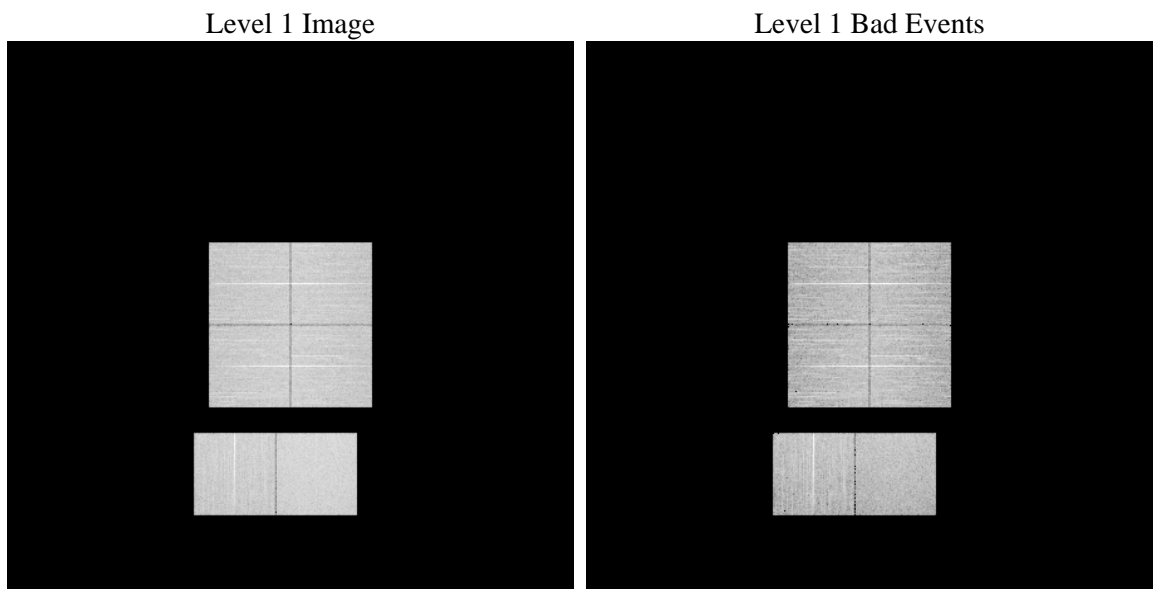
1 Front

seq_num	 	Sequence number
obs_id	56253	Observation id
title	ACIS-012367 diagnostics	Proposal title
observer	CHANDRA engineering request/realtime commanding	Principal investig
object	 	Source name
dtcycle	0	
cycle	P	events from which exps? Prim/Second/Both
ra_targ	0.0	Observer's specified target RA [deg]
dec_targ	0.0	Observer's specified target Dec [deg]
ra_nom	220.04048388862	Nominal RA [deg]
dec_nom	-40.292379258273	Nominal Dec [deg]
roll_nom	326.07068549376	Nominal Roll [deg]
revision	2	Processing version of data
ontime	8275.0443162918	Sum of GTIs [s]
livetime	8170.2607225254	Livetime [s]
ontime0	8275.0032762885	Sum of GTIs [s]
ontime1	8271.7212359905	Sum of GTIs [s]
ontime2	8274.9211962819	Sum of GTIs [s]
ontime3	8275.0853562951	Sum of GTIs [s]
ontime6	8274.8801562786	Sum of GTIs [s]
ontime7	8275.0443162918	Sum of GTIs [s]
l2events	386636	Number of level 2 events

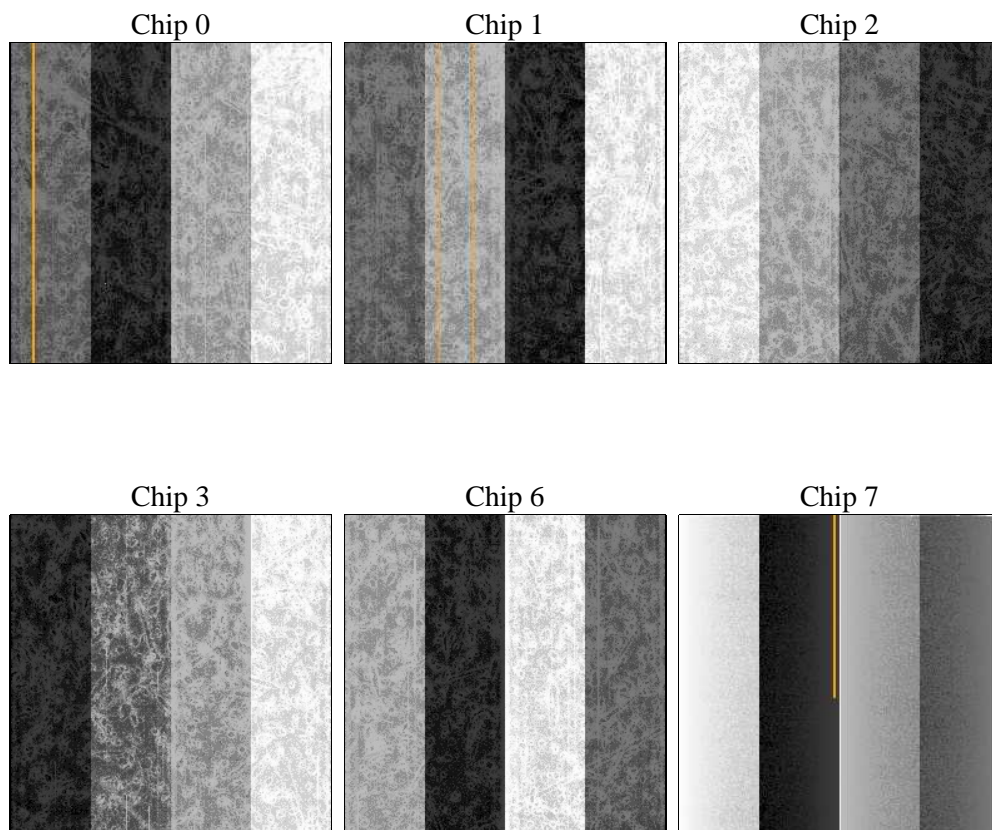
2 OBI

2.1 OBI

2.1.1 Images



2.1.2 Bias



2.1.3 Parameters

obi_num	0	Obi number	sched_exp_time	0.0	[s] Scheduled observation exposure time
ascdsver	8.4.5	Processing system revision	ontime	8275.0443162918	Sum of GTIs [s]
caldsver	4.4.10	 	ontime0	8275.0032762885	Sum of GTIs [s]
date	2012-06-26T02:23:28	Date and time of file creation	ontime1	8271.7212359905	Sum of GTIs [s]
revision	2	Processing version of data	ontime2	8274.9211962819	Sum of GTIs [s]
			ontime3	8275.0853562951	Sum of GTIs [s]
			ontime6	8274.8801562786	Sum of GTIs [s]
			ontime7	8275.0443162918	Sum of GTIs [s]
			l1events	831593	Number of level 1 events

2.1.4 Events

	ccd 0	ccd 1	ccd 2	ccd 3	ccd 6	ccd 7		ccd 0	ccd 1	ccd 2	ccd 3	ccd 6	ccd 7
level 1 events	128289	131509	132714	135644	137587	165850	grade 0 events	32507	30977	33329	34015	30917	15999
rejected events	66427	68917	71454	73121	73969	68824		25%	23%	25%	25%	22%	9%
rejected %	51%	52%	53%	53%	53%	41%	grade 1 events	207	182	241	234	170	132
								0%	0%	0%	0%	0%	0%
							grade 2 events	11763	13458	10419	10737	13734	21467
								9%	10%	7%	7%	9%	12%
							grade 3 events	4087	3912	4251	4312	3818	8333
								3%	2%	3%	3%	2%	5%
							grade 4 events	3992	3913	4219	4282	3874	8228
								3%	2%	3%	3%	2%	4%
							grade 5 events	3927	3789	3535	4103	3848	10089
								3%	2%	2%	3%	2%	6%
							grade 6 events	9535	10355	9063	9199	11311	43027
								7%	7%	6%	6%	8%	25%
							grade 7 events	62271	64923	67657	68762	69915	58575
								48%	49%	50%	50%	50%	35%

2.2 Compared Parameters

Parameter	Planned	Actual	Parameter	Planned	Actual
Instrument	ACIS	ACIS	Obspar format version number	7	7
Detector	ACIS-012367	ACIS-012367	Obspar file type	PREDICTED	ACTUAL
Grating	NONE	NONE	Obspar update status	NONE	UPDATED
Data mode	FAINT	FAINT	Number of optional ACIS chips dropped	0	0
Observation mode	SECONDARY	SECONDARY	On-chip summing requested	N	N
[deg] Pointing RA	0	220.0404838886185	Subarray requested	NONE	NONE
[deg] Pointing Dec	0	-40.29237925827278	Alternating exposures requested	N	N
[deg] Pointing Roll	0.0	326.0706854937602	[s] Primary exposure time	3.2	3.2
[mm] SIM focus pos	-1.429586	-0.6828225247311905			
[mm] SIM defocus	0.1037507710433287	0.8505141146731063			
[mm] SIM translation stage pos	250.455976	250.466033080201			
[mm] SIM translation stage offset	0	-0.01005468664627074			
[s] Observation start time (MET)	390483763.297516	390483762.27251			
Observation start date	2010-05-17T11:42:43	2010-05-17T11:42:42			
[s] Observation end time (MET)	390494136.298044	390494135.27304			
Observation end date	2010-05-17T14:35:36	2010-05-17T14:35:35			
Read mode	TIMED	TIMED			

2.3 Star Slots

2.4 FID Slots

A Summary

A.1 Status

V&V Scientist	Beth Sundheim
V&V Date (YYYY-MM-DD)	2012.07.03
V&V Edition	1
V&V Disposition and Status	OK
V&V Charge Time	8.2750443162918

A.2 Comments