

V&V Reference Report

L2 ASCDS Version : 8.4.3

Observation 55683 - L2 Version 2
Chandra X-Ray Center

L2 Processing Date : Feb 2 2012

Contents

1	Front	2
2	OBI	3
2.1	OBI	3
2.1.1	Images	3
2.1.2	Bias	3
2.1.3	Parameters	4
2.1.4	Events	4
2.2	Compared Parameters	5
2.3	Star Slots	6
2.4	FID Slots	6
A	Summary	7
A.1	Status	7
A.2	Comments	7

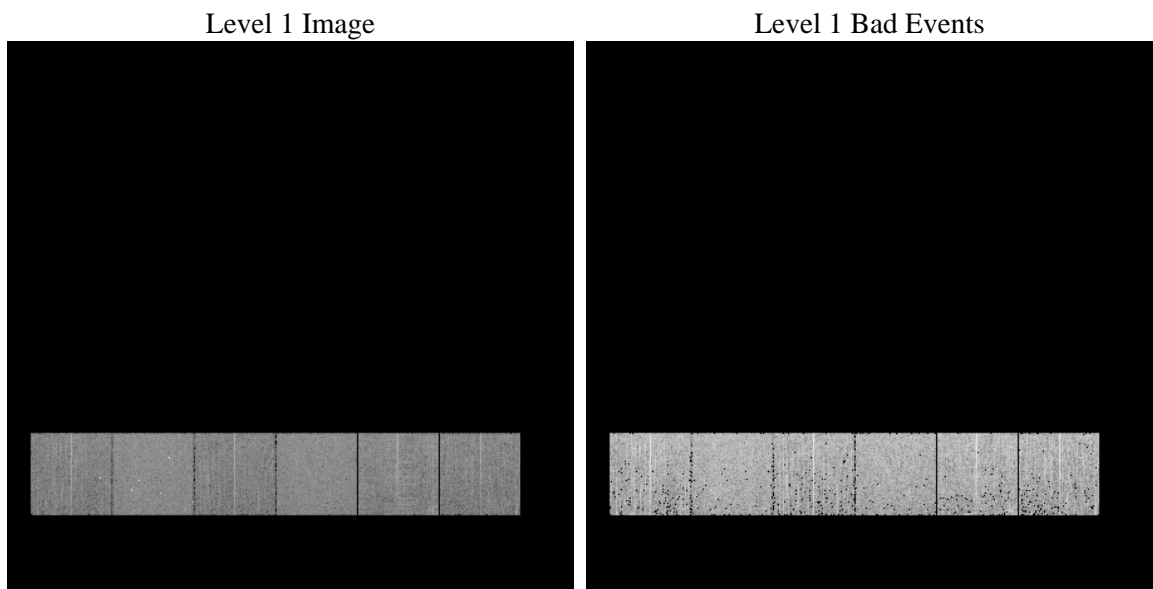
1 Front

seq_num	 	Sequence number
obs_id	55683	Observation id
title	ACIS-456789 diagnostics	Proposal title
observer	CHANDRA engineering request/realtime commanding	Principal investig
object	 	Source name
dtcycle	0	
cycle	P	events from which exps? Prim/Second/Both
ra_targ	0.0	Observer's specified target RA [deg]
dec_targ	0.0	Observer's specified target Dec [deg]
ra_nom	257.00227223576	Nominal RA [deg]
dec_nom	-50.935974226062	Nominal Dec [deg]
roll_nom	105.74442533959	Nominal Roll [deg]
revision	2	Processing version of data
ontime	3282.3246744275	Sum of GTIs [s]
livetime	3240.7619030213	Livetime [s]
ontime4	3282.2015544176	Sum of GTIs [s]
ontime5	3282.2836344242	Sum of GTIs [s]
ontime6	3282.2425944209	Sum of GTIs [s]
ontime7	3282.3246744275	Sum of GTIs [s]
ontime8	3282.1605144143	Sum of GTIs [s]
ontime9	3282.3657144308	Sum of GTIs [s]
l2events	150019	Number of level 2 events

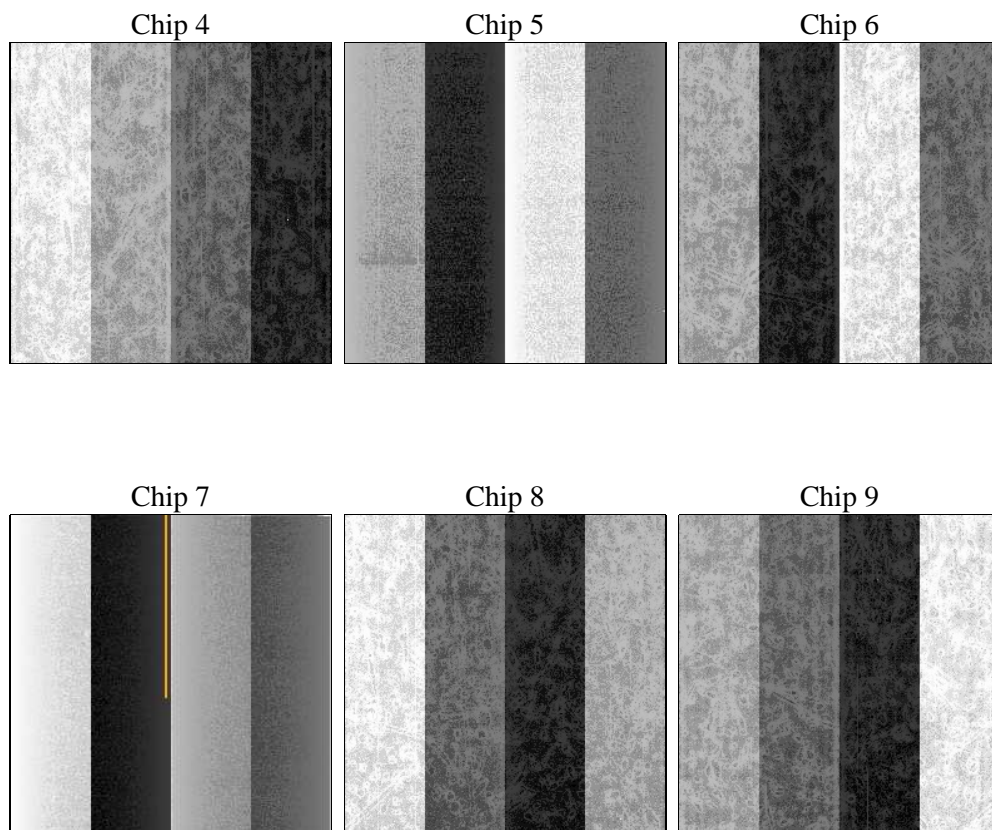
2 OBI

2.1 OBI

2.1.1 Images



2.1.2 Bias



2.1.3 Parameters

obi_num	0	Obi number	sched_exp_time	0.0	[s] Scheduled observation exposure time
ascdsver	8.4.3	Processing system revision	ontime	3282.3246744275	Sum of GTIs [s]
caldsver	4.4.7	 	ontime4	3282.2015544176	Sum of GTIs [s]
date	2012-02-03T02:24:00	Date and time of file creation	ontime5	3282.2836344242	Sum of GTIs [s]
revision	2	Processing version of data	ontime6	3282.2425944209	Sum of GTIs [s]
			ontime7	3282.3246744275	Sum of GTIs [s]
			ontime8	3282.1605144143	Sum of GTIs [s]
			ontime9	3282.3657144308	Sum of GTIs [s]
			l1events	327106	Number of level 1 events

2.1.4 Events

	ccd 4	ccd 5	ccd 6	ccd 7	ccd 8	ccd 9		ccd 4	ccd 5	ccd 6	ccd 7	ccd 8	ccd 9
level 1 events	48809	65614	47859	60548	56104	48172	grade 0 events	12475	6851	11511	5819	12724	11326
rejected events	27072	26961	25566	25629	28817	26410		25%	10%	24%	9%	22%	23%
rejected %	55%	41%	53%	42%	51%	54%	grade 1 events	113	185	68	59	70	81
								0%	0%	0%	0%	0%	0%
							grade 2 events	3562	12971	4021	7681	5473	3816
								7%	19%	8%	12%	9%	7%
							grade 3 events	1464	1695	1489	3083	2123	1516
								2%	2%	3%	5%	3%	3%
							grade 4 events	1441	1574	1451	3148	2048	1500
								2%	2%	3%	5%	3%	3%
							grade 5 events	1569	3519	1664	4086	2086	1760
								3%	5%	3%	6%	3%	3%
							grade 6 events	2795	15562	3821	15188	4919	3604
								5%	23%	7%	25%	8%	7%
							grade 7 events	25390	23257	23834	21484	26661	24569
								52%	35%	49%	35%	47%	51%

2.2 Compared Parameters

Parameter	Planned	Actual	Parameter	Planned	Actual
Instrument	ACIS	ACIS	Obspar format version number	7	7
Detector	ACIS-456789	ACIS-456789	Obspar file type	PREDICTED	ACTUAL
Grating	NONE	NONE	Obspar update status	NONE	UPDATED
Data mode	FAINT	FAINT	Number of optional ACIS chips dropped	0	0
Observation mode	SECONDARY	SECONDARY	On-chip summing requested	N	N
[deg] Pointing RA	0	257.0022722357634	Subarray requested	NONE	NONE
[deg] Pointing Dec	0	-50.93597422606189	Alternating exposures requested	N	N
[deg] Pointing Roll	0.0	105.7444253395912	[s] Primary exposure time	3.2	3.2
[mm] SIM focus pos	-1.429586	-1.428180813131781			
[mm] SIM defocus	0.1037507710433287	0.1051558262725154			
[mm] SIM translation stage pos	250.455976	250.466033080201			
[mm] SIM translation stage offset	0	-0.01005468664627074			
[s] Observation start time (MET)	412842075.095236	412842074.07024			
Observation start date	2011-01-31T06:21:15	2011-01-31T06:21:14			
[s] Observation end time (MET)	412846986.895491	412846985.8705			
Observation end date	2011-01-31T07:43:07	2011-01-31T07:43:05			
Read mode	TIMED	TIMED			

2.3 Star Slots

2.4 FID Slots

A Summary

A.1 Status

V&V Scientist	Joy Nichols
V&V Date (YYYY-MM-DD)	2012.02.03
V&V Edition	1
V&V Disposition and Status	OK
V&V Charge Time	3.2823246744275

A.2 Comments