

V&V Reference Report

L2 ASCDS Version : 8.5.1

Observation 5533 - L2 Version 3
Chandra X-Ray Center

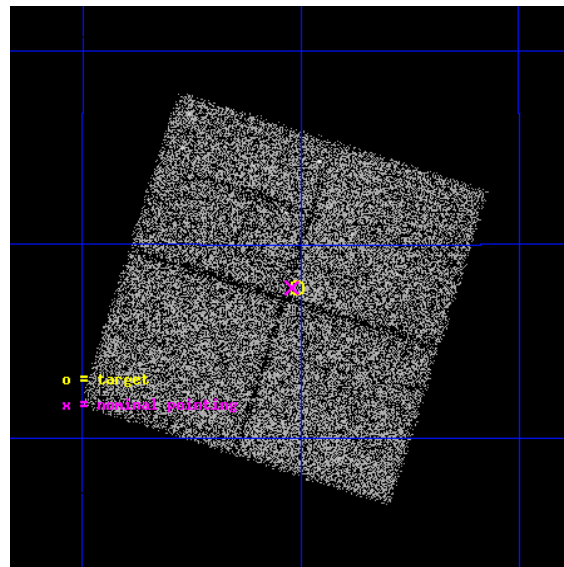
L2 Processing Date : Dec 16 2012

Contents

1	Front	2
2	OBI	3
2.1	OBI	3
2.1.1	Images	3
2.1.2	Bias	3
2.1.3	Parameters	4
2.1.4	Events	4
2.2	Compared Parameters	5
2.3	Aspect	6
2.4	Star Slots	9
2.4.1	Slot 3	9
2.4.2	Slot 4	10
2.4.3	Slot 5	11
2.4.4	Slot 6	12
2.4.5	Slot 7	13
2.5	FID Slots	14
2.5.1	Slot 0	14
2.5.2	Slot 1	15
2.5.3	Slot 2	16
A	Summary	17
A.1	Status	17
A.2	Comments	17

1 Front

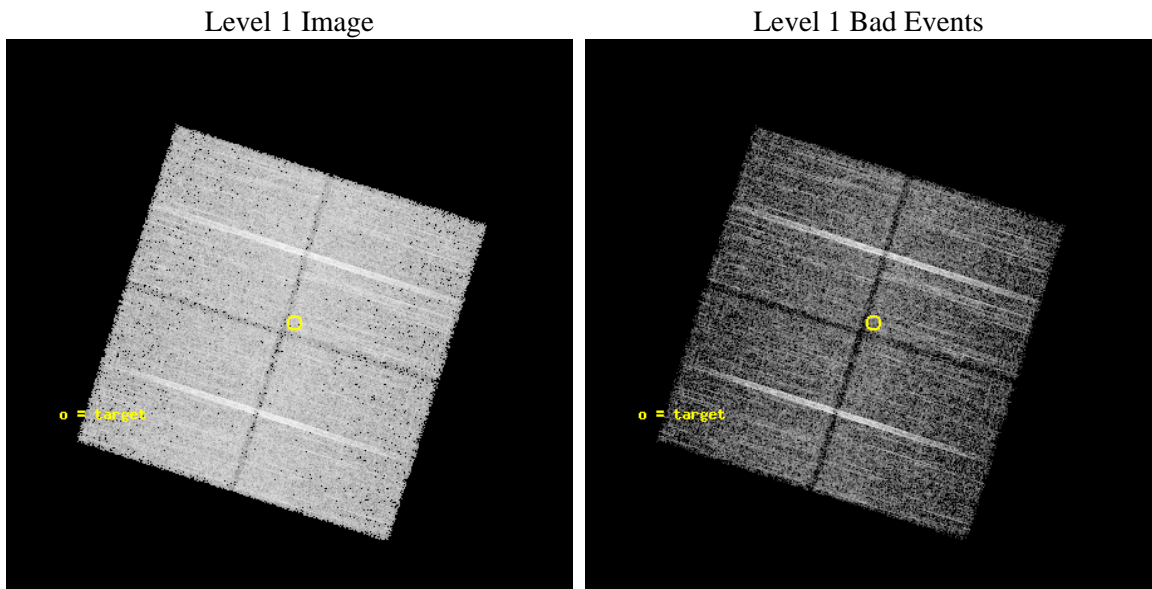
seq_num	500527	Sequence number
obs_id	5533	Observation id
title	A Search for the X-ray counterpart of the Unidentified Gamma-Ray source 3EG J2020+4017	Proposal title
observer	Dr. Martin Weisskopf	Principal investigator
object	3EG J2020+4017	Source name
dtcycle	0	
cycle	P	events from which exps? Prim/Second/Both
ra_targ	305.254167	Observer's specified target RA [deg]
dec_targ	40.296667	Observer's specified target Dec [deg]
ra_nom	305.26019128368	Nominal RA [deg]
dec_nom	40.296206656519	Nominal Dec [deg]
roll_nom	17.632775453159	Nominal Roll [deg]
revision	3	Processing version of data
ontime	14348.983916819	Sum of GTIs [s]
livetime	14161.503878378	Livetime [s]
ontime0	14348.860796809	Sum of GTIs [s]
ontime1	14345.760846674	Sum of GTIs [s]
ontime2	14348.942876816	Sum of GTIs [s]
ontime3	14348.983916819	Sum of GTIs [s]
l2events	49511	Number of level 2 events



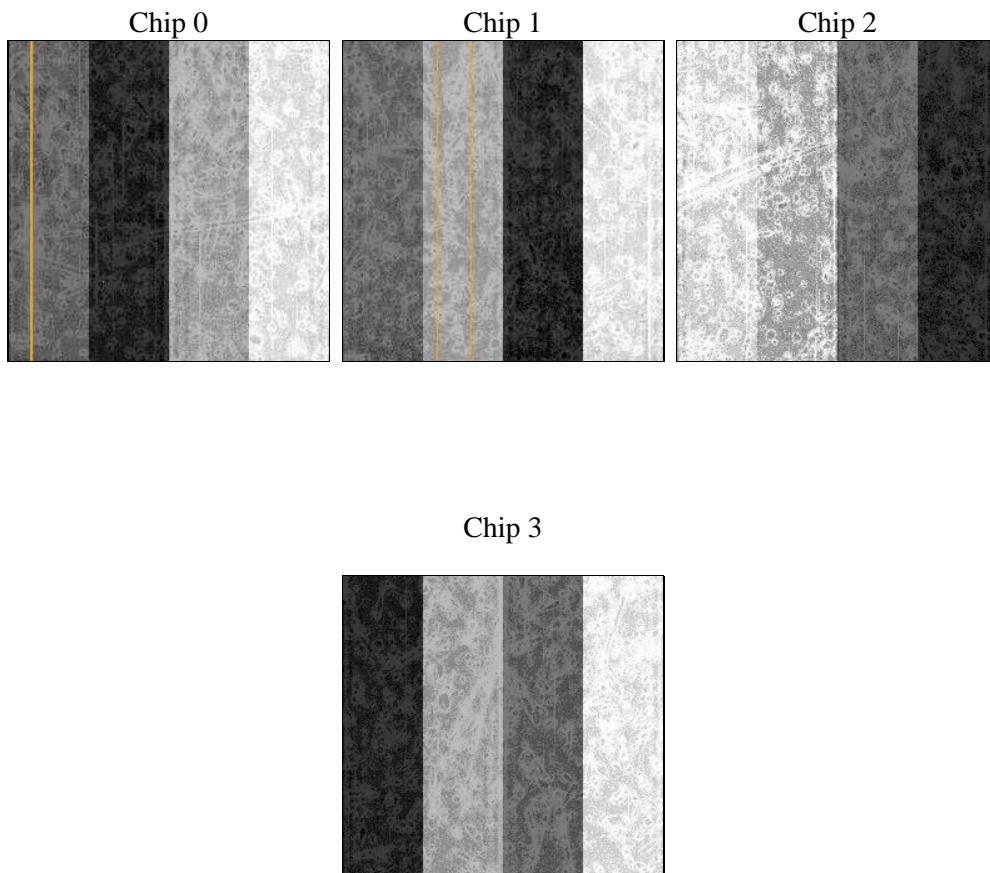
2 OBI

2.1 OBI

2.1.1 Images



2.1.2 Bias



2.1.3 Parameters

obi_num	0	Obi number	sched_exp_time	14278.877000	[s] Scheduled observation exposure time
ascdsver	8.5.1	Processing system revision	ontime	14348.983916819	Sum of GTIs [s]
caldbver	4.5.5	 	ontime0	14348.860796809	Sum of GTIs [s]
date	2012-12-17T02:28:50	Date and time of file creation	ontime1	14345.760846674	Sum of GTIs [s]
revision	3	Processing version of data	ontime2	14348.942876816	Sum of GTIs [s]
			ontime3	14348.983916819	Sum of GTIs [s]
			l1events	407703	Number of level 1 events

2.1.4 Events

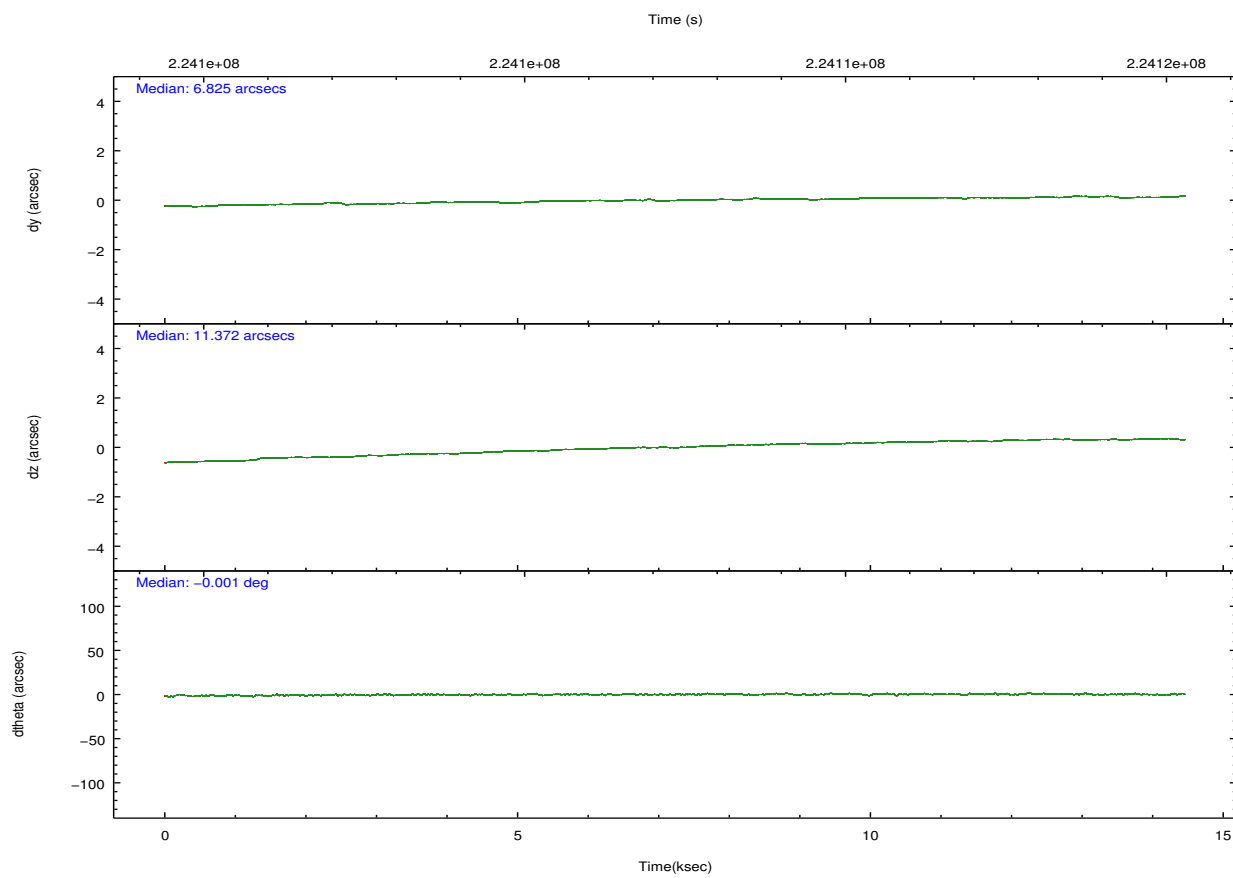
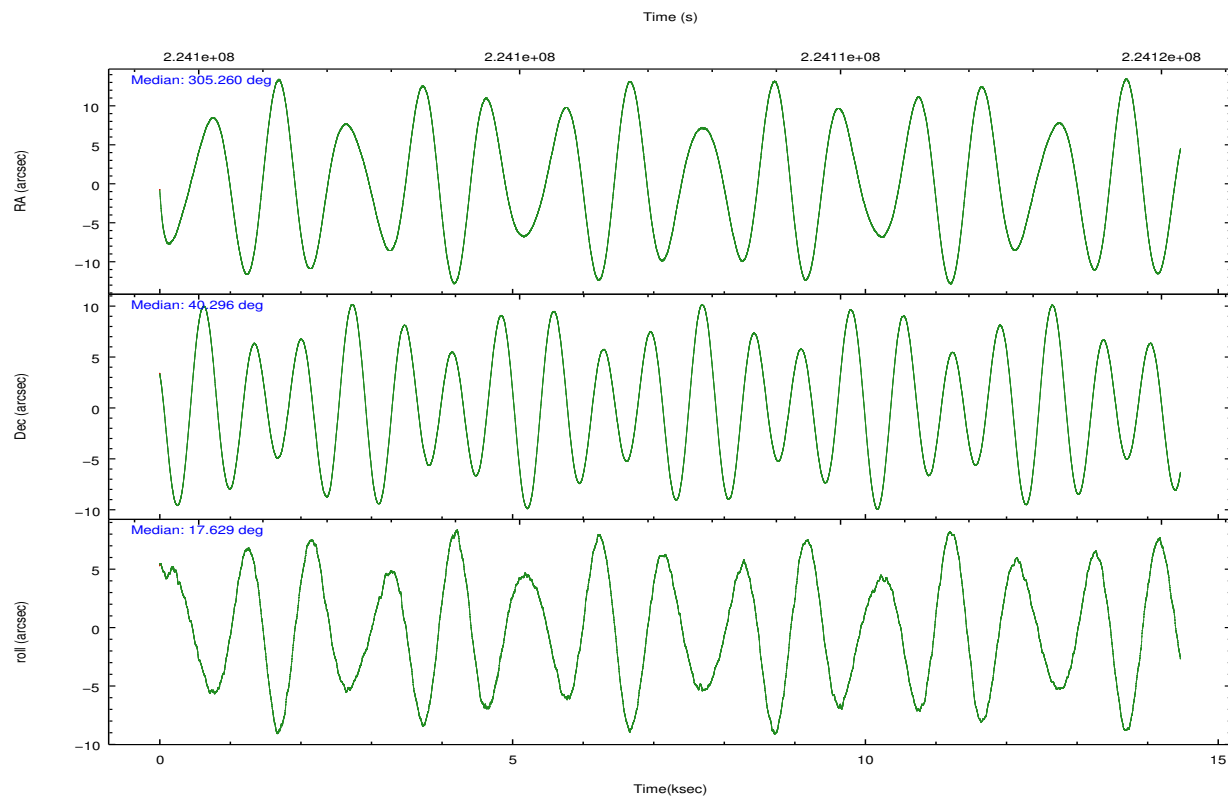
	ccd 0	ccd 1	ccd 2	ccd 3
level 1 events	98130	97956	105756	105861
rejected events	83371	82834	91456	92709
rejected %	84%	84%	86%	87%

	ccd 0	ccd 1	ccd 2	ccd 3
grade 0 events	7040	6709	7056	6005
	7%	6%	6%	5%
grade 1 events	77	57	74	66
	0%	0%	0%	0%
grade 2 events	2896	3052	2669	2493
	2%	3%	2%	2%
grade 3 events	1389	1356	1196	1257
	1%	1%	1%	1%
grade 4 events	1209	1396	1258	1181
	1%	1%	1%	1%
grade 5 events	4364	4621	4112	4768
	4%	4%	3%	4%
grade 6 events	2230	2615	2122	2229
	2%	2%	2%	2%
grade 7 events	78925	78150	87269	87862
	80%	79%	82%	82%

2.2 Compared Parameters

Parameter	Planned	Actual	Parameter	Planned	Actual
Instrument	ACIS	ACIS	Obspar format version number	7	7
Detector	ACIS-0123	ACIS-0123	Obspar file type	PREDICTED	ACTUAL
Grating	NONE	NONE	Obspar update status	NONE	UPDATED
Data mode	VFAINT	VFAINT	Number of optional ACIS chips dropped	0	0
Observation mode	POINTING	POINTING	On-chip summing requested	N	N
[deg] Pointing RA	305.236144	305.2601912836781	Subarray requested	NONE	NONE
[deg] Pointing Dec	40.275929	40.2962066565194	Alternating exposures requested	N	N
[deg] Pointing Roll	17.439640	17.63277545315884	[s] Primary exposure time	0.000000	3.1
[mm] SIM focus pos	-0.782348	-0.7809083437167272			
[mm] SIM defocus	0	0.001439871863259334			
[mm] SIM translation stage pos	-233.592463	-233.5874344608287			
[mm] SIM translation stage offset	0	-0.005018542100998502			
[s] Observation start time (MET)	224100298.184000	224099417.43029			
Observation start date	2005-02-06T18:03:54	2005-02-06T17:50:17			
[s] Observation end time (MET)	224114577.184000	224114818.56848			
Observation end date	2005-02-06T22:01:53	2005-02-06T22:06:58			
Read mode	TIMED	TIMED			

2.3 Aspect

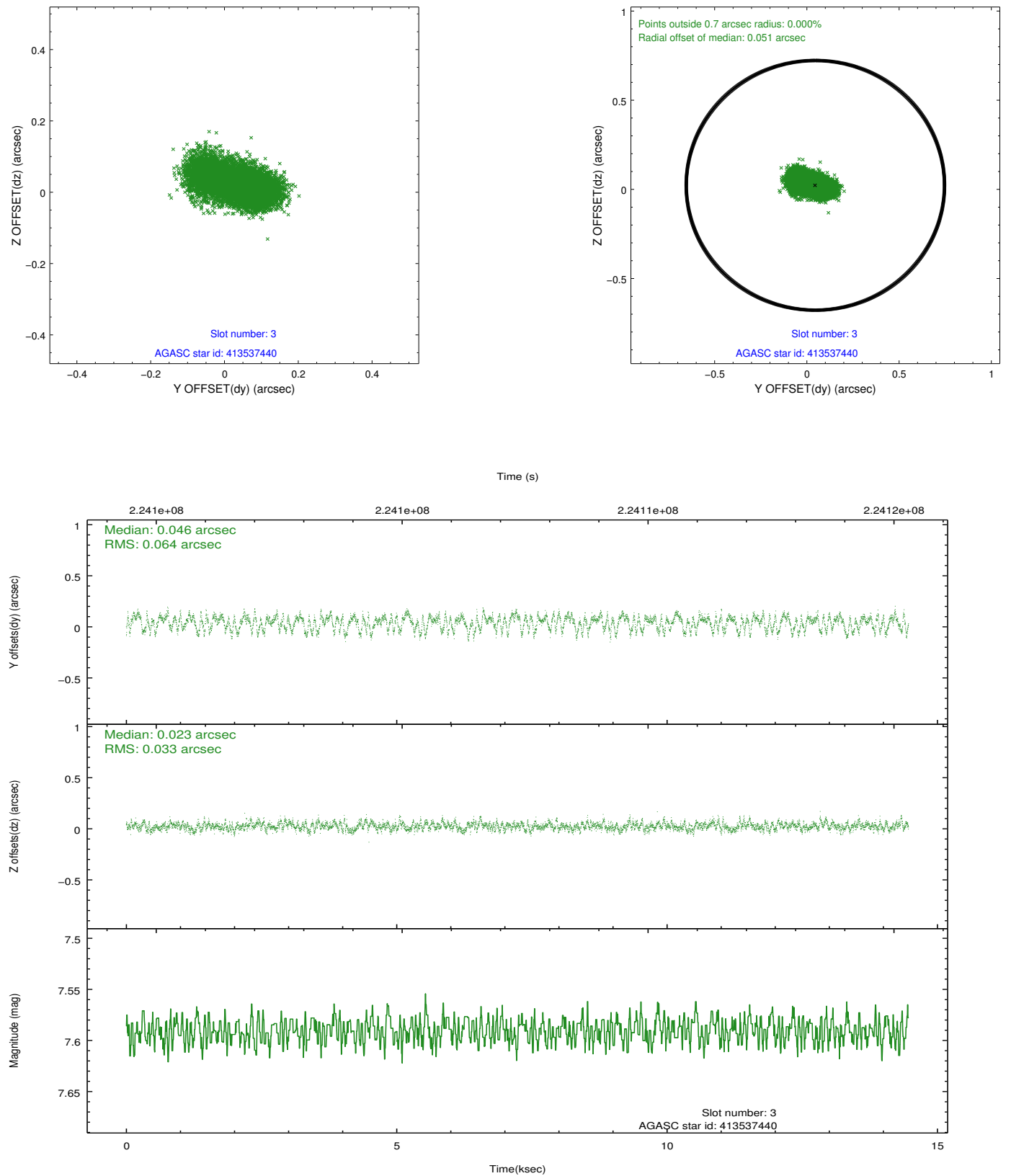


Slot Statistics

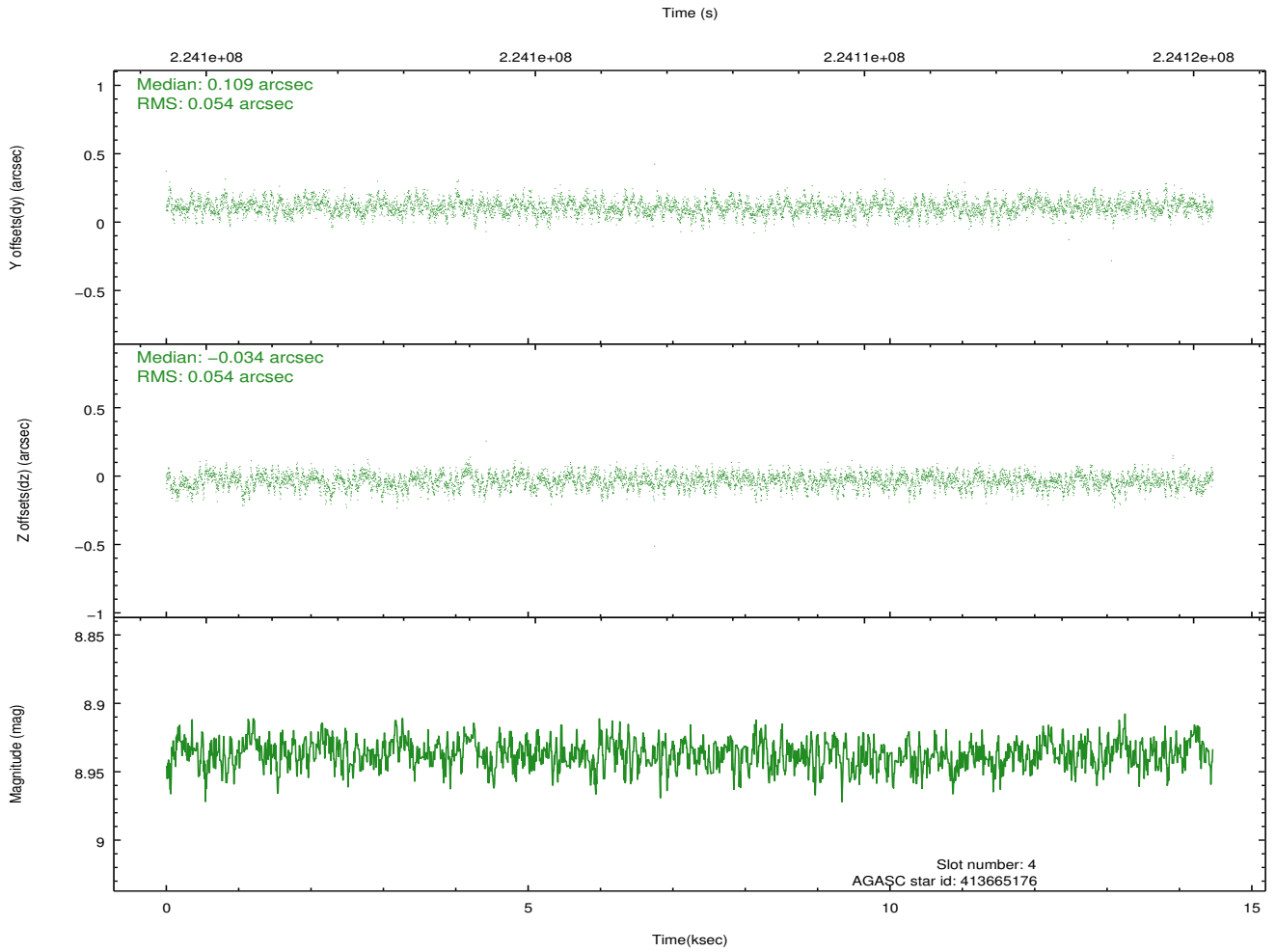
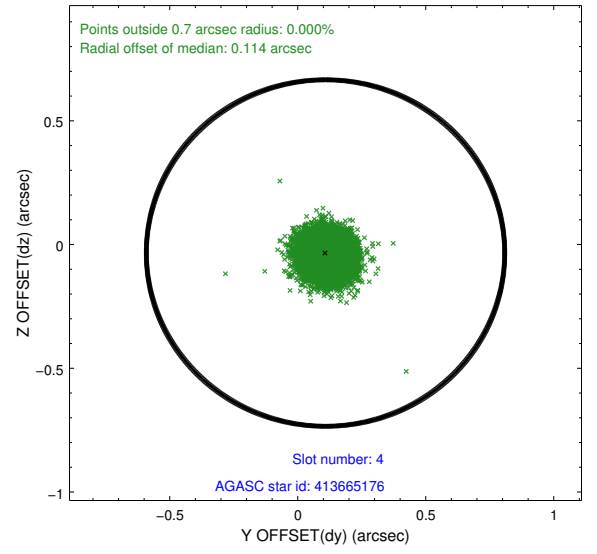
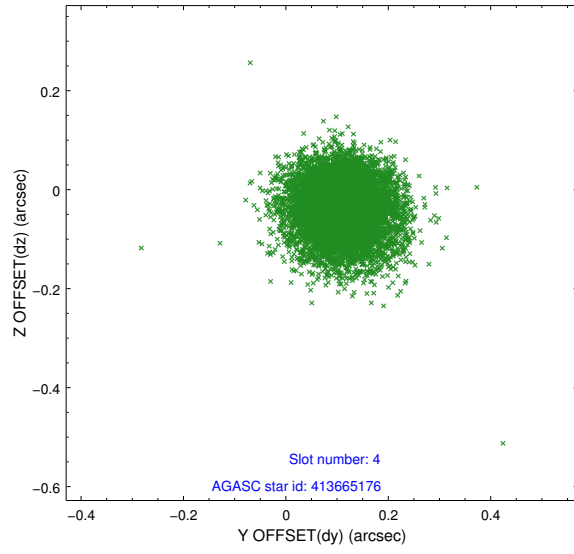
slot	status	id	mag	n_pts	med_dy	med_dz	dr1	dr2	ra	dec	mean_y	mean_z
0	FID	ACIS-I-1	7.24	3529	0.042	-0.025	0.009	0.017	0.000000	0.000000	932.90	-834.89
1	FID	ACIS-I-5	7.23	3529	-0.170	0.055	0.010	0.017	0.000000	0.000000	-1815.21	1062.58
2	FID	ACIS-I-6	7.25	3529	0.037	0.040	0.010	0.016	0.000000	0.000000	398.14	1707.38
3	GUIDE	413537440	7.59	7057	0.046	0.023	0.076	0.131	304.302199	40.591389	-2091.20	1861.59
4	GUIDE	413665176	8.94	7055	0.109	-0.034	0.081	0.130	306.182911	40.093346	2295.00	-1394.63
5	GUIDE	413676032	8.19	7057	-0.091	-0.045	0.059	0.095	305.794948	40.874960	2099.44	1606.21
6	GUIDE	413680112	8.82	7056	0.080	0.075	0.072	0.118	306.015834	40.339755	2113.53	-412.39
7	GUIDE	413549024	7.95	7053	-0.133	-0.018	0.060	0.094	304.639472	39.606765	-2298.64	-1797.13

2.4 Star Slots

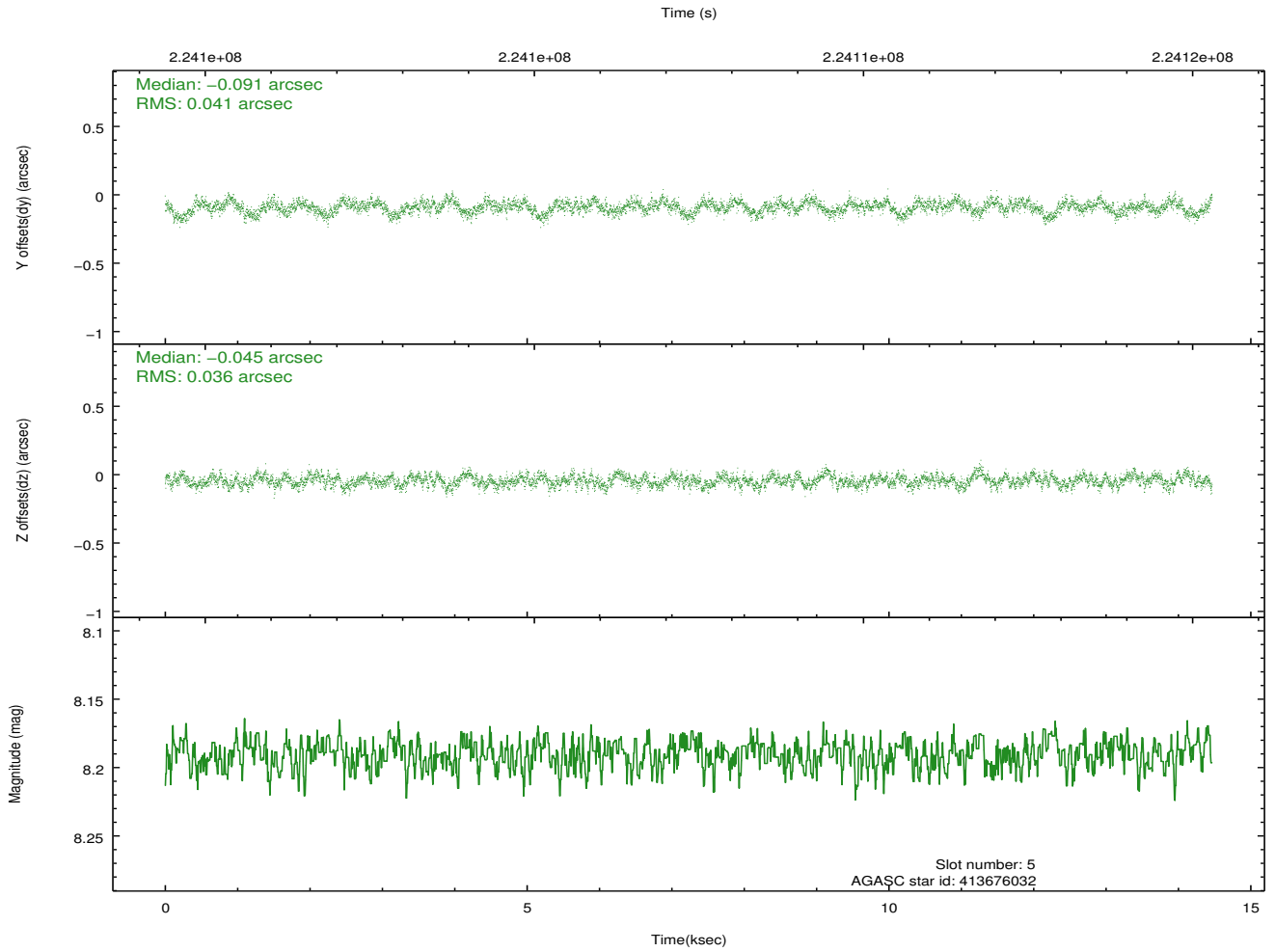
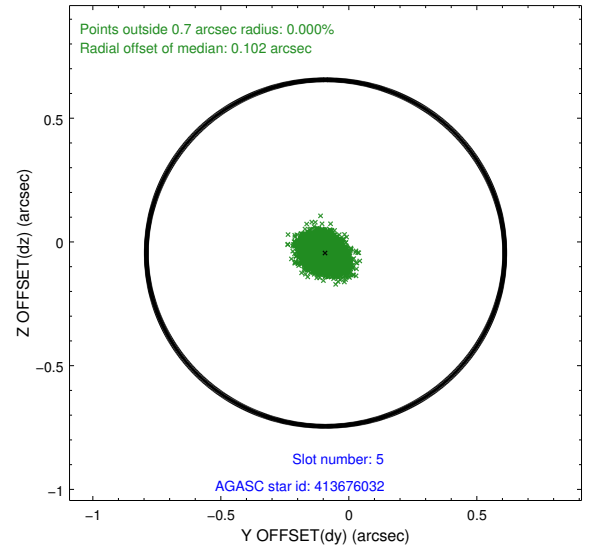
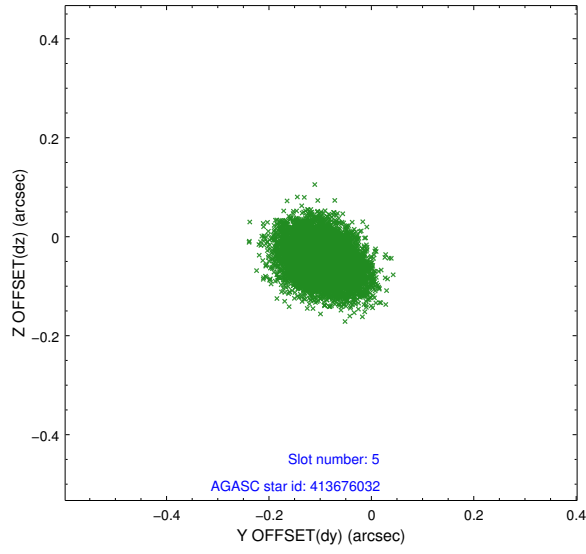
2.4.1 Slot 3



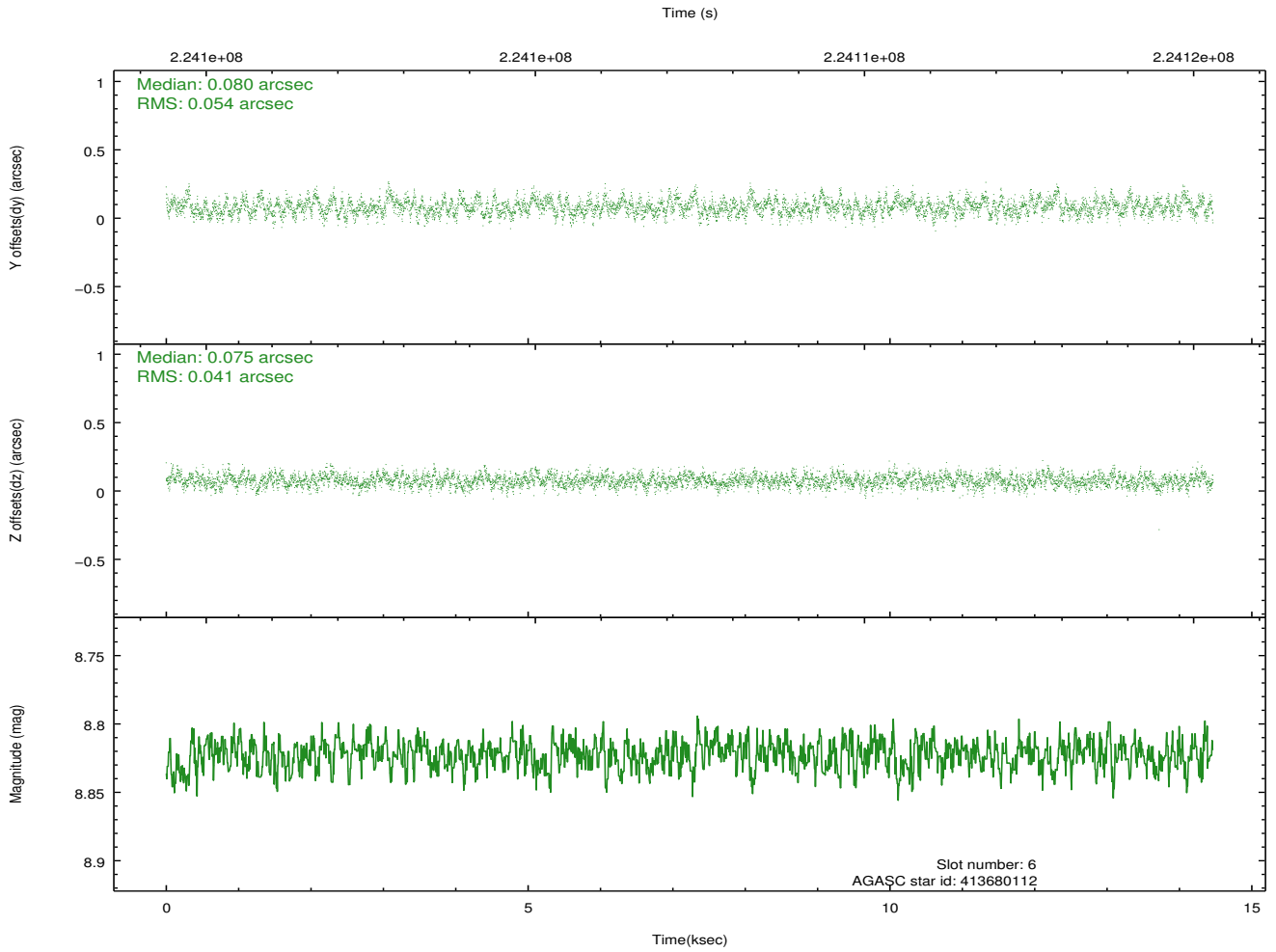
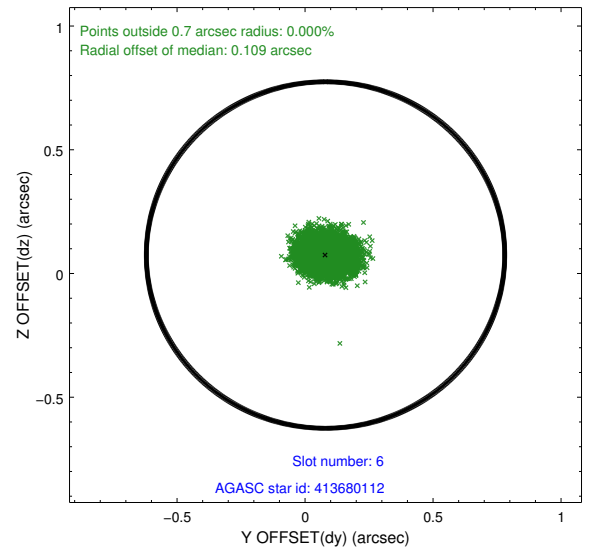
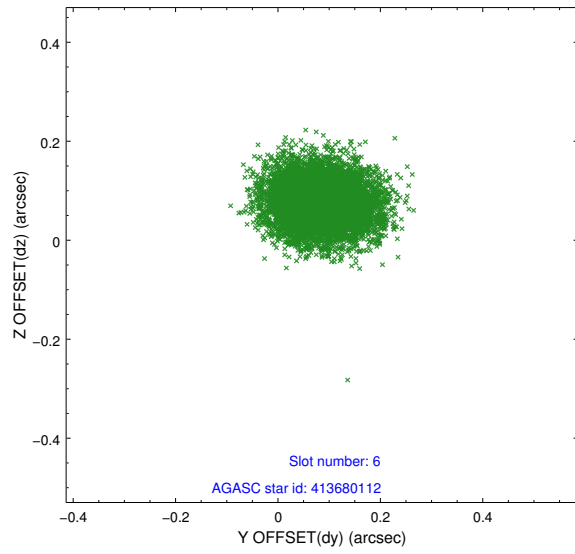
2.4.2 Slot 4



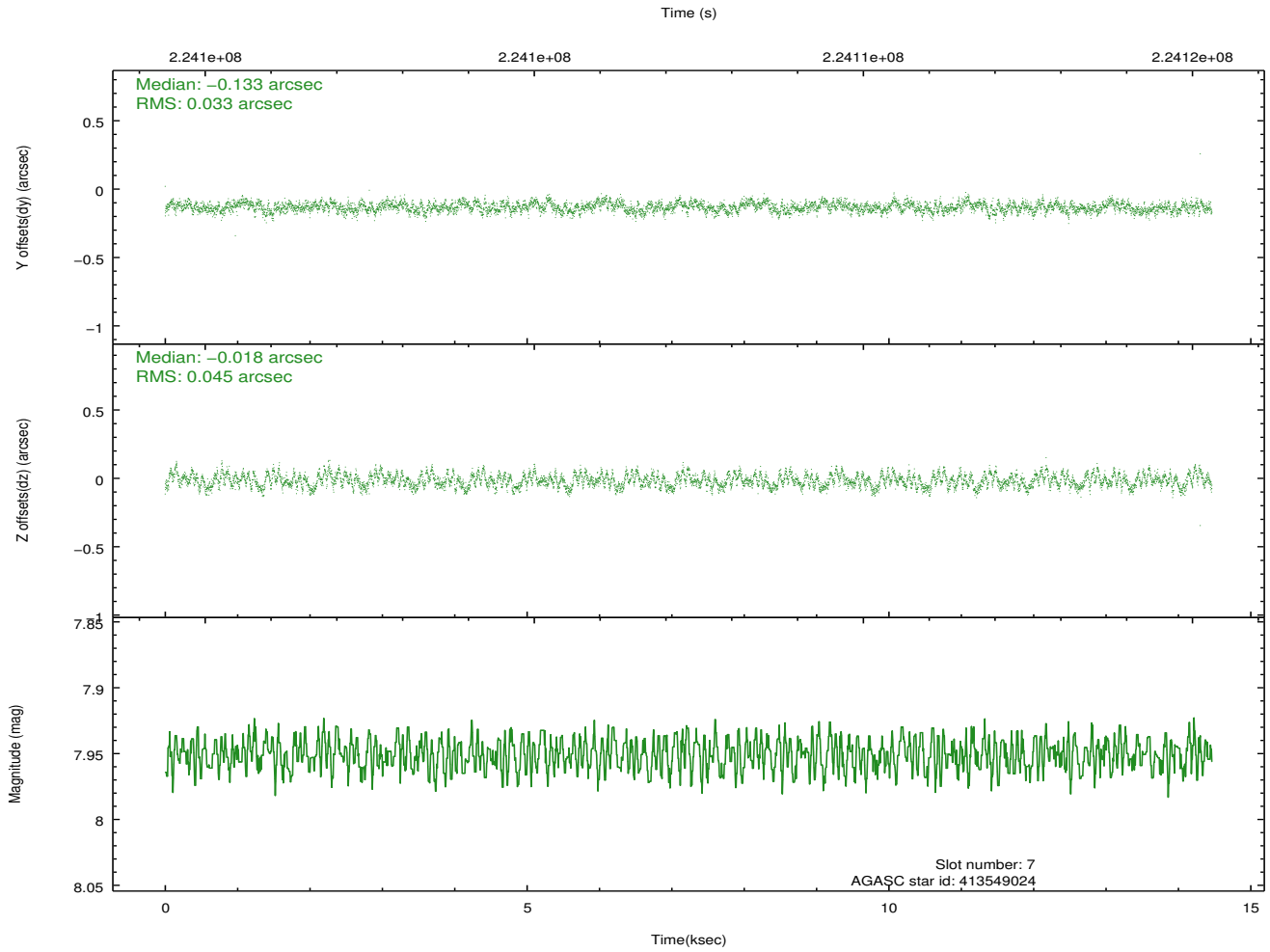
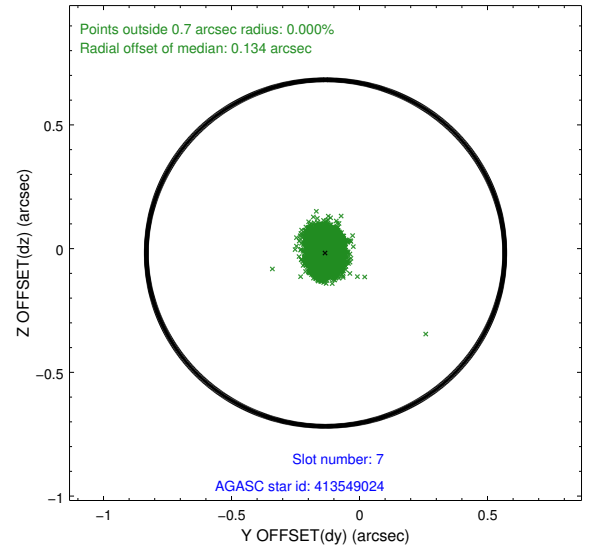
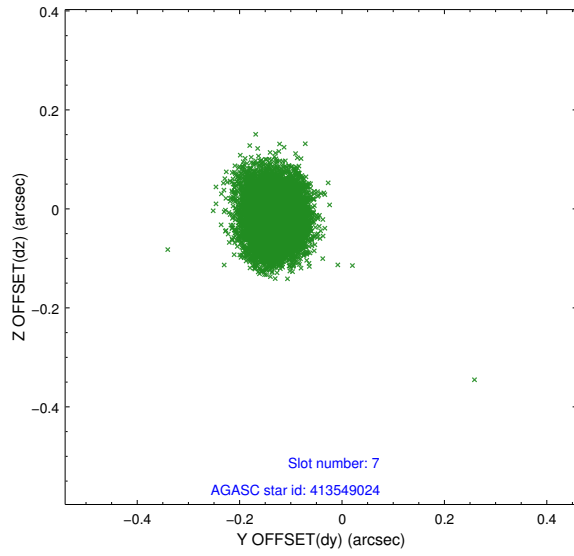
2.4.3 Slot 5



2.4.4 Slot 6

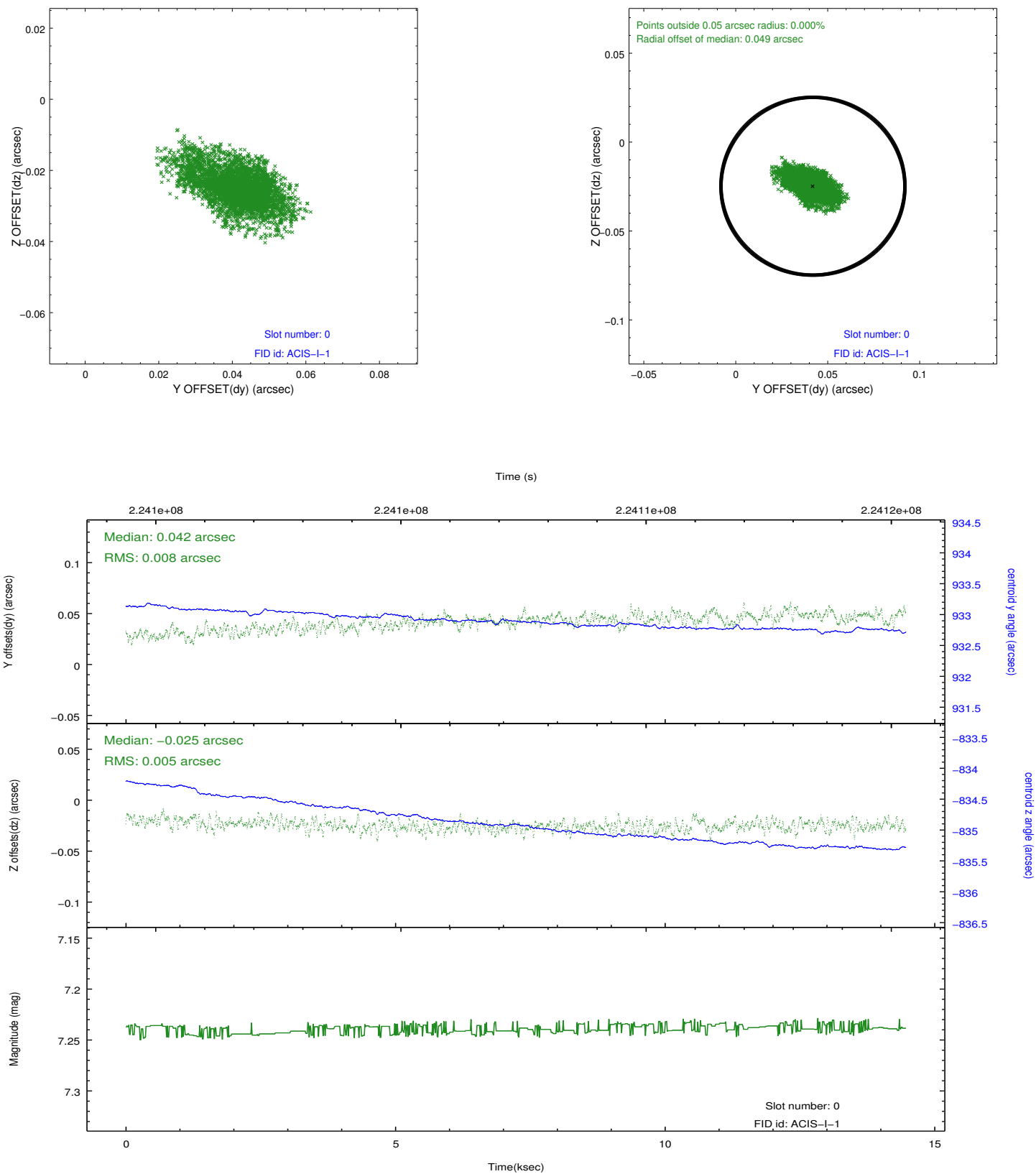


2.4.5 Slot 7

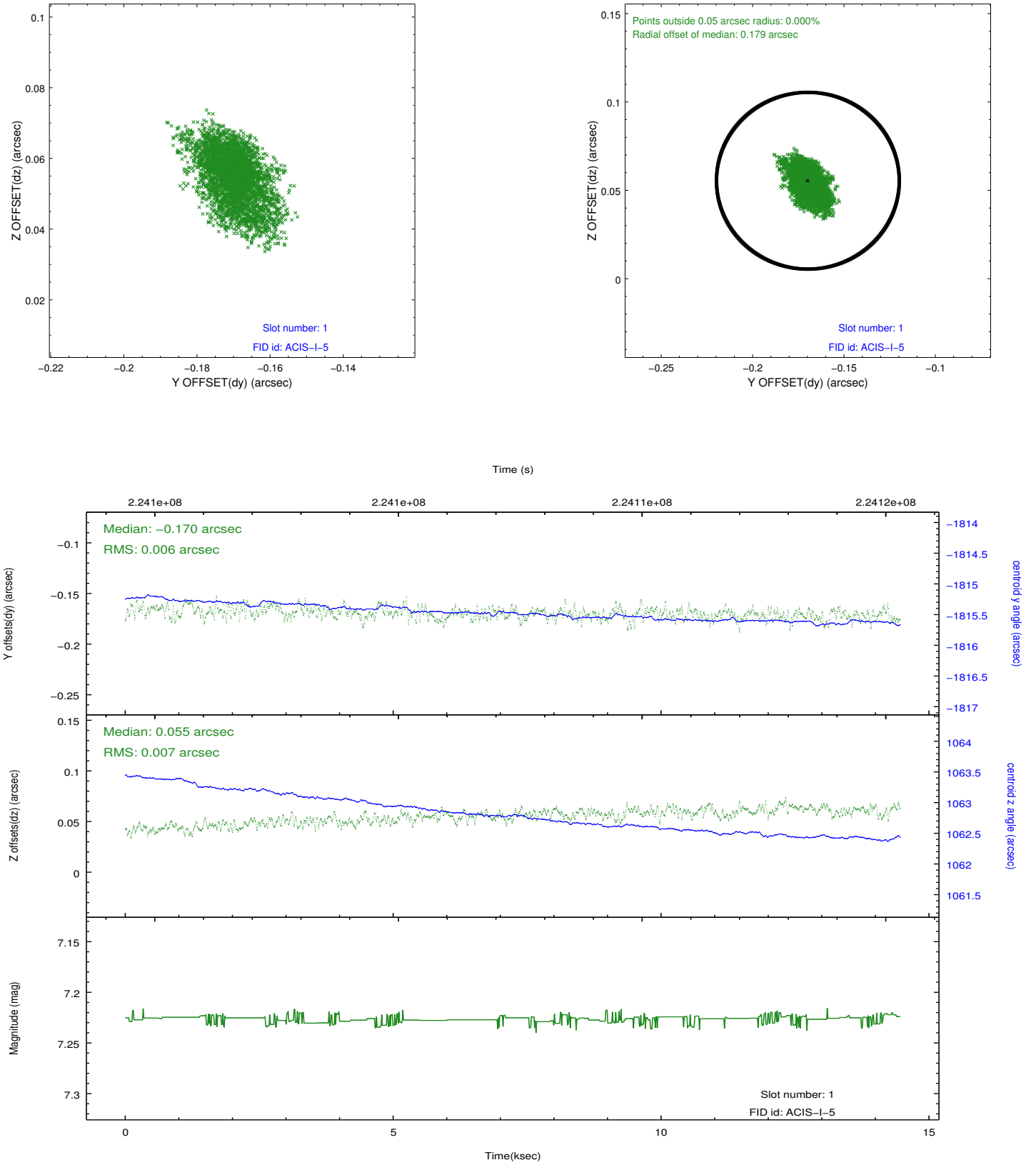


2.5 FID Slots

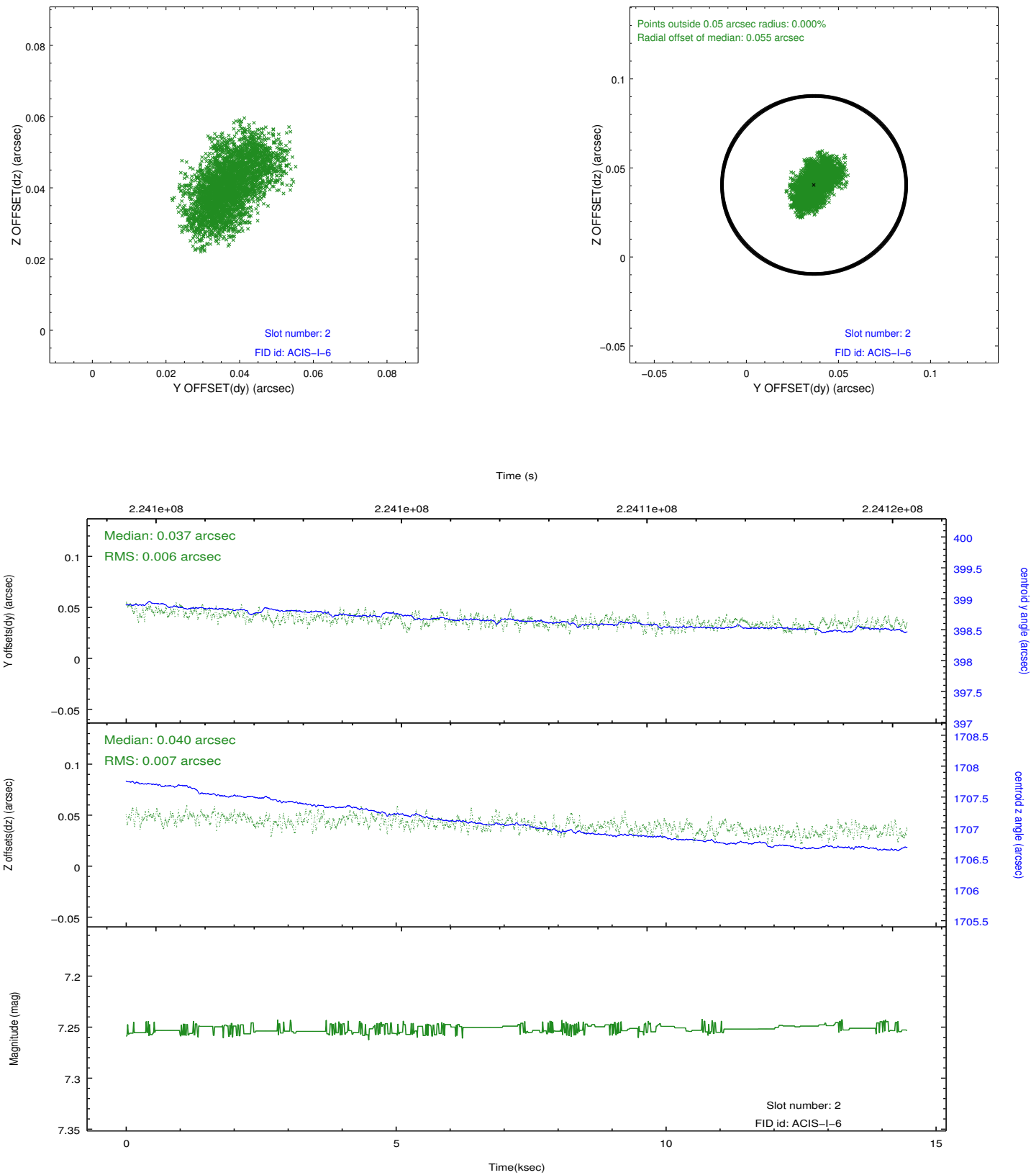
2.5.1 Slot 0



2.5.2 Slot 1



2.5.3 Slot 2



A Summary

A.1 Status

V&V Scientist	Jen Lauer
V&V Date (YYYY-MM-DD)	2013.01.09
V&V Edition	1
V&V Disposition and Status	OK
V&V Charge Time	14.34989

A.2 Comments