

# V&V Reference Report

## L2 ASCDS Version : 8.4.3

Observation 55133 - L2 Version 2  
Chandra X-Ray Center

L2 Processing Date : Feb 24 2012

## Contents

<b>1</b>	<b>Front</b>	<b>2</b>
<b>2</b>	<b>OBI</b>	<b>3</b>
2.1	OBI . . . . .	3
2.1.1	Images . . . . .	3
2.1.2	Bias . . . . .	3
2.1.3	Parameters . . . . .	4
2.1.4	Events . . . . .	4
2.2	Compared Parameters . . . . .	5
2.3	Star Slots . . . . .	6
2.4	FID Slots . . . . .	6
<b>A</b>	<b>Summary</b>	<b>7</b>
A.1	Status . . . . .	7
A.2	Comments . . . . .	7

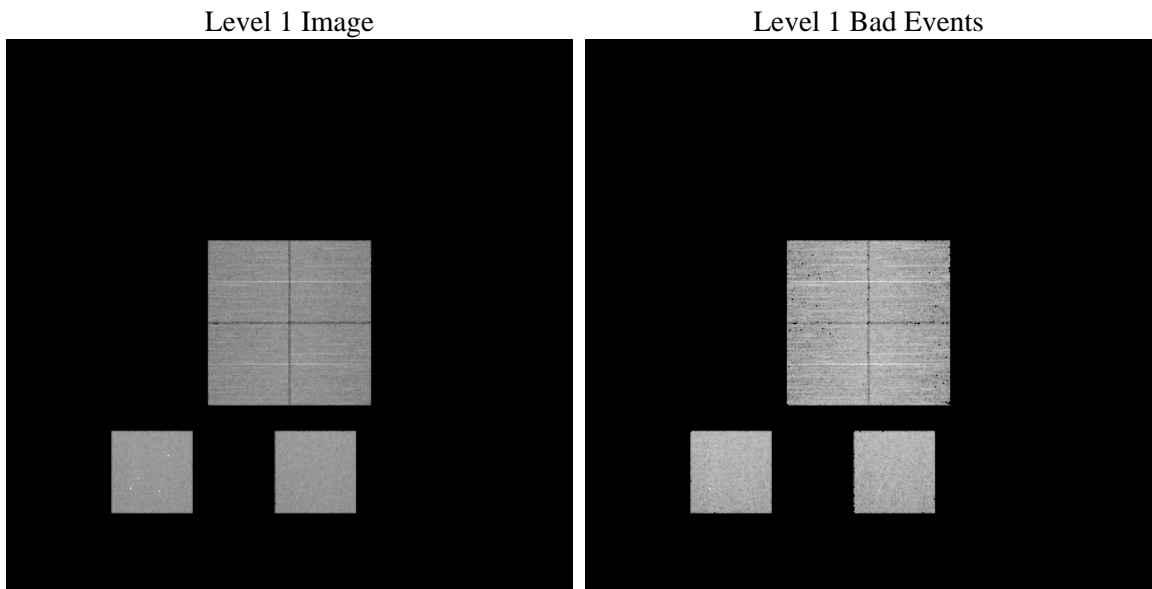
# 1 Front

seq_num	&#160	Sequence number
obs_id	55133	Observation id
title	ACIS-012357 diagnostics	Proposal title
observer	CHANDRA engineering request/realtime commanding	Principal investig
object	&#160	Source name
dtcycle	0	&#160
cycle	P	events from which exps? Prim/Second/Both
ra_targ	0.0	Observer's specified target RA [deg]
dec_targ	0.0	Observer's specified target Dec [deg]
ra_nom	350.02211415706	Nominal RA [deg]
dec_nom	-14.010653174307	Nominal Dec [deg]
roll_nom	308.29515767276	Nominal Roll [deg]
revision	2	Processing version of data
ontime	8287.9999691844	Sum of GTIs [s]
livetime	8183.0523231401	Livetime [s]
ontime0	8287.9999691844	Sum of GTIs [s]
ontime1	8287.9999691844	Sum of GTIs [s]
ontime2	8287.9999691844	Sum of GTIs [s]
ontime3	8287.9999691844	Sum of GTIs [s]
ontime5	8287.9999691844	Sum of GTIs [s]
ontime7	8287.9999691844	Sum of GTIs [s]
l2events	317393	Number of level 2 events

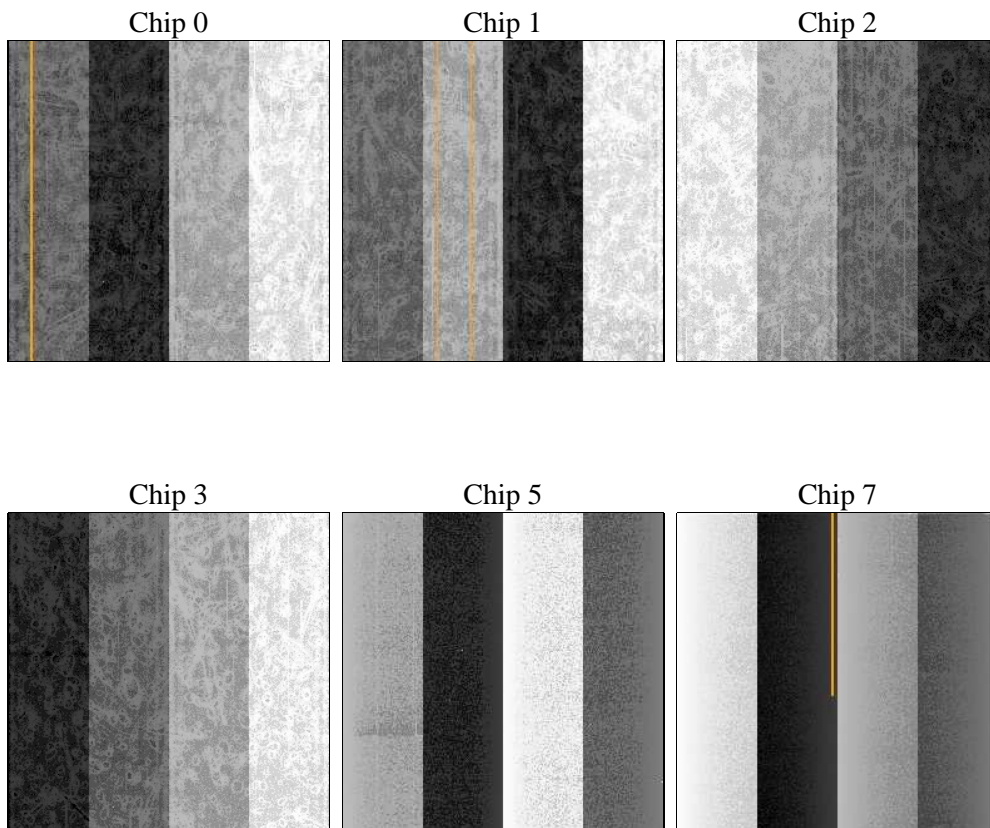
## 2 OBI

### 2.1 OBI

#### 2.1.1 Images



#### 2.1.2 Bias



### 2.1.3 Parameters

obi_num	0	Obi number	sched_exp_time	0.0	[s] Scheduled observation exposure time
ascdsver	8.4.3	Processing system revision	ontime	8287.9999691844	Sum of GTIs [s]
caldsver	4.4.8	&#160	ontime0	8287.9999691844	Sum of GTIs [s]
date	2012-02-24T07:55:39	Date and time of file creation	ontime1	8287.9999691844	Sum of GTIs [s]
revision	2	Processing version of data	ontime2	8287.9999691844	Sum of GTIs [s]
			ontime3	8287.9999691844	Sum of GTIs [s]
			ontime5	8287.9999691844	Sum of GTIs [s]
			ontime7	8287.9999691844	Sum of GTIs [s]
			l1events	643589	Number of level 1 events

### 2.1.4 Events

	ccd 0	ccd 1	ccd 2	ccd 3	ccd 5	ccd 7		ccd 0	ccd 1	ccd 2	ccd 3	ccd 5	ccd 7
level 1 events	93981	93334	95541	98156	134317	128260	grade 0 events	24039	23687	24745	24988	11489	12737
rejected events	48225	47294	49426	51801	56259	54735		25%	25%	25%	25%	8%	9%
rejected %	51%	50%	51%	52%	41%	42%	grade 1 events	121	117	146	175	165	91
								0%	0%	0%	0%	0%	0%
							grade 2 events	8428	8783	8170	8158	27552	15781
								8%	9%	8%	8%	20%	12%
							grade 3 events	3116	3088	3116	3170	3225	6674
								3%	3%	3%	3%	2%	5%
							grade 4 events	3111	3053	3143	3275	3240	6691
								3%	3%	3%	3%	2%	5%
							grade 5 events	3170	3203	3093	3536	7461	8794
								3%	3%	3%	3%	5%	6%
							grade 6 events	7062	7429	6941	6764	32552	31642
								7%	7%	7%	6%	24%	24%
							grade 7 events	44934	43974	46187	48090	48633	45850
								47%	47%	48%	48%	36%	35%

## 2.2 Compared Parameters

Parameter	Planned	Actual	Parameter	Planned	Actual
Instrument	ACIS	ACIS	Obspar format version number	7	7
Detector	ACIS-012357	ACIS-012357	Obspar file type	PREDICTED	ACTUAL
Grating	NONE	NONE	Obspar update status	NONE	UPDATED
Data mode	FAINT	FAINT	Number of optional ACIS chips dropped	0	0
Observation mode	SECONDARY	SECONDARY	On-chip summing requested	N	N
[deg] Pointing RA	0	350.0221141570563	Subarray requested	NONE	NONE
[deg] Pointing Dec	0	-14.01065317430674	Alternating exposures requested	N	N
[deg] Pointing Roll	0.0	308.2951576727603	[s] Primary exposure time	3.2	3.2
[mm] SIM focus pos	-1.429586	-1.428180813131781			
[mm] SIM defocus	0.1037507710433287	0.1051558262725154			
[mm] SIM translation stage pos	250.455976	250.466033080201			
[mm] SIM translation stage offset	0	-0.01005468664627074			
[s] Observation start time (MET)	434542775.203171	434542774.17818			
Observation start date	2011-10-09T10:19:35	2011-10-09T10:19:34			
[s] Observation end time (MET)	434560544.604104	434560543.57911			
Observation end date	2011-10-09T15:15:45	2011-10-09T15:15:43			
Read mode	TIMED	TIMED			

## 2.3 Star Slots

## 2.4 FID Slots

## **A Summary**

### **A.1 Status**

V&V Scientist	Jen Lauer
V&V Date (YYYY-MM-DD)	2012.02.24
V&V Edition	1
V&V Disposition and Status	OK
V&V Charge Time	8.2879999691844

### **A.2 Comments**