

V&V Reference Report

L2 ASCDS Version : 7.6.7.1

Observation 5473 - L2 Version 002
Chandra X-Ray Center

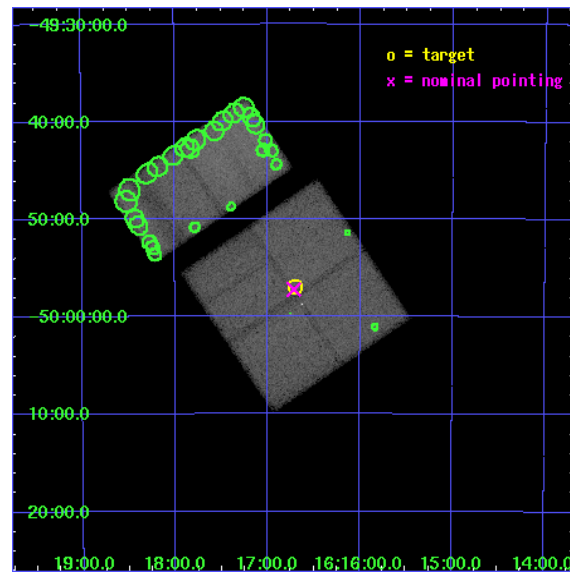
L2 Processing Date : Mar 10 2006

Contents

1	Front	2
2	OBI	3
2.1	OBI	3
2.1.1	Images	3
2.1.2	Bias	3
2.1.3	Parameters	4
2.1.4	Events	4
2.2	Compared Parameters	5
2.3	Aspect	6
2.4	Star Slots	9
2.4.1	Slot 3	9
2.4.2	Slot 4	10
2.4.3	Slot 5	11
2.4.4	Slot 6	12
2.4.5	Slot 7	13
2.5	FID Slots	14
2.5.1	Slot 0	14
2.5.2	Slot 1	15
2.5.3	Slot 2	16
3	Point Sources	17
A	Summary	18
A.1	Status	18
A.2	Comments	18

1 Front

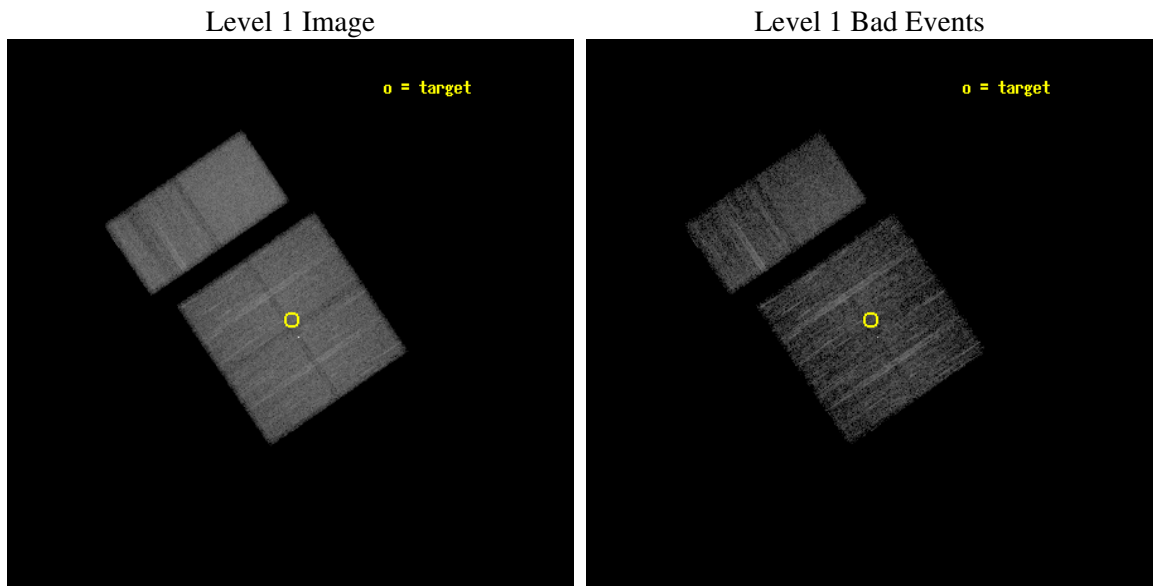
seq_num	400403
obs_id	5473
title	Localization of INTEGRAL-Selected Sources in the Norma Region
observer	Dr. John Tomsick
object	IGR J16167-4957
dtcycle	0
cycle	P
ra_targ	244.175
dec_targ	-49.95
ra_nom	244.1787360258
dec_nom	-49.953882810302
roll_nom	325.85077136476
revision	2
ontime	5043.1999812126
livetime	4979.3399464
ontime0	5043.1999812126
ontime1	5043.1999812126
ontime2	5039.9590109289
ontime3	5043.1999812126
ontime6	5043.1999812126
ontime7	5043.1999812126
l2events	278638



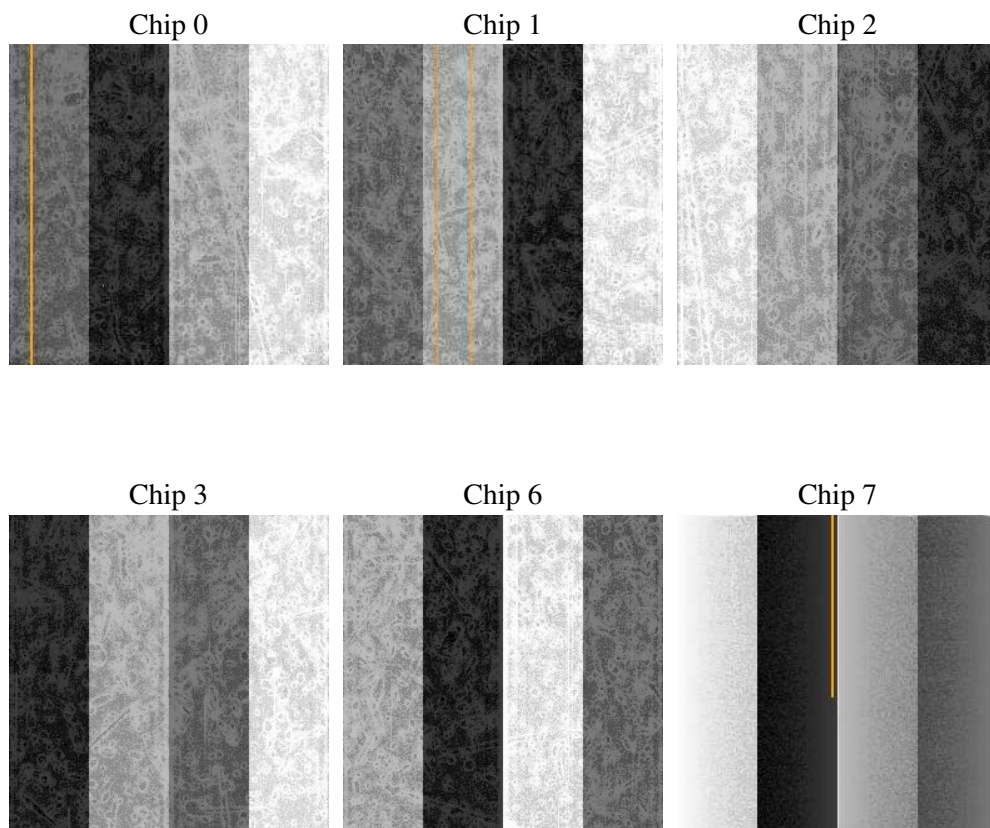
2 OBI

2.1 OBI

2.1.1 Images



2.1.2 Bias



2.1.3 Parameters

obi_num	0
ascdsver	7.6.7.1
caldsver	3.2.1
date	2006-03-10T12:53:08
revision	2

sched_exp_time	5039.250000
ontime	5049.4869706631
ontime0	5049.4869906008
ontime1	5049.4869706631
ontime2	5046.2460003793
ontime3	5049.4869706631
ontime6	5049.4869706631
ontime7	5049.4869906008
l1events	511214

2.1.4 Events

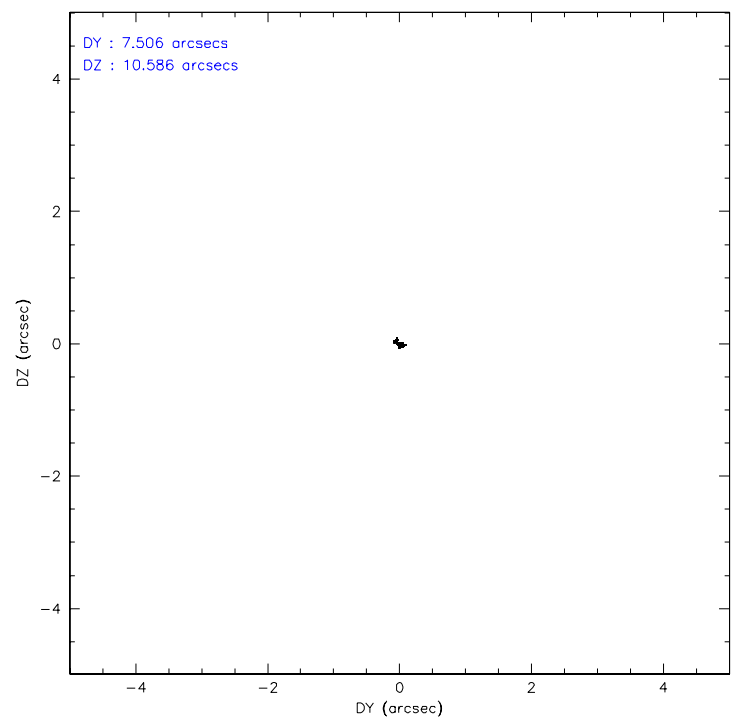
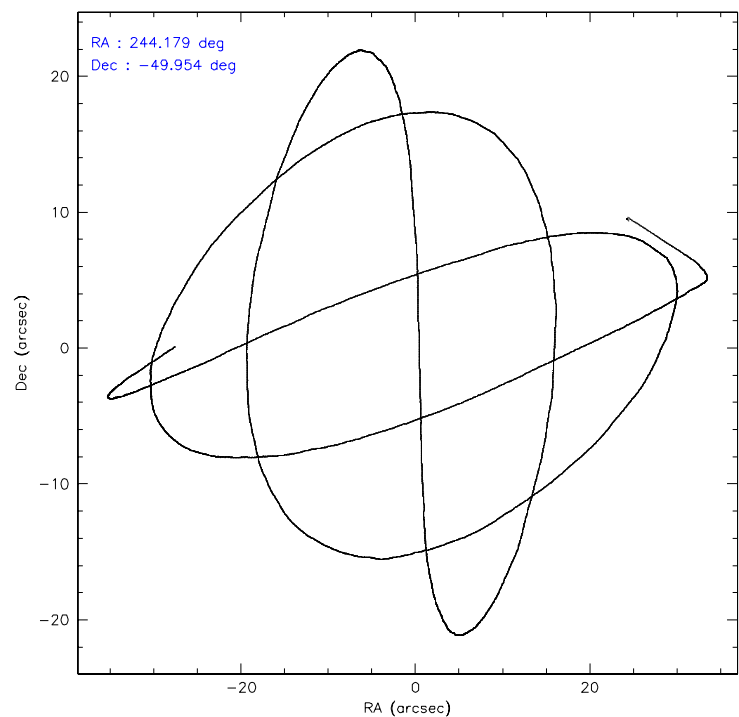
	ccd 0	ccd 1	ccd 2	ccd 3	ccd 6	ccd 7
level 1 events	78948	81108	81447	80642	84199	104870
rejected events	32538	33804	36686	34373	37815	41777
rejected %	41%	41%	45%	42%	44%	39%

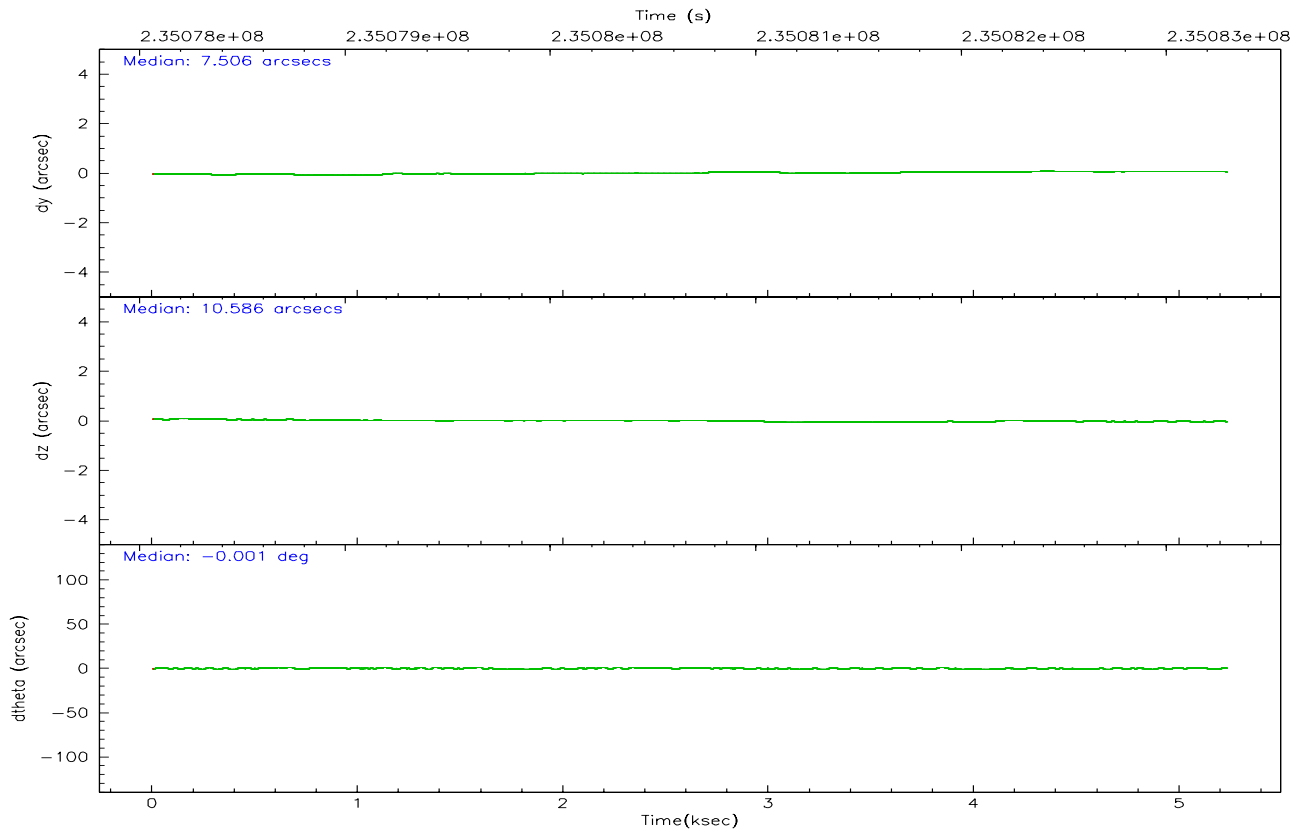
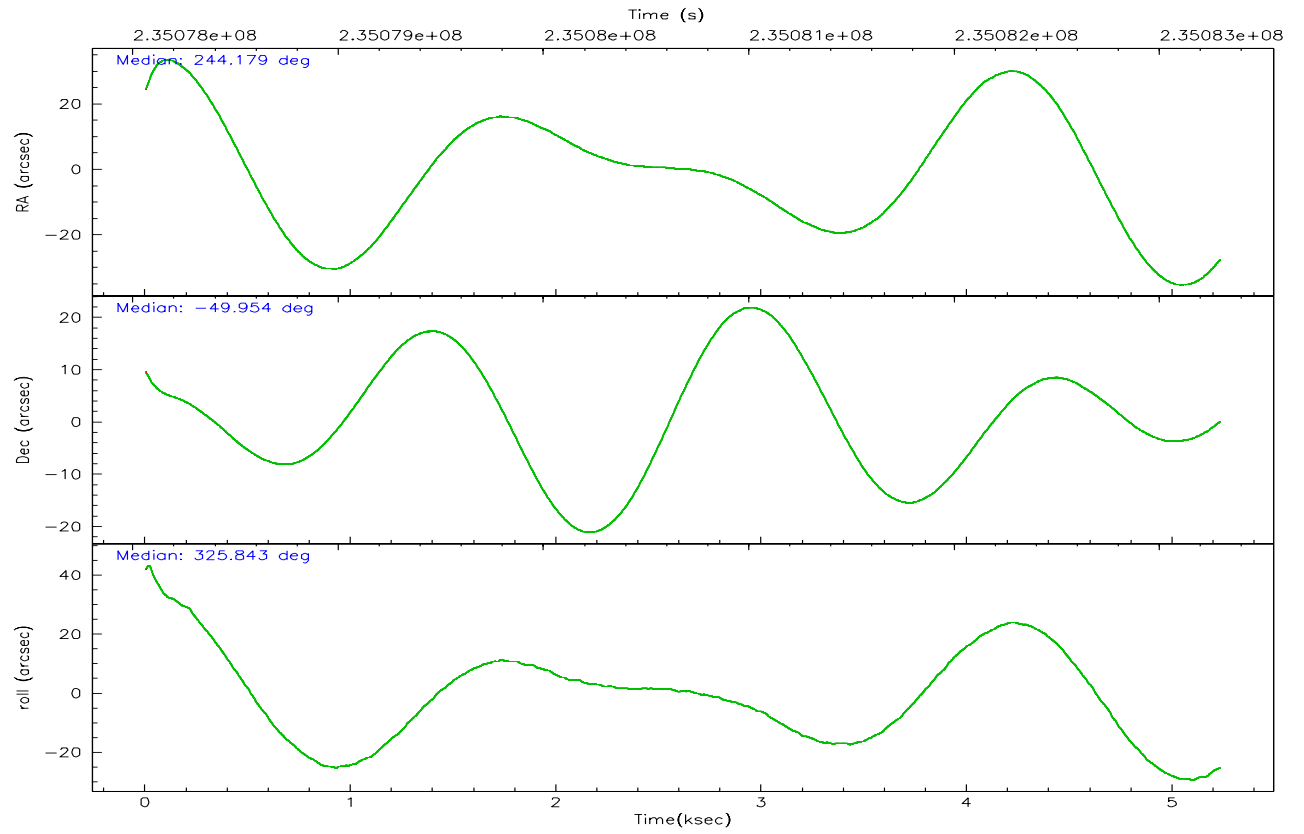
	ccd 0	ccd 1	ccd 2	ccd 3	ccd 6	ccd 7
grade 0 events	32384	31099	32145	32621	31123	4934
	41%	38%	39%	40%	36%	4%
grade 1 events	229	201	221	195	167	53
	0%	0%	0%	0%	0%	0%
grade 2 events	5817	7458	4923	5434	6413	13836
	7%	9%	6%	6%	7%	13%
grade 3 events	2168	2142	1972	2051	1984	2692
	2%	2%	2%	2%	2%	2%
grade 4 events	1961	2083	1925	2107	2005	2749
	2%	2%	2%	2%	2%	2%
grade 5 events	1780	1899	1638	1902	1991	3749
	2%	2%	2%	2%	2%	3%
grade 6 events	4151	4592	3859	4118	4917	38967
	5%	5%	4%	5%	5%	37%
grade 7 events	30458	31634	34764	32214	35599	37890
	38%	39%	42%	39%	42%	36%

2.2 Compared Parameters

Parameter	Planned	Actual	Parameter	Planned	Actual
Instrument	ACIS	ACIS	Obspar format version number	6	6
Detector	ACIS-012367	ACIS-012367	Obspar file type	PREDICTED	ACTUAL
Grating	NONE	NONE	Obspar update status	NONE	UPDATED
Data mode	FAINT	FAINT	On-chip summing requested	N	N
Observation mode	POINTING	POINTING	Subarray requested	NONE	NONE
Pointing RA	244.136460	244.1787360258034	Alternating exposures requested	N	N
Pointing Dec	-49.952019	-49.95388281030186	Primary exposure time	0.000000	3.2
Pointing Roll	325.609668	325.8507713647621			
SIM focus pos (mm)	-0.782348	-0.7809083437167272			
SIM defocus (mm)	0	0.001439871863259334			
SIM translation stage pos (mm)	-233.592463	-233.5874344608287			
SIM translation stage offset (mm)	0	-0.005018542100998502			
Observation start time	235078260.184000	235077276.5791			
Observation start date	2005-06-13T19:29:56	2005-06-13T19:14:36			
Observation end time	235083299.184000	235083531.64188			
Observation end date	2005-06-13T20:53:55	2005-06-13T20:58:51			
Read mode	TIMED	TIMED			

2.3 Aspect



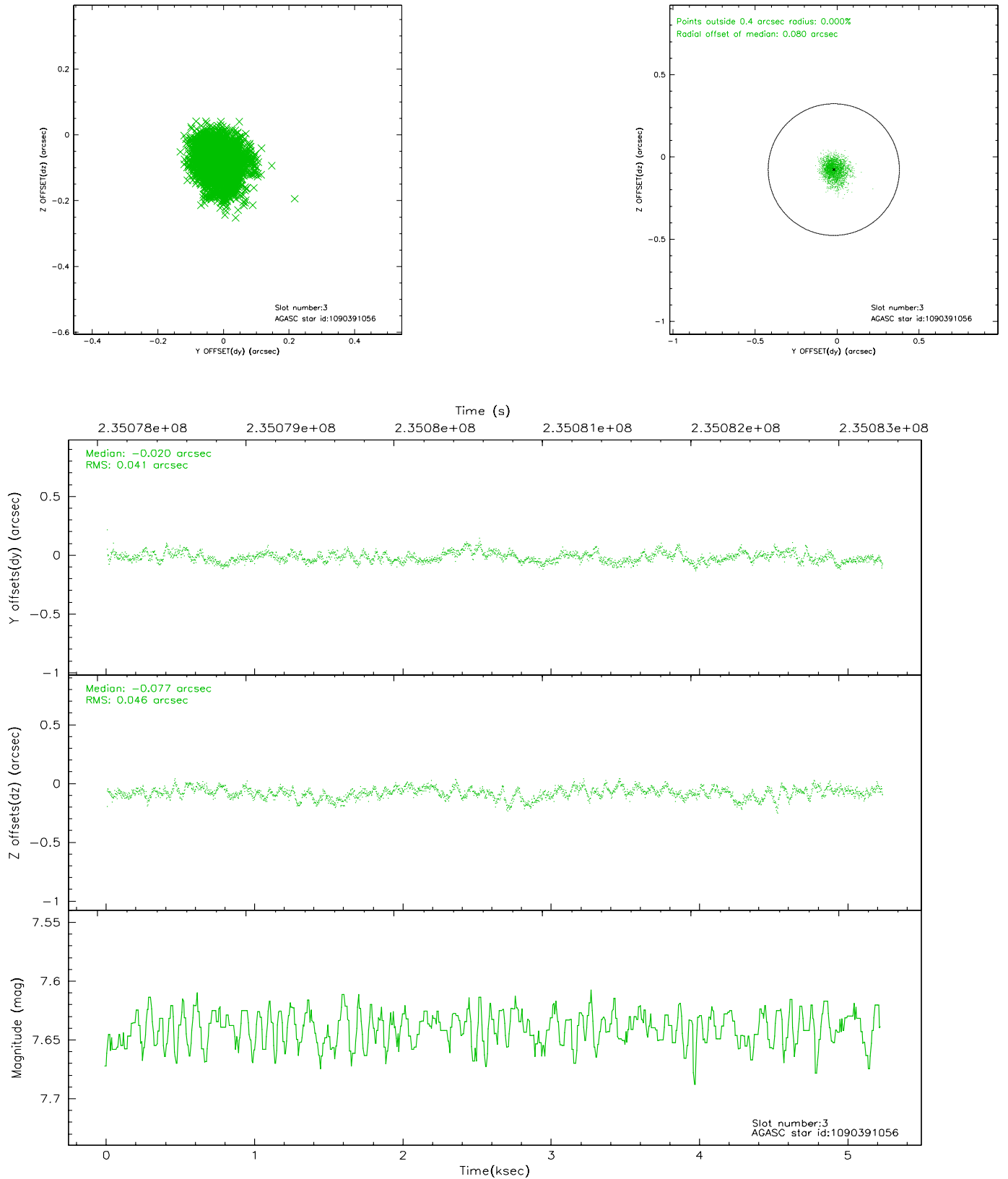


Slot Statistics

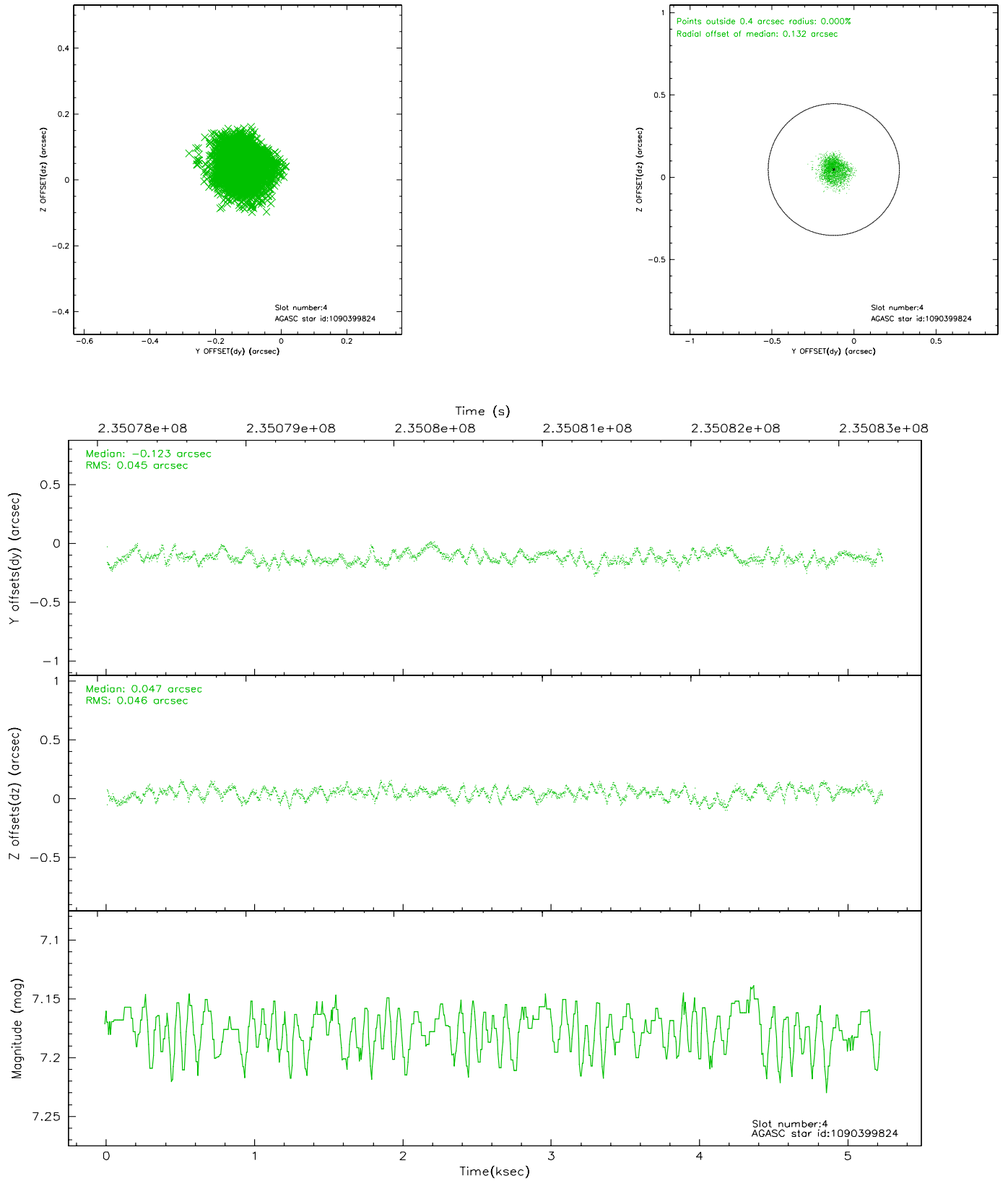
slot	status	id	mag	n_pts	med_dy	med_dz	dr1	dr2	ra	dec	mean_y	mean_z
0	FID	ACIS-I-1	7.24	1276	0.006	0.015	0.006	0.010	0.000000	0.000000	932.16	-834.06
1	FID	ACIS-I-5	7.23	1276	-0.144	0.031	0.006	0.010	0.000000	0.000000	-1815.44	1062.89
2	FID	ACIS-I-6	7.25	1276	0.047	0.025	0.006	0.011	0.000000	0.000000	396.51	1708.68
3	GUIDE	1090391056	7.64	2552	-0.020	-0.077	0.065	0.107	244.221245	-49.856754	-30.66	394.08
4	GUIDE	1090399824	7.18	2552	-0.123	0.047	0.070	0.108	243.299366	-49.884703	-1732.42	-905.62
5	GUIDE	1090525496	8.63	2550	0.142	-0.067	0.069	0.107	244.777039	-50.152945	1631.55	232.57
6	GUIDE	1090921280	9.10	2550	0.006	0.153	0.079	0.126	244.365071	-50.638328	1828.28	-1743.93
7	GUIDE	1090393552	8.06	2551	-0.007	-0.050	0.081	0.129	244.664084	-49.413876	-70.98	2292.67

2.4 Star Slots

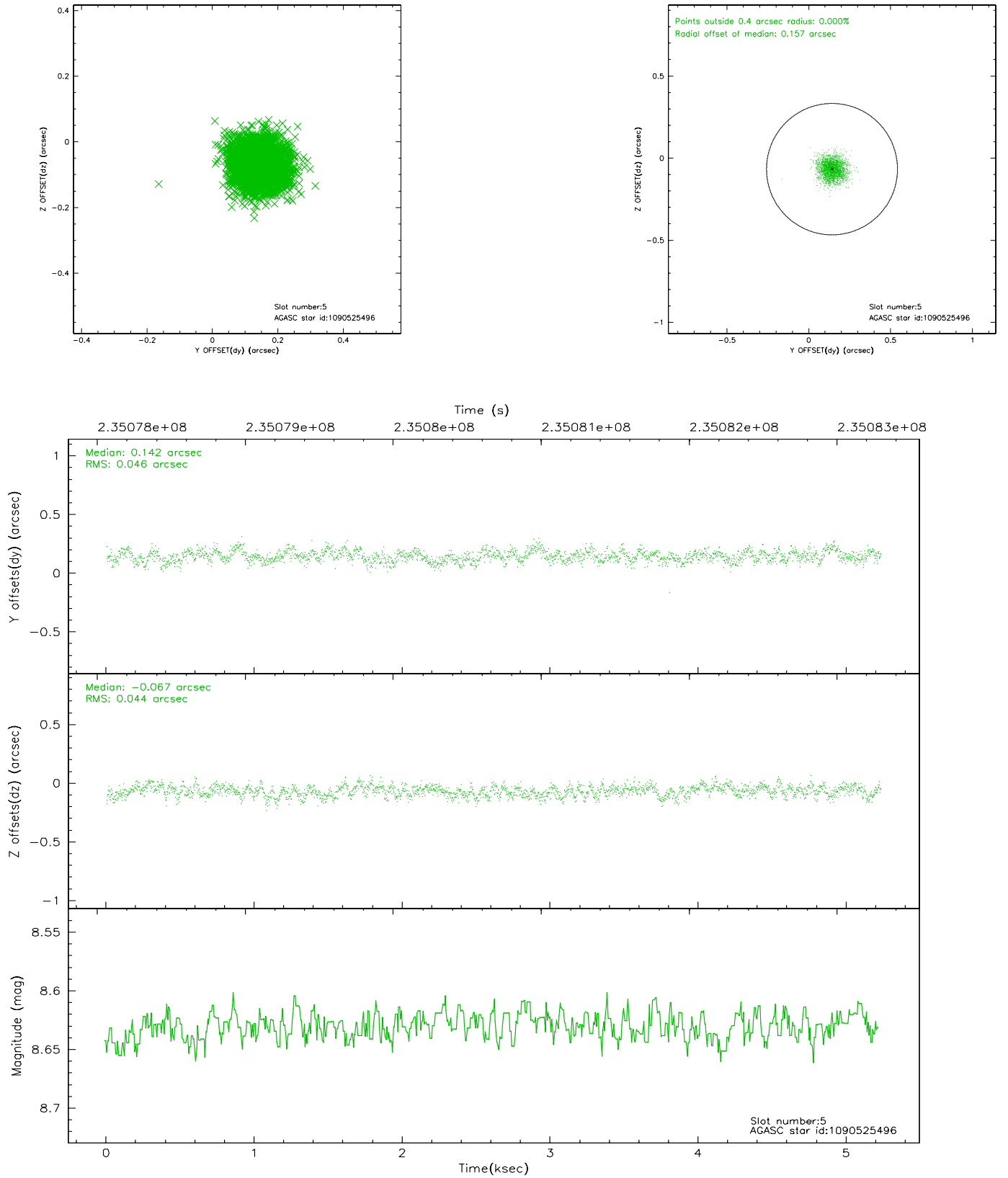
2.4.1 Slot 3



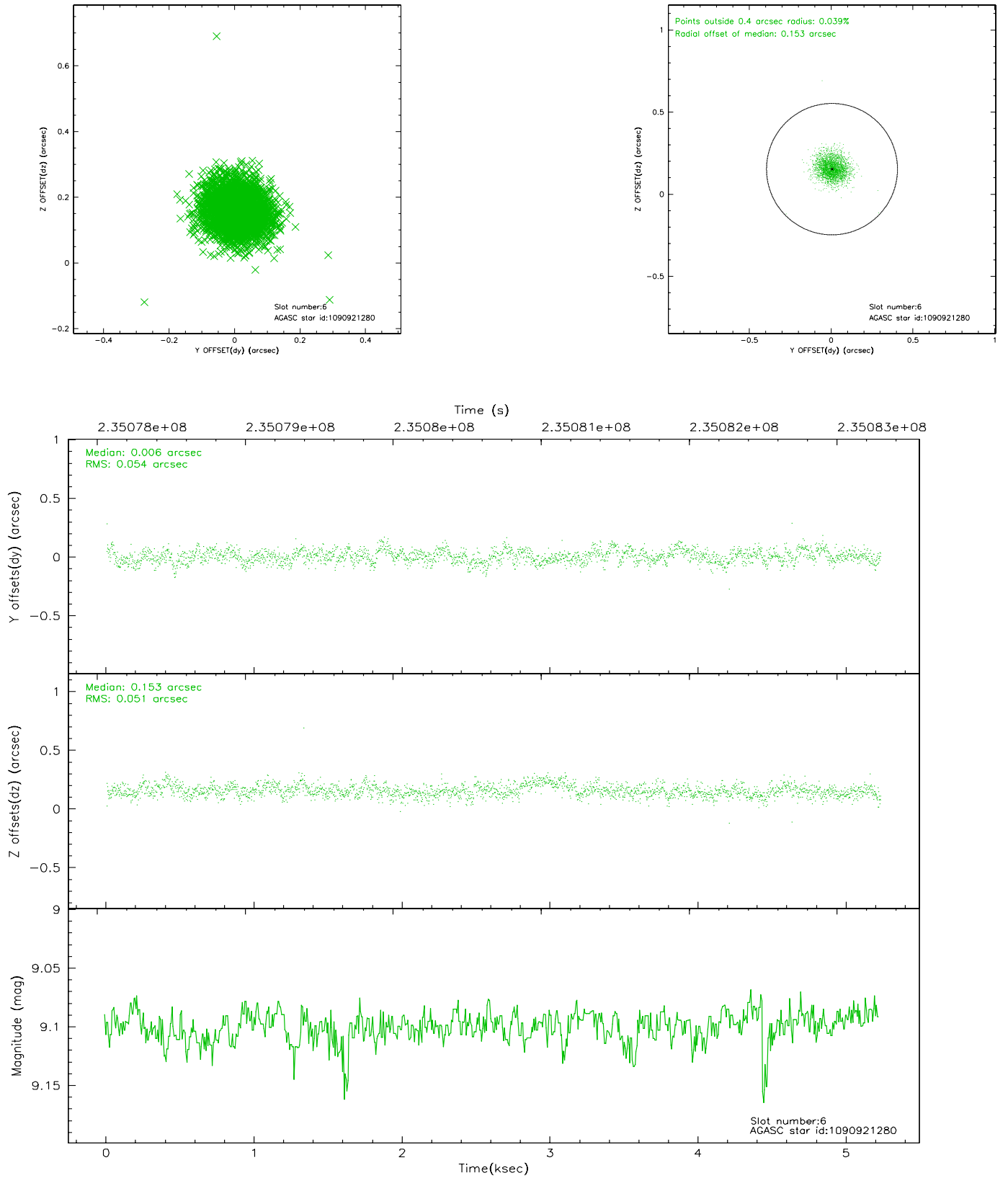
2.4.2 Slot 4



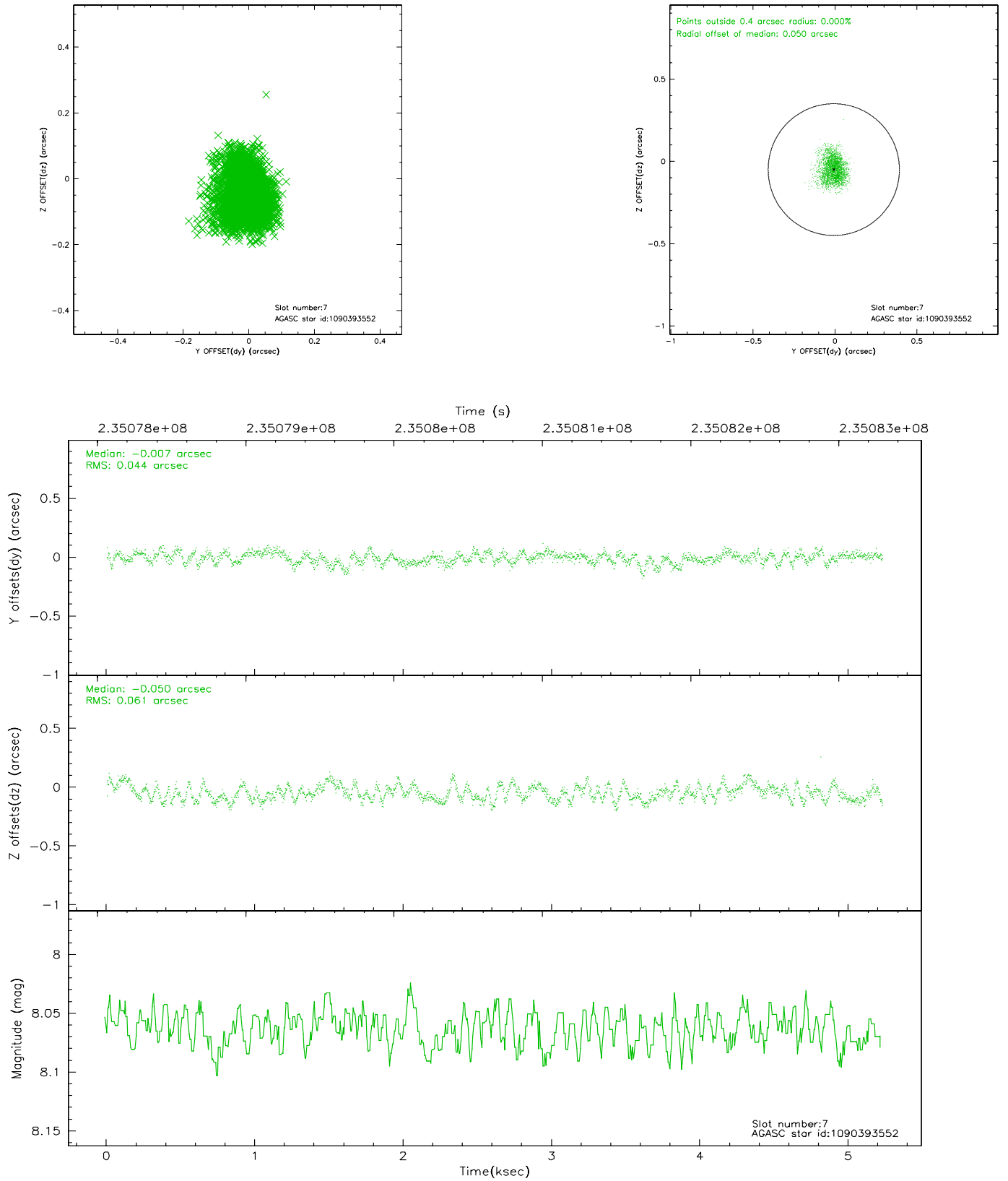
2.4.3 Slot 5



2.4.4 Slot 6

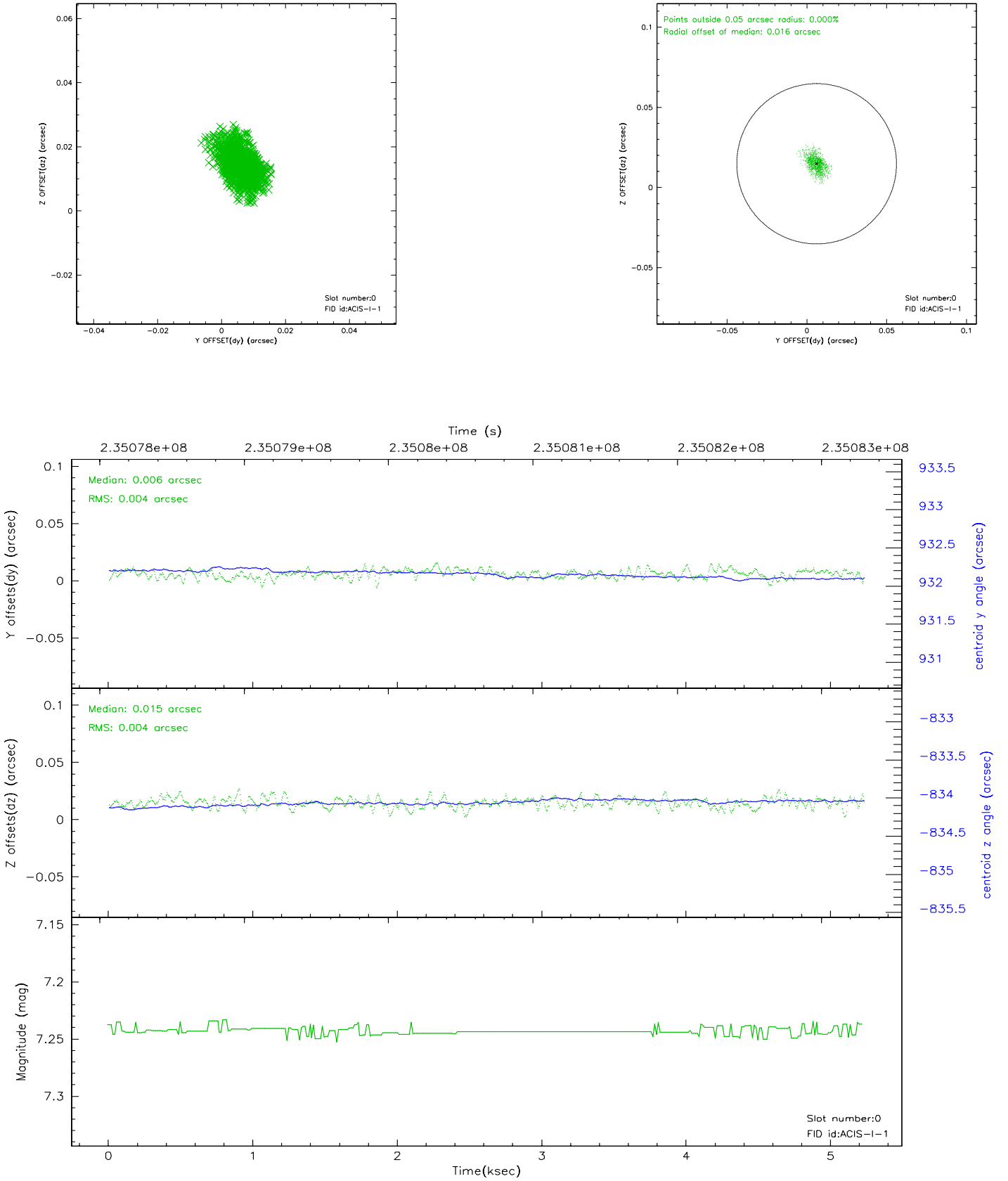


2.4.5 Slot 7

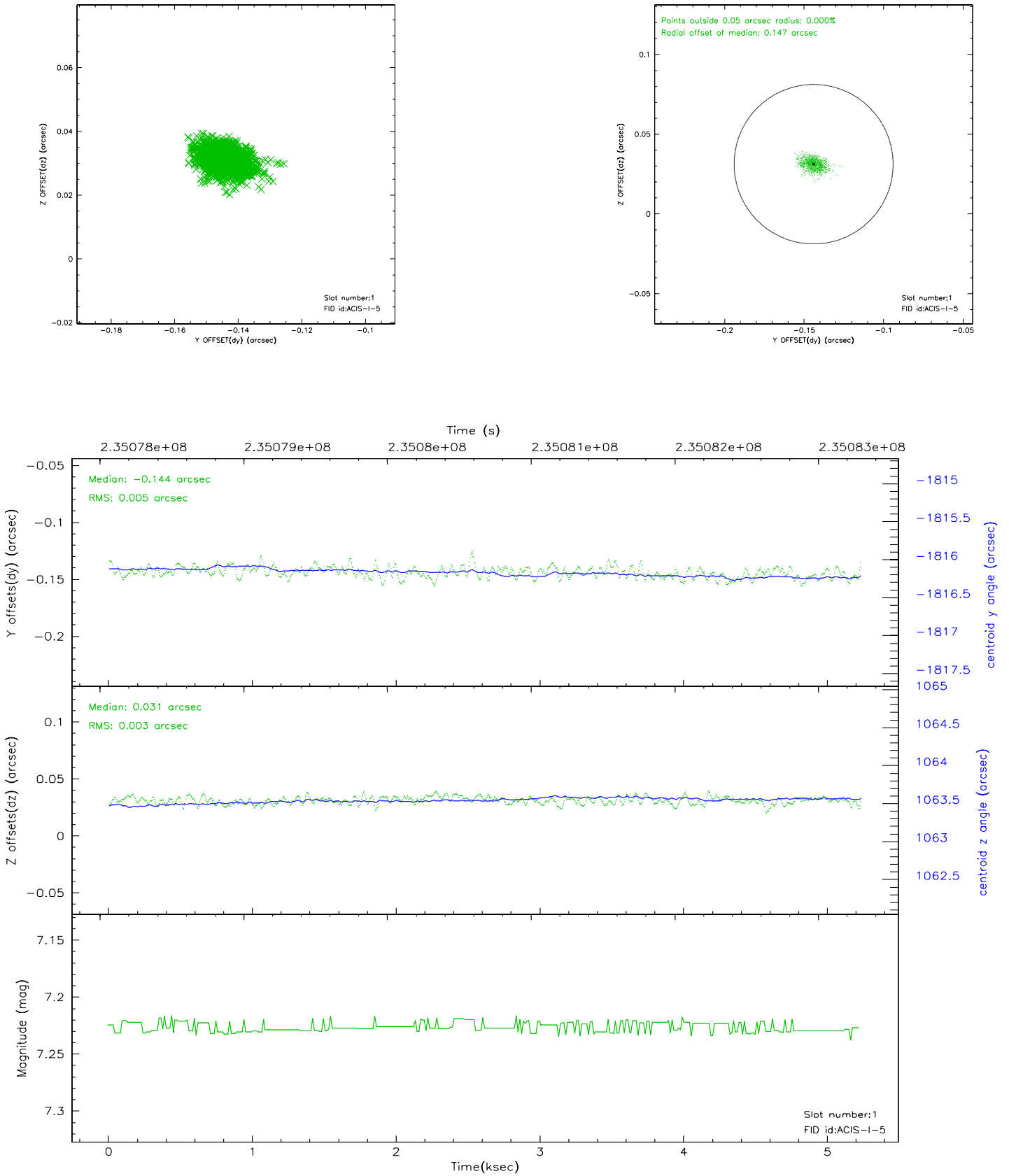


2.5 FID Slots

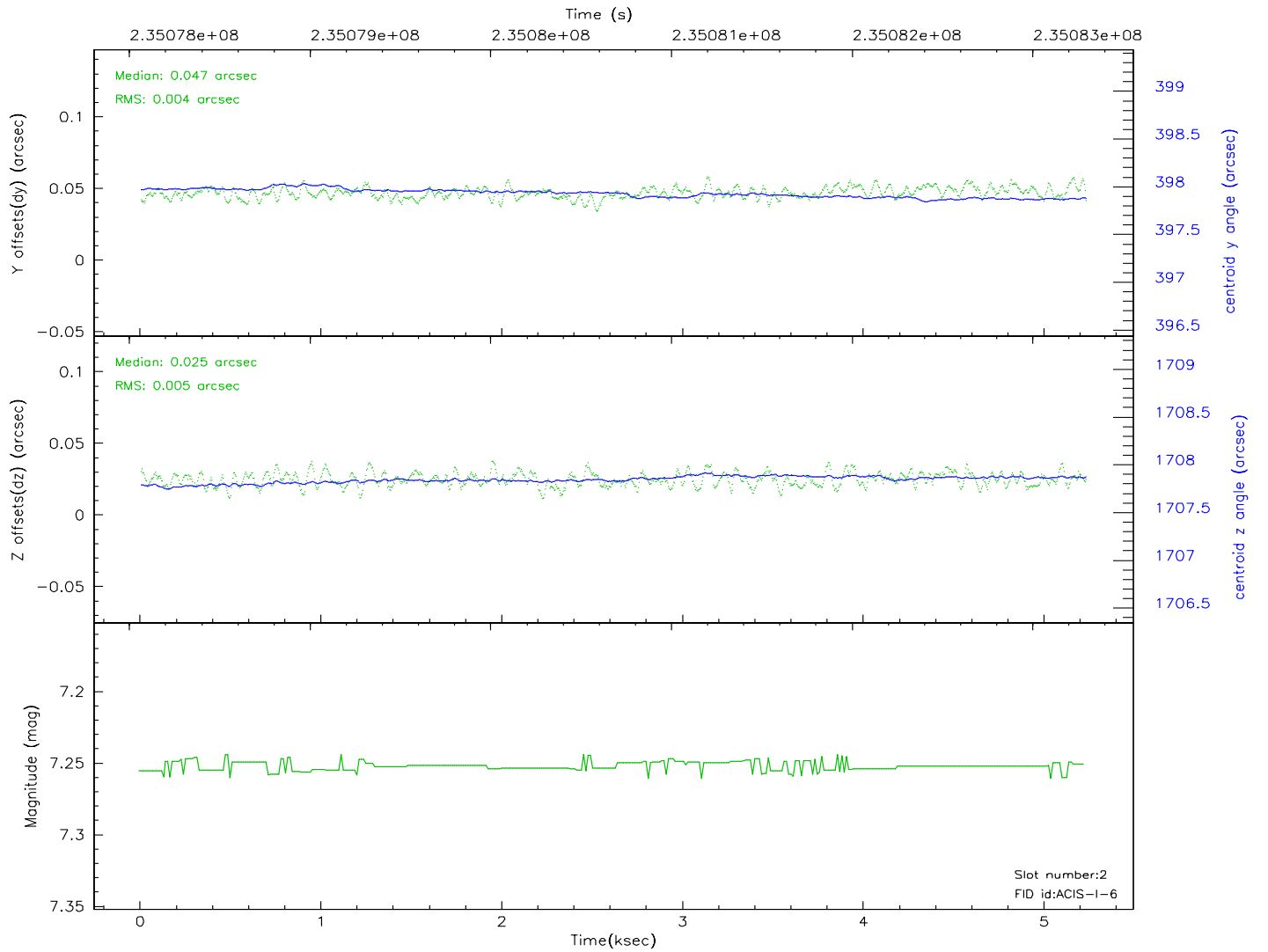
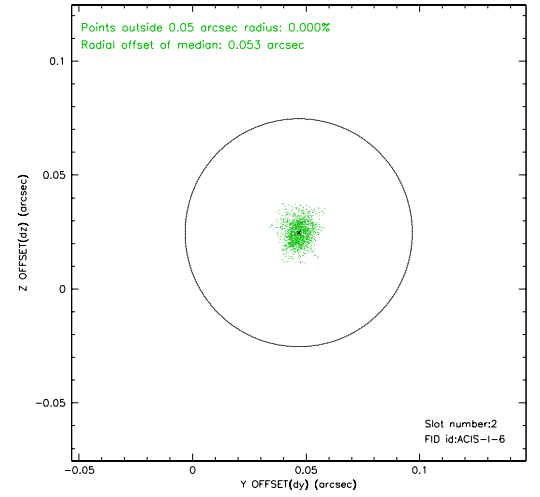
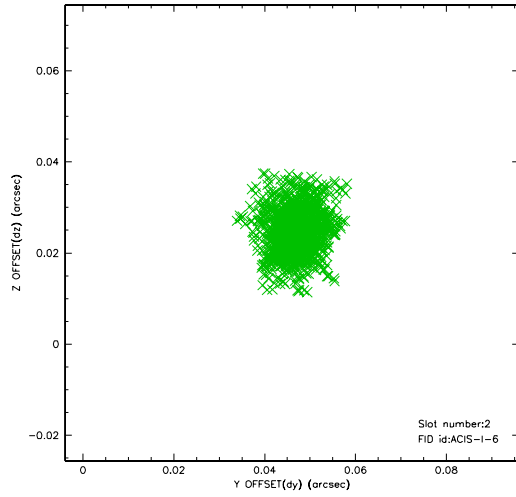
2.5.1 Slot 0



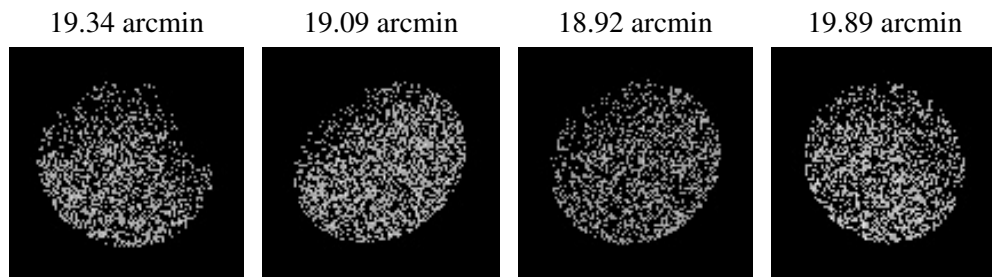
2.5.2 Slot 1



2.5.3 Slot 2



3 Point Sources



A Summary

A.1 Status

V&V Scientist	Jen Lauer
V&V Date (YYYY-MM-DD)	2006.03.10
V&V Edition	1
V&V Disposition and Status	OK
V&V Charge Time	5.043199

A.2 Comments