

V&V Reference Report

L2 ASCDS Version : 8.4.5

Observation 543 - L2 Version 4
Chandra X-Ray Center

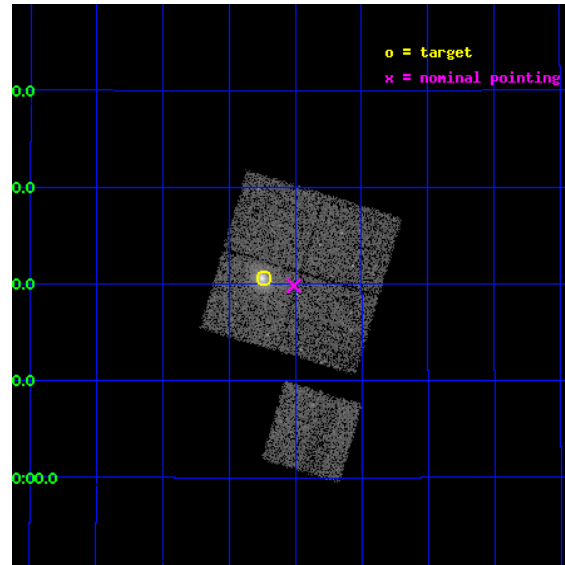
L2 Processing Date : Aug 27 2012

Contents

1	Front	2
2	OBI	3
2.1	OBI	3
2.1.1	Images	3
2.1.2	Bias	3
2.1.3	Parameters	4
2.1.4	Events	4
2.2	Compared Parameters	5
2.3	Aspect	6
2.4	Star Slots	9
2.4.1	Slot 3	9
2.4.2	Slot 4	10
2.4.3	Slot 5	11
2.4.4	Slot 6	12
2.5	FID Slots	13
2.5.1	Slot 0	13
2.5.2	Slot 1	14
2.5.3	Slot 2	15
A	Summary	16
A.1	Status	16
A.2	Comments	16

1 Front

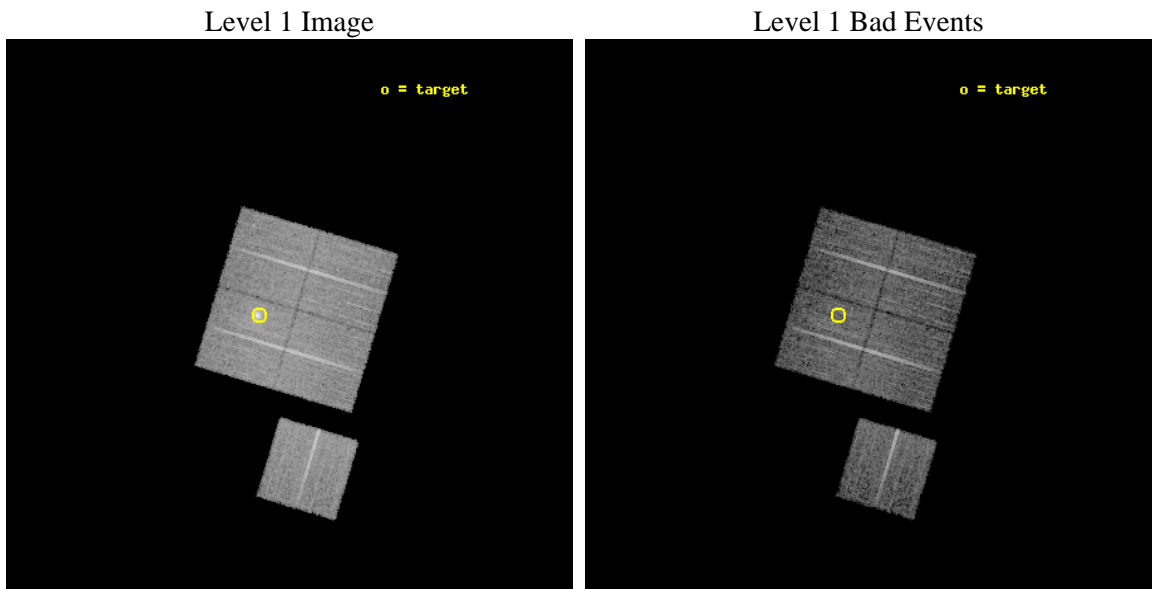
seq_num	800051	Sequence number
obs_id	543	Observation id
title	DETERMINATION OF H0/Q0	Proposal title
observer	DR. LEON VANSPEYBROECK	Principal investigator
object	MS 1455.0+2232	Source name
dtcycle	0	
cycle	P	events from which exps? Prim/Second/Both
ra_targ	224.31	Observer's specified target RA [deg]
dec_targ	22.344	Observer's specified target Dec [deg]
ra_nom	224.25274117016	Nominal RA [deg]
dec_nom	22.330339043522	Nominal Dec [deg]
roll_nom	196.70270787123	Nominal Roll [deg]
revision	4	Processing version of data
ontime	9983.5590078682	Sum of GTIs [s]
livetime	9857.141172333	Livetime [s]
ontime0	9983.4358878732	Sum of GTIs [s]
ontime1	9983.4769278616	Sum of GTIs [s]
ontime2	9983.5179678649	Sum of GTIs [s]
ontime3	9983.5590078682	Sum of GTIs [s]
ontime6	9983.3948478699	Sum of GTIs [s]
l2events	42506	Number of level 2 events



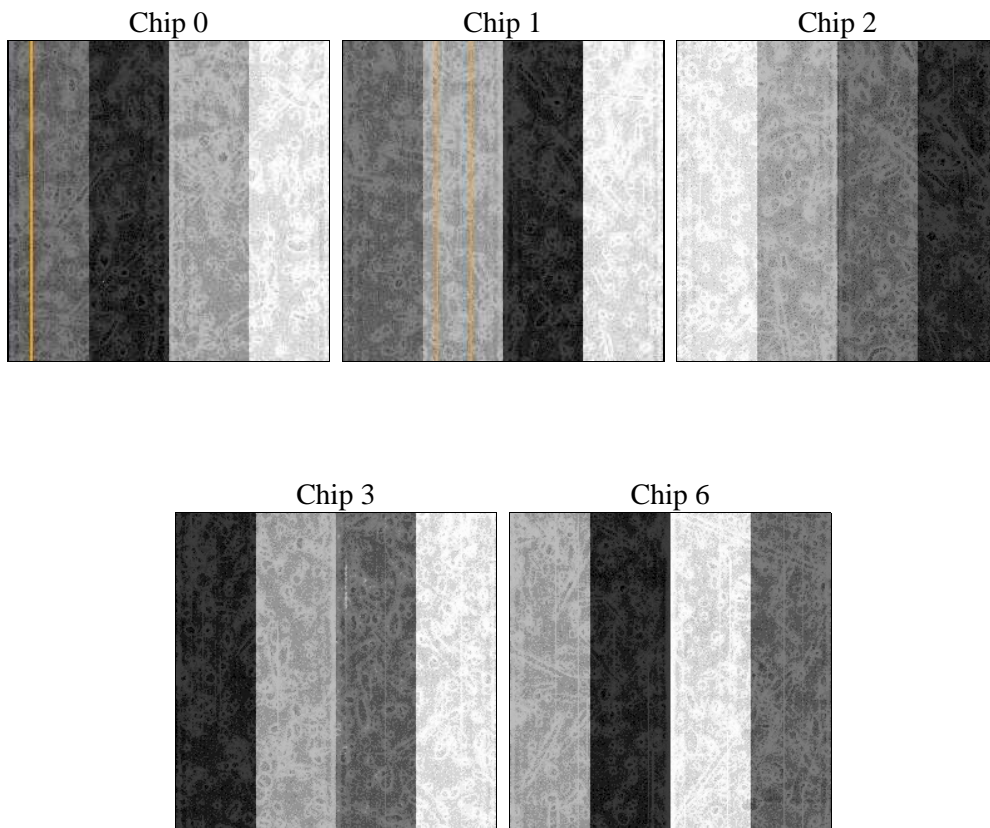
2 OBI

2.1 OBI

2.1.1 Images



2.1.2 Bias



2.1.3 Parameters

obi_num	1	Obi number	sched_exp_time	10000.000000	[s] Scheduled observation exposure time
ascdsver	8.4.5	Processing system revision	ontime	9983.5590078682	Sum of GTIs [s]
caldsver	4.5.1.1	 	ontime0	9983.4358878732	Sum of GTIs [s]
date	2012-08-27T19:53:19	Date and time of file creation	ontime1	9983.4769278616	Sum of GTIs [s]
revision	4	Processing version of data	ontime2	9983.5179678649	Sum of GTIs [s]
			ontime3	9983.5590078682	Sum of GTIs [s]
			ontime6	9983.3948478699	Sum of GTIs [s]
			l1events	347286	Number of level 1 events

2.1.4 Events

	ccd 0	ccd 1	ccd 2	ccd 3	ccd 6
level 1 events	64839	63571	70981	79813	68082
rejected events	56523	54941	62915	63808	60102
rejected %	87%	86%	88%	79%	88%

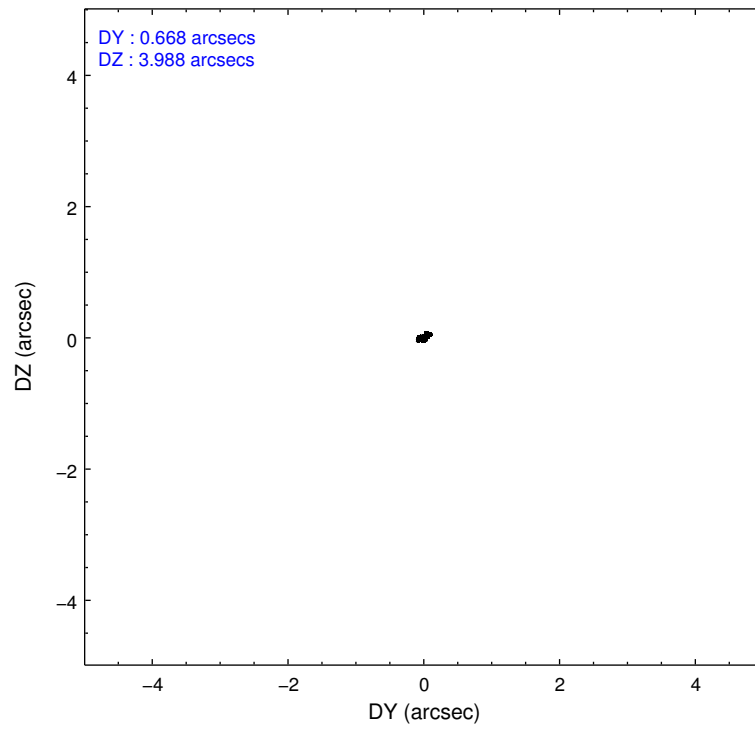
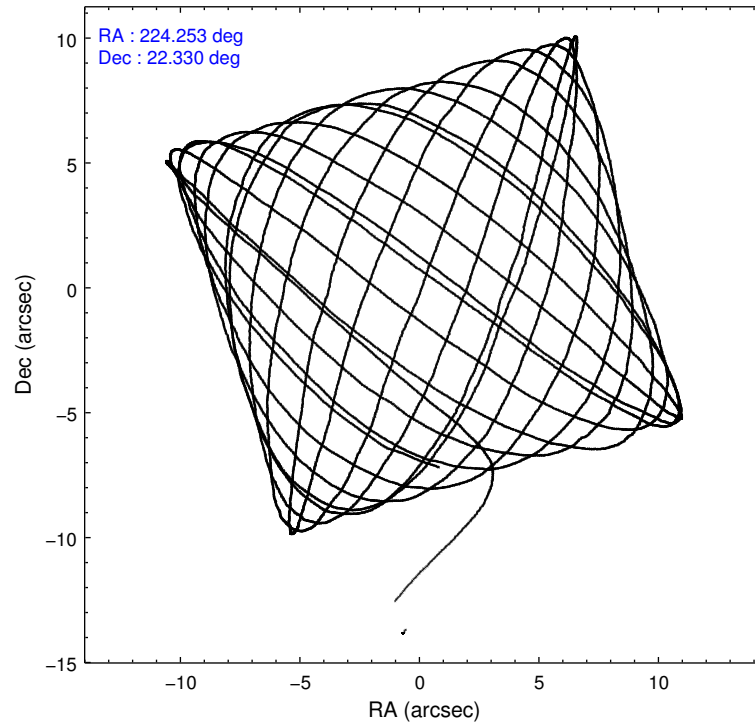
	ccd 0	ccd 1	ccd 2	ccd 3	ccd 6
grade 0 events	3770	3709	3584	10229	3398
	5%	5%	5%	12%	4%
grade 1 events	36	36	29	70	28
	0%	0%	0%	0%	0%
grade 2 events	1712	1739	1730	2402	1547
	2%	2%	2%	3%	2%
grade 3 events	841	837	705	878	826
	1%	1%	0%	1%	1%
grade 4 events	675	825	696	963	721
	1%	1%	0%	1%	1%
grade 5 events	2182	2386	2049	2352	2391
	3%	3%	2%	2%	3%
grade 6 events	1322	1522	1353	1539	1490
	2%	2%	1%	1%	2%
grade 7 events	54301	52517	60835	61380	57681
	83%	82%	85%	76%	84%

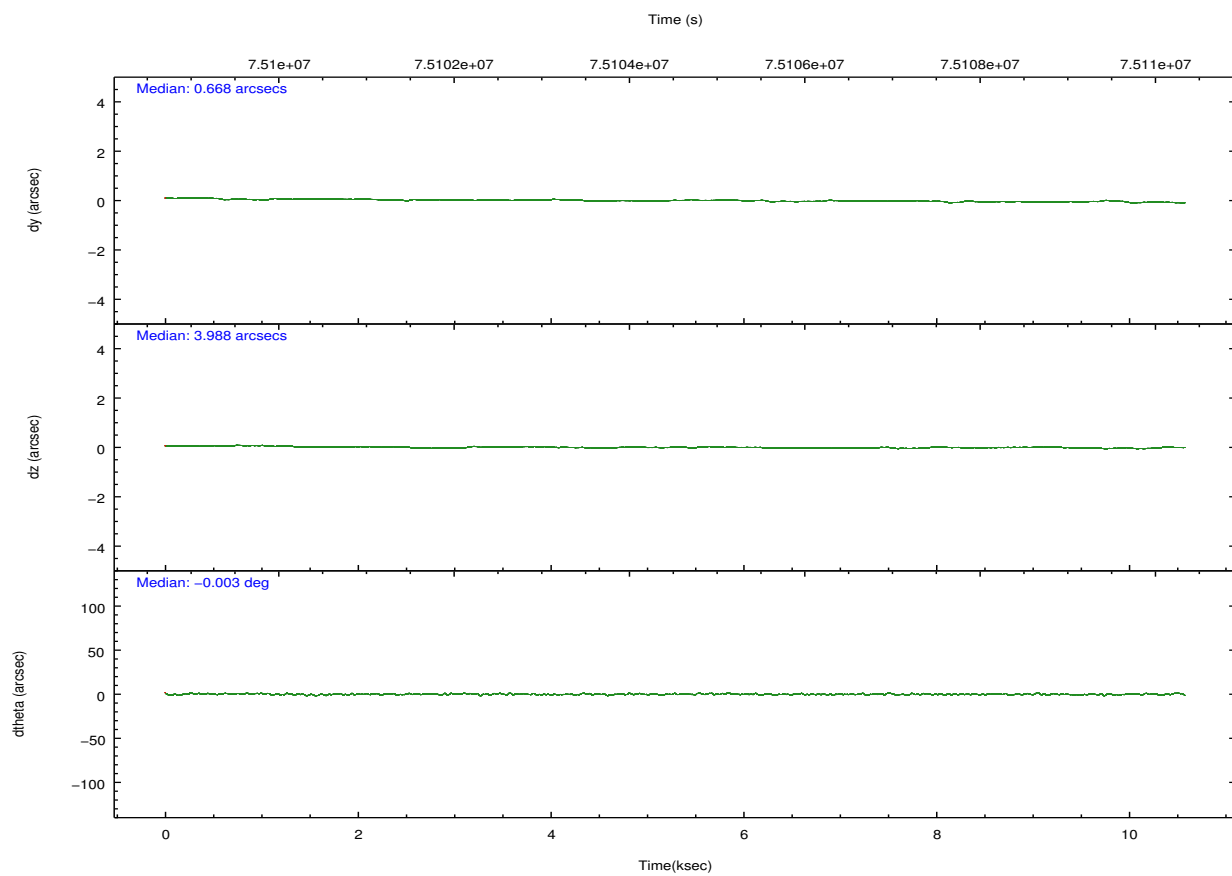
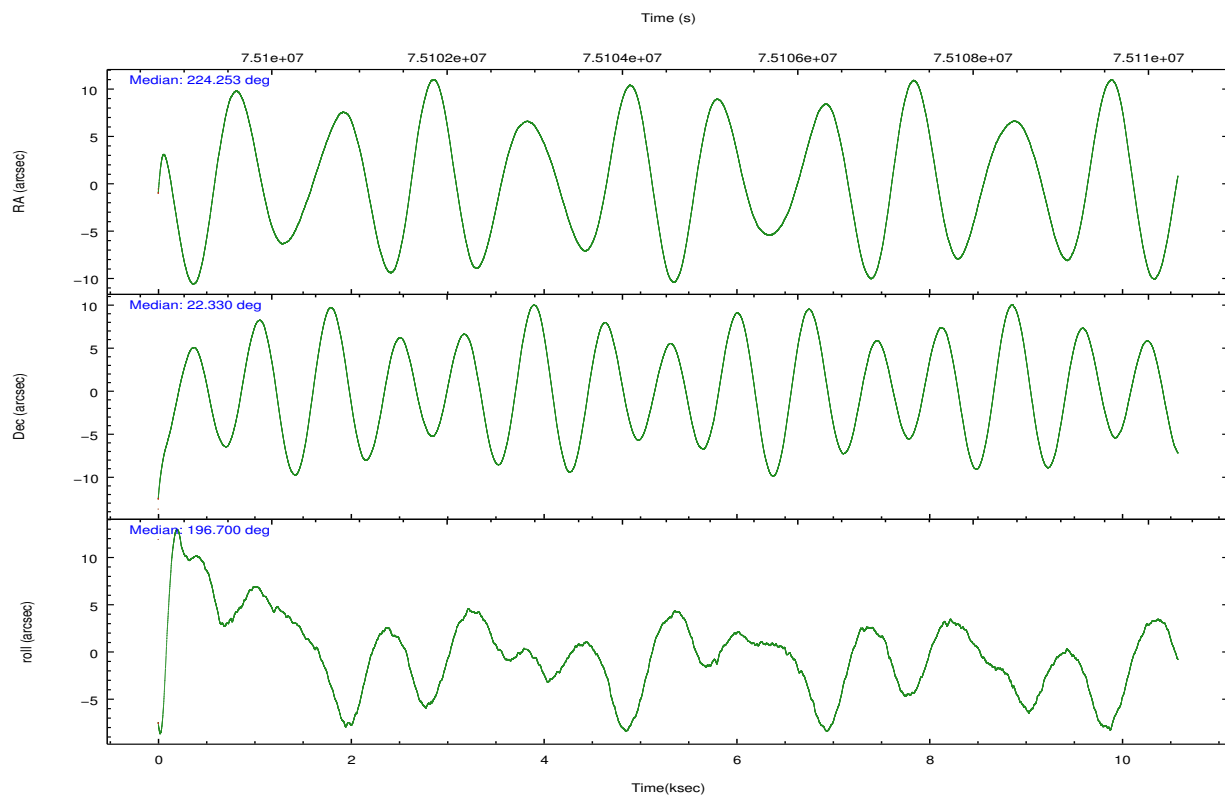
2.2 Compared Parameters

Parameter	Planned	Actual
Instrument	ACIS	ACIS
Detector	ACIS-01236	ACIS-01236
Grating	NONE	NONE
Data mode	FAINT	FAINT
Observation mode	POINTING	POINTING
[deg] Pointing RA	224.273399	224.2527411701554
[deg] Pointing Dec	22.350326	22.33033904352235
[deg] Pointing Roll	196.486184	196.7027078712328
[s] Window start time (MET)	63072064.184000	63072064.184000
[s] Window stop time (MET)	84153664.184000	84153664.184000
[mm] SIM focus pos	-0.782348	-0.7809083437167272
[mm] SIM defocus	0	0.001439871863259334
[mm] SIM translation stage pos	-230.592463	-230.5903706213692
[mm] SIM translation stage offset	-3	-3.002082381560513
[s] Observation start time (MET)	75099807.184000	75098658.066089
Observation start date	2000-05-19T05:02:23	2000-05-19T04:44:18
[s] Observation end time (MET)	75109807.184000	75110464.016523
Observation end date	2000-05-19T07:49:03	2000-05-19T08:01:04
Read mode	TIMED	TIMED

Parameter	Planned	Actual
Obspar format version number	7	7
Obspar file type	PREDICTED	ACTUAL
Obspar update status	NONE	UPDATED
Number of optional ACIS chips dropped	0	0
On-chip summing requested	N	N
Subarray requested	NONE	NONE
Alternating exposures requested	N	N
[s] Primary exposure time	0.000000	3.2

2.3 Aspect



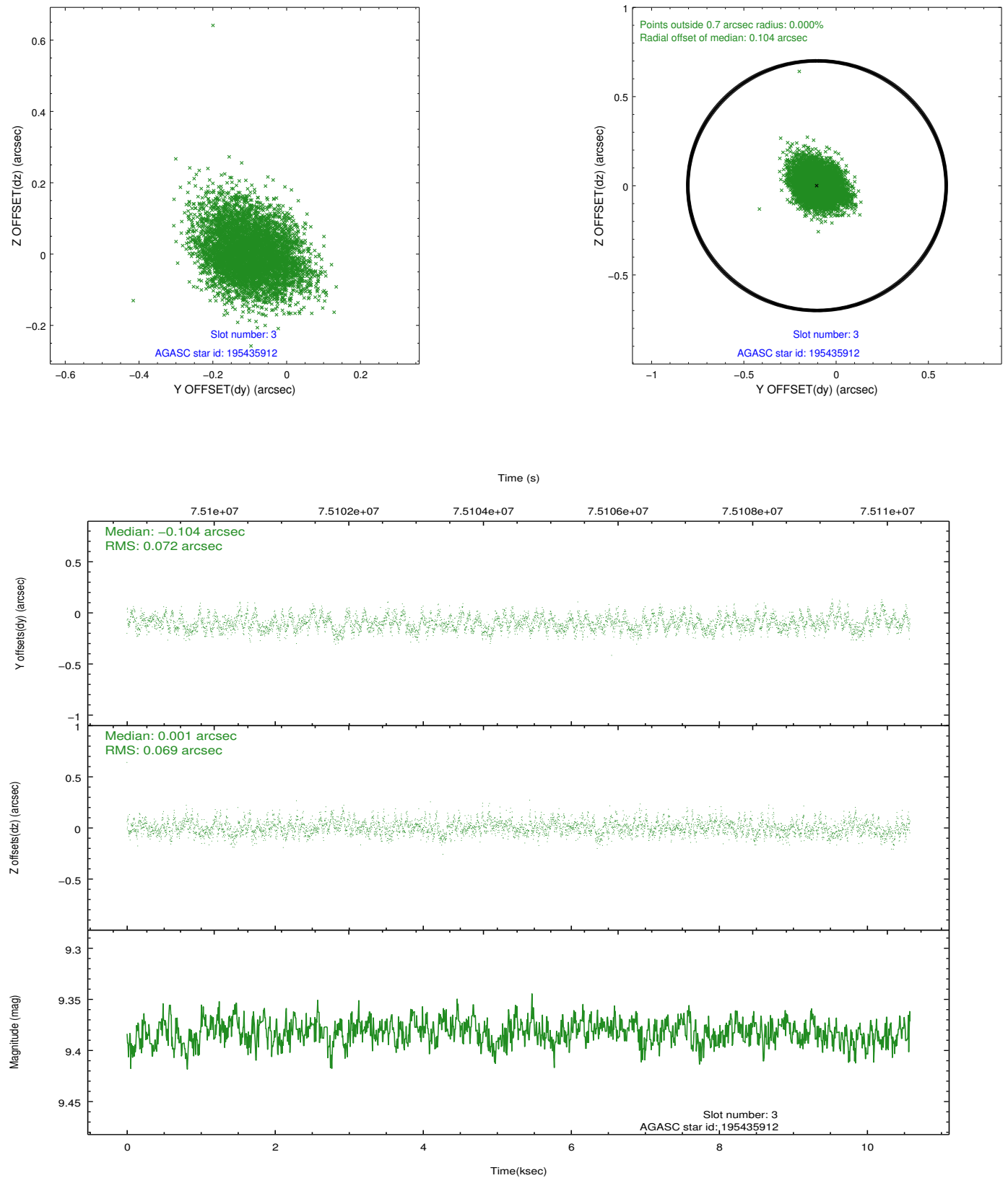


Slot Statistics

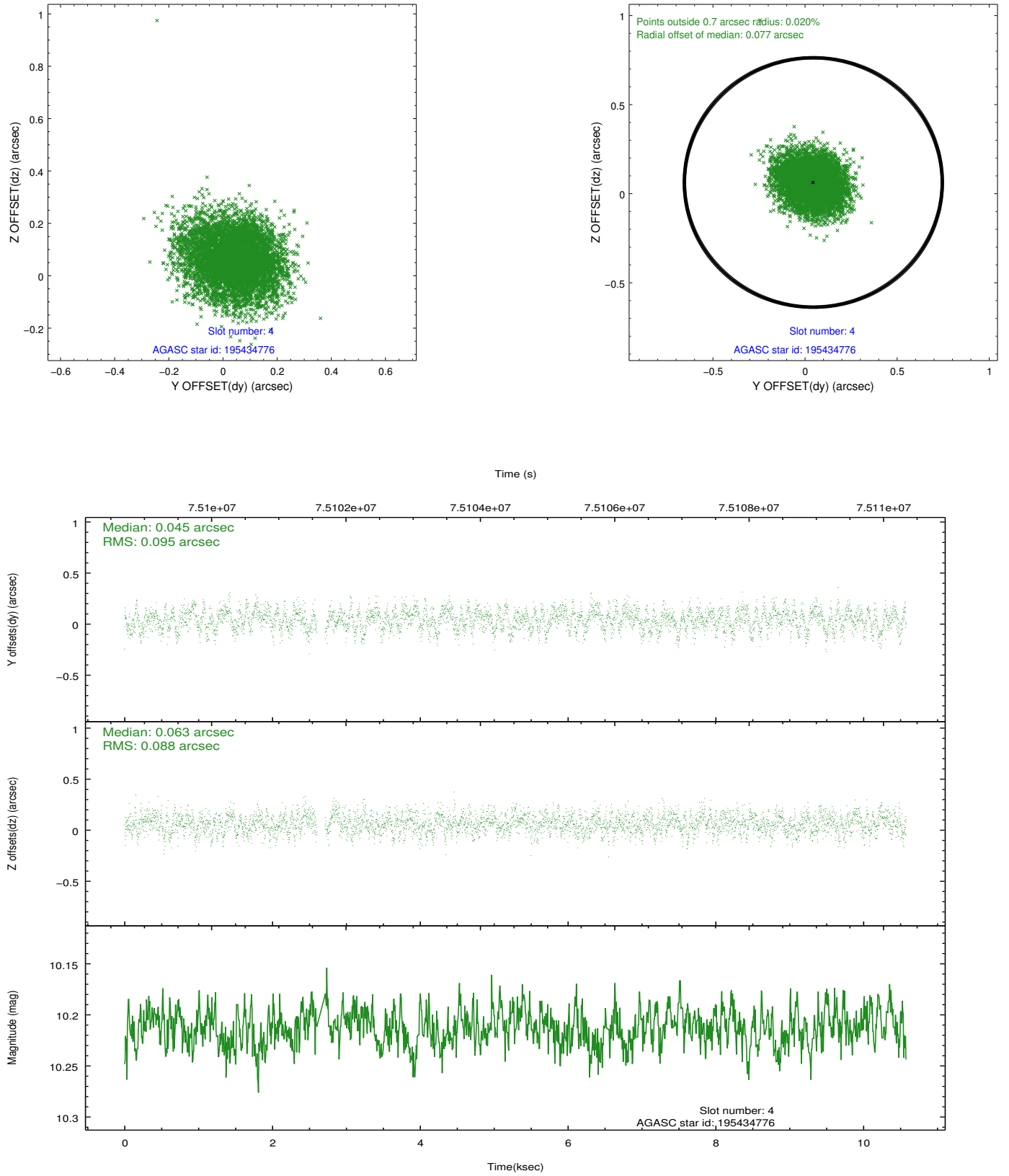
slot	status	id	mag	n_pts	med_dy	med_dz	dr1	dr2	ra	dec	mean_y	mean_z
0	FID	ACIS-I-2	7.16	2580	-0.031	-0.056	0.008	0.014	0.000000	0.000000	-755.21	-894.90
1	FID	ACIS-I-4	7.17	2581	-0.022	0.041	0.006	0.011	0.000000	0.000000	2158.59	1011.12
2	FID	ACIS-I-5	7.22	2581	-0.048	0.083	0.009	0.014	0.000000	0.000000	-1808.29	1009.14
3	GUIDE	195435912	9.38	5155	-0.104	0.001	0.106	0.170	225.108868	22.040888	-2359.61	1852.18
4	GUIDE	195434776	10.21	5100	0.045	0.063	0.139	0.218	224.894254	22.153508	-1785.70	1263.42
5	GUIDE	264380752	10.26	5156	-0.011	-0.023	0.120	0.204	224.720923	22.632014	-1714.68	-552.14
6	GUIDE	194514736	9.17	5159	0.068	-0.039	0.067	0.112	223.996360	22.211386	1026.75	216.96
7	UNUSED		0.00	0	0.000	0.000	0.000	0.000	0.000000	0.000000	0.00	0.00

2.4 Star Slots

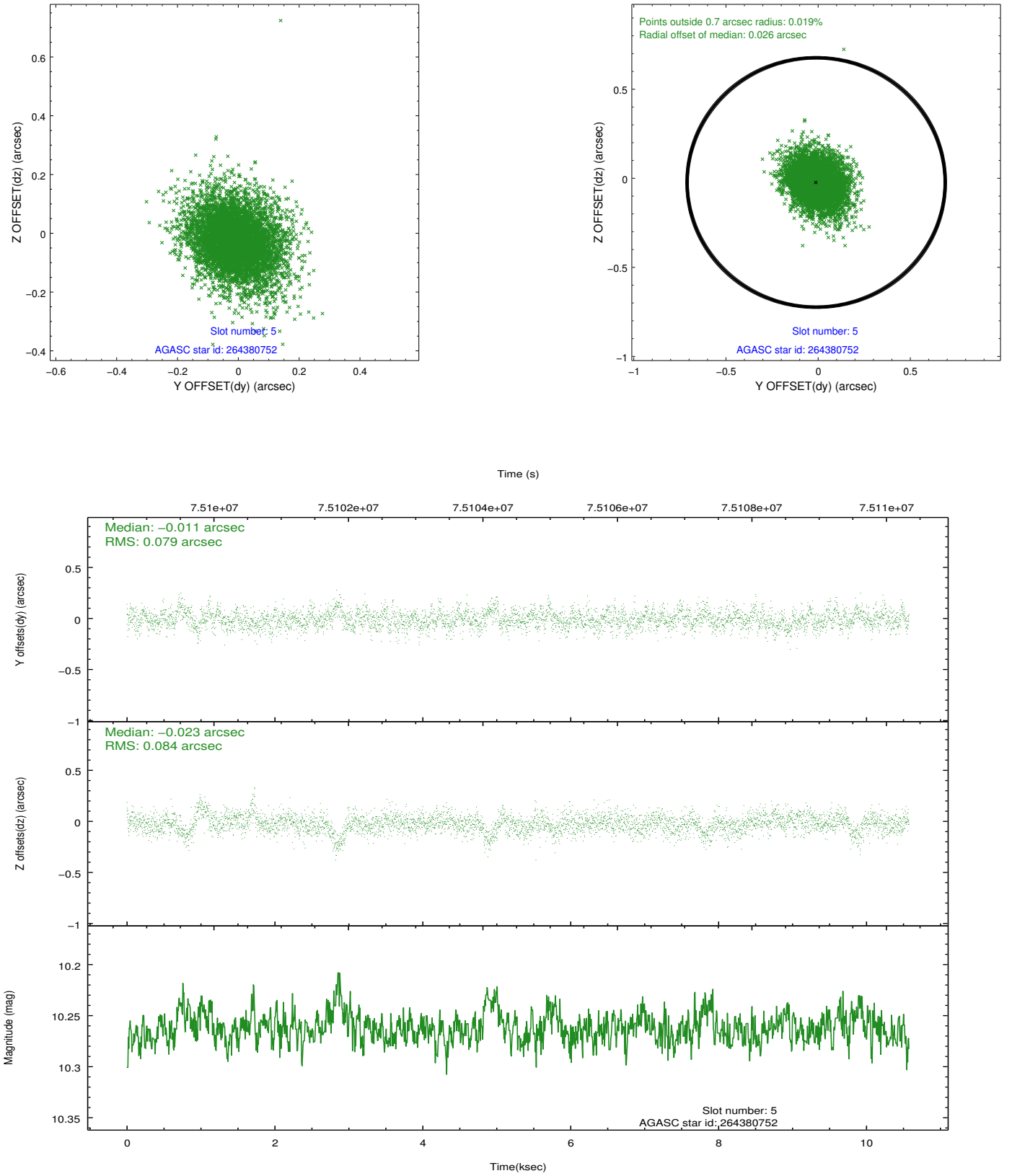
2.4.1 Slot 3



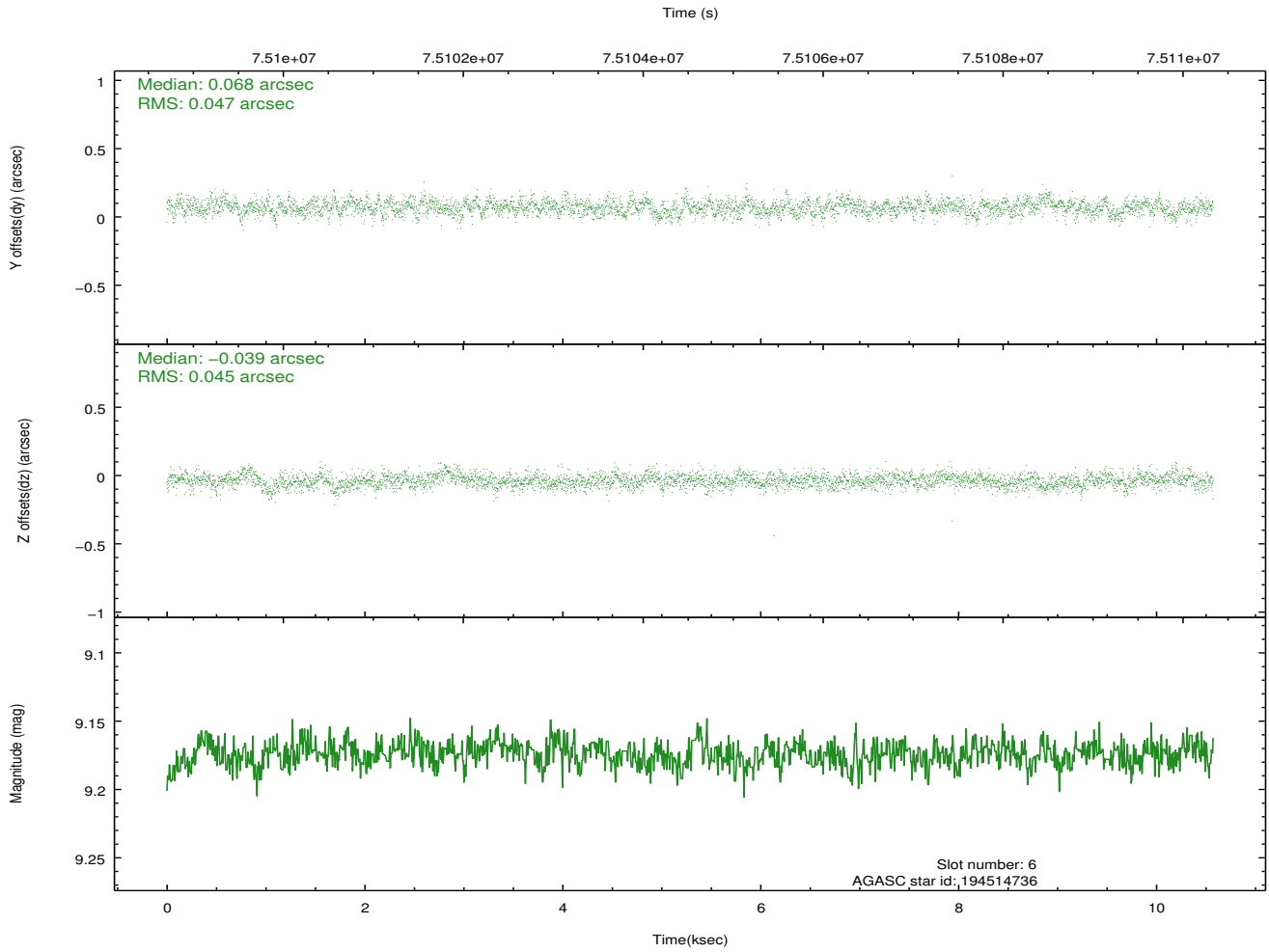
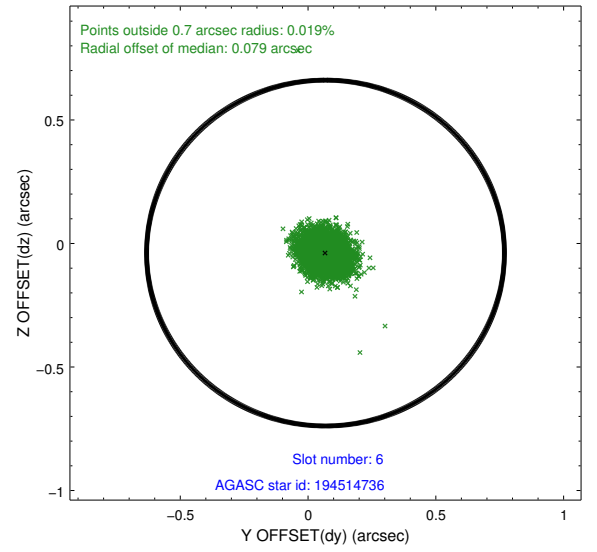
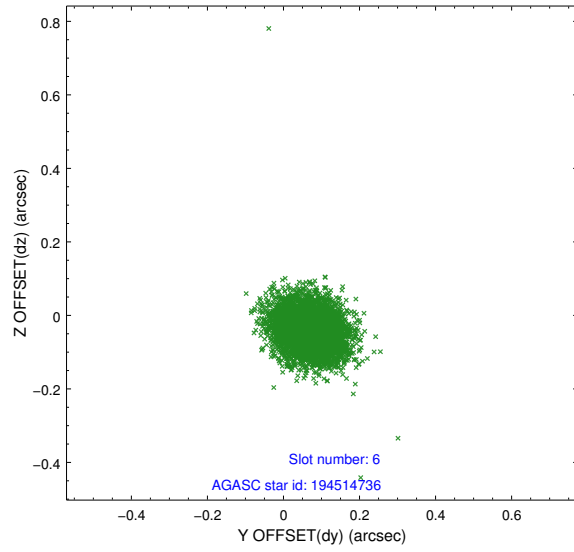
2.4.2 Slot 4



2.4.3 Slot 5

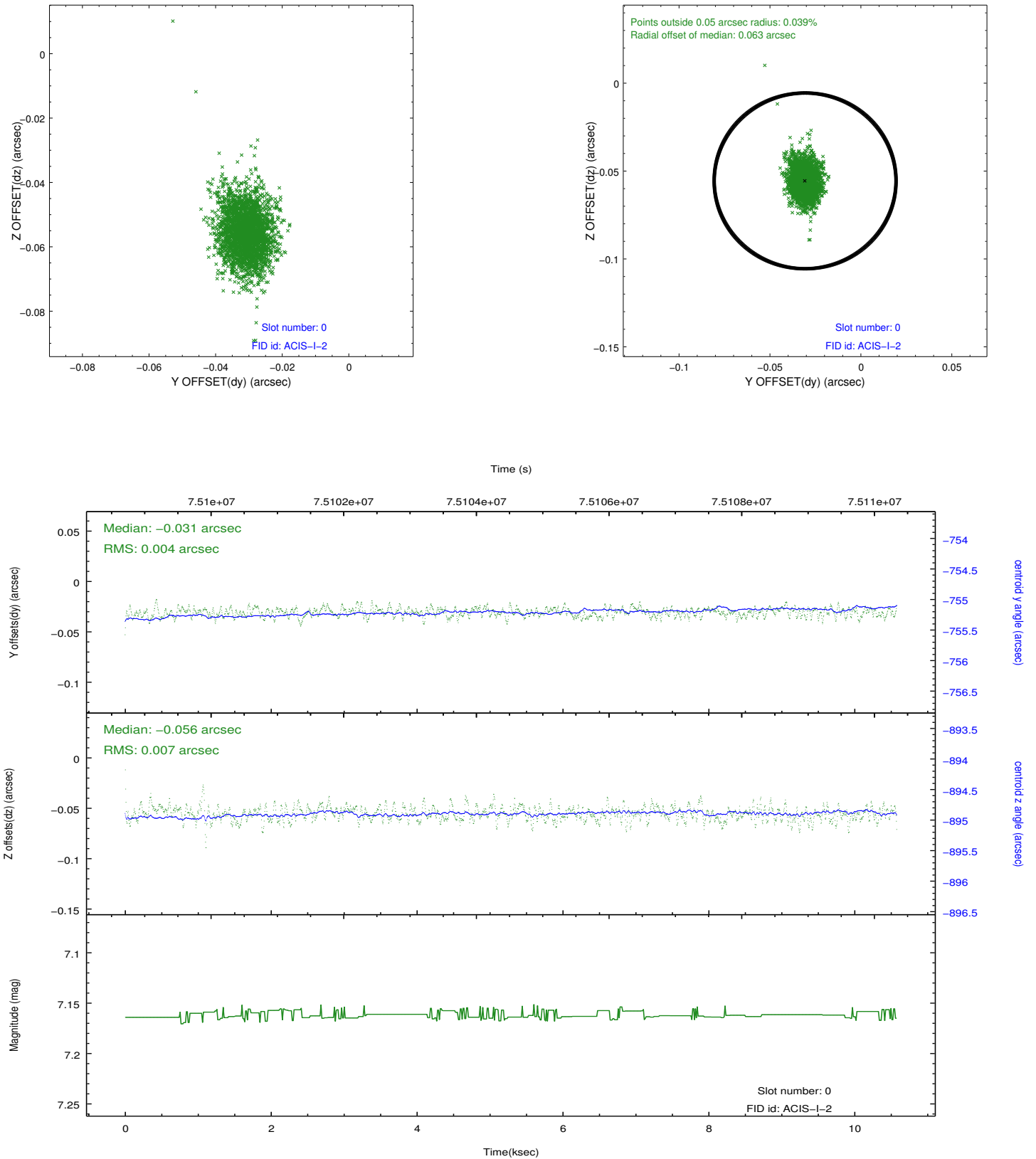


2.4.4 Slot 6

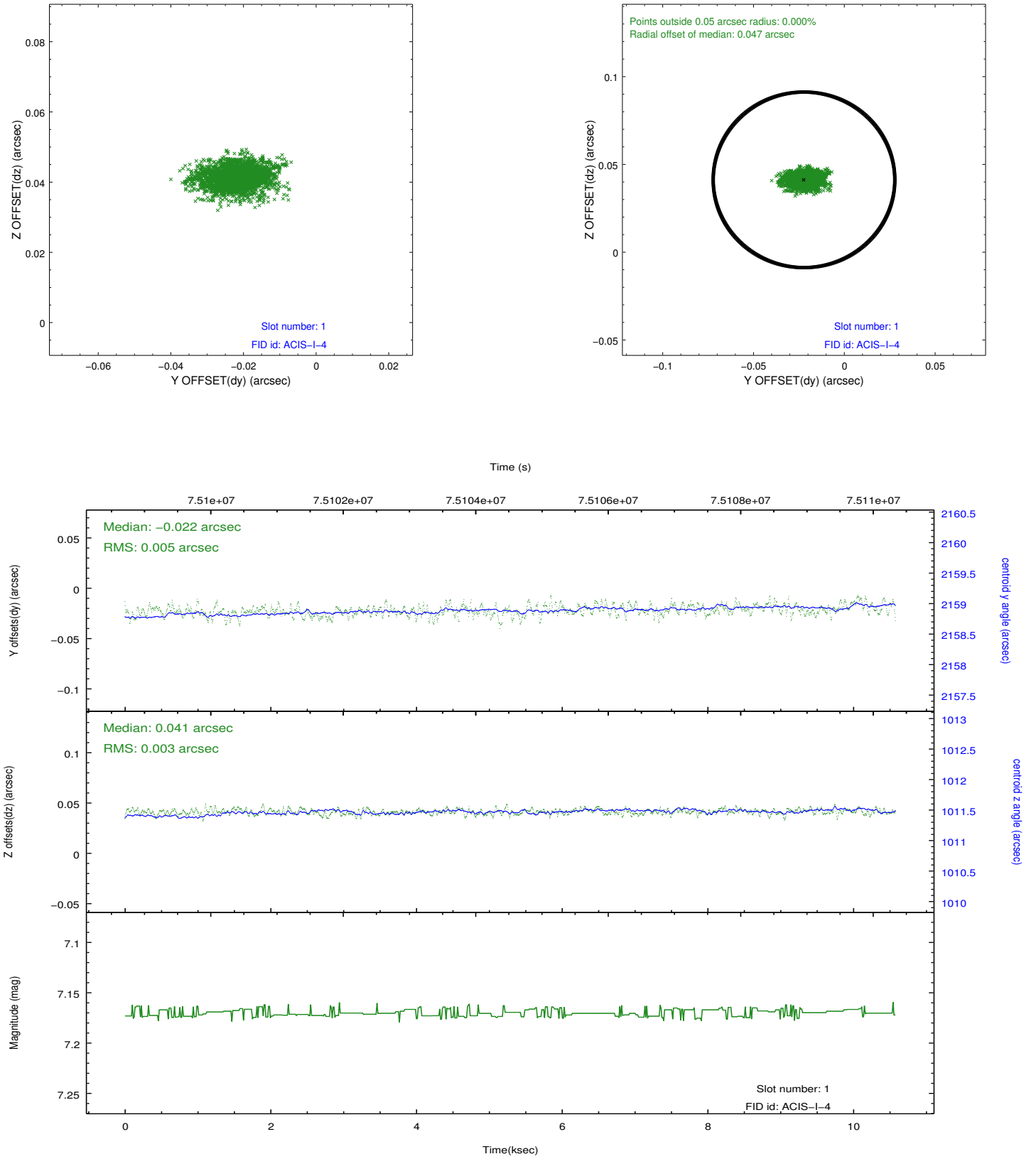


2.5 FID Slots

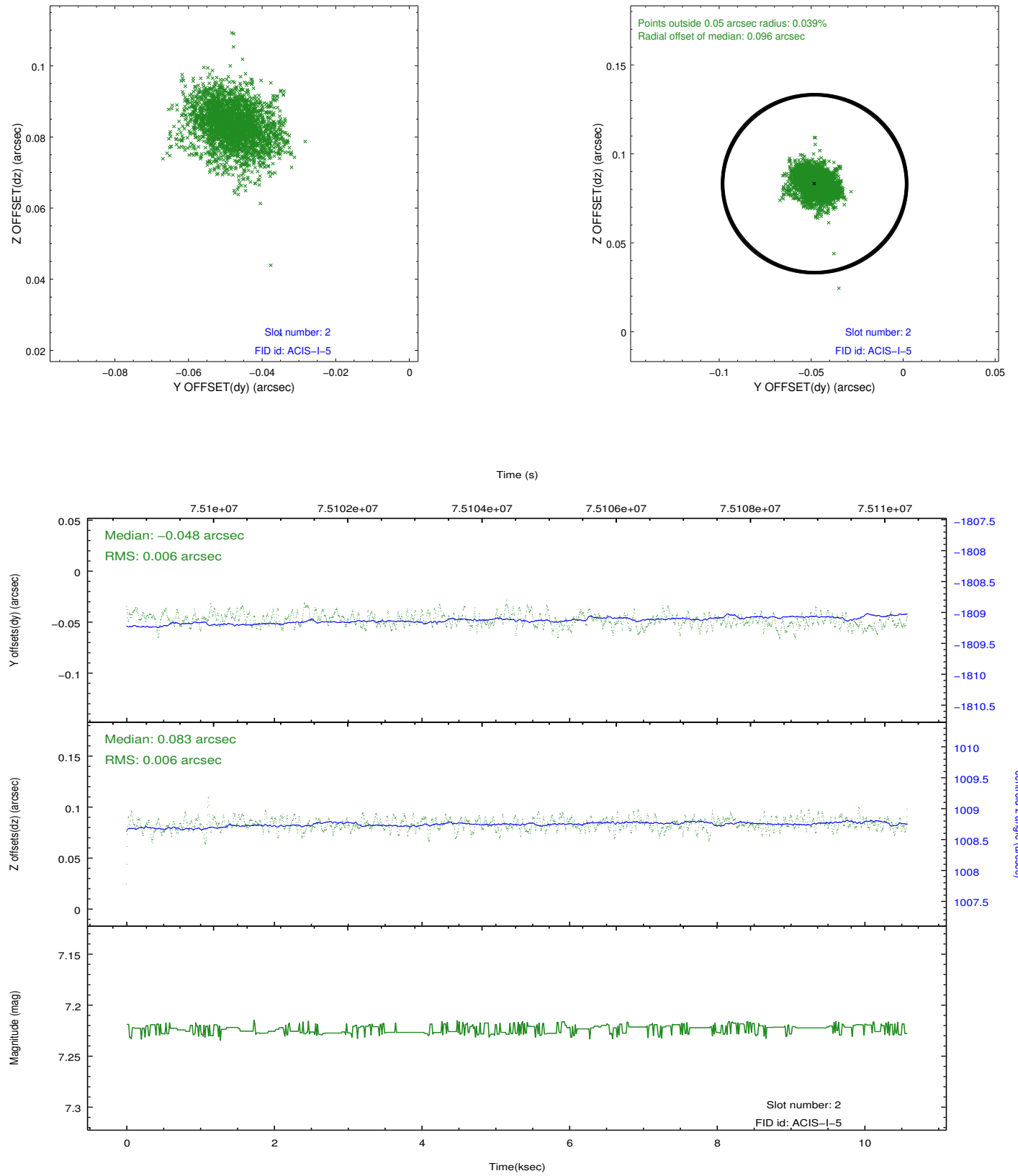
2.5.1 Slot 0



2.5.2 Slot 1



2.5.3 Slot 2



A Summary

A.1 Status

V&V Scientist	Beth Sundheim
V&V Date (YYYY-MM-DD)	2012.08.29
V&V Edition	1
V&V Disposition and Status	OK
V&V Charge Time	9.984

A.2 Comments

Window preference met.

Slot 7 was not utilized in this observation.