

# V&V Reference Report

## L2 ASCDS Version : 8.4.5

Observation 54283 - L2 Version 1  
Chandra X-Ray Center

L2 Processing Date : Oct 1 2012

## Contents

<b>1</b>	<b>Front</b>	<b>2</b>
<b>2</b>	<b>OBI</b>	<b>3</b>
2.1	OBI . . . . .	3
2.1.1	Images . . . . .	3
2.1.2	Bias . . . . .	3
2.1.3	Parameters . . . . .	4
2.1.4	Events . . . . .	4
2.2	Compared Parameters . . . . .	5
2.3	Star Slots . . . . .	6
2.4	FID Slots . . . . .	6
<b>A</b>	<b>Summary</b>	<b>7</b>
A.1	Status . . . . .	7
A.2	Comments . . . . .	7

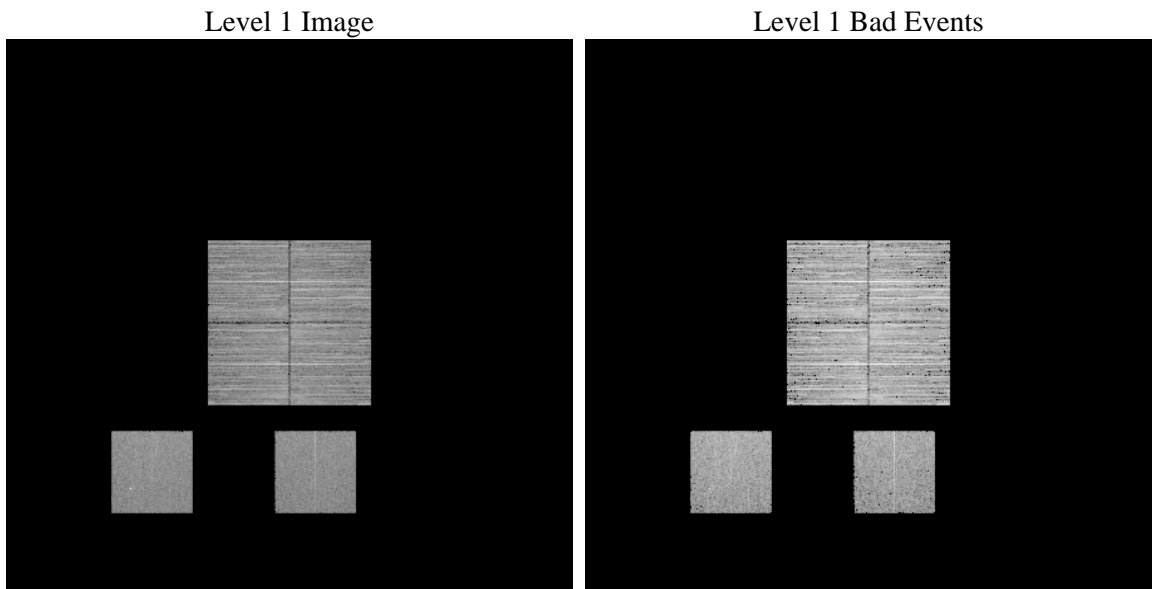
# 1 Front

seq_num	&#160	Sequence number
obs_id	54283	Observation id
title	ACIS-012357 diagnostics	Proposal title
observer	CHANDRA engineering request/realtime commanding	Principal investig
object	&#160	Source name
dtcycle	0	&#160
cycle	P	events from which exps? Prim/Second/Both
ra_targ	0.0	Observer's specified target RA [deg]
dec_targ	0.0	Observer's specified target Dec [deg]
ra_nom	12.825945543379	Nominal RA [deg]
dec_nom	-23.175471255084	Nominal Dec [deg]
roll_nom	12.403628207979	Nominal Roll [deg]
revision	1	Processing version of data
ontime	4494.0495330691	Sum of GTIs [s]
livetime	4437.1431718897	Livetime [s]
ontime0	4494.0905533433	Sum of GTIs [s]
ontime1	4494.1315933466	Sum of GTIs [s]
ontime2	4495.9999833107	Sum of GTIs [s]
ontime3	4494.0084733367	Sum of GTIs [s]
ontime5	4495.9999833107	Sum of GTIs [s]
ontime7	4494.0495330691	Sum of GTIs [s]
l2events	145060	Number of level 2 events

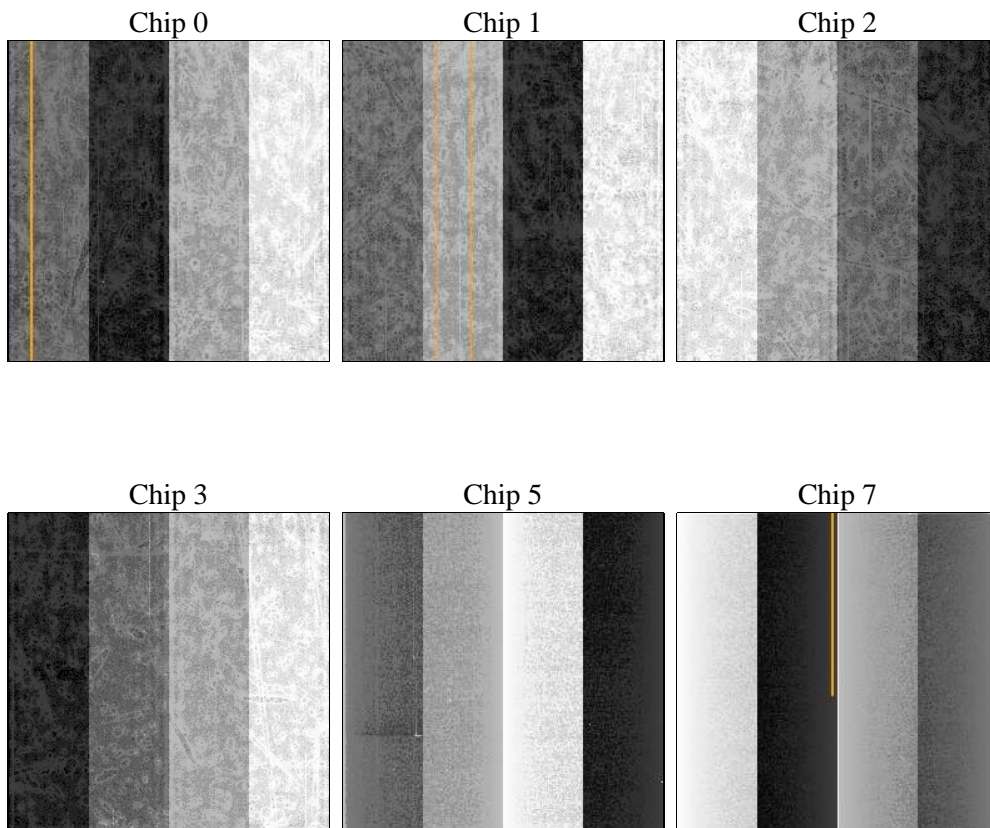
## 2 OBI

### 2.1 OBI

#### 2.1.1 Images



#### 2.1.2 Bias



### 2.1.3 Parameters

obi_num	0	Obi number	sched_exp_time	0.0	[s] Scheduled observation exposure time
ascdsver	8.4.5	Processing system revision	ontime	4494.0495330691	Sum of GTIs [s]
caldbver	4.5.2	&#160	ontime0	4494.0905533433	Sum of GTIs [s]
date	2012-10-01T07:01:39	Date and time of file creation	ontime1	4494.1315933466	Sum of GTIs [s]
revision	1	Processing version of data	ontime2	4495.9999833107	Sum of GTIs [s]
			ontime3	4494.0084733367	Sum of GTIs [s]
			ontime5	4495.9999833107	Sum of GTIs [s]
			ontime7	4494.0495330691	Sum of GTIs [s]
			l1events	509326	Number of level 1 events

### 2.1.4 Events

	ccd 0	ccd 1	ccd 2	ccd 3	ccd 5	ccd 7
level 1 events	87973	90598	88881	91737	77592	72545
rejected events	67987	70317	68644	71321	40776	37223
rejected %	77%	77%	77%	77%	52%	51%

	ccd 0	ccd 1	ccd 2	ccd 3	ccd 5	ccd 7
grade 0 events	10330	10046	10677	10847	3609	5431
	11%	11%	12%	11%	4%	7%
grade 1 events	45	60	72	82	65	49
	0%	0%	0%	0%	0%	0%
grade 2 events	3776	4179	3784	3777	13527	8628
	4%	4%	4%	4%	17%	11%
grade 3 events	1367	1335	1434	1364	2256	3055
	1%	1%	1%	1%	2%	4%
grade 4 events	1367	1402	1370	1367	1256	2955
	1%	1%	1%	1%	1%	4%
grade 5 events	1743	1694	1593	1844	3527	4268
	1%	1%	1%	2%	4%	5%
grade 6 events	3146	3319	2972	3061	16168	15253
	3%	3%	3%	3%	20%	21%
grade 7 events	66199	68563	66979	69395	37184	32906
	75%	75%	75%	75%	47%	45%

## 2.2 Compared Parameters

Parameter	Planned	Actual	Parameter	Planned	Actual
Instrument	ACIS	ACIS	Obspar format version number	7	7
Detector	ACIS-012357	ACIS-012357	Obspar file type	PREDICTED	ACTUAL
Grating	NONE	NONE	Obspar update status	NONE	UPDATED
Data mode	FAINT	FAINT	Number of optional ACIS chips dropped	0	0
Observation mode	SECONDARY	SECONDARY	On-chip summing requested	N	N
[deg] Pointing RA	0	12.82594554337858	Subarray requested	NONE	NONE
[deg] Pointing Dec	0	-23.17547125508403	Alternating exposures requested	N	N
[deg] Pointing Roll	0.0	12.40362820797884	[s] Primary exposure time	3.2	3.2
[mm] SIM focus pos	-1.429586	-1.428180813131781			
[mm] SIM defocus	0.1037507710433287	0.1051558262725154			
[mm] SIM translation stage pos	250.455976	250.466033080201			
[mm] SIM translation stage offset	0	-0.01005468664627074			
[s] Observation start time (MET)	465422325.350583	465422324.32558			
Observation start date	2012-09-30T19:58:45	2012-09-30T19:58:44			
[s] Observation end time (MET)	465429775.050982	465429774.02598			
Observation end date	2012-09-30T22:02:55	2012-09-30T22:02:54			
Read mode	TIMED	TIMED			

## 2.3 Star Slots

## 2.4 FID Slots

## A Summary

### A.1 Status

V&V Scientist	Joy Nichols
V&V Date (YYYY-MM-DD)	2012.10.01
V&V Edition	1
V&V Disposition and Status	OK
V&V Charge Time	4.4940495330691

### A.2 Comments