

V&V Reference Report

L2 ASCDS Version : 8.5.1.1

Observation 54003 - L2 Version 1
Chandra X-Ray Center

L2 Processing Date : Jan 22 2013

Contents

1	Front	2
2	OBI	3
2.1	OBI	3
2.1.1	Images	3
2.1.2	Bias	3
2.1.3	Parameters	4
2.1.4	Events	4
2.2	Compared Parameters	5
2.3	Star Slots	6
2.4	FID Slots	6
A	Summary	7
A.1	Status	7
A.2	Comments	7

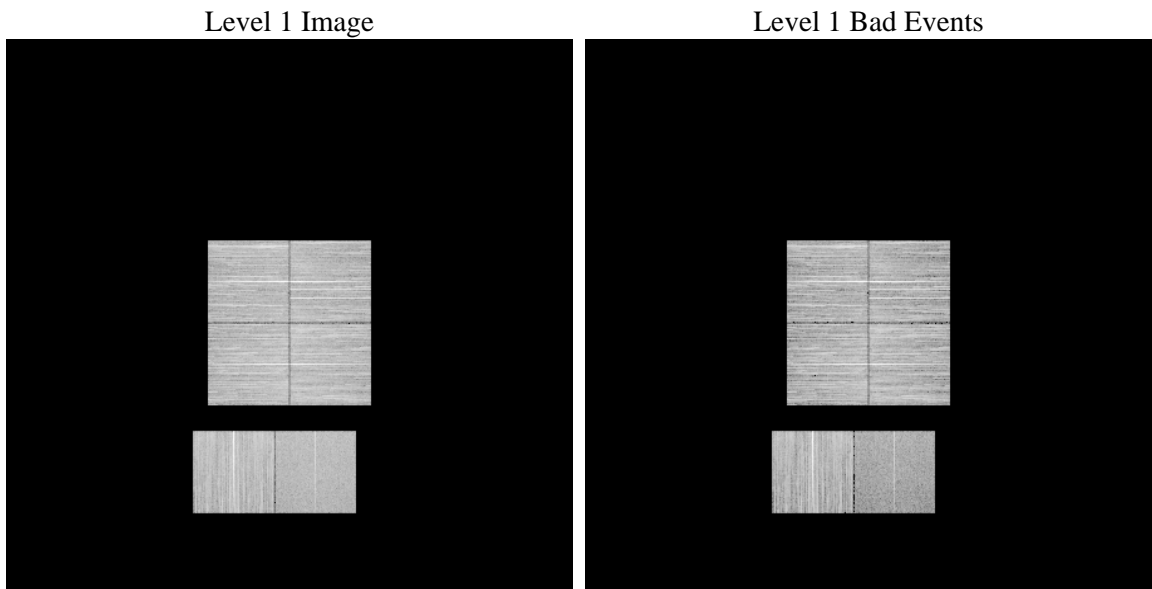
1 Front

seq_num	 	Sequence number
obs_id	54003	Observation id
title	ACIS-012367 diagnostics	Proposal title
observer	CHANDRA engineering request/realtime commanding	Principal investig
object	 	Source name
dtcycle	0	
cycle	P	events from which exps? Prim/Second/Both
ra_targ	0.0	Observer's specified target RA [deg]
dec_targ	0.0	Observer's specified target Dec [deg]
ra_nom	127.62246853393	Nominal RA [deg]
dec_nom	-7.4817191252942	Nominal Dec [deg]
roll_nom	6.538142041989	Nominal Roll [deg]
revision	1	Processing version of data
ontime	8210.8196069002	Sum of GTIs [s]
livetime	8106.8492650756	Livetime [s]
ontime0	8210.7785668969	Sum of GTIs [s]
ontime1	8210.7375268936	Sum of GTIs [s]
ontime2	8210.6964868903	Sum of GTIs [s]
ontime3	8210.8606469035	Sum of GTIs [s]
ontime6	8210.655446887	Sum of GTIs [s]
ontime7	8210.8196069002	Sum of GTIs [s]
l2events	226774	Number of level 2 events

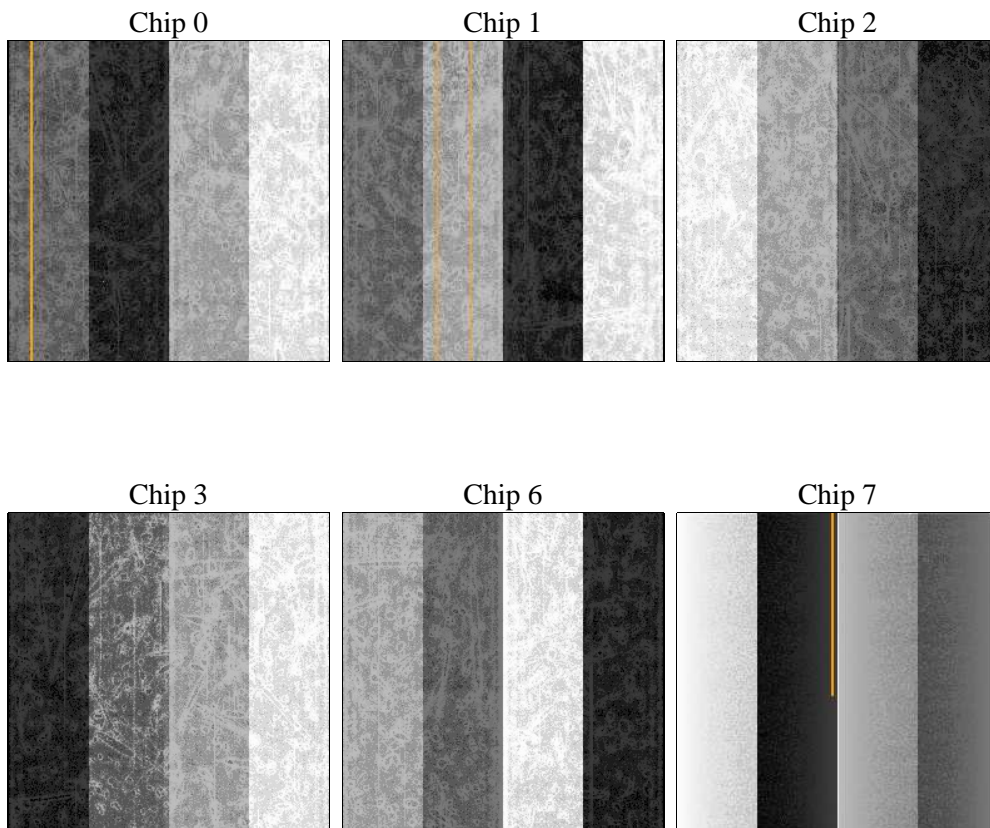
2 OBI

2.1 OBI

2.1.1 Images



2.1.2 Bias



2.1.3 Parameters

obi_num	0	Obi number	sched_exp_time	0.0	[s] Scheduled observation exposure time
ascdsver	8.5.1.1	Processing system revision	ontime	8210.8196069002	Sum of GTIs [s]
caldsver	4.5.5	 	ontime0	8210.7785668969	Sum of GTIs [s]
date	2013-01-22T23:03:47	Date and time of file creation	ontime1	8210.7375268936	Sum of GTIs [s]
revision	1	Processing version of data	ontime2	8210.6964868903	Sum of GTIs [s]
			ontime3	8210.8606469035	Sum of GTIs [s]
			ontime6	8210.655446887	Sum of GTIs [s]
			ontime7	8210.8196069002	Sum of GTIs [s]
			l1events	966536	Number of level 1 events

2.1.4 Events

	ccd 0	ccd 1	ccd 2	ccd 3	ccd 6	ccd 7		ccd 0	ccd 1	ccd 2	ccd 3	ccd 6	ccd 7
level 1 events	162519	160064	170074	170715	167404	135760	grade 0 events	17819	17539	18697	18465	18343	9811
rejected events	127939	124984	135057	135802	130770	71883		10%	10%	10%	10%	10%	7%
rejected %	78%	78%	79%	79%	78%	52%	grade 1 events	119	108	92	111	91	112
								0%	0%	0%	0%	0%	0%
							grade 2 events	6949	7369	6674	6619	7470	15607
								4%	4%	3%	3%	4%	11%
							grade 3 events	2358	2385	2463	2438	2431	5509
								1%	1%	1%	1%	1%	4%
							grade 4 events	2326	2374	2345	2471	2336	5310
								1%	1%	1%	1%	1%	3%
							grade 5 events	3040	3274	2961	3313	3377	8342
								1%	2%	1%	1%	2%	6%
							grade 6 events	5477	5759	5187	5290	6397	28253
								3%	3%	3%	3%	3%	20%
							grade 7 events	124431	121256	131655	132008	126959	62816
								76%	75%	77%	77%	75%	46%

2.2 Compared Parameters

Parameter	Planned	Actual
Instrument	ACIS	ACIS
Detector	ACIS-012367	ACIS-012367
Grating	NONE	NONE
Data mode	FAINT	FAINT
Observation mode	SECONDARY	SECONDARY
[deg] Pointing RA	0	127.6224685339272
[deg] Pointing Dec	0	-7.481719125294249
[deg] Pointing Roll	0.0	6.538142041988968
SIM focus pos (mm)	-1.4281808131	-1.4281808131
[mm] SIM defocus	0.1051557500557434	0.1051557500557434
SIM translation stage pos (mm)	250.4660330802	250.4660330802
[mm] SIM translation stage offset	-0.01005726120527584	-0.01005726120527584
[s] Observation start time (MET)	475219636.677605	475219636.677605
Observation start date	2013-01-22T05:27:17	2013-01-22T05:27:16
[s] Observation end time (MET)	475229183.54263	475229183.54263
Observation end date	2013-01-22T08:06:24	2013-01-22T08:06:23
Read mode	TIMED	TIMED

Parameter	Planned	Actual
Obspar format version number	7	7
Obspar file type	PREDICTED	ACTUAL
Obspar update status	OVERRIDE	OVERRIDE
Number of optional ACIS chips dropped	0	0
On-chip summing requested	N	N
Subarray requested	NONE	NONE
Alternating exposures requested	N	N
[s] Primary exposure time	3.2	3.2

2.3 Star Slots

2.4 FID Slots

A Summary

A.1 Status

V&V Scientist	Joy Nichols
V&V Date (YYYY-MM-DD)	2013.01.23
V&V Edition	1
V&V Disposition and Status	OK
V&V Charge Time	8.2108196069002

A.2 Comments