

V&V Reference Report

L2 ASCDS Version : 7.6.7.1

Observation 5383 - L2 Version 002
Chandra X-Ray Center

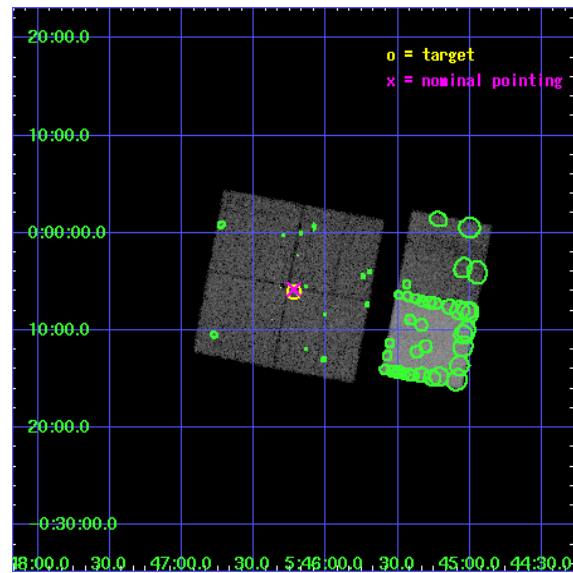
L2 Processing Date : Mar 20 2006

Contents

1	Front	2
2	OBI	3
2.1	OBI	3
2.1.1	Images	3
2.1.2	Bias	3
2.1.3	Parameters	4
2.1.4	Events	4
2.2	Compared Parameters	5
2.3	Aspect	6
2.4	Star Slots	9
2.4.1	Slot 3	9
2.4.2	Slot 4	10
2.4.3	Slot 5	11
2.4.4	Slot 6	12
2.4.5	Slot 7	13
2.5	FID Slots	14
2.5.1	Slot 0	14
2.5.2	Slot 1	15
2.5.3	Slot 2	16
3	Point Sources	17
A	Summary	18
A.1	Status	18
A.2	Comments	18

1 Front

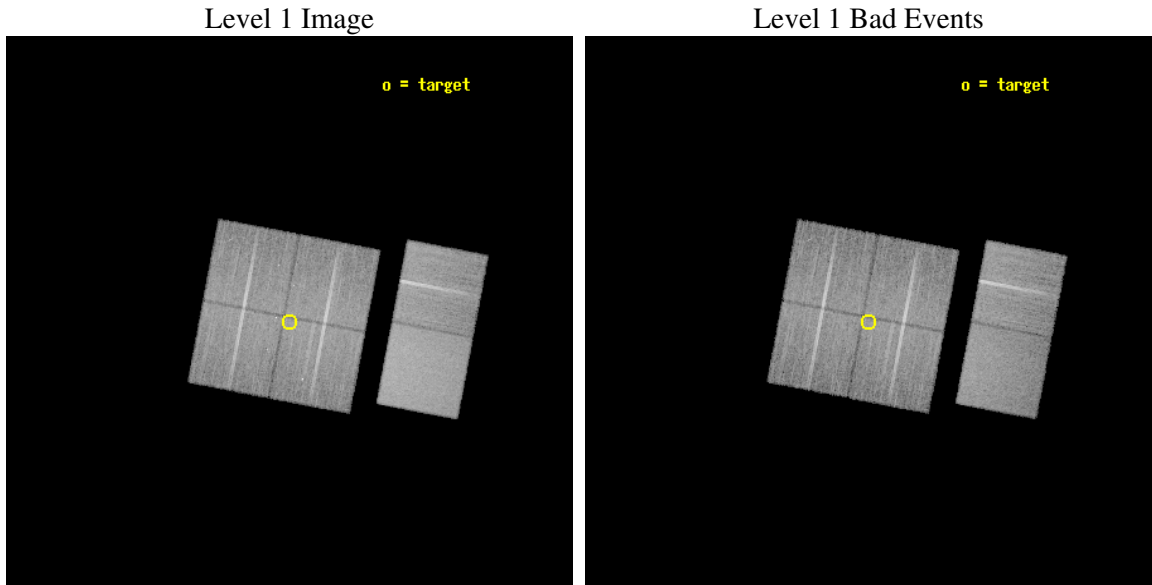
seq_num	200318
obs_id	5383
title	X-ray Imaging of McNeil's Star: Witnessing the Onset of an Accretion Burst
observer	Prof. Joel Kastner
object	IRAS05436-0007
dtcycle	0
cycle	P
ra_targ	86.554583
dec_targ	-0.101389
ra_nom	86.55554372925
dec_nom	-0.096860442627391
roll_nom	100.80551798358
revision	2
ontime	20134.399924994
livetime	19879.446029663
ontime0	20131.158934772
ontime1	20131.15895471
ontime2	20134.399924994
ontime3	20134.399924994
ontime6	20134.399924994
ontime7	20134.399924994
l2events	153578



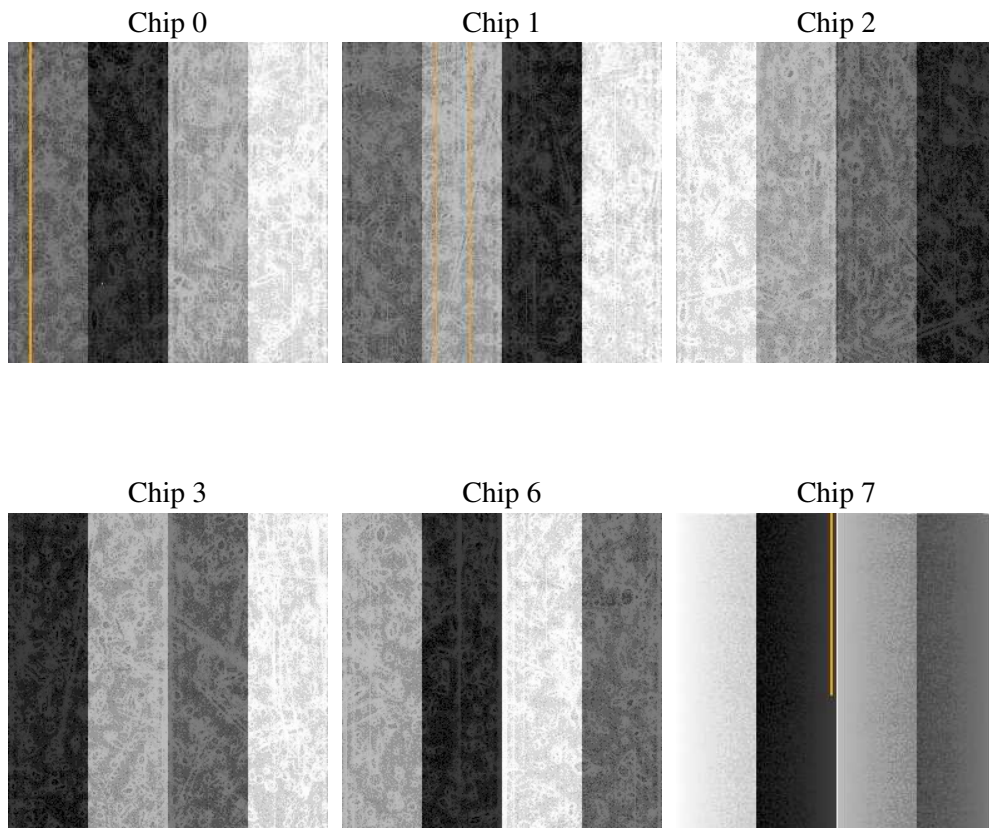
2 OBI

2.1 OBI

2.1.1 Images



2.1.2 Bias



2.1.3 Parameters

obi_num	3
ascdsver	7.6.7.1
caldsver	3.2.1
date	2006-03-20T17:30:59
revision	2

sched_exp_time	20000.000000
ontime	20415.069186777
ontime0	20411.828196555
ontime1	20411.828216493
ontime2	20415.069186777
ontime3	20415.069186777
ontime6	20415.069186777
ontime7	20415.069186777
l1events	938764

2.1.4 Events

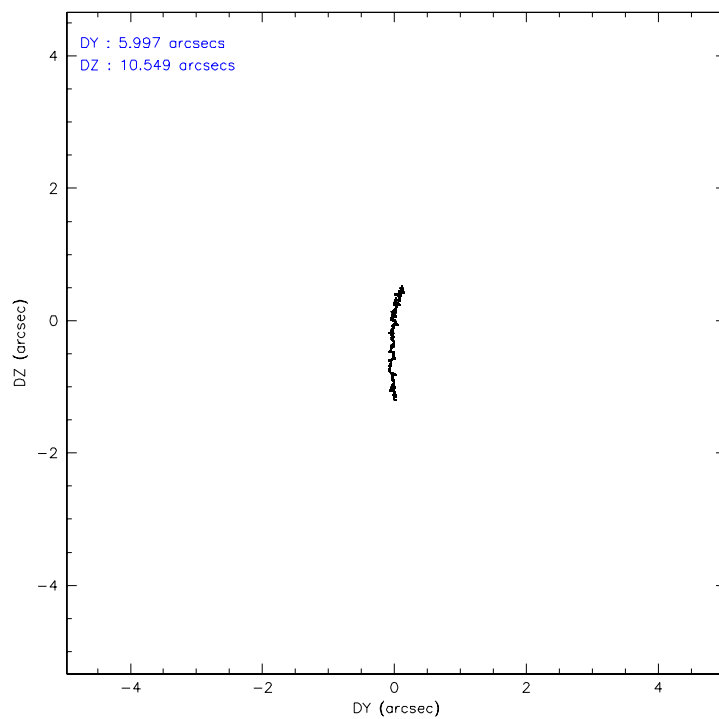
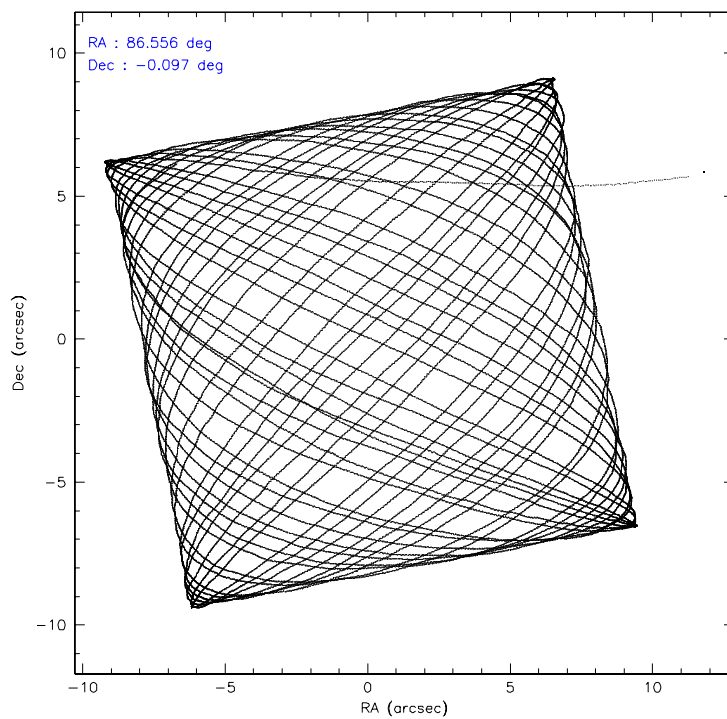
	ccd 0	ccd 1	ccd 2	ccd 3	ccd 6	ccd 7
level 1 events	139722	141931	146204	145202	159689	206016
rejected events	121562	122417	128231	126683	141398	130412
rejected %	87%	86%	87%	87%	88%	63%

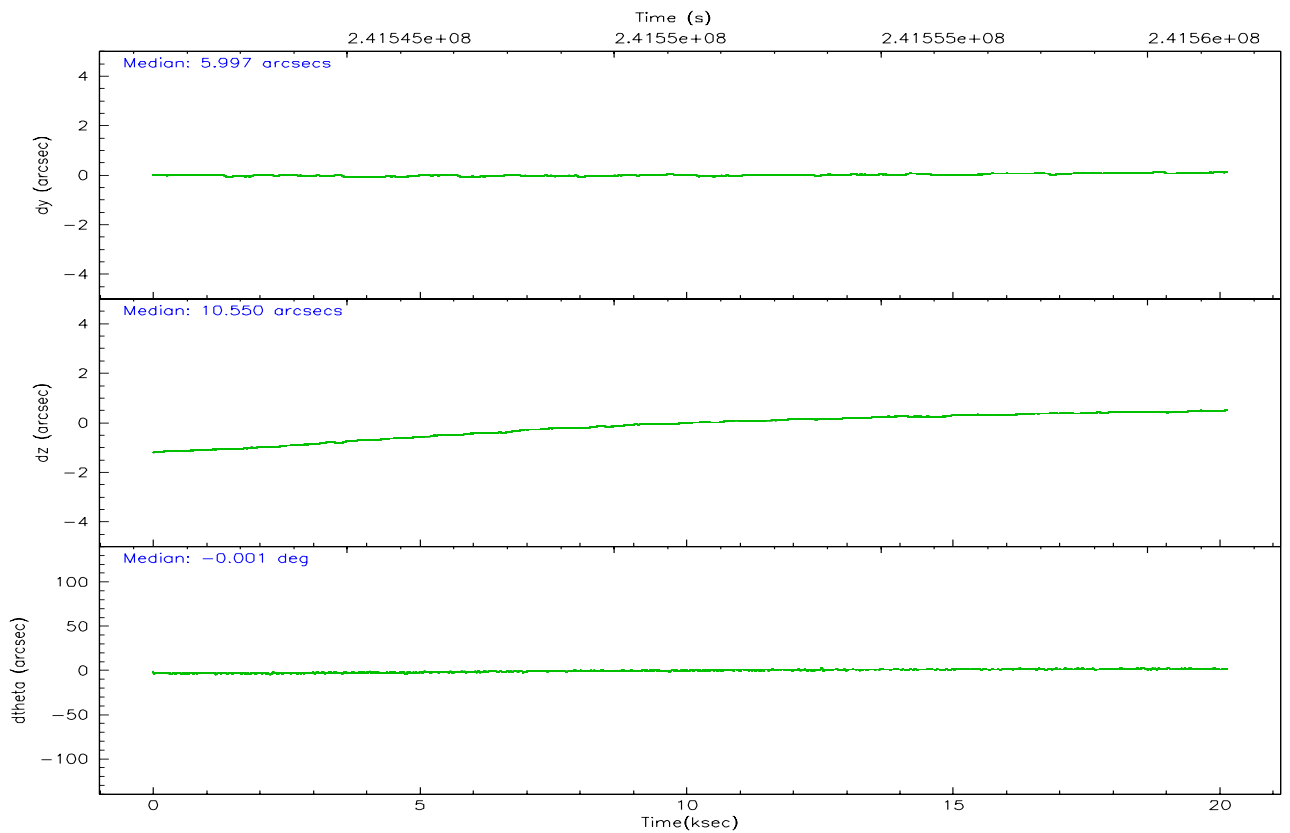
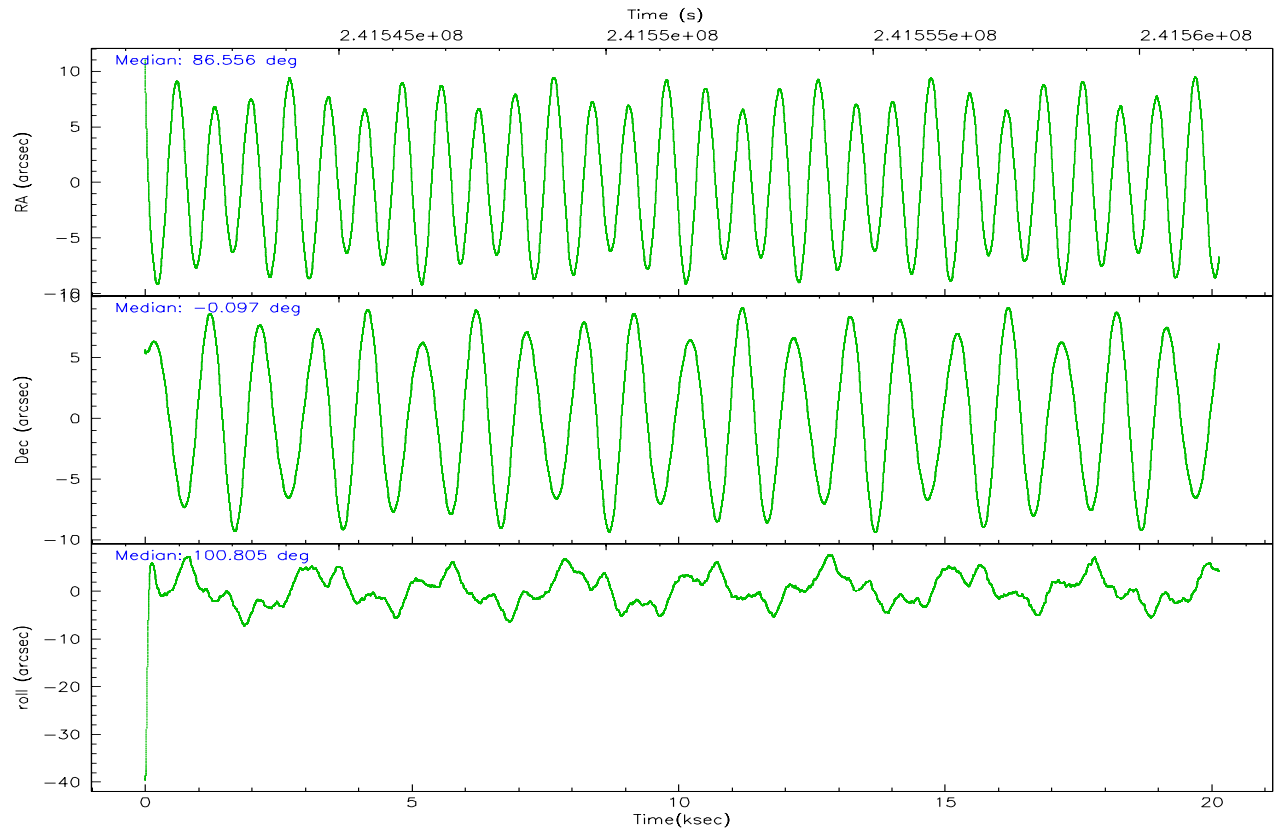
	ccd 0	ccd 1	ccd 2	ccd 3	ccd 6	ccd 7
grade 0 events	7776	7489	8150	8178	6979	3788
	5%	5%	5%	5%	4%	1%
grade 1 events	89	81	97	106	75	130
	0%	0%	0%	0%	0%	0%
grade 2 events	4137	4591	3750	3735	4171	19095
	2%	3%	2%	2%	2%	9%
grade 3 events	1663	1883	1680	1761	1744	3551
	1%	1%	1%	1%	1%	1%
grade 4 events	1614	1869	1629	1738	1704	3499
	1%	1%	1%	1%	1%	1%
grade 5 events	6017	6222	5795	6561	7098	12767
	4%	4%	3%	4%	4%	6%
grade 6 events	3240	3951	3004	3343	3944	46690
	2%	2%	2%	2%	2%	22%
grade 7 events	115186	115845	122099	119780	133974	116496
	82%	81%	83%	82%	83%	56%

2.2 Compared Parameters

Parameter	Planned	Actual	Parameter	Planned	Actual
Instrument	ACIS	ACIS	Obspar format version number	6	6
Detector	ACIS-012367	ACIS-012367	Obspar file type	PREDICTED	ACTUAL
Grating	NONE	NONE	Obspar update status	NONE	UPDATED
Data mode	FAINT	FAINT	On-chip summing requested	N	N
Observation mode	POINTING	POINTING	Subarray requested	NONE	NONE
Pointing RA	86.573533	86.55554372924969	Alternating exposures requested	N	N
Pointing Dec	-0.117508	-0.09686044262739121	Primary exposure time	0.000000	3.2
Pointing Roll	100.596906	100.8055179835809			
SIM focus pos (mm)	-0.782348	-0.7809083437167272			
SIM defocus (mm)	0	0.001439871863259334			
SIM translation stage pos (mm)	-233.592463	-233.5874344608287			
SIM translation stage offset (mm)	0	-0.005018542100998502			
Observation start time	241541496.184000	241540308.79993			
Observation start date	2005-08-27T14:50:32	2005-08-27T14:31:48			
Observation end time	241561496.184000	241562121.31343			
Observation end date	2005-08-27T20:23:52	2005-08-27T20:35:21			
Read mode	TIMED	TIMED			

2.3 Aspect



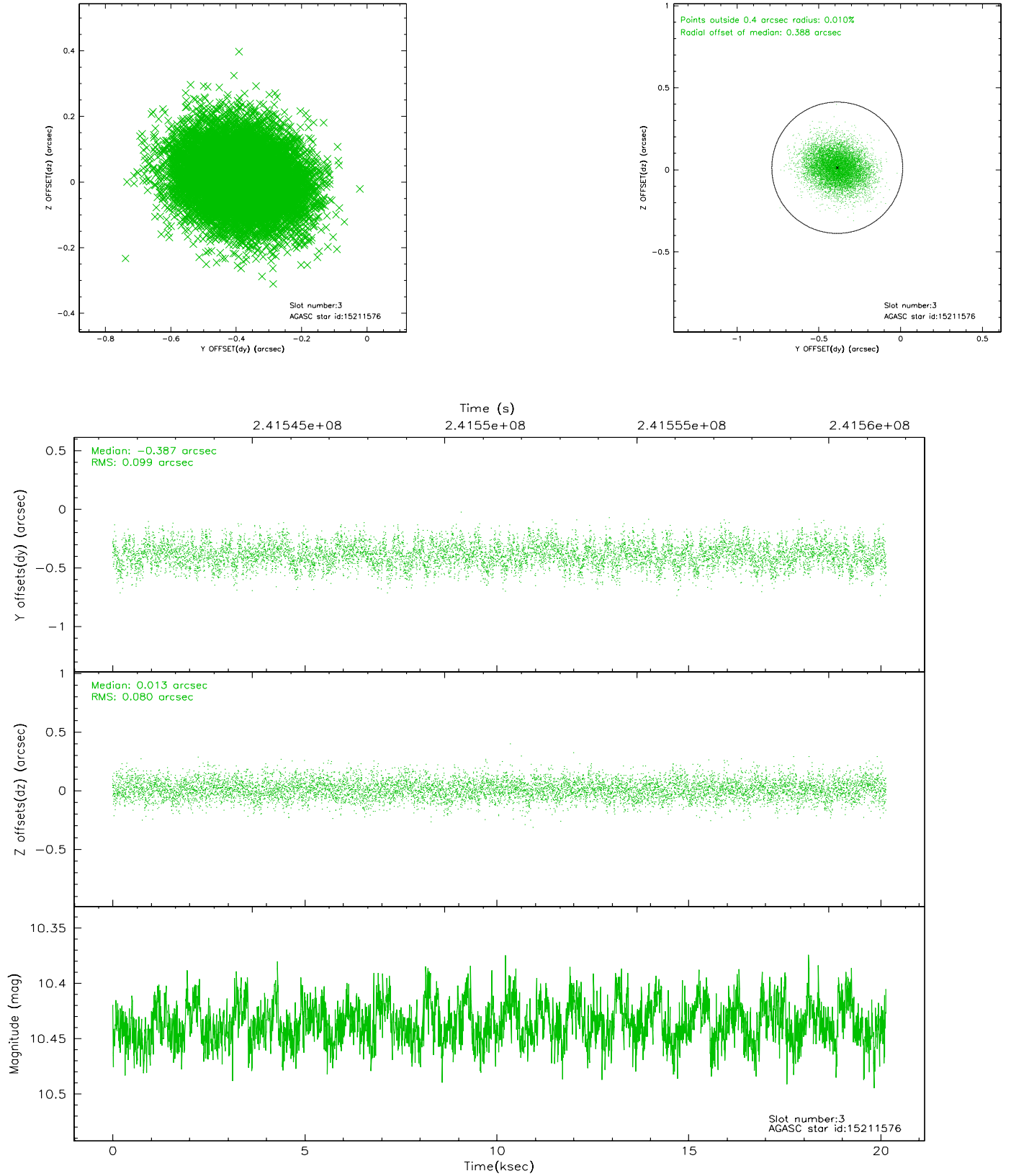


Slot Statistics

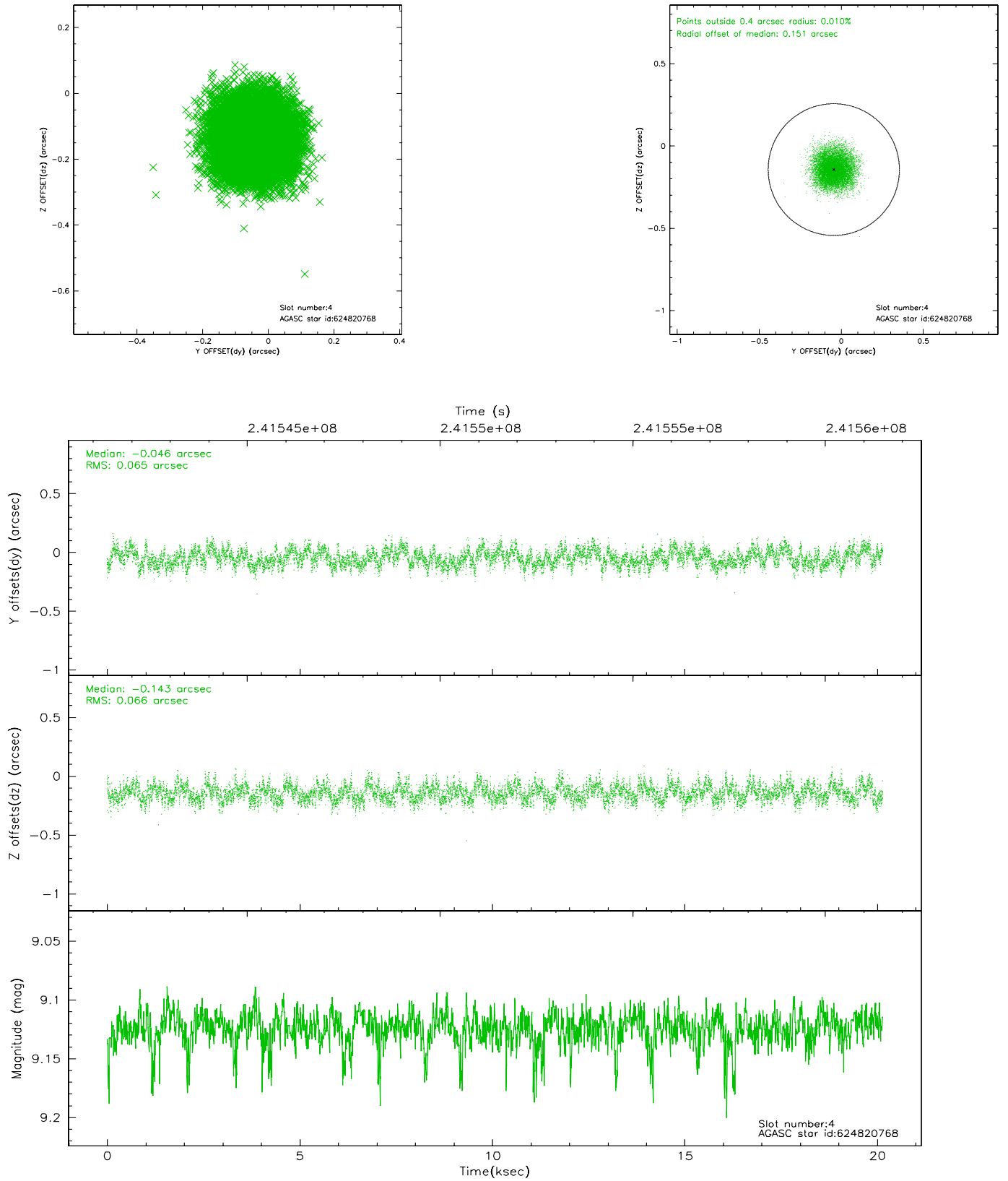
slot	status	id	mag	n_pts	med_dy	med_dz	dr1	dr2	ra	dec	mean_y	mean_z
0	FID	ACIS-I-1	7.24	4912	0.004	0.017	0.022	0.048	0.000000	0.000000	933.70	-833.86
1	FID	ACIS-I-5	7.23	4913	-0.133	0.033	0.012	0.018	0.000000	0.000000	-1814.43	1063.56
2	FID	ACIS-I-6	7.26	4913	0.038	0.018	0.015	0.033	0.000000	0.000000	399.10	1708.24
3	GUIDE	15211576	10.44	9821	-0.387	0.013	0.137	0.219	86.250116	0.372772	1948.69	820.09
4	GUIDE	624820768	9.12	9820	-0.046	-0.143	0.101	0.156	86.202480	-0.061953	442.44	1276.36
5	GUIDE	624954088	9.59	9752	0.160	-0.136	0.100	0.163	86.606399	-0.671650	-1982.37	250.76
6	GUIDE	624954400	9.16	9821	0.202	0.096	0.074	0.120	86.607838	-0.762568	-2305.27	305.99
7	GUIDE	624955288	9.59	9817	0.073	0.166	0.089	0.143	87.070368	-0.669957	-2283.98	-1391.93

2.4 Star Slots

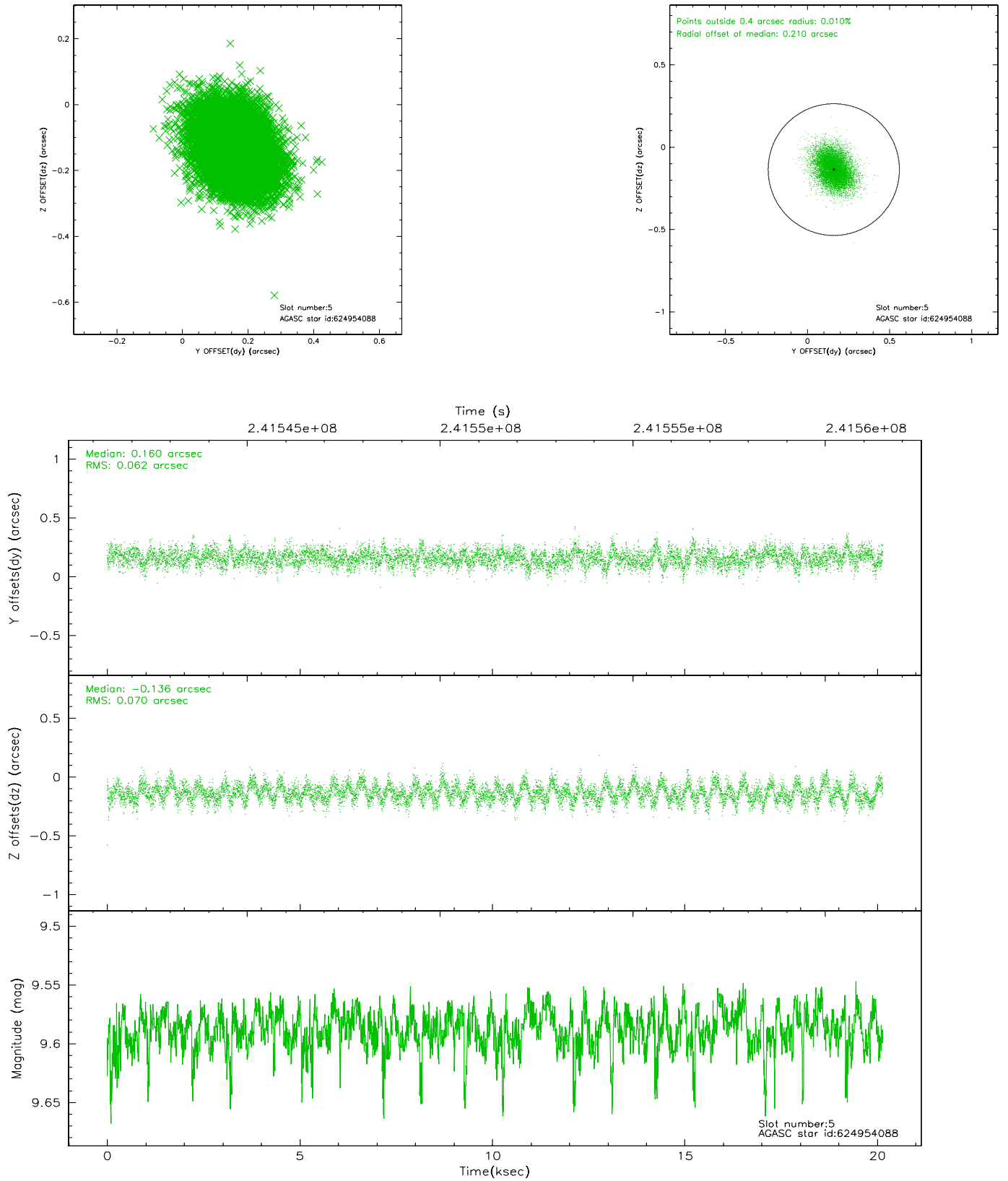
2.4.1 Slot 3



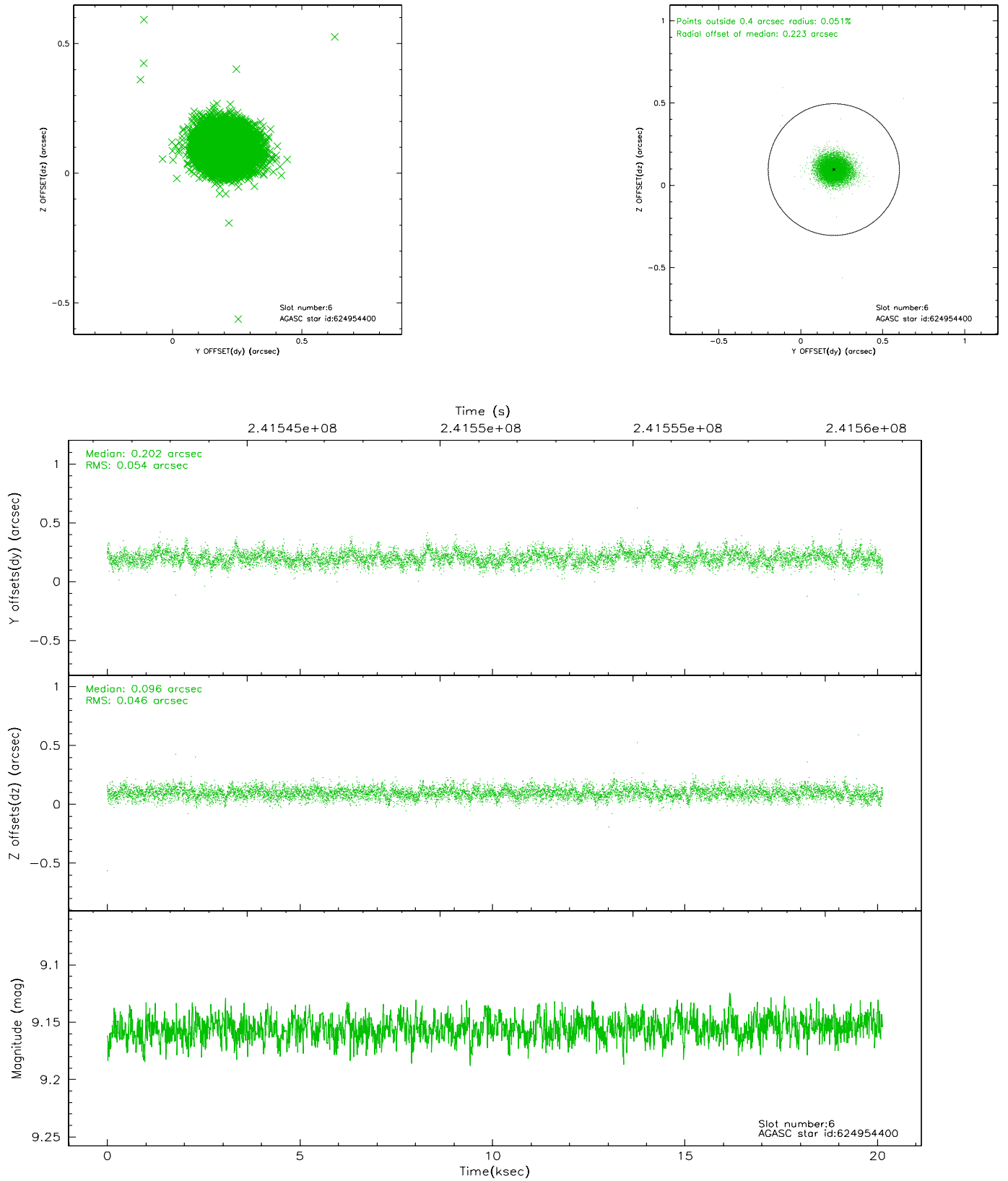
2.4.2 Slot 4



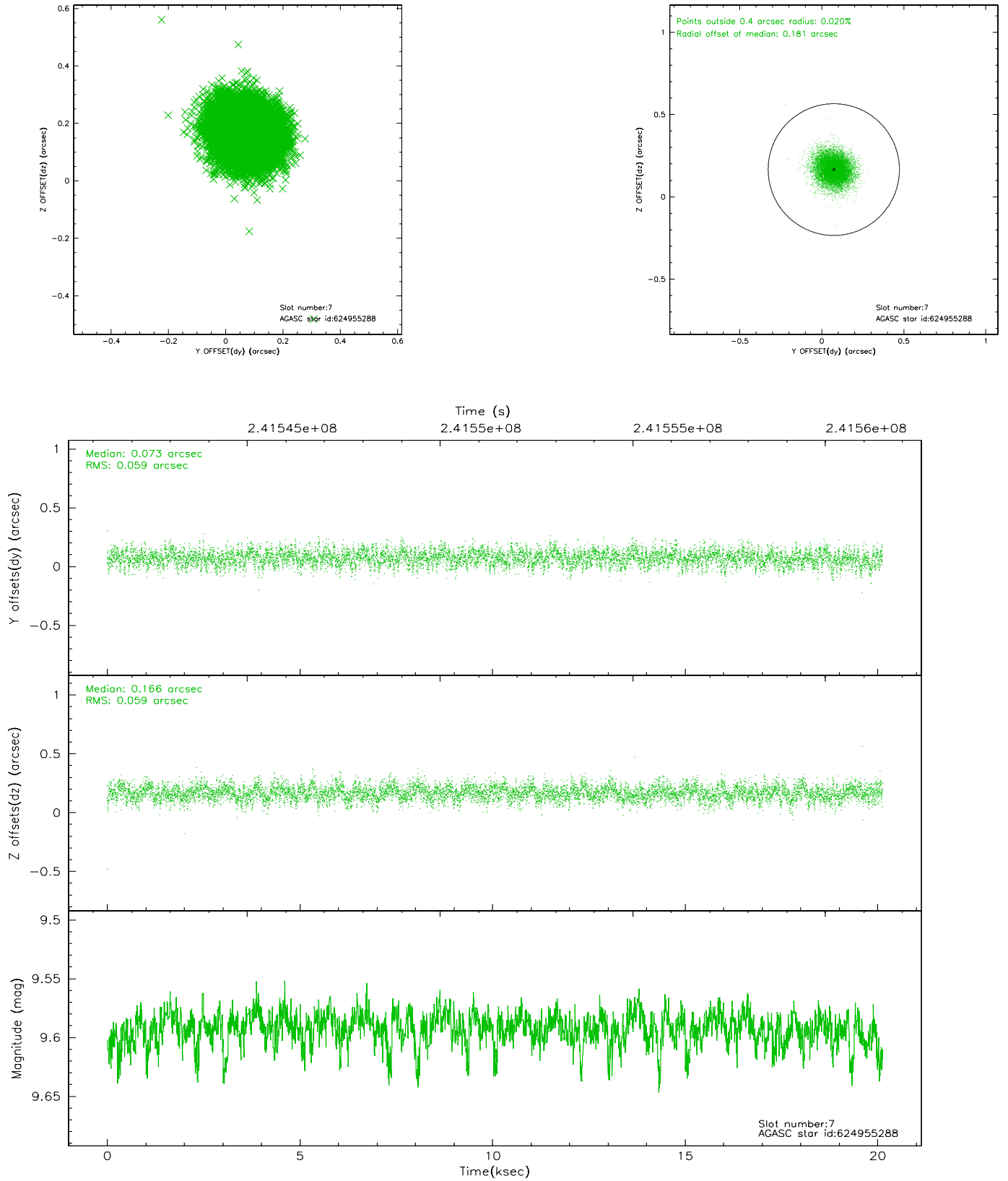
2.4.3 Slot 5



2.4.4 Slot 6

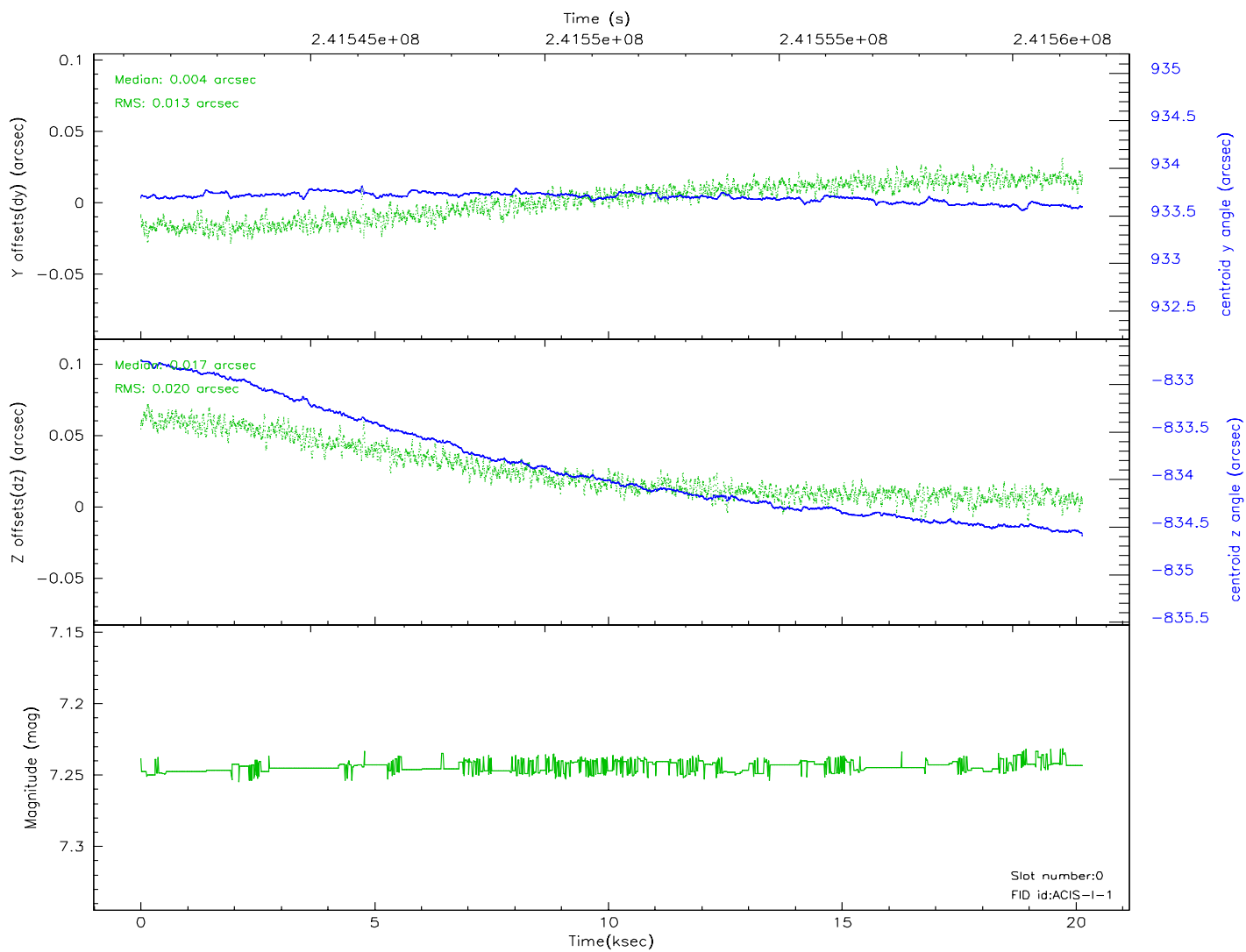
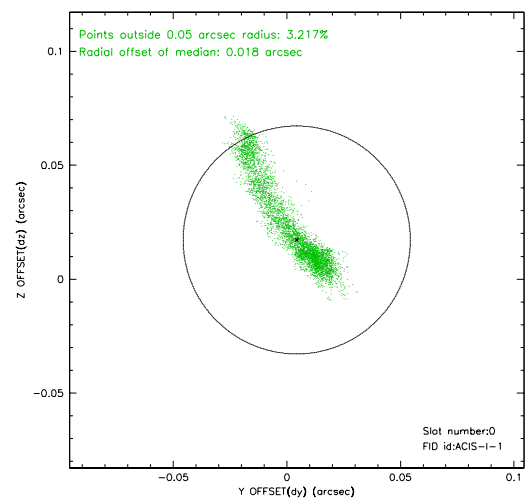
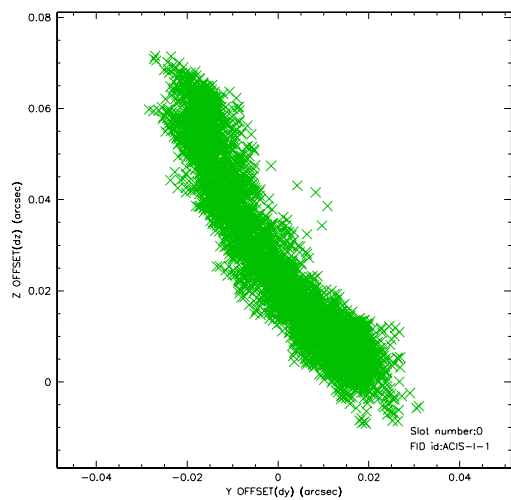


2.4.5 Slot 7

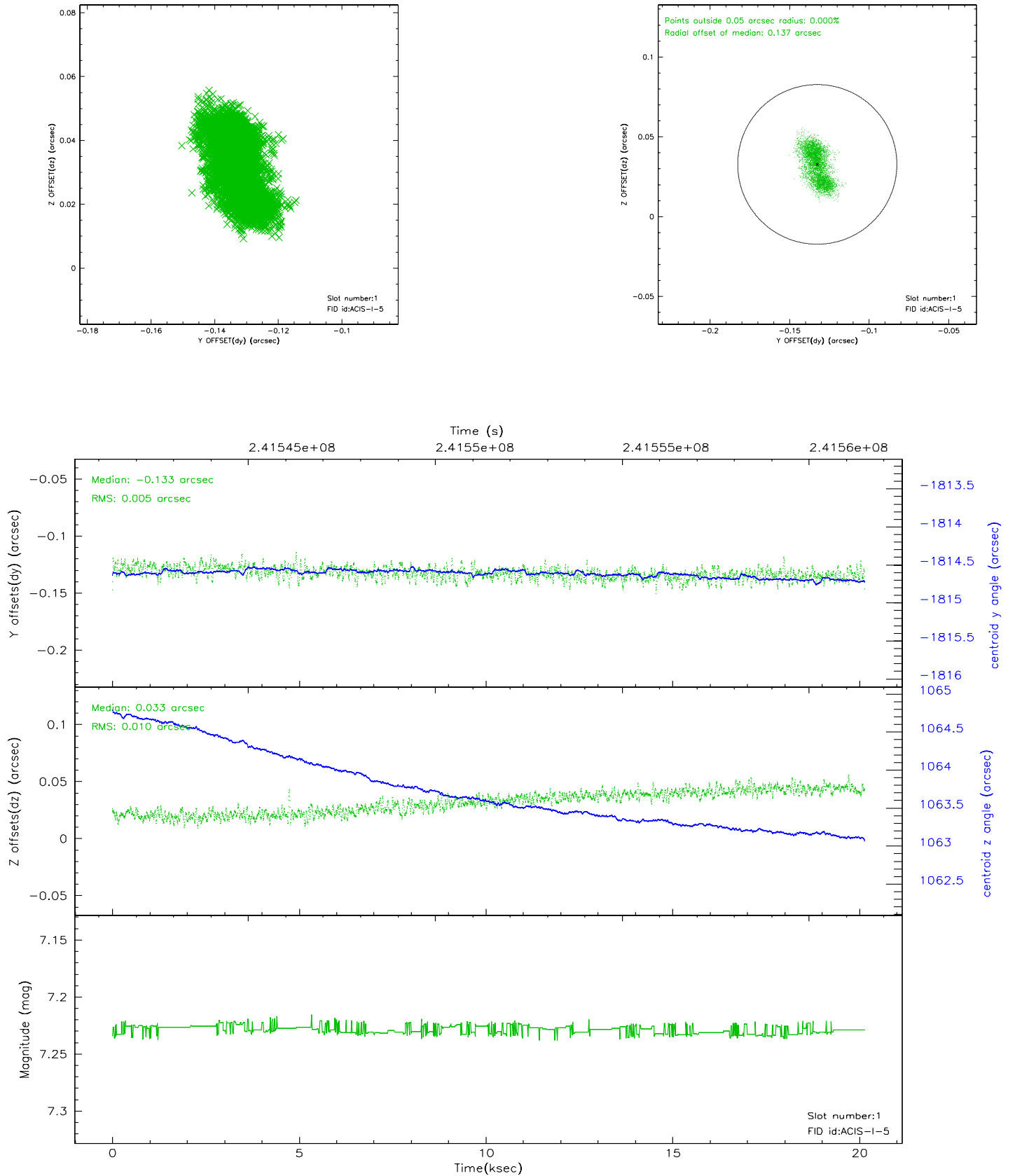


2.5 FID Slots

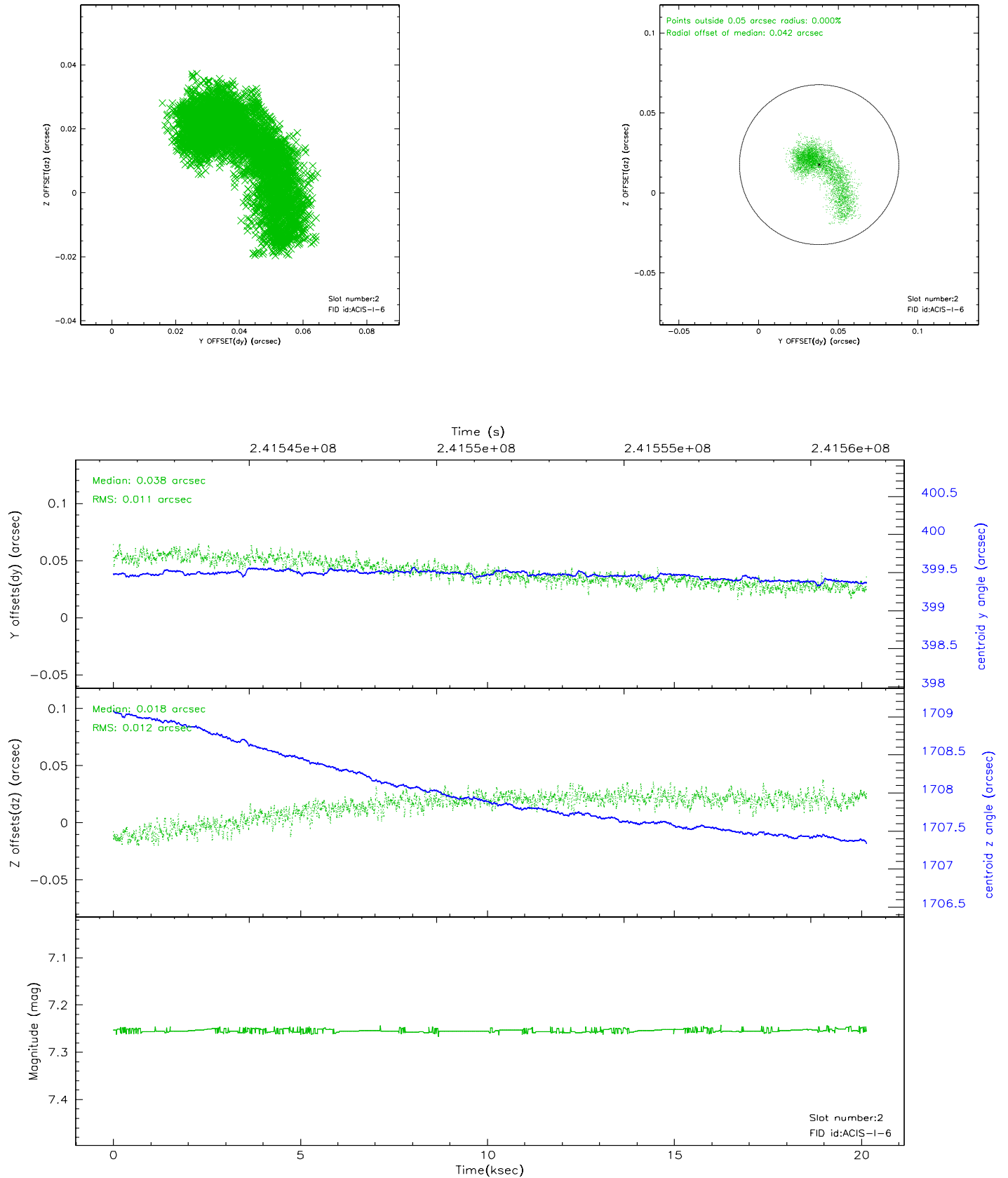
2.5.1 Slot 0



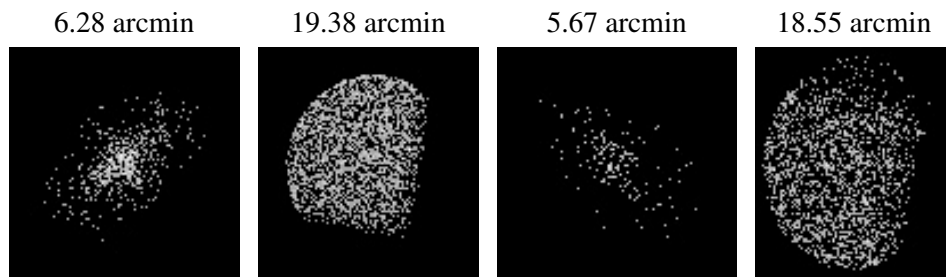
2.5.2 Slot 1



2.5.3 Slot 2



3 Point Sources



A Summary

A.1 Status

V&V Scientist	Jen Lauer
V&V Date (YYYY-MM-DD)	2006.03.20
V&V Edition	1
V&V Disposition and Status	OK
V&V Charge Time	20.13439

A.2 Comments

Window constraint met.