

V&V Reference Report

L2 ASCDS Version : 10

Observation 53503 - L2 Version 1
Chandra X-Ray Center

L2 Processing Date : Aug 4 2013

Contents

1	Front	2
2	OBI	3
2.1	OBI	3
2.1.1	Images	3
2.1.2	Bias	3
2.1.3	Parameters	4
2.1.4	Events	4
2.2	Compared Parameters	5
2.3	Star Slots	6
2.4	FID Slots	6
A	Summary	7
A.1	Status	7
A.2	Comments	7

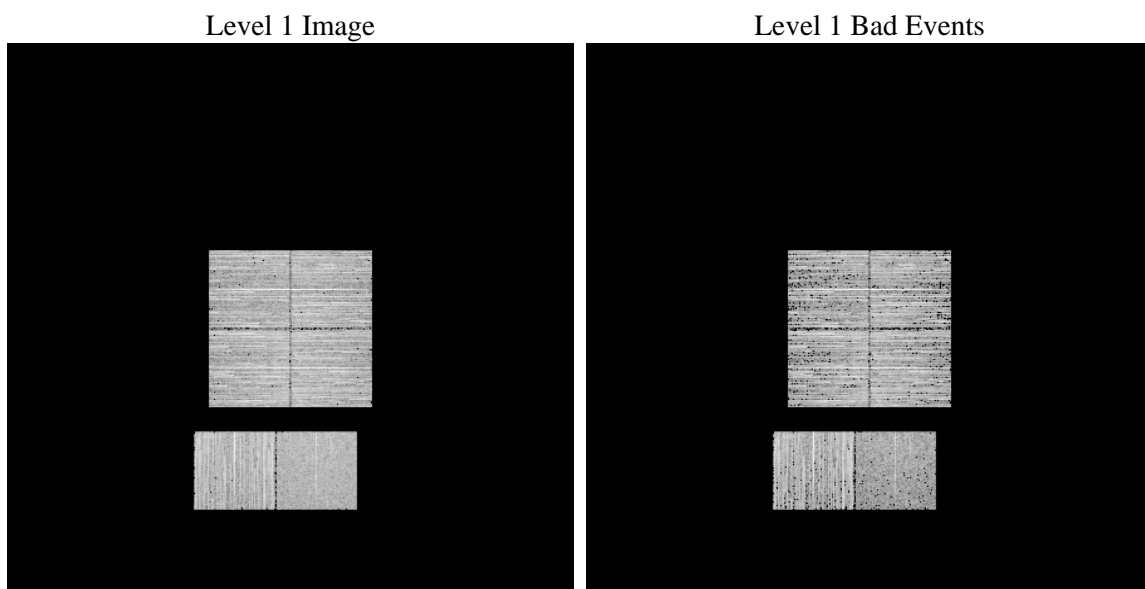
1 Front

seq_num	 	Sequence number
obs_id	53503	Observation id
title	ACIS-012367 diagnostics	Proposal title
observer	CHANDRA engineering request/realtime commanding	Principal investig
object	 	Source name
dtcycle	0	
cycle	P	events from which exps? Prim/Second/Both
ra_targ	0.0	Observer's specified target RA [deg]
dec_targ	0.0	Observer's specified target Dec [deg]
ra_nom	3.2596684310255	Nominal RA [deg]
dec_nom	-0.66076878837135	Nominal Dec [deg]
roll_nom	111.93800598361	Nominal Roll [deg]
revision	1	Processing version of data
ontime	3288.6714077592	Sum of GTIs [s]
livetime	3247.028270194	Livetime [s]
ontime0	3288.6303677559	Sum of GTIs [s]
ontime1	3288.5893277526	Sum of GTIs [s]
ontime2	3288.5482877493	Sum of GTIs [s]
ontime3	3288.7124477625	Sum of GTIs [s]
ontime6	3288.507247746	Sum of GTIs [s]
ontime7	3288.6714077592	Sum of GTIs [s]
l2events	79679	Number of level 2 events

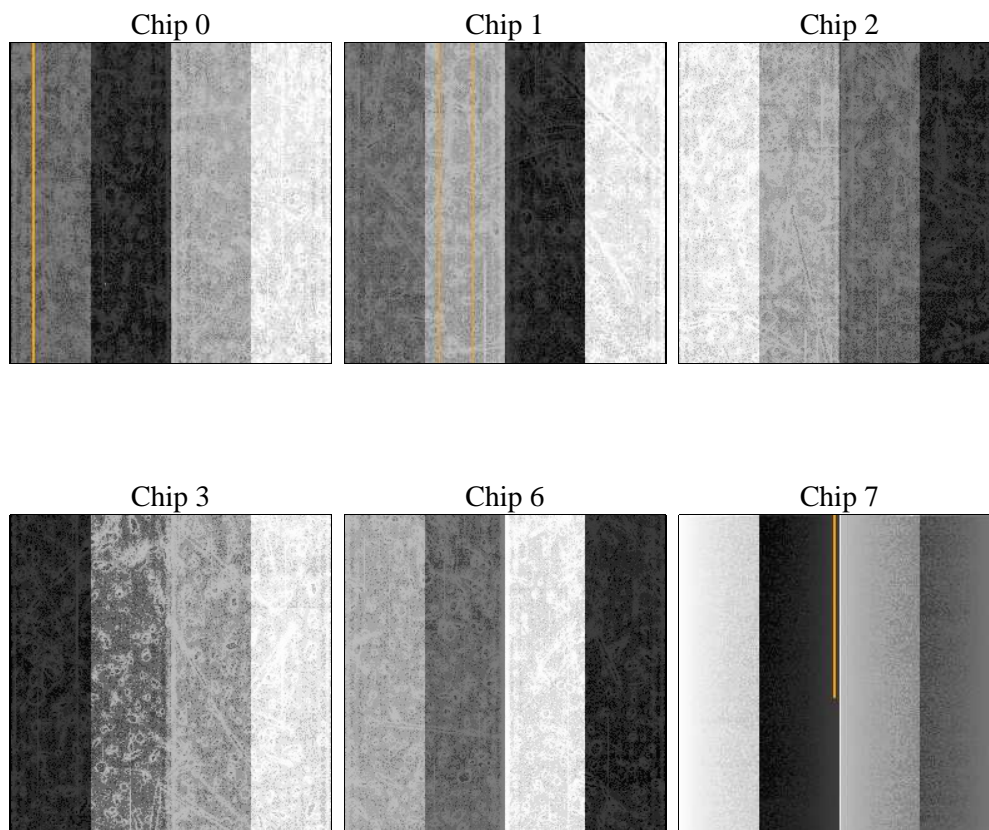
2 OBI

2.1 OBI

2.1.1 Images



2.1.2 Bias



2.1.3 Parameters

obi_num	0	Obi number	sched_exp_time	0.0	[s] Scheduled observation exposure time
ascdsver	10	Processing system revision	ontime	3288.6714077592	Sum of GTIs [s]
caldbver	4.5.7	 	ontime0	3288.6303677559	Sum of GTIs [s]
date	2013-08-04T12:23:16	Date and time of file creation	ontime1	3288.5893277526	Sum of GTIs [s]
revision	1	Processing version of data	ontime2	3288.5482877493	Sum of GTIs [s]
			ontime3	3288.7124477625	Sum of GTIs [s]
			ontime6	3288.507247746	Sum of GTIs [s]
			ontime7	3288.6714077592	Sum of GTIs [s]
			l1events	345708	Number of level 1 events

2.1.4 Events

	ccd 0	ccd 1	ccd 2	ccd 3	ccd 6	ccd 7		ccd 0	ccd 1	ccd 2	ccd 3	ccd 6	ccd 7
level 1 events	54289	58943	60651	60542	62055	49228	grade 0 events	6217	6154	6321	6381	6238	3177
rejected events	41984	46504	48314	48205	49295	26814		11%	10%	10%	10%	10%	6%
rejected %	77%	78%	79%	79%	79%	54%	grade 1 events	45	27	32	39	26	33
								0%	0%	0%	0%	0%	0%
							grade 2 events	2469	2511	2446	2315	2564	5556
								4%	4%	4%	3%	4%	11%
							grade 3 events	864	867	867	854	878	1878
								1%	1%	1%	1%	1%	3%
							grade 4 events	856	806	813	931	840	1822
								1%	1%	1%	1%	1%	3%
							grade 5 events	1174	1103	1072	1185	1195	2994
								2%	1%	1%	1%	1%	6%
							grade 6 events	1899	2101	1890	1856	2240	9981
								3%	3%	3%	3%	3%	20%
							grade 7 events	40765	45374	47210	46981	48074	23787
								75%	76%	77%	77%	77%	48%

2.2 Compared Parameters

Parameter	Planned	Actual	Parameter	Planned	Actual
Instrument	ACIS	ACIS	Obspar format version number	7	7
Detector	ACIS-012367	ACIS-012367	Obspar file type	PREDICTED	ACTUAL
Grating	NONE	NONE	Obspar update status	NONE	UPDATED
Data mode	FAINT	FAINT	Number of optional ACIS chips dropped	0	0
Observation mode	SECONDARY	SECONDARY	On-chip summing requested	N	N
[deg] Pointing RA	0	3.259668431025489	Subarray requested	NONE	NONE
[deg] Pointing Dec	0	-0.6607687883713472	Alternating exposures requested	N	N
[deg] Pointing Roll	0.0	111.9380059836149	[s] Primary exposure time	3.2	3.2
[mm] SIM focus pos	-1.429586	-1.428180813131781			
[mm] SIM defocus	0.1037507710433287	0.1051558262725154			
[mm] SIM translation stage pos	250.455976	250.4635187648994			
[mm] SIM translation stage offset	0	-0.007540371344731511			
[s] Observation start time (MET)	491929423.333249	491929422.30825			
Observation start date	2013-08-03T15:03:43	2013-08-03T15:03:42			
[s] Observation end time (MET)	491936866.883655	491936865.85865			
Observation end date	2013-08-03T17:07:47	2013-08-03T17:07:45			
Read mode	TIMED	TIMED			

2.3 Star Slots

2.4 FID Slots

A Summary

A.1 Status

V&V Scientist	Joy Nichols
V&V Date (YYYY-MM-DD)	2013.08.05
V&V Edition	1
V&V Disposition and Status	OK
V&V Charge Time	3.2886714077592

A.2 Comments