

V&V Reference Report

L2 ASCDS Version : 7.6.7.2

Observation 5133 - L2 Version 001
Chandra X-Ray Center

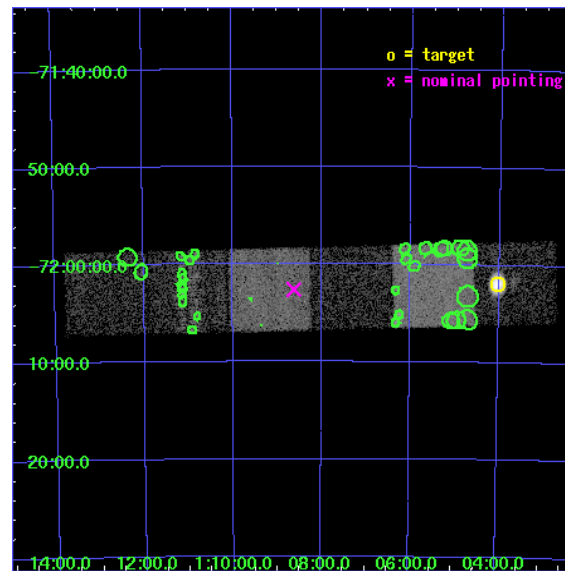
L2 Processing Date : May 25 2006

Contents

1	Front	2
2	OBI	3
2.1	OBI	3
2.1.1	Images	3
2.1.2	Bias	3
2.1.3	Parameters	4
2.1.4	Events	4
2.2	Compared Parameters	5
2.3	Aspect	6
2.4	Star Slots	9
2.4.1	Slot 3	9
2.4.2	Slot 4	10
2.4.3	Slot 5	11
2.4.4	Slot 6	12
2.4.5	Slot 7	13
2.5	FID Slots	14
2.5.1	Slot 0	14
2.5.2	Slot 1	15
2.5.3	Slot 2	16
3	Point Sources	17
A	Summary	18
A.1	Status	18
A.2	Comments	18

1 Front

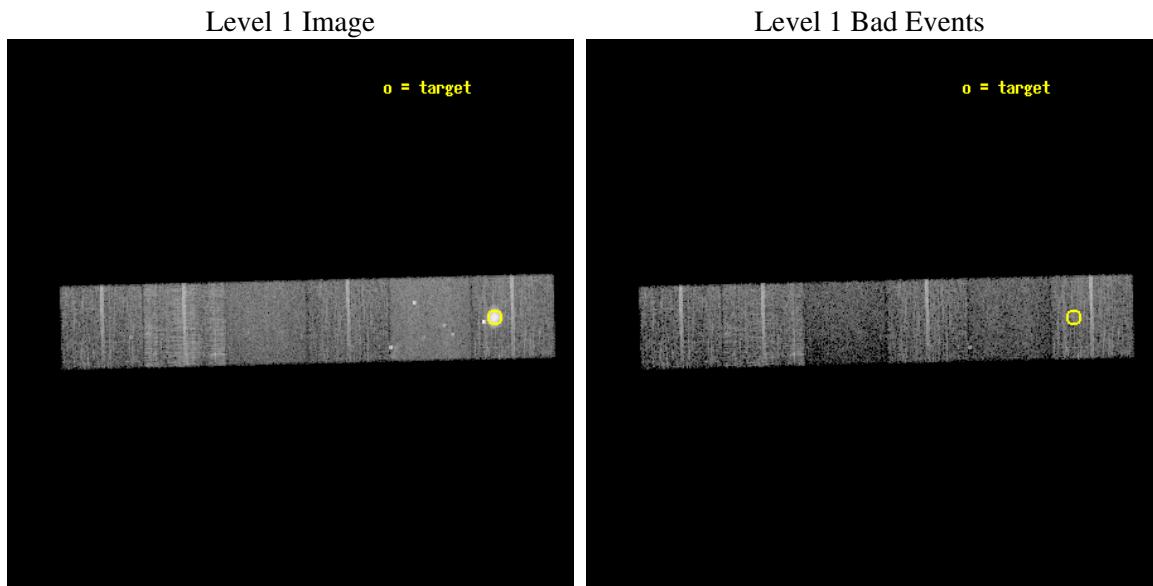
seq_num	590331
obs_id	5133
title	AO5B ACIS-S Calibration Observations of E0102-72
observer	Dr. CXC Calibration
object	E0102-72[S0,-120,21.44,0,0]
dtcycle	0
cycle	P
ra_targ	16.01
dec_targ	-72.032028
ra_nom	17.155137430657
dec_nom	-72.043559782411
roll_nom	178.56026721169
revision	2
ontime	7596.7999716997
livetime	7500.6047162143
ontime4	7596.7999716997
ontime5	7596.7999716997
ontime6	7596.7999716997
ontime7	7596.7999716997
ontime8	7590.3180311322
ontime9	7596.7999716997
l2events	76565



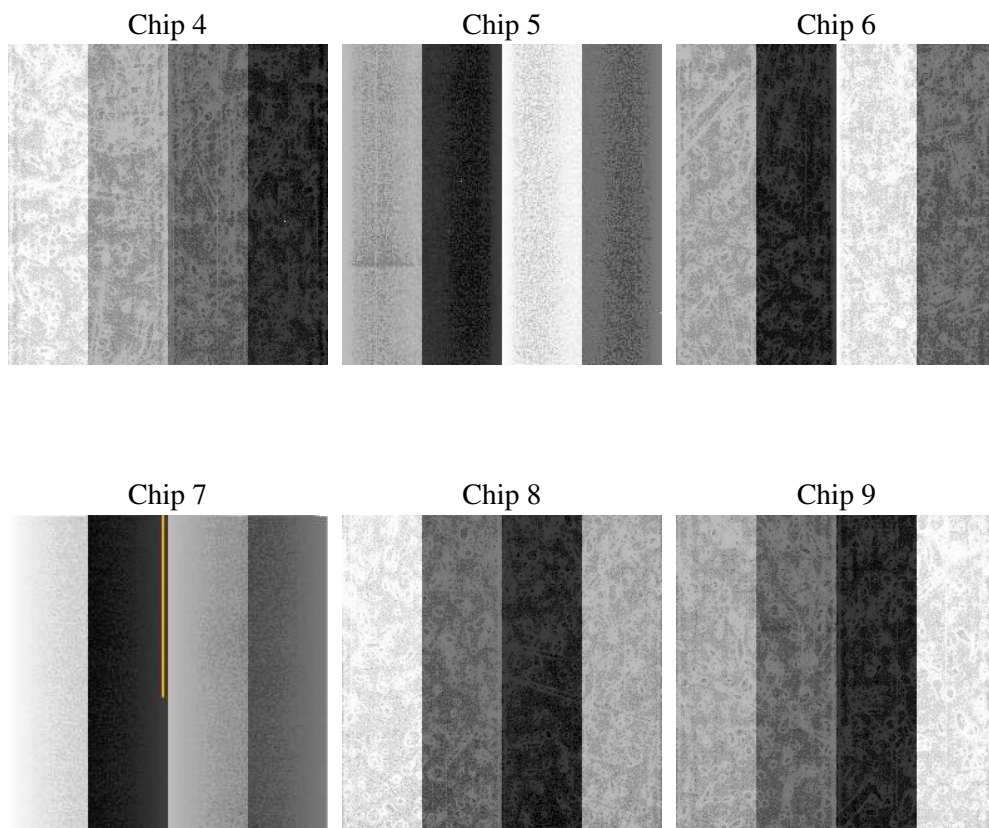
2 OBI

2.1 OBI

2.1.1 Images



2.1.2 Bias



2.1.3 Parameters

obi_num	0
ascdsver	7.6.7.2
caldbver	3.2.2
date	2006-05-25T08:10:21
revision	2

sched_exp_time	7840.000000
ontime	7603.3889647424
ontime4	7603.3889647424
ontime5	7603.3889647424
ontime6	7603.3889647424
ontime7	7603.3889647424
ontime8	7596.9070241749
ontime9	7603.3889647424
l1events	308778

2.1.4 Events

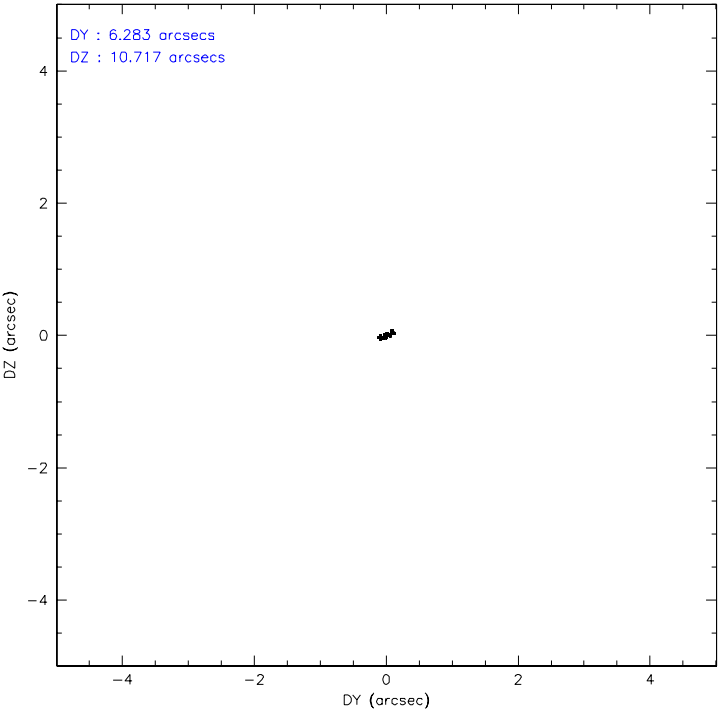
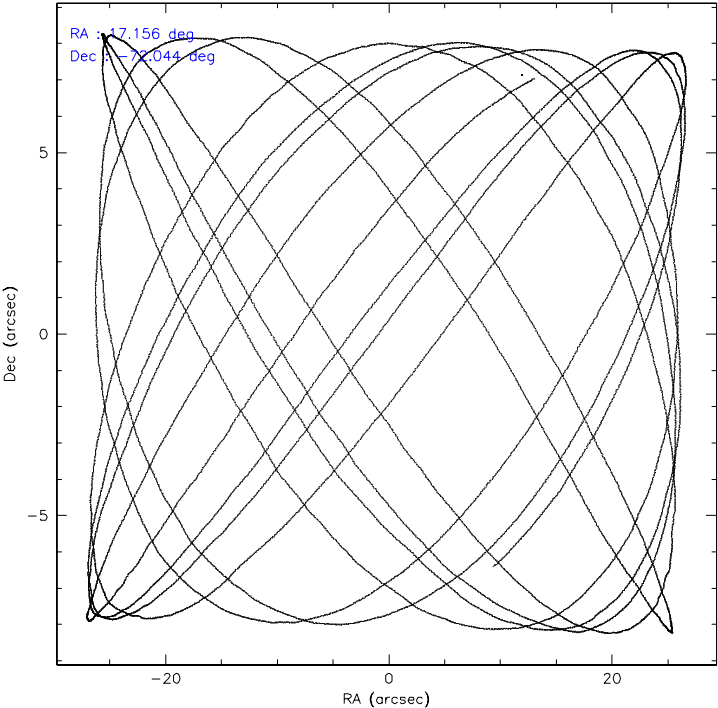
	ccd 4	ccd 5	ccd 6	ccd 7	ccd 8	ccd 9
level 1 events	68799	53646	42698	39918	63149	40568
rejected events	44565	25854	37943	21305	44423	35908
rejected %	64%	48%	88%	53%	70%	88%

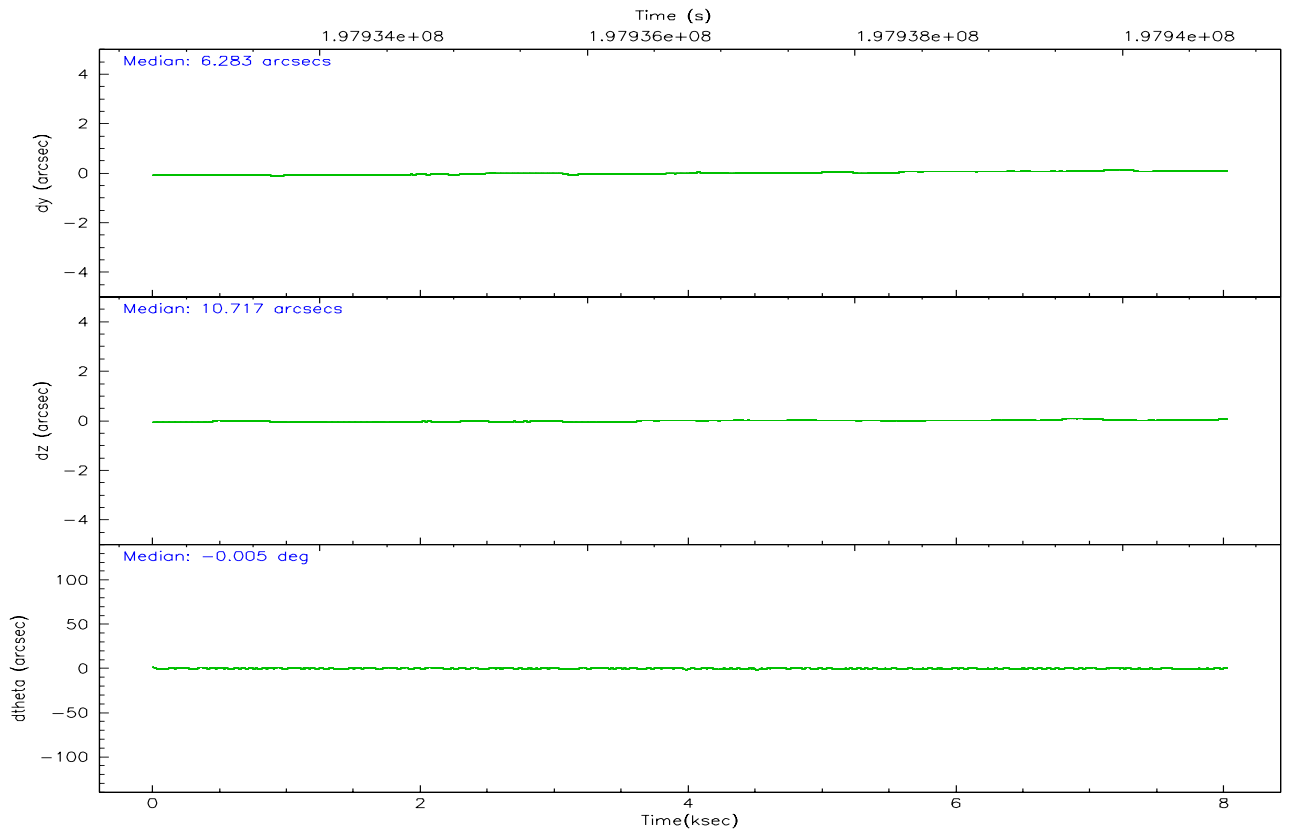
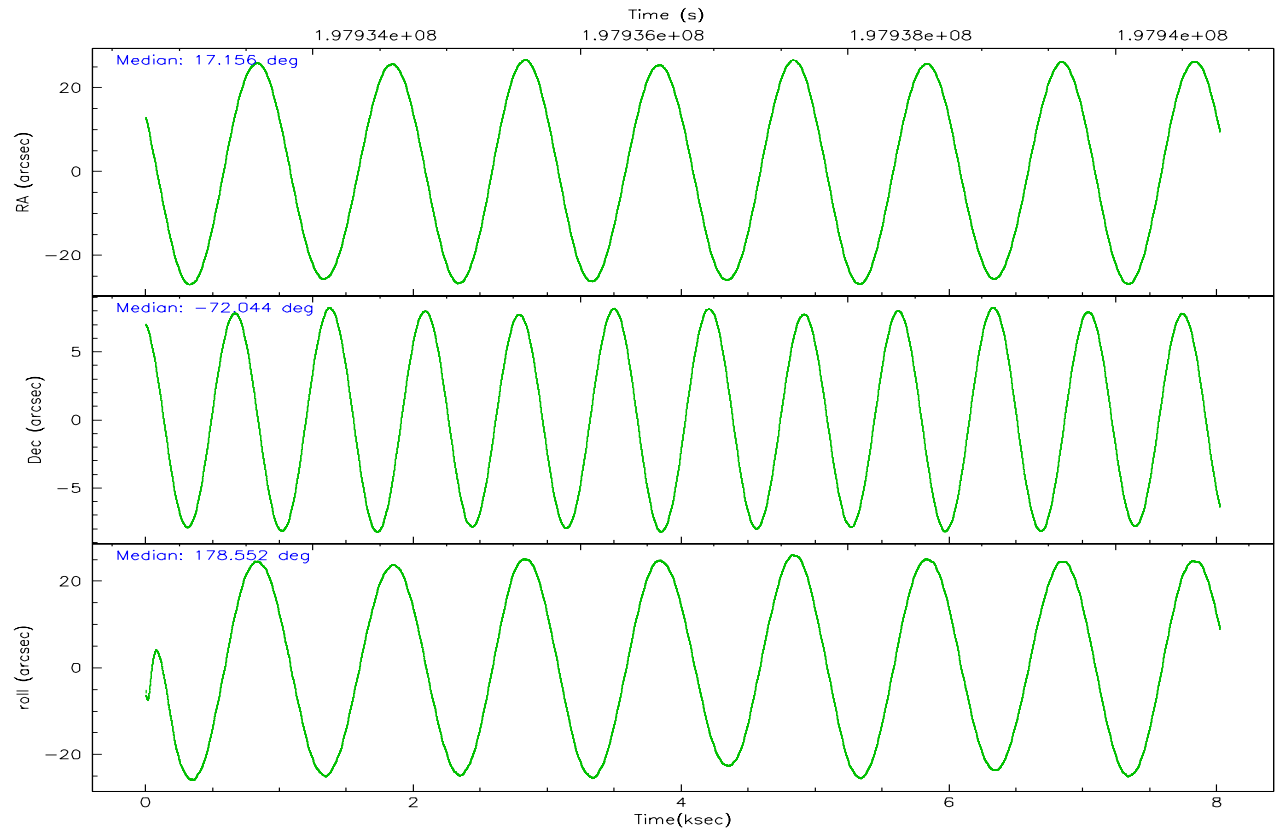
	ccd 4	ccd 5	ccd 6	ccd 7	ccd 8	ccd 9
grade 0 events	19939	3019	1821	1245	6202	1837
	28%	5%	4%	3%	9%	4%
grade 1 events	136	148	20	24	79	22
	0%	0%	0%	0%	0%	0%
grade 2 events	2080	8555	985	4750	3035	969
	3%	15%	2%	11%	4%	2%
grade 3 events	716	964	560	1151	2850	522
	1%	1%	1%	2%	4%	1%
grade 4 events	766	867	494	1134	2652	475
	1%	1%	1%	2%	4%	1%
grade 5 events	1431	2983	1412	3041	2059	1515
	2%	5%	3%	7%	3%	3%
grade 6 events	747	14408	898	10350	3996	860
	1%	26%	2%	25%	6%	2%
grade 7 events	42984	22702	36508	18223	42276	34368
	62%	42%	85%	45%	66%	84%

2.2 Compared Parameters

Parameter	Planned	Actual	Parameter	Planned	Actual
Instrument	ACIS	ACIS	Obspar format version number	6	6
Detector	ACIS-456789	ACIS-456789	Obspar file type	PREDICTED	ACTUAL
Grating	NONE	NONE	Obspar update status	NONE	UPDATED
Data mode	VFAINT	VFAINT	On-chip summing requested	N	N
Observation mode	POINTING	POINTING	Subarray requested	NONE	NONE
Pointing RA	17.232004	17.15513743065661	Alternating exposures requested	N	N
Pointing Dec	-72.030207	-72.04355978241131	Primary exposure time	0.000000	3.2
Pointing Roll	178.476762	178.5602672116875			
Window start time	197164864.184000	197164864.184000			
Window stop time	199670464.184000	199670464.184000			
SIM focus pos (mm)	-0.684267	-0.6828225247311905			
SIM defocus (mm)	0	0.001444936568705701			
SIM translation stage pos (mm)	-190.132523	-190.1400660498719			
SIM translation stage offset (mm)	0	0.00754346686406393			
Observation start time	197932937.184000	197932561.80063			
Observation start date	2004-04-09T21:21:13	2004-04-09T21:16:01			
Observation end time	197940777.184000	197940911.45099			
Observation end date	2004-04-09T23:31:53	2004-04-09T23:35:11			
Read mode	TIMED	TIMED			

2.3 Aspect



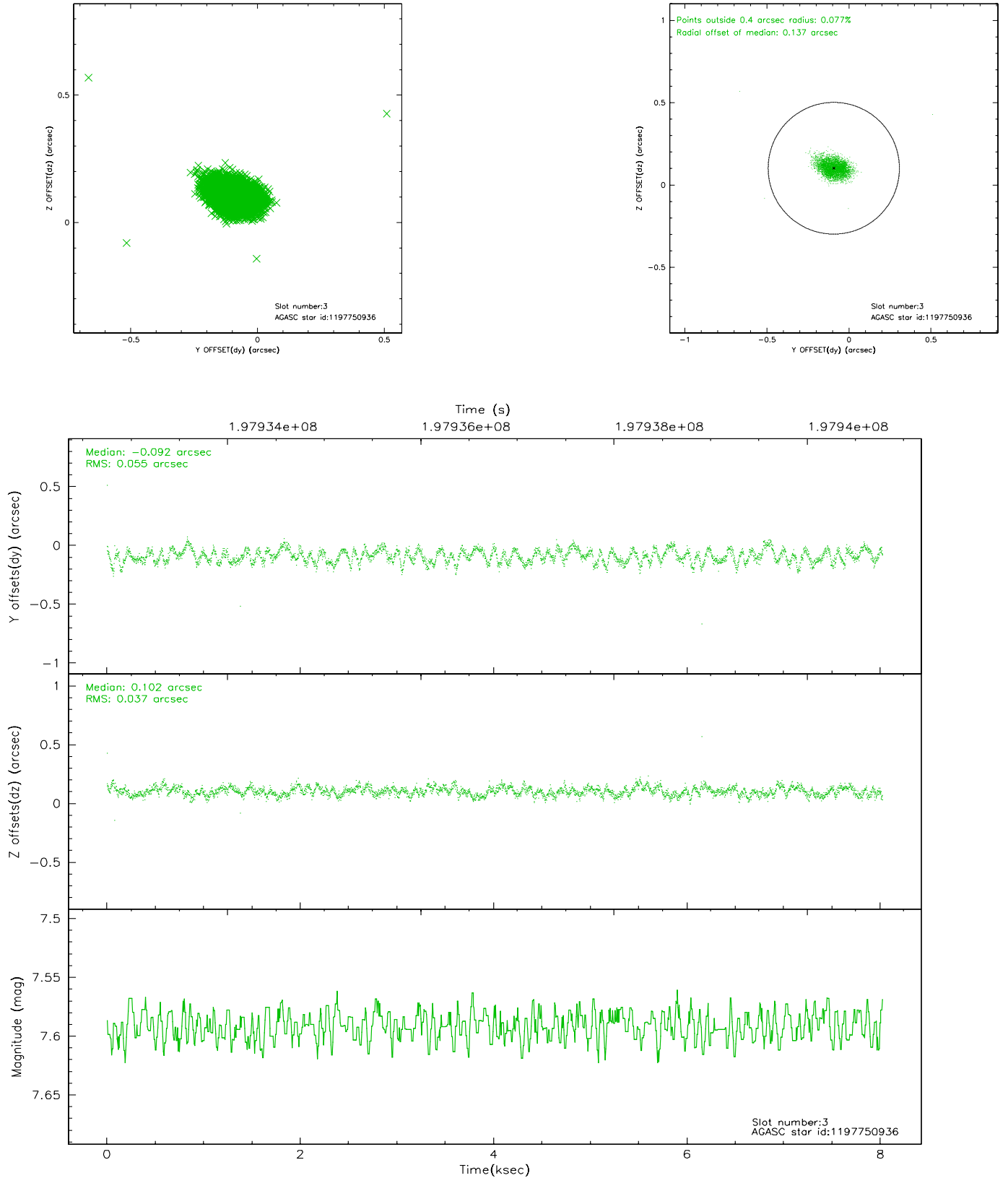


Slot Statistics

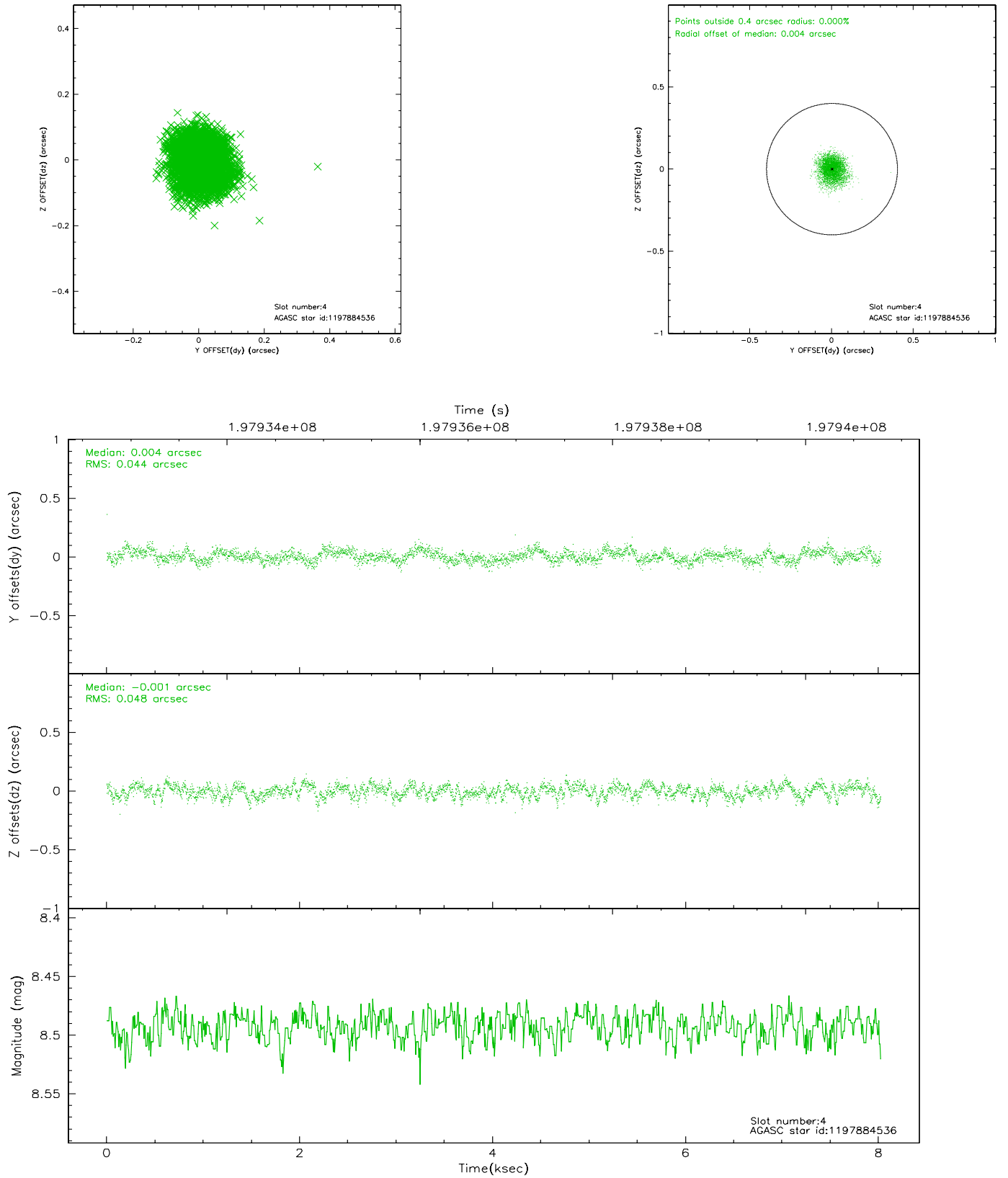
slot	status	id	mag	n_pts	med_dy	med_dz	dr1	dr2	ra	dec	mean_y	mean_z
0	FID	ACIS-S-2	7.10	1957	-0.051	0.009	0.006	0.011	0.000000	0.000000	-759.04	-1731.98
1	FID	ACIS-S-4	7.20	1957	0.041	0.022	0.005	0.009	0.000000	0.000000	2153.98	175.83
2	FID	ACIS-S-5	7.23	1957	-0.022	-0.023	0.006	0.010	0.000000	0.000000	-1810.98	170.20
3	GUIDE	1197750936	7.59	3914	-0.092	0.102	0.068	0.111	15.387940	-71.549550	2145.65	-1641.20
4	GUIDE	1197884536	8.49	3914	0.004	-0.001	0.069	0.111	17.160729	-71.835289	99.67	-699.63
5	GUIDE	1197884712	8.30	3912	-0.032	-0.116	0.063	0.099	16.087398	-72.252690	1234.17	845.96
6	GUIDE	1197885104	9.36	3911	0.135	-0.063	0.088	0.146	17.845067	-72.189368	-689.21	558.67
7	GUIDE	1197885328	7.23	3913	-0.012	0.080	0.052	0.082	16.283090	-71.733943	1098.35	-1029.07

2.4 Star Slots

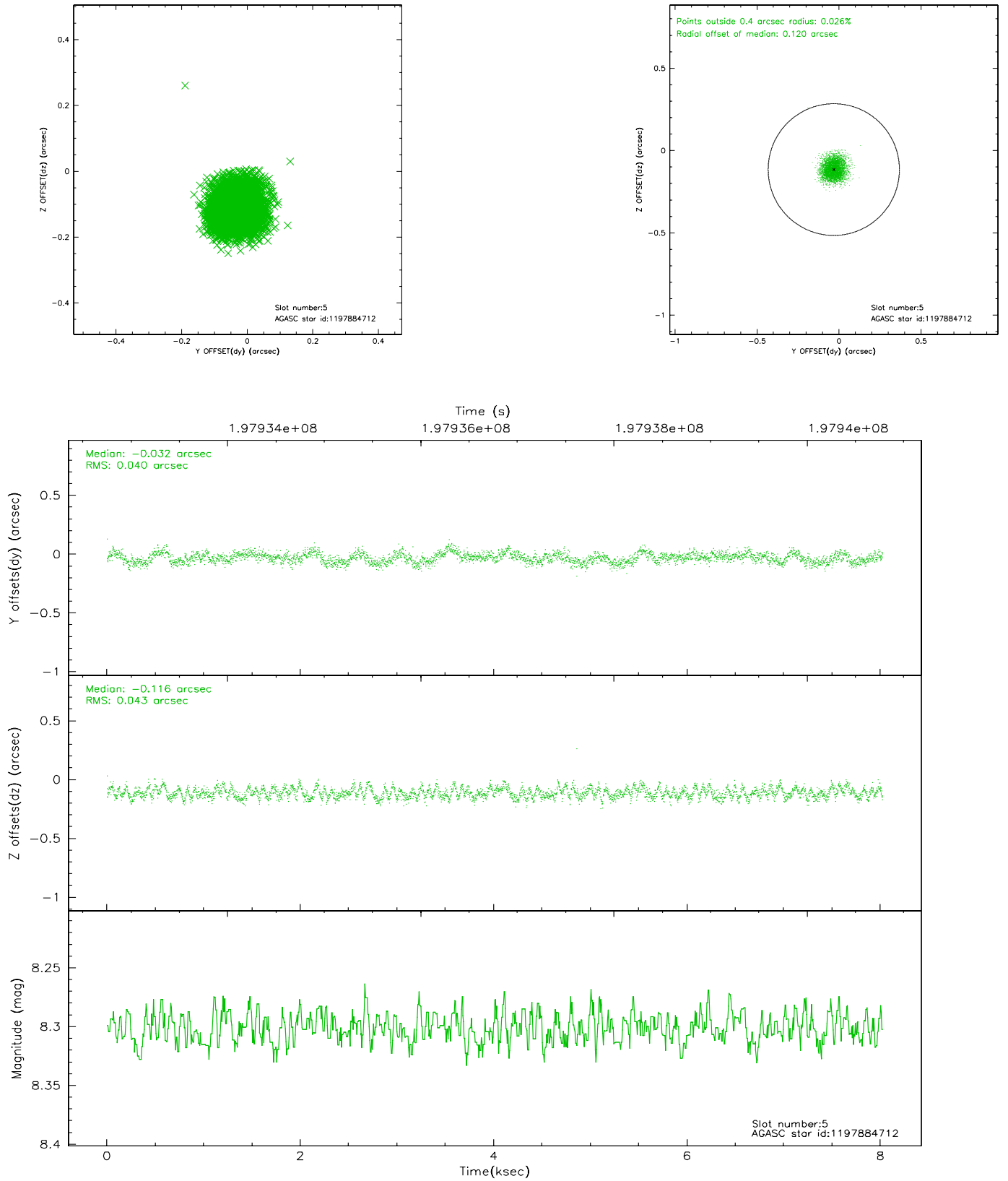
2.4.1 Slot 3



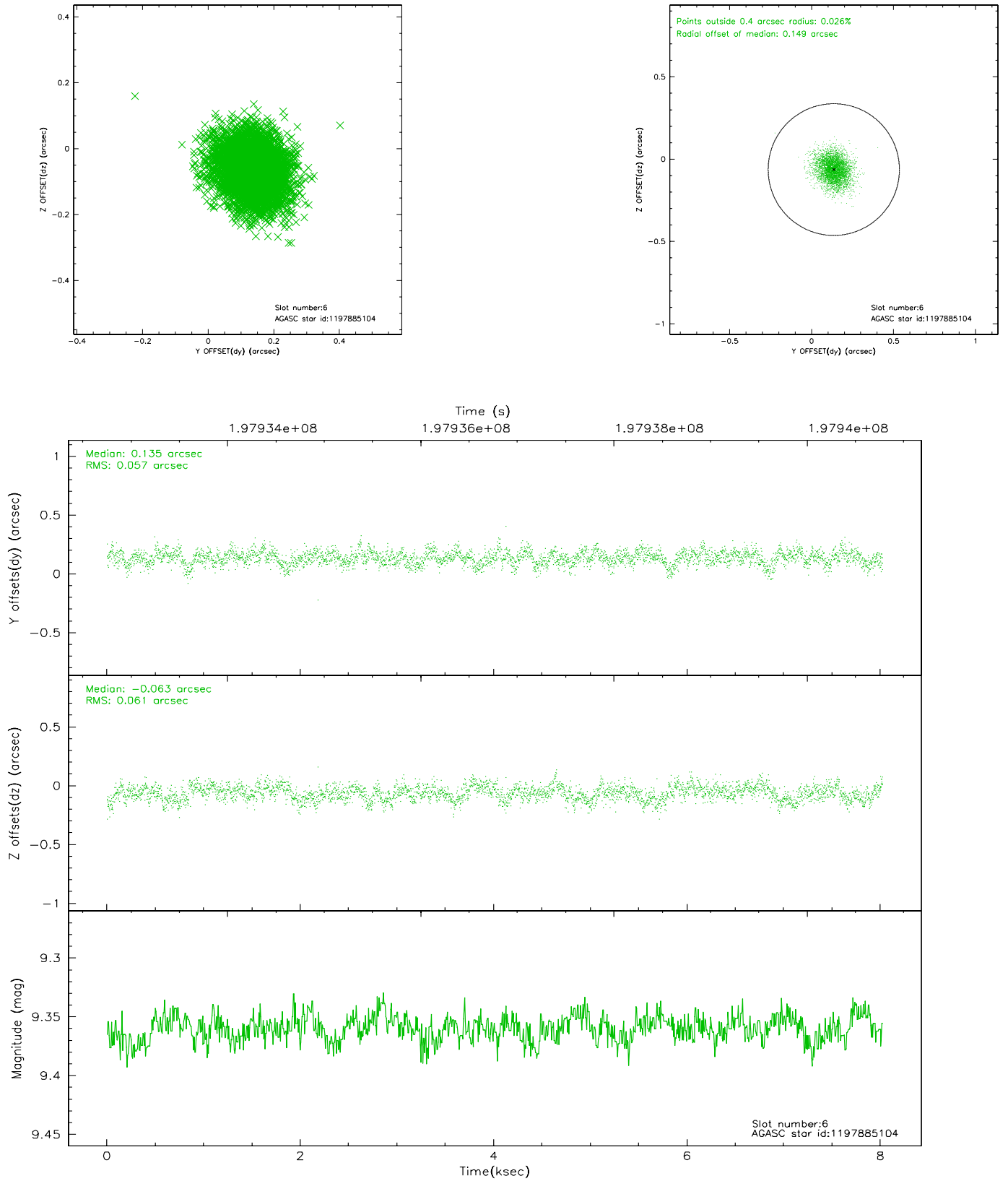
2.4.2 Slot 4



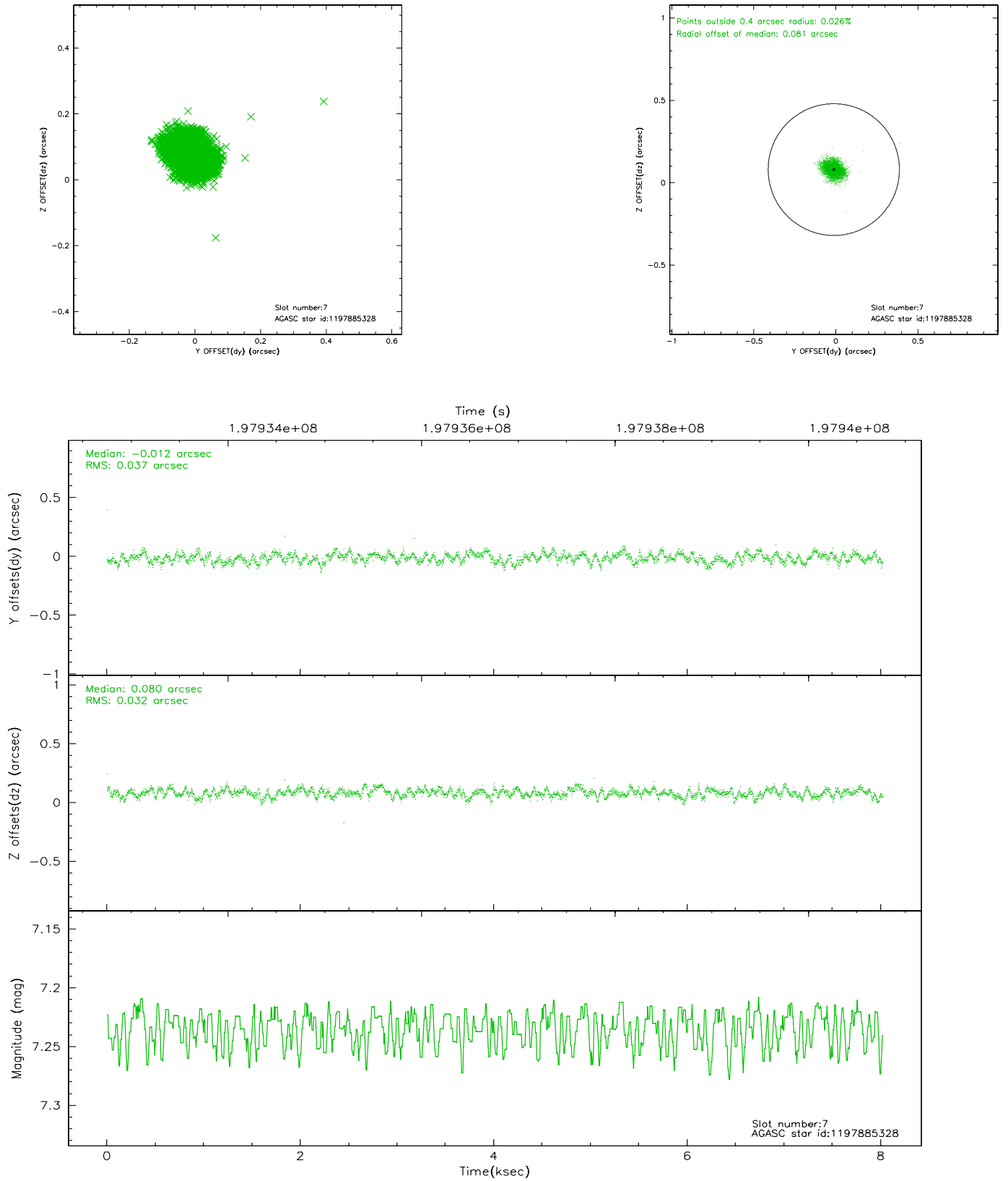
2.4.3 Slot 5



2.4.4 Slot 6

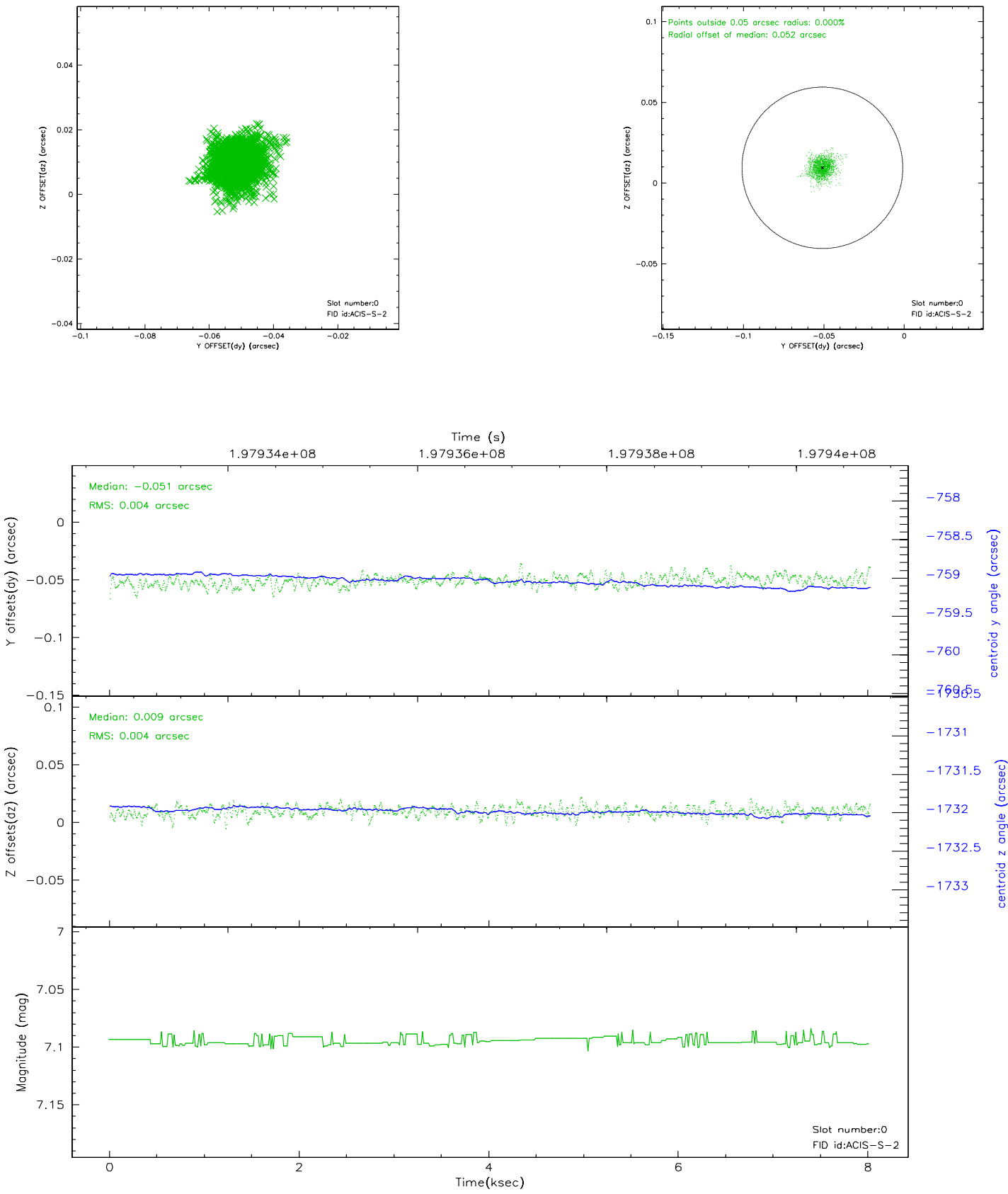


2.4.5 Slot 7

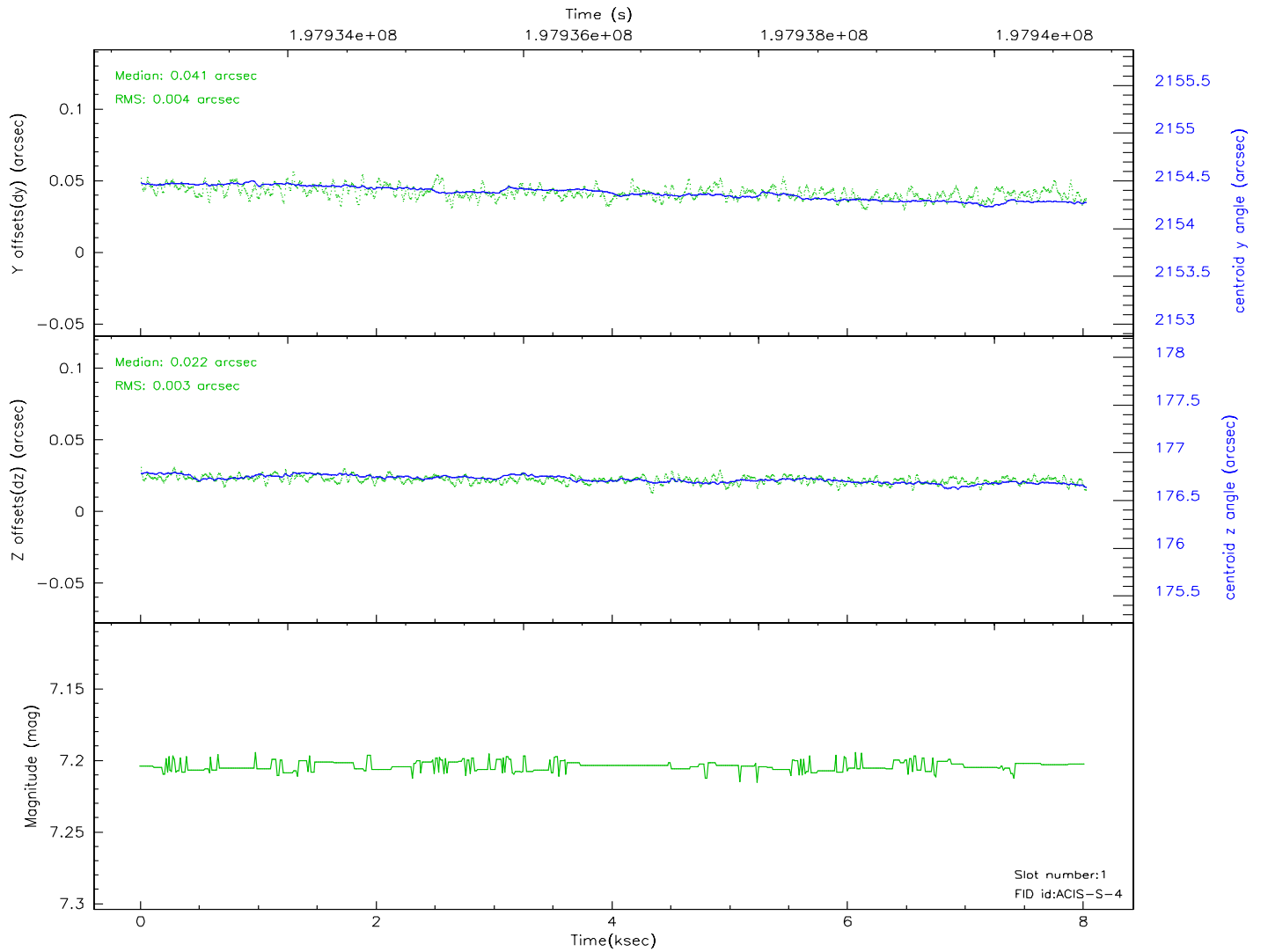
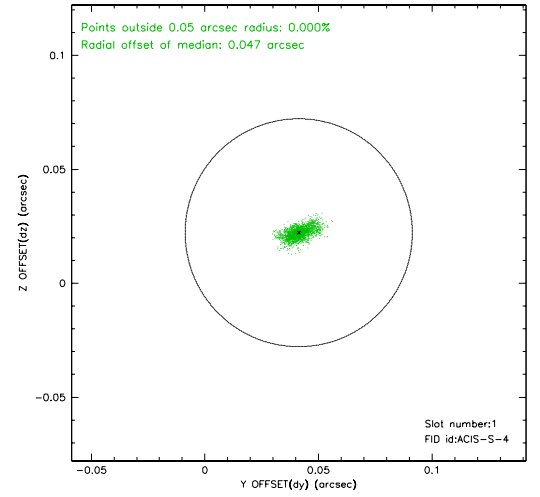
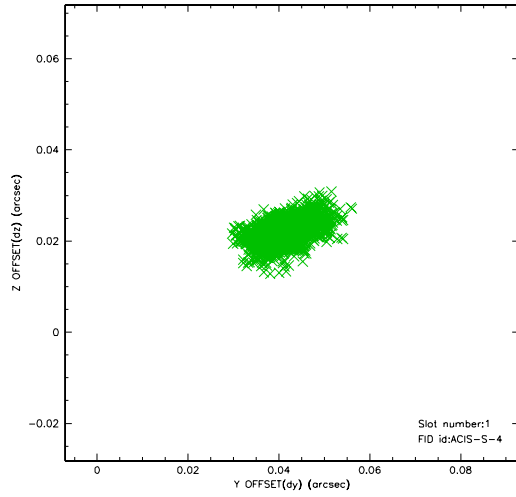


2.5 FID Slots

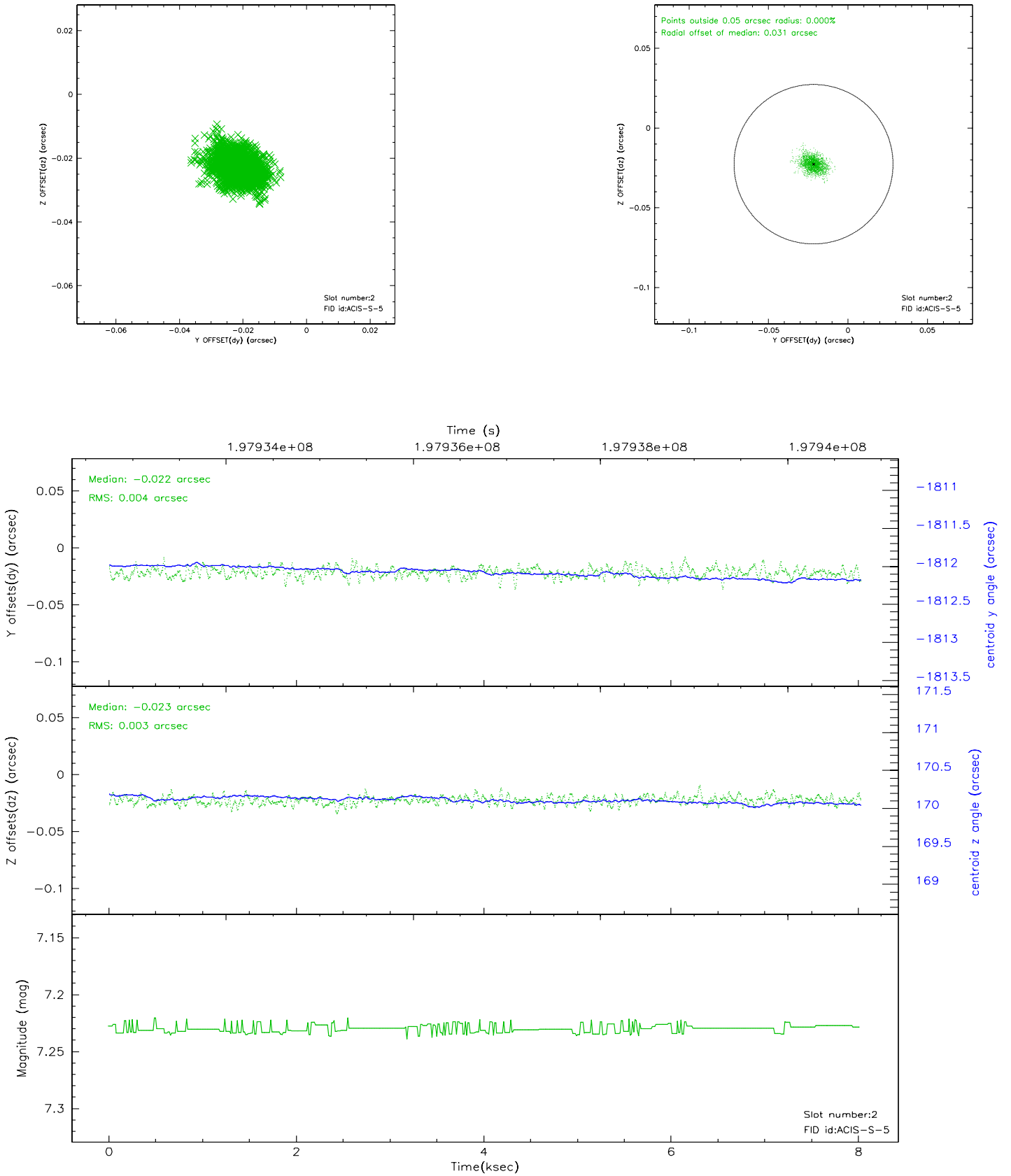
2.5.1 Slot 0



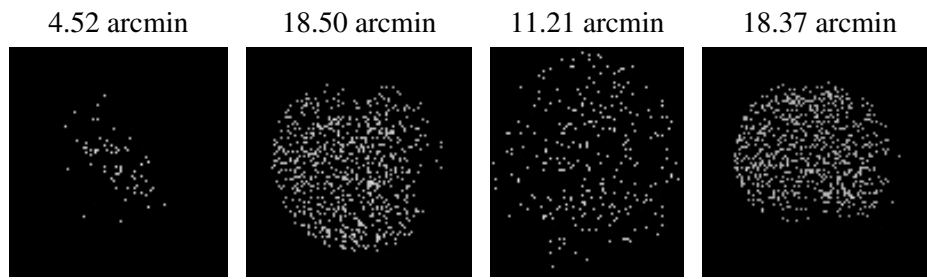
2.5.2 Slot 1



2.5.3 Slot 2



3 Point Sources



A Summary

A.1 Status

V&V Scientist	Jen Lauer
V&V Date (YYYY-MM-DD)	2006.05.25
V&V Edition	1
V&V Disposition and Status	OK
V&V Charge Time	7.599

A.2 Comments

Window constraint met.