

V&V Reference Report

L2 ASCDS Version : 10.4.3.1

Observation 51023 - L2 Version 1
Chandra X-Ray Center

L2 Processing Date : May 15 2016

Contents

1	Front	2
2	OBI	3
2.1	OBI	3
2.1.1	Images	3
2.1.2	Bias	3
2.1.3	Parameters	4
2.1.4	Events	4
2.2	Compared Parameters	5
2.3	Star Slots	6
2.4	FID Slots	6
A	Summary	7
A.1	Status	7
A.2	Comments	7

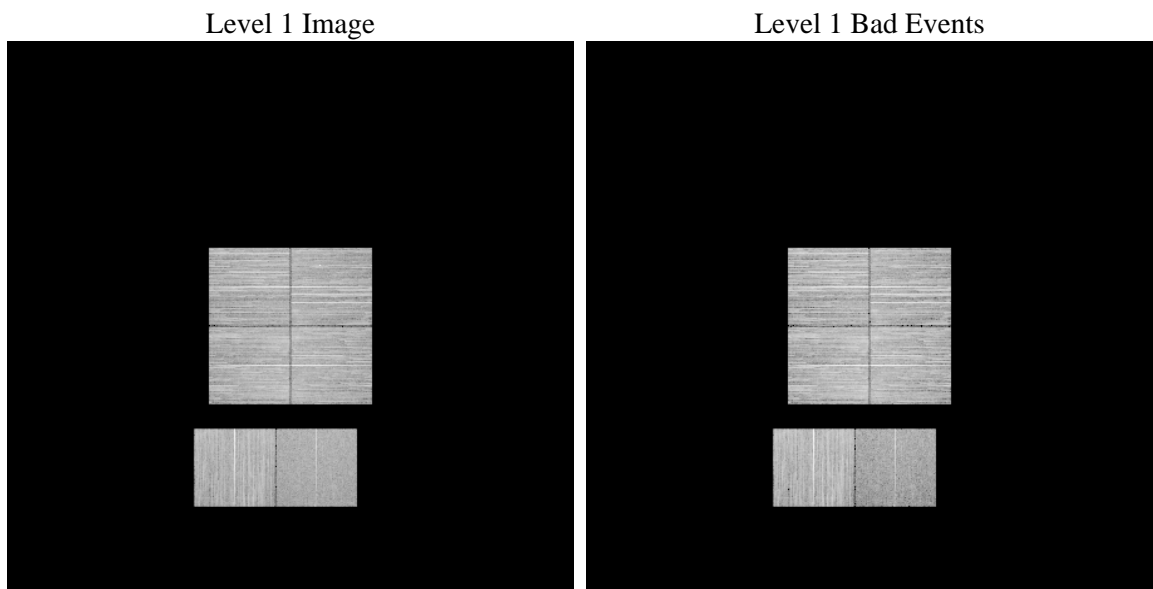
1 Front

seq_num	 	Sequence number
obs_id	51023	Observation id
title	ACIS-012367 diagnostics	Proposal title
observer	CHANDRA engineering request/realtime commanding	Principal investig
object	 	Source name
dtcycle	0	
cycle	P	events from which exps? Prim/Second/Both
ra_targ	0.0	Observer's specified target RA [deg]
dec_targ	0.0	Observer's specified target Dec [deg]
ra_nom	216.98916613687	Nominal RA [deg]
dec_nom	1.9732924553922	Nominal Dec [deg]
roll_nom	215.1218826776	Nominal Roll [deg]
revision	1	Processing version of data
ontime	6767.9390892982	Sum of GTIs [s]
livetime	6682.2393693859	Livetime [s]
ontime0	6767.8980492353	Sum of GTIs [s]
ontime1	6767.8570092916	Sum of GTIs [s]
ontime2	6764.5748282671	Sum of GTIs [s]
ontime3	6767.9801292419	Sum of GTIs [s]
ontime6	6767.774929285	Sum of GTIs [s]
ontime7	6767.9390892982	Sum of GTIs [s]
l2events	116266	Number of level 2 events

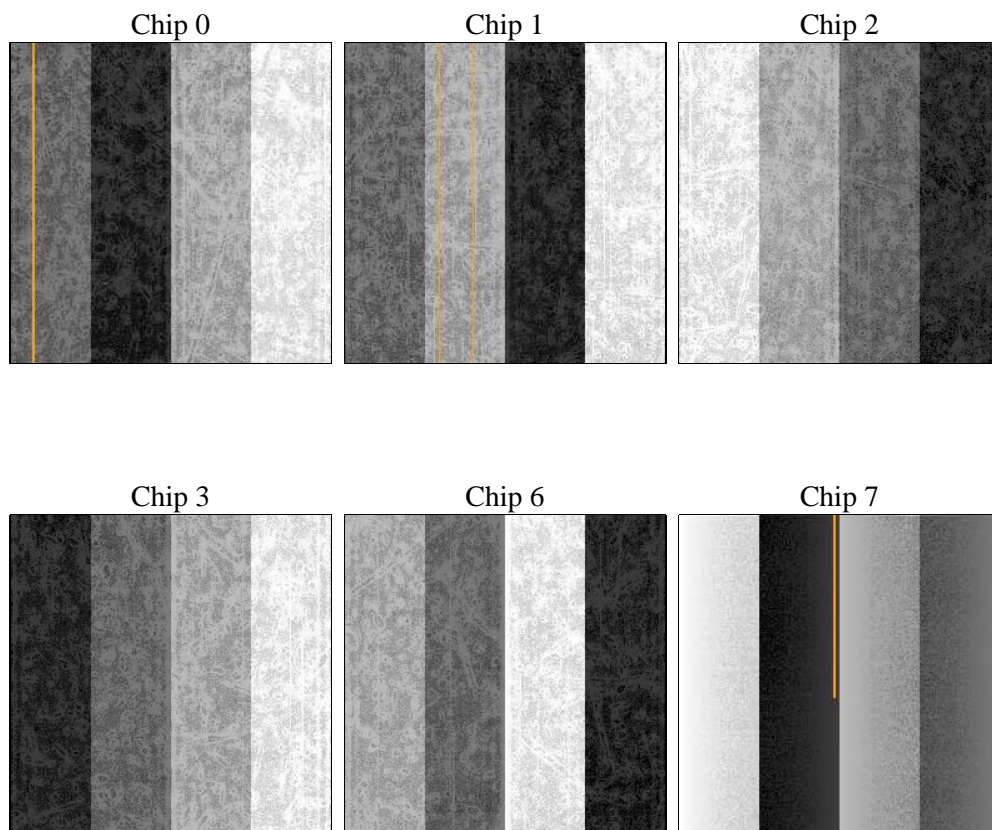
2 OBI

2.1 OBI

2.1.1 Images



2.1.2 Bias



2.1.3 Parameters

obi_num	0	Obi number	sched_exp_time	0.0	[s] Scheduled observation exposure time
ascdsver	10.4.3.1	Processing system revision	ontime	6767.9390892982	Sum of GTIs [s]
caldsver	4.7.1	 	ontime0	6767.8980492353	Sum of GTIs [s]
date	2016-05-15T14:54:32	Date and time of file creation	ontime1	6767.8570092916	Sum of GTIs [s]
revision	1	Processing version of data	ontime2	6764.5748282671	Sum of GTIs [s]
			ontime3	6767.9801292419	Sum of GTIs [s]
			ontime6	6767.774929285	Sum of GTIs [s]
			ontime7	6767.9390892982	Sum of GTIs [s]
			l1events	864356	Number of level 1 events

2.1.4 Events

	ccd 0	ccd 1	ccd 2	ccd 3	ccd 6	ccd 7		ccd 0	ccd 1	ccd 2	ccd 3	ccd 6	ccd 7
level 1 events	150332	146651	156995	151048	147588	111742	grade 0 events	7323	7262	7712	7638	7001	4212
rejected events	134335	129546	140938	134698	130864	69603		4%	4%	4%	5%	4%	3%
rejected %	89%	88%	89%	89%	88%	62%	grade 1 events	46	45	55	68	49	80
								0%	0%	0%	0%	0%	0%
							grade 2 events	3712	4414	3457	3608	4300	10718
								2%	3%	2%	2%	2%	9%
							grade 3 events	1109	1119	1148	1213	1060	2833
								0%	0%	0%	0%	0%	2%
							grade 4 events	1123	1110	1134	1228	1047	2825
								0%	0%	0%	0%	0%	2%
							grade 5 events	2551	2530	2549	3100	2755	6860
								1%	1%	1%	2%	1%	6%
							grade 6 events	2764	3244	2638	2700	3357	21633
								1%	2%	1%	1%	2%	19%
							grade 7 events	131704	126927	138302	131493	128019	62581
								87%	86%	88%	87%	86%	56%

2.2 Compared Parameters

Parameter	Planned	Actual	Parameter	Planned	Actual
Instrument	ACIS	ACIS	Obspar format version number	7	7
Detector	ACIS-012367	ACIS-012367	Obspar file type	PREDICTED	ACTUAL
Grating	NONE	NONE	Obspar update status	NONE	UPDATED
Data mode	FAINT	FAINT	Number of optional ACIS chips dropped	0	0
Observation mode	SECONDARY	SECONDARY	On-chip summing requested	N	N
[deg] Pointing RA	0	216.9891661368727	Subarray requested	NONE	NONE
[deg] Pointing Dec	0	1.973292455392168	Alternating exposures requested	N	N
[deg] Pointing Roll	0.0	215.121882677596	[s] Primary exposure time	3.2	3.2
[mm] SIM focus pos	-1.429586	-0.7809083437167272			
[mm] SIM defocus	0.1037507710433287	0.7524282956875696			
[mm] SIM translation stage pos	250.455976	250.466033080201			
[mm] SIM translation stage offset	0	-0.01005468664627074			
[s] Observation start time (MET)	579678492.003881	579678490.97888			
Observation start date	2016-05-15T05:48:12	2016-05-15T05:48:10			
[s] Observation end time (MET)	579690201.604551	579690200.57955			
Observation end date	2016-05-15T09:03:22	2016-05-15T09:03:20			
Read mode	TIMED	TIMED			

2.3 Star Slots

2.4 FID Slots

A Summary

A.1 Status

V&V Scientist	Joy Nichols
V&V Date (YYYY-MM-DD)	2016.05.16
V&V Edition	1
V&V Disposition and Status	OK
V&V Charge Time	6.7679390892982

A.2 Comments