

V&V Reference Report

L2 ASCDS Version : 8.4.5

Observation 493 - L2 Version 4
Chandra X-Ray Center

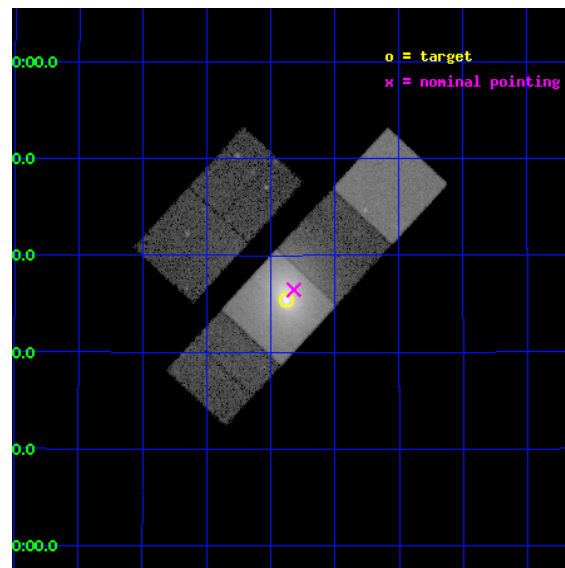
L2 Processing Date : Aug 24 2012

Contents

1	Front	2
2	OBI	3
2.1	OBI	3
2.1.1	Images	3
2.1.2	Bias	3
2.1.3	Parameters	4
2.1.4	Events	4
2.2	Compared Parameters	5
2.3	Aspect	6
2.4	Star Slots	9
2.4.1	Slot 3	9
2.4.2	Slot 4	10
2.4.3	Slot 5	11
2.4.4	Slot 6	12
2.4.5	Slot 7	13
2.5	FID Slots	14
2.5.1	Slot 0	14
2.5.2	Slot 1	15
2.5.3	Slot 2	16
A	Summary	17
A.1	Status	17
A.2	Comments	17

1 Front

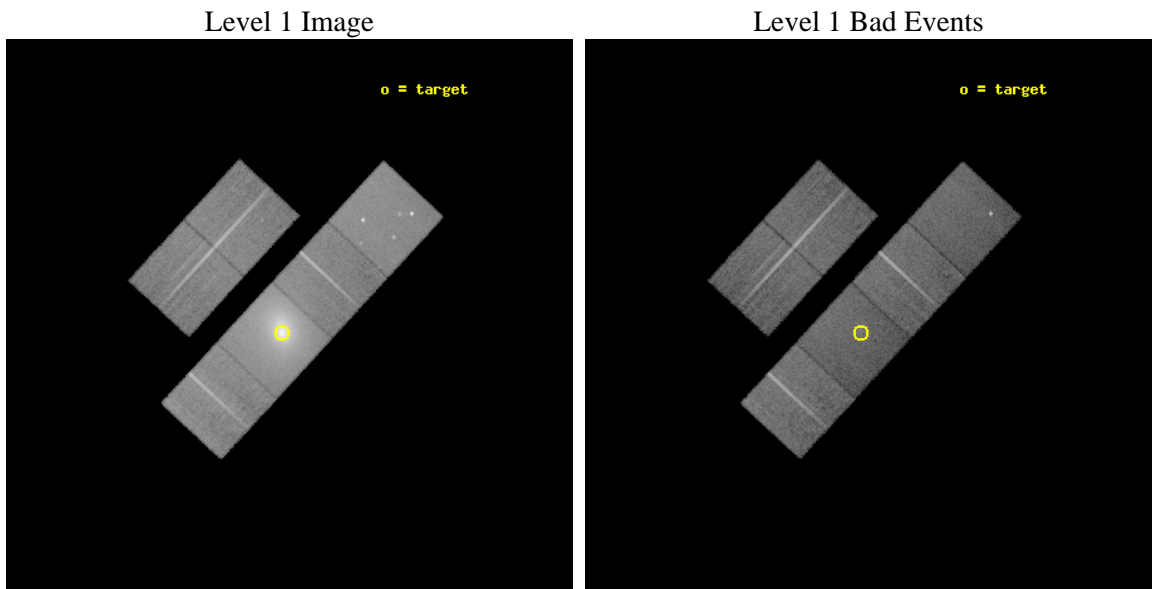
seq_num	800001	Sequence number
obs_id	493	Observation id
title	THE COOLING FLOW IN A1795	Proposal title
observer	Professor Andrew Fabian	Principal investigator
object	A1795	Source name
dtcycle	0	
cycle	P	events from which exps? Prim/Second/Both
ra_targ	207.219583	Observer's specified target RA [deg]
dec_targ	26.590833	Observer's specified target Dec [deg]
ra_nom	207.20511110464	Nominal RA [deg]
dec_nom	26.607576735685	Nominal Dec [deg]
roll_nom	132.79425642839	Nominal Roll [deg]
revision	4	Processing version of data
ontime	19880.698135614	Sum of GTIs [s]
livetime	19628.956765102	Livetime [s]
ontime2	19880.697666988	Sum of GTIs [s]
ontime3	19883.938228399	Sum of GTIs [s]
ontime5	19874.216254964	Sum of GTIs [s]
ontime6	19883.938706964	Sum of GTIs [s]
ontime7	19880.698135614	Sum of GTIs [s]
ontime8	19877.457155377	Sum of GTIs [s]
l2events	530365	Number of level 2 events



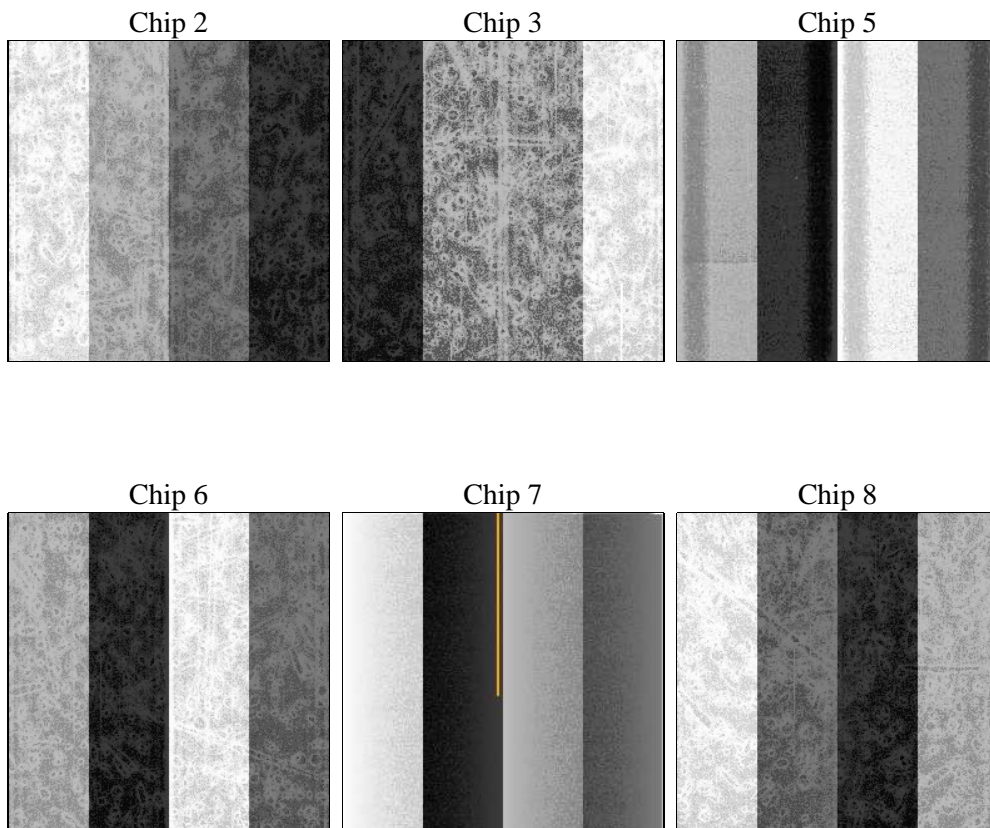
2 OBI

2.1 OBI

2.1.1 Images



2.1.2 Bias



2.1.3 Parameters

obi_num	0	Obi number	sched_exp_time	19500.000000	[s] Scheduled observation exposure time
ascdsver	8.4.5	Processing system revision	ontime	19880.698135614	Sum of GTIs [s]
caldsver	4.5.1.1	 	ontime2	19880.697666988	Sum of GTIs [s]
date	2012-08-24T14:15:10	Date and time of file creation	ontime3	19883.938228399	Sum of GTIs [s]
revision	4	Processing version of data	ontime5	19874.216254964	Sum of GTIs [s]
			ontime6	19883.938706964	Sum of GTIs [s]
			ontime7	19880.698135614	Sum of GTIs [s]
			ontime8	19877.457155377	Sum of GTIs [s]
			l1events	1304828	Number of level 1 events

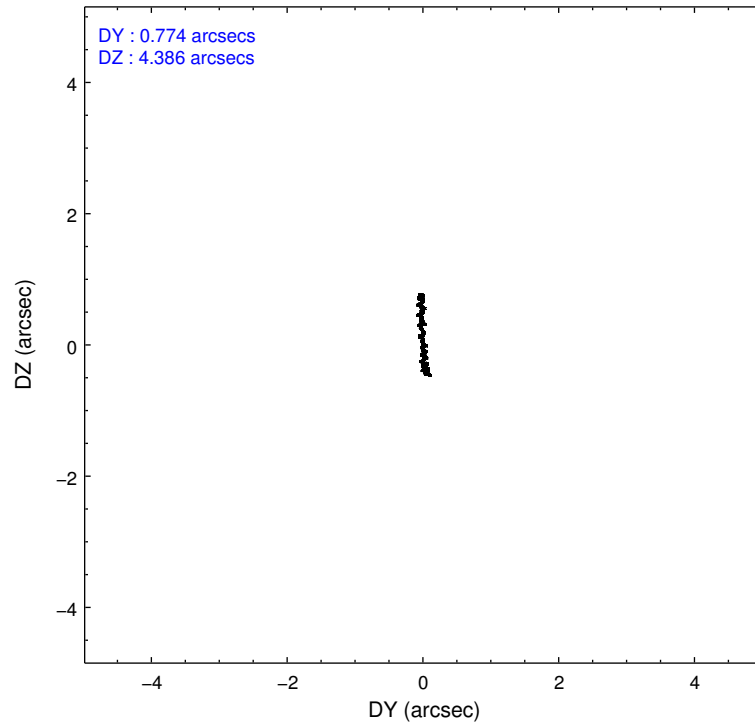
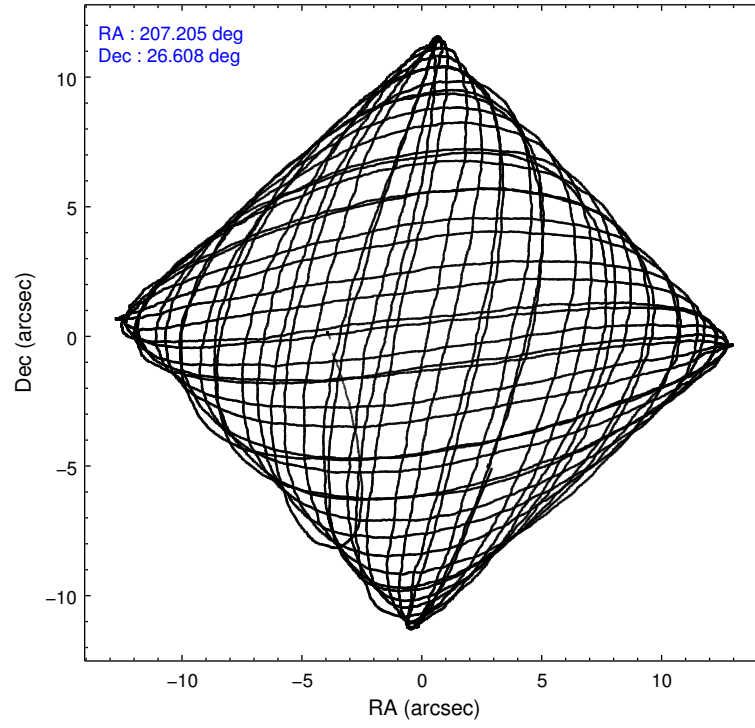
2.1.4 Events

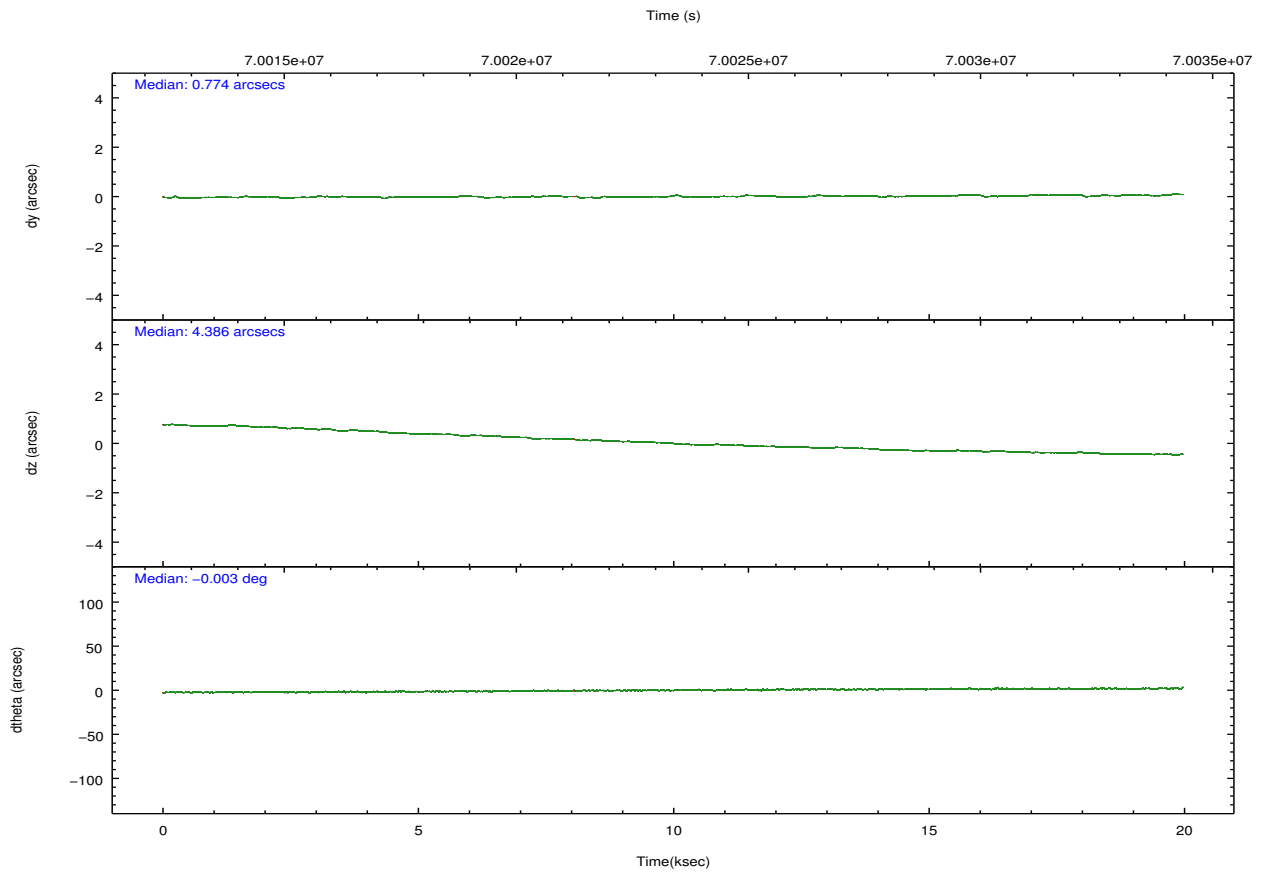
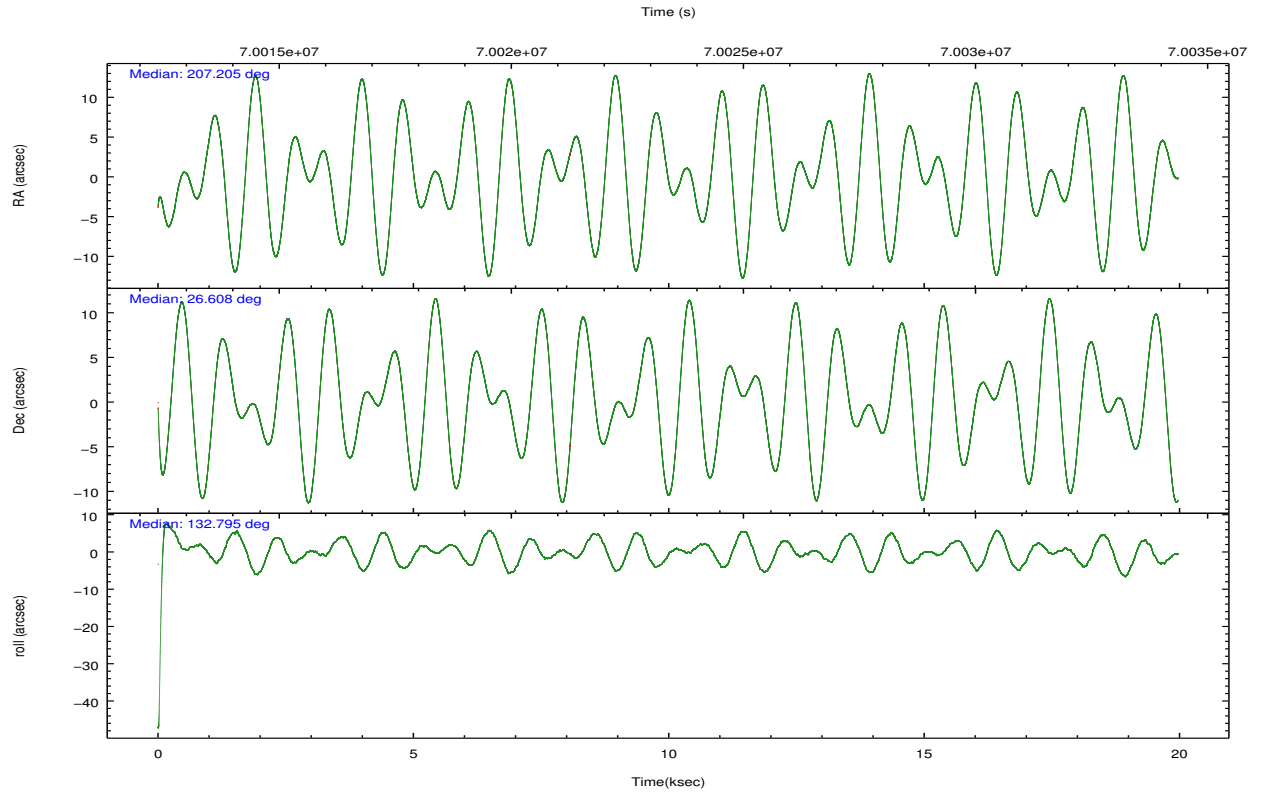
	ccd 2	ccd 3	ccd 5	ccd 6	ccd 7	ccd 8		ccd 2	ccd 3	ccd 5	ccd 6	ccd 7	ccd 8
level 1 events	150706	143438	190729	160231	476840	182884	grade 0 events	8104	8479	13591	18241	115042	14047
rejected events	133673	126339	98998	130641	98645	145381		5%	5%	7%	11%	24%	7%
rejected %	88%	88%	51%	81%	20%	79%	grade 1 events	68	83	602	114	291	119
								0%	0%	0%	0%	0%	0%
							grade 2 events	3347	3039	26460	4276	92478	7461
								2%	2%	13%	2%	19%	4%
							grade 3 events	1542	1599	4334	1972	41679	3741
								1%	1%	2%	1%	8%	2%
							grade 4 events	1521	1560	3850	1842	41260	3511
								1%	1%	2%	1%	8%	1%
							grade 5 events	4422	4769	15564	5393	17797	6754
								2%	3%	8%	3%	3%	3%
							grade 6 events	2558	2456	43639	3299	88366	8789
								1%	1%	22%	2%	18%	4%
							grade 7 events	129144	121453	82689	125094	79927	138462
								85%	84%	43%	78%	16%	75%

2.2 Compared Parameters

Parameter	Planned	Actual	Parameter	Planned	Actual
Instrument	ACIS	ACIS	Obspar format version number	7	7
Detector	ACIS-235678	ACIS-235678	Obspar file type	PREDICTED	ACTUAL
Grating	NONE	NONE	Obspar update status	NONE	UPDATED
Data mode	VFAINT	VFAINT	Number of optional ACIS chips dropped	0	0
Observation mode	POINTING	POINTING	On-chip summing requested	N	N
[deg] Pointing RA	207.234498	207.2051111046403	Subarray requested	NONE	NONE
[deg] Pointing Dec	26.599482	26.60757673568481	Alternating exposures requested	N	N
[deg] Pointing Roll	132.624506	132.7942564283893	[s] Primary exposure time	0.000000	3.2
[mm] SIM focus pos	-0.684267	-0.6828225247311905			
[mm] SIM defocus	0	0.001444936568705701			
[mm] SIM translation stage pos	-190.132523	-190.1425803651734			
[mm] SIM translation stage offset	0	0.01005778216563158			
[s] Observation start time (MET)	70013860.184000	70012489.492098			
Observation start date	2000-03-21T08:16:36	2000-03-21T07:54:49			
[s] Observation end time (MET)	70033360.184000	70034086.75538801			
Observation end date	2000-03-21T13:41:36	2000-03-21T13:54:46			
Read mode	TIMED	TIMED			

2.3 Aspect



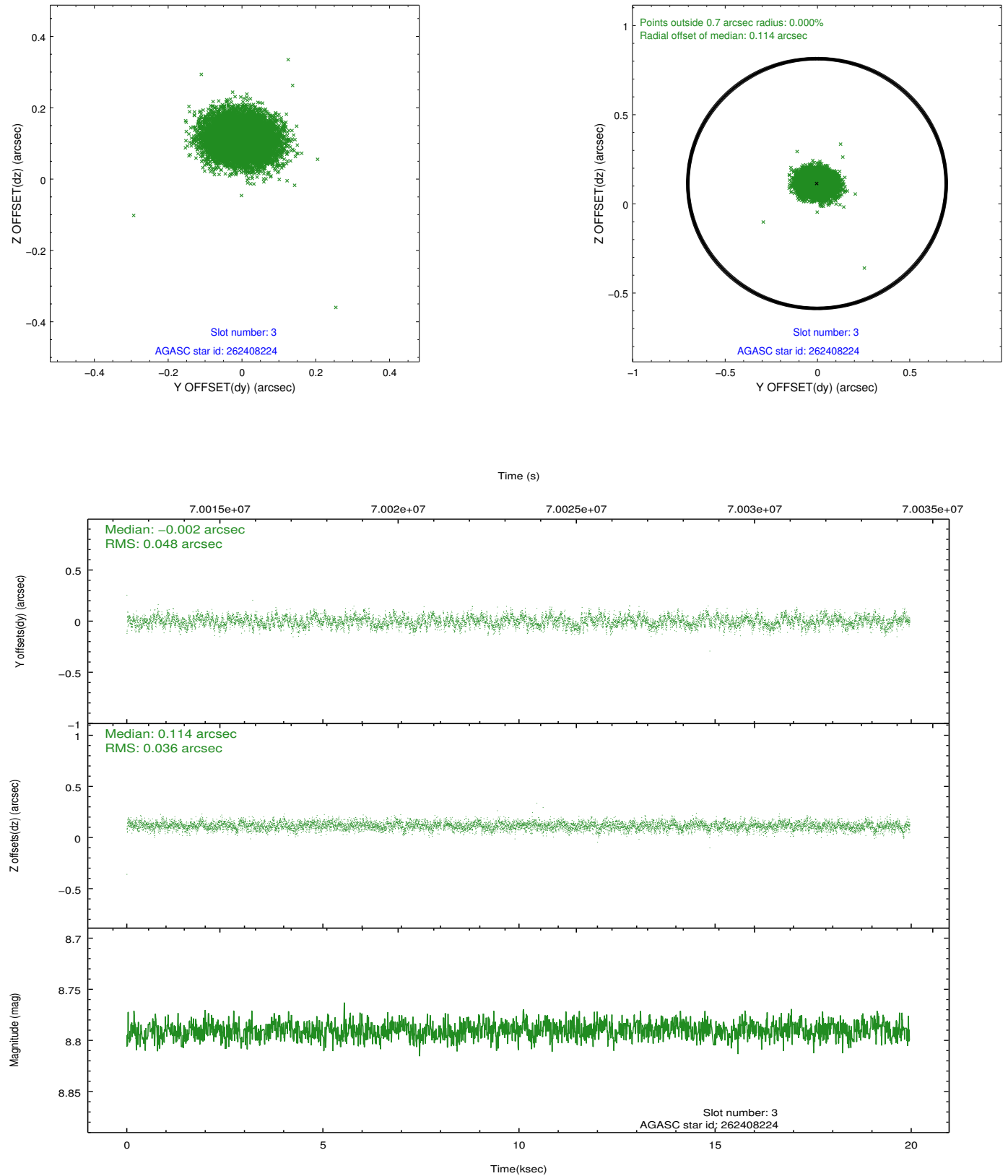


Slot Statistics

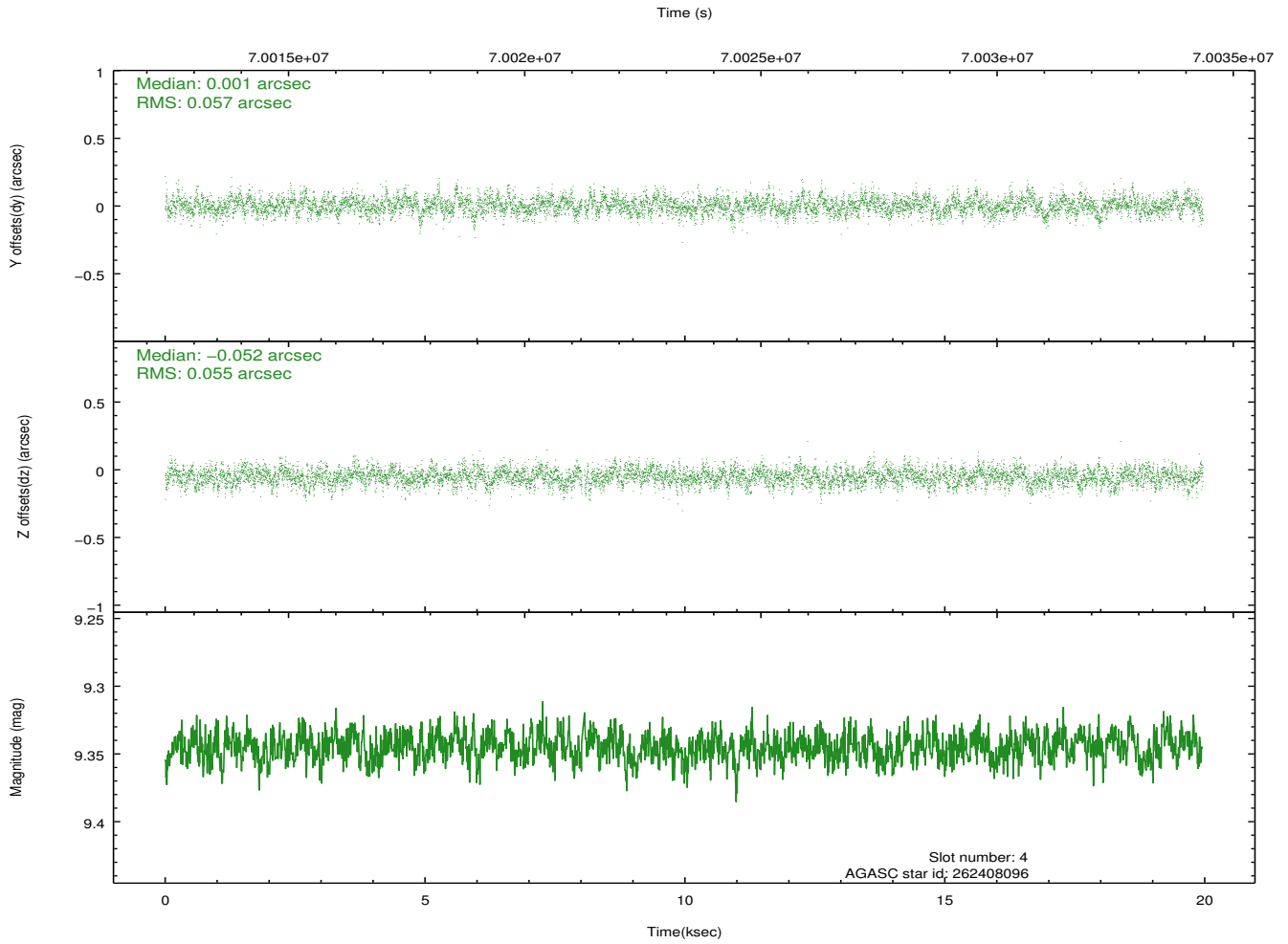
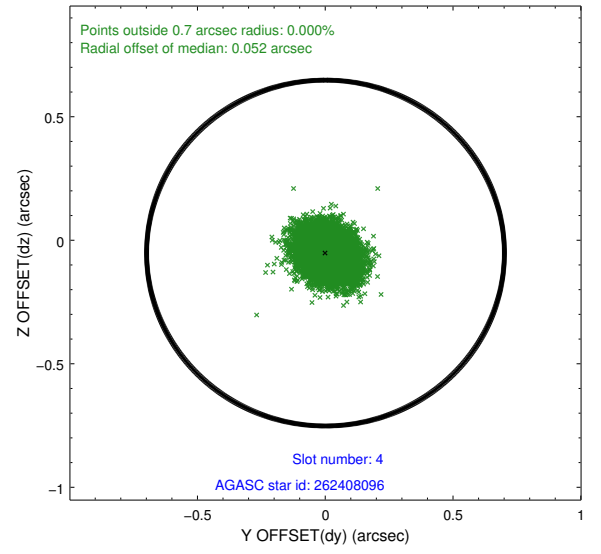
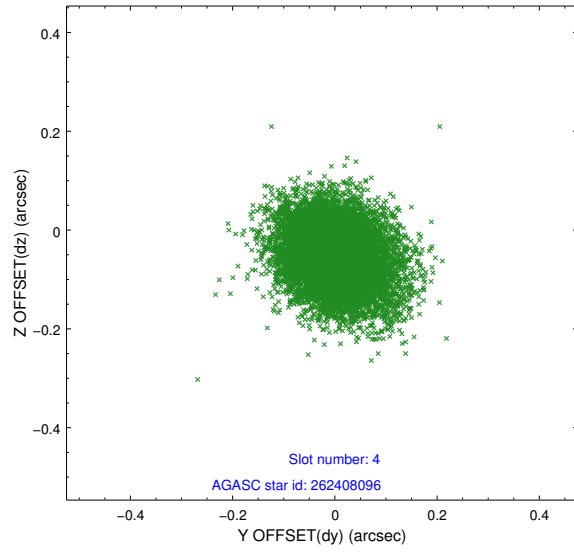
slot	status	id	mag	n_pts	med_dy	med_dz	dr1	dr2	ra	dec	mean_y	mean_z
0	FID	ACIS-S-2	7.11	4849	-0.019	-0.010	0.011	0.019	0.000000	0.000000	-753.40	-1725.50
1	FID	ACIS-S-4	7.21	4847	0.010	0.012	0.007	0.013	0.000000	0.000000	2159.84	182.78
2	FID	ACIS-S-5	7.24	4850	-0.021	0.007	0.011	0.018	0.000000	0.000000	-1805.98	176.70
3	GUIDE	262408224	8.79	9695	-0.002	0.114	0.063	0.103	207.599344	26.288334	-1620.65	-109.19
4	GUIDE	262408096	9.35	9697	0.001	-0.052	0.084	0.139	207.011678	26.515421	263.52	732.33
5	GUIDE	262408936	9.65	9695	0.059	0.027	0.084	0.140	207.154731	26.726554	510.23	-121.29
6	GUIDE	262407760	9.92	9686	-0.103	-0.030	0.110	0.176	206.566773	26.577263	1400.90	1631.90
7	GUIDE	262411960	9.69	9690	0.044	-0.063	0.120	0.193	207.327895	25.881727	-2106.06	1527.08

2.4 Star Slots

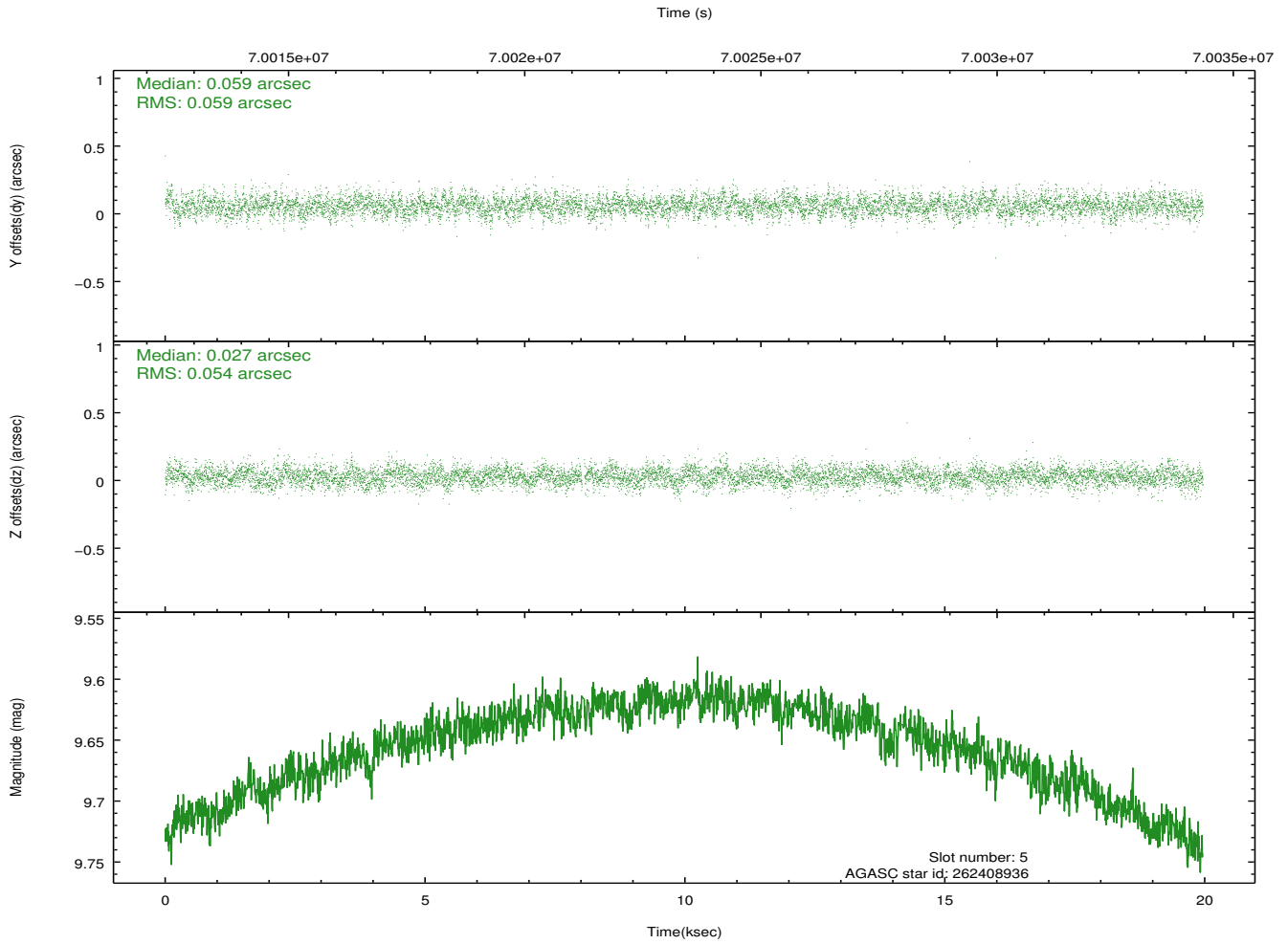
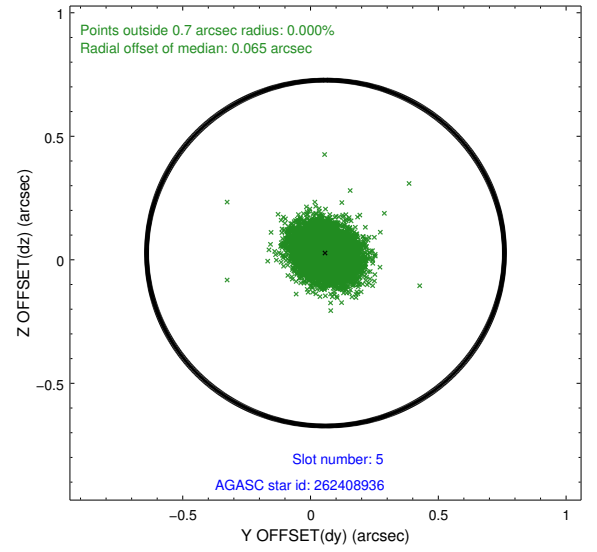
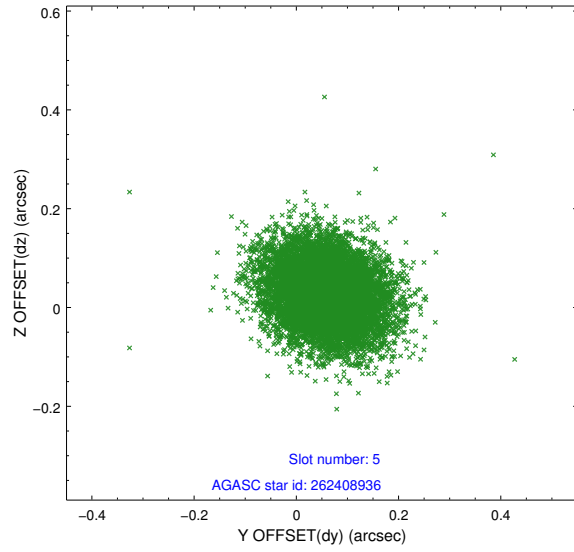
2.4.1 Slot 3



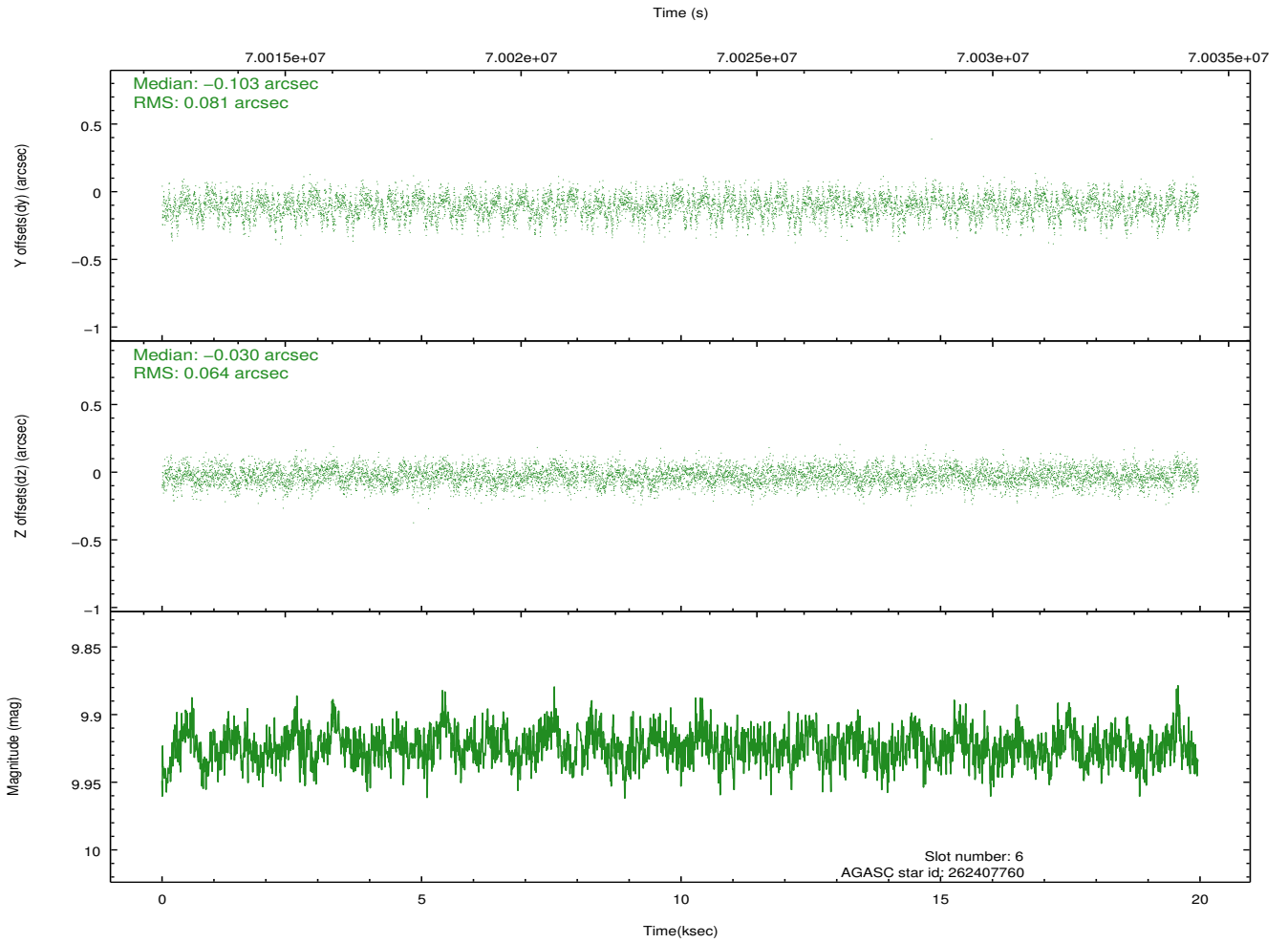
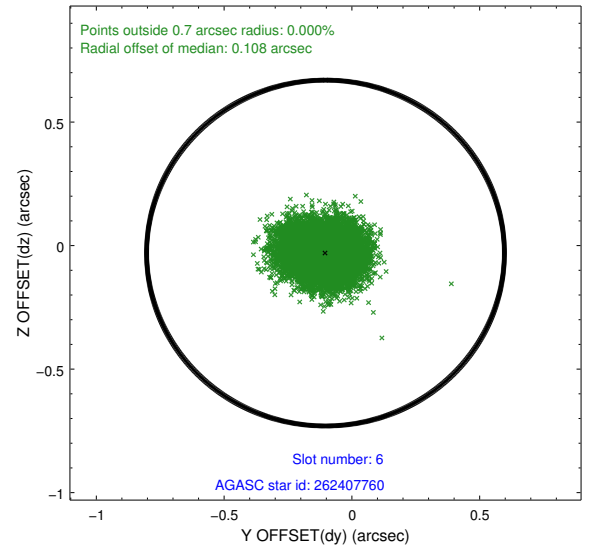
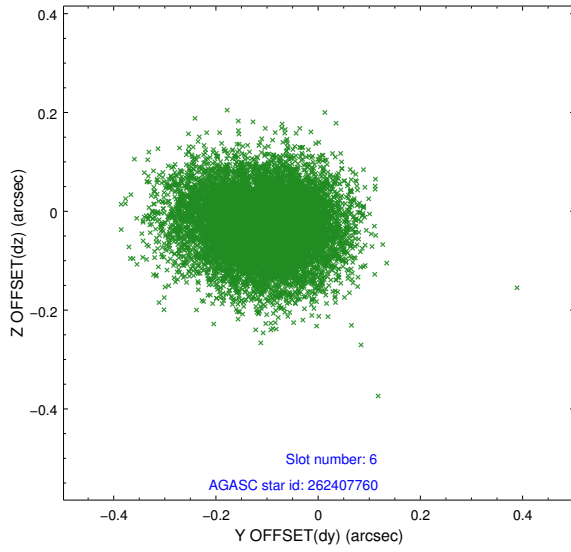
2.4.2 Slot 4



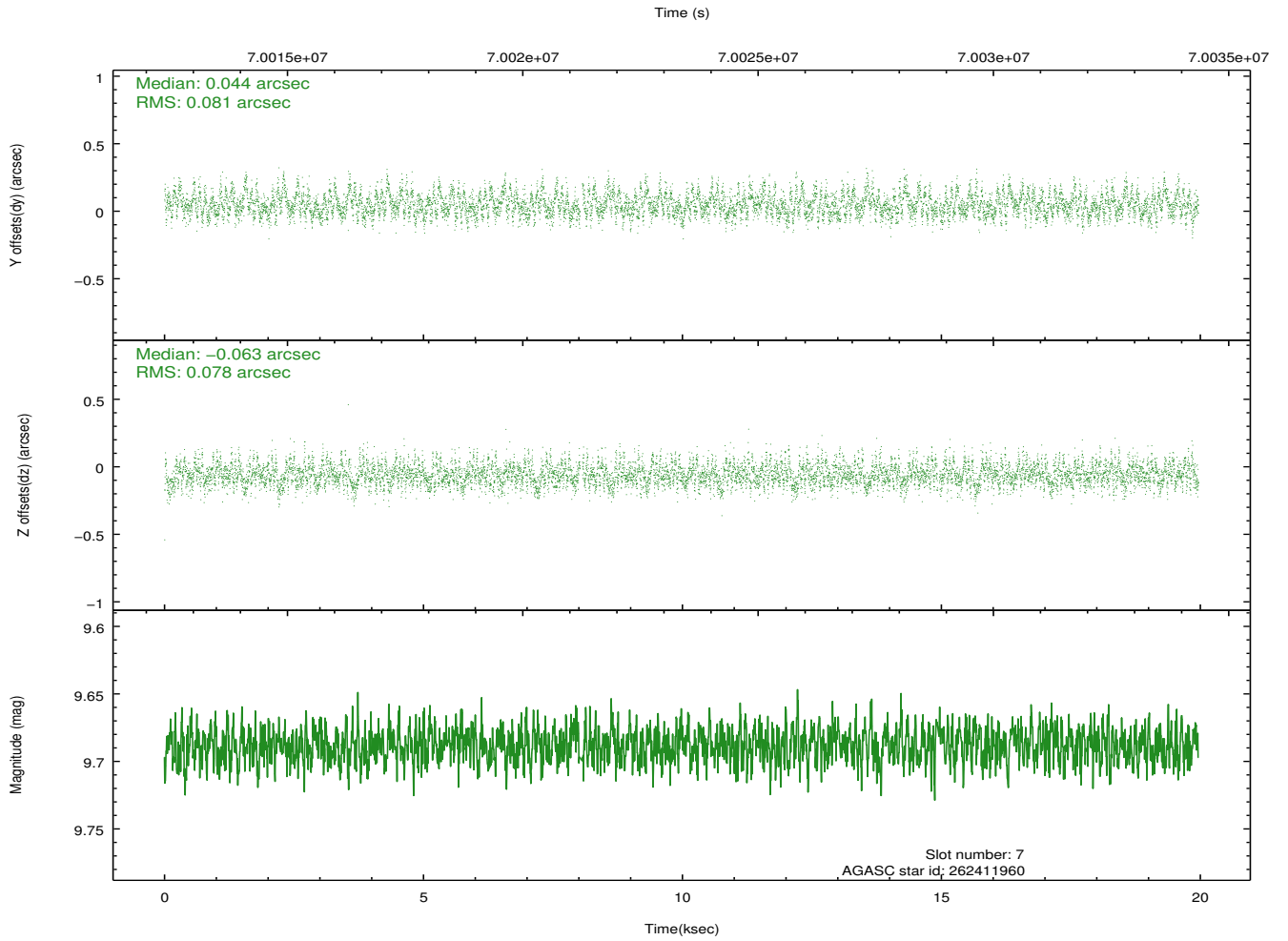
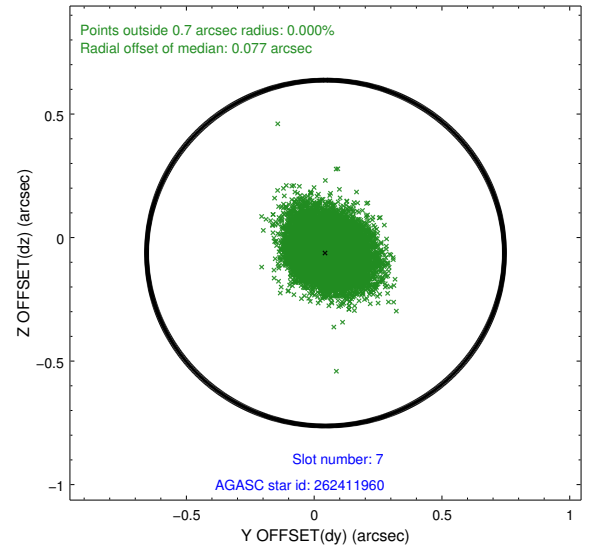
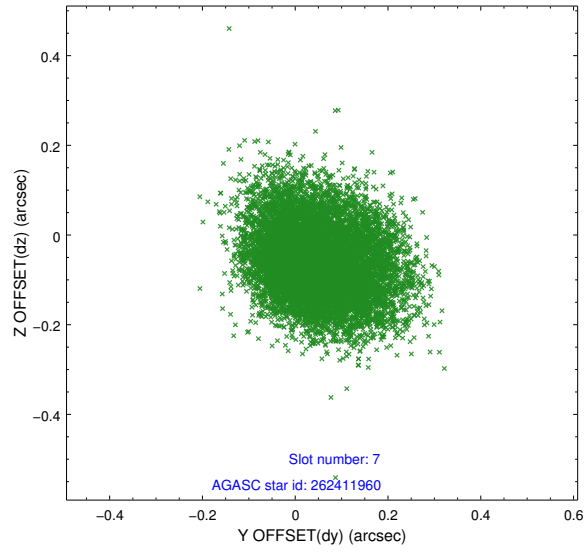
2.4.3 Slot 5



2.4.4 Slot 6

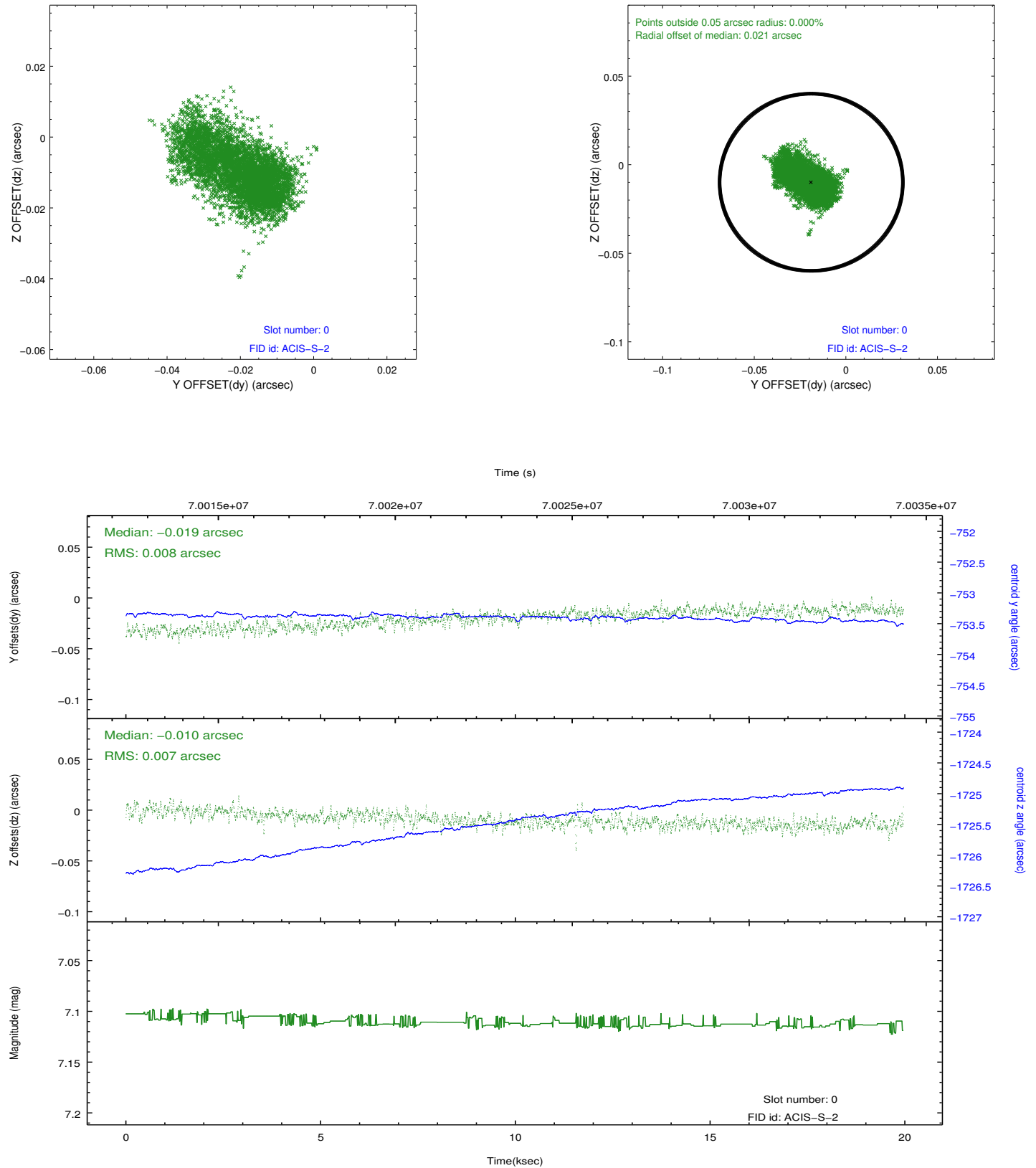


2.4.5 Slot 7

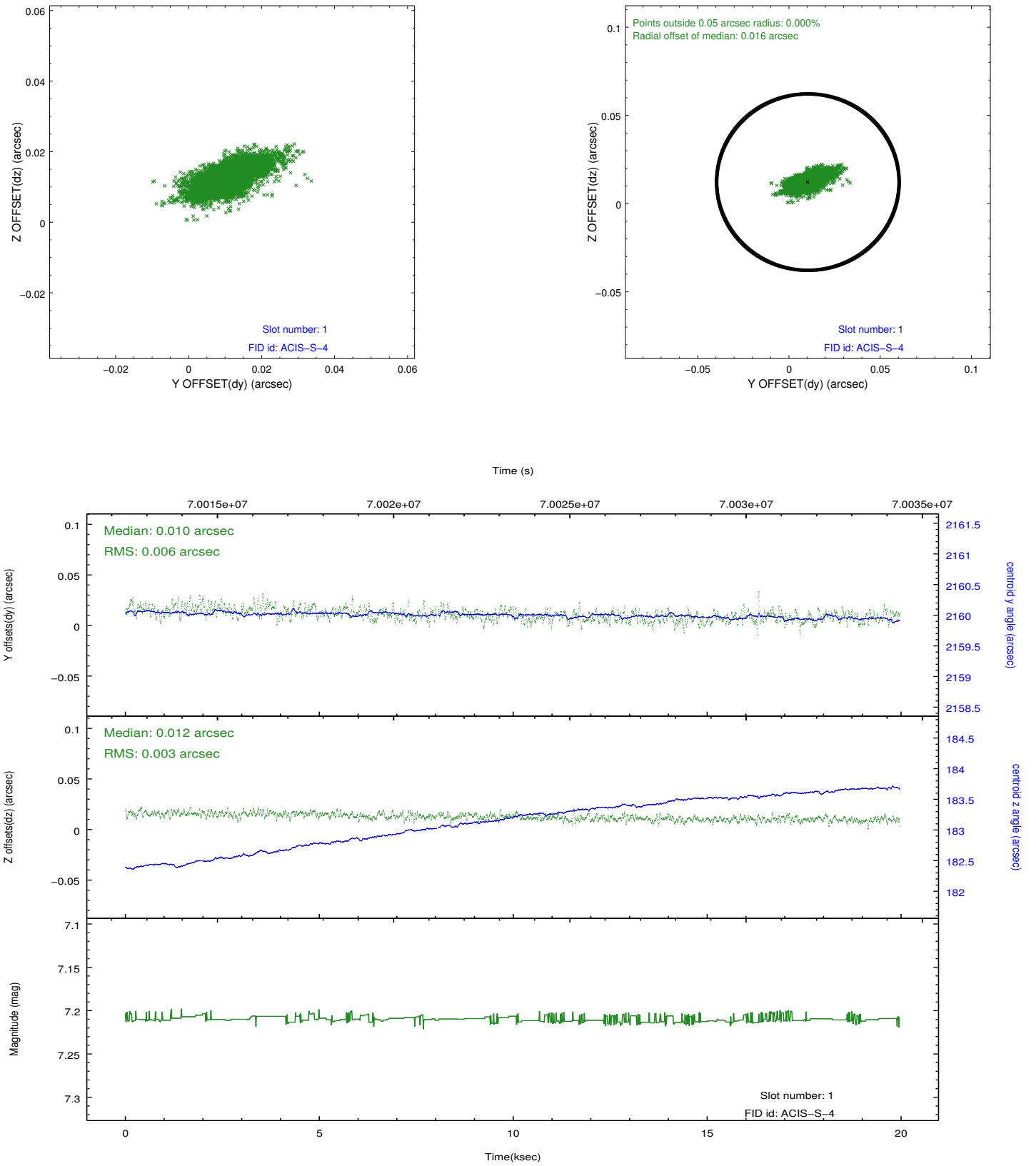


2.5 FID Slots

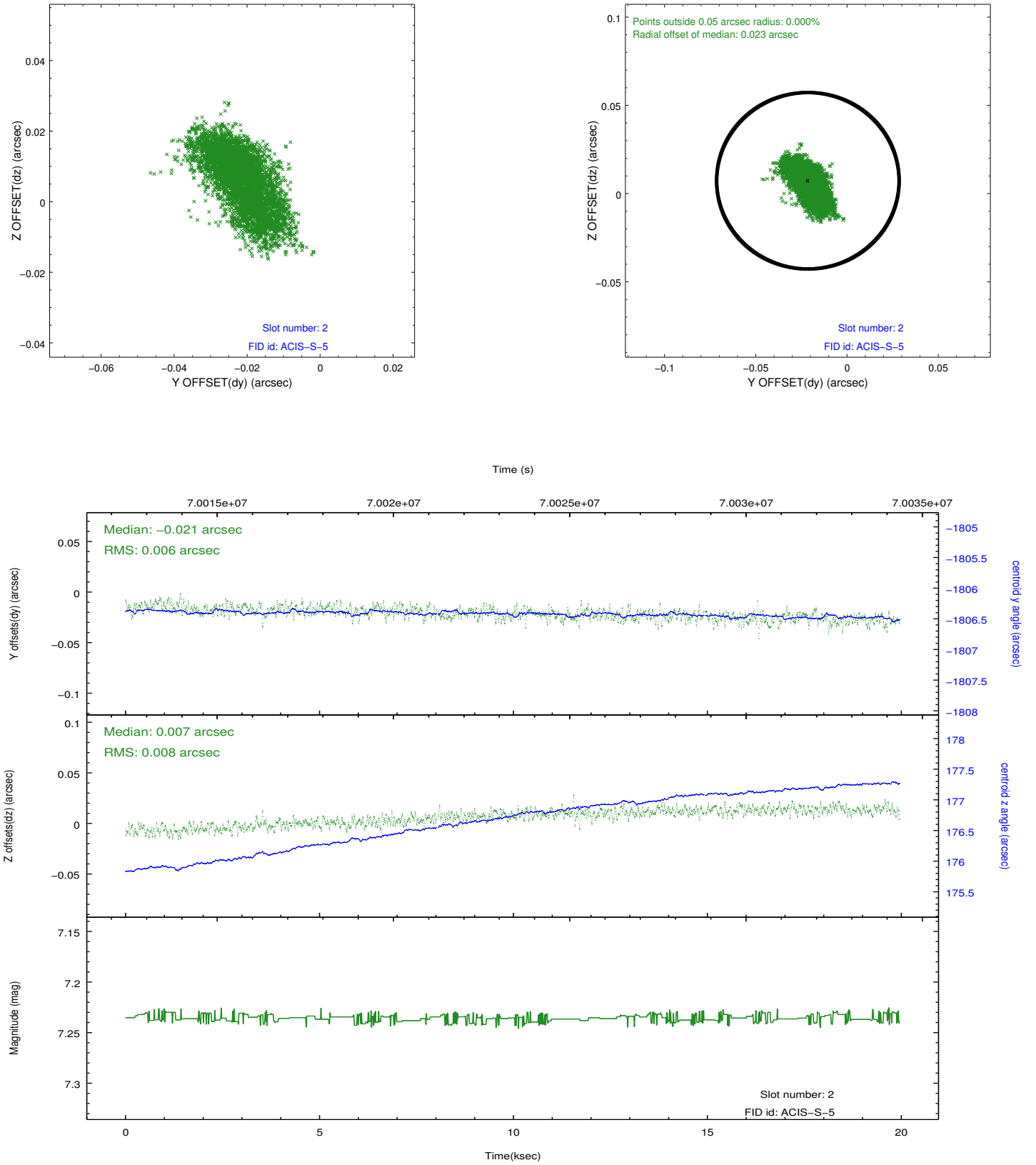
2.5.1 Slot 0



2.5.2 Slot 1



2.5.3 Slot 2



A Summary

A.1 Status

V&V Scientist	Jen Lauer
V&V Date (YYYY-MM-DD)	2012.08.27
V&V Edition	1
V&V Disposition and Status	OK
V&V Charge Time	19.878

A.2 Comments