

V&V Reference Report

L2 ASCDS Version : 7.6.7.2

Observation 4913 - L2 Version 001
Chandra X-Ray Center

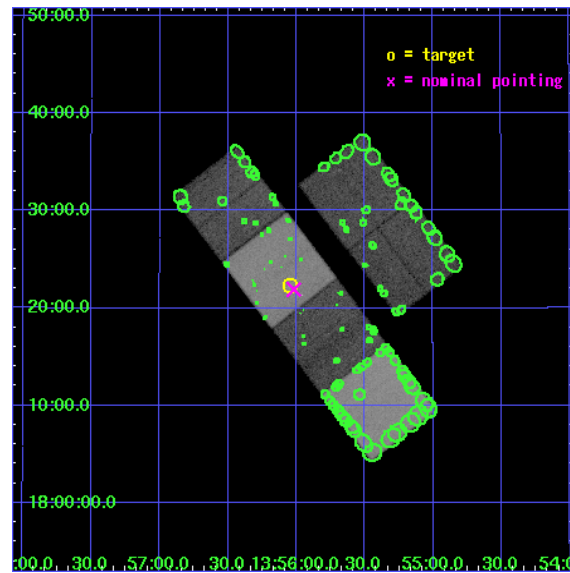
L2 Processing Date : May 1 2006

Contents

1	Front	2
2	OBI	3
2.1	OBI	3
2.1.1	Images	3
2.1.2	Bias	3
2.1.3	Parameters	4
2.1.4	Events	4
2.2	Compared Parameters	5
2.3	Aspect	6
2.4	Star Slots	9
2.4.1	Slot 3	9
2.4.2	Slot 4	10
2.4.3	Slot 5	11
2.4.4	Slot 6	12
2.4.5	Slot 7	13
2.5	FID Slots	14
2.5.1	Slot 0	14
2.5.2	Slot 1	15
2.5.3	Slot 2	16
3	Point Sources	17
A	Summary	18
A.1	Status	18
A.2	Comments	18

1 Front

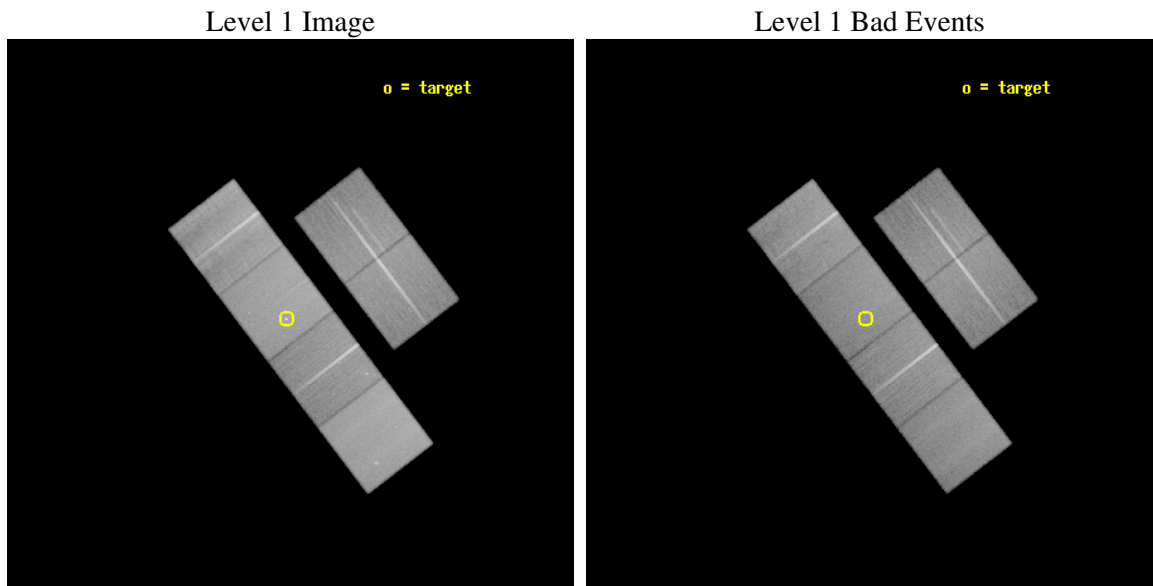
seq_num	700994
obs_id	4913
title	Starburst-superwinds and two active nuclei in Mrk463 ?
observer	Dr. Peter Predehl
object	Mrk 463
dtcycle	0
cycle	P
ra_targ	209.012083
dec_targ	18.371944
ra_nom	209.00458269574
dec_nom	18.365431334043
roll_nom	232.57605349217
revision	2
ontime	49958.39981389
livetime	49325.79647411
ontime2	49955.158813715
ontime3	49958.39981389
ontime5	49958.39981389
ontime6	49958.39981389
ontime7	49958.39981389
ontime8	49955.158833623
l2events	559170



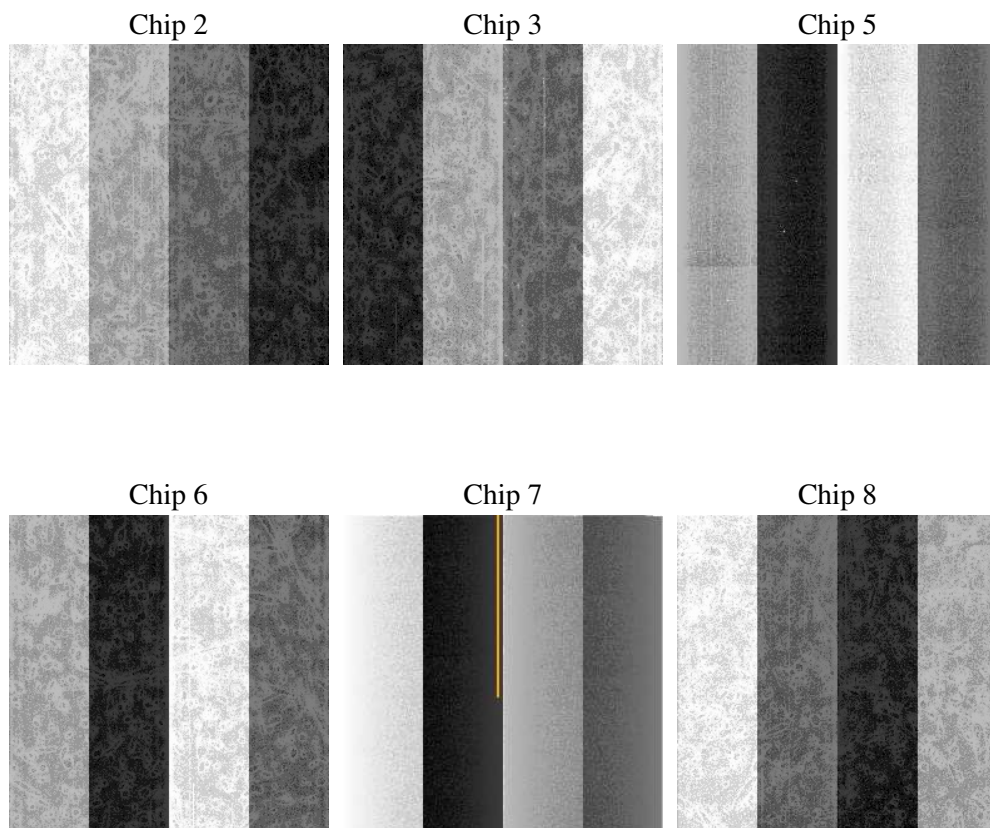
2 OBI

2.1 OBI

2.1.1 Images



2.1.2 Bias



2.1.3 Parameters

obi_num	0
ascdsver	7.6.7.2
caldsver	3.2.1
date	2006-05-01T15:56:27
revision	2

sched_exp_time	50000.000000
ontime	49963.340871066
ontime2	49960.099850953
ontime3	49963.340851128
ontime5	49963.340871066
ontime6	49963.340851128
ontime7	49963.340871066
ontime8	49960.099870861
l1events	2556620

2.1.4 Events

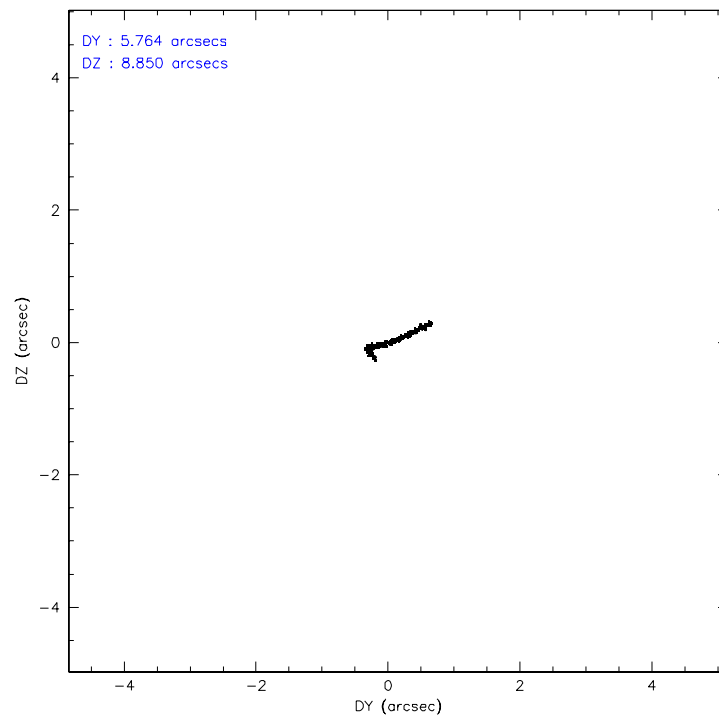
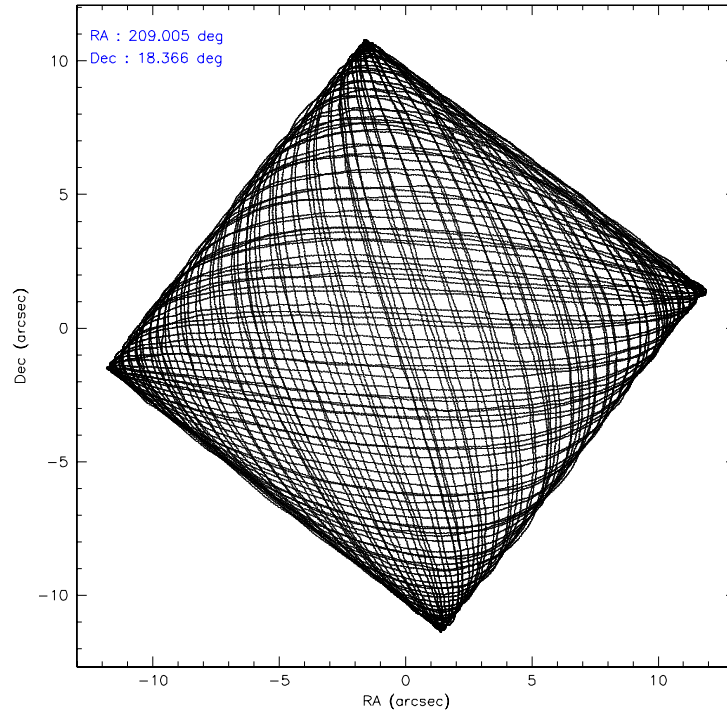
	ccd 2	ccd 3	ccd 5	ccd 6	ccd 7	ccd 8
level 1 events	367307	347818	524465	368336	490242	458452
rejected events	325202	306832	298986	324371	300903	361890
rejected %	88%	88%	57%	88%	61%	78%

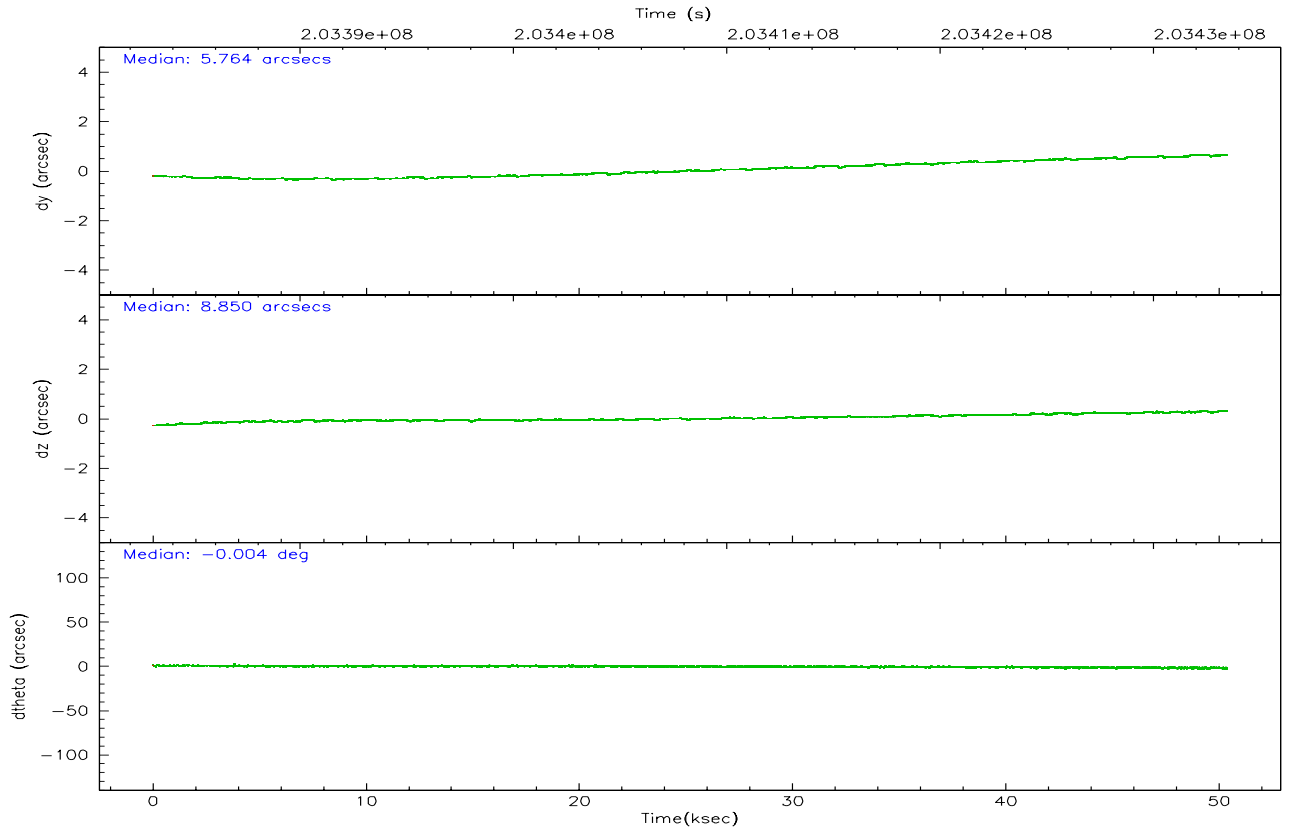
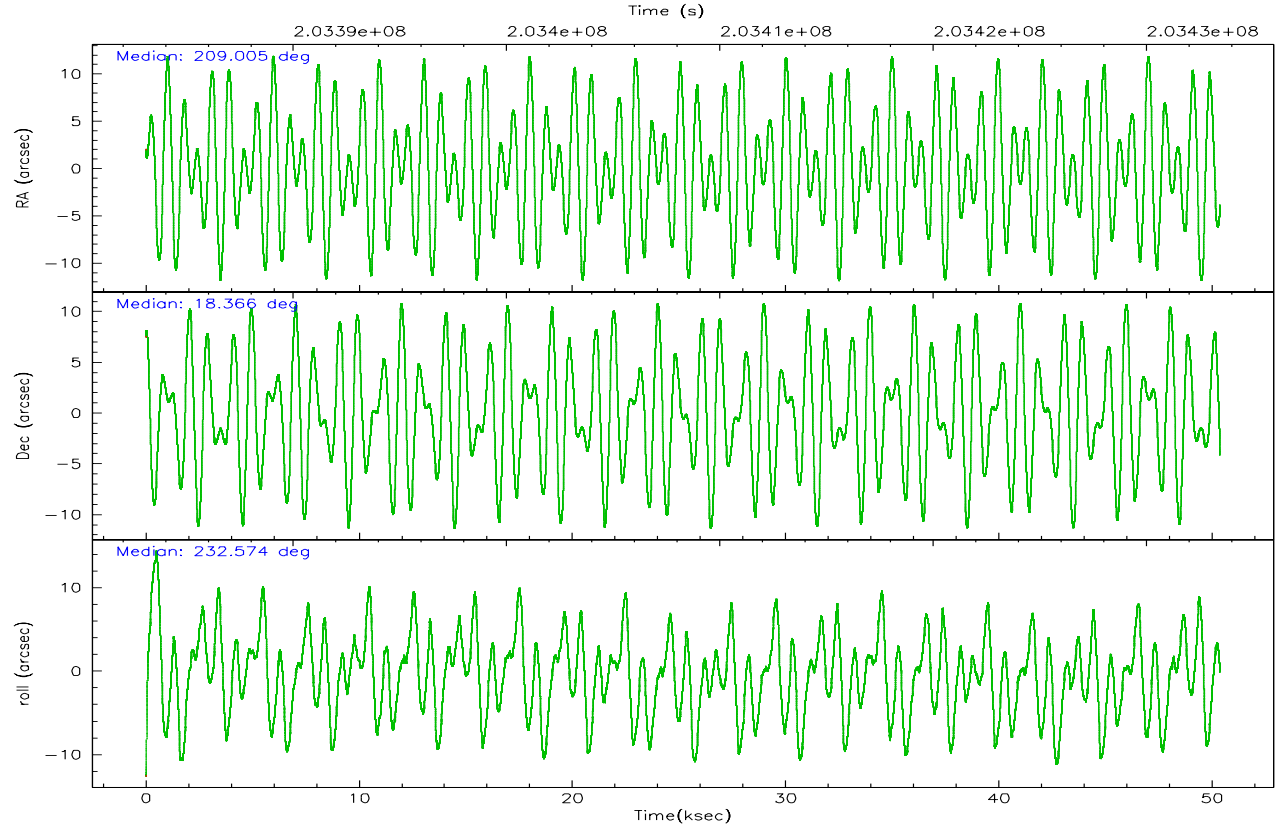
	ccd 2	ccd 3	ccd 5	ccd 6	ccd 7	ccd 8
grade 0 events	18486	17956	10395	17626	12510	30568
	5%	5%	1%	4%	2%	6%
grade 1 events	197	206	525	193	281	320
	0%	0%	0%	0%	0%	0%
grade 2 events	8640	7722	69652	9207	46708	21393
	2%	2%	13%	2%	9%	4%
grade 3 events	3996	3960	5298	4236	9583	10101
	1%	1%	1%	1%	1%	2%
grade 4 events	3932	4112	4780	4103	9322	9435
	1%	1%	0%	1%	1%	2%
grade 5 events	14459	15498	24633	16467	31219	21607
	3%	4%	4%	4%	6%	4%
grade 6 events	7055	7242	135387	8799	111236	25069
	1%	2%	25%	2%	22%	5%
grade 7 events	310542	291122	273795	307705	269383	339959
	84%	83%	52%	83%	54%	74%

2.2 Compared Parameters

Parameter	Planned	Actual	Parameter	Planned	Actual
Instrument	ACIS	ACIS	Obspar format version number	6	6
Detector	ACIS-235678	ACIS-235678	Obspar file type	PREDICTED	ACTUAL
Grating	NONE	NONE	Obspar update status	NONE	UPDATED
Data mode	FAINT	FAINT	On-chip summing requested	N	N
Observation mode	POINTING	POINTING	Subarray requested	NONE	NONE
Pointing RA	209.007891	209.0045826957405	Alternating exposures requested	N	N
Pointing Dec	18.392462	18.36543133404292	Primary exposure time	0.000000	3.2
Pointing Roll	232.418385	232.5760534921719			
SIM focus pos (mm)	-0.684267	-0.6828225247311905			
SIM defocus (mm)	0	0.001444936568705701			
SIM translation stage pos (mm)	-190.132523	-190.1400660498719			
SIM translation stage offset (mm)	0	0.00754346686406393			
Observation start time	203383467.184000	203382407.60361			
Observation start date	2004-06-11T23:23:23	2004-06-11T23:06:47			
Observation end time	203433467.184000	203434951.15593			
Observation end date	2004-06-12T13:16:43	2004-06-12T13:42:31			
Read mode	TIMED	TIMED			

2.3 Aspect



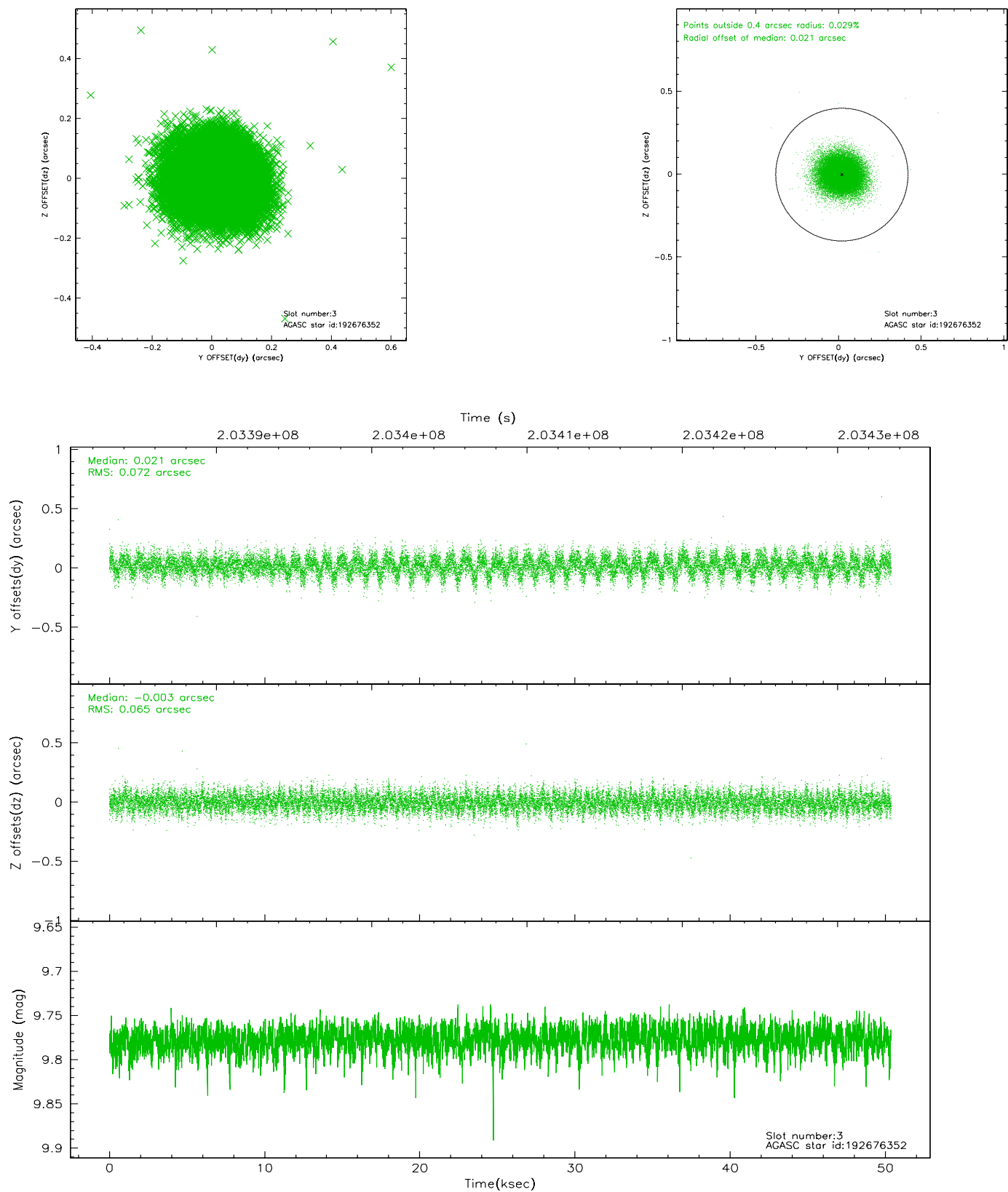


Slot Statistics

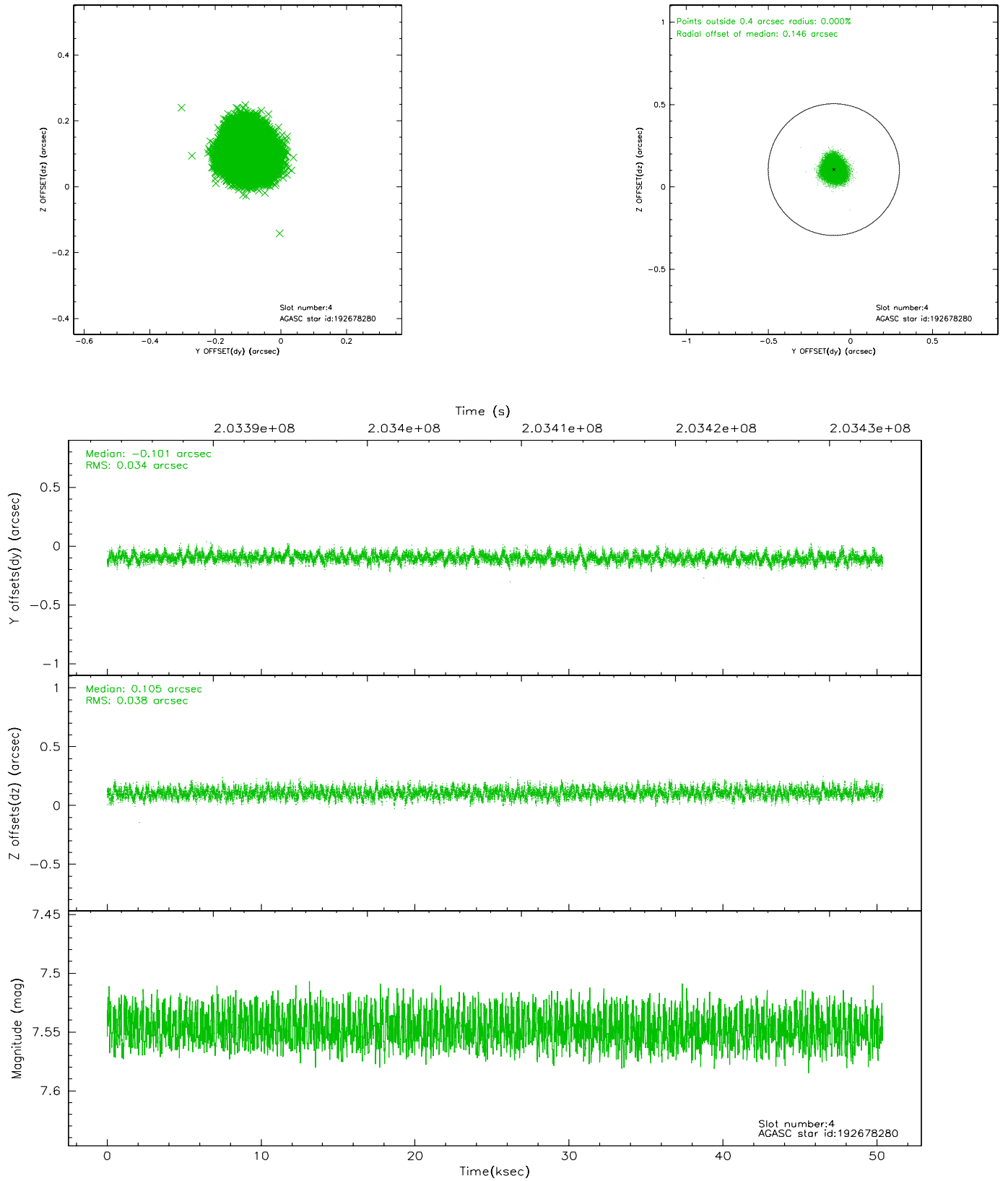
slot	status	id	mag	n_pts	med_dy	med_dz	dr1	dr2	ra	dec	mean_y	mean_z
0	FID	ACIS-S-2	7.10	12287	-0.037	-0.023	0.007	0.011	0.000000	0.000000	-758.59	-1730.12
1	FID	ACIS-S-4	7.21	12286	0.051	0.024	0.005	0.009	0.000000	0.000000	2154.79	178.42
2	FID	ACIS-S-5	7.23	12286	-0.045	0.008	0.007	0.012	0.000000	0.000000	-1811.46	172.07
3	GUIDE	192676352	9.78	24554	0.021	-0.003	0.103	0.166	208.584068	18.171137	1514.84	-663.73
4	GUIDE	192678280	7.55	24569	-0.101	0.105	0.054	0.087	209.396717	18.260570	-435.11	1342.34
5	GUIDE	192681136	9.77	24558	-0.107	-0.007	0.112	0.181	209.224237	18.950007	-2040.08	-640.58
6	GUIDE	192682712	9.59	24562	0.095	0.120	0.108	0.174	209.161472	17.691572	1678.62	1956.13
7	GUIDE	192681008	10.09	24468	0.092	-0.217	0.122	0.202	208.704210	18.398710	614.67	-836.33

2.4 Star Slots

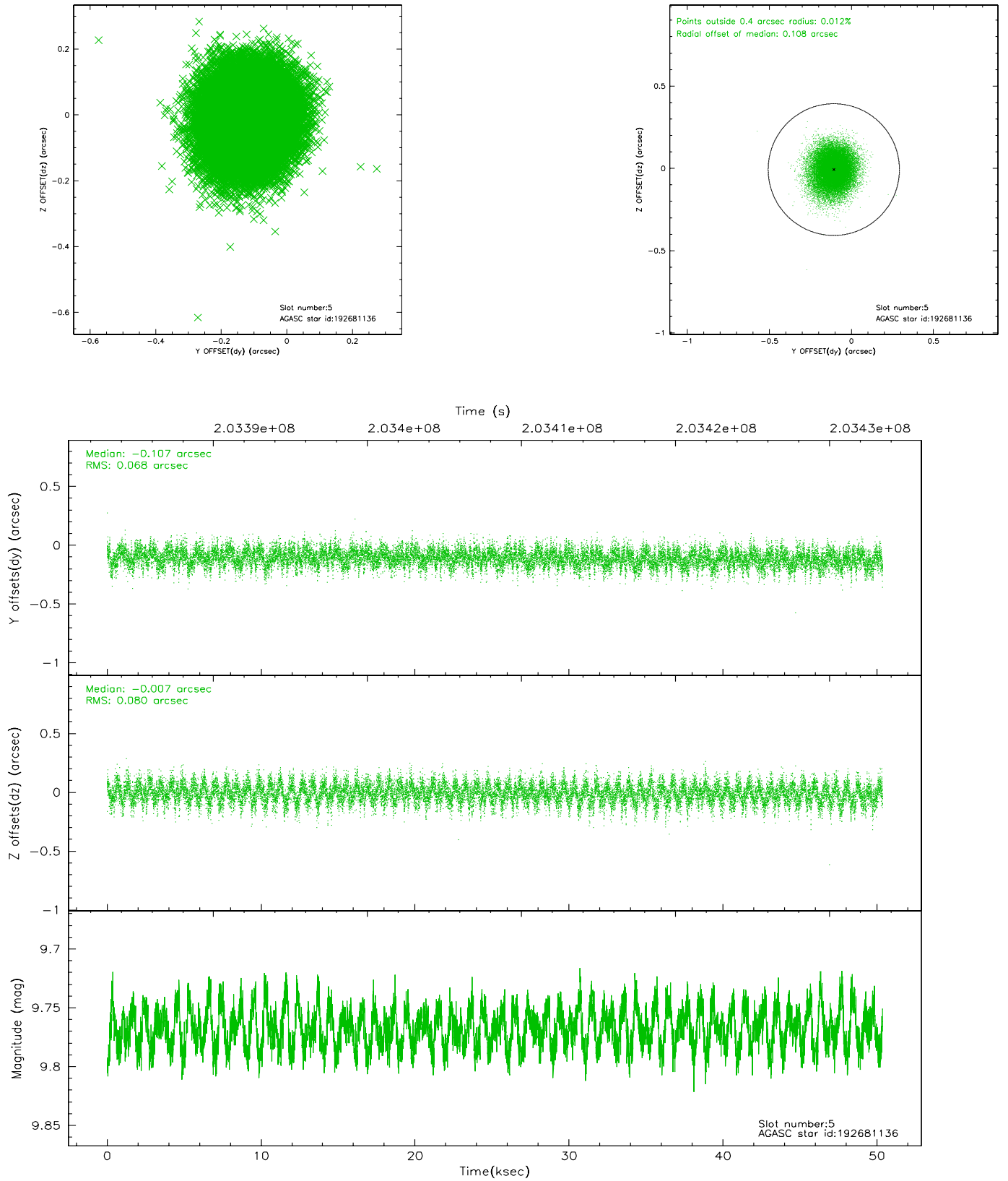
2.4.1 Slot 3



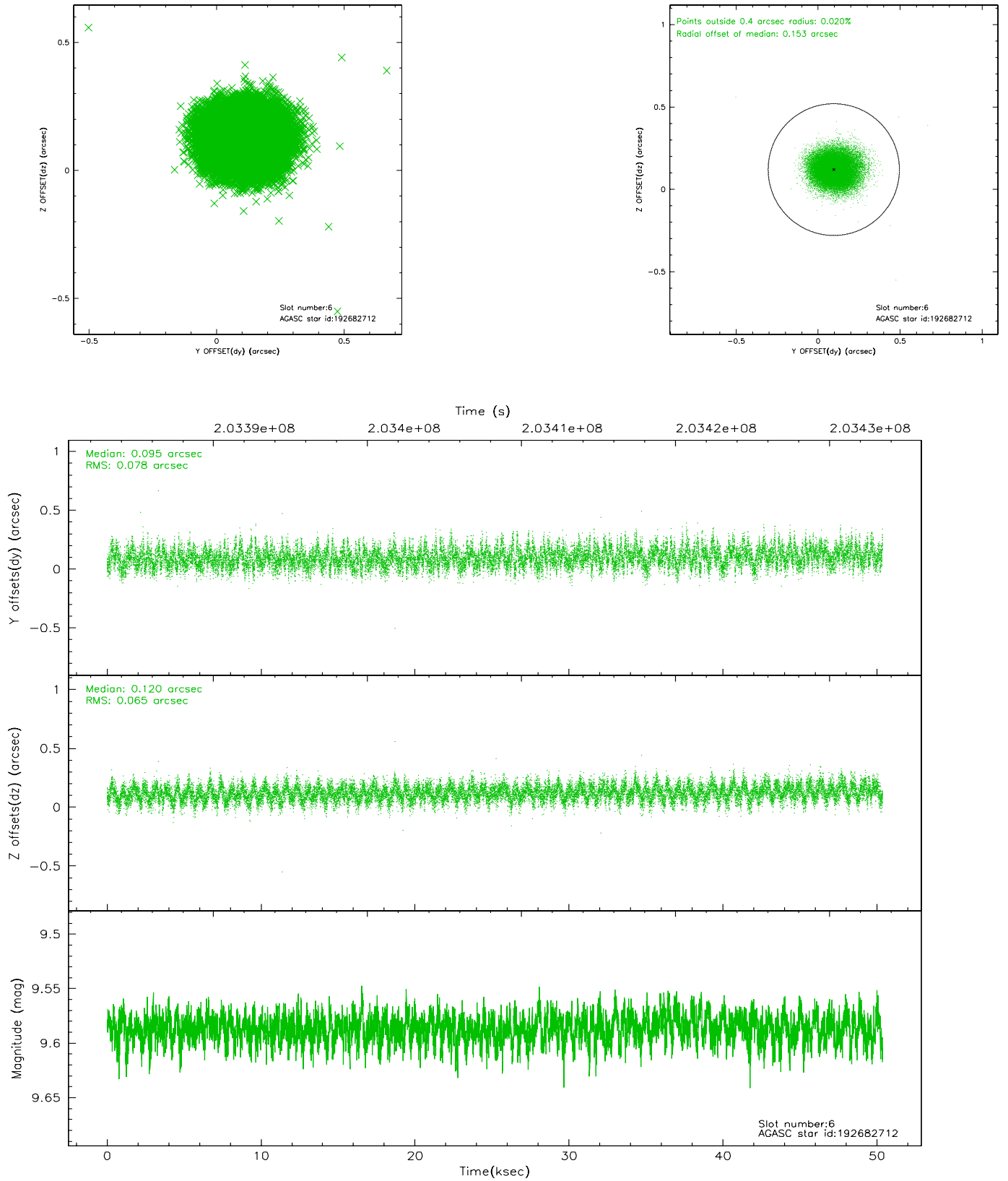
2.4.2 Slot 4



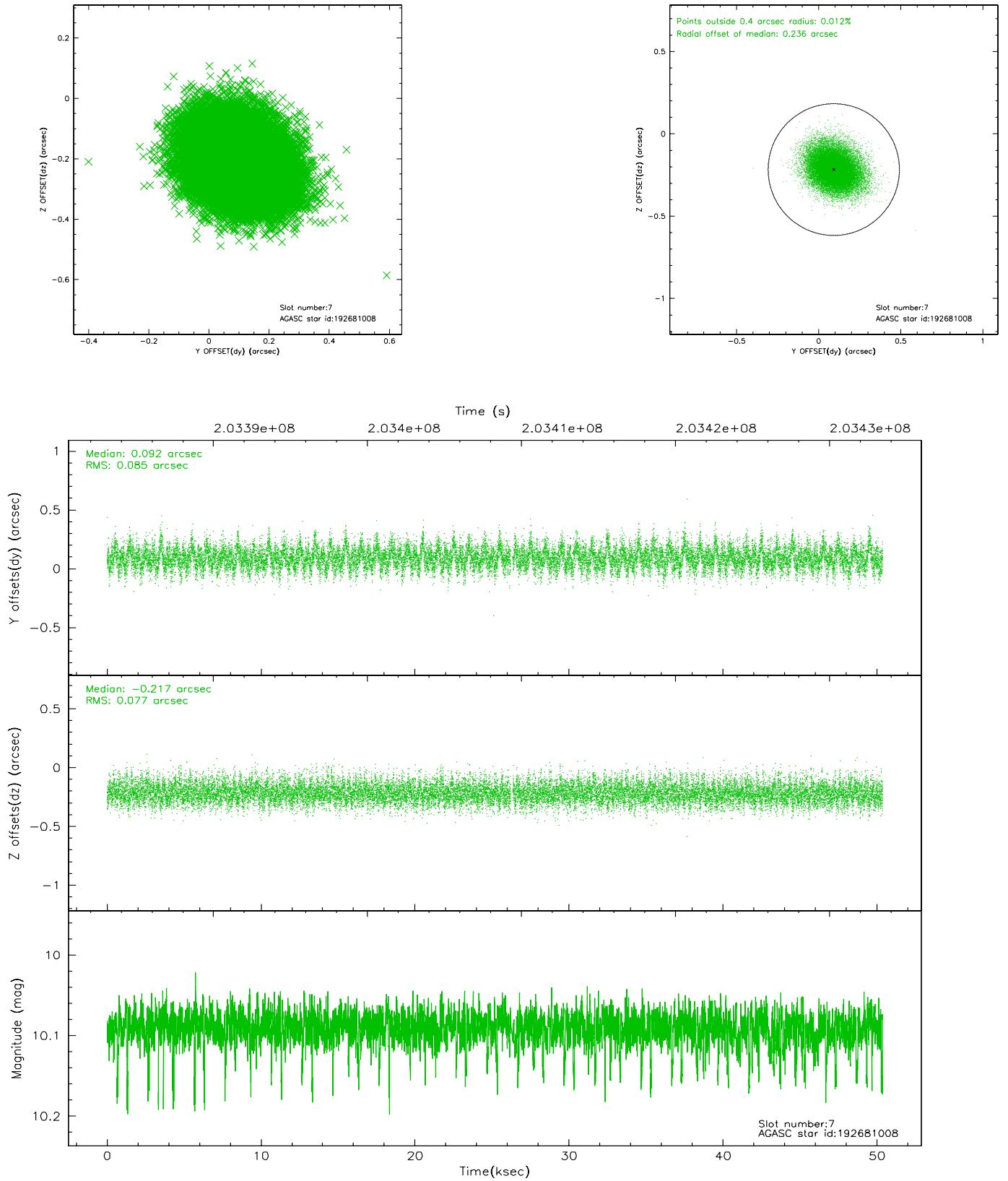
2.4.3 Slot 5



2.4.4 Slot 6

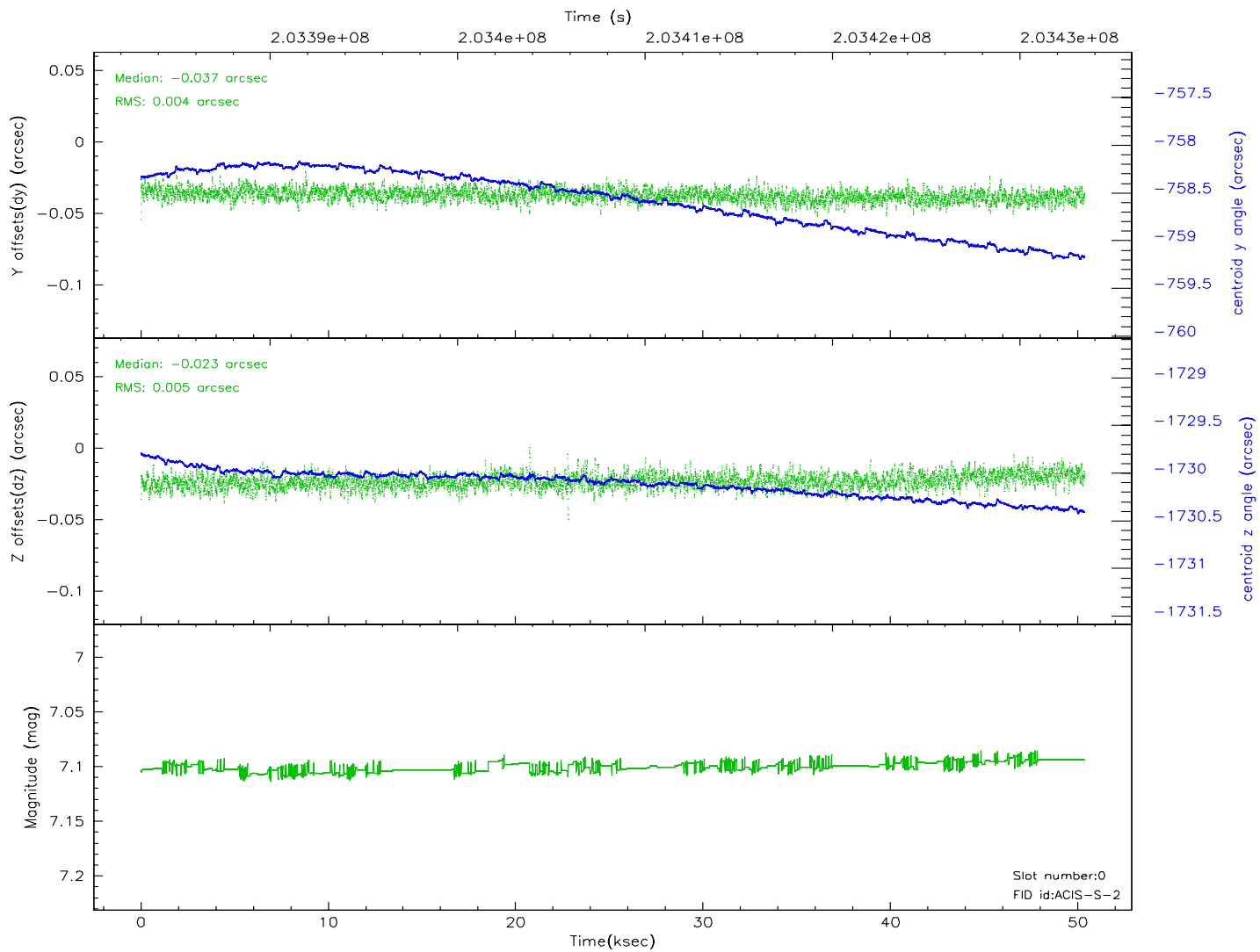
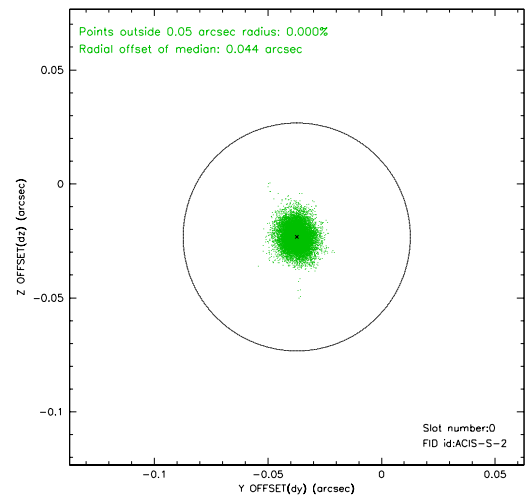
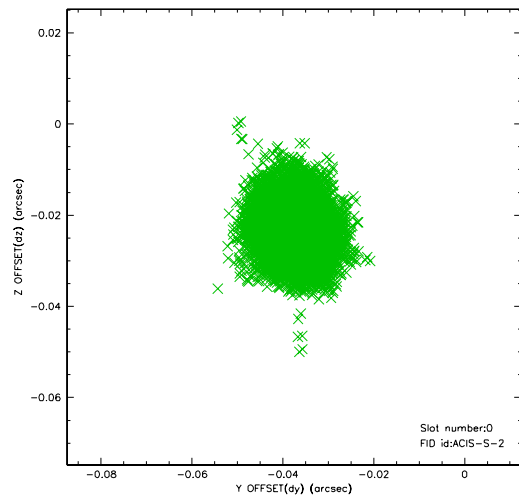


2.4.5 Slot 7

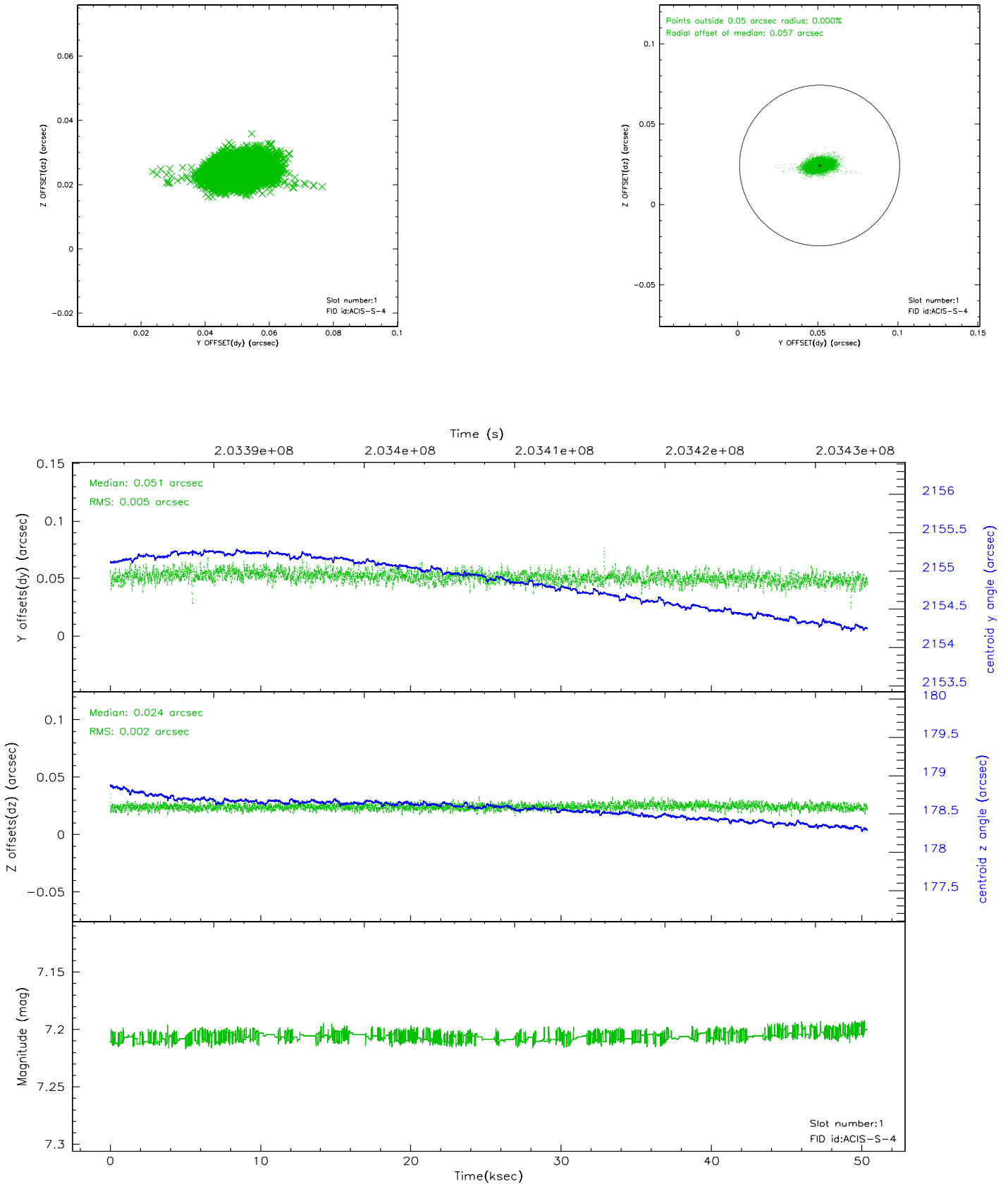


2.5 FID Slots

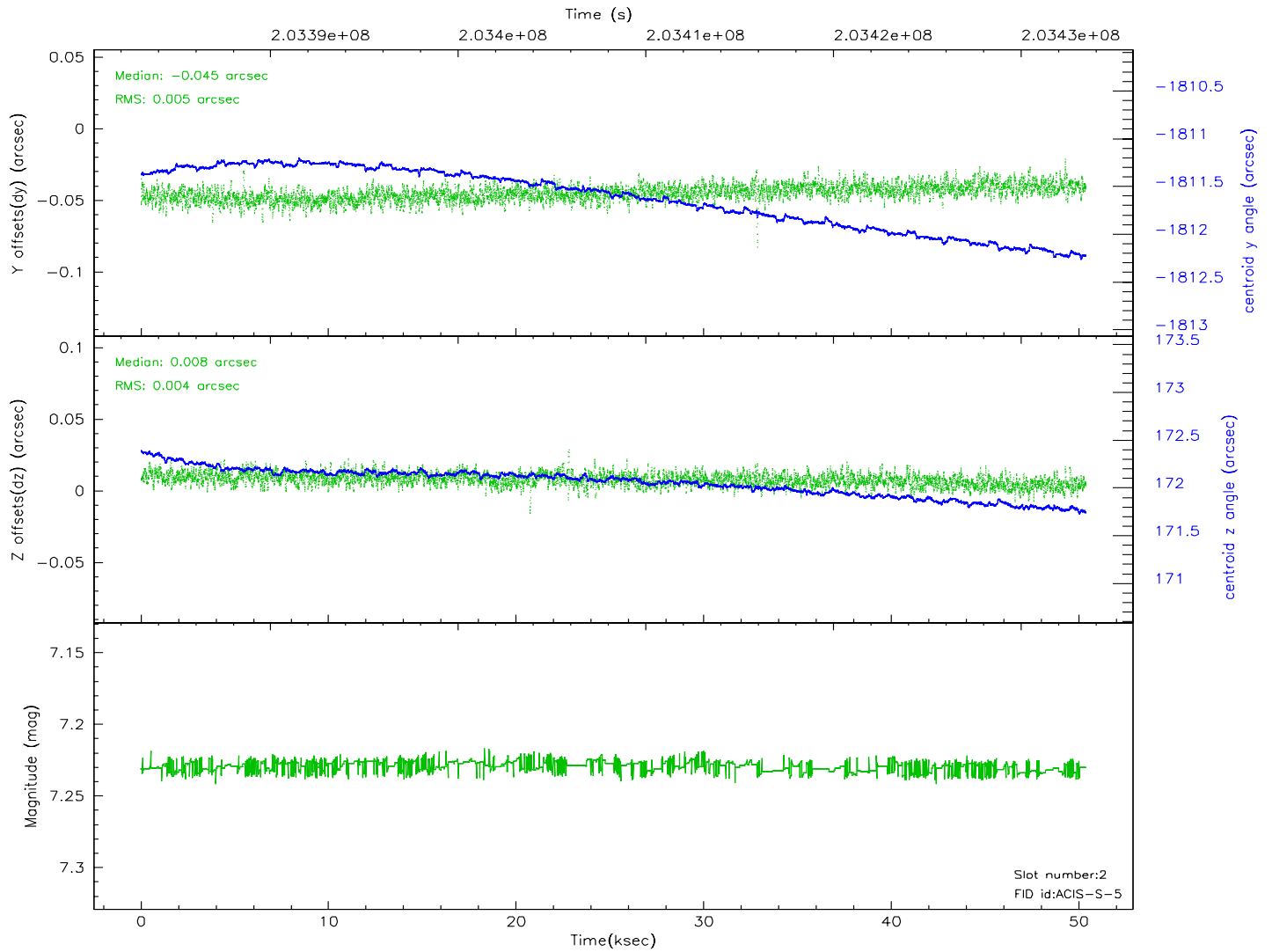
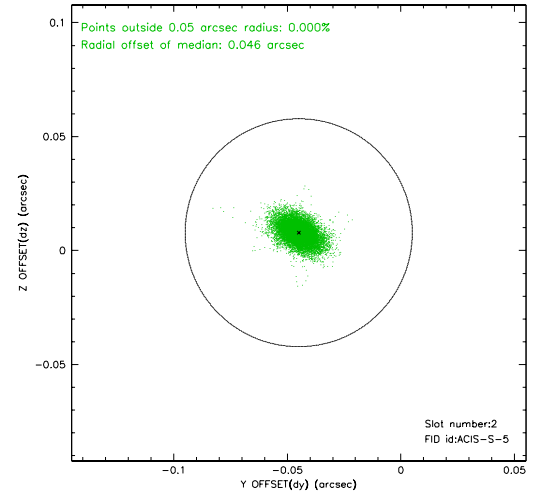
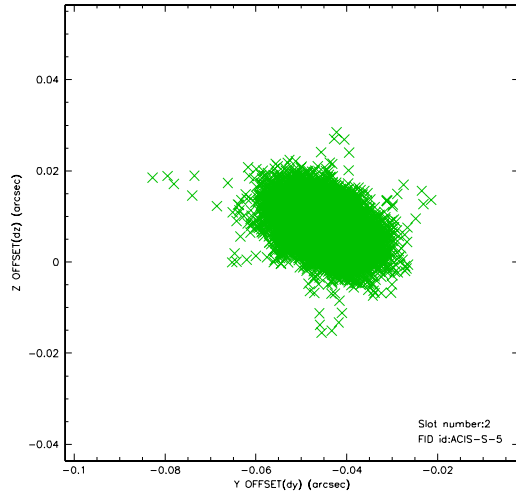
2.5.1 Slot 0



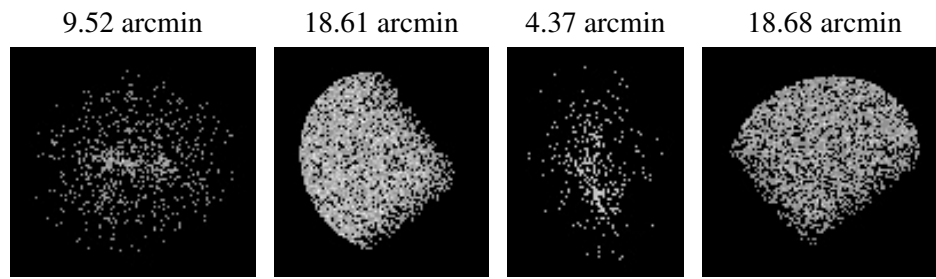
2.5.2 Slot 1



2.5.3 Slot 2



3 Point Sources



A Summary

A.1 Status

V&V Scientist	Jen Lauer
V&V Date (YYYY-MM-DD)	2006.05.01
V&V Edition	1
V&V Disposition and Status	OK
V&V Charge Time	49.961

A.2 Comments

The ACIS focal plane temperature dropped three degrees over the observation, and was outside calibration limits for the first 16 ksec of the observation.