

# V&V Reference Report

## L2 ASCDS Version : 7.6.7.2

Observation 4893 - L2 Version 001  
Chandra X-Ray Center

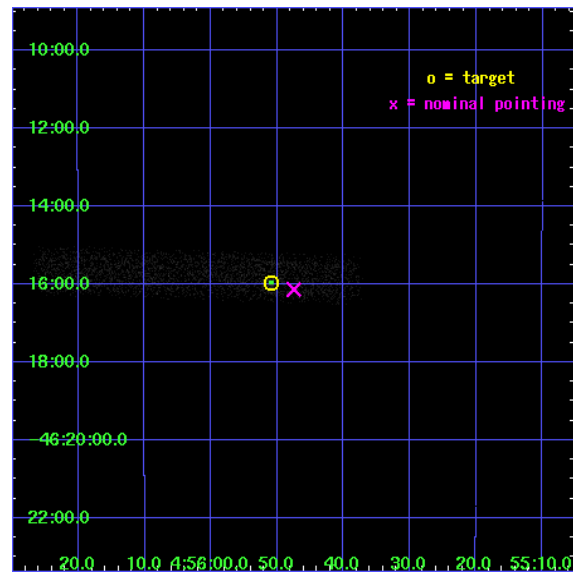
L2 Processing Date : May 1 2006

## Contents

<b>1</b>	<b>Front</b>	<b>2</b>
<b>2</b>	<b>OBI</b>	<b>3</b>
2.1	OBI . . . . .	3
2.1.1	Images . . . . .	3
2.1.2	Bias . . . . .	3
2.1.3	Parameters . . . . .	4
2.1.4	Events . . . . .	4
2.2	Compared Parameters . . . . .	5
2.3	Aspect . . . . .	6
2.4	Star Slots . . . . .	9
2.4.1	Slot 3 . . . . .	9
2.4.2	Slot 4 . . . . .	10
2.4.3	Slot 5 . . . . .	11
2.4.4	Slot 6 . . . . .	12
2.4.5	Slot 7 . . . . .	13
2.5	FID Slots . . . . .	14
2.5.1	Slot 0 . . . . .	14
2.5.2	Slot 1 . . . . .	15
2.5.3	Slot 2 . . . . .	16
<b>3</b>	<b>Point Sources</b>	<b>17</b>
<b>A</b>	<b>Summary</b>	<b>18</b>
A.1	Status . . . . .	18
A.2	Comments . . . . .	18

# 1 Front

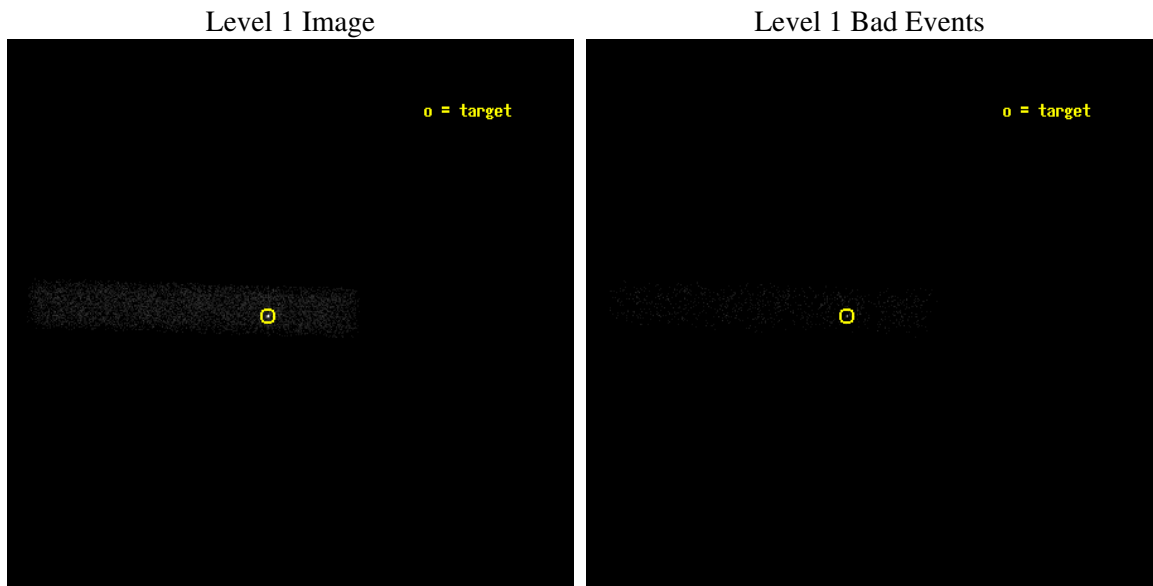
seq_num	700975
obs_id	4893
title	Continuing a Flux-limited Survey for X-ray Emission from Radio Jets
observer	Dr. Herman Marshall
object	0454-463
dtcycle	0
cycle	P
ra_targ	73.961667
dec_targ	-46.266306
ra_nom	73.947905565992
dec_nom	-46.269067213989
roll_nom	181.67267745228
revision	2
ontime	6368.0000948906
livetime	5775.4399554604
ontime7	6368.0000948906
l2events	5907



## 2 OBI

### 2.1 OBI

#### 2.1.1 Images



#### 2.1.2 Bias

Chip 7



### 2.1.3 Parameters

obi_num	0
ascdsver	7.6.7.2
caldbver	3.2.1
date	2006-05-01T10:26:43
revision	2

sched_exp_time	6195.744000
ontime	7197.2433282137
ontime7	7197.2433282137
l1events	12080

### 2.1.4 Events

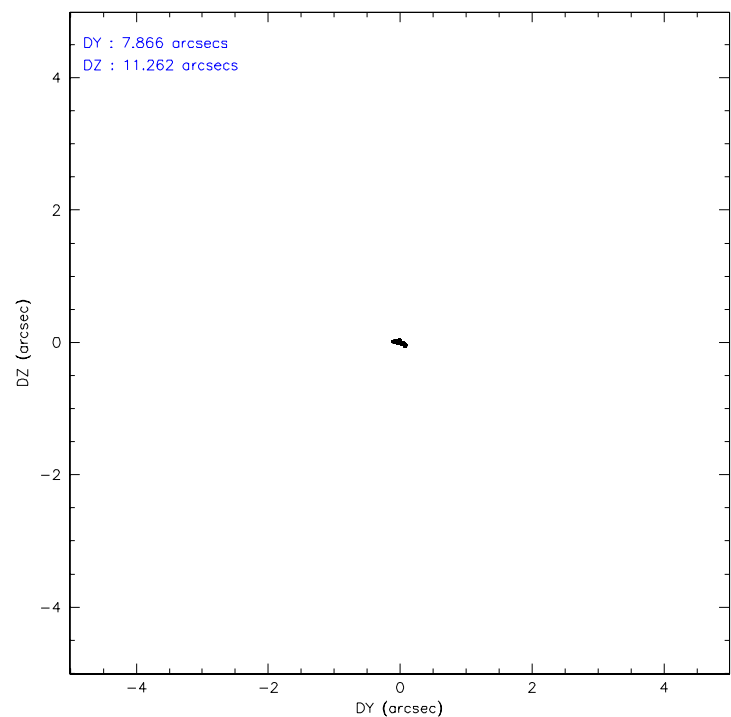
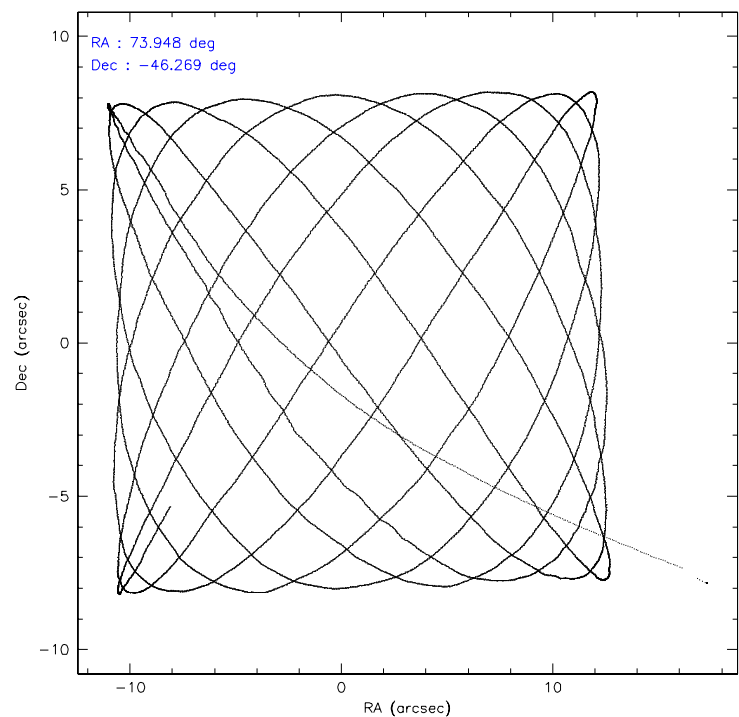
	<b>ccd 7</b>
level 1 events	12080
rejected events	5927
rejected %	49%

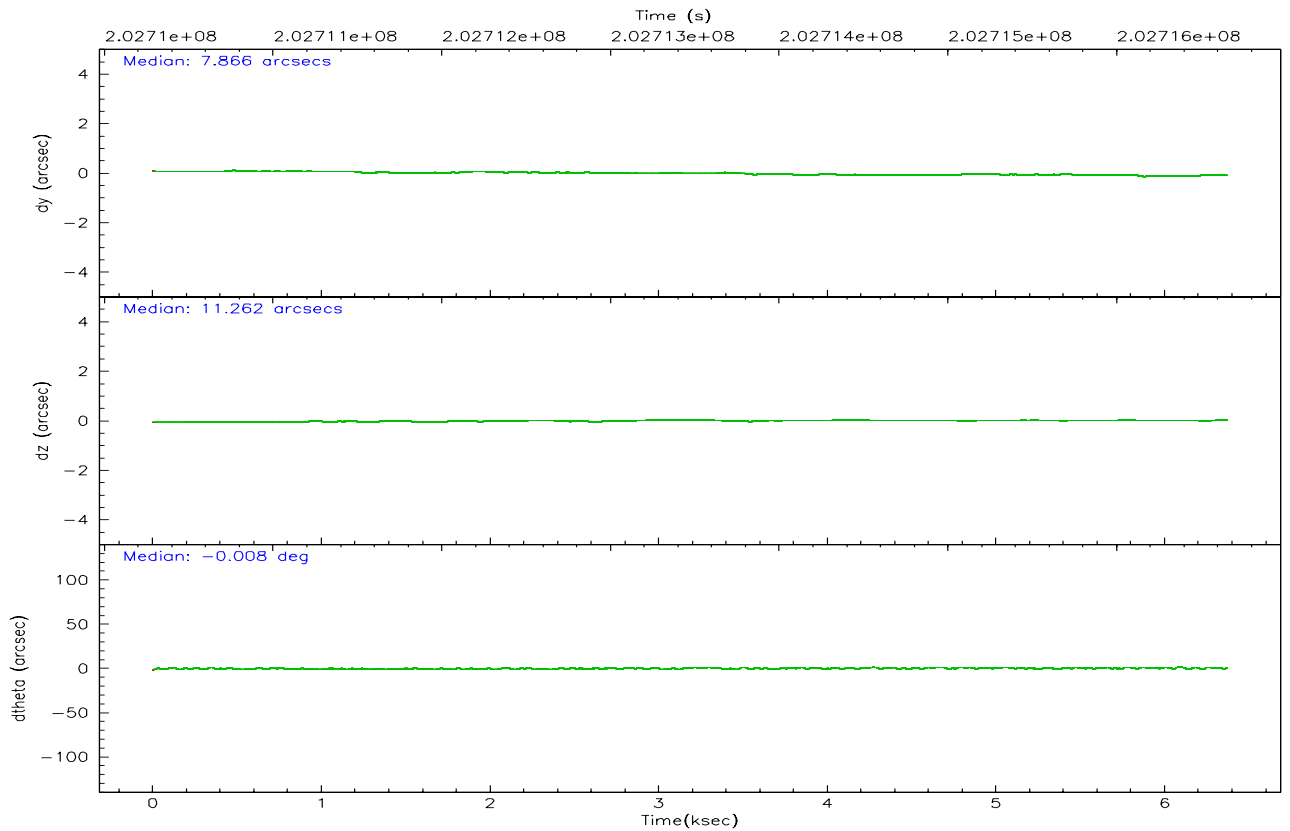
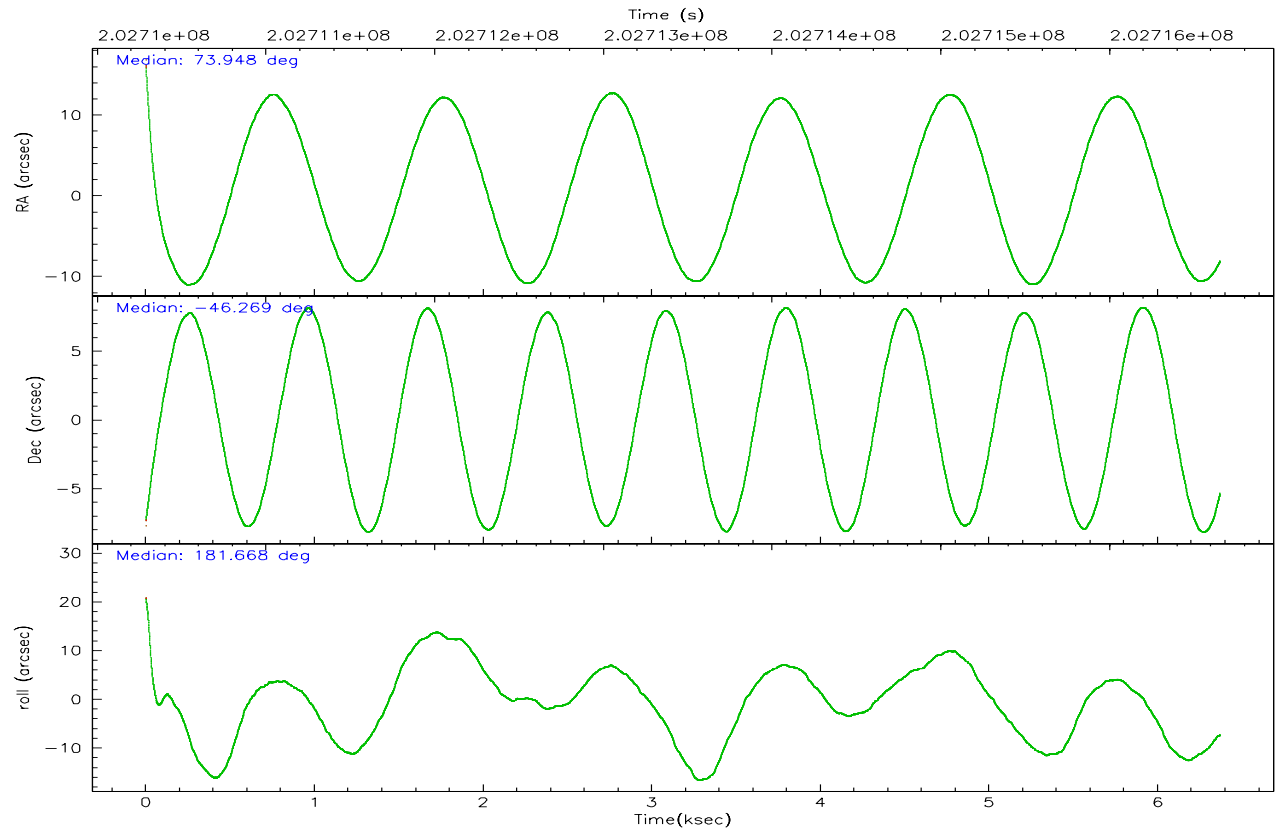
	<b>ccd 7</b>
grade 0 events	1020
	8%
grade 1 events	13
	0%
grade 2 events	1453
	12%
grade 3 events	777
	6%
grade 4 events	699
	5%
grade 5 events	786
	6%
grade 6 events	2731
	22%
grade 7 events	4601
	38%

## 2.2 Compared Parameters

Parameter	Planned	Actual	Parameter	Planned	Actual
Instrument	ACIS	ACIS	Obspar format version number	6	6
Detector	ACIS-7	ACIS-7	Obspar file type	PREDICTED	ACTUAL
Grating	NONE	NONE	Obspar update status	NONE	UPDATED
Data mode	FAINT	FAINT	On-chip summing requested	N	N
Observation mode	POINTING	POINTING	Subarray requested	CUSTOM	1/8
Pointing RA	73.981225	73.94790556599163	Subarray start row	1	1
Pointing Dec	-46.254444	-46.26906721398861	Subarray row count	128	128
Pointing Roll	181.540117	181.6726774522826	Alternating exposures requested	N	N
SIM focus pos (mm)	-0.684267	-0.6828225247311905	Primary exposure time	0.000000	0.4
SIM defocus (mm)	0	0.001444936568705701			
SIM translation stage pos (mm)	-178.632523	-178.6370735452349			
SIM translation stage offset (mm)	-11.5	-11.49544903777291			
Observation start time	202710463.184000	202709432.03634			
Observation start date	2004-06-04T04:26:39	2004-06-04T04:10:32			
Observation end time	202716659.184000	202717566.4367			
Observation end date	2004-06-04T06:09:55	2004-06-04T06:26:06			
Read mode	TIMED	TIMED			

2.3 Aspect





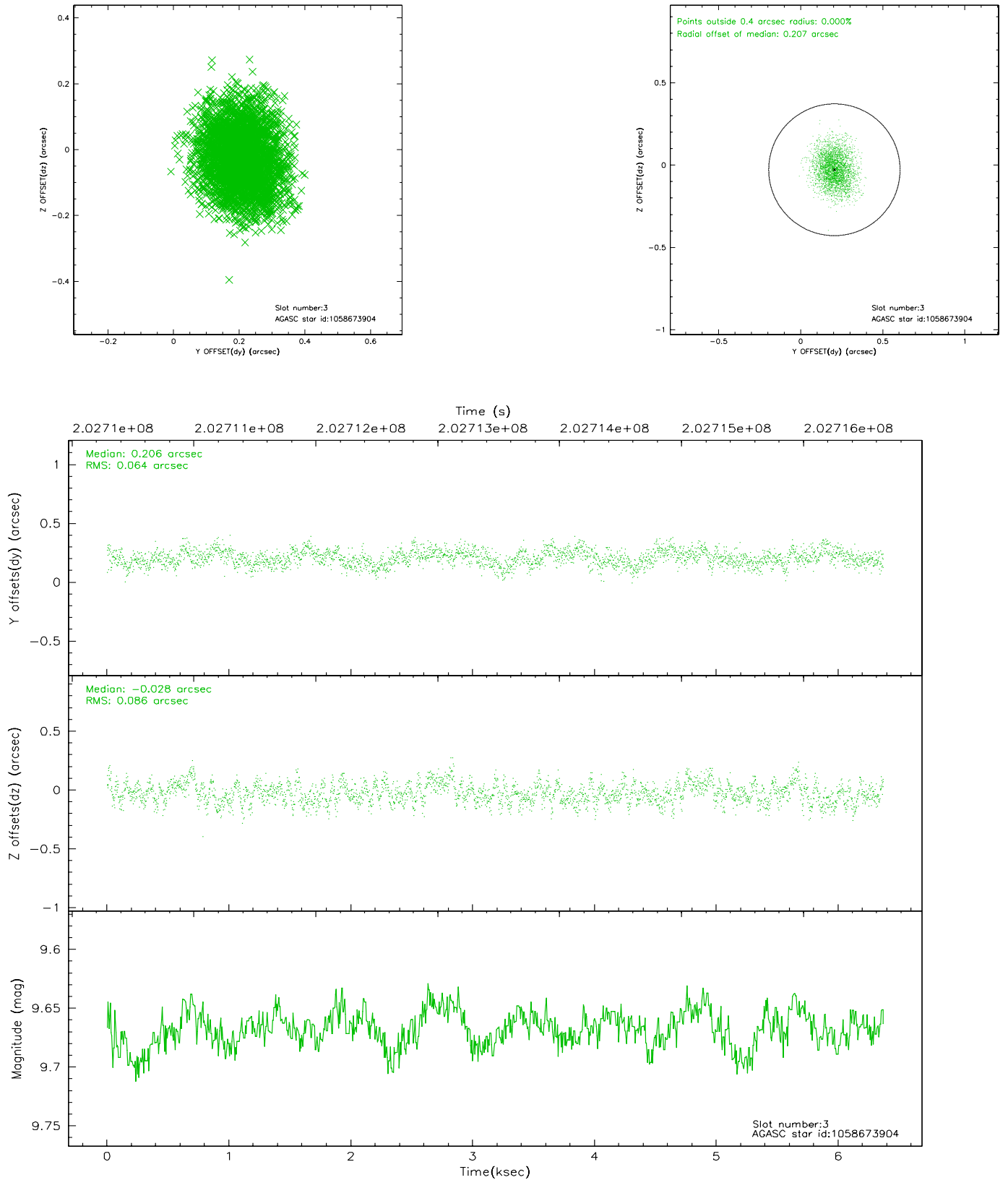
### Slot Statistics

slot	status	id	mag	n_pts	med_dy	med_dz	dr1	dr2	ra	dec	mean_y	mean_z
0	FID	ACIS-S-1	7.18	1554	-0.005	0.239	0.007	0.012	0.000000	0.000000	936.35	-1964.53
1	FID	ACIS-S-2	7.08	1554	-0.126	-0.150	0.006	0.009	0.000000	0.000000	-759.16	-1970.65
2	FID	ACIS-S-6	7.42	1554	0.110	-0.086	0.006	0.011	0.000000	0.000000	401.59	575.34
3	GUIDE	1058673904	9.67	3106	0.206	-0.028	0.115	0.187	74.386320	-45.766237	-1063.86	-1726.88
4	GUIDE	1058673960	8.84	3107	-0.017	-0.035	0.063	0.104	74.061999	-46.449909	-181.85	708.53
5	GUIDE	1058675616	7.50	3108	-0.139	0.080	0.053	0.083	74.181408	-46.534858	-468.78	1023.57
6	GUIDE	1058676152	9.63	3105	0.051	-0.108	0.097	0.160	73.691951	-46.367095	729.06	387.92
7	GUIDE	1058681848	9.85	3103	-0.098	0.094	0.107	0.180	74.898802	-45.695942	-2359.89	-1934.42

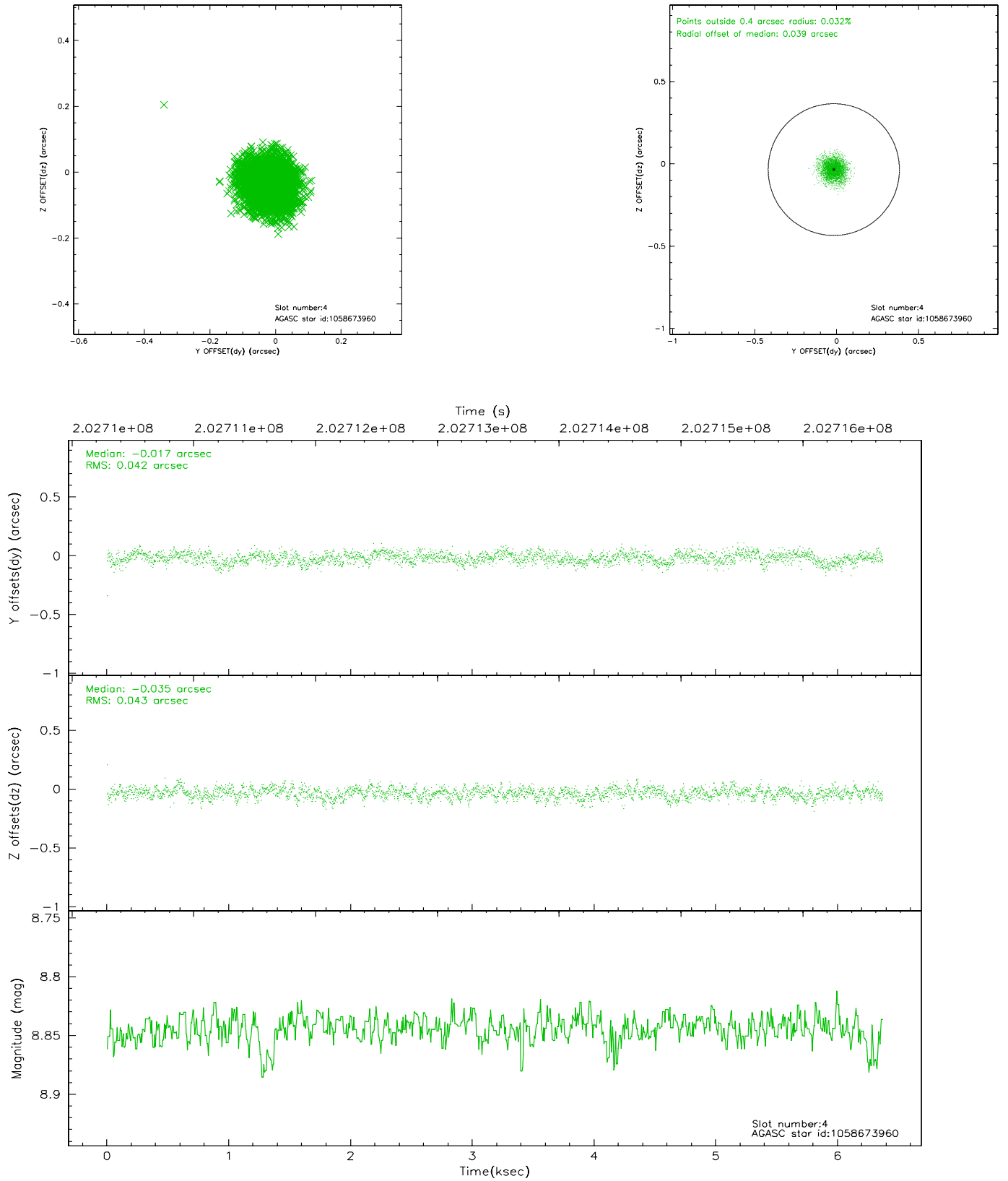


## 2.4 Star Slots

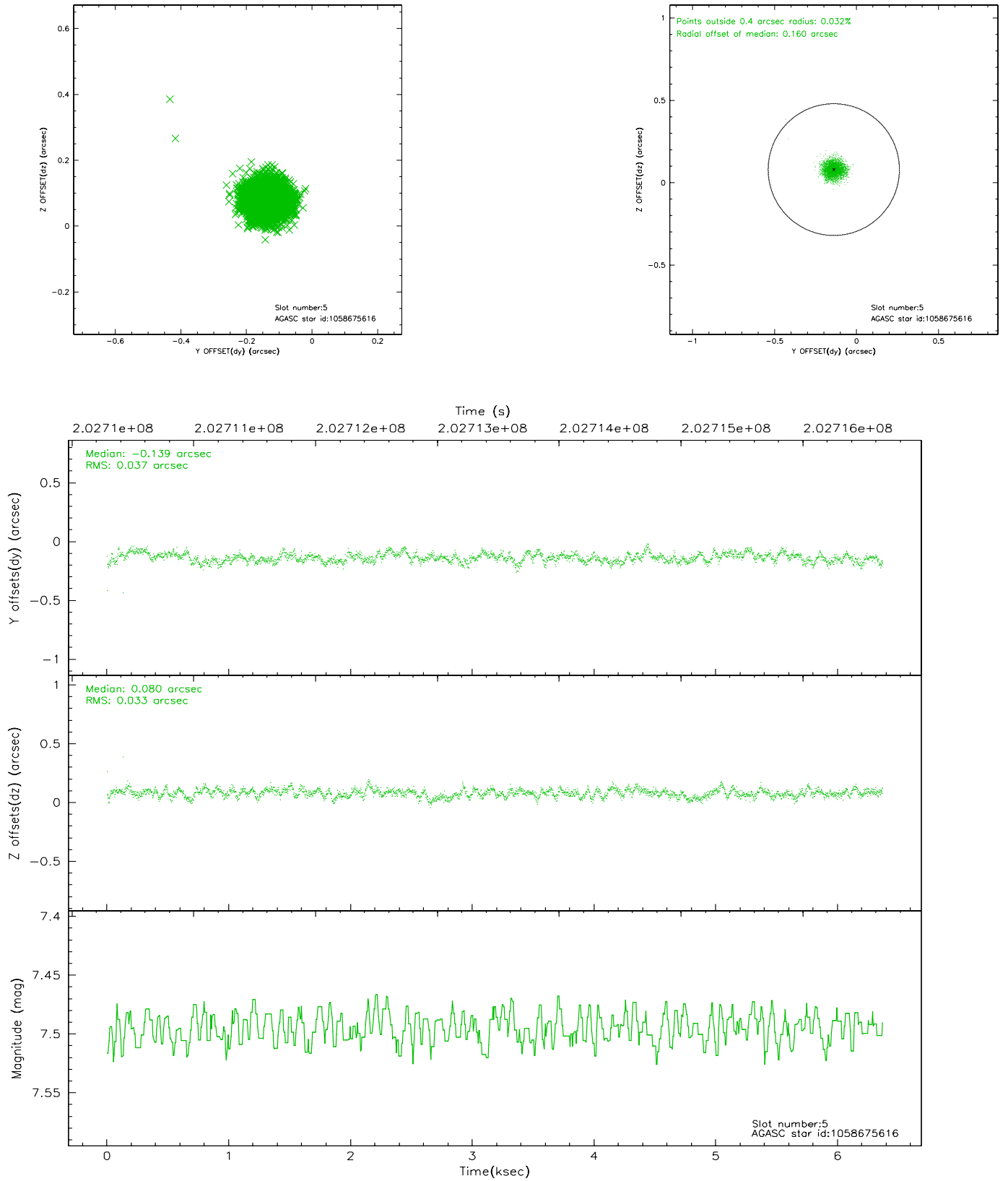
### 2.4.1 Slot 3



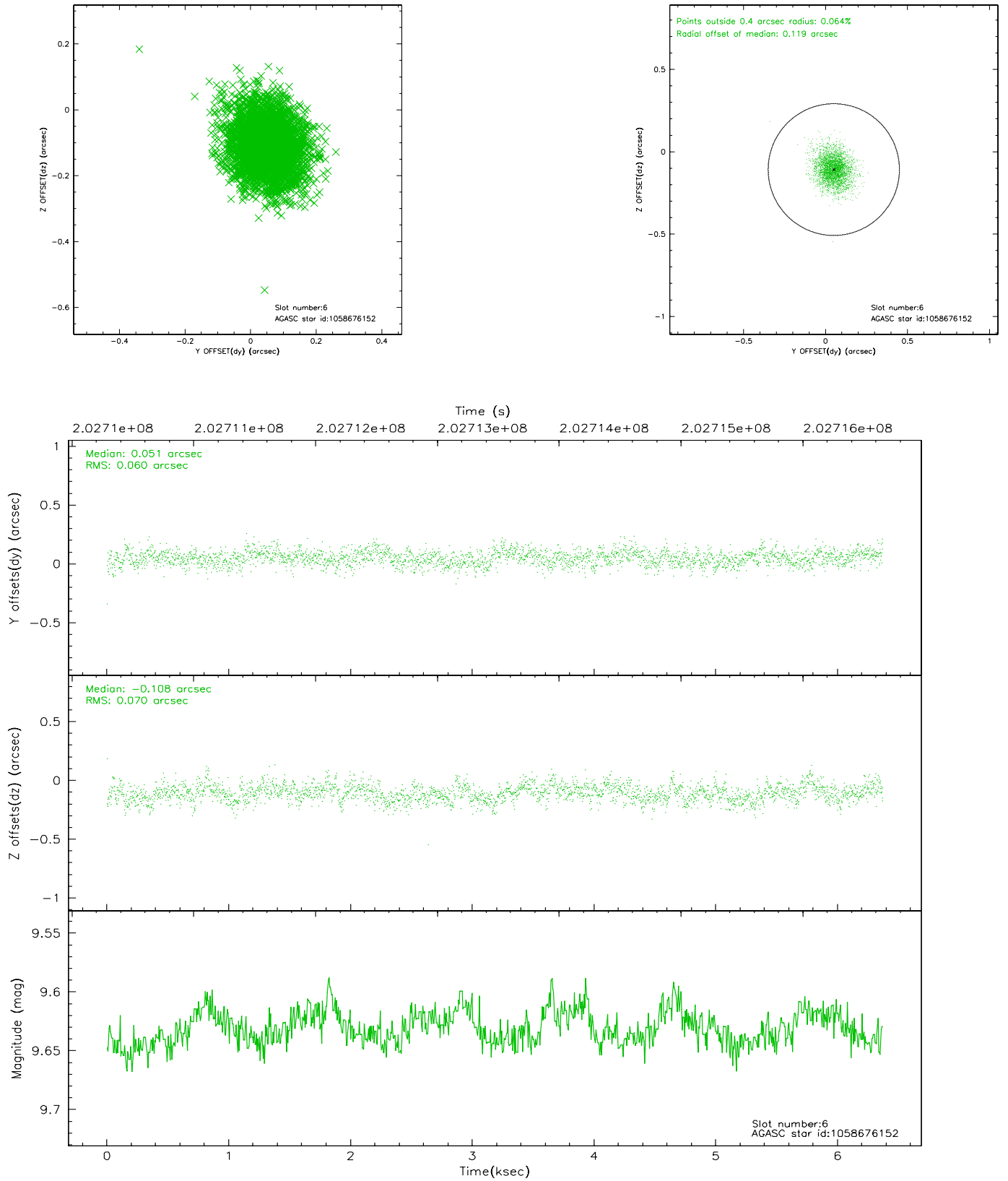
## 2.4.2 Slot 4



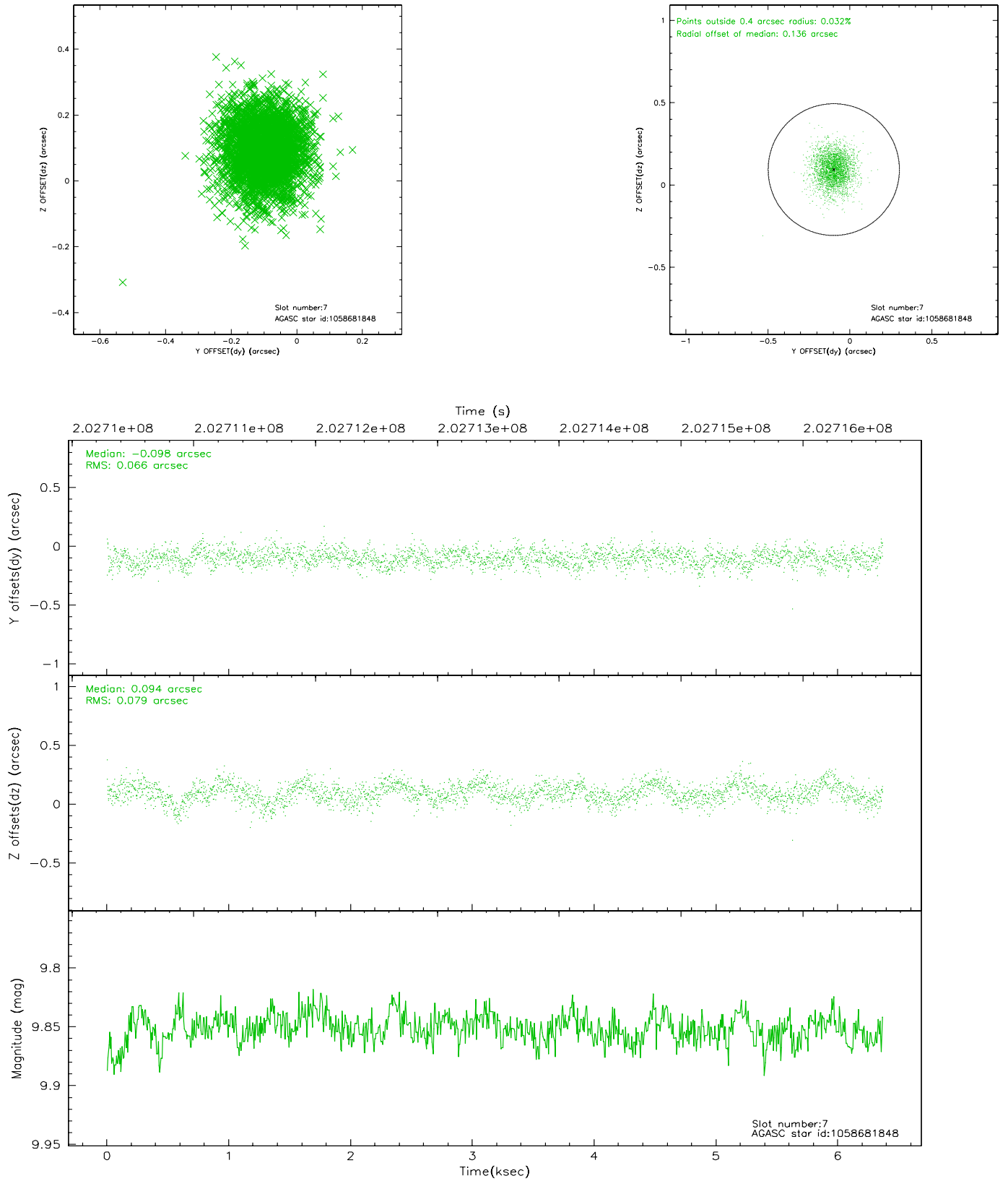
### 2.4.3 Slot 5



## 2.4.4 Slot 6

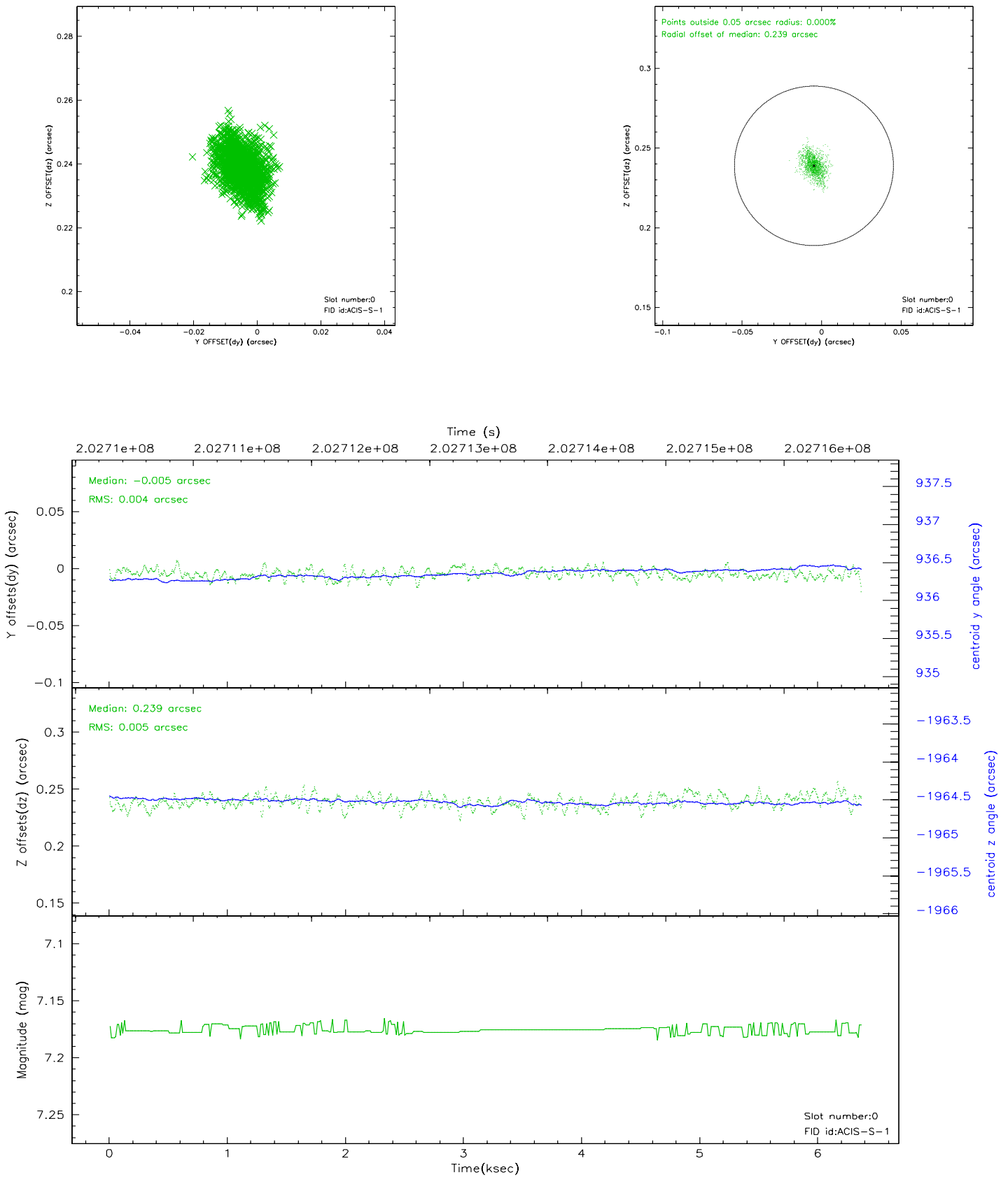


## 2.4.5 Slot 7

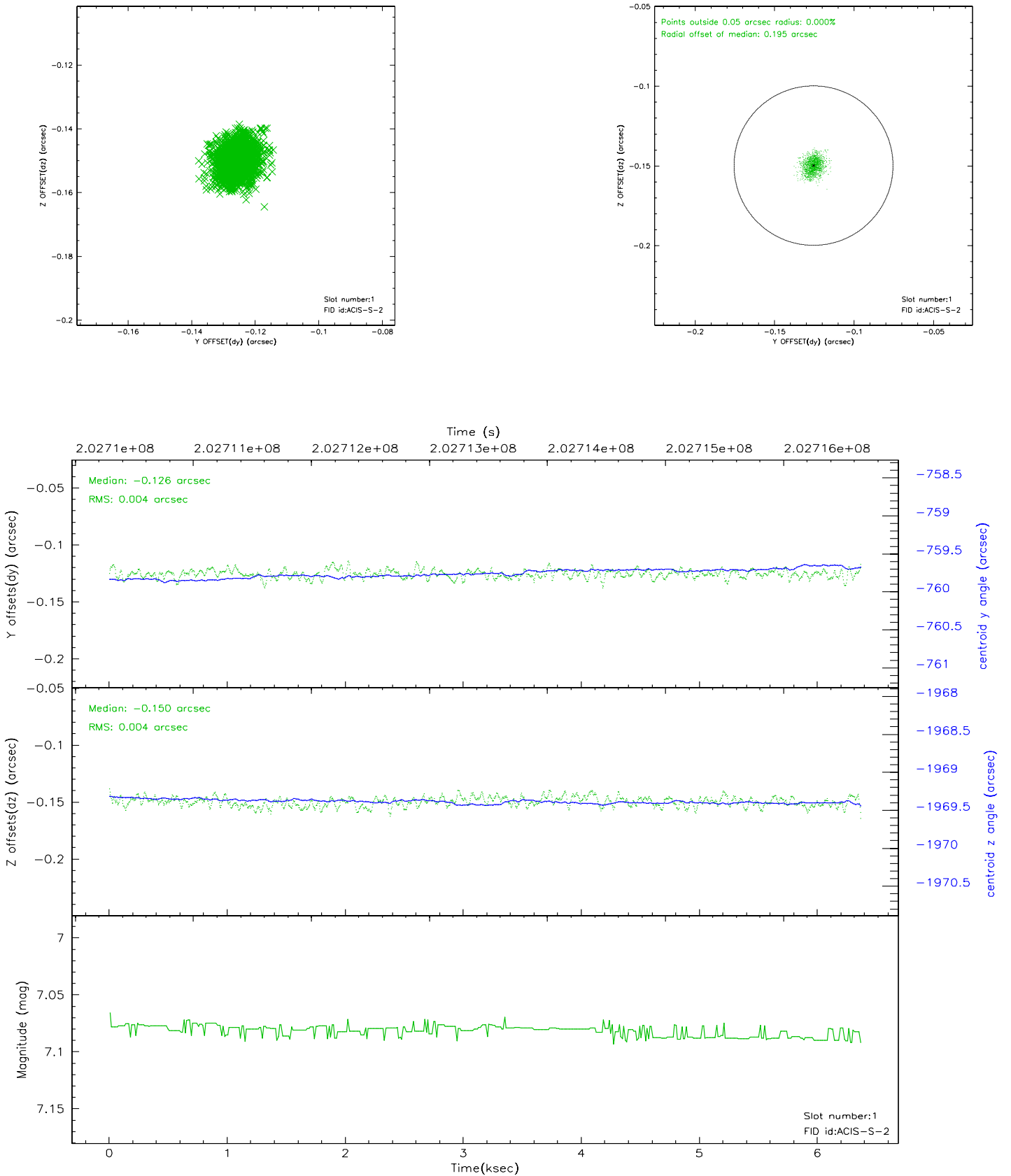


## 2.5 FID Slots

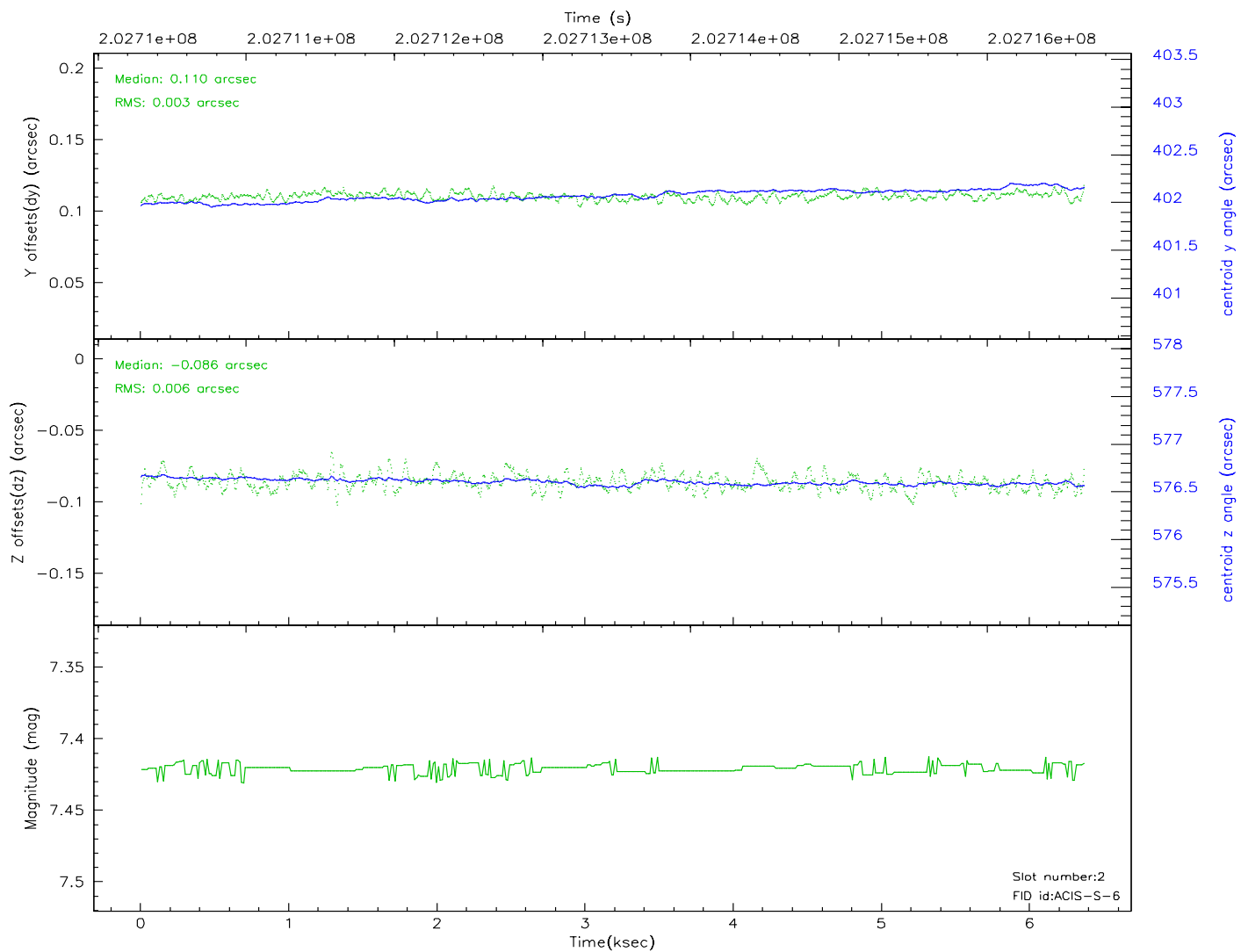
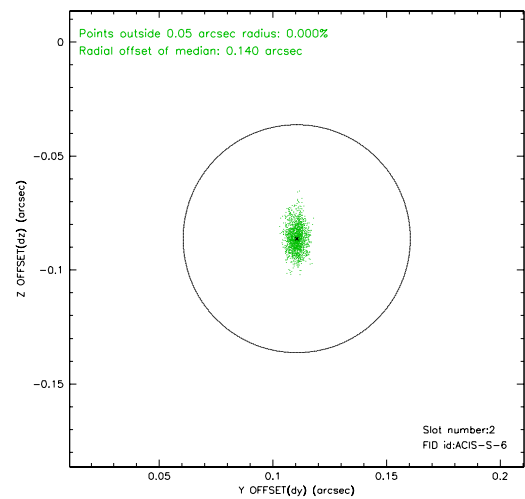
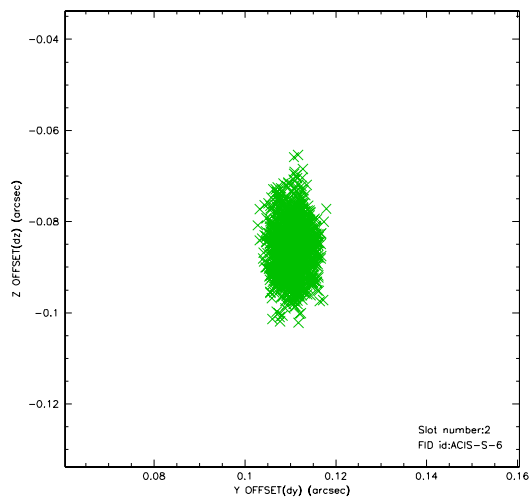
### 2.5.1 Slot 0



## 2.5.2 Slot 1



### 2.5.3 Slot 2





### 3 Point Sources

## A Summary

### A.1 Status

V&V Scientist	Jen Lauer
V&V Date (YYYY-MM-DD)	2006.05.01
V&V Edition	1
V&V Disposition and Status	OK
V&V Charge Time	6.368

### A.2 Comments