

V&V Reference Report

L2 ASCDS Version : 7.6.7

Observation 4873 - L2 Version 002
Chandra X-Ray Center

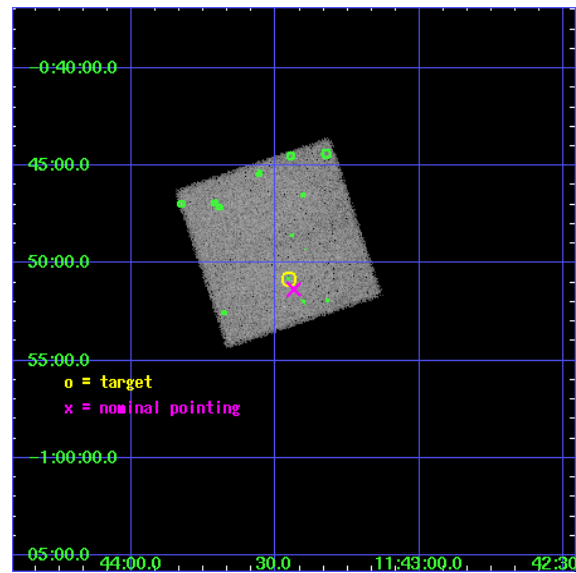
L2 Processing Date: Feb 28 2006

Contents

1	Front	2
2	OBI	3
2.1	OBI	3
2.1.1	Images	3
2.1.2	Bias	3
2.1.3	Parameters	4
2.1.4	Events	4
2.2	Compared Parameters	5
2.3	Aspect	6
2.4	Star Slots	9
2.4.1	Slot 3	9
2.4.2	Slot 4	10
2.4.3	Slot 5	11
2.4.4	Slot 6	12
2.4.5	Slot 7	13
2.5	FID Slots	14
2.5.1	Slot 0	14
2.5.2	Slot 1	15
2.5.3	Slot 2	16
3	Point Sources	17
A	Summary	18
A.1	Status	18
A.2	Comments	18

1 Front

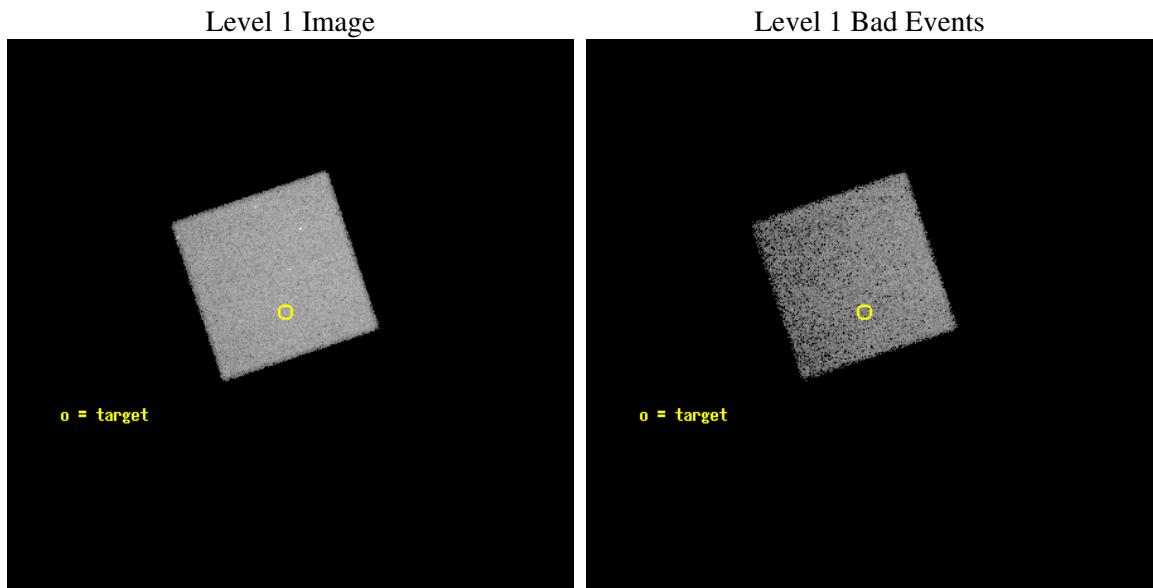
seq_num	700955
obs_id	4873
title	UNCOVERING THE HIDDEN POPULATION OF BL LACS
observer	Dr Nicola Loaring
object	2QZ J114327.3-005050
dtcycle	0
cycle	P
ra_targ	175.86375
dec_targ	-0.847389
ra_nom	175.85914984848
dec_nom	-0.85586382983251
roll_nom	251.47059740961
revision	2
ontime	14330.959009707
livetime	14137.557226844
ontime7	14330.959009707
l2events	92864



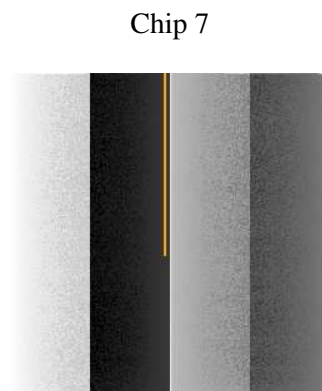
2 OBI

2.1 OBI

2.1.1 Images



2.1.2 Bias



2.1.3 Parameters

obi_num	1
ascdsver	7.6.7
caldbver	3.2.1
date	2006-02-28T21:35:54
revision	2

sched_exp_time	14161.250000
ontime	15530.452135384
ontime7	15530.452135384
l1events	204378

2.1.4 Events

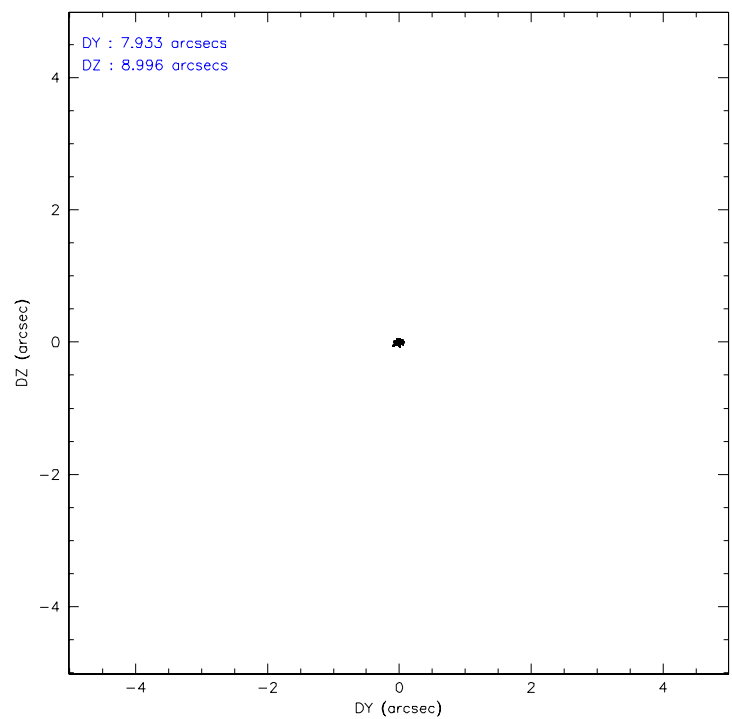
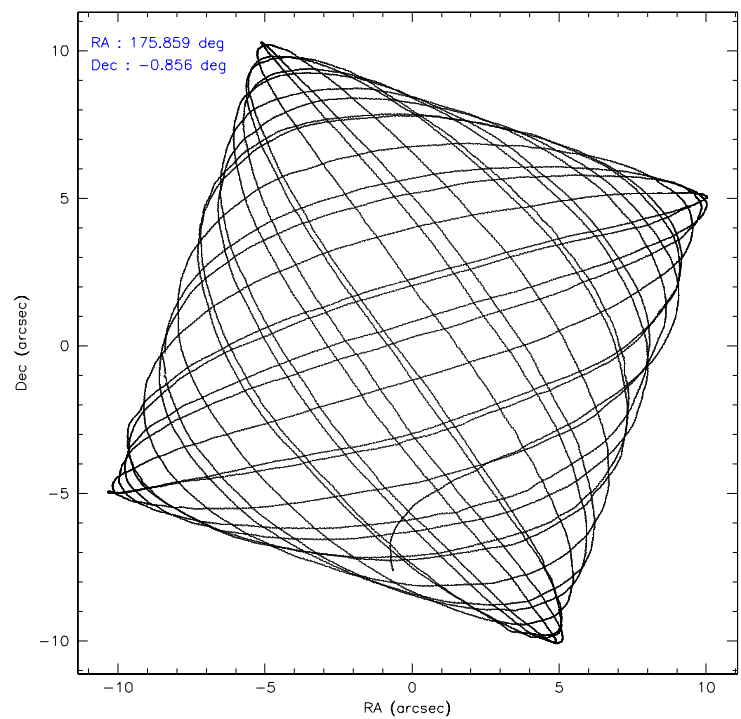
	ccd 7
level 1 events	204378
rejected events	109641
rejected %	53%

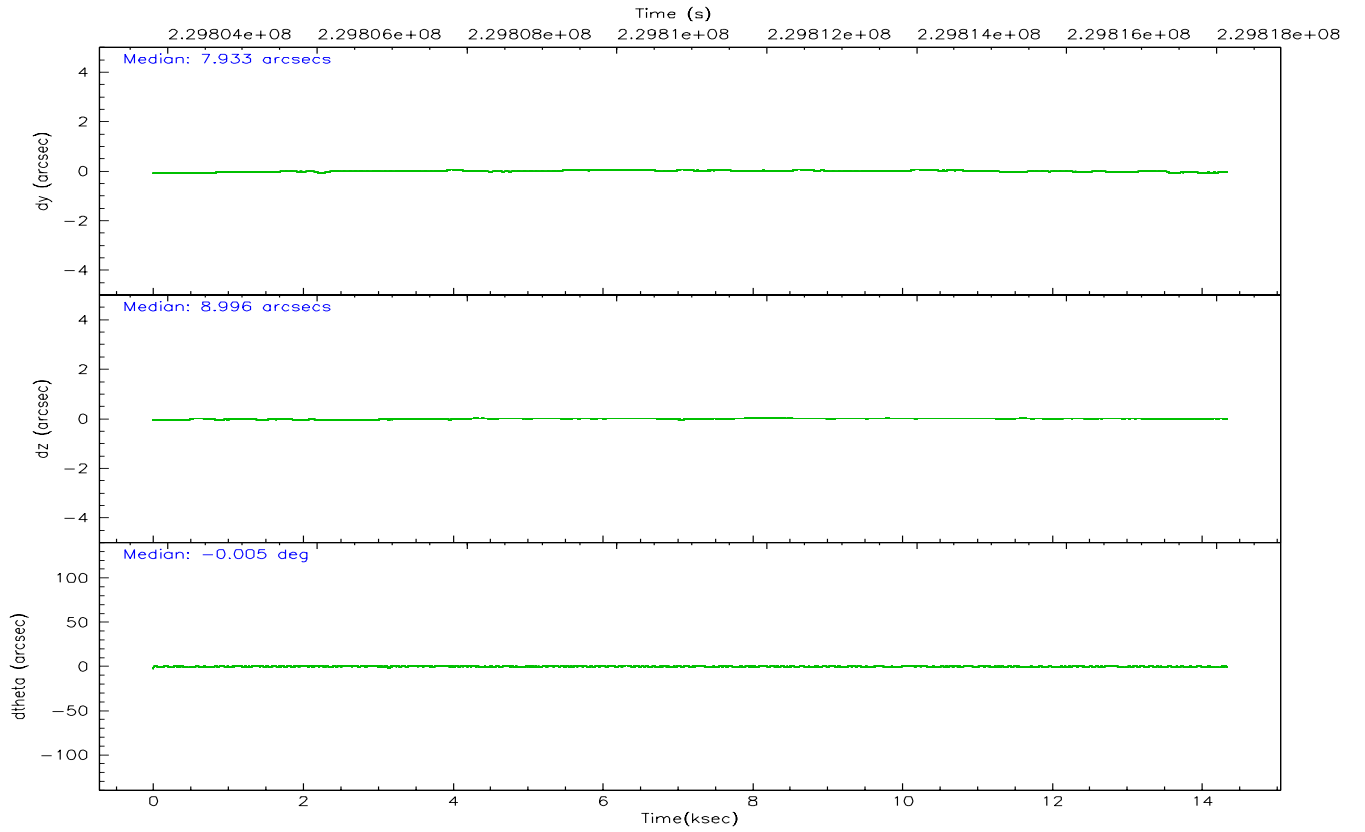
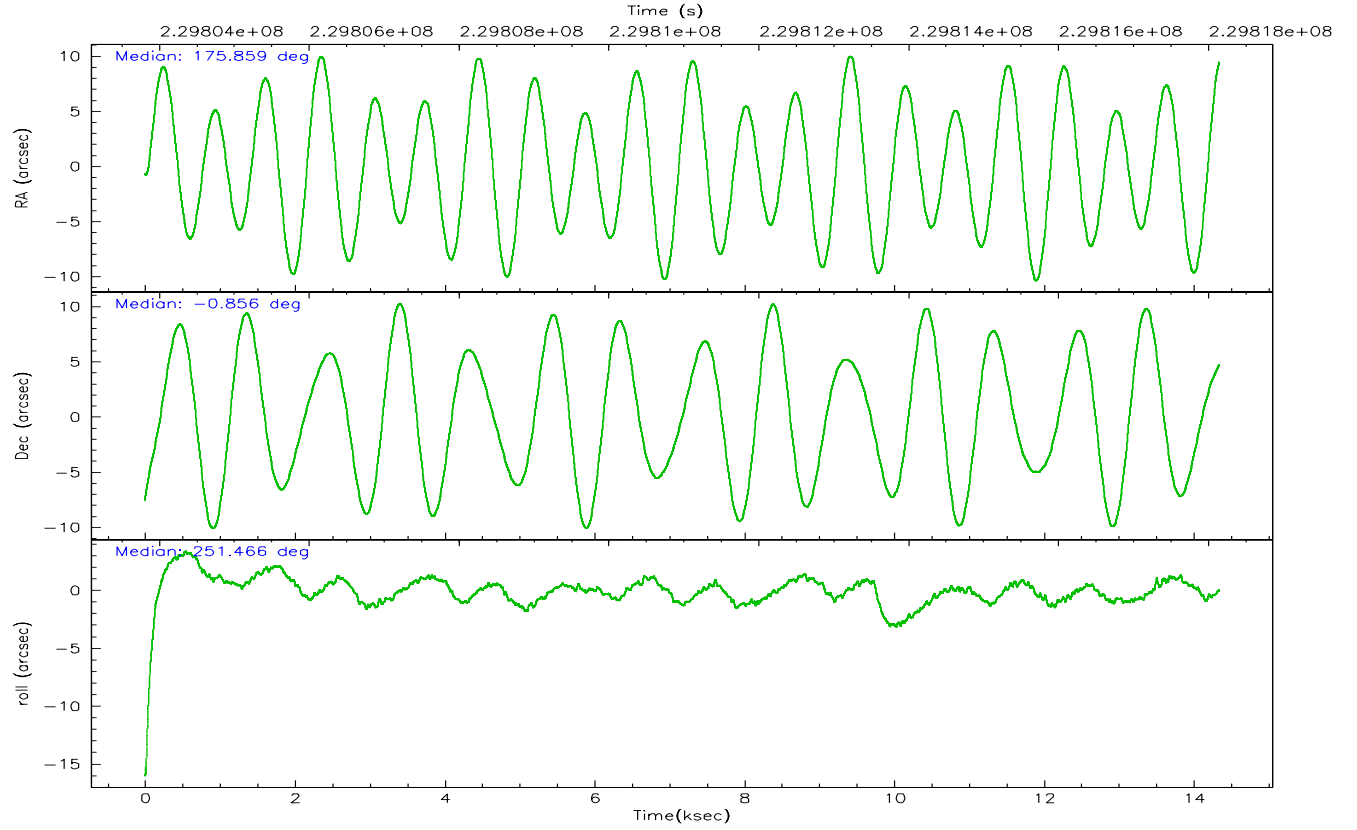
	ccd 7
grade 0 events	6861
	3%
grade 1 events	98
	0%
grade 2 events	23013
	11%
grade 3 events	4519
	2%
grade 4 events	4446
	2%
grade 5 events	10227
	5%
grade 6 events	60898
	29%
grade 7 events	94316
	46%

2.2 Compared Parameters

Parameter	Planned	Actual	Parameter	Planned	Actual
Instrument	ACIS	ACIS	Obspar format version number	6	6
Detector	ACIS-7	ACIS-7	Obspar file type	PREDICTED	ACTUAL
Grating	NONE	NONE	Obspar update status	NONE	UPDATED
Data mode	VFAINT	VFAINT	On-chip summing requested	N	N
Observation mode	POINTING	POINTING	Subarray requested	NONE	NONE
Pointing RA	175.853335	175.8591498484847	Alternating exposures requested	N	N
Pointing Dec	-0.829262	-0.8558638298325066	Primary exposure time	0.000000	3
Pointing Roll	251.313894	251.470597409606			
SIM focus pos (mm)	-0.684267	-0.6828225247311905			
SIM defocus (mm)	0	0.001444936568705701			
SIM translation stage pos (mm)	-190.132523	-190.1425803651734			
SIM translation stage offset (mm)	0	0.01005778216563158			
Observation start time	229803981.184000	229802609.42634			
Observation start date	2005-04-13T18:25:17	2005-04-13T18:03:29			
Observation end time	229818142.184000	229818366.75205			
Observation end date	2005-04-13T22:21:18	2005-04-13T22:26:06			
Read mode	TIMED	TIMED			

2.3 Aspect



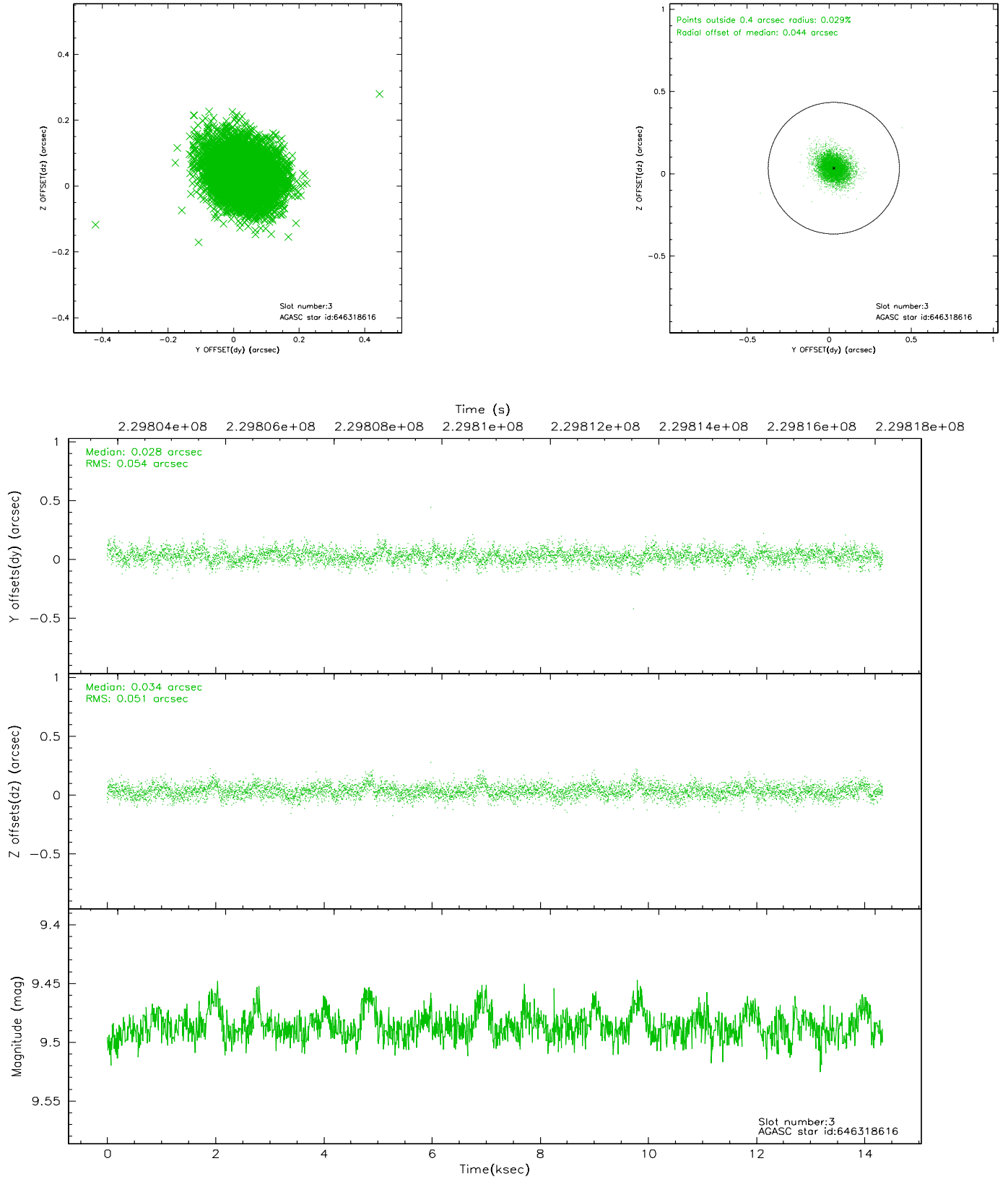


Slot Statistics

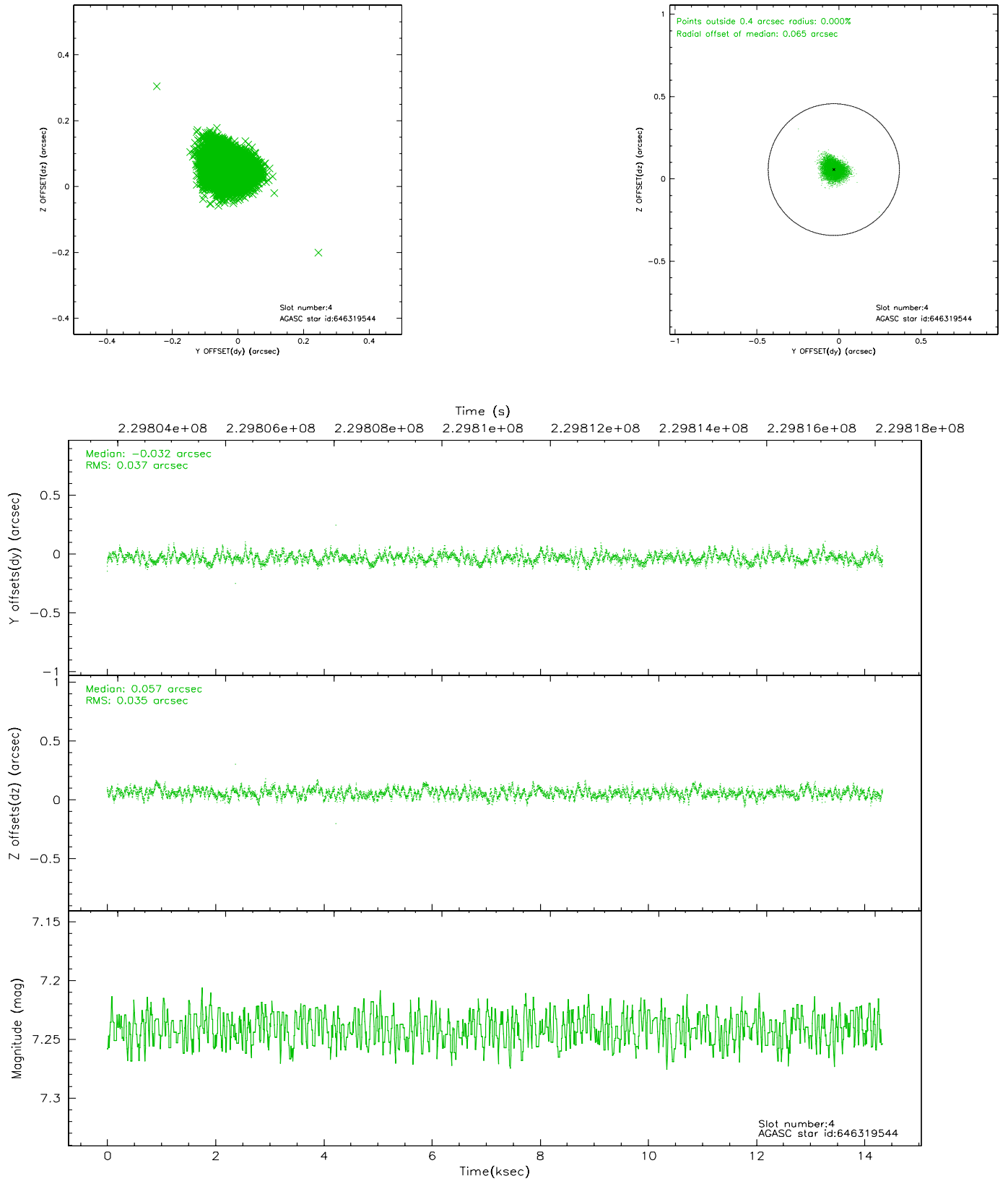
slot	status	id	mag	n_pts	med_dy	med_dz	dr1	dr2	ra	dec	mean_y	mean_z
0	FID	ACIS-S-2	7.10	3492	-0.034	-0.004	0.005	0.010	0.000000	0.000000	-760.72	-1730.17
1	FID	ACIS-S-4	7.21	3495	0.033	0.024	0.006	0.010	0.000000	0.000000	2152.46	178.03
2	FID	ACIS-S-6	7.35	3495	-0.026	-0.013	0.007	0.011	0.000000	0.000000	401.66	815.74
3	GUIDE	646318616	9.49	6990	0.028	0.034	0.077	0.130	176.109395	-0.378794	-1831.35	353.54
4	GUIDE	646319544	7.24	6993	-0.032	0.057	0.055	0.087	176.255766	-0.517844	-1525.76	1013.24
5	GUIDE	646321952	6.89	6994	-0.032	0.113	0.063	0.103	175.232908	-0.674327	187.53	-2293.87
6	GUIDE	646322304	9.52	6985	0.149	-0.290	0.094	0.158	175.858610	-0.945056	389.15	151.00
7	GUIDE	646323360	7.20	6929	-0.113	0.087	0.052	0.082	176.150253	-1.384836	1552.37	1653.35

2.4 Star Slots

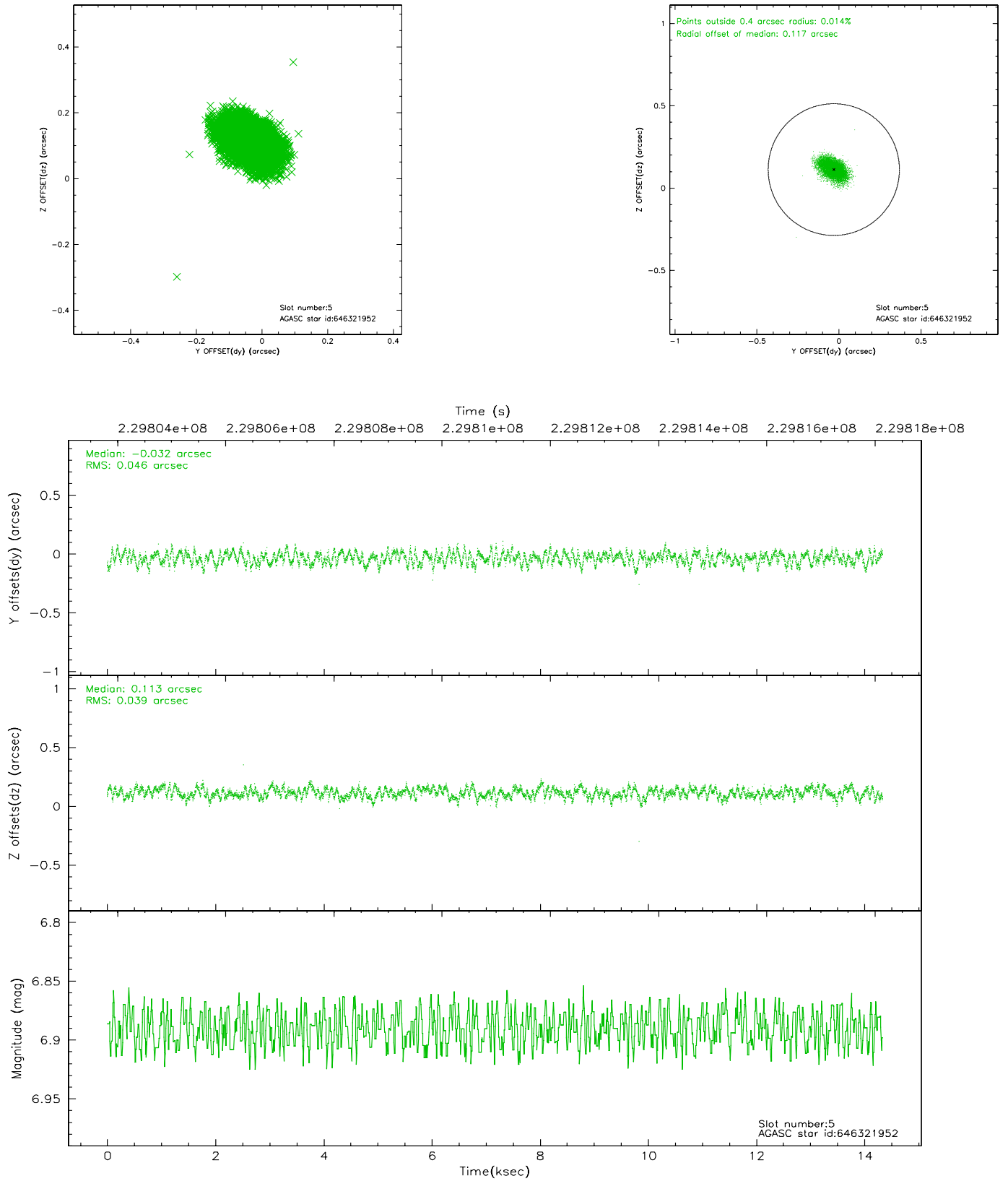
2.4.1 Slot 3



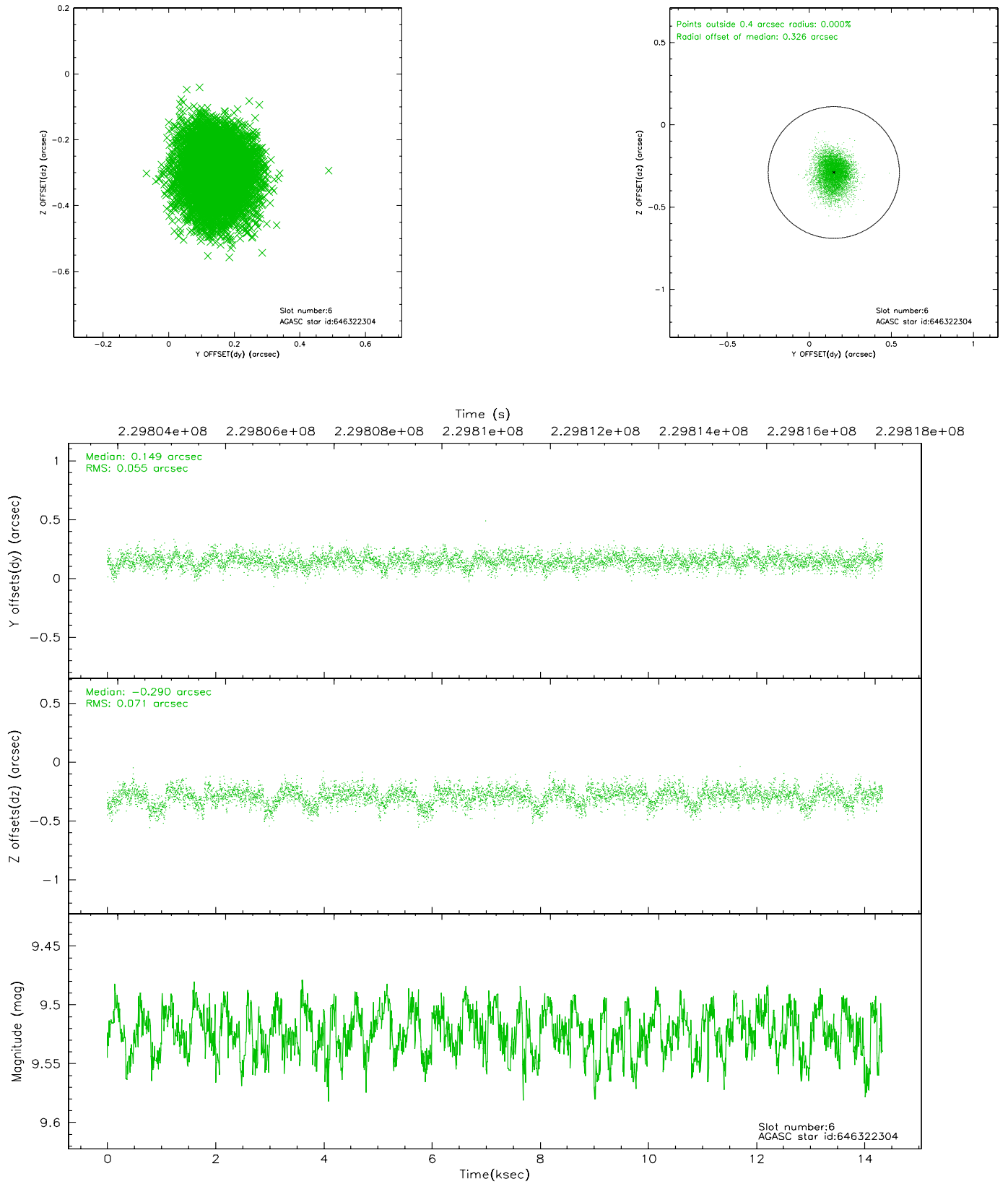
2.4.2 Slot 4



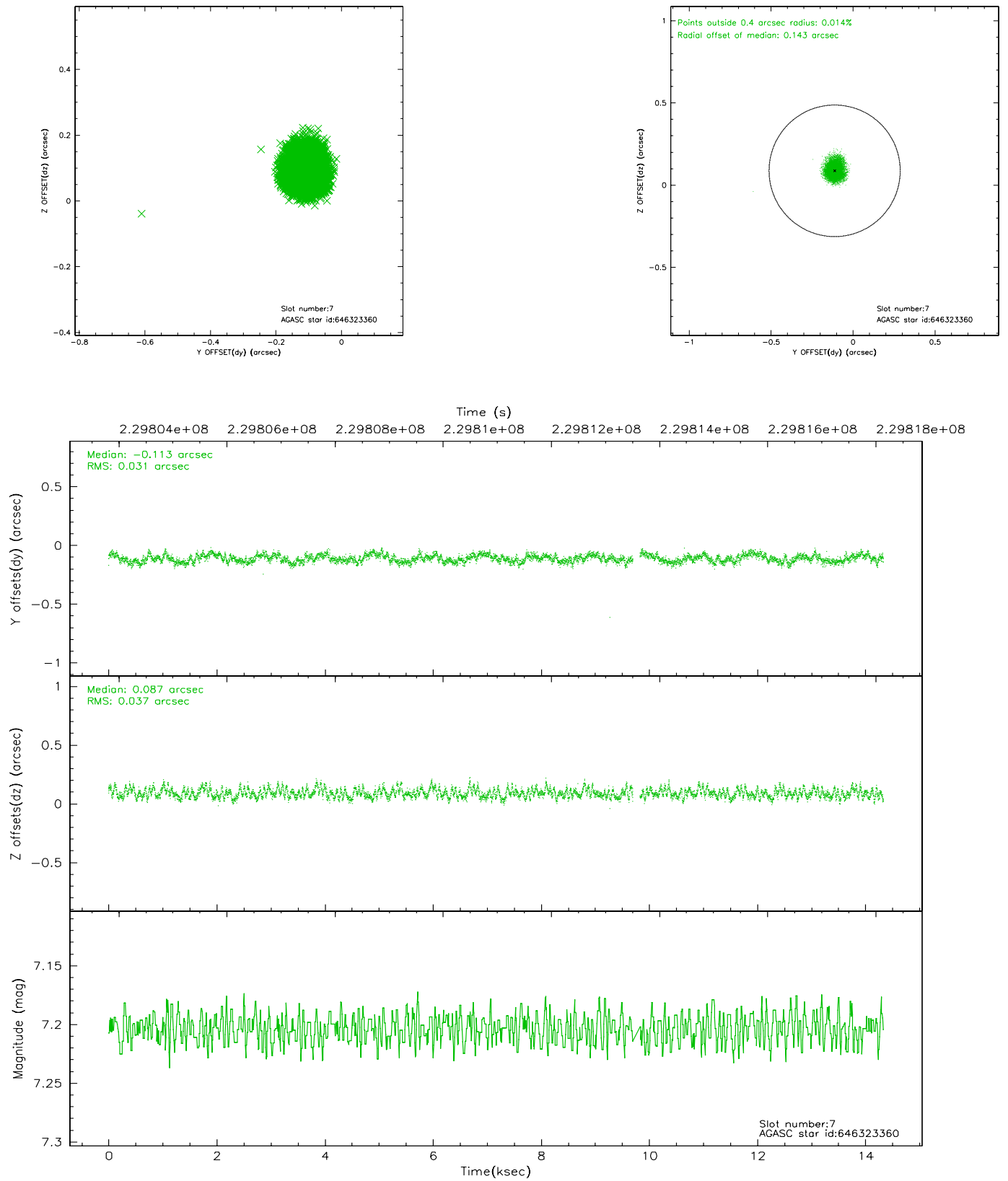
2.4.3 Slot 5



2.4.4 Slot 6

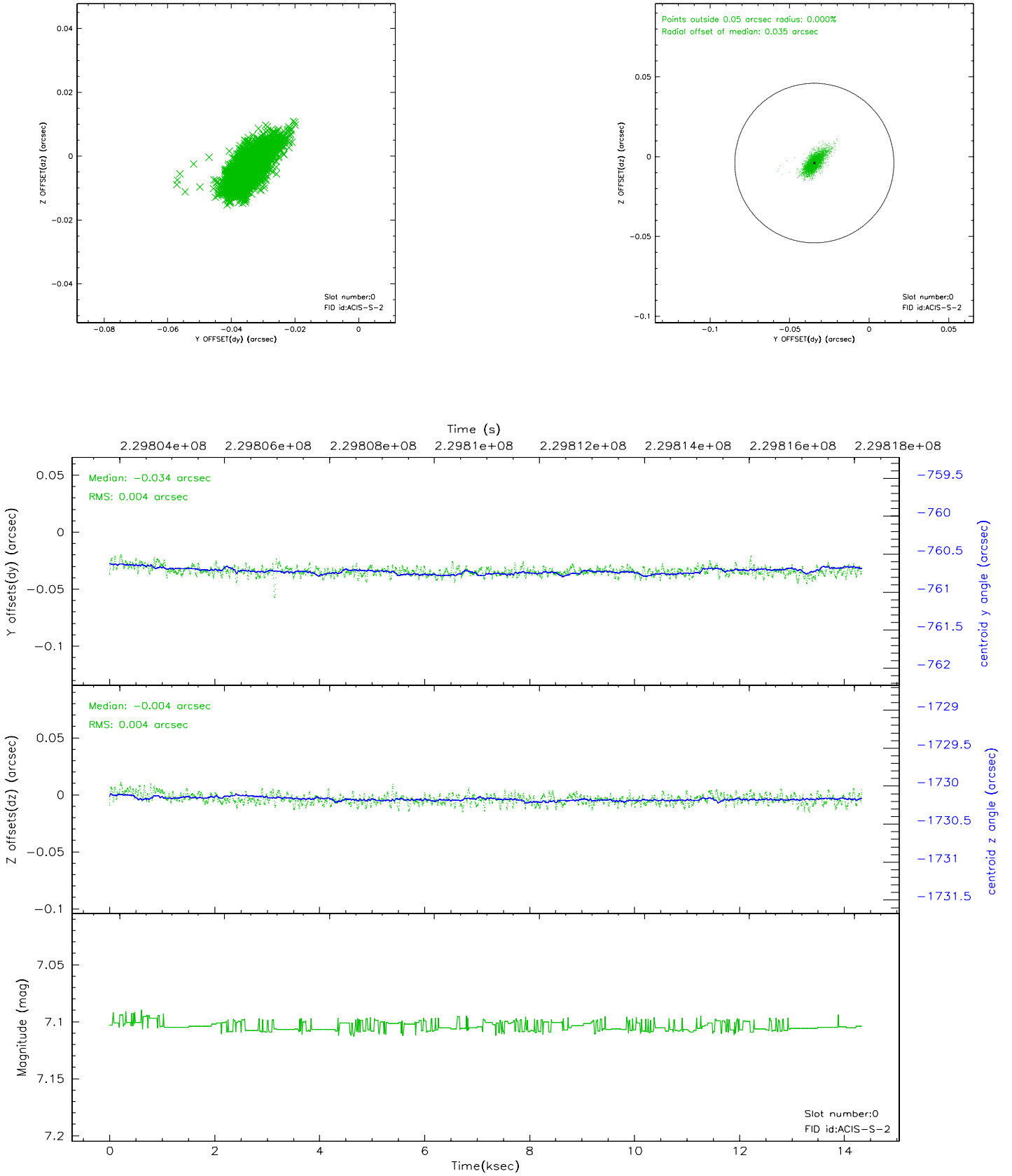


2.4.5 Slot 7

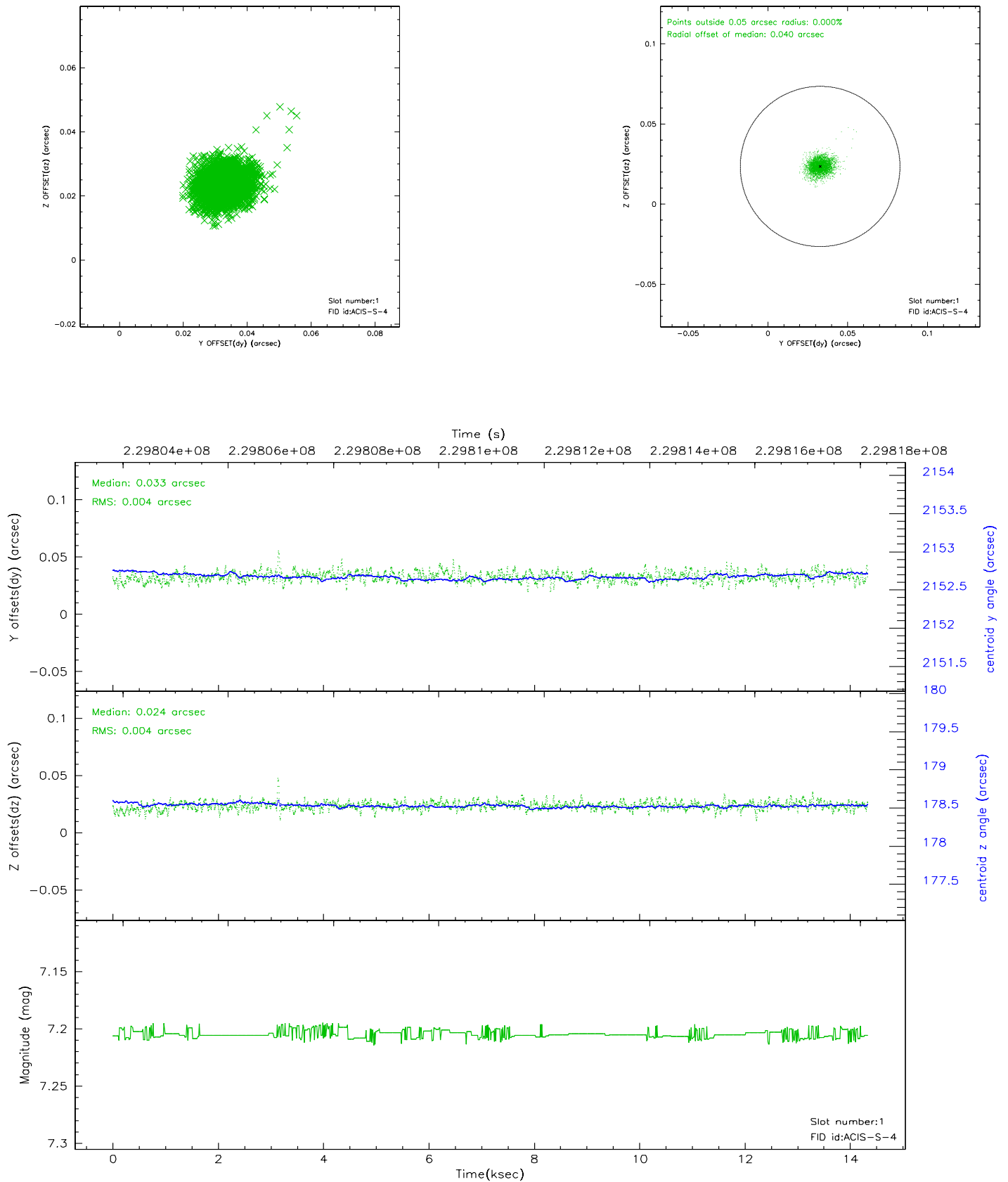


2.5 FID Slots

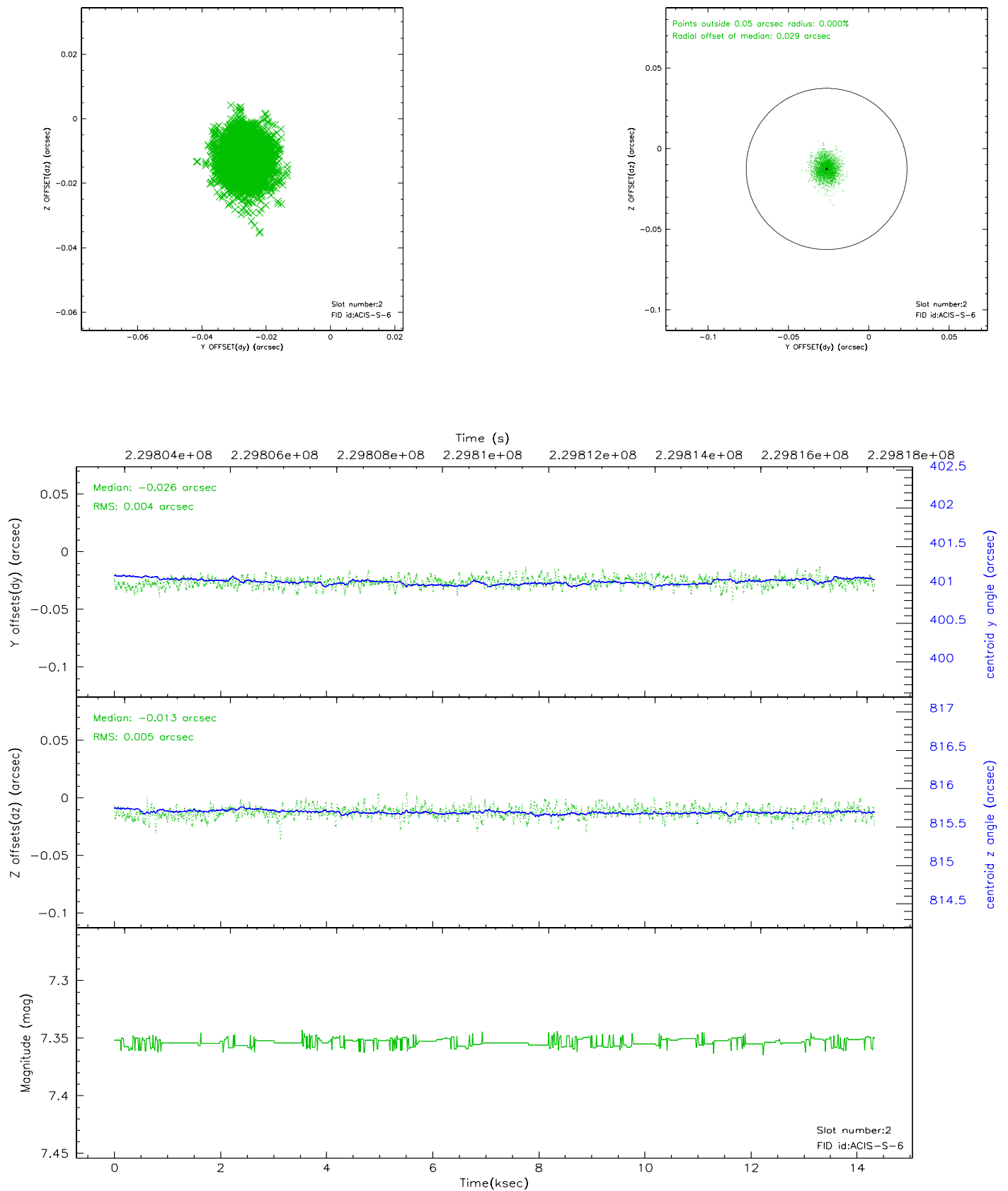
2.5.1 Slot 0



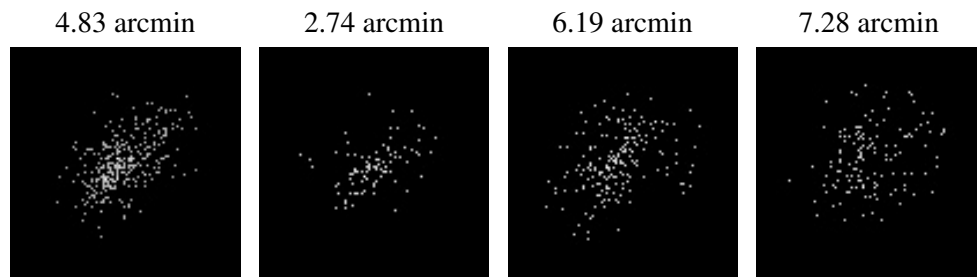
2.5.2 Slot 1



2.5.3 Slot 2



3 Point Sources



A Summary

A.1 Status

V&V Scientist	Beth Sundheim
V&V Date (YYYY-MM-DD)	2006.03.01
V&V Edition	1
V&V Disposition and Status	OK
V&V Charge Time	14.33095

A.2 Comments