

V&V Reference Report

L2 ASCDS Version : 7.6.7.2

Observation 4703 - L2 Version 001
Chandra X-Ray Center

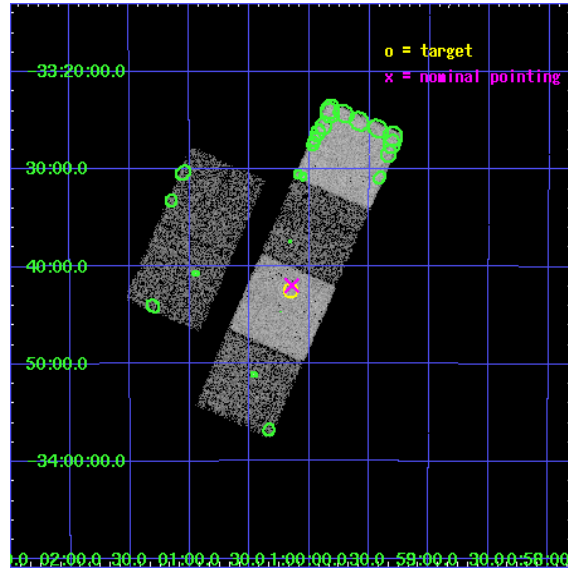
L2 Processing Date : May 23 2006

Contents

1	Front	2
2	OBI	3
2.1	OBI	3
2.1.1	Images	3
2.1.2	Bias	3
2.1.3	Parameters	4
2.1.4	Events	4
2.2	Compared Parameters	5
2.3	Aspect	6
2.4	Star Slots	9
2.4.1	Slot 3	9
2.4.2	Slot 4	10
2.4.3	Slot 5	11
2.4.4	Slot 6	12
2.4.5	Slot 7	13
2.5	FID Slots	14
2.5.1	Slot 0	14
2.5.2	Slot 1	15
2.5.3	Slot 2	16
3	Point Sources	17
A	Summary	18
A.1	Status	18
A.2	Comments	18

1 Front

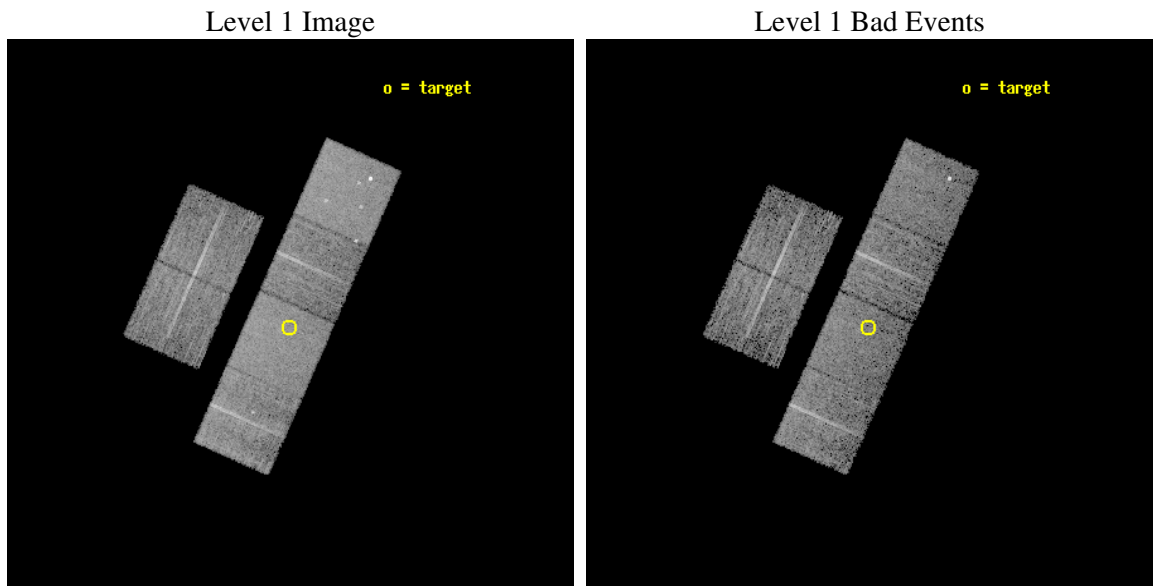
seq_num	600358
obs_id	4703
title	Using the Sculptor Dwarf Spheroidal Galaxy to Constrain X-ray Binary Production in Population II
observer	Dr. Thomas Maccarone
object	SCULPTOR DWARF SPHEROIDAL
dtcycle	0
cycle	P
ra_targ	15.039167
dec_targ	-33.708889
ra_nom	15.036429239048
dec_nom	-33.699531386251
roll_nom	113.8994356079
revision	2
ontime	5955.1999778152
livetime	5879.7916499051
ontime2	5955.1999778152
ontime3	5955.1999778152
ontime5	5955.1999778152
ontime6	5955.1999778152
ontime7	5955.1999778152
ontime8	5955.1999778152
l2events	67844



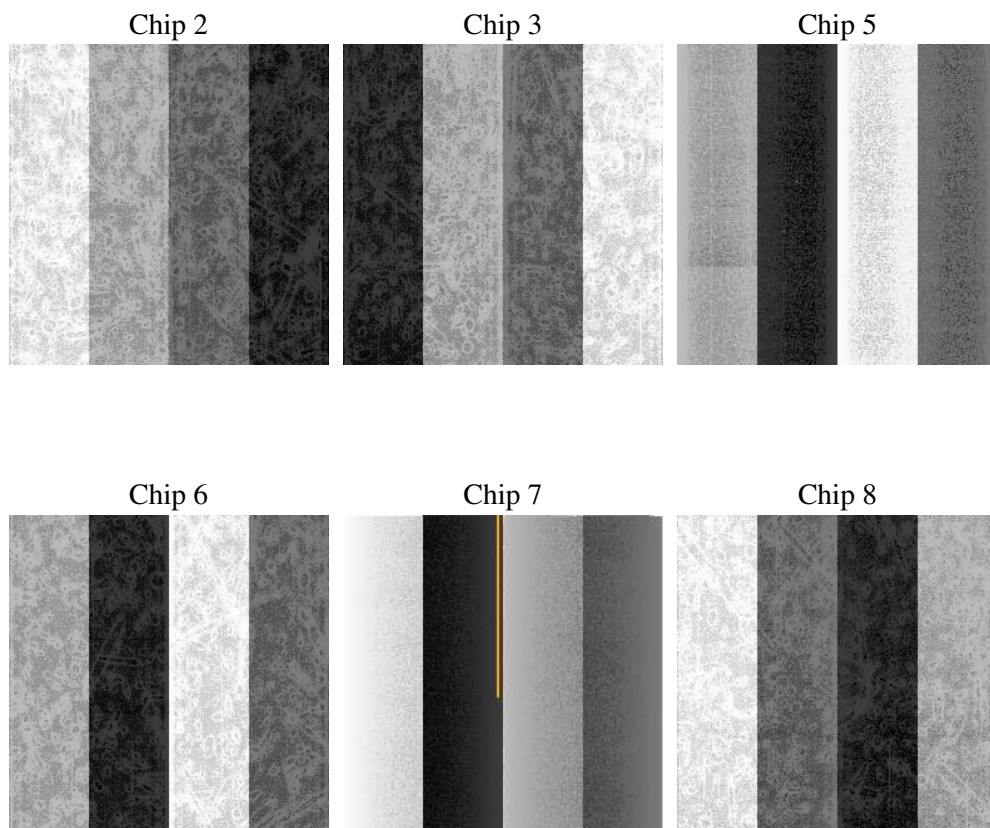
2 OBI

2.1 OBI

2.1.1 Images



2.1.2 Bias



2.1.3 Parameters

obi_num	0
ascdsver	7.6.7.2
caldsver	3.2.2
date	2006-05-23T20:48:57
revision	2

sched_exp_time	6000.000000
ontime	5960.2084442377
ontime2	5960.2084243298
ontime3	5960.2084243298
ontime5	5960.2084243298
ontime6	5960.2084243298
ontime7	5960.2084442377
ontime8	5960.2084243298
l1events	315436

2.1.4 Events

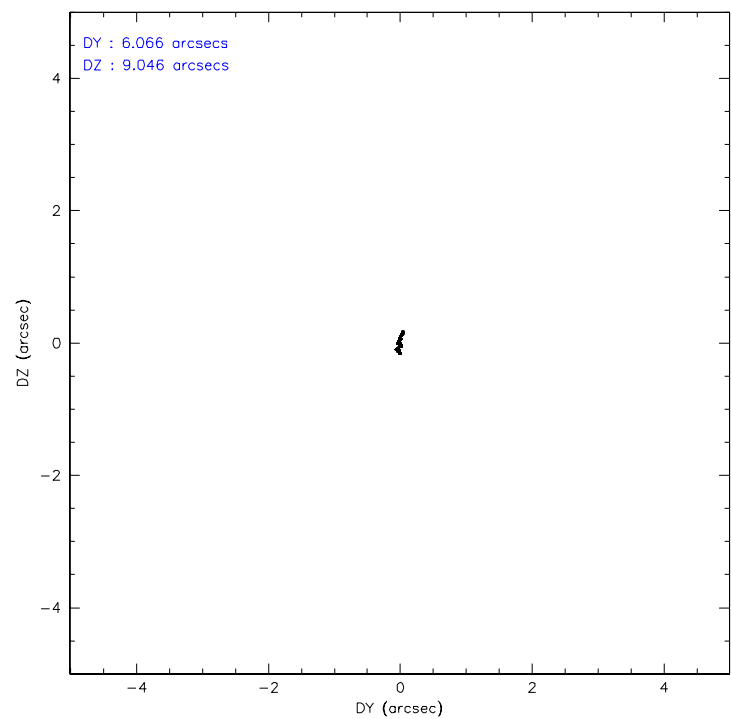
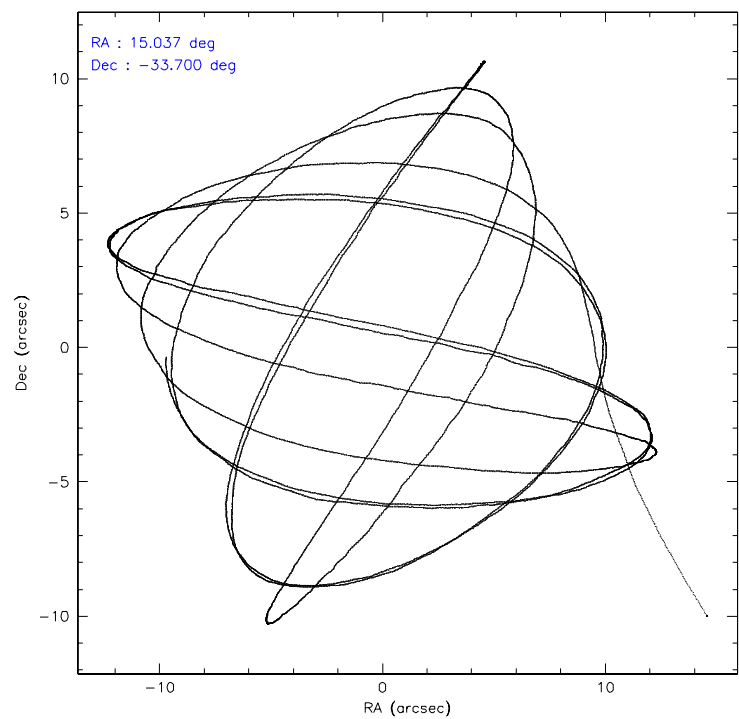
	ccd 2	ccd 3	ccd 5	ccd 6	ccd 7	ccd 8
level 1 events	44116	43287	67048	44951	59817	56217
rejected events	38888	38340	37740	39697	37349	43632
rejected %	88%	88%	56%	88%	62%	77%

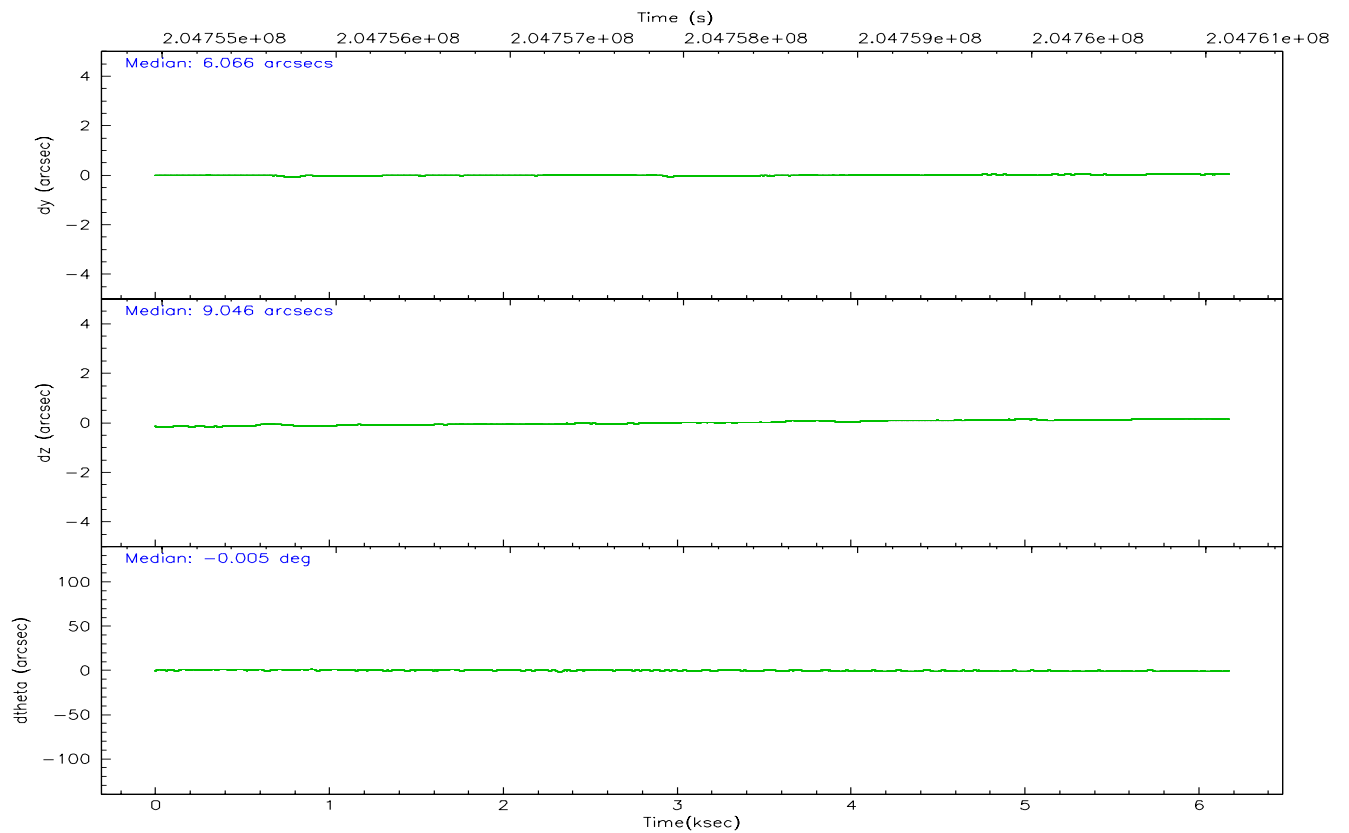
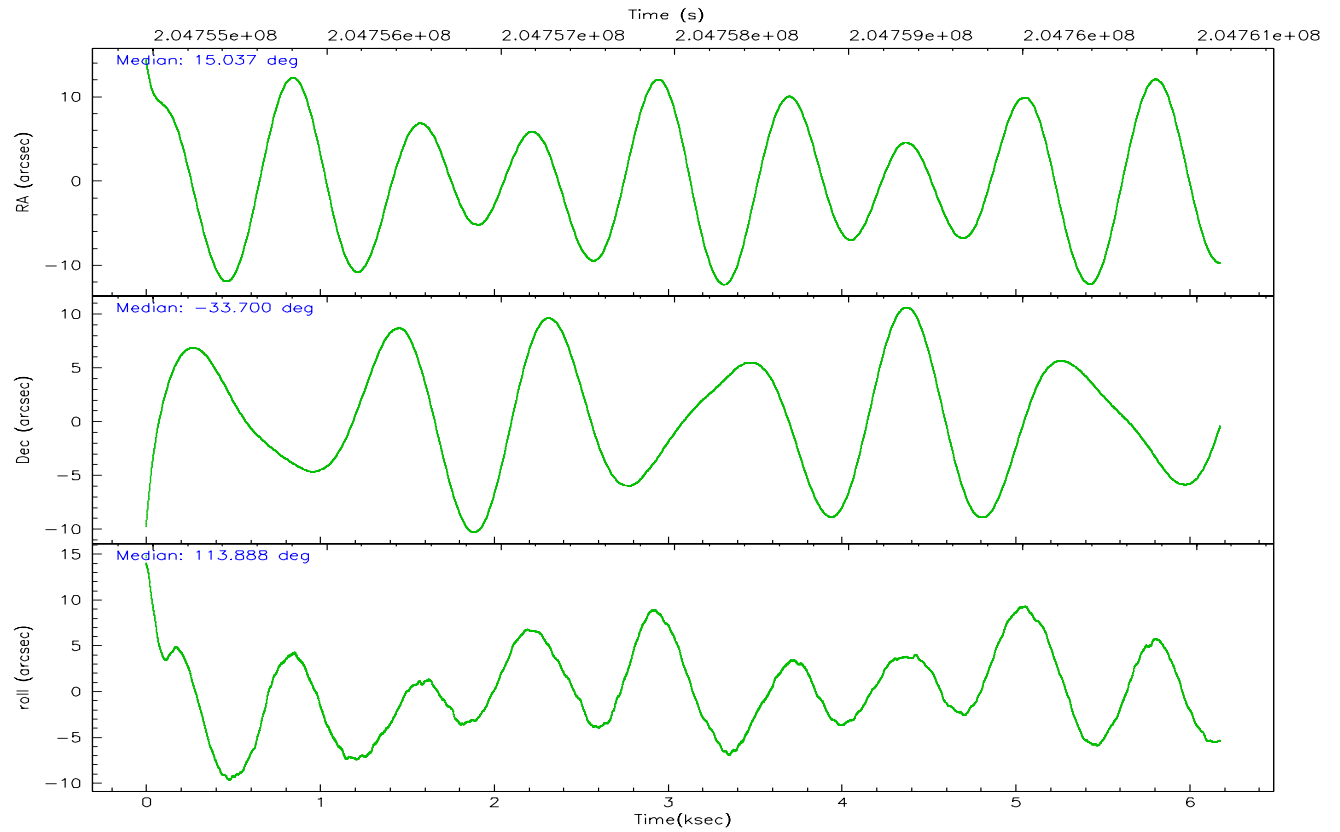
	ccd 2	ccd 3	ccd 5	ccd 6	ccd 7	ccd 8
grade 0 events	2290	2235	2814	2038	1250	4126
	5%	5%	4%	4%	2%	7%
grade 1 events	28	23	868	25	40	44
	0%	0%	1%	0%	0%	0%
grade 2 events	1071	929	8442	1125	5676	2647
	2%	2%	12%	2%	9%	4%
grade 3 events	496	492	622	470	1112	1311
	1%	1%	0%	1%	1%	2%
grade 4 events	523	483	735	522	1080	1272
	1%	1%	1%	1%	1%	2%
grade 5 events	1714	1918	3092	2061	3868	2653
	3%	4%	4%	4%	6%	4%
grade 6 events	851	810	16711	1103	13380	3237
	1%	1%	24%	2%	22%	5%
grade 7 events	37143	36397	33764	37607	33411	40927
	84%	84%	50%	83%	55%	72%

2.2 Compared Parameters

Parameter	Planned	Actual	Parameter	Planned	Actual
Instrument	ACIS	ACIS	Obspar format version number	6	6
Detector	ACIS-235678	ACIS-235678	Obspar file type	PREDICTED	ACTUAL
Grating	NONE	NONE	Obspar update status	NONE	UPDATED
Data mode	VFAINT	VFAINT	On-chip summing requested	N	N
Observation mode	POINTING	POINTING	Subarray requested	NONE	NONE
Pointing RA	15.063102	15.03642923904763	Alternating exposures requested	N	N
Pointing Dec	-33.715236	-33.69953138625138	Primary exposure time	0.000000	3.2
Pointing Roll	113.757600	113.8994356079048			
SIM focus pos (mm)	-0.684267	-0.6828225247311905			
SIM defocus (mm)	0	0.001444936568705701			
SIM translation stage pos (mm)	-190.132523	-190.1400660498719			
SIM translation stage offset (mm)	0	0.00754346686406393			
Observation start time	204755133.184000	204754162.08934			
Observation start date	2004-06-27T20:24:29	2004-06-27T20:09:22			
Observation end time	204761133.184000	204761712.75218			
Observation end date	2004-06-27T22:04:29	2004-06-27T22:15:12			
Read mode	TIMED	TIMED			

2.3 Aspect



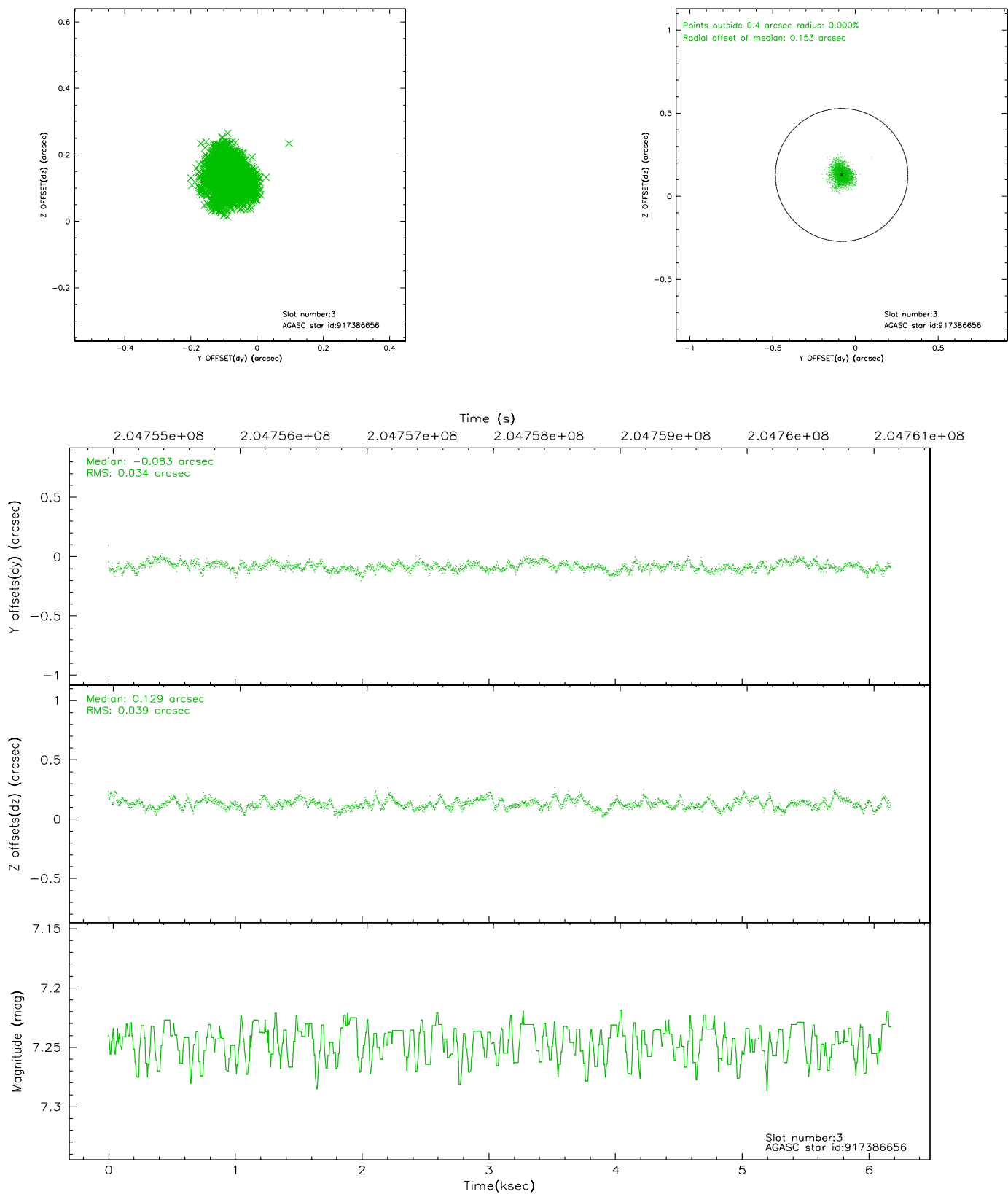


Slot Statistics

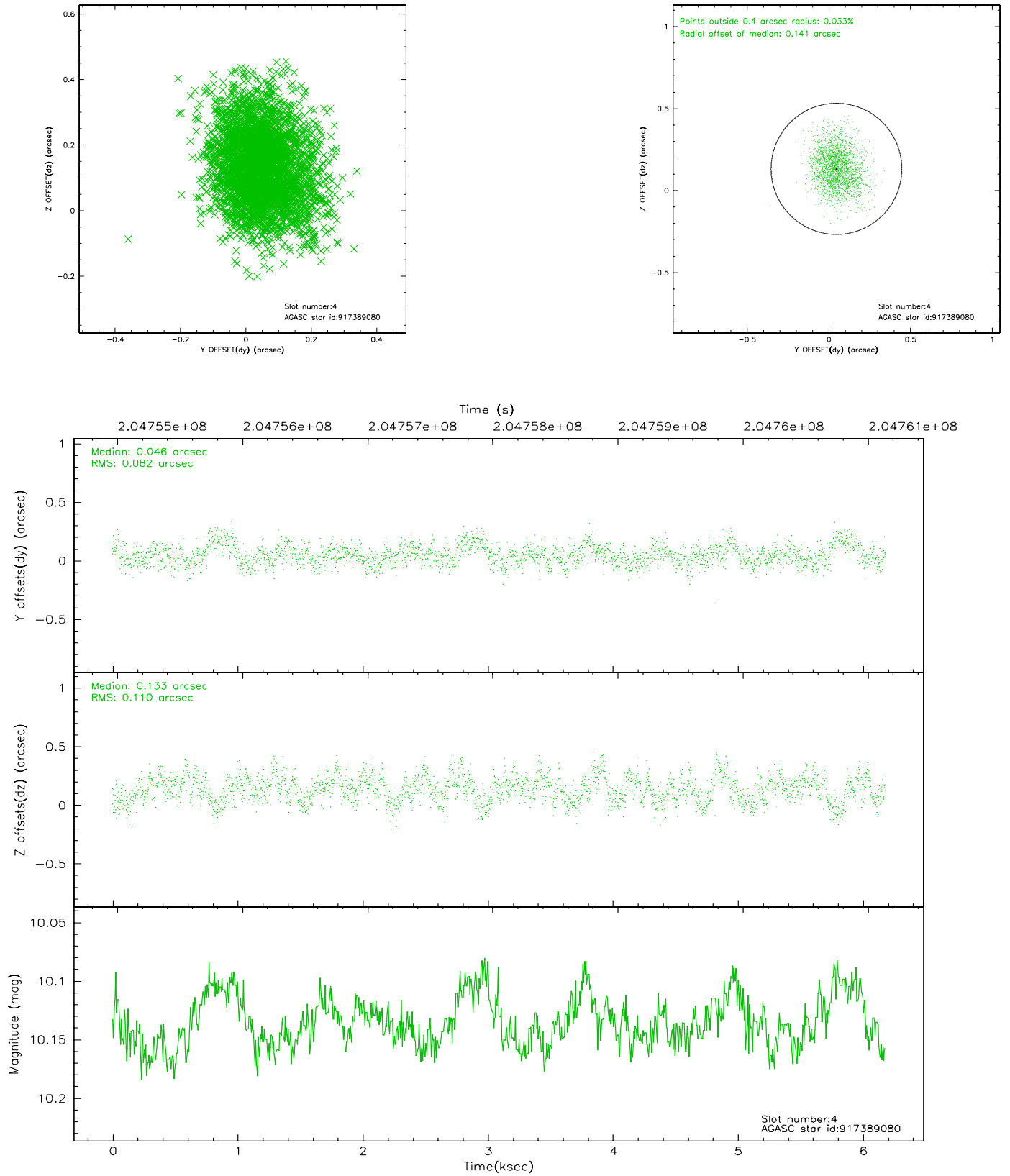
slot	status	id	mag	n_pts	med_dy	med_dz	dr1	dr2	ra	dec	mean_y	mean_z
0	FID	ACIS-S-1	7.19	1507	-0.002	0.013	0.008	0.013	0.000000	0.000000	937.22	-1725.90
1	FID	ACIS-S-4	7.21	1507	0.031	-0.004	0.006	0.011	0.000000	0.000000	2155.21	177.24
2	FID	ACIS-S-5	7.23	1508	-0.056	0.004	0.006	0.010	0.000000	0.000000	-1810.46	171.96
3	GUIDE	917386656	7.24	3015	-0.083	0.129	0.056	0.089	15.342124	-33.359890	832.33	-1282.38
4	GUIDE	917389080	10.14	3011	0.046	0.133	0.147	0.240	15.722484	-33.662555	-627.16	-1882.40
5	GUIDE	917389288	9.57	3010	-0.121	0.251	0.113	0.180	15.394706	-33.185862	1340.55	-1681.41
6	GUIDE	917651048	9.67	3014	0.129	-0.176	0.120	0.198	14.655628	-34.424089	-1849.94	2135.68
7	GUIDE	917650528	8.72	3014	0.019	-0.340	0.094	0.157	14.274554	-33.869842	431.14	2385.80

2.4 Star Slots

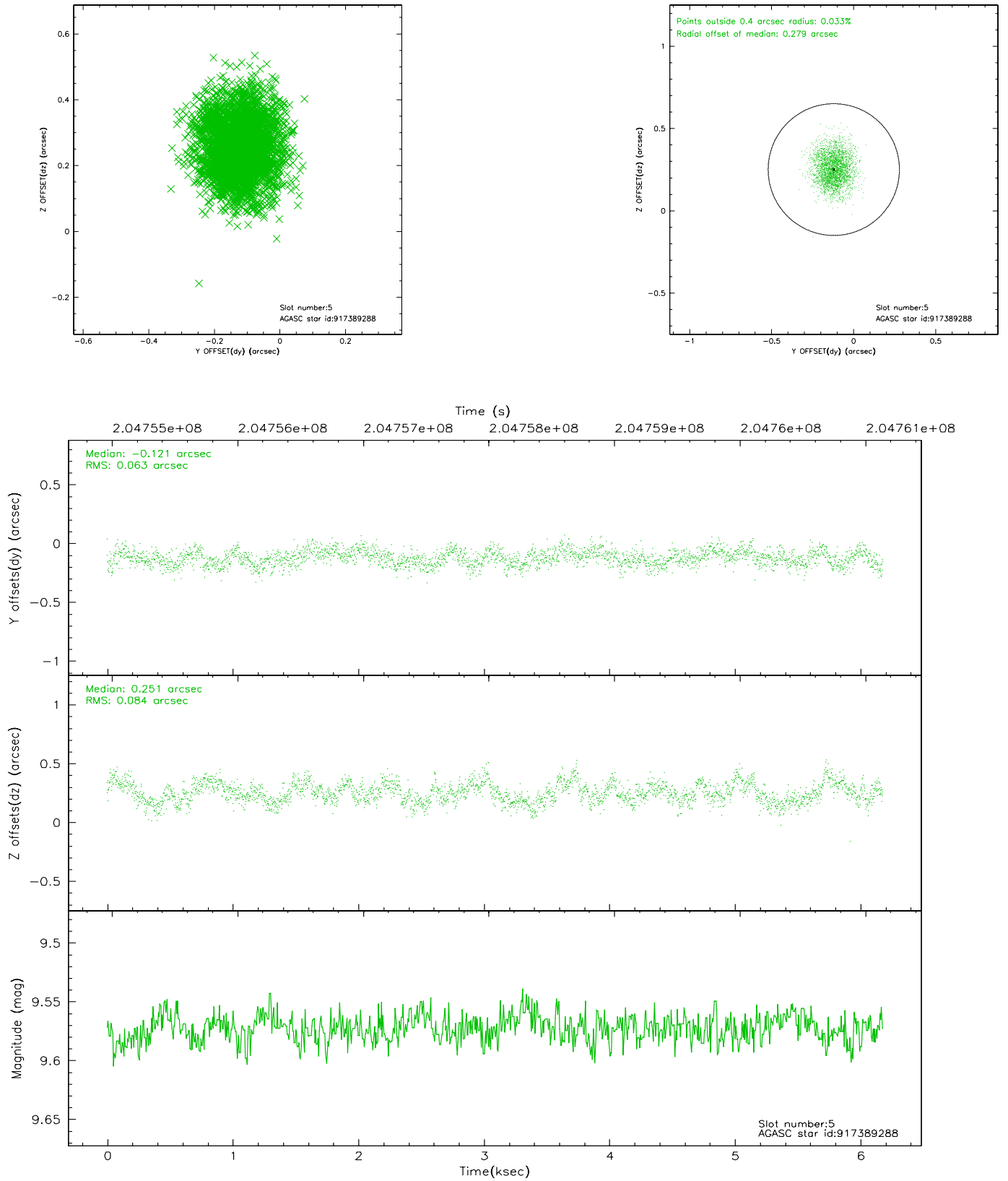
2.4.1 Slot 3



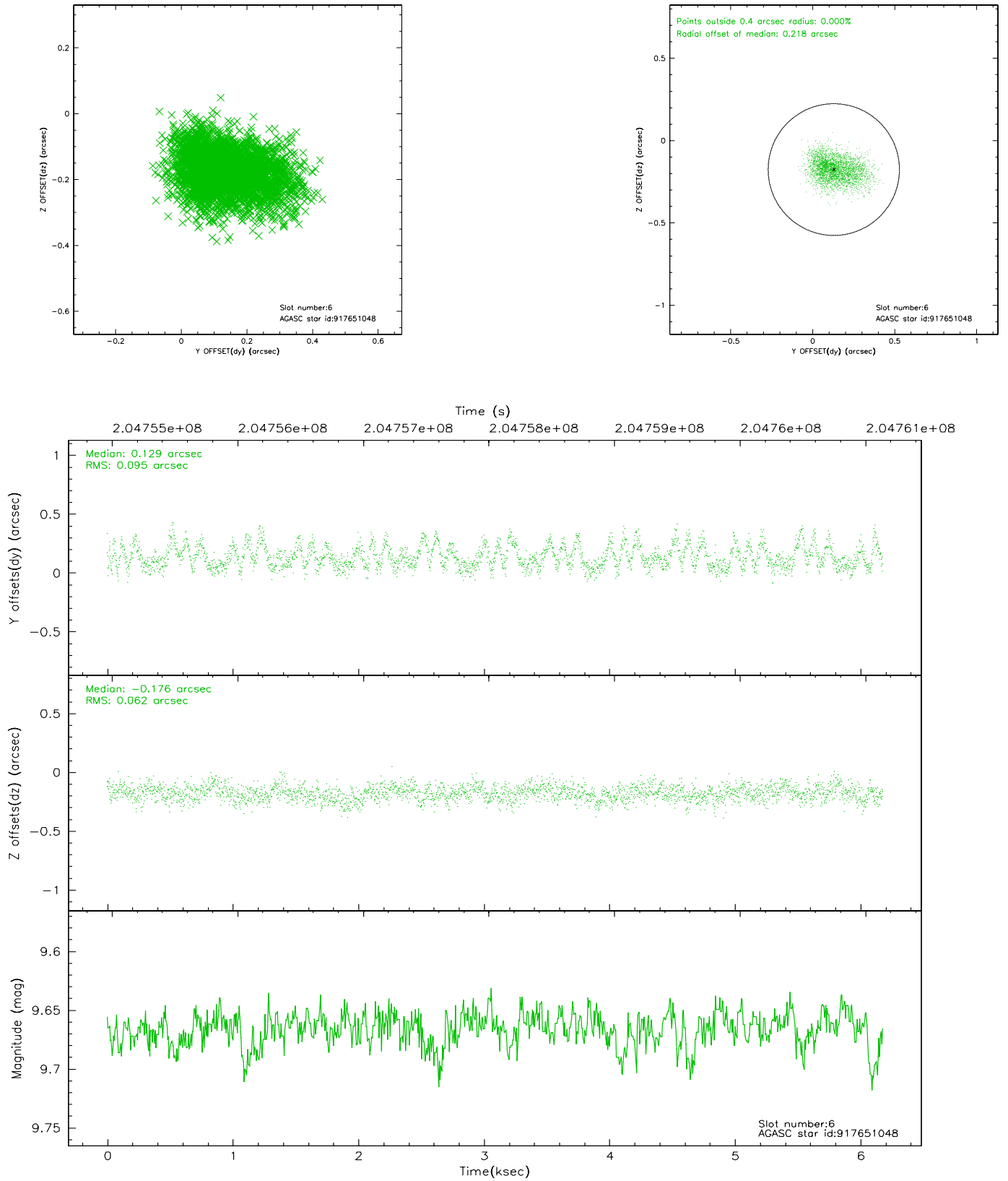
2.4.2 Slot 4



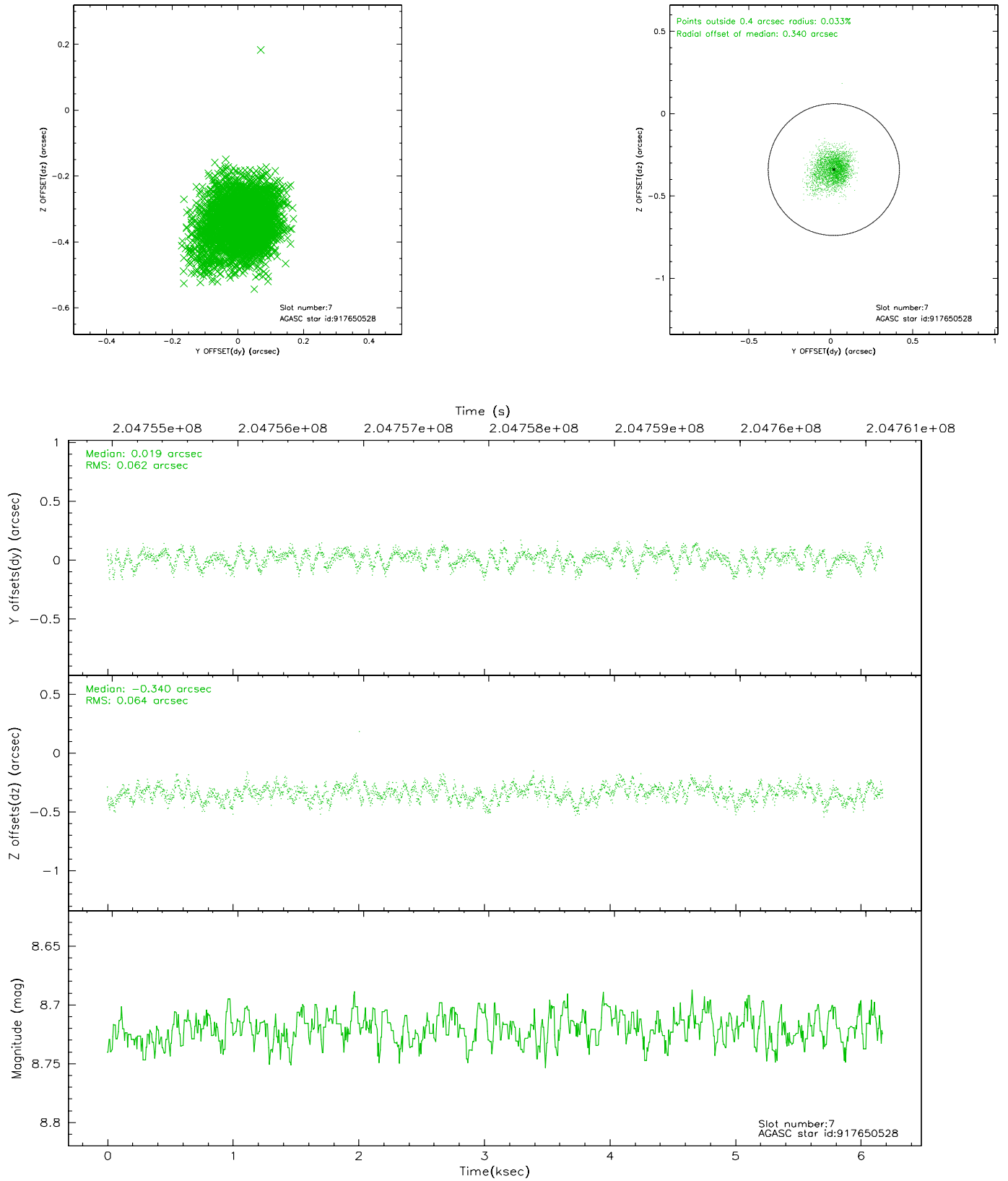
2.4.3 Slot 5



2.4.4 Slot 6

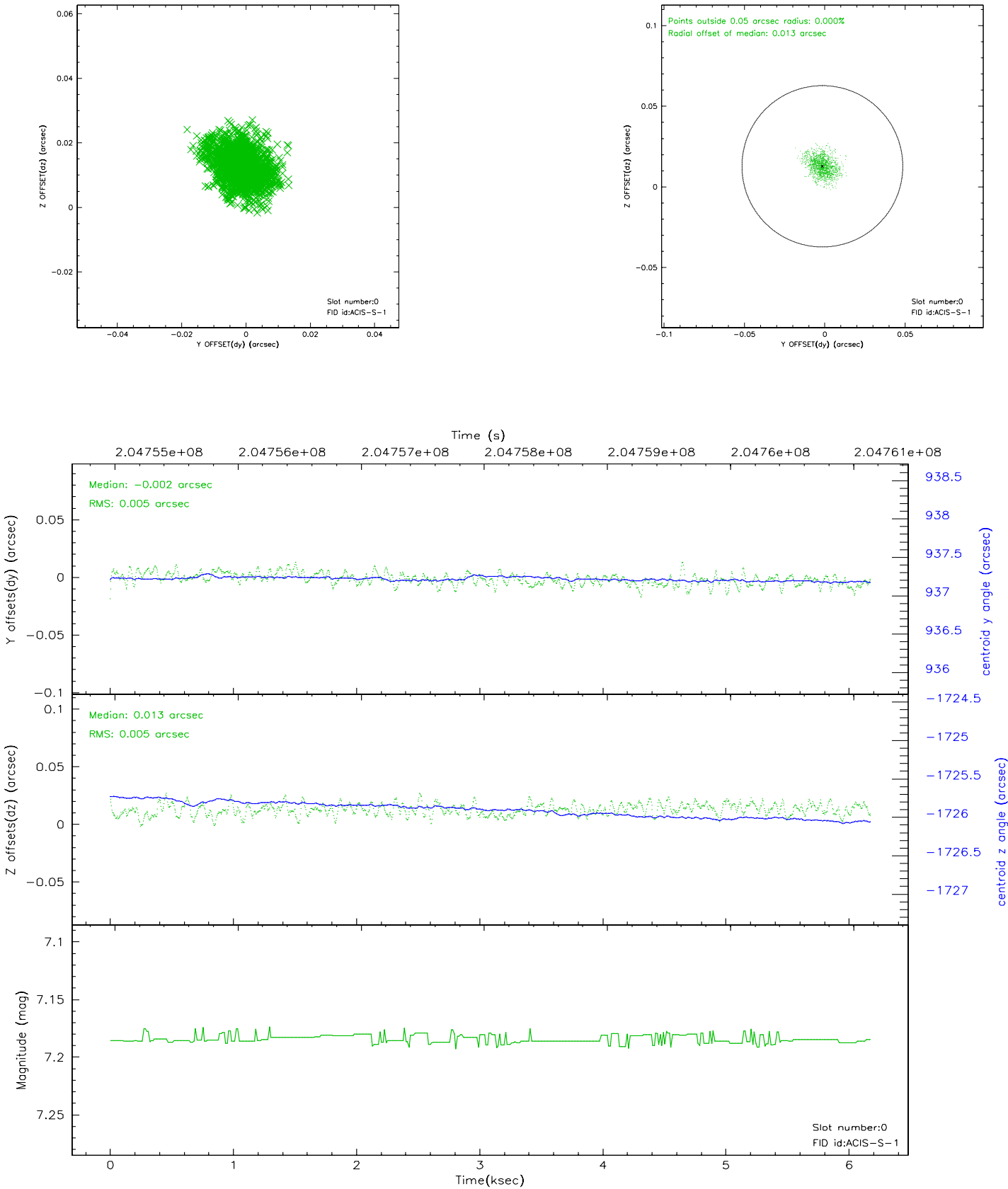


2.4.5 Slot 7

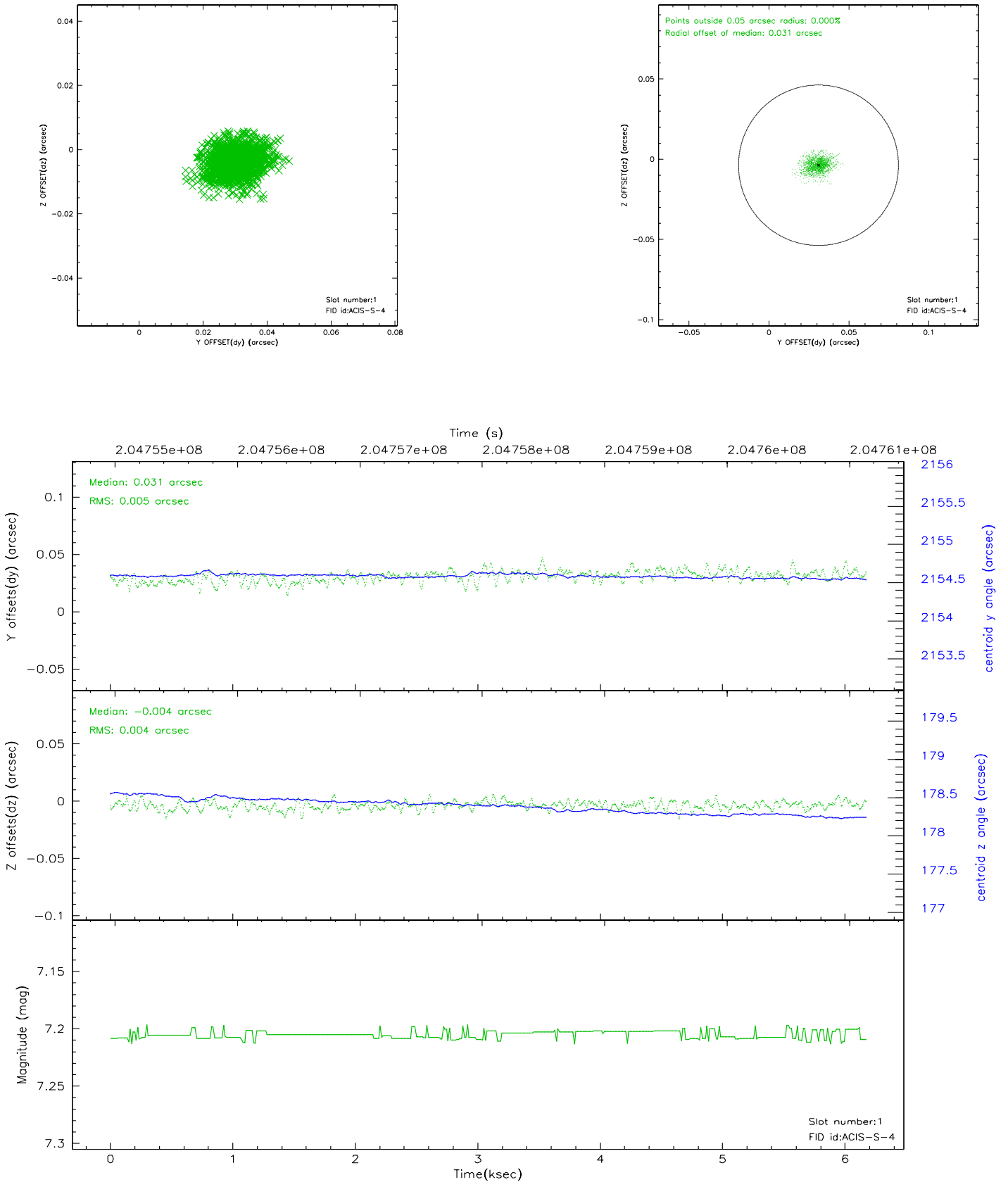


2.5 FID Slots

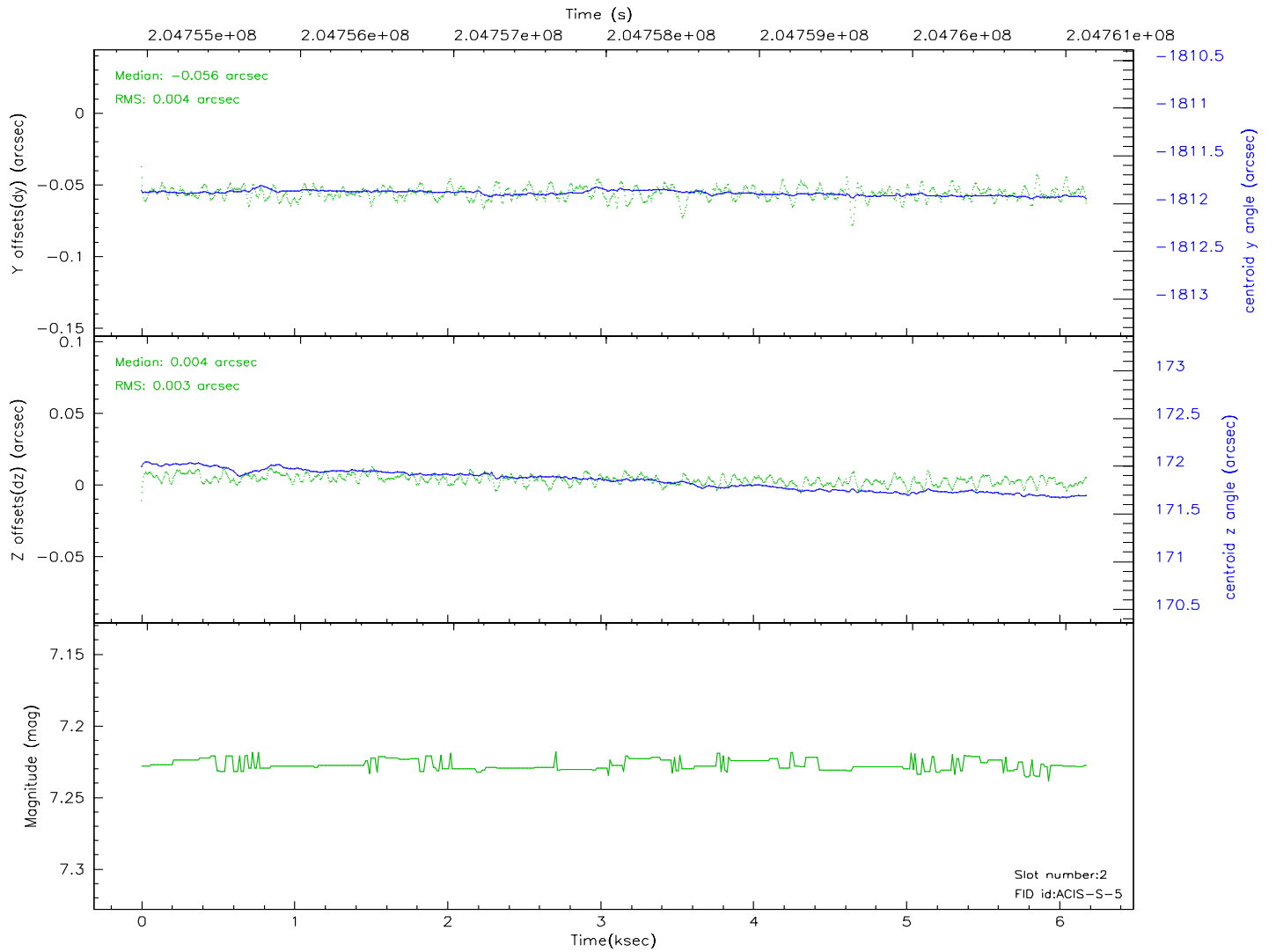
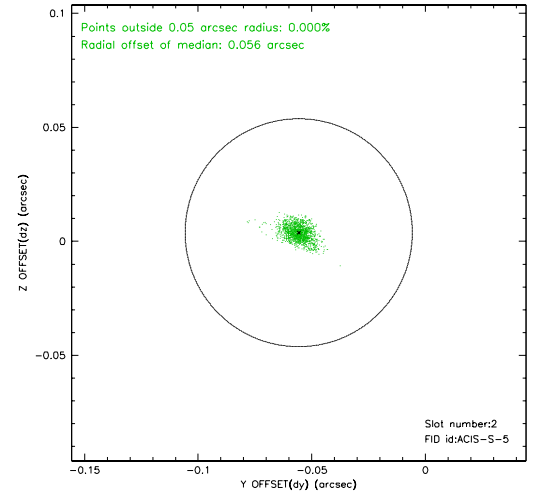
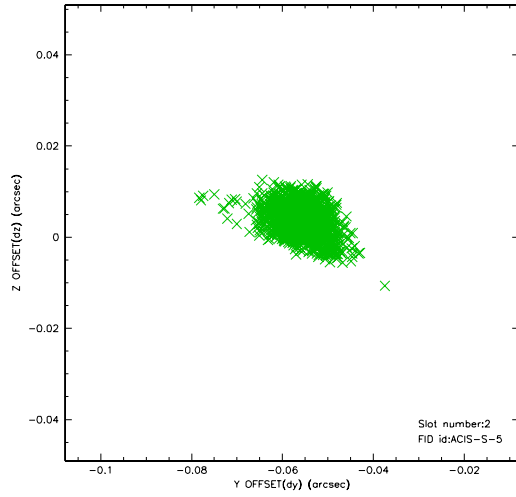
2.5.1 Slot 0



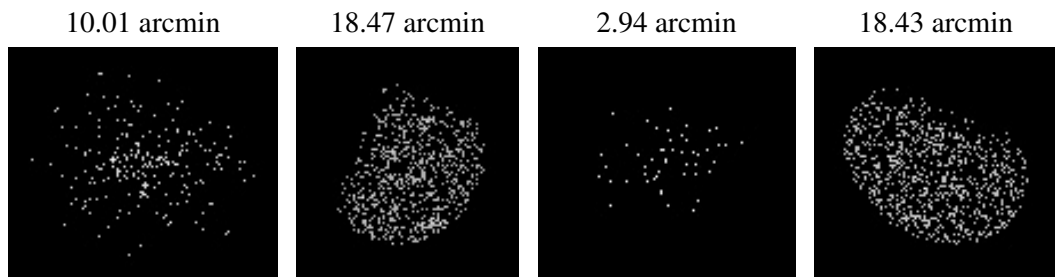
2.5.2 Slot 1



2.5.3 Slot 2



3 Point Sources



A Summary

A.1 Status

V&V Scientist	Jen Lauer
V&V Date (YYYY-MM-DD)	2006.05.24
V&V Edition	1
V&V Disposition and Status	OK
V&V Charge Time	5.955

A.2 Comments