

V&V Reference Report

L2 ASCDS Version : 7.6.7.2

Observation 4553 - L2 Version 001
Chandra X-Ray Center

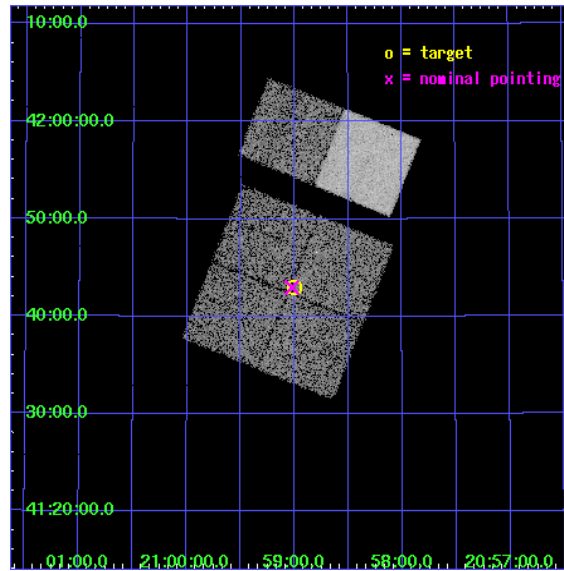
L2 Processing Date : Jun 2 2006

Contents

1	Front	2
2	OBI	3
2.1	OBI	3
2.1.1	Images	3
2.1.2	Bias	3
2.1.3	Parameters	4
2.1.4	Events	4
2.2	Compared Parameters	5
2.3	Aspect	6
2.4	Star Slots	9
2.4.1	Slot 3	9
2.4.2	Slot 4	10
2.4.3	Slot 5	11
2.4.4	Slot 6	12
2.4.5	Slot 7	13
2.5	FID Slots	14
2.5.1	Slot 0	14
2.5.2	Slot 1	15
2.5.3	Slot 2	16
3	Gratings	17
3.1	HEG Arm	17
3.2	MEG Arm	19
A	Summary	21
A.1	Status	21
A.2	Comments	21

1 Front

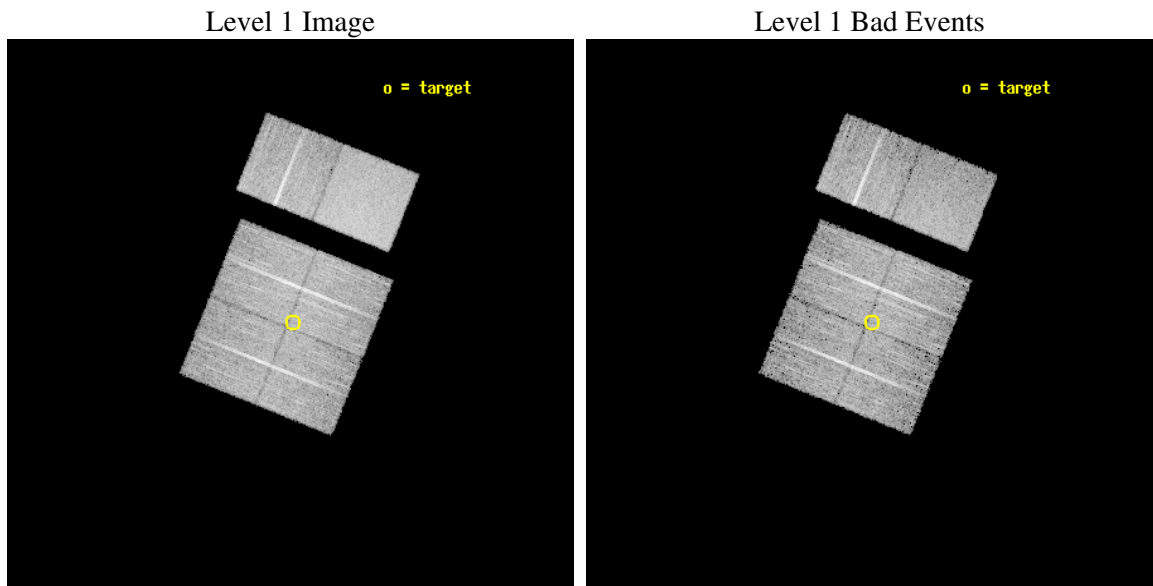
seq_num	400336
obs_id	4553
title	Precise Localization of GRO J2058+42
observer	COLLEEN WILSON
object	GRO J2058+42
dtcycle	0
cycle	P
ra_targ	314.75
dec_targ	41.716667
ra_nom	314.75613482747
dec_nom	41.716616041742
roll_nom	21.919310502264
revision	2
ontime	10028.79996264
livetime	9901.8092588945
ontime0	10028.79996264
ontime1	10028.79996264
ontime2	10028.79996264
ontime3	10028.79996264
ontime6	10028.79996264
ontime7	10028.79996264
l2events	66222



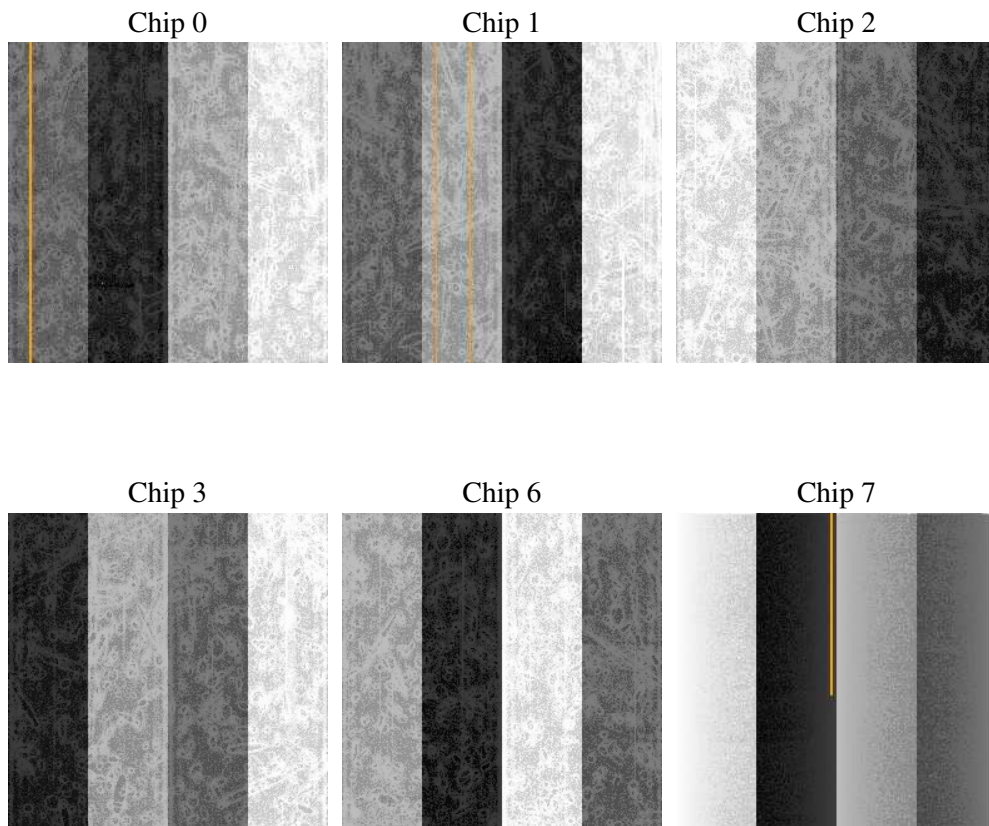
2 OBI

2.1 OBI

2.1.1 Images



2.1.2 Bias



2.1.3 Parameters

obi_num	1
ascdsver	7.6.7.2
caldbver	3.2.2
date	2006-06-02T15:52:17
revision	2

sched_exp_time	10000.000000
ontime	10034.145749241
ontime0	10037.386769354
ontime1	10037.386769354
ontime2	10034.145749241
ontime3	10034.145749241
ontime6	10034.145749241
ontime7	10034.145749241
l1events	414103

2.1.4 Events

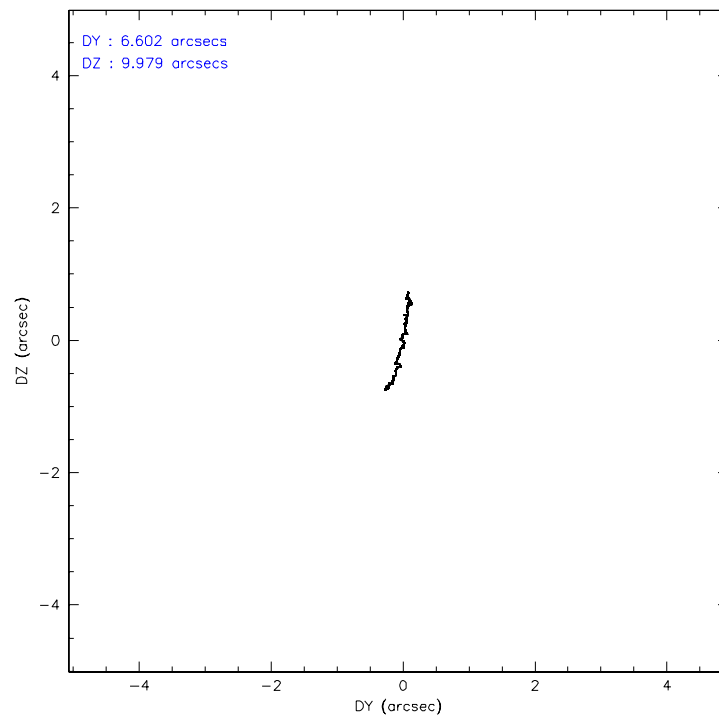
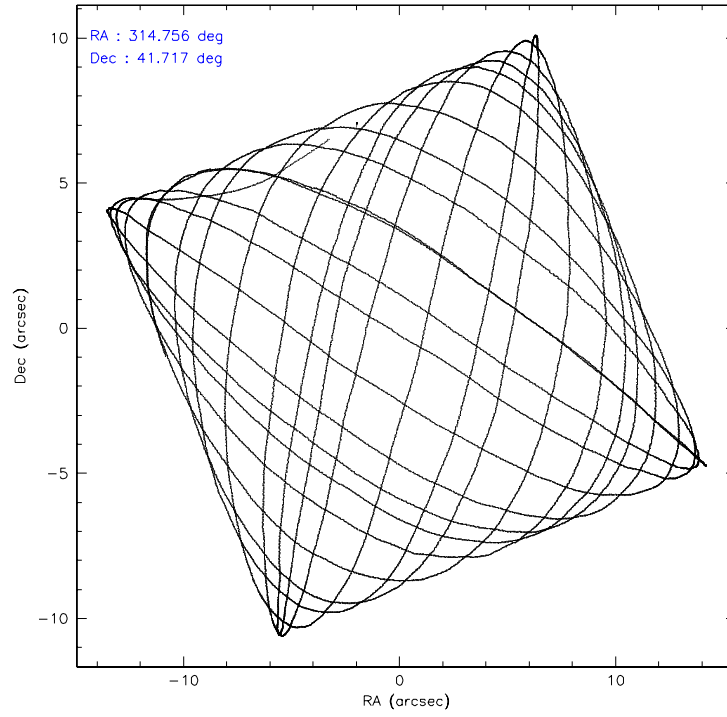
	ccd 0	ccd 1	ccd 2	ccd 3	ccd 6	ccd 7
level 1 events	59485	60992	67768	68440	67567	89851
rejected events	51675	52989	60232	60857	59723	56218
rejected %	86%	86%	88%	88%	88%	62%

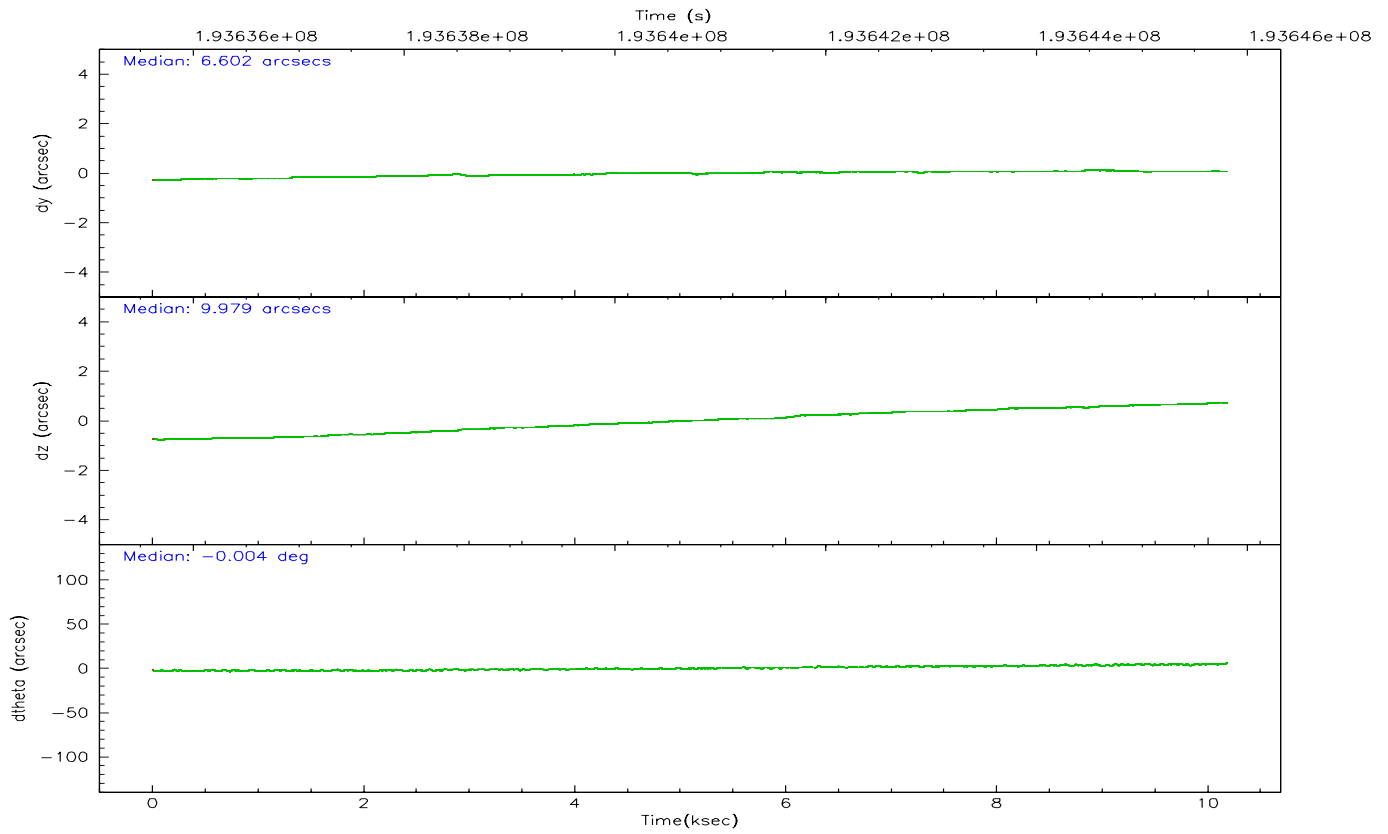
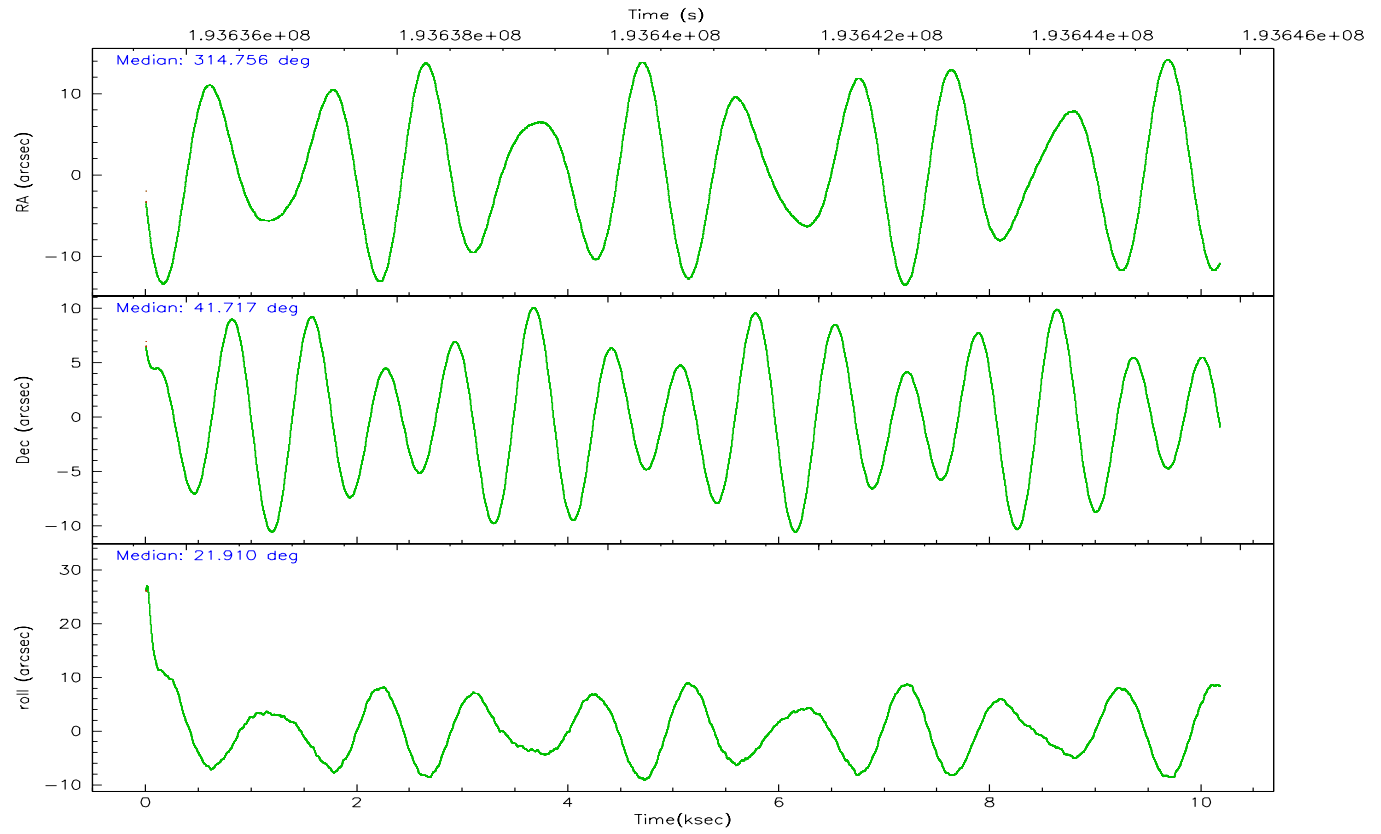
	ccd 0	ccd 1	ccd 2	ccd 3	ccd 6	ccd 7
grade 0 events	3214	3066	3256	3222	2867	1699
	5%	5%	4%	4%	4%	1%
grade 1 events	31	27	48	36	31	58
	0%	0%	0%	0%	0%	0%
grade 2 events	1612	1767	1542	1482	1709	8309
	2%	2%	2%	2%	2%	9%
grade 3 events	772	801	738	723	792	1691
	1%	1%	1%	1%	1%	1%
grade 4 events	759	796	715	757	775	1620
	1%	1%	1%	1%	1%	1%
grade 5 events	2694	2820	2631	2923	3226	5865
	4%	4%	3%	4%	4%	6%
grade 6 events	1456	1577	1290	1400	1702	20330
	2%	2%	1%	2%	2%	22%
grade 7 events	48947	50138	57548	57897	56465	50279
	82%	82%	84%	84%	83%	55%

2.2 Compared Parameters

Parameter	Planned	Actual	Parameter	Planned	Actual
Instrument	ACIS	ACIS	Obspar format version number	6	6
Detector	ACIS-012367	ACIS-012367	Obspar file type	PREDICTED	ACTUAL
Grating	HETG	HETG	Obspar update status	NONE	UPDATED
Data mode	FAINT	FAINT	On-chip summing requested	N	N
Observation mode	POINTING	POINTING	Subarray requested	NONE	NONE
Pointing RA	314.733706	314.7561348274744	Alternating exposures requested	N	N
Pointing Dec	41.694963	41.71661604174174	Primary exposure time	0.000000	3.2
Pointing Roll	21.725530	21.91931050226427			
SIM focus pos (mm)	-0.782348	-0.7809083437167272			
SIM defocus (mm)	0	0.001439871863259334			
SIM translation stage pos (mm)	-233.592463	-233.5874344608287			
SIM translation stage offset (mm)	0	-0.005018542100998502			
Phase constraints	Y	Y			
Phase period	55.030000	55.030000			
Phase epoch	52667.530000	52667.530000			
Phase start	0.900000	0.900000			
Phase end	0.110000	0.110000			
Phase start error	0.020000	0.020000			
Phase end error	0.020000	0.020000			
Observation start time	193635801.184000	193634674.08704			
Observation start date	2004-02-20T03:42:17	2004-02-20T03:24:34			
Observation end time	193645801.184000	193647202.66259			
Observation end date	2004-02-20T06:28:57	2004-02-20T06:53:22			
Read mode	TIMED	TIMED			

2.3 Aspect



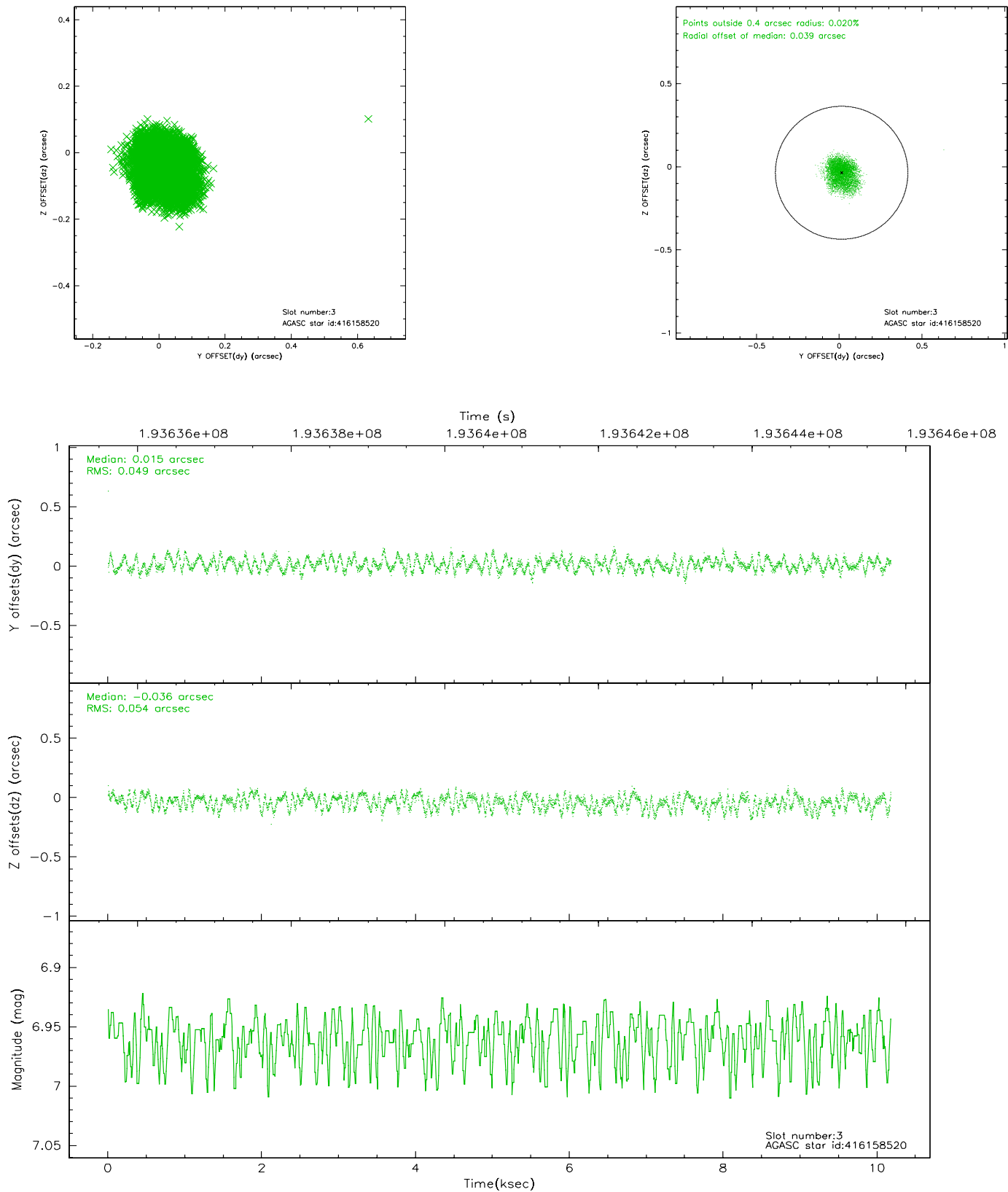


Slot Statistics

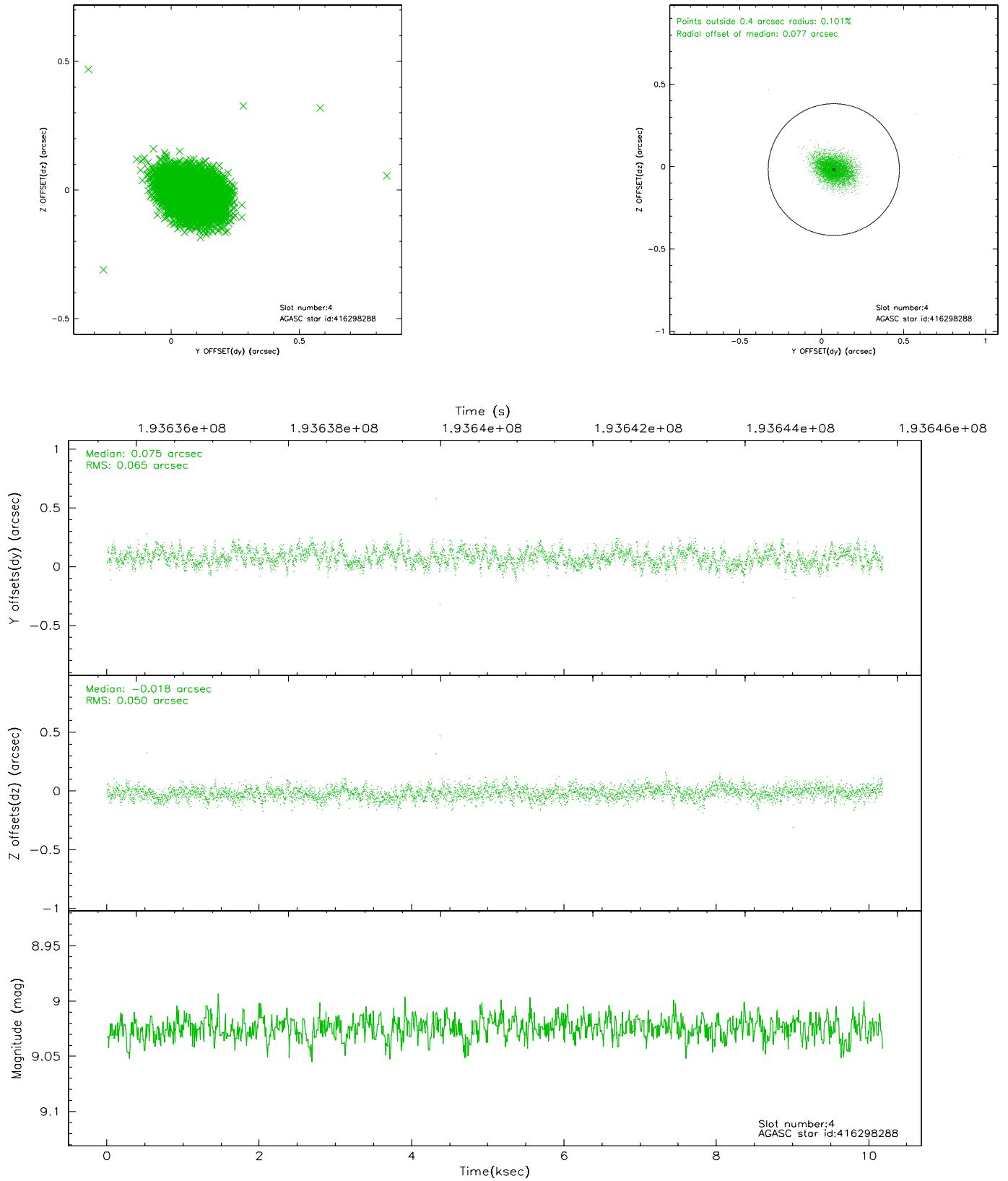
slot	status	id	mag	n_pts	med_dy	med_dz	dr1	dr2	ra	dec	mean_y	mean_z
0	FID	ACIS-I-1	7.24	2484	0.015	0.011	0.010	0.018	0.000000	0.000000	933.16	-833.40
1	FID	ACIS-I-5	7.23	2483	-0.023	0.074	0.017	0.029	0.000000	0.000000	-1814.75	1063.82
2	FID	ACIS-I-6	7.24	2484	-0.082	-0.014	0.025	0.037	0.000000	0.000000	397.98	1708.88
3	GUIDE	416158520	6.96	4967	0.015	-0.036	0.079	0.121	314.852578	42.324470	1132.95	1988.37
4	GUIDE	416298288	9.02	4964	0.075	-0.018	0.084	0.138	315.665844	41.285867	1803.31	-2288.38
5	GUIDE	416299344	8.99	4967	-0.006	0.128	0.075	0.124	315.621297	41.414225	1857.40	-1814.70
6	GUIDE	415638136	8.86	4966	-0.110	0.075	0.096	0.159	314.508480	40.901228	-1625.83	-2427.59
7	GUIDE	416155792	8.59	4966	0.020	-0.153	0.073	0.117	314.056299	42.197523	-1006.43	2355.18

2.4 Star Slots

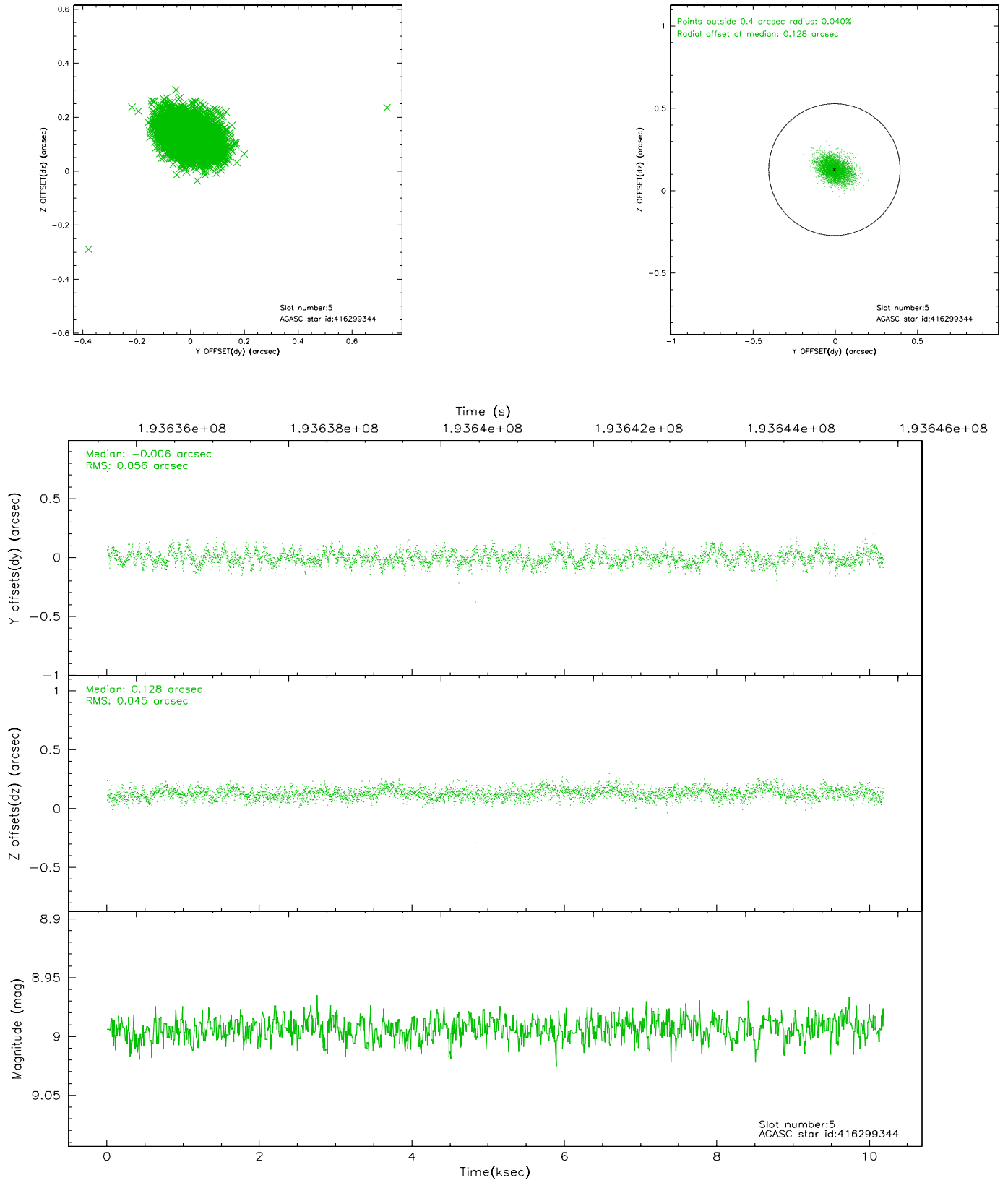
2.4.1 Slot 3



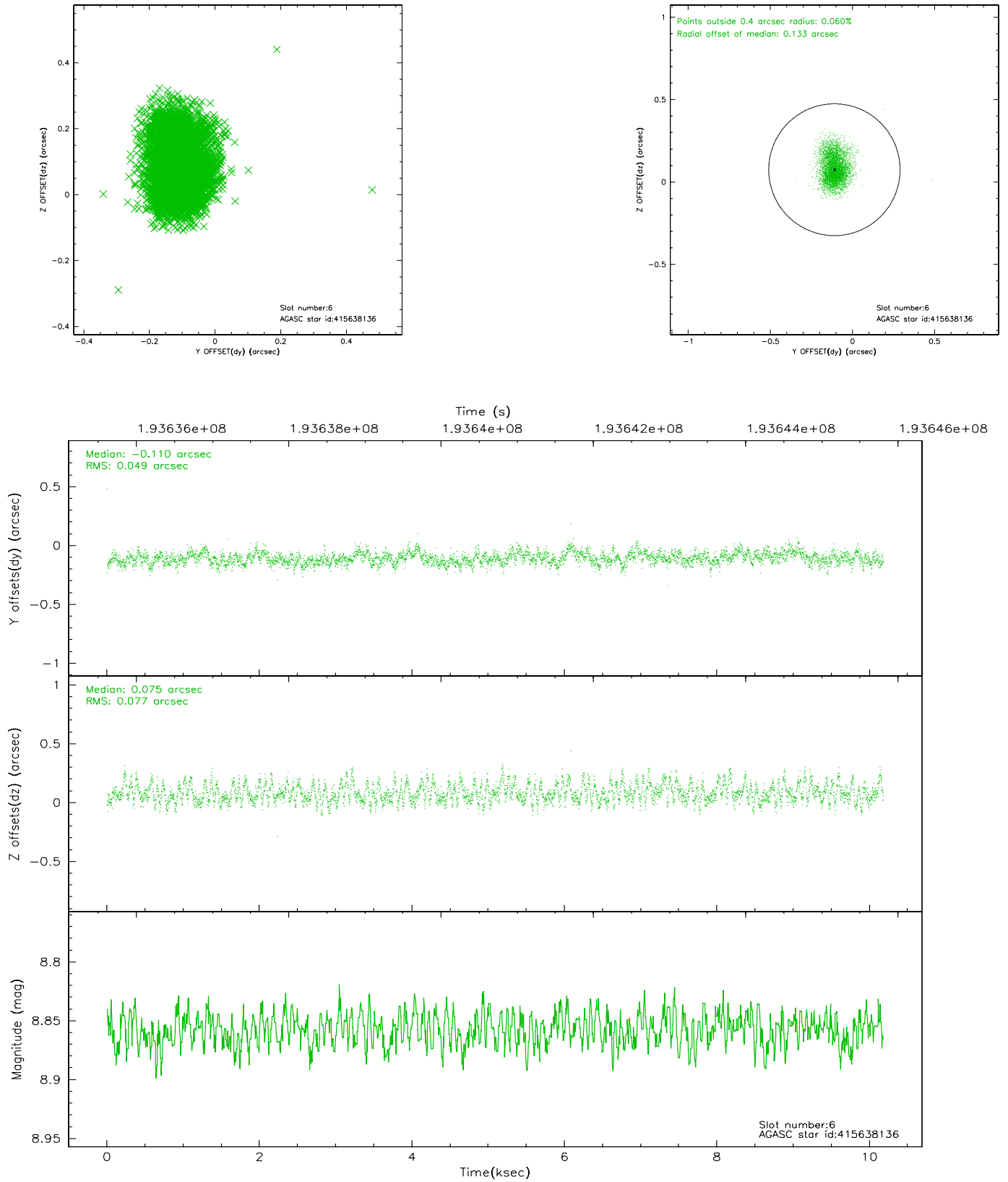
2.4.2 Slot 4



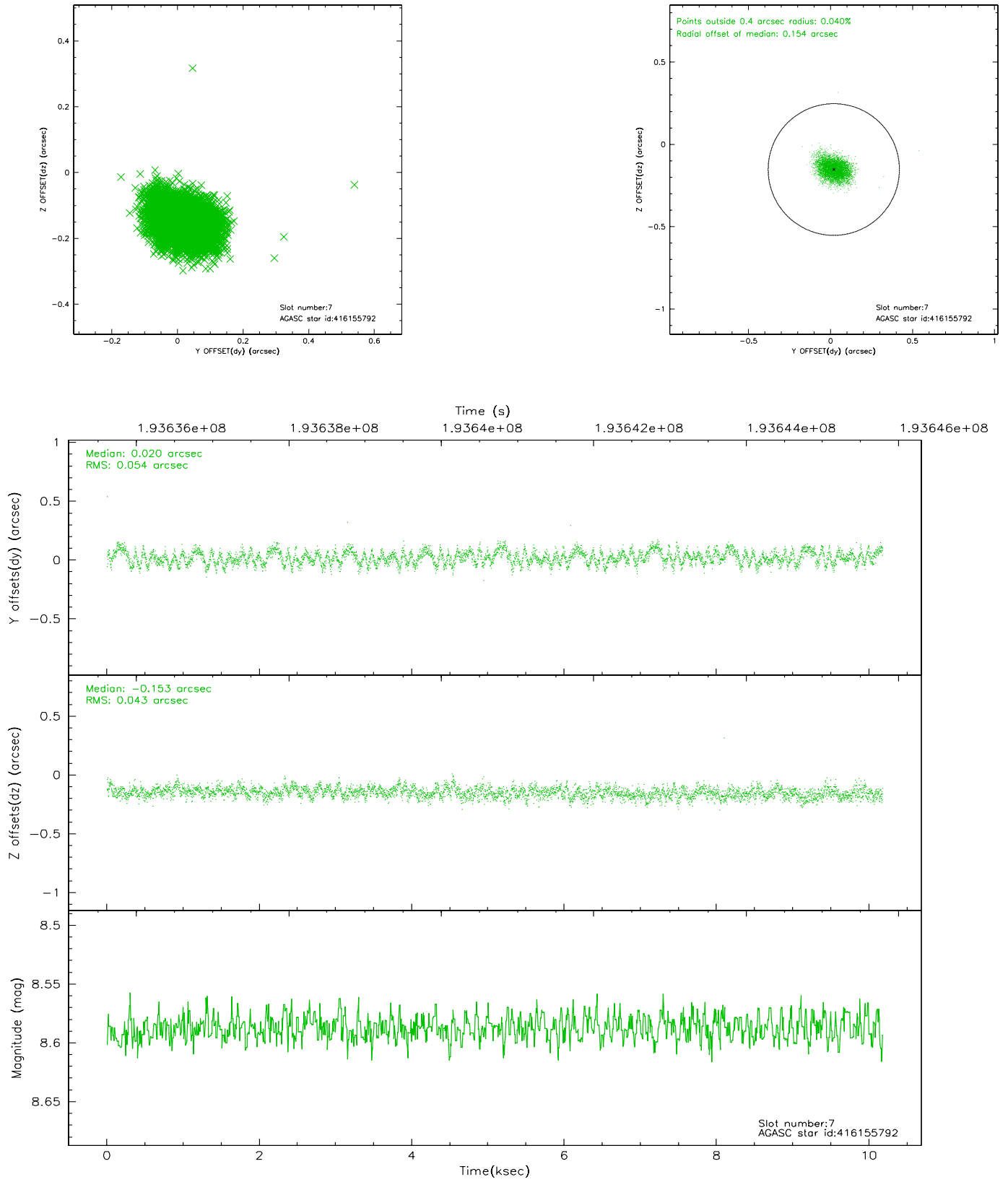
2.4.3 Slot 5



2.4.4 Slot 6

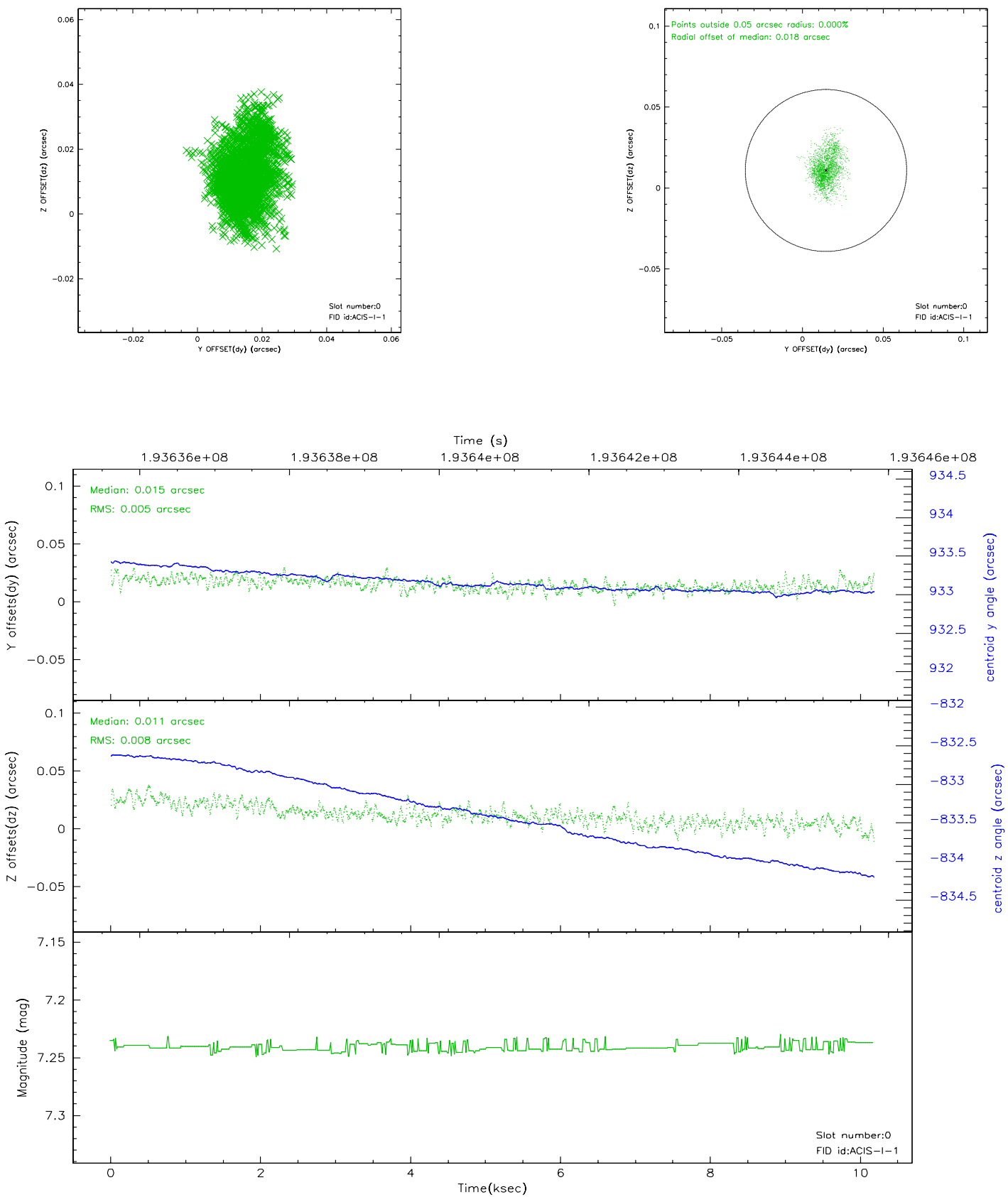


2.4.5 Slot 7

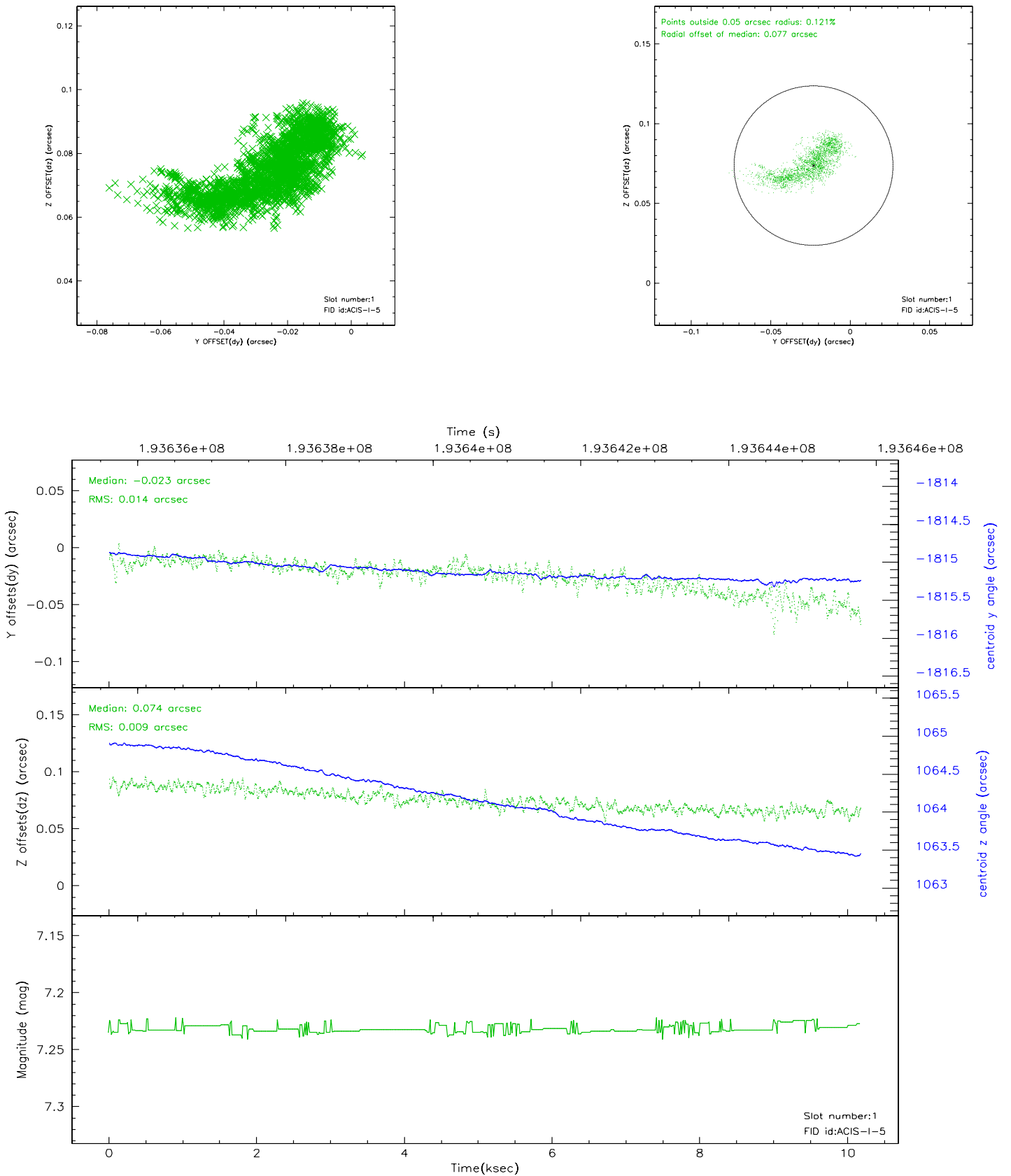


2.5 FID Slots

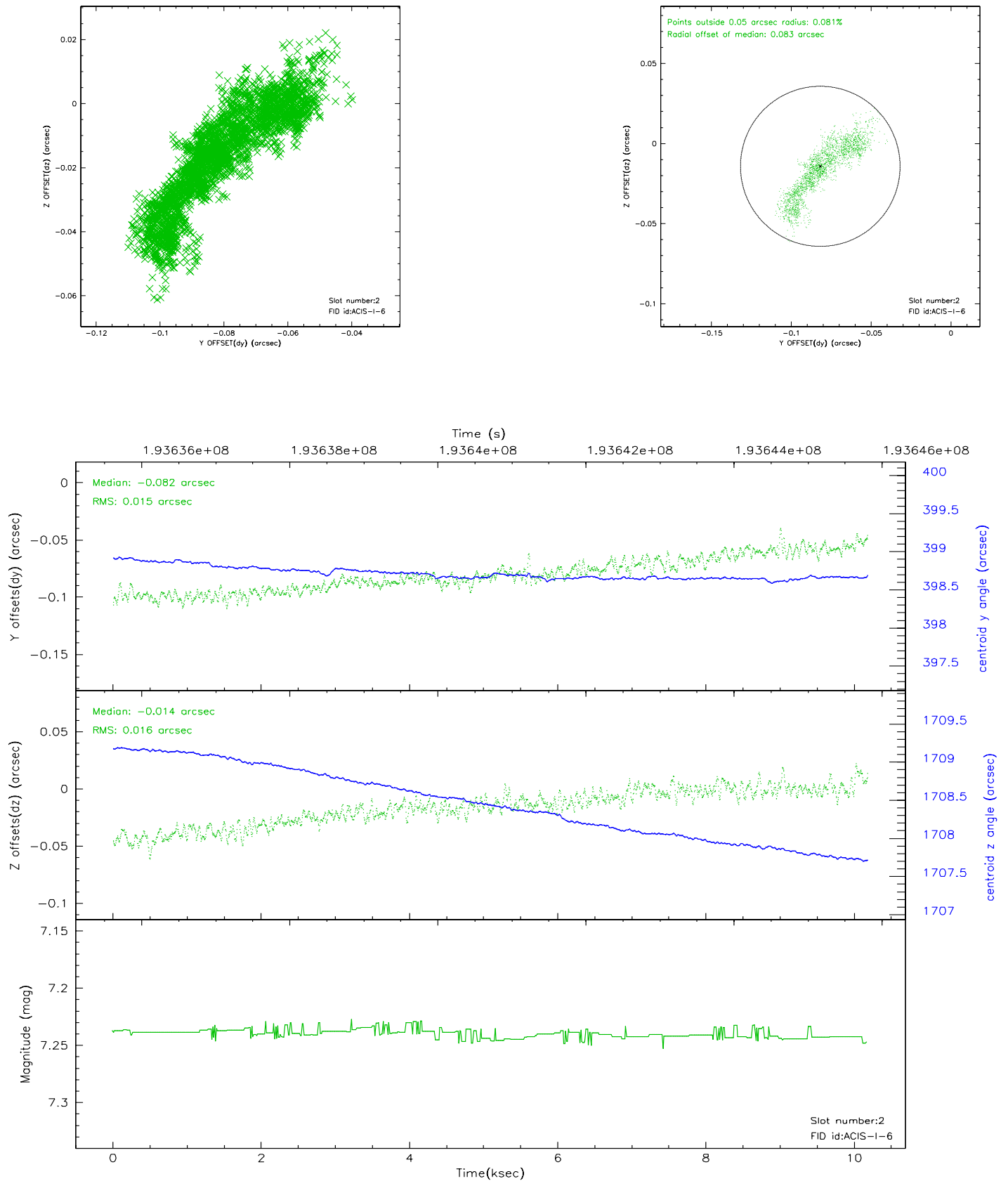
2.5.1 Slot 0



2.5.2 Slot 1



2.5.3 Slot 2

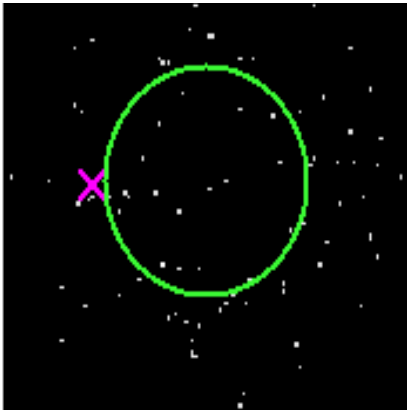


3 Gratings

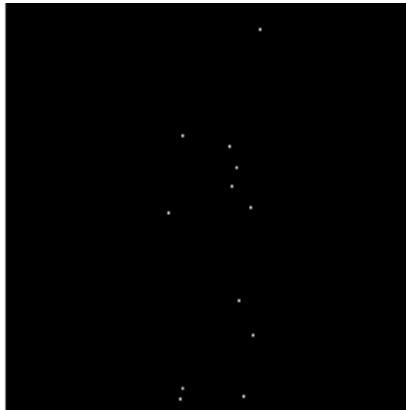
3.1 HEG Arm



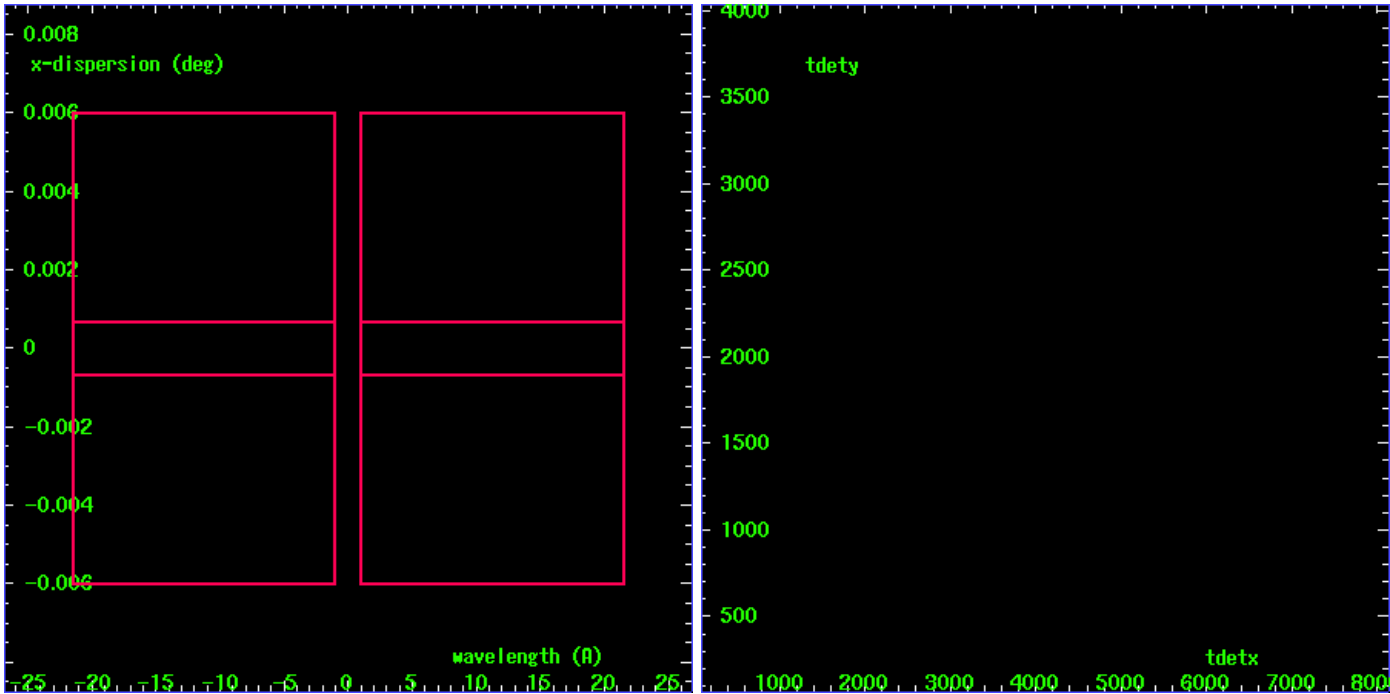
HEG Order Sort 123



HEG Zero Order



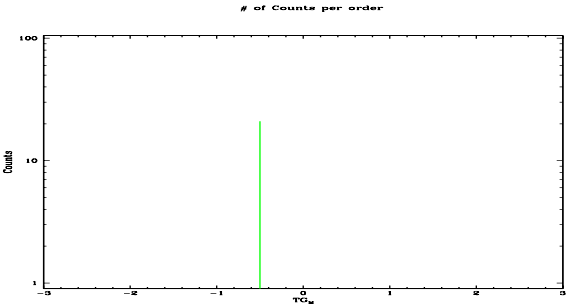
HEG Order Sort ALL

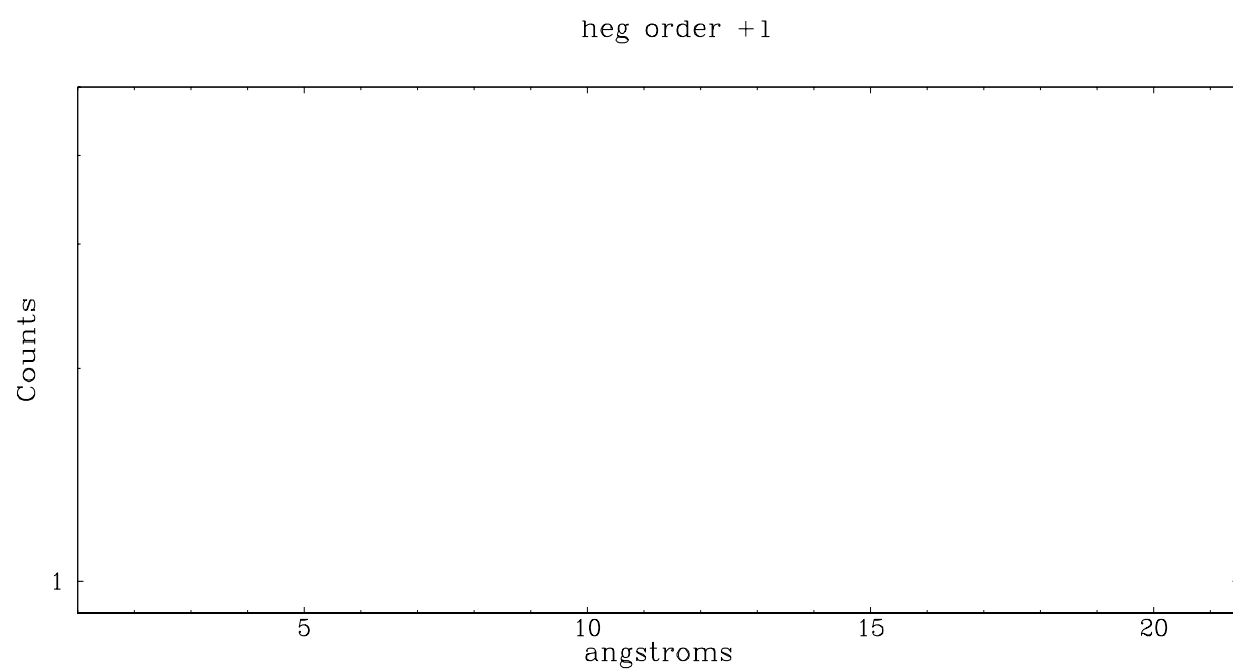
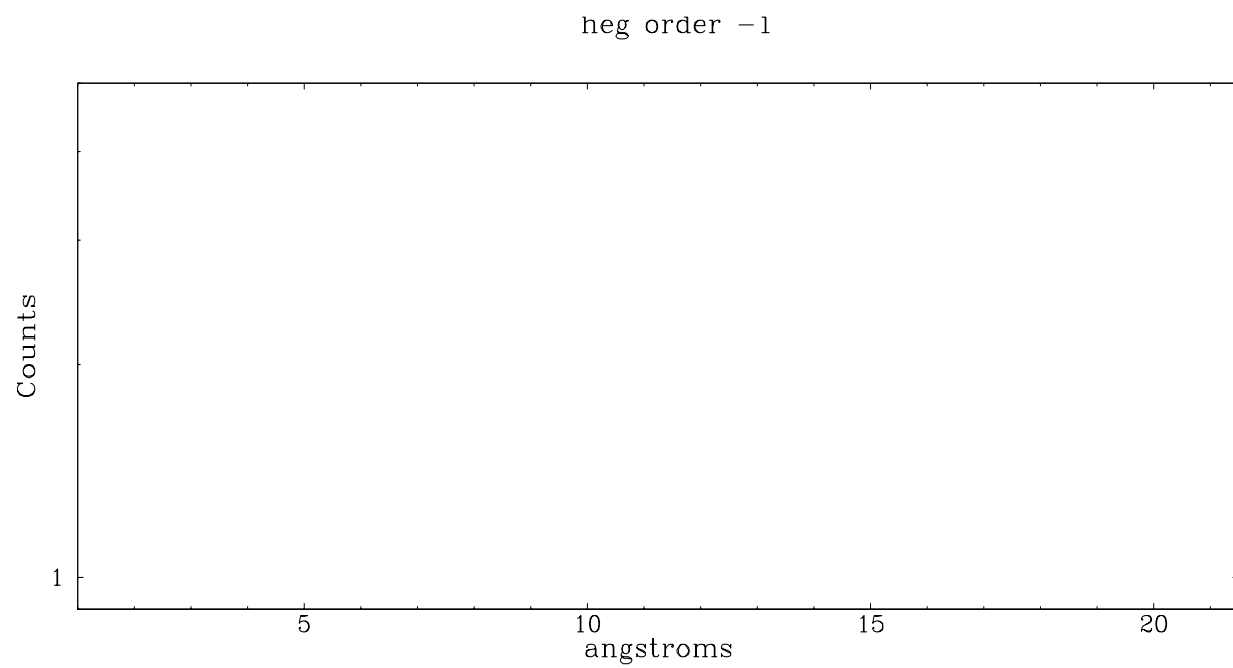


Spot Image HEG

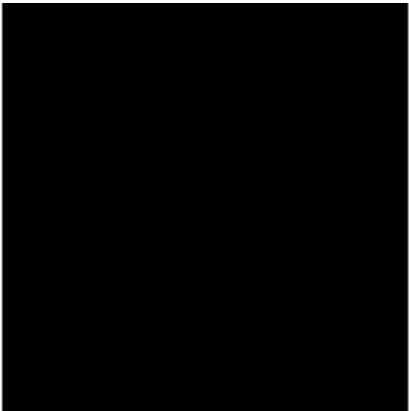
Full Detector HEG

	order -3	order -2	order -1	order 0	order 1	order 2	order 3
Events	0	0	0	21	0	0	0

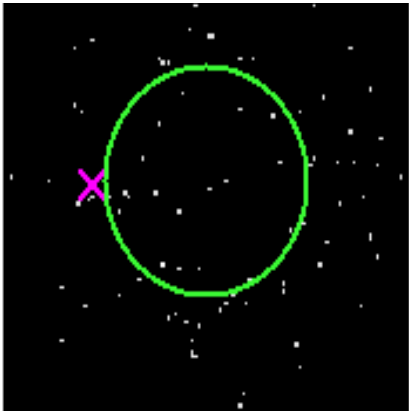




3.2 MEG Arm



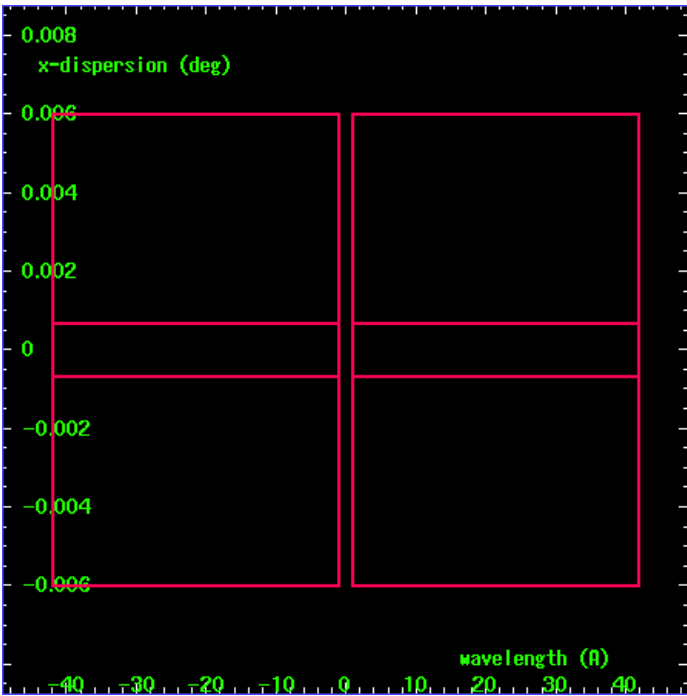
MEG Order Sort 123



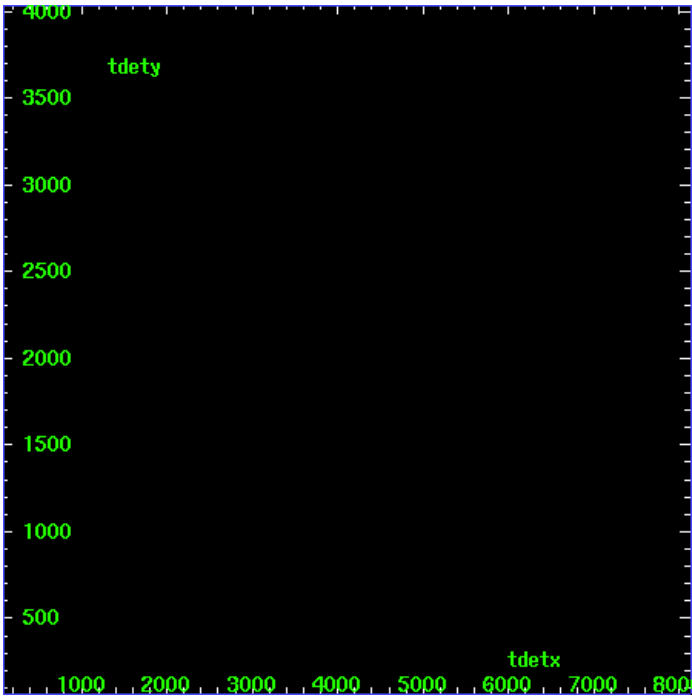
MEG Zero Order



MEG Order Sort ALL

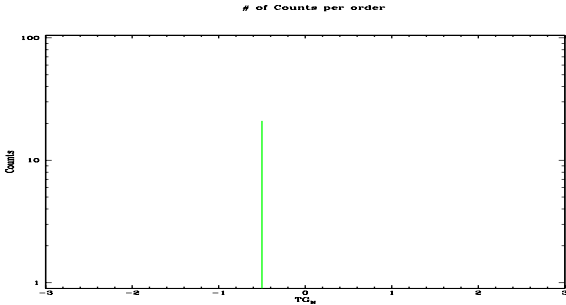


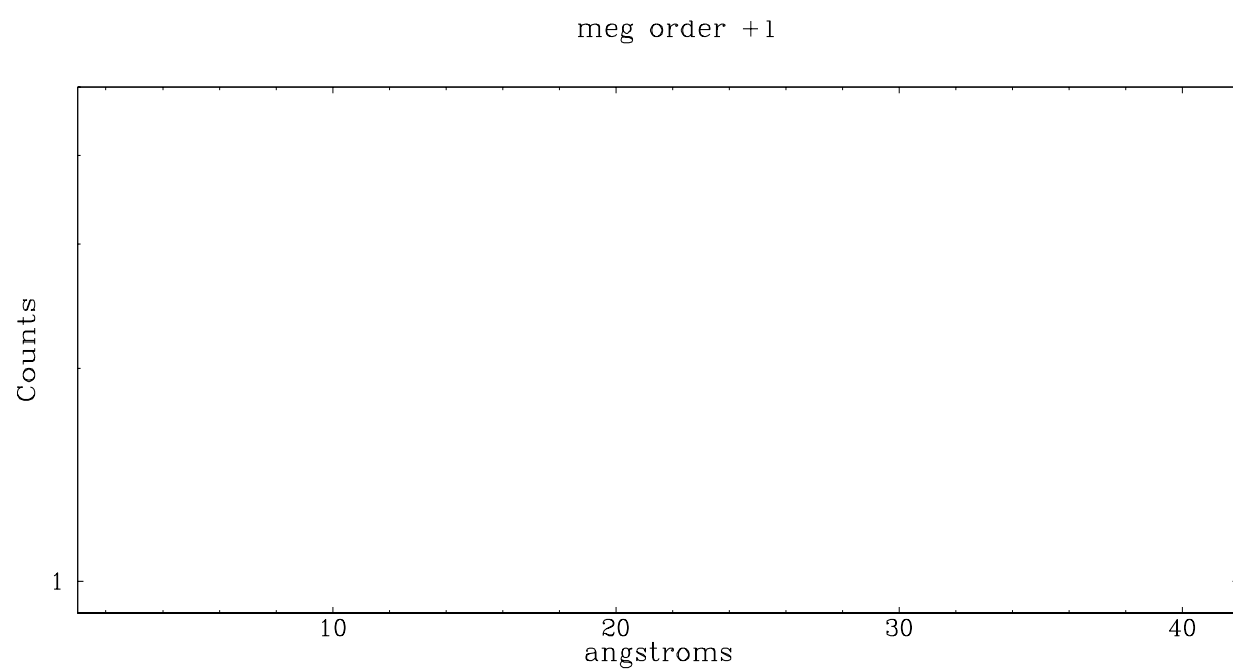
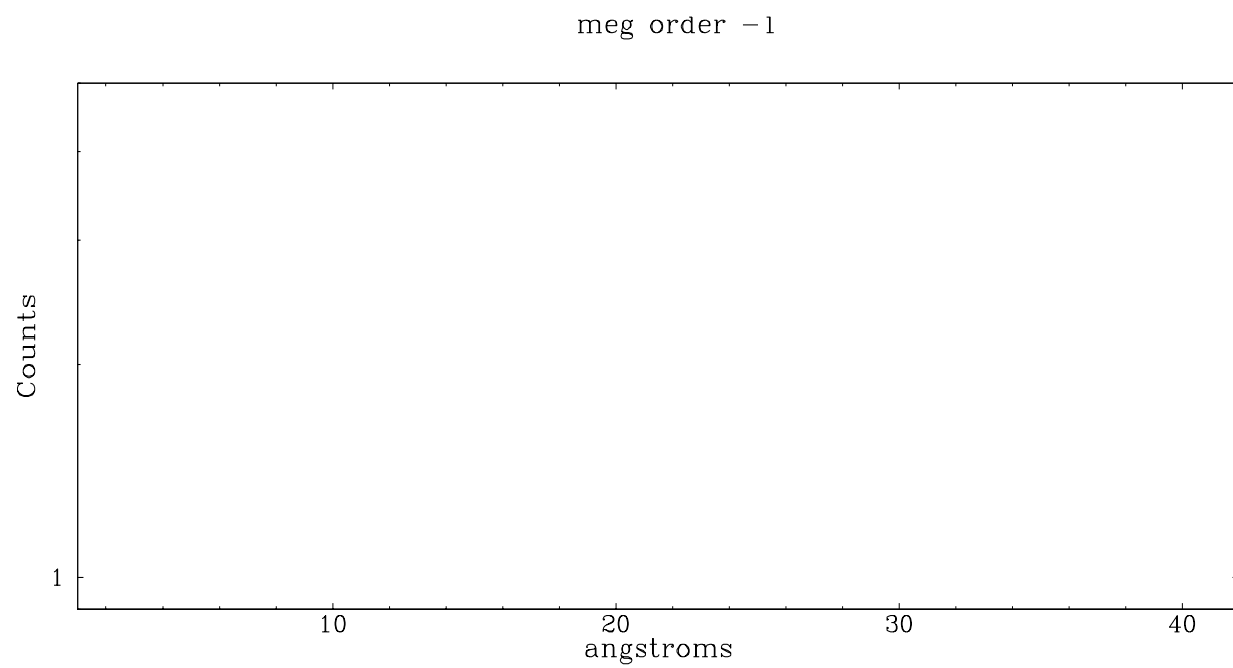
Spot Image MEG



Full Detector MEG

	order -3	order -2	order -1	order 0	order 1	order 2	order 3
Events	0	0	0	21	0	0	0





A Summary

A.1 Status

V&V Scientist	Jen Lauer
V&V Date (YYYY-MM-DD)	2006.06.05
V&V Edition	1
V&V Disposition and Status	OK
V&V Charge Time	10.028

A.2 Comments

Non-standard mode. Gratings used only as a neutral density filter, therefore standard Level 1.5 products not applicable (although generated by pipeline processing).

Observation occurred at MJD 53055.1, which corresponds to a phase of 0.04 in the orbital ephemeris. This was within the allowed tolerance on the target forms: phase constraint met.