

V&V Reference Report

L2 ASCDS Version : 8.4.5

Observation 4543 - L2 Version 3
Chandra X-Ray Center

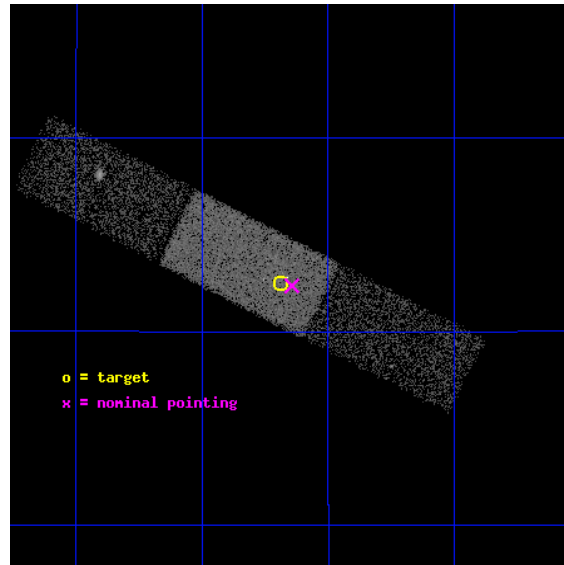
L2 Processing Date : Dec 1 2012

Contents

1	Front	2
2	OBI	3
2.1	OBI	3
2.1.1	Images	3
2.1.2	Bias	3
2.1.3	Parameters	4
2.1.4	Events	4
2.2	Compared Parameters	5
2.3	Aspect	6
2.4	Star Slots	9
2.4.1	Slot 3	9
2.4.2	Slot 4	10
2.4.3	Slot 5	11
2.4.4	Slot 6	12
2.4.5	Slot 7	13
2.5	FID Slots	14
2.5.1	Slot 0	14
2.5.2	Slot 1	15
2.5.3	Slot 2	16
A	Summary	17
A.1	Status	17
A.2	Comments	17

1 Front

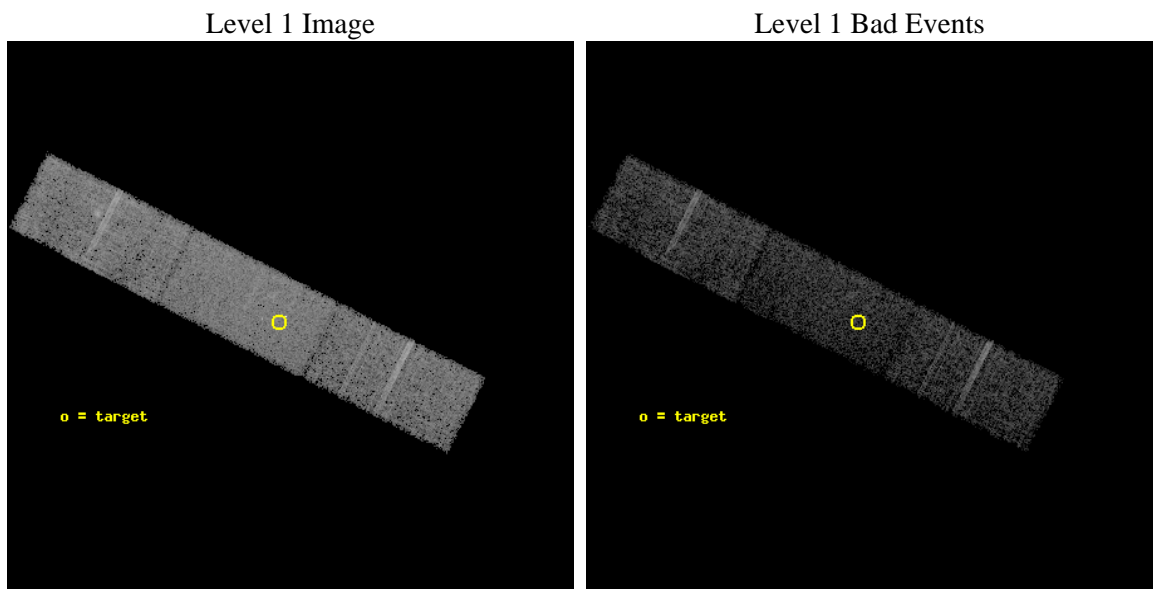
seq_num	300137	Sequence number
obs_id	4543	Observation id
title	The Supersoft Source 1E1339.8+2837 and Globular Cluster M3	Proposa
observer	Professor Johnathan Grindlay	Principal investigator
object	M3	Source name
dtcycle	0	
cycle	P	events from which exps? Prim/Second/Both
ra_targ	205.546667	Observer's specified target RA [deg]
dec_targ	28.375556	Observer's specified target Dec [deg]
ra_nom	205.53605846843	Nominal RA [deg]
dec_nom	28.372727796211	Nominal Dec [deg]
roll_nom	206.98291614437	Nominal Roll [deg]
revision	3	Processing version of data
ontime	10412.799961179	Sum of GTIs [s]
livetime	10152.391128728	Livetime [s]
ontime6	10412.799961179	Sum of GTIs [s]
ontime7	10412.799961179	Sum of GTIs [s]
ontime8	10412.799961179	Sum of GTIs [s]
l2events	30665	Number of level 2 events



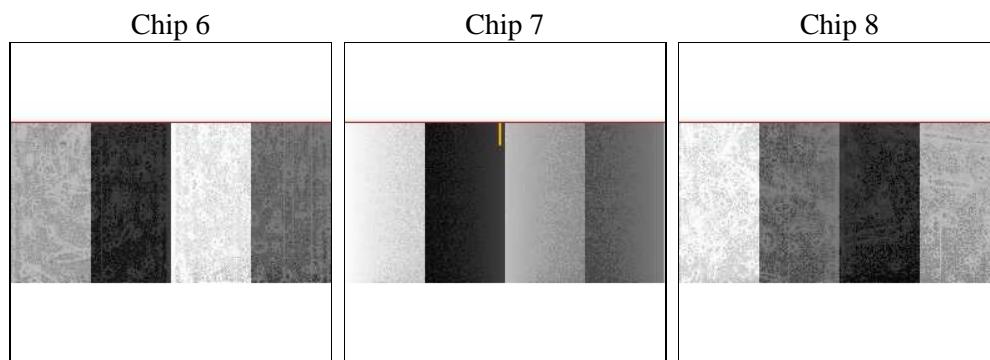
2 OBI

2.1 OBI

2.1.1 Images



2.1.2 Bias



2.1.3 Parameters

obi_num	0	Obi number	sched_exp_time	10000.000000	[s] Scheduled observation exposure time
ascdsver	8.4.5	Processing system revision	ontime	10412.799961179	Sum of GTIs [s]
caldsver	4.5.2	 	ontime6	10412.799961179	Sum of GTIs [s]
date	2012-12-01T04:34:37	Date and time of file creation	ontime7	10412.799961179	Sum of GTIs [s]
revision	3	Processing version of data	ontime8	10412.799961179	Sum of GTIs [s]
			l1events	148585	Number of level 1 events

2.1.4 Events

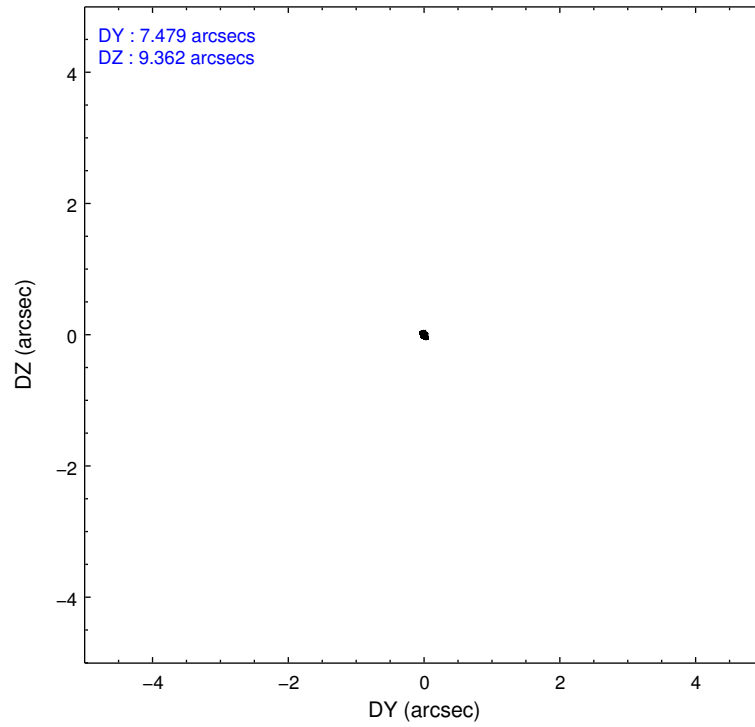
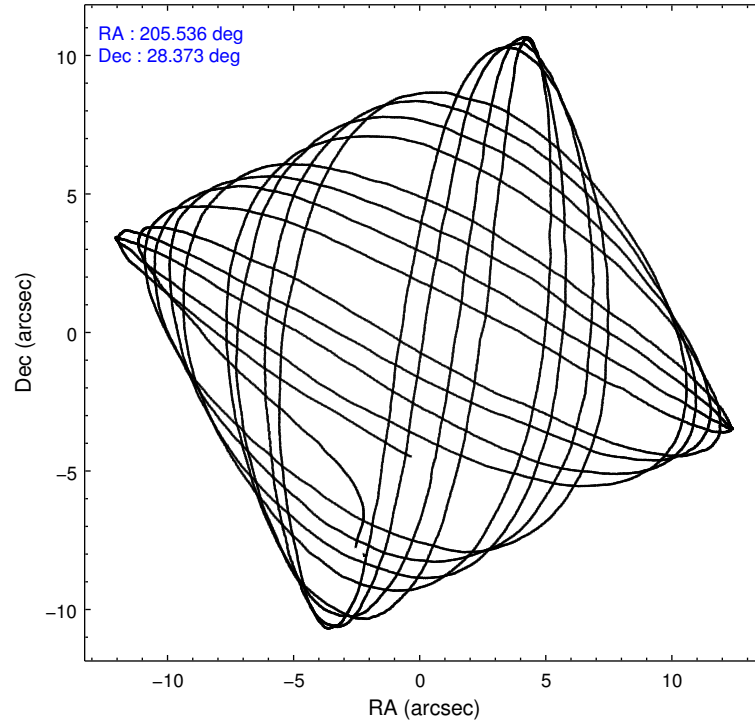
	ccd 6	ccd 7	ccd 8
level 1 events	41739	53016	53830
rejected events	36826	30570	42896
rejected %	88%	57%	79%

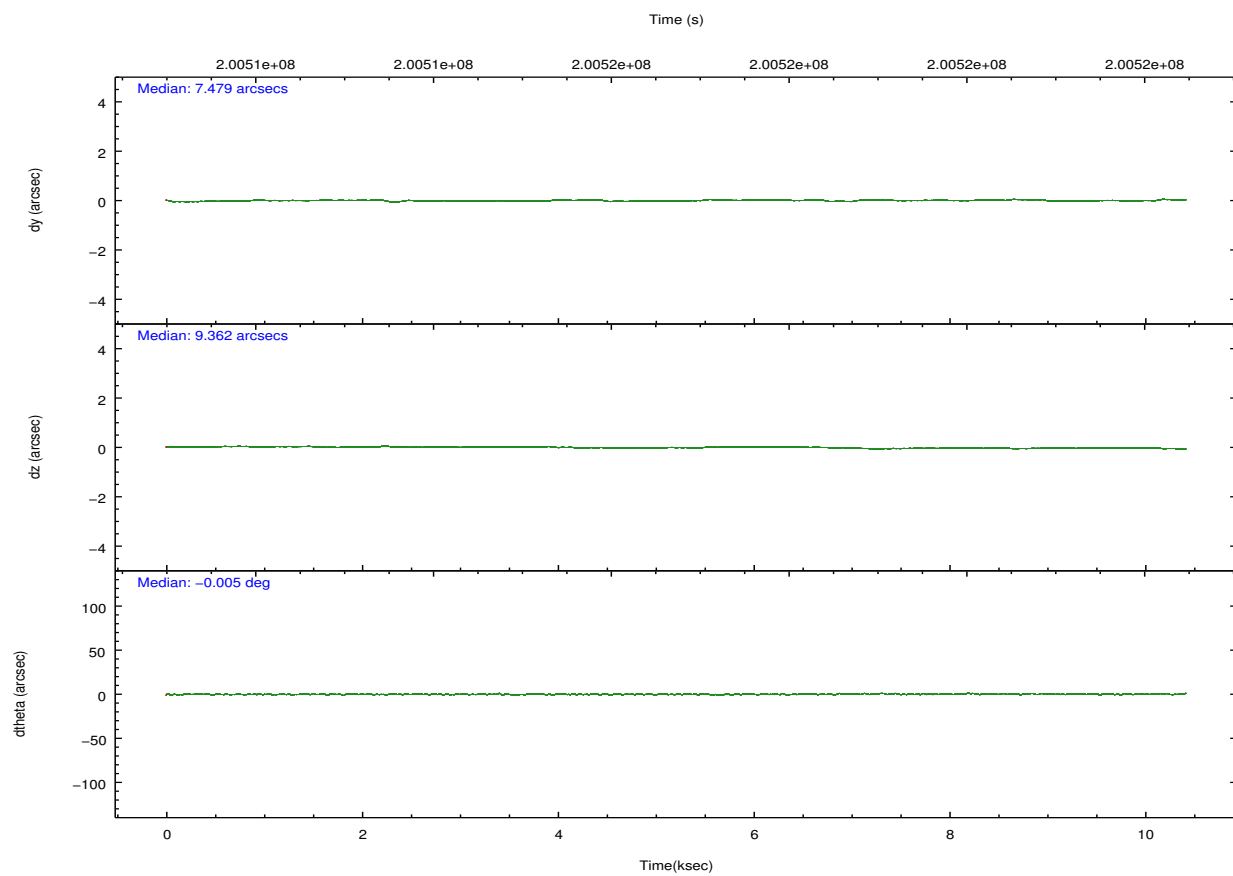
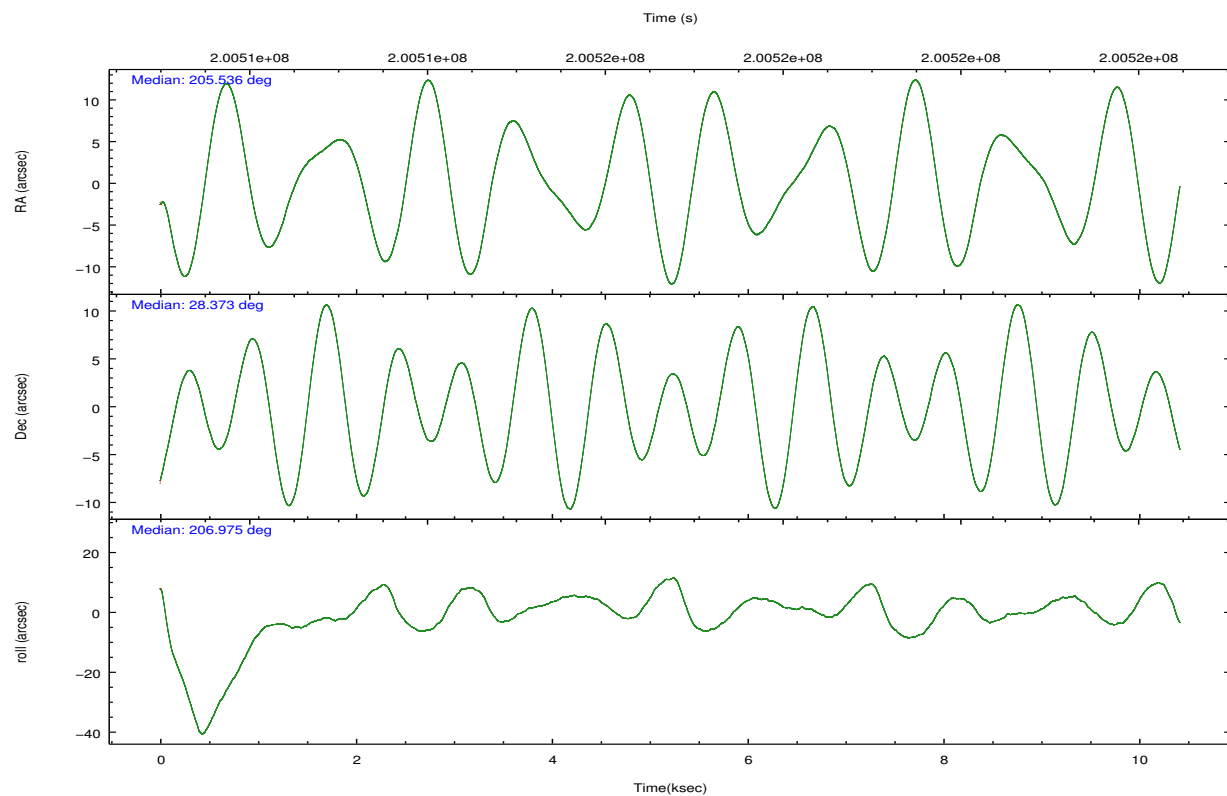
	ccd 6	ccd 7	ccd 8
grade 0 events	1890	2408	3460
	4%	4%	6%
grade 1 events	11	49	24
	0%	0%	0%
grade 2 events	1036	4728	2323
	2%	8%	4%
grade 3 events	590	2187	1216
	1%	4%	2%
grade 4 events	547	2188	1208
	1%	4%	2%
grade 5 events	1866	5064	2317
	4%	9%	4%
grade 6 events	934	11356	2885
	2%	21%	5%
grade 7 events	34865	25036	40397
	83%	47%	75%

2.2 Compared Parameters

Parameter	Planned	Actual	Parameter	Planned	Actual
Instrument	ACIS	ACIS	Obspar format version number	7	7
Detector	ACIS-678	ACIS-678	Obspar file type	PREDICTED	ACTUAL
Grating	NONE	NONE	Obspar update status	NONE	UPDATED
Data mode	VFAINT	VFAINT	Number of optional ACIS chips dropped	0	0
Observation mode	POINTING	POINTING	On-chip summing requested	N	N
[deg] Pointing RA	205.552665	205.5360584684263	Subarray requested	CUSTOM	1/2
[deg] Pointing Dec	28.395779	28.37272779621106	Subarray start row	257	257
[deg] Pointing Roll	206.818355	206.9829161443703	Subarray row count	512	512
[mm] SIM focus pos	-0.684267	-0.6828225247311905	Alternating exposures requested	N	N
[mm] SIM defocus	0	0.001444936568705701	[s] Primary exposure time	0.000000	1.6
[mm] SIM translation stage pos	-190.132523	-190.1400660498719			
[mm] SIM translation stage offset	0	0.00754346686406393			
[s] Observation start time (MET)	200511930.184000	200510856.13925			
Observation start date	2004-05-09T17:44:26	2004-05-09T17:27:36			
[s] Observation end time (MET)	200521930.184000	200522502.70226			
Observation end date	2004-05-09T20:31:06	2004-05-09T20:41:42			
Read mode	TIMED	TIMED			

2.3 Aspect



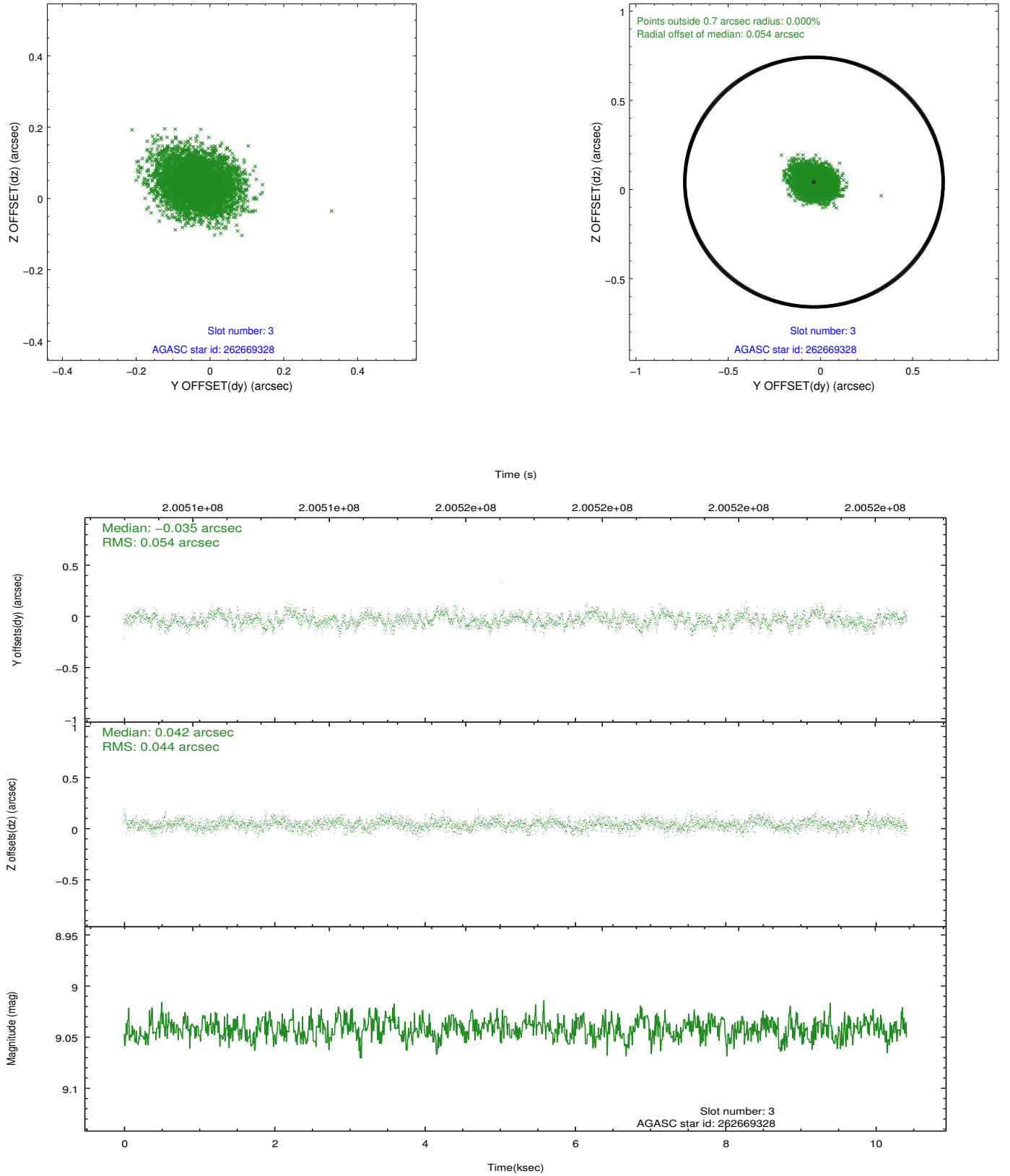


Slot Statistics

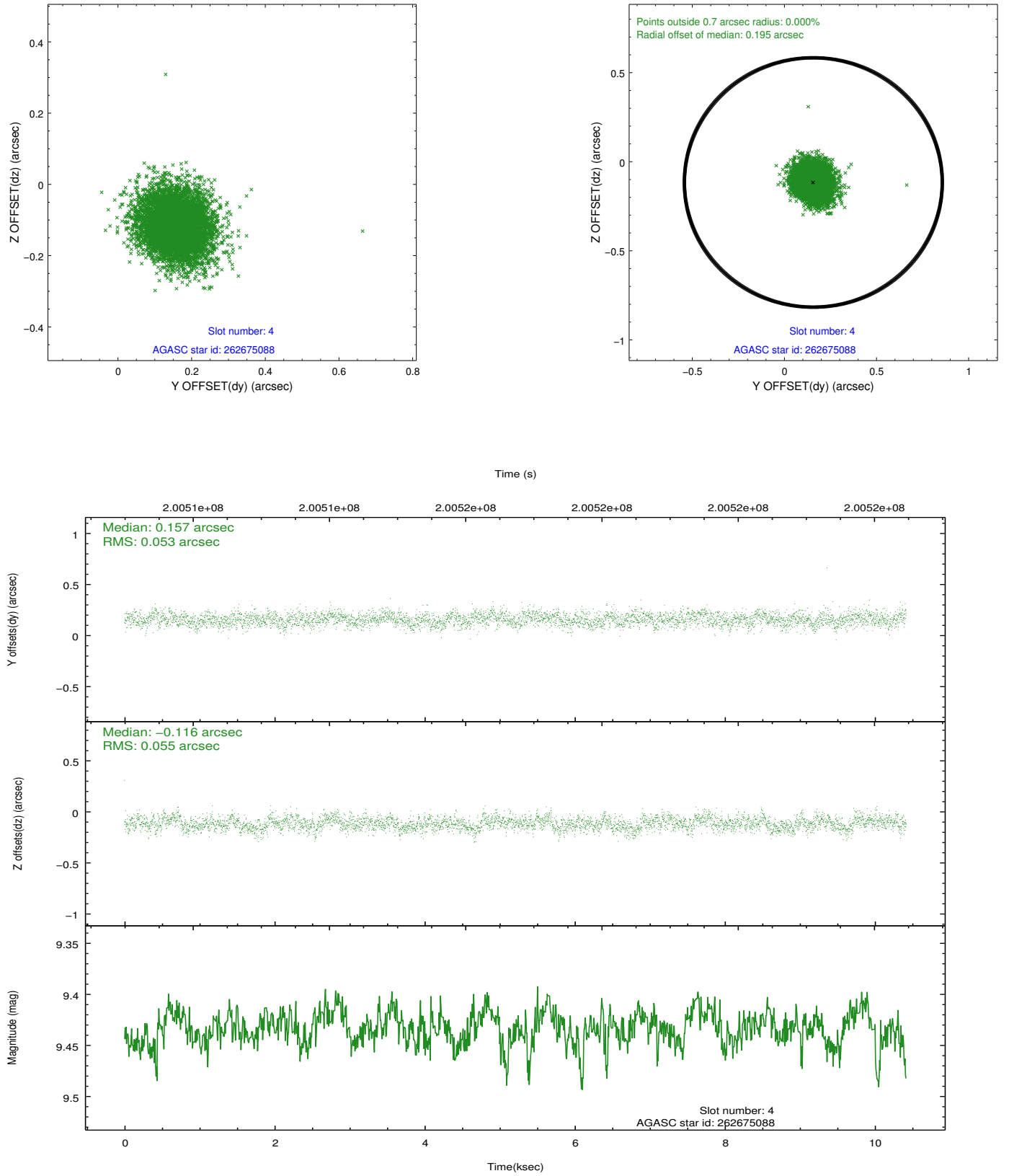
slot	status	id	mag	n_pts	med_dy	med_dz	dr1	dr2	ra	dec	mean_y	mean_z
0	FID	ACIS-S-2	7.10	2541	-0.032	-0.033	0.007	0.010	0.000000	0.000000	-760.25	-1730.63
1	FID	ACIS-S-4	7.20	2541	0.084	0.024	0.006	0.010	0.000000	0.000000	2152.89	177.43
2	FID	ACIS-S-5	7.24	2541	-0.082	0.017	0.007	0.011	0.000000	0.000000	-1812.52	171.61
3	GUIDE	262669328	9.04	5081	-0.035	0.042	0.074	0.121	206.280601	28.188398	-1727.90	1702.20
4	GUIDE	262675088	9.43	5049	0.157	-0.116	0.081	0.130	204.972671	28.348526	1714.67	-680.53
5	GUIDE	262676040	9.16	5079	-0.033	0.052	0.084	0.137	205.599968	27.875331	711.22	1740.11
6	GUIDE	262679552	8.58	5078	-0.031	-0.053	0.088	0.134	205.617019	28.202388	132.09	713.96
7	GUIDE	262681752	9.57	5076	-0.059	0.076	0.088	0.144	205.441552	28.454810	217.96	-348.00

2.4 Star Slots

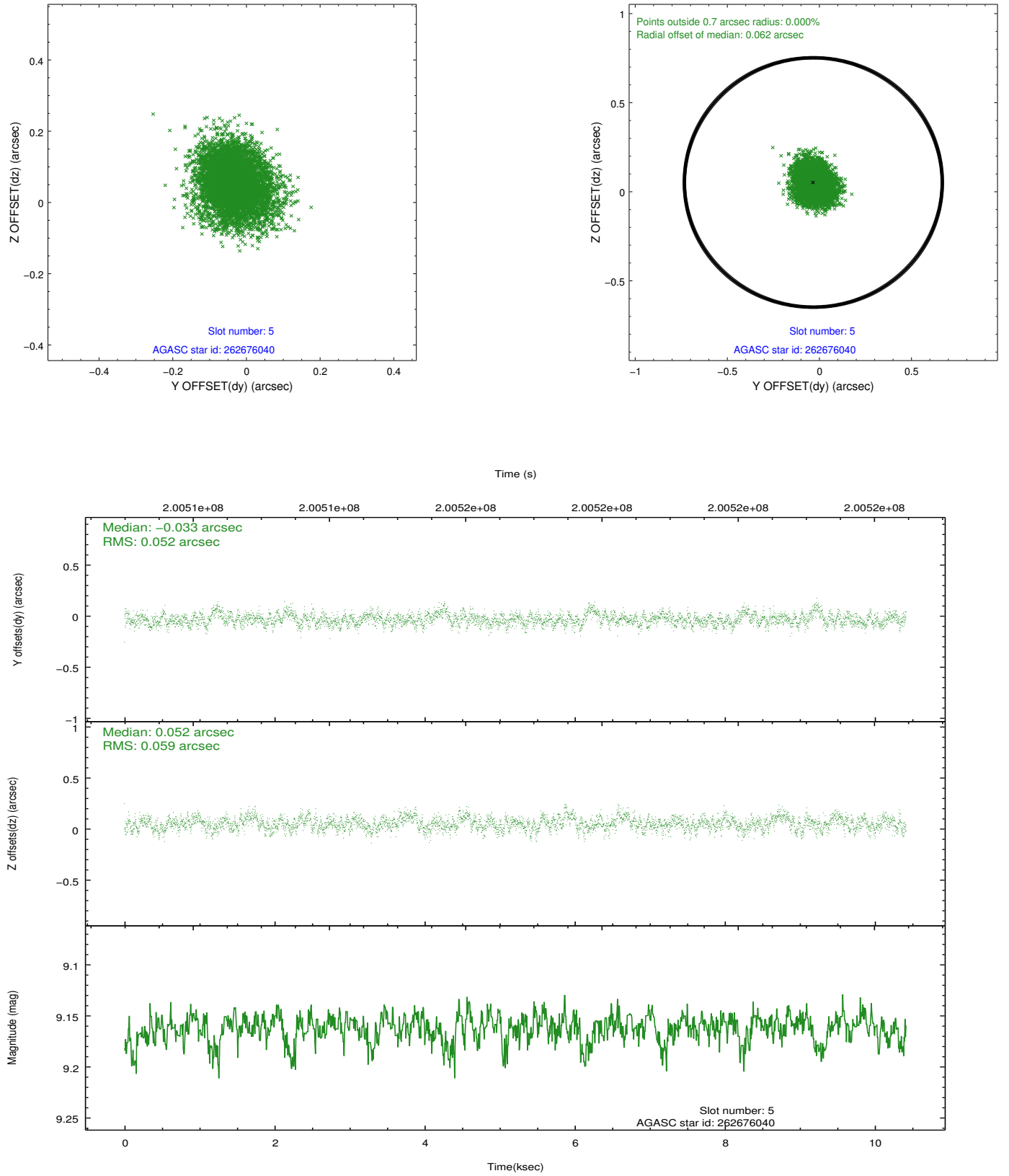
2.4.1 Slot 3



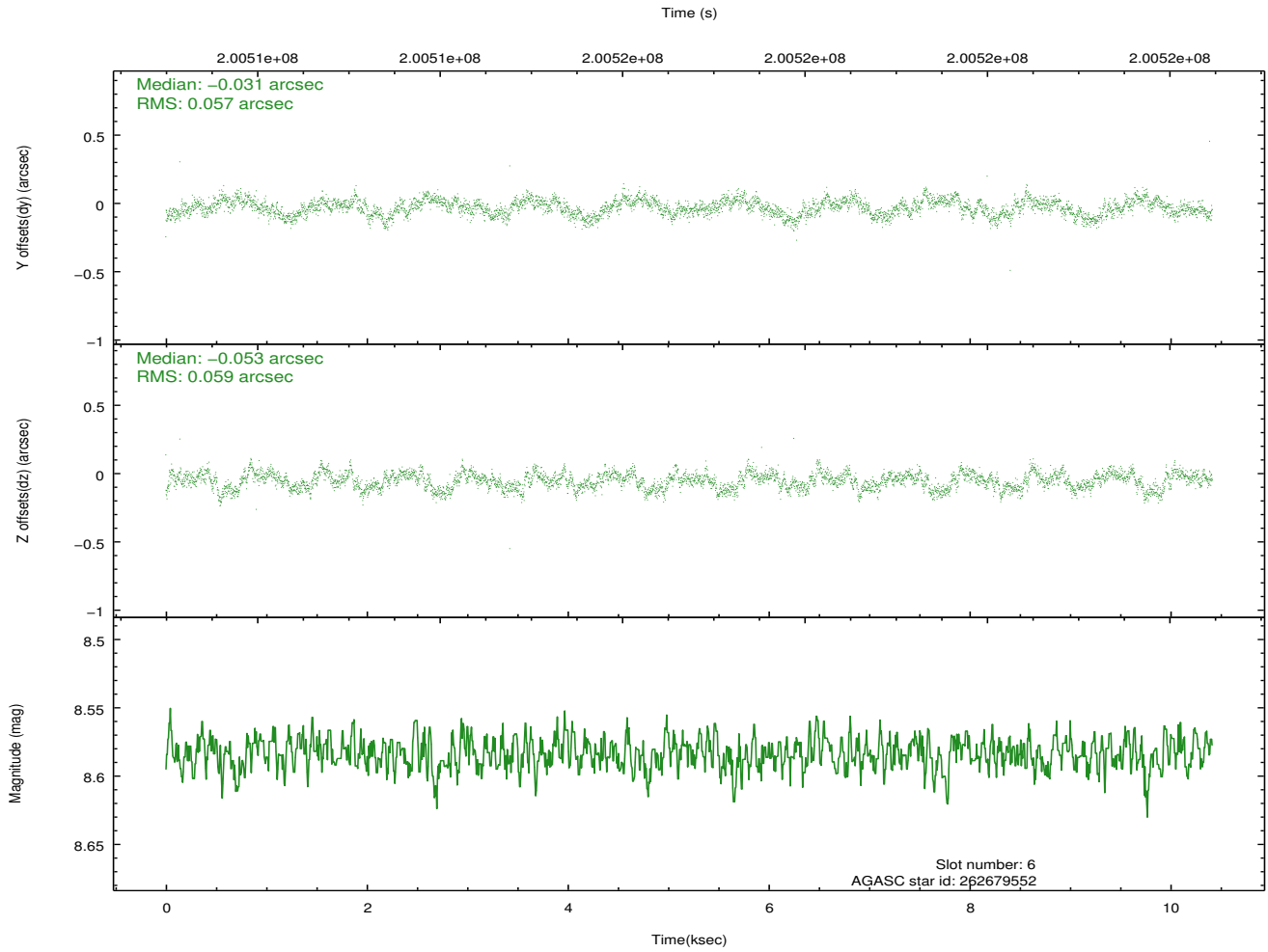
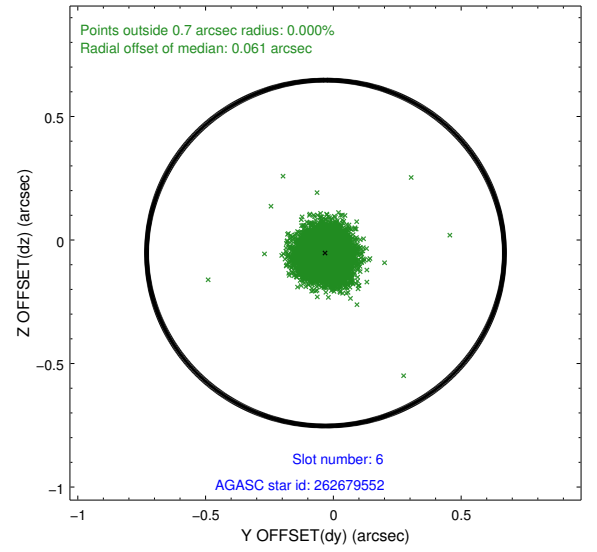
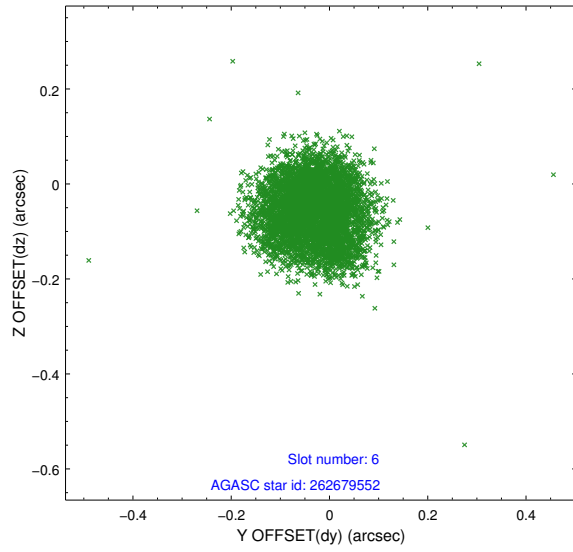
2.4.2 Slot 4



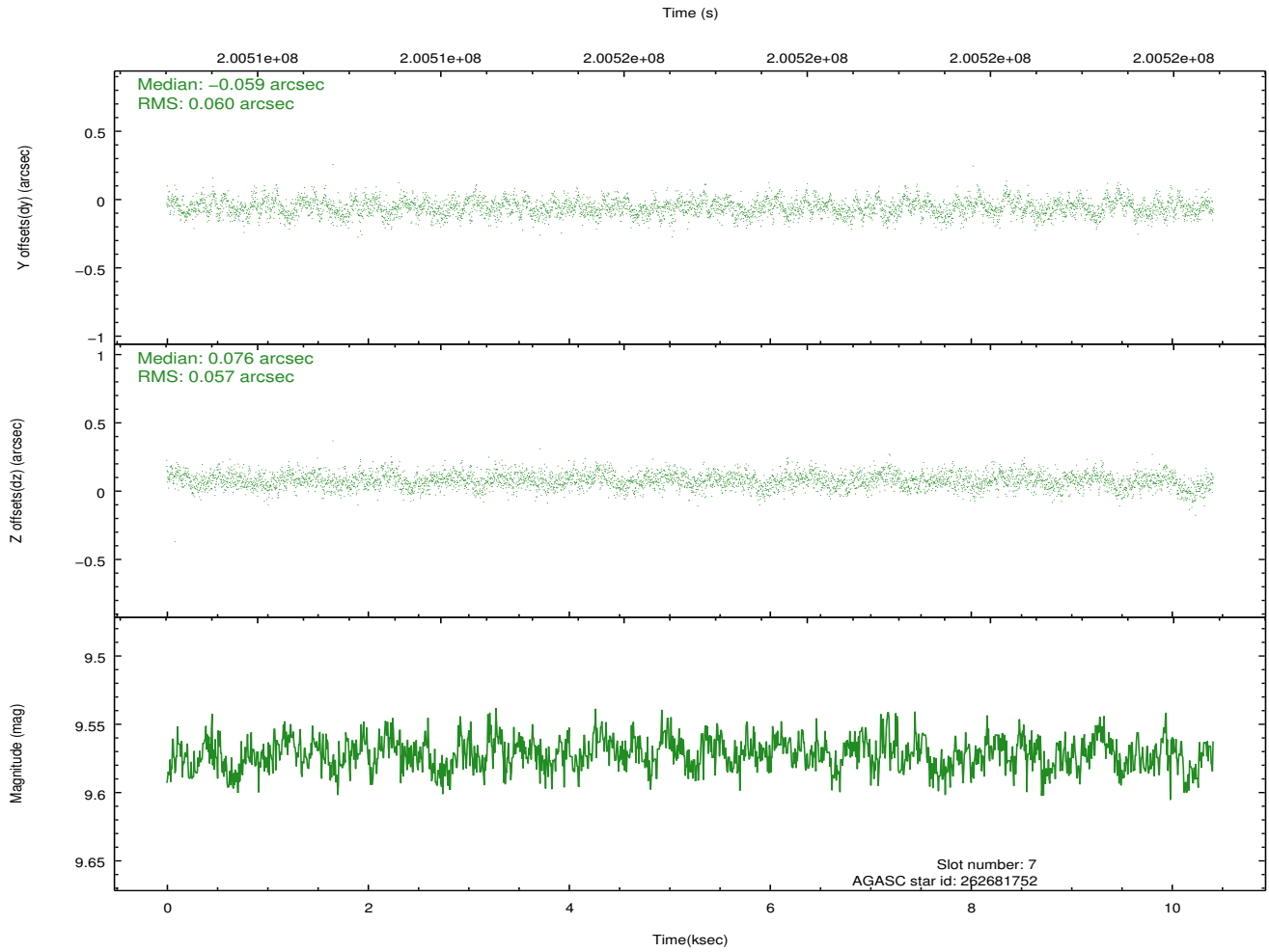
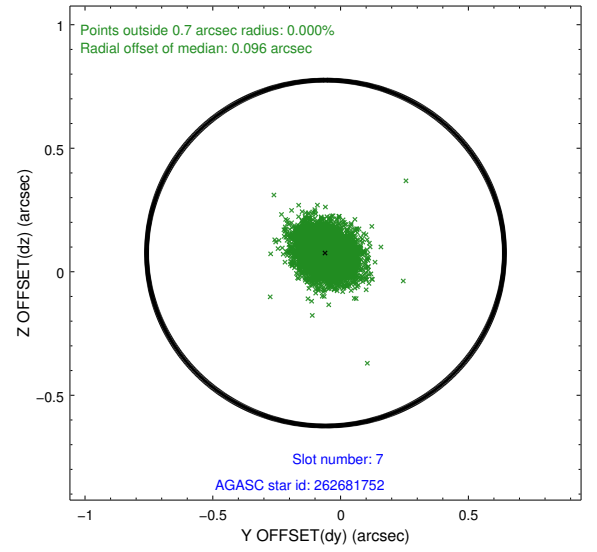
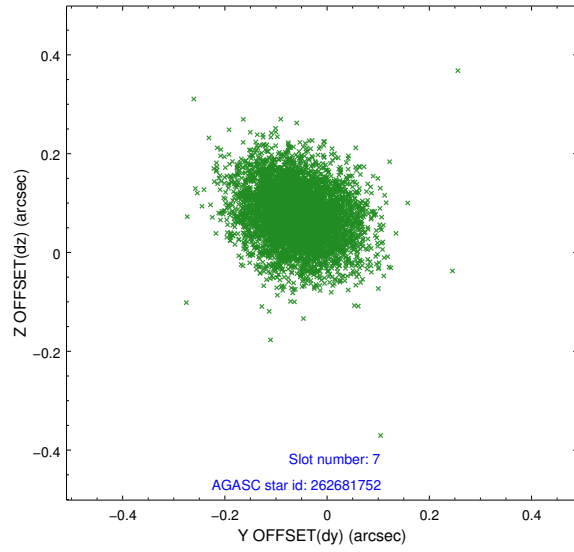
2.4.3 Slot 5



2.4.4 Slot 6

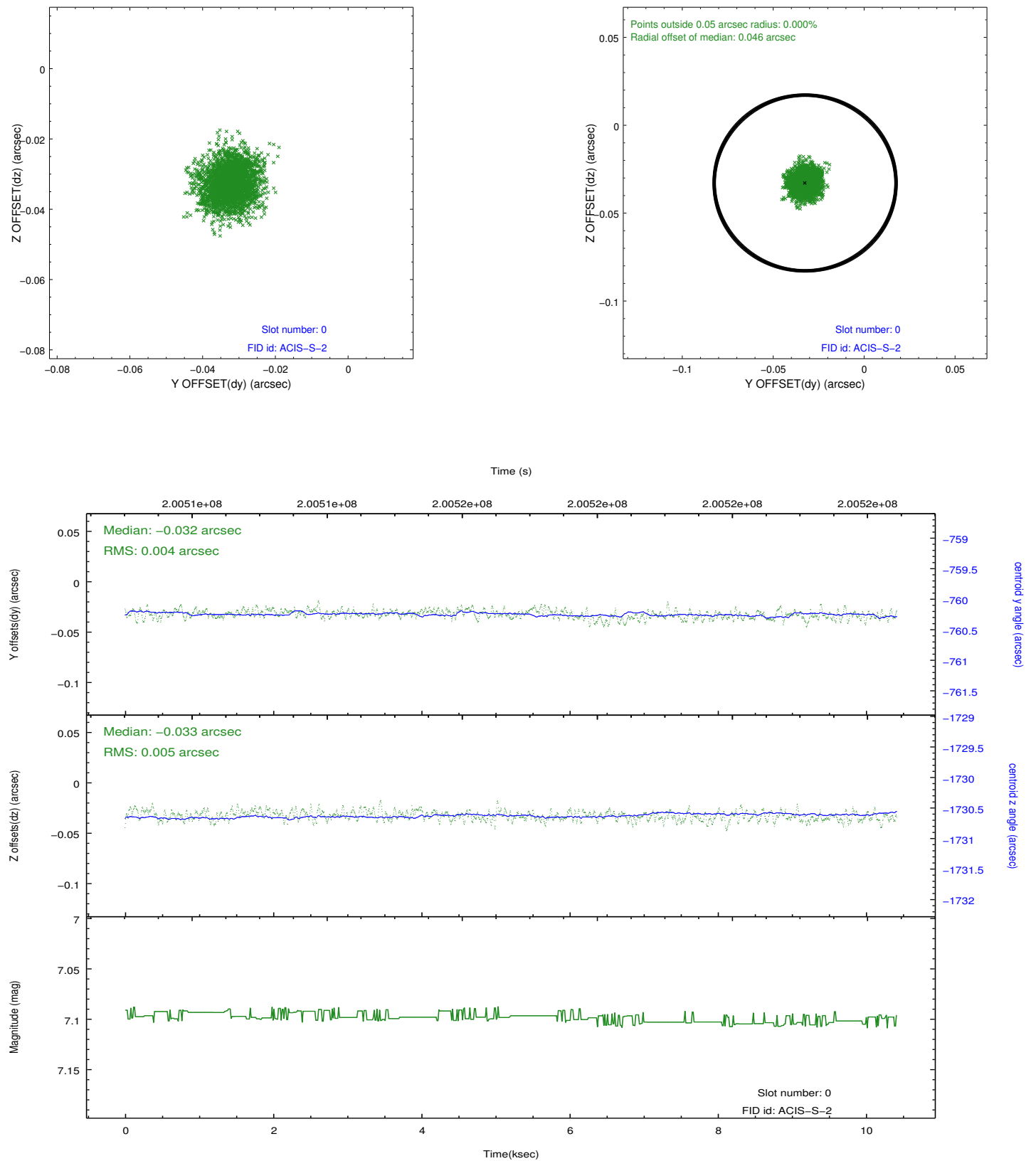


2.4.5 Slot 7

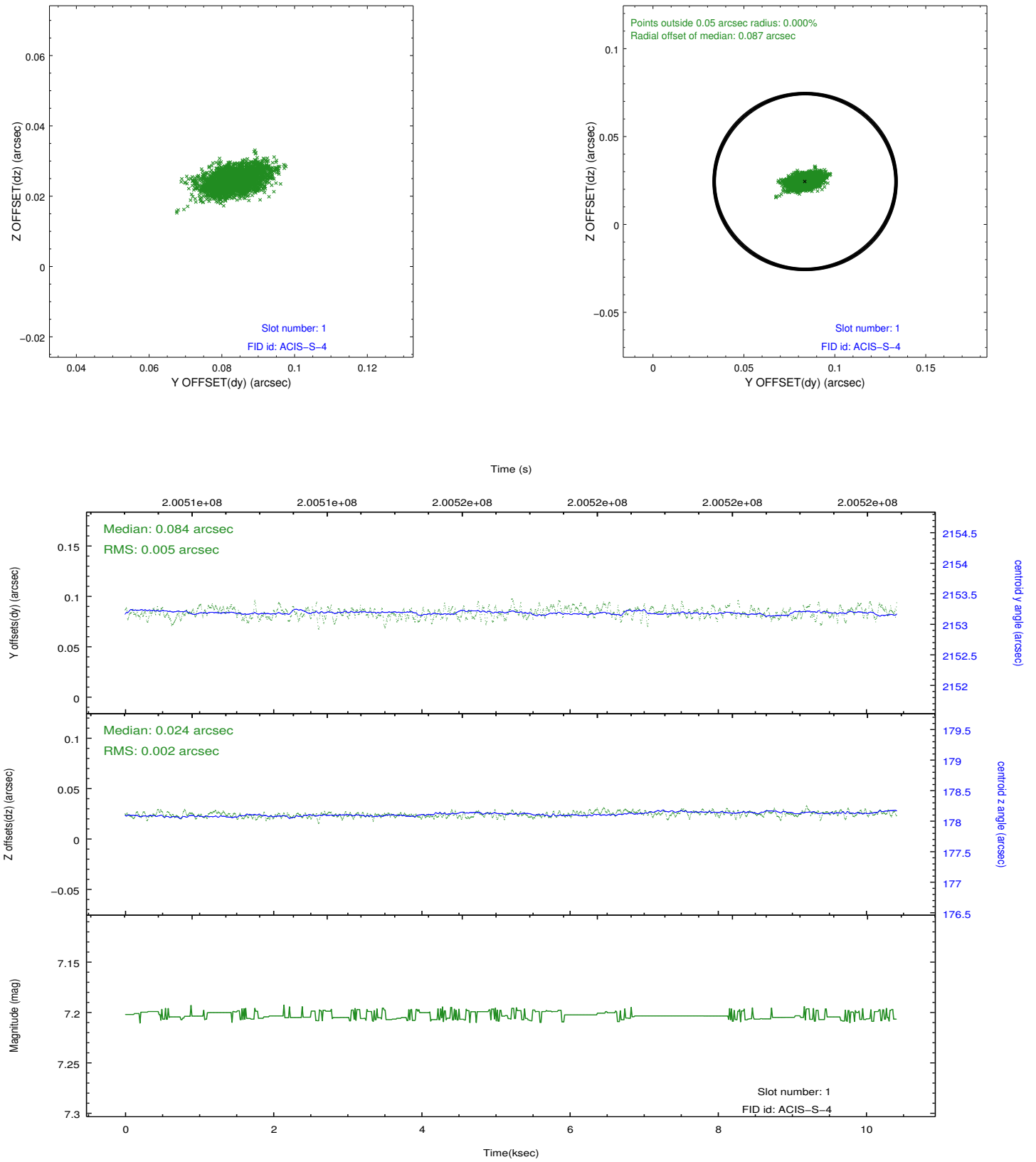


2.5 FID Slots

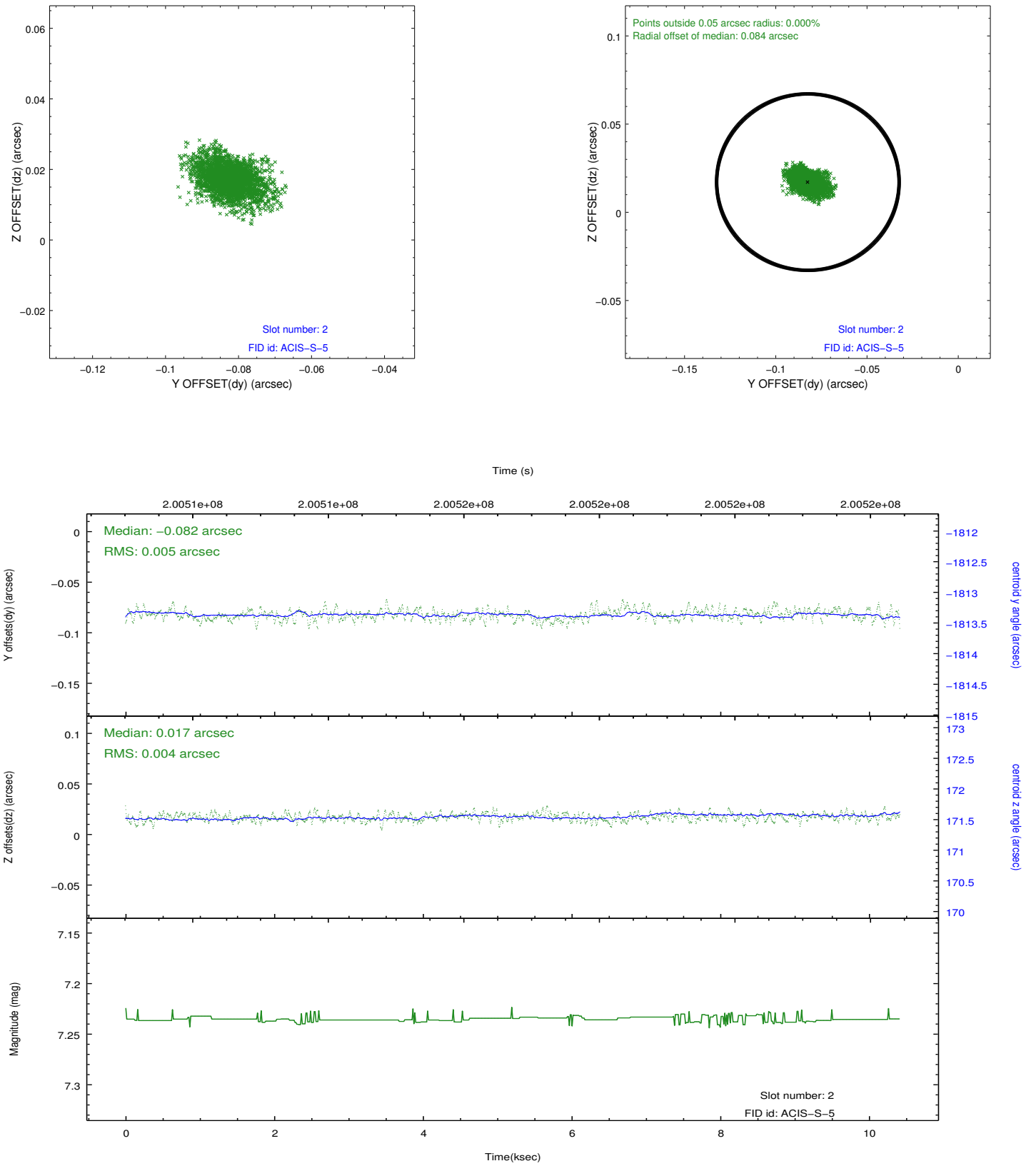
2.5.1 Slot 0



2.5.2 Slot 1



2.5.3 Slot 2



A Summary

A.1 Status

V&V Scientist	Beth Sundheim
V&V Date (YYYY-MM-DD)	2012.12.11
V&V Edition	1
V&V Disposition and Status	OK
V&V Charge Time	10.412

A.2 Comments

Joint proposal with HST.