

V&V Reference Report

L2 ASCDS Version : 7.6.7.1

Observation 4513 - L2 Version 001
Chandra X-Ray Center

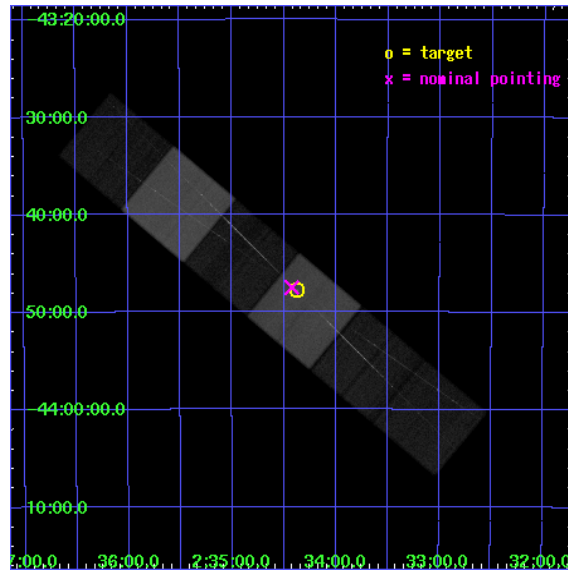
L2 Processing Date : Apr 17 2006

Contents

1	Front	2
2	OBI	3
2.1	OBI	3
2.1.1	Images	3
2.1.2	Bias	3
2.1.3	Parameters	4
2.1.4	Events	4
2.2	Compared Parameters	5
2.3	Aspect	6
2.4	Star Slots	9
2.4.1	Slot 3	9
2.4.2	Slot 4	10
2.4.3	Slot 5	11
2.4.4	Slot 6	12
2.4.5	Slot 7	13
2.5	FID Slots	14
2.5.1	Slot 0	14
2.5.2	Slot 1	15
2.5.3	Slot 2	16
3	Gratings	17
3.1	HEG Arm	17
3.2	MEG Arm	19
A	Summary	21
A.1	Status	21
A.2	Comments	21

1 Front

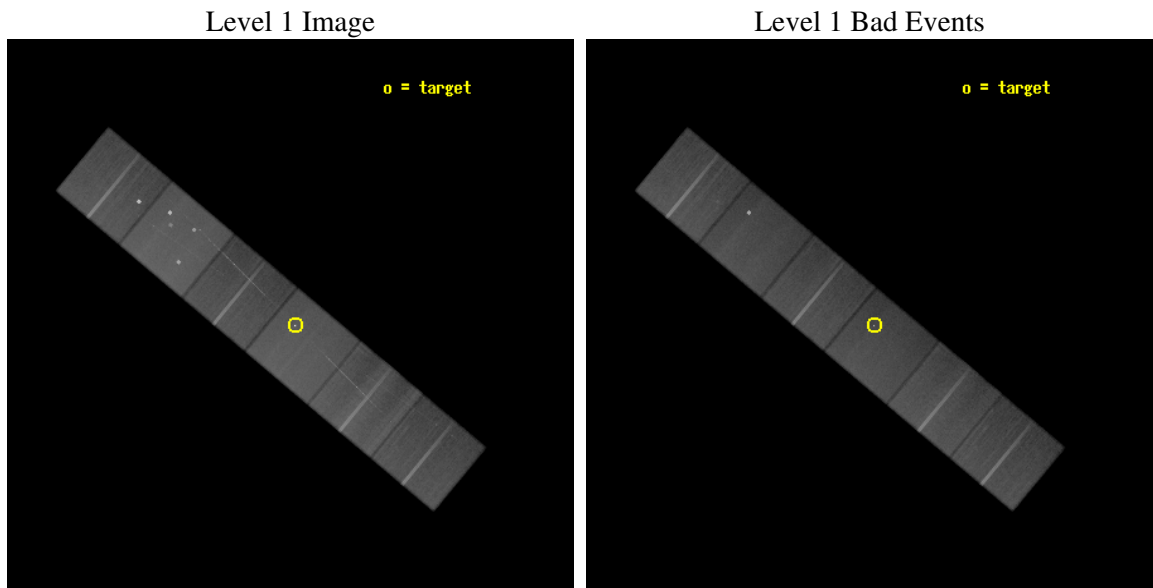
seq_num	200282
obs_id	4513
title	From Photosphere to Corona: Magnetic Fields and Coronal Emission from the Active Binary CC Eridani
observer	Dr. Rachel Osten
object	CC Eri
dtcycle	0
cycle	P
ra_targ	38.594167
dec_targ	-43.796361
ra_nom	38.605773380852
dec_nom	-43.791566338107
roll_nom	39.914657388263
revision	2
ontime	90601.599662483
livetime	89454.347653823
ontime4	90597.630185157
ontime5	90601.599662483
ontime6	90601.599662483
ontime7	90601.599662483
ontime8	90601.599662483
ontime9	90598.358682215
l2events	1111008



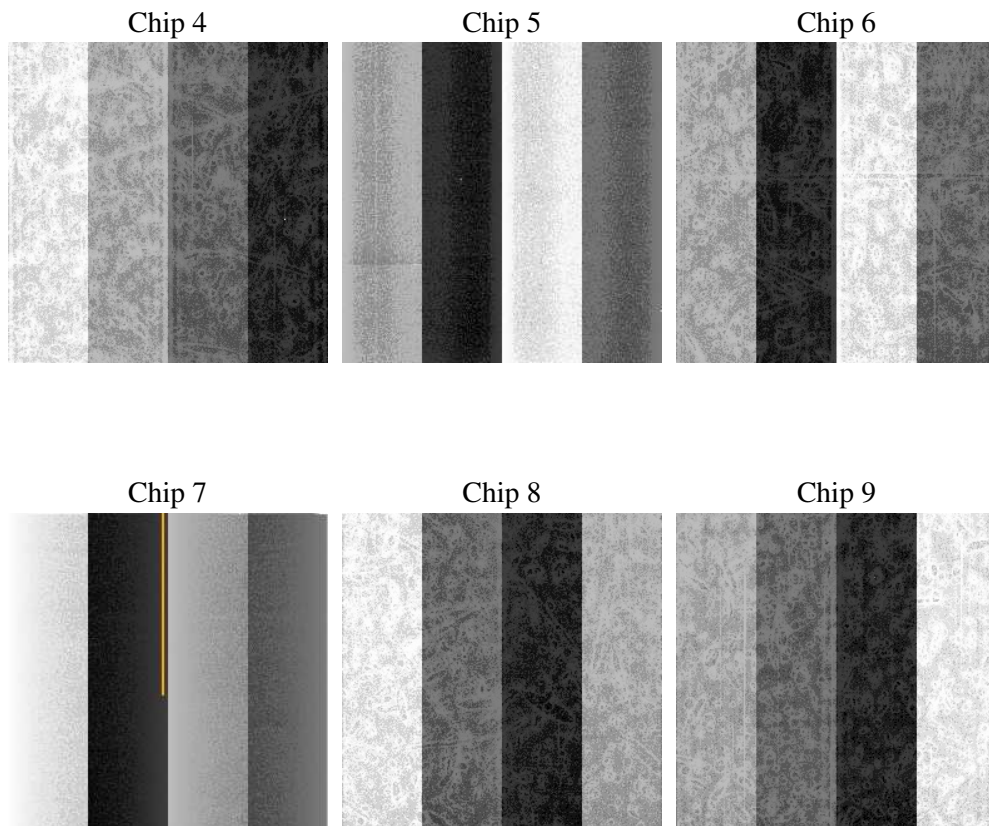
2 OBI

2.1 OBI

2.1.1 Images



2.1.2 Bias



2.1.3 Parameters

obi_num	0
ascdsver	7.6.7.1
caldsver	3.2.1
date	2006-04-16T23:02:27
revision	2

sched_exp_time	90646.442000
ontime	90605.716588169
ontime4	90599.234587789
ontime5	90605.716588169
ontime6	90605.716588169
ontime7	90605.716588169
ontime8	90605.716588169
ontime9	90602.475607902
l1events	5116308

2.1.4 Events

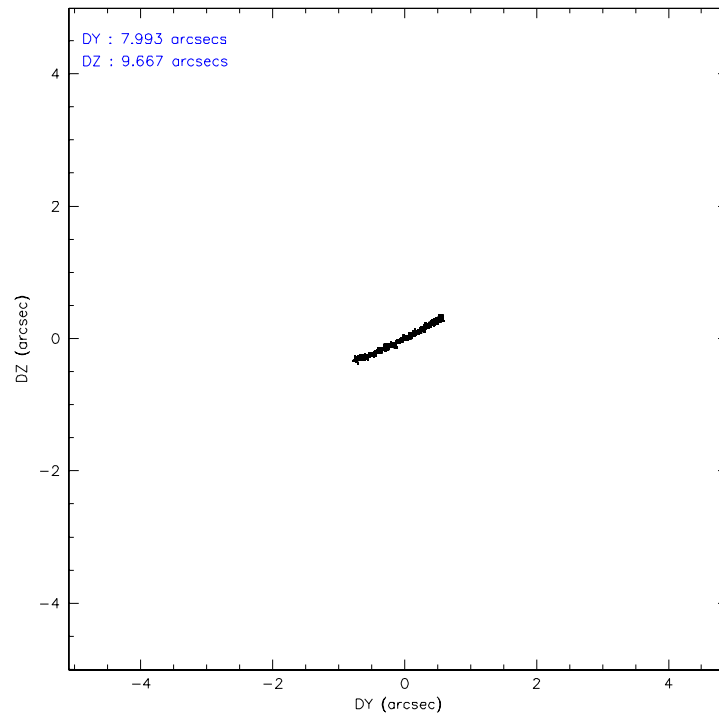
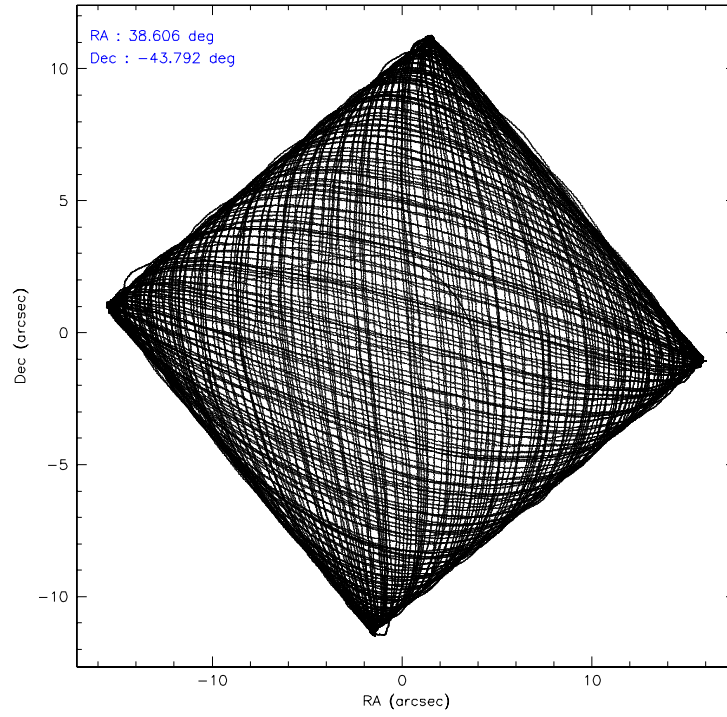
	ccd 4	ccd 5	ccd 6	ccd 7	ccd 8	ccd 9
level 1 events	801242	1059589	716864	953022	886641	698950
rejected events	688880	586730	625082	580003	693659	613496
rejected %	85%	55%	87%	60%	78%	87%

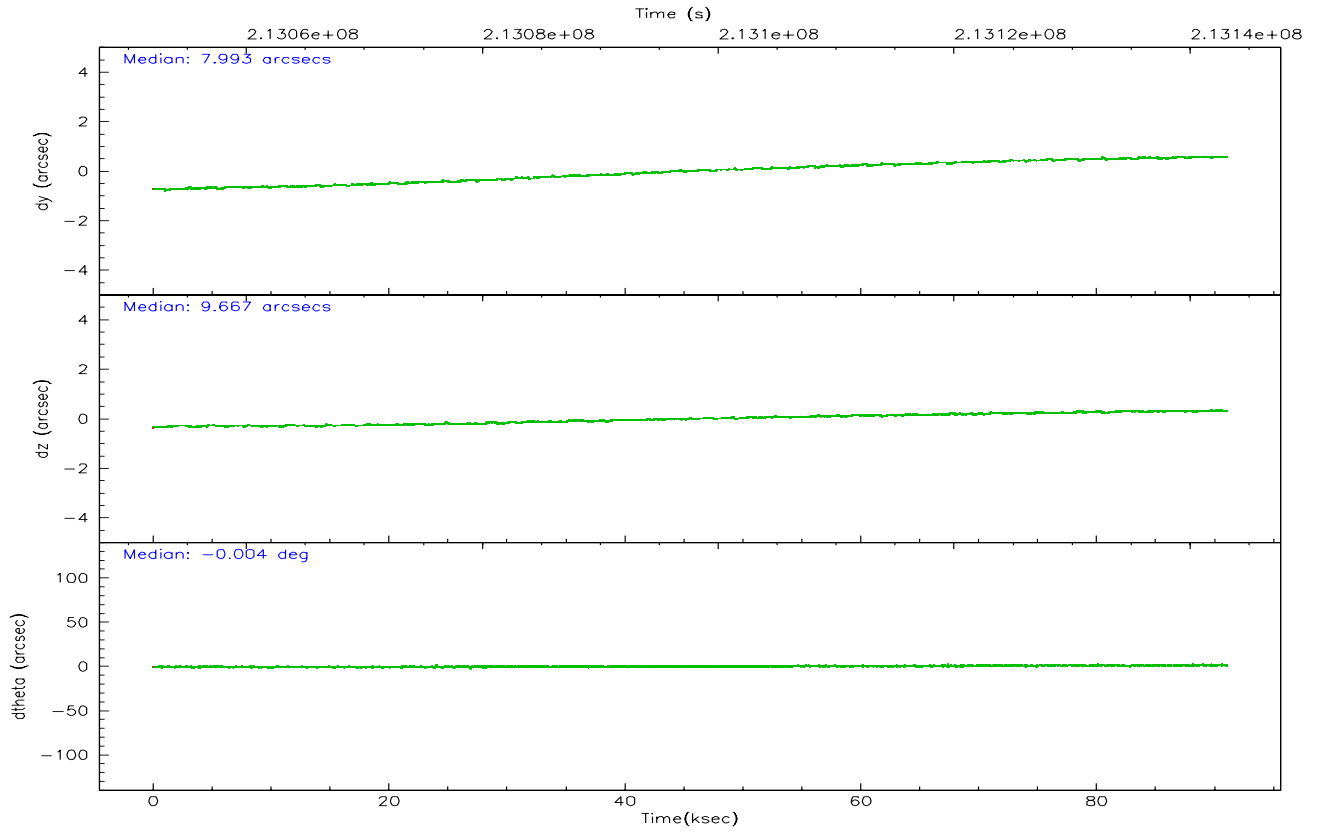
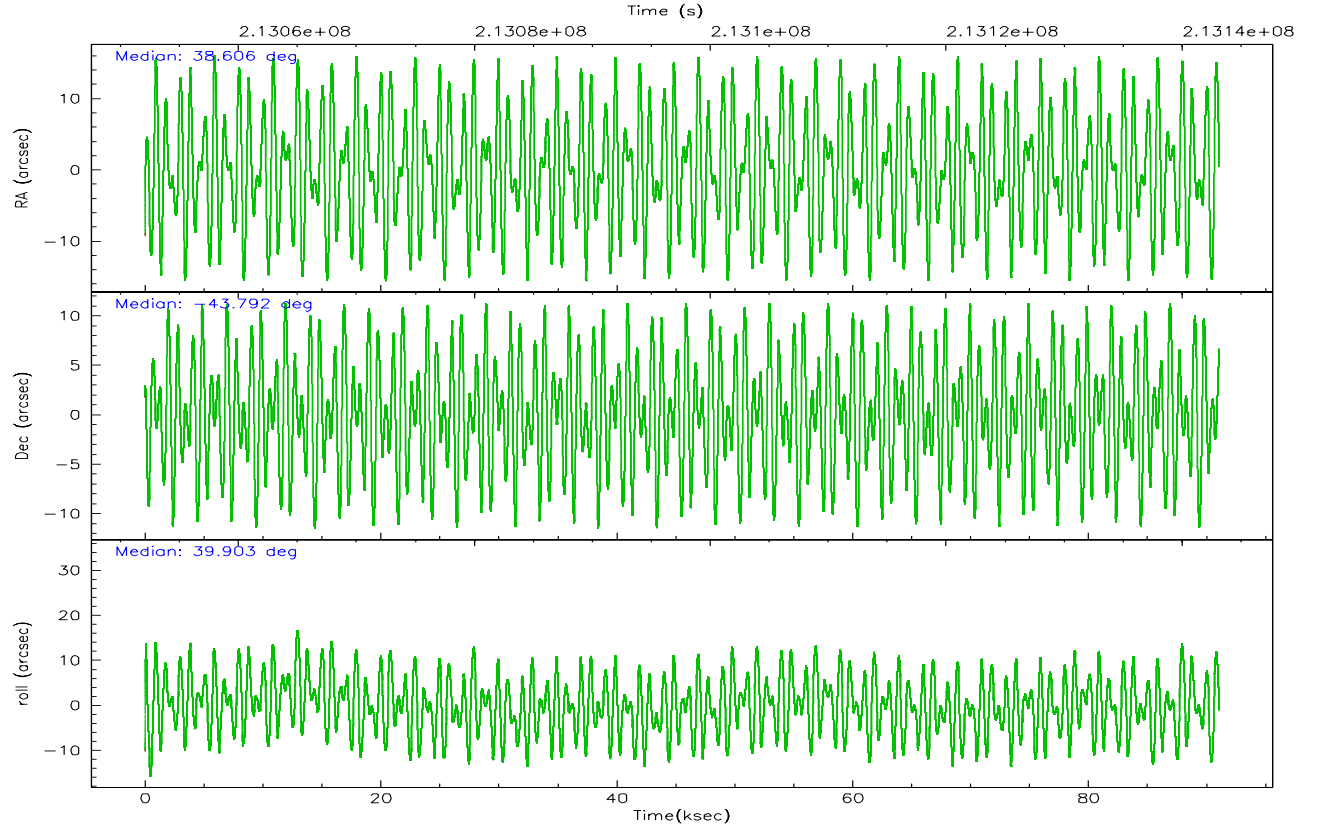
	ccd 4	ccd 5	ccd 6	ccd 7	ccd 8	ccd 9
grade 0 events	64328	50011	40880	24013	65795	35730
	8%	4%	5%	2%	7%	5%
grade 1 events	825	15349	391	923	625	393
	0%	1%	0%	0%	0%	0%
grade 2 events	17858	140552	18035	92583	41782	16678
	2%	13%	2%	9%	4%	2%
grade 3 events	8741	10509	8159	19986	19226	8649
	1%	0%	1%	2%	2%	1%
grade 4 events	8346	10745	8128	19134	18061	8221
	1%	1%	1%	2%	2%	1%
grade 5 events	30874	50054	31969	64315	41885	33858
	3%	4%	4%	6%	4%	4%
grade 6 events	13089	261070	16584	217316	48123	16179
	1%	24%	2%	22%	5%	2%
grade 7 events	657181	521299	592718	514752	651144	579242
	82%	49%	82%	54%	73%	82%

2.2 Compared Parameters

Parameter	Planned	Actual	Parameter	Planned	Actual
Instrument	ACIS	ACIS	Obspar format version number	6	6
Detector	ACIS-456789	ACIS-456789	Obspar file type	PREDICTED	ACTUAL
Grating	HETG	HETG	Obspar update status	NONE	UPDATED
Data mode	FAINT	FAINT	On-chip summing requested	N	N
Observation mode	POINTING	POINTING	Subarray requested	NONE	NONE
Pointing RA	38.593310	38.60577338085246	Alternating exposures requested	N	N
Pointing Dec	-43.817257	-43.79156633810675	Primary exposure time	0.000000	3.2
Pointing Roll	39.749404	39.91465738826315			
SIM focus pos (mm)	-0.684267	-0.6828225247311905			
SIM defocus (mm)	0	0.001444936568705701			
SIM translation stage pos (mm)	-187.132523	-187.1254020033014			
SIM translation stage offset (mm)	-3	-3.007120579706367			
Observation start time	213052510.184000	213051279.67115			
Observation start date	2004-10-01T21:14:06	2004-10-01T20:54:39			
Observation end time	213143157.184000	213143374.90026			
Observation end date	2004-10-02T22:24:53	2004-10-02T22:29:34			
Read mode	TIMED	TIMED			

2.3 Aspect



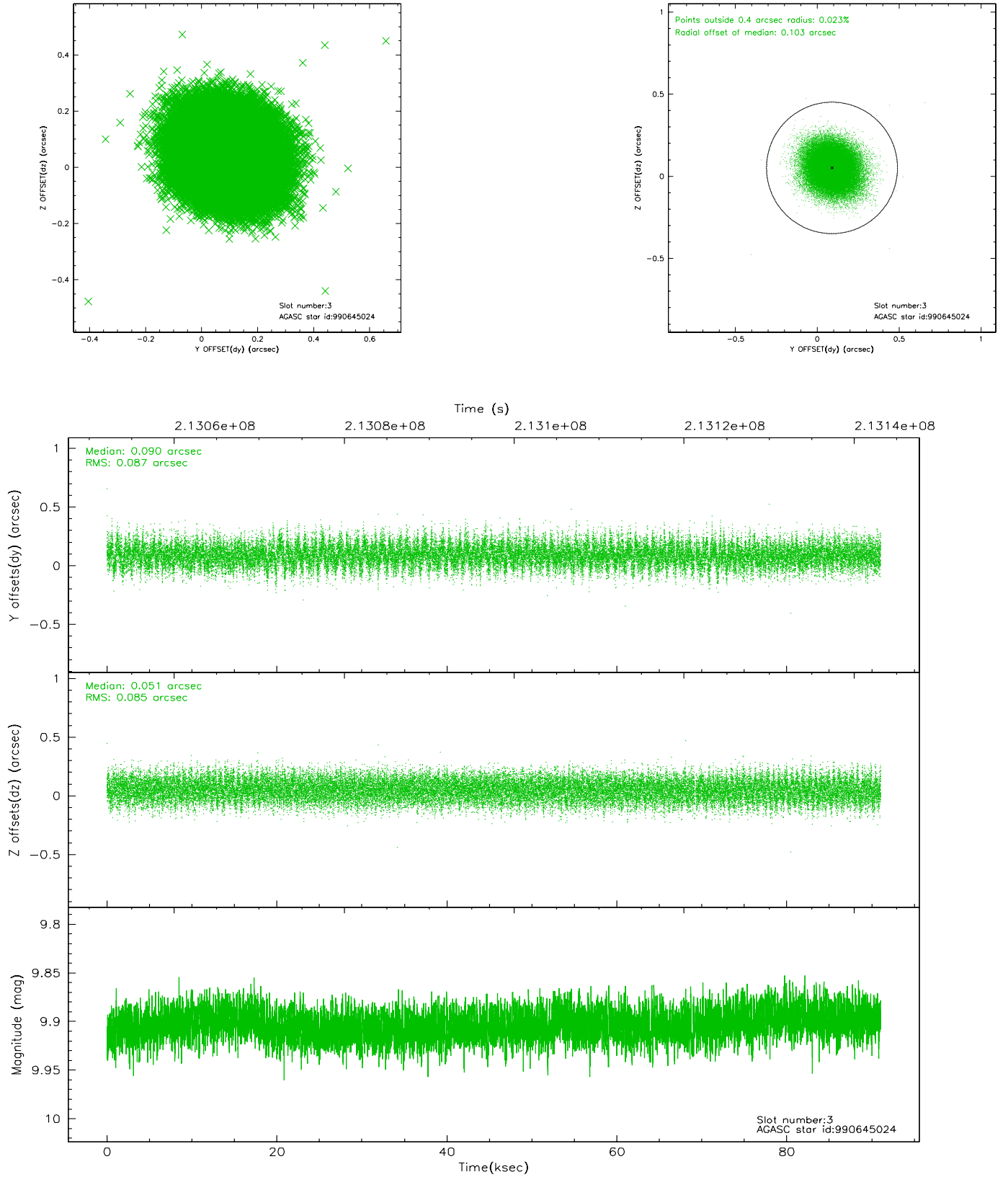


Slot Statistics

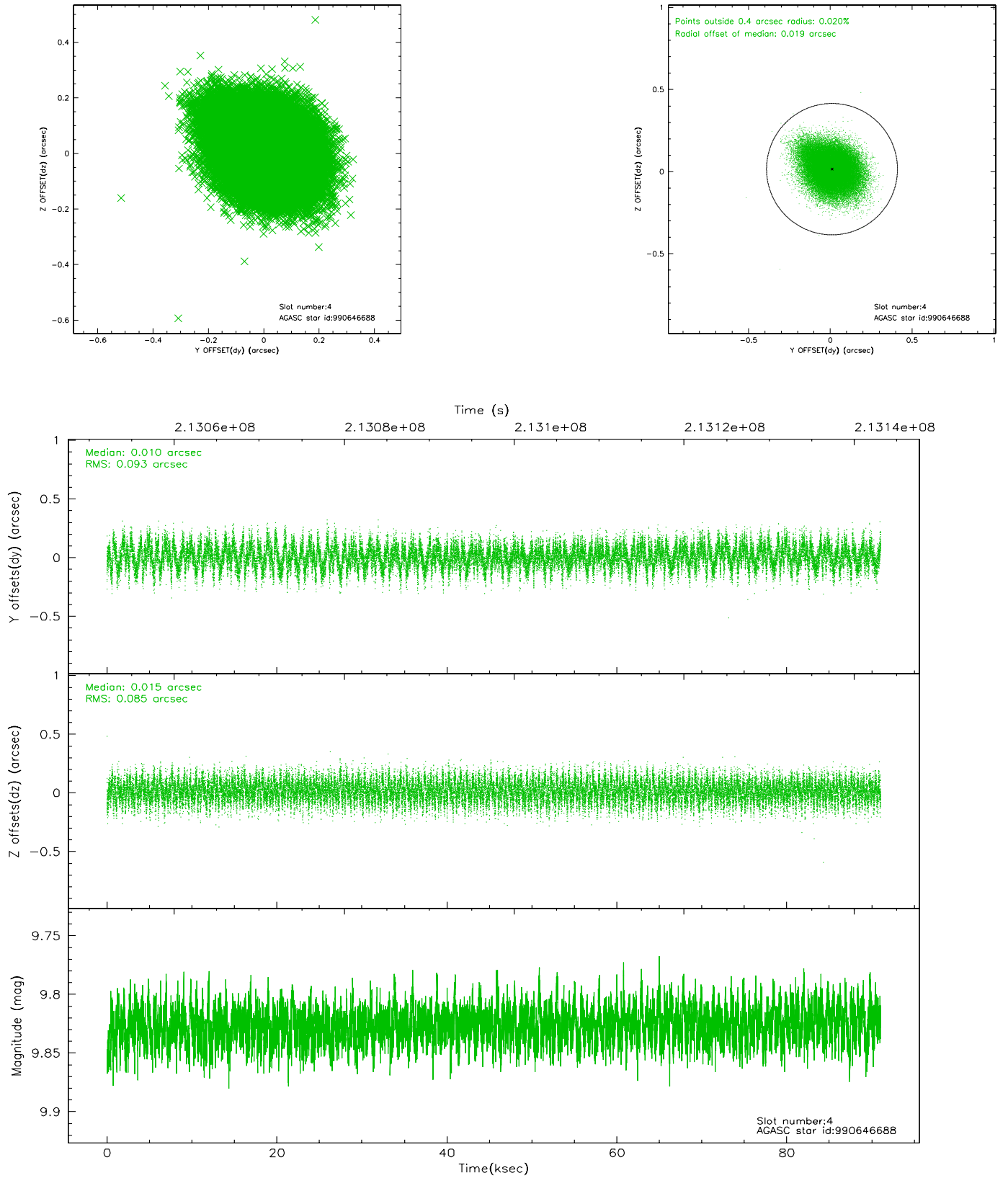
slot	status	id	mag	n_pts	med_dy	med_dz	dr1	dr2	ra	dec	mean_y	mean_z
0	FID	ACIS-S-2	7.10	22212	-0.039	-0.044	0.013	0.019	0.000000	0.000000	-760.57	-1793.02
1	FID	ACIS-S-4	7.19	22216	0.066	0.031	0.010	0.016	0.000000	0.000000	2152.86	115.60
2	FID	ACIS-S-5	7.23	22214	-0.061	0.023	0.018	0.030	0.000000	0.000000	-1813.53	109.18
3	GUIDE	990645024	9.90	44281	0.090	0.051	0.130	0.208	39.438677	-43.570616	2256.47	-735.46
4	GUIDE	990646688	9.83	44371	0.010	0.015	0.135	0.216	39.195111	-43.949146	892.67	-1366.85
5	GUIDE	990646896	9.06	44403	-0.062	-0.129	0.084	0.138	39.157415	-43.282359	2364.93	531.51
6	GUIDE	990647840	9.66	44389	-0.035	0.001	0.114	0.189	39.476651	-43.890480	1586.15	-1677.39
7	GUIDE	990648904	9.32	44396	0.006	0.069	0.102	0.170	39.426522	-43.673133	1994.32	-996.95

2.4 Star Slots

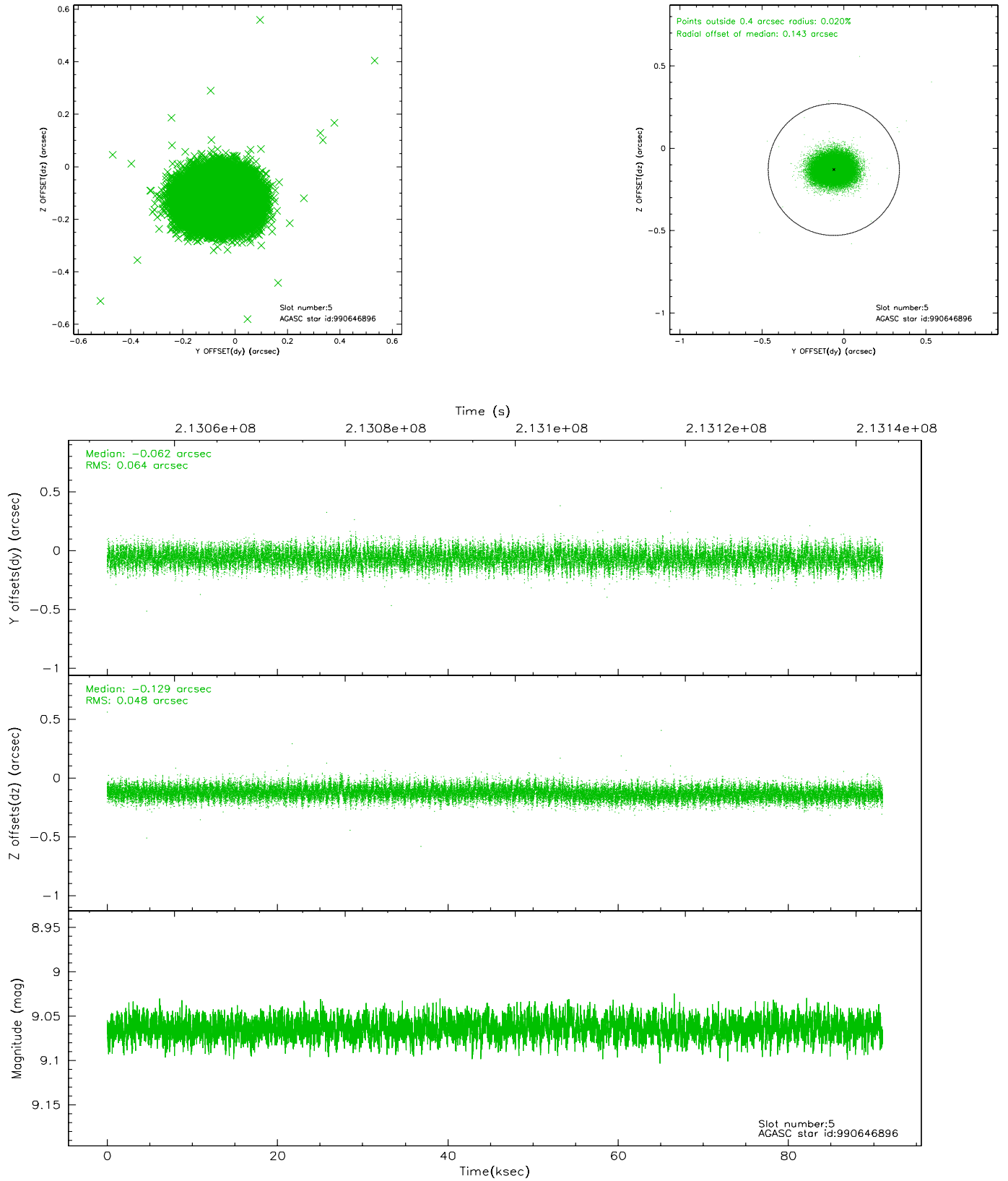
2.4.1 Slot 3



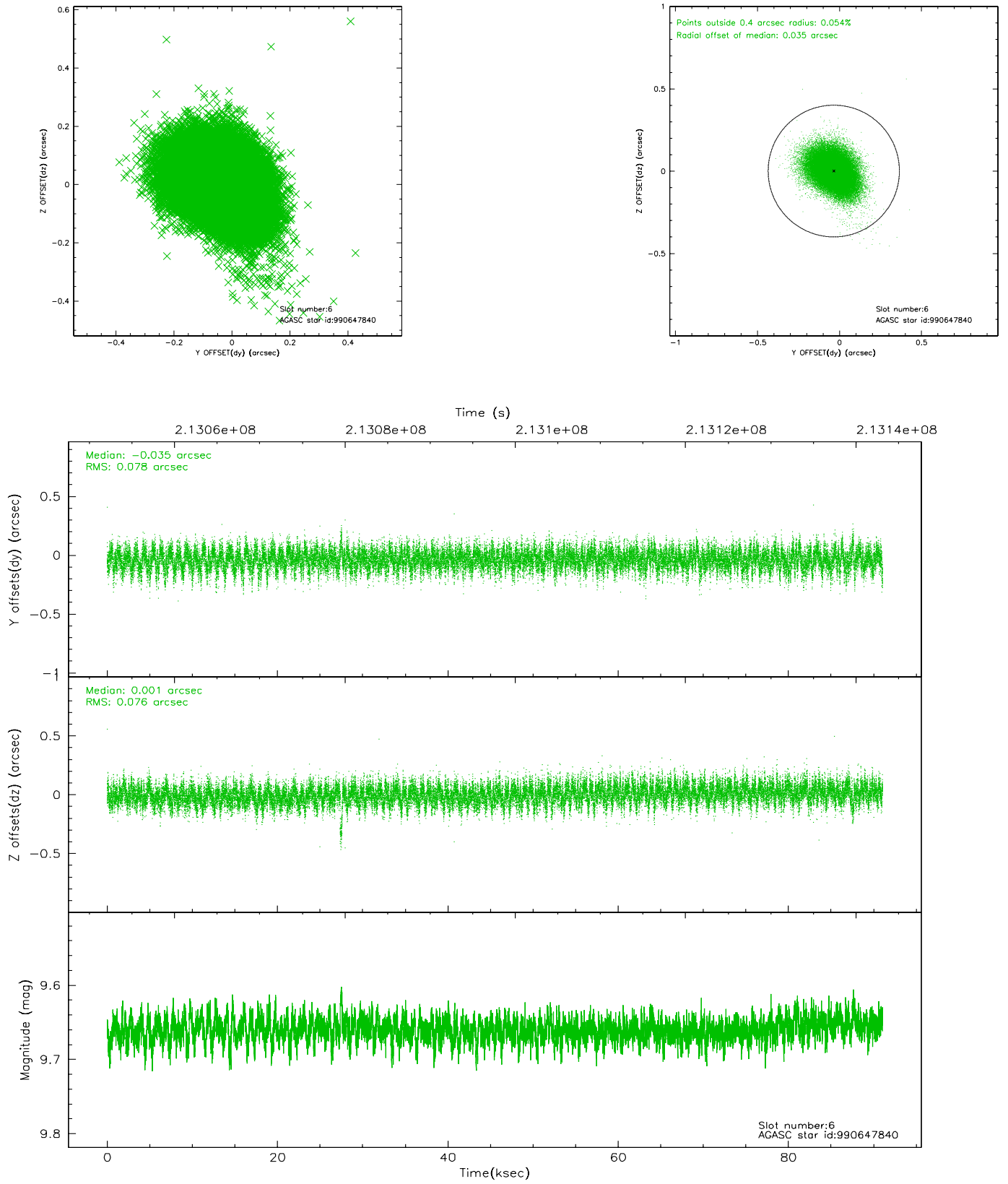
2.4.2 Slot 4



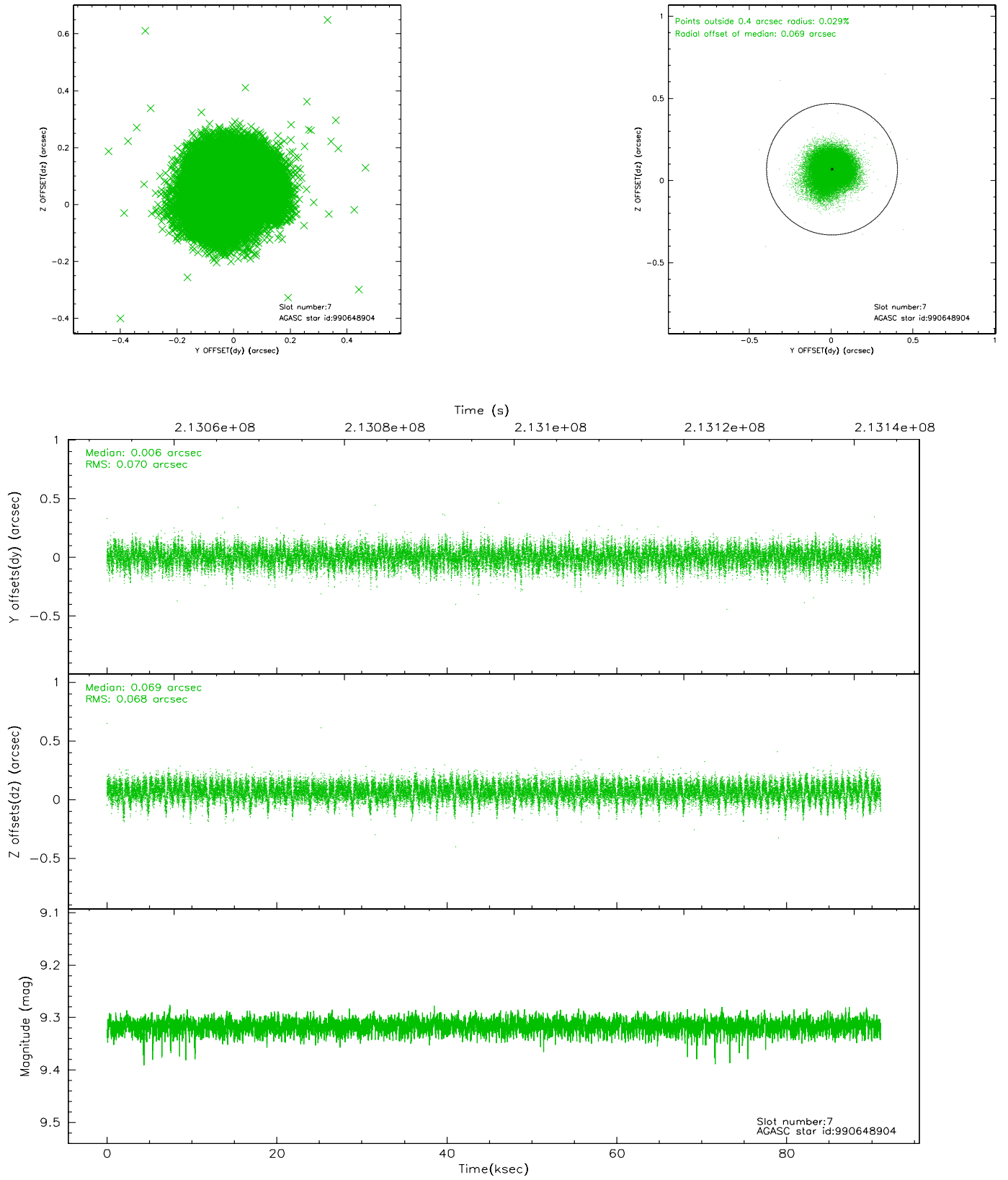
2.4.3 Slot 5



2.4.4 Slot 6

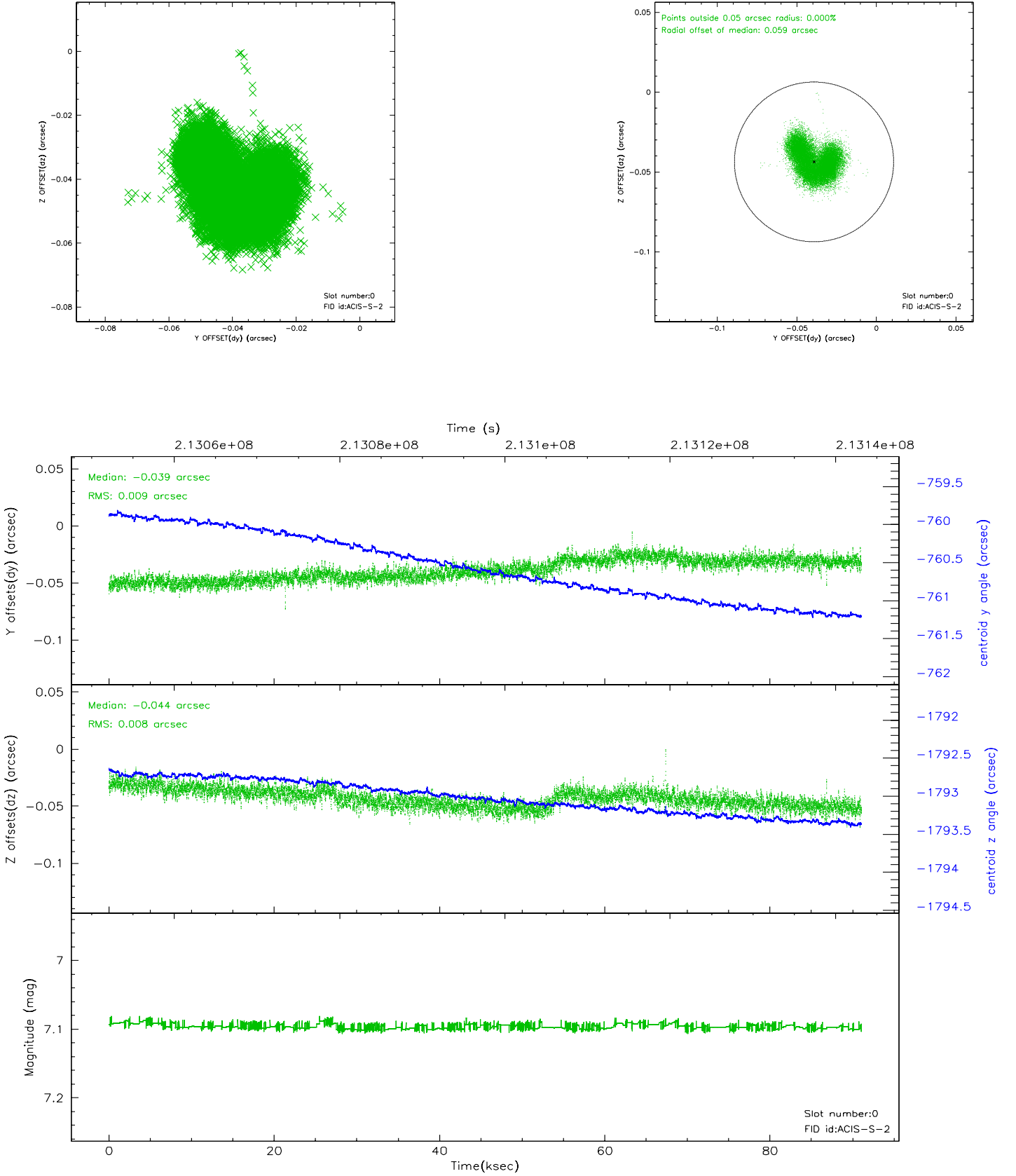


2.4.5 Slot 7

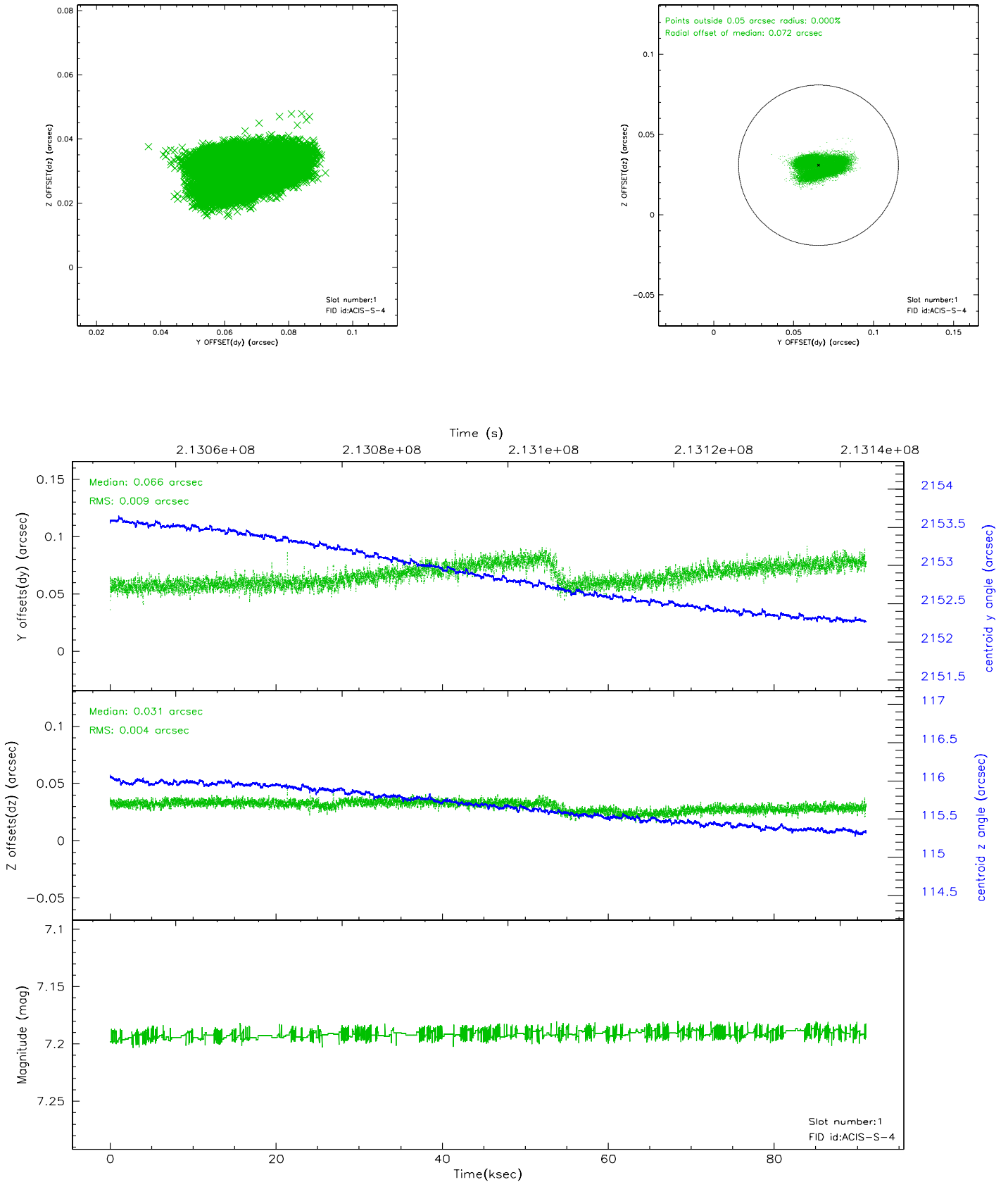


2.5 FID Slots

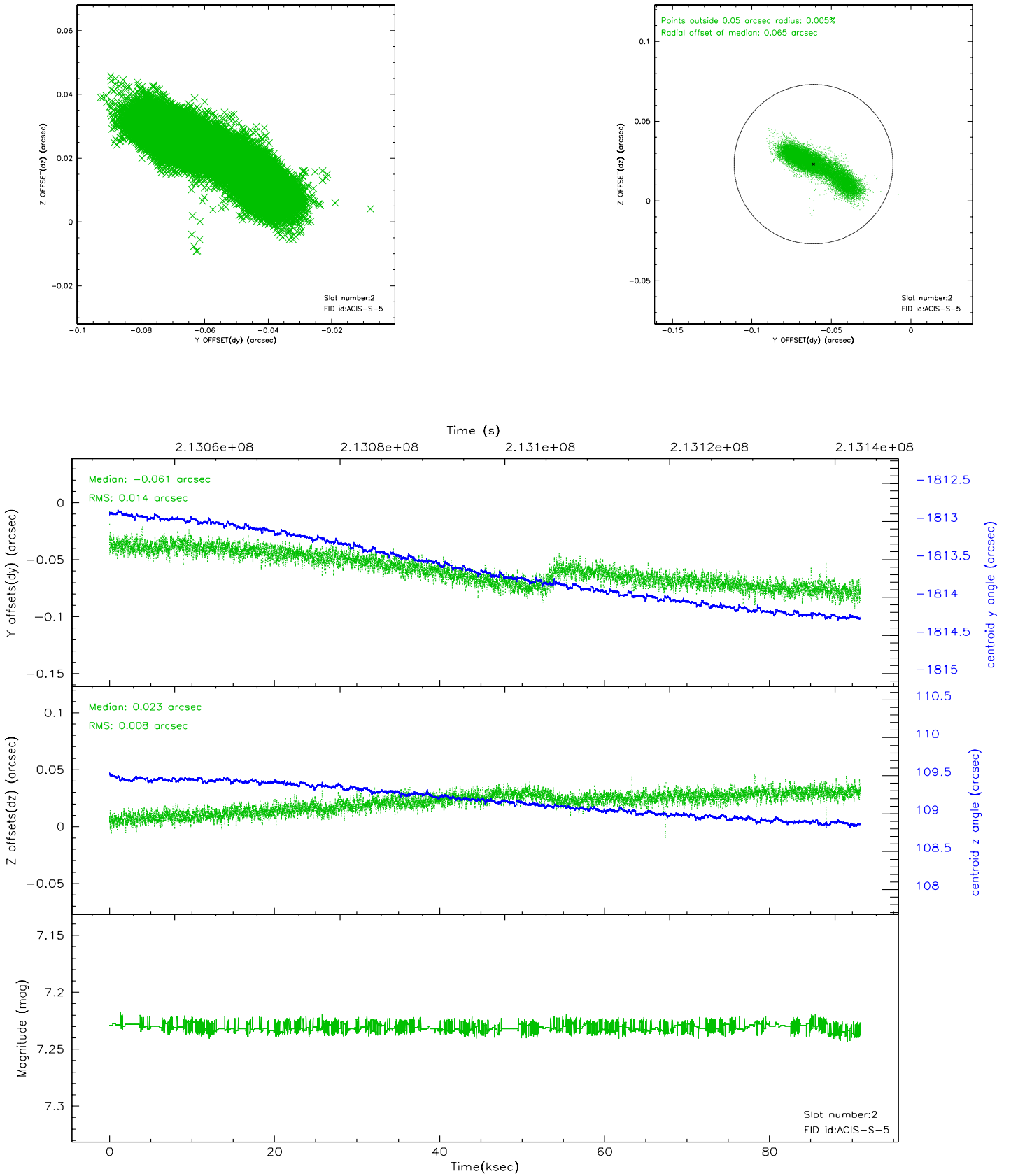
2.5.1 Slot 0



2.5.2 Slot 1

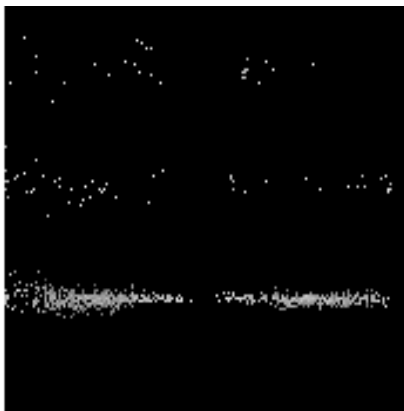


2.5.3 Slot 2

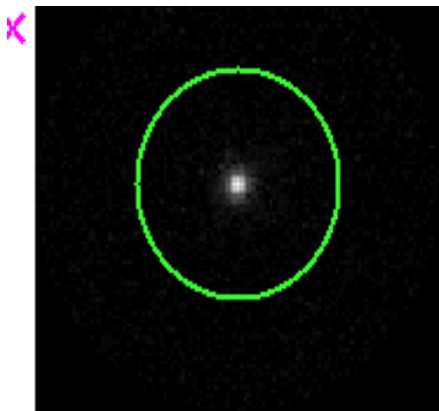


3 Gratings

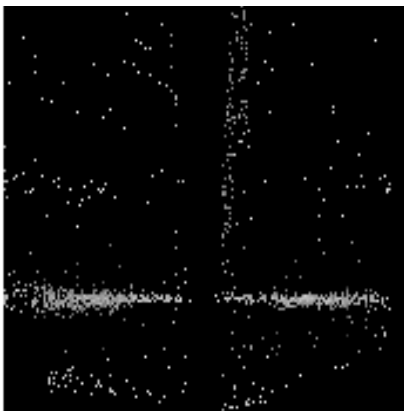
3.1 HEG Arm



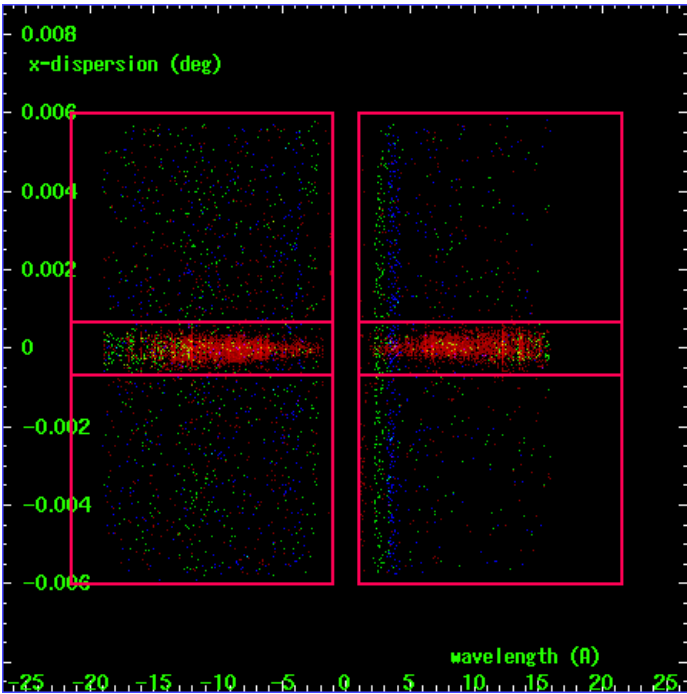
HEG Order Sort 123



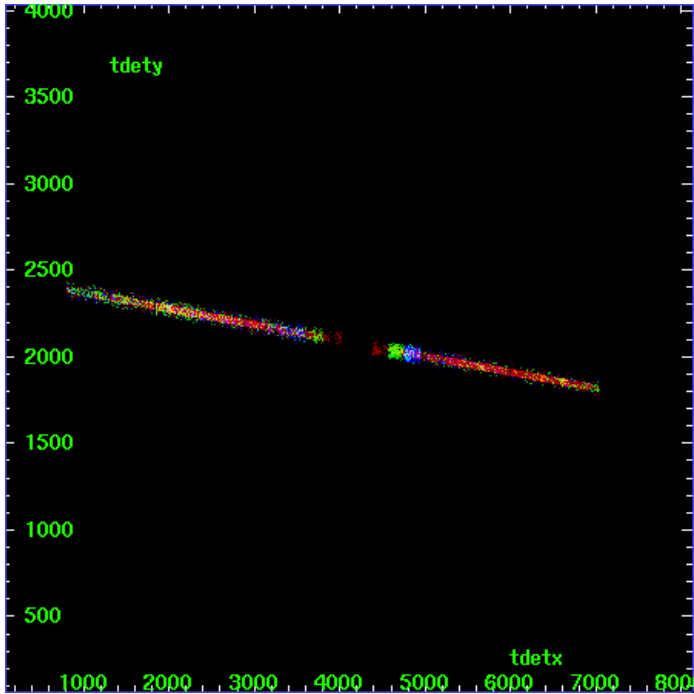
HEG Zero Order



HEG Order Sort ALL

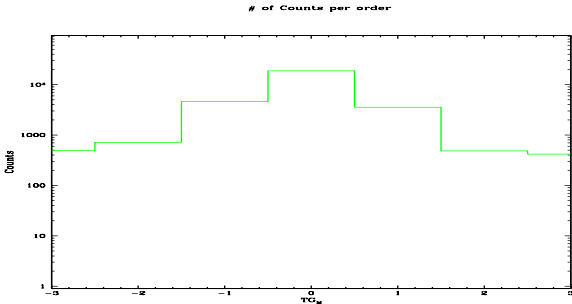


Spot Image HEG

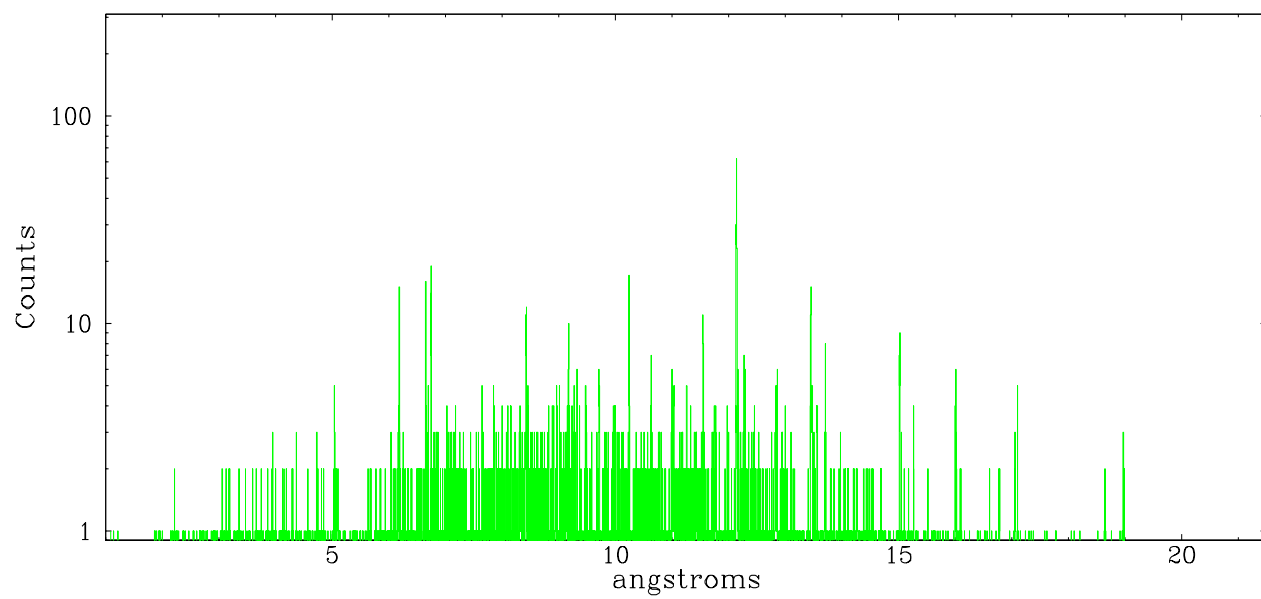


Full Detector HEG

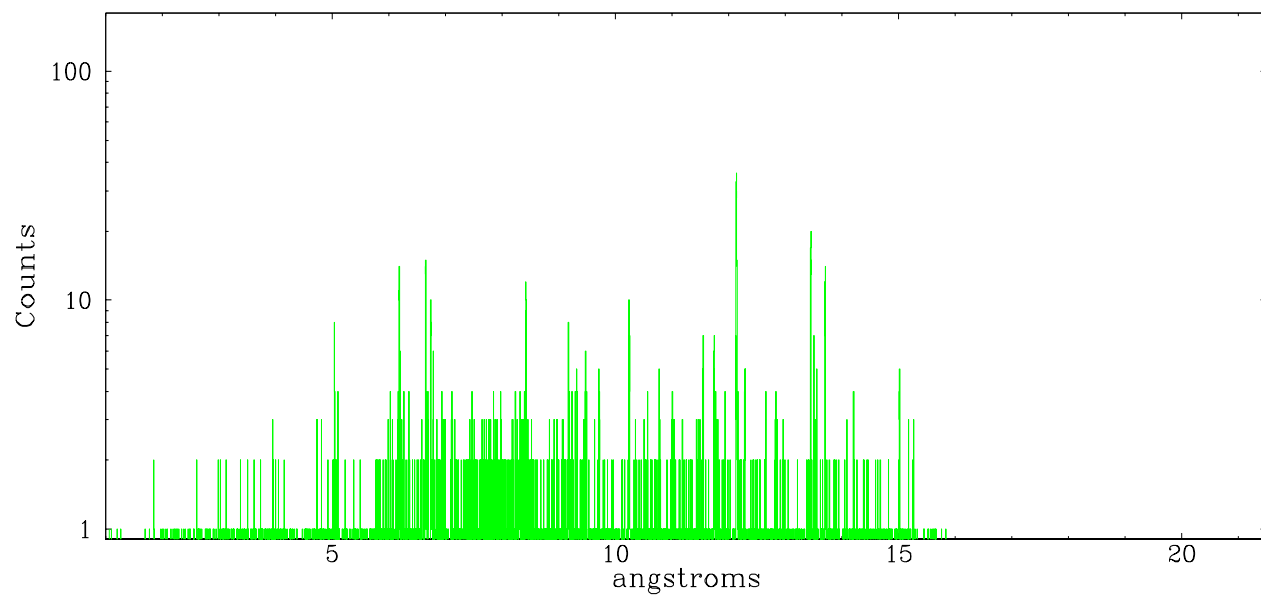
	order -3	order -2	order -1	order 0	order 1	order 2	order 3
Events	491	717	4579	18686	3542	482	417



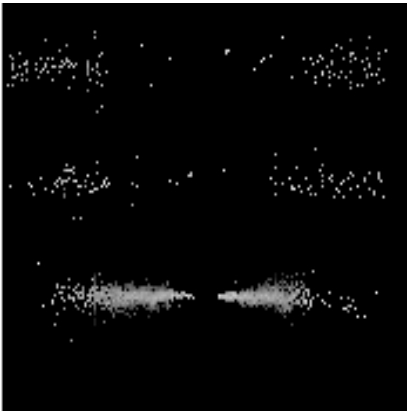
heg order -1



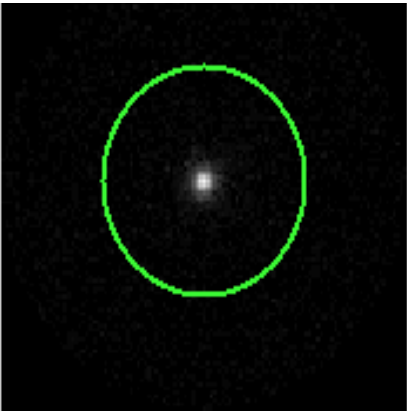
heg order +1



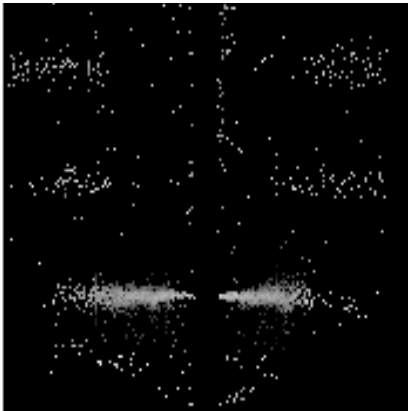
3.2 MEG Arm



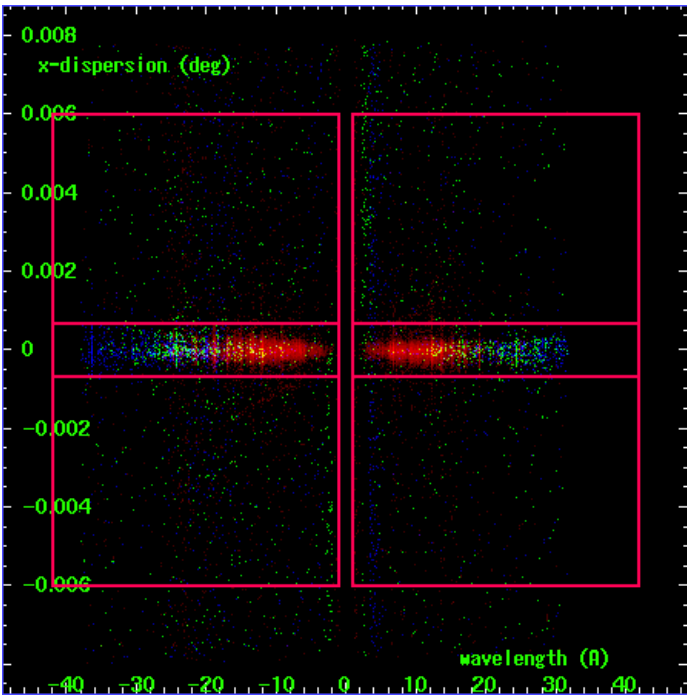
MEG Order Sort 123



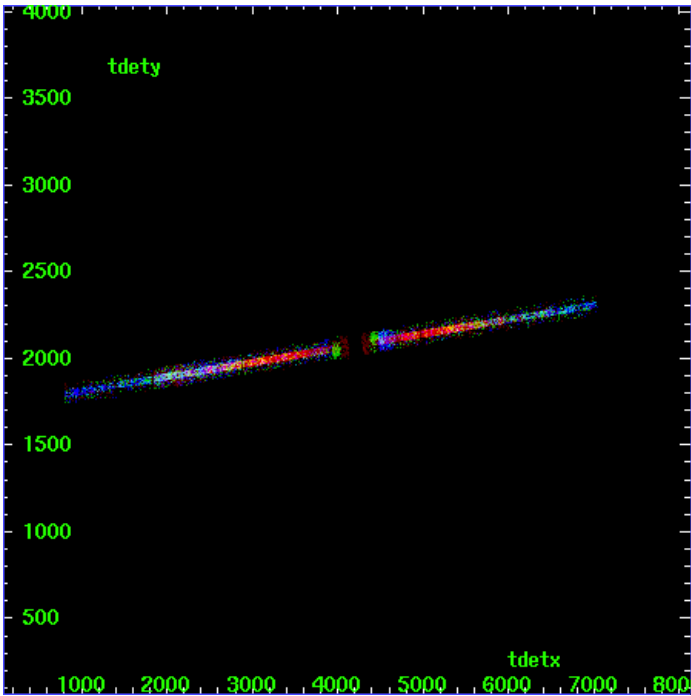
MEG Zero Order



MEG Order Sort ALL

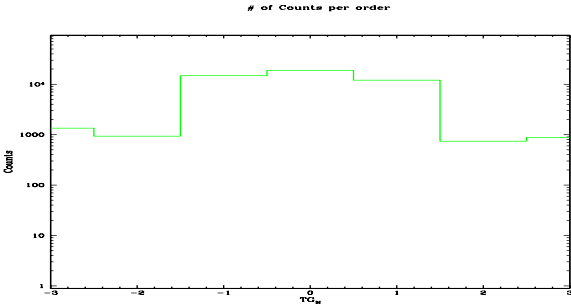


Spot Image MEG

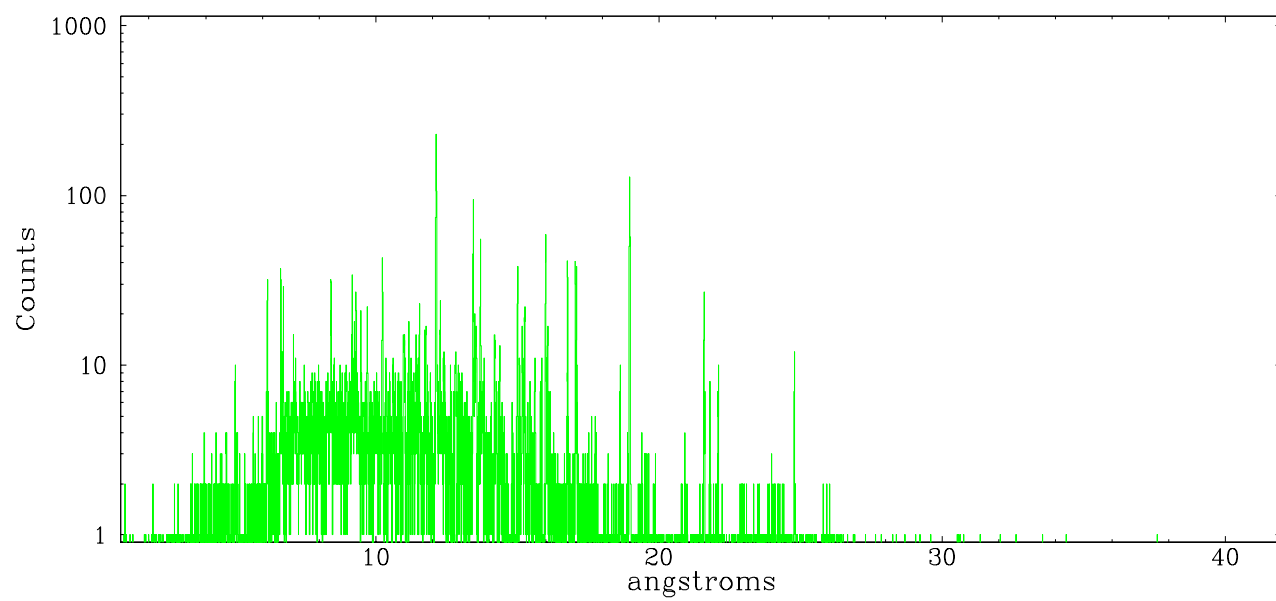


Full Detector MEG

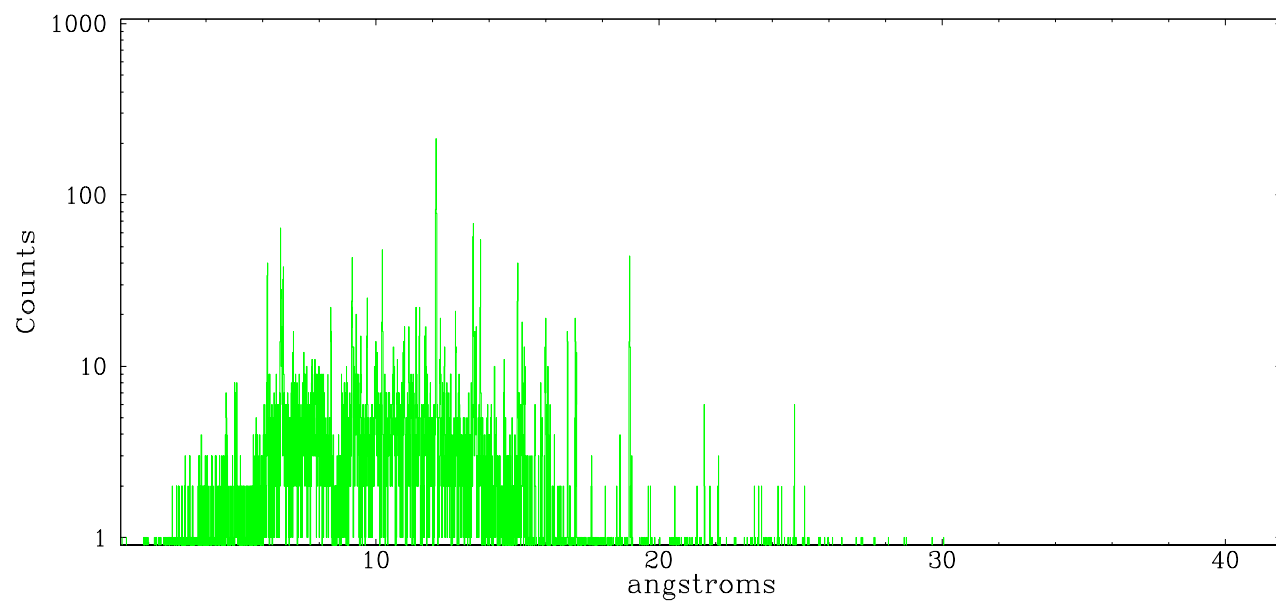
	order -3	order -2	order -1	order 0	order 1	order 2	order 3
Events	1345	933	14739	18686	11984	739	878



meg order -1



meg order +1



A Summary

A.1 Status

V&V Scientist	Beth Sundheim
V&V Date (YYYY-MM-DD)	2006.04.17
V&V Edition	1
V&V Disposition and Status	OK
V&V Charge Time	90.601

A.2 Comments