

V&V Reference Report

L2 ASCDS Version : 8.4.5

Observation 443 - L2 Version 6
Chandra X-Ray Center

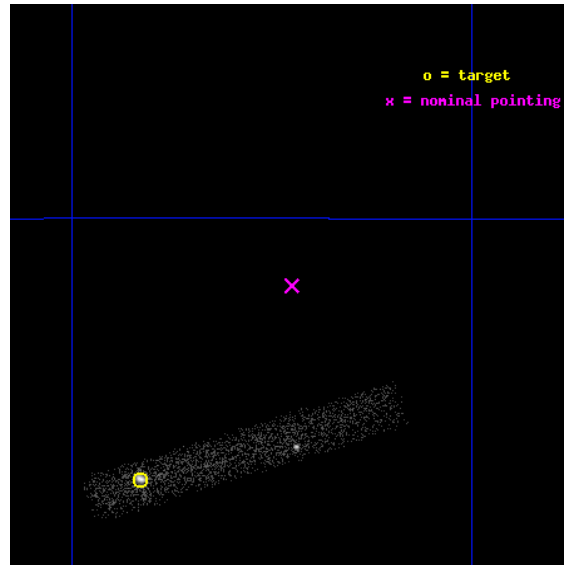
L2 Processing Date : Oct 25 2012

Contents

1	Front	2
2	OBI	3
2.1	OBI	3
2.1.1	Images	3
2.1.2	Bias	3
2.1.3	Parameters	4
2.1.4	Events	4
2.2	Compared Parameters	5
2.3	Aspect	6
2.4	Star Slots	9
2.4.1	Slot 3	9
2.4.2	Slot 4	10
2.4.3	Slot 6	11
2.4.4	Slot 7	12
2.5	FID Slots	13
2.5.1	Slot 0	13
2.5.2	Slot 1	14
2.5.3	Slot 2	15
A	Summary	16
A.1	Status	16
A.2	Comments	16

1 Front

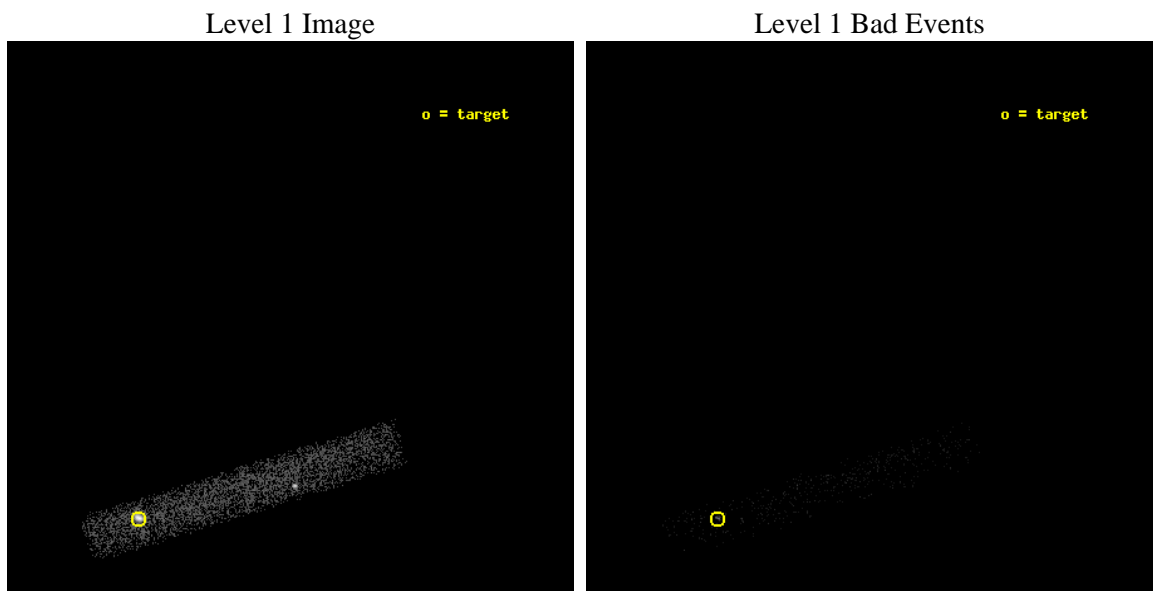
seq_num	700018	Sequence number
obs_id	443	Observation id
title	STUDIES OF RADIO JETS AND THE NARROW LINE REGIONS	Proposal title
observer	Professor Andrew Wilson	Principal investigator
object	PICTOR A	Source name
dtcycle	0	
cycle	P	events from which exps? Prim/Second/Both
ra_targ	79.957083	Observer's specified target RA [deg]
dec_targ	-45.779167	Observer's specified target Dec [deg]
ra_nom	79.862575636775	Nominal RA [deg]
dec_nom	-45.695758337405	Nominal Dec [deg]
roll_nom	162.9037278466	Nominal Roll [deg]
revision	6	Processing version of data
ontime	5577.6000831127	Sum of GTIs [s]
liveltime	5058.5888655113	Livetime [s]
ontime7	5577.6000831127	Sum of GTIs [s]
l2events	8503	Number of level 2 events



2 OBI

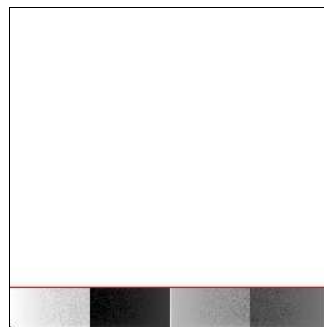
2.1 OBI

2.1.1 Images



2.1.2 Bias

Chip 7



2.1.3 Parameters

obi_num	0	Obi number	sched_exp_time	4902.052000	[s] Scheduled observation exposure time
ascdsver	8.4.5	Processing system revision	ontime	5577.6000831127	Sum of GTIs [s]
caldsver	4.5.2	 	ontime7	5577.6000831127	Sum of GTIs [s]
date	2012-10-25T16:42:03	Date and time of file creation	l1events	12054	Number of level 1 events
revision	6	Processing version of data			

2.1.4 Events

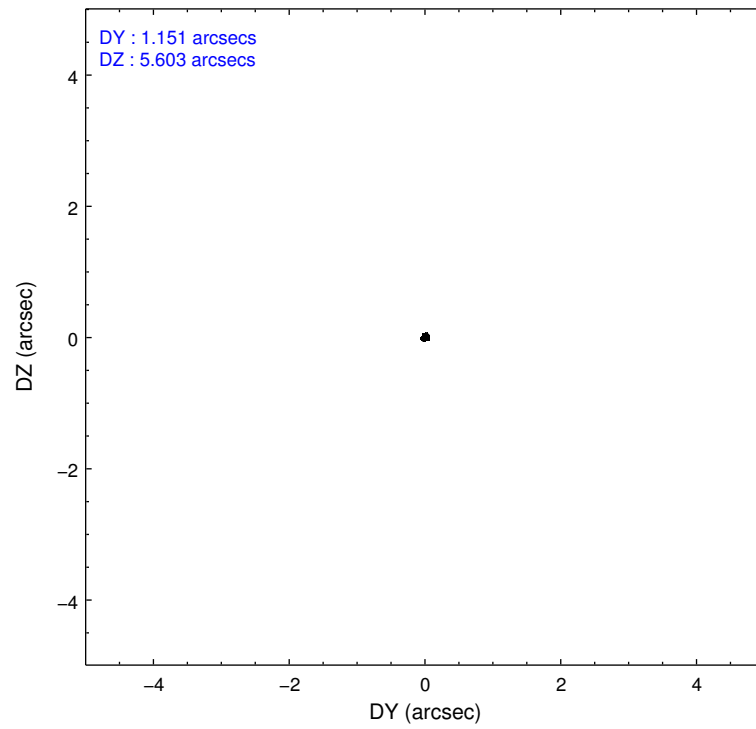
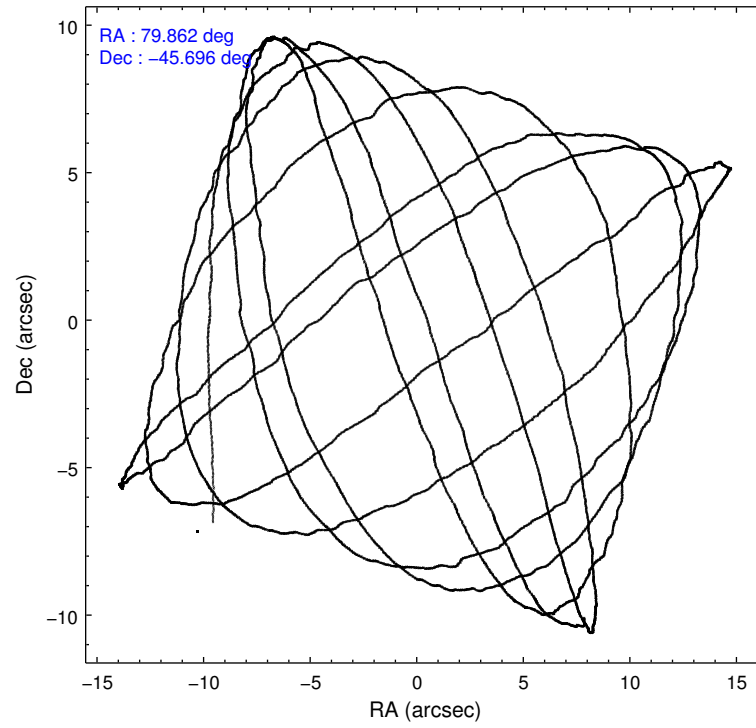
	ccd 7
level 1 events	12054
rejected events	3425
rejected %	28%

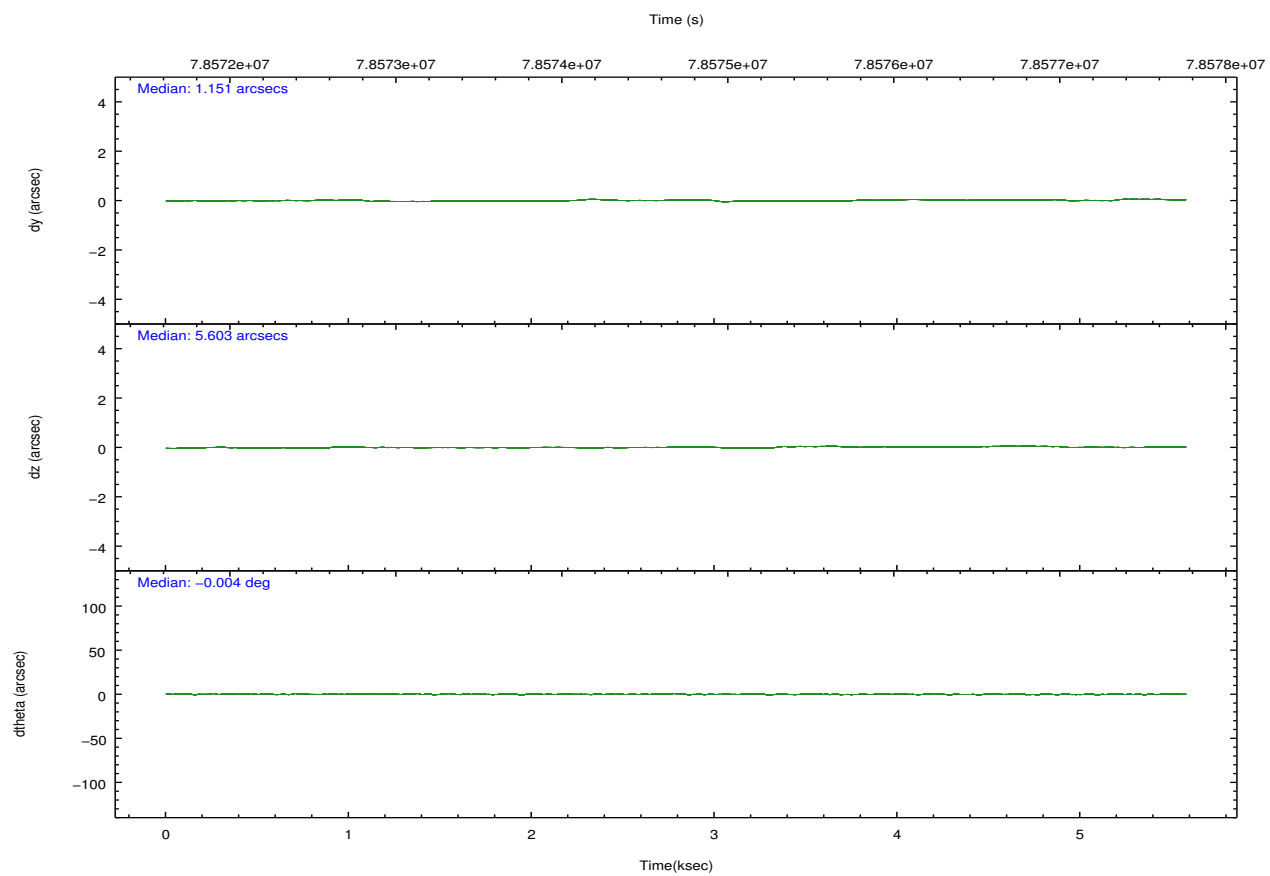
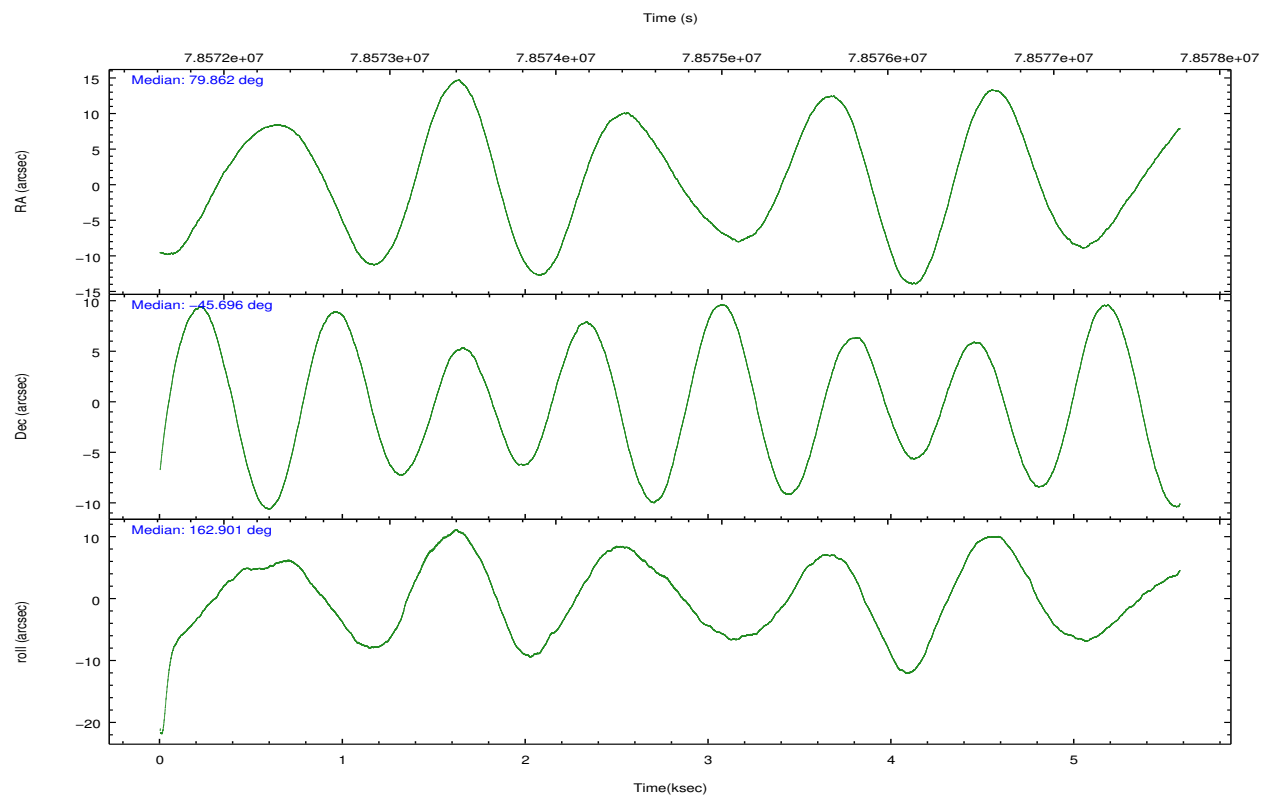
	ccd 7
grade 0 events	2083
	17%
grade 1 events	13
	0%
grade 2 events	2059
	17%
grade 3 events	1061
	8%
grade 4 events	1075
	8%
grade 5 events	543
	4%
grade 6 events	2553
	21%
grade 7 events	2667
	22%

2.2 Compared Parameters

Parameter	Planned	Actual	Parameter	Planned	Actual
Instrument	ACIS	ACIS	Obspar format version number	7	7
Detector	ACIS-7	ACIS-7	Obspar file type	PREDICTED	ACTUAL
Grating	NONE	NONE	Obspar update status	NONE	UPDATED
Data mode	VFAINT	VFAINT	Number of optional ACIS chips dropped	0	0
Observation mode	POINTING	POINTING	On-chip summing requested	N	N
[deg] Pointing RA	79.900862	79.86257563677518	Subarray requested	CUSTOM	1/8
[deg] Pointing Dec	-45.689540	-45.69575833740519	Subarray start row	1	1
[deg] Pointing Roll	162.774533	162.9037278466006	Subarray row count	128	128
[mm] SIM focus pos	-0.684267	-0.6828225247311905	Alternating exposures requested	N	N
[mm] SIM defocus	0	0.001444936568705701	[s] Primary exposure time	0.000000	0.4
[mm] SIM translation stage pos	-190.132523	-190.1400660498719			
[mm] SIM translation stage offset	0	0.00754346686406393			
[s] Observation start time (MET)	78572581.184000	78571377.15643799			
Observation start date	2000-06-28T09:41:57	2000-06-28T09:22:57			
[s] Observation end time (MET)	78577483.184000	78577792.63167401			
Observation end date	2000-06-28T11:03:39	2000-06-28T11:09:52			
Read mode	TIMED	TIMED			

2.3 Aspect



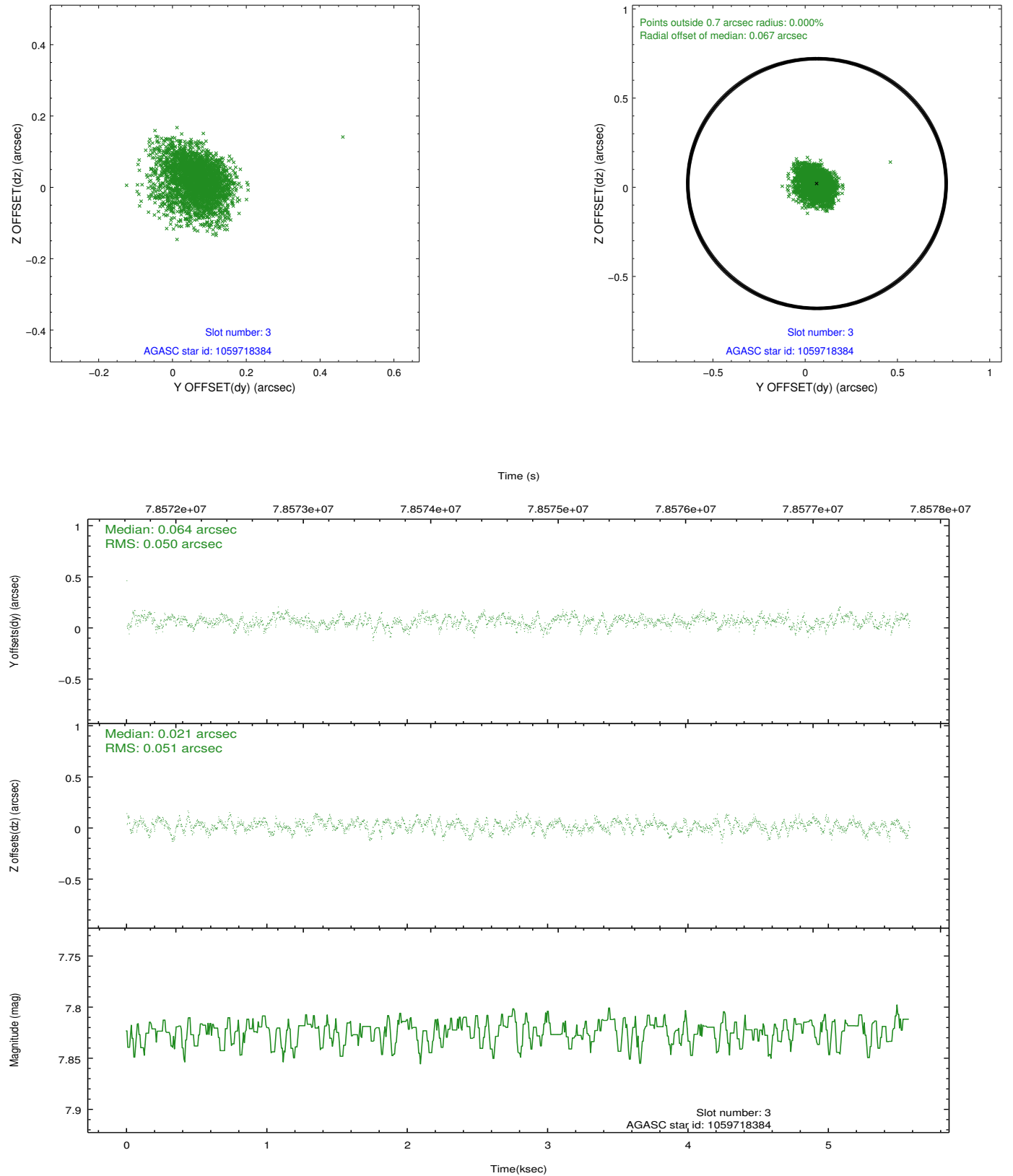


Slot Statistics

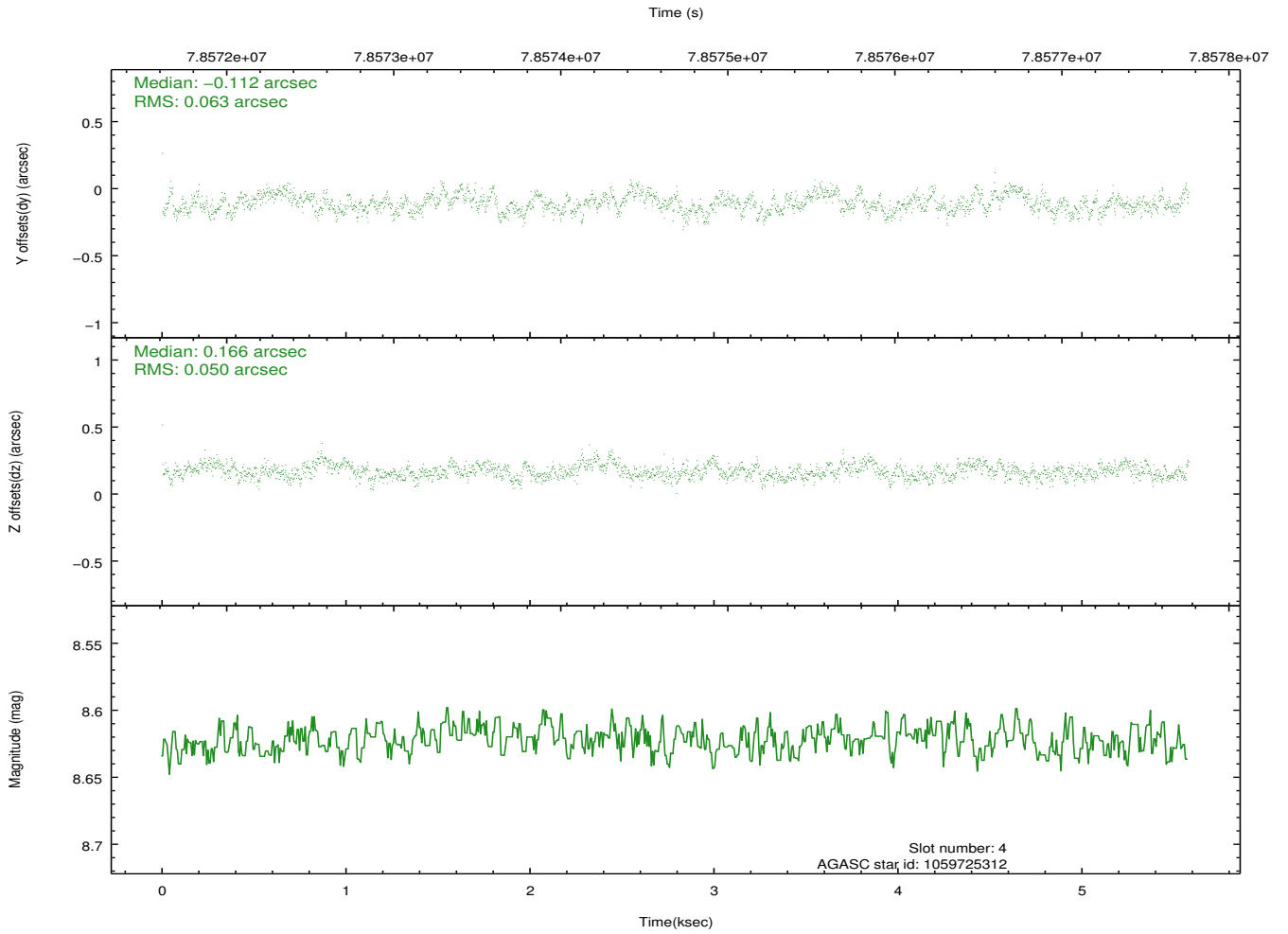
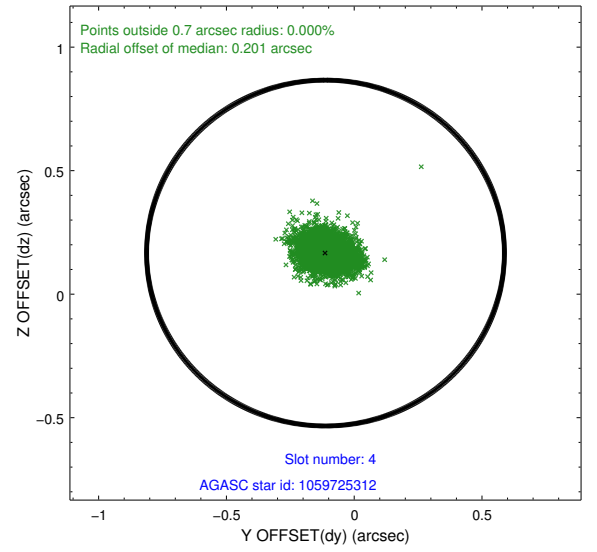
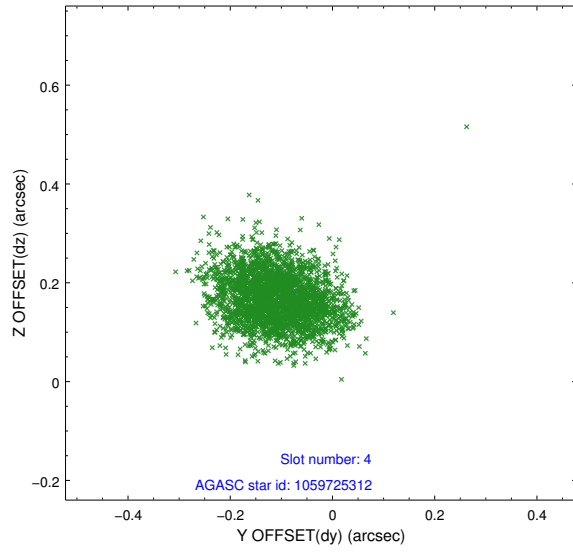
slot	status	id	mag	n_pts	med_dy	med_dz	dr1	dr2	ra	dec	mean_y	mean_z
0	FID	ACIS-S-2	7.11	1361	-0.036	0.012	0.007	0.011	0.000000	0.000000	-753.77	-1726.73
1	FID	ACIS-S-4	7.21	1361	-0.011	0.014	0.006	0.011	0.000000	0.000000	2159.04	180.67
2	FID	ACIS-S-5	7.23	1359	0.016	-0.017	0.006	0.010	0.000000	0.000000	-1805.18	175.51
3	GUIDE	1059718384	7.82	2722	0.064	0.021	0.076	0.125	80.663676	-45.411103	-1547.35	-1519.89
4	GUIDE	1059725312	8.62	2719	-0.112	0.166	0.085	0.138	79.636160	-45.090752	1279.83	-1859.25
5	OMITTED		0.00	0	0.000	0.000	0.000	0.000	0.000000	0.000000	0.00	0.00
6	GUIDE	1059722336	9.40	2722	-0.055	-0.085	0.083	0.139	79.112656	-45.685912	1894.44	582.97
7	GUIDE	1059720952	9.29	2719	0.101	-0.103	0.116	0.183	80.539931	-46.279907	-2149.60	1565.00

2.4 Star Slots

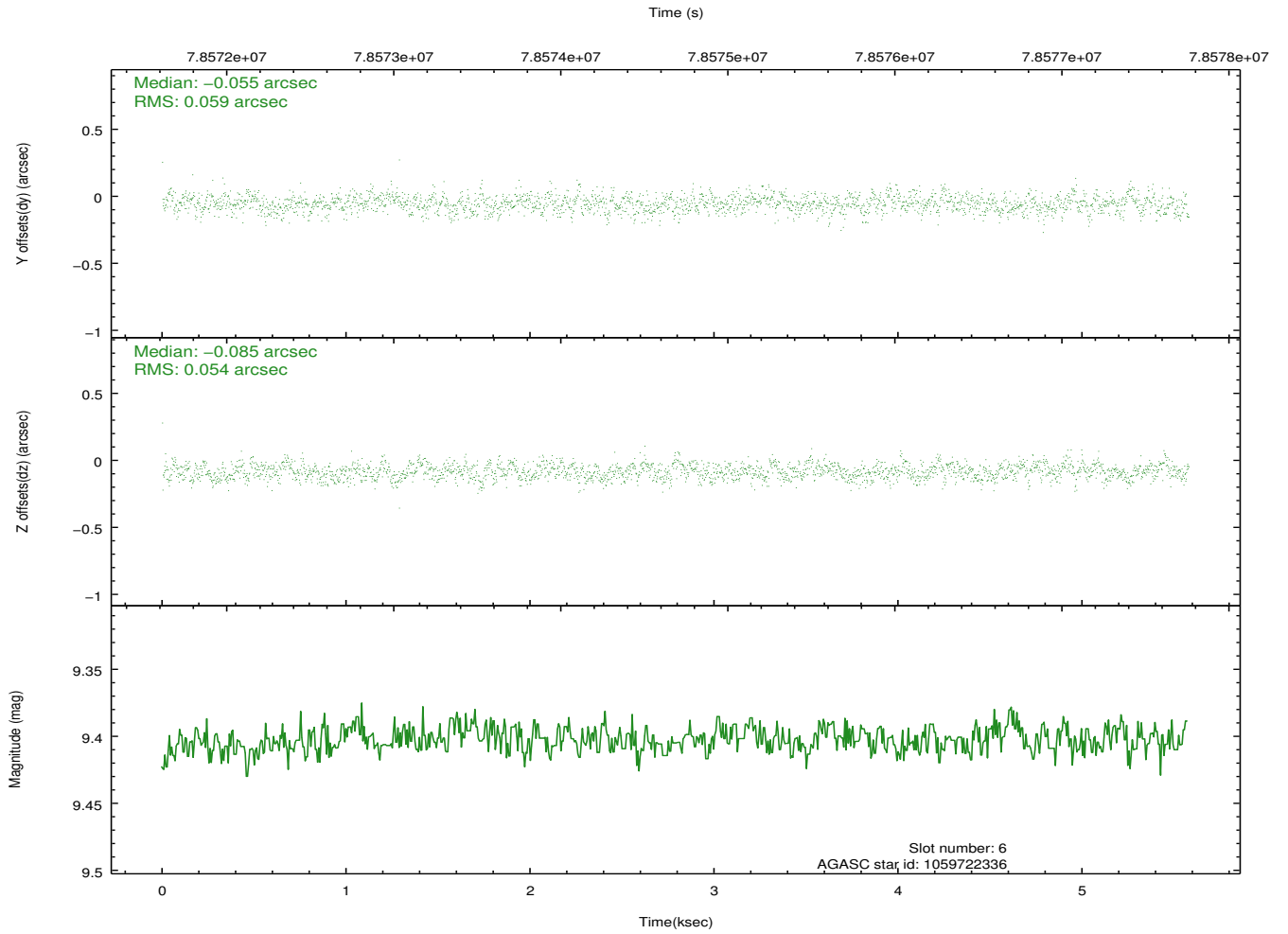
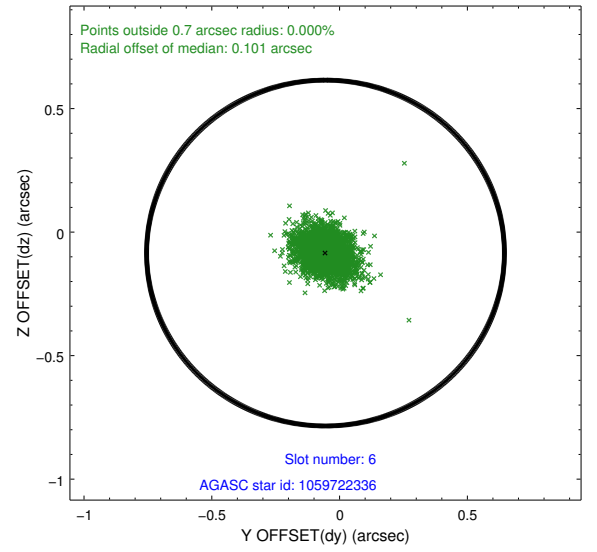
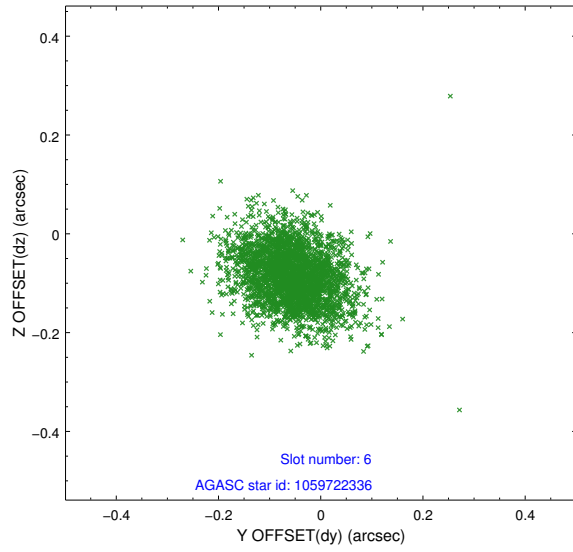
2.4.1 Slot 3



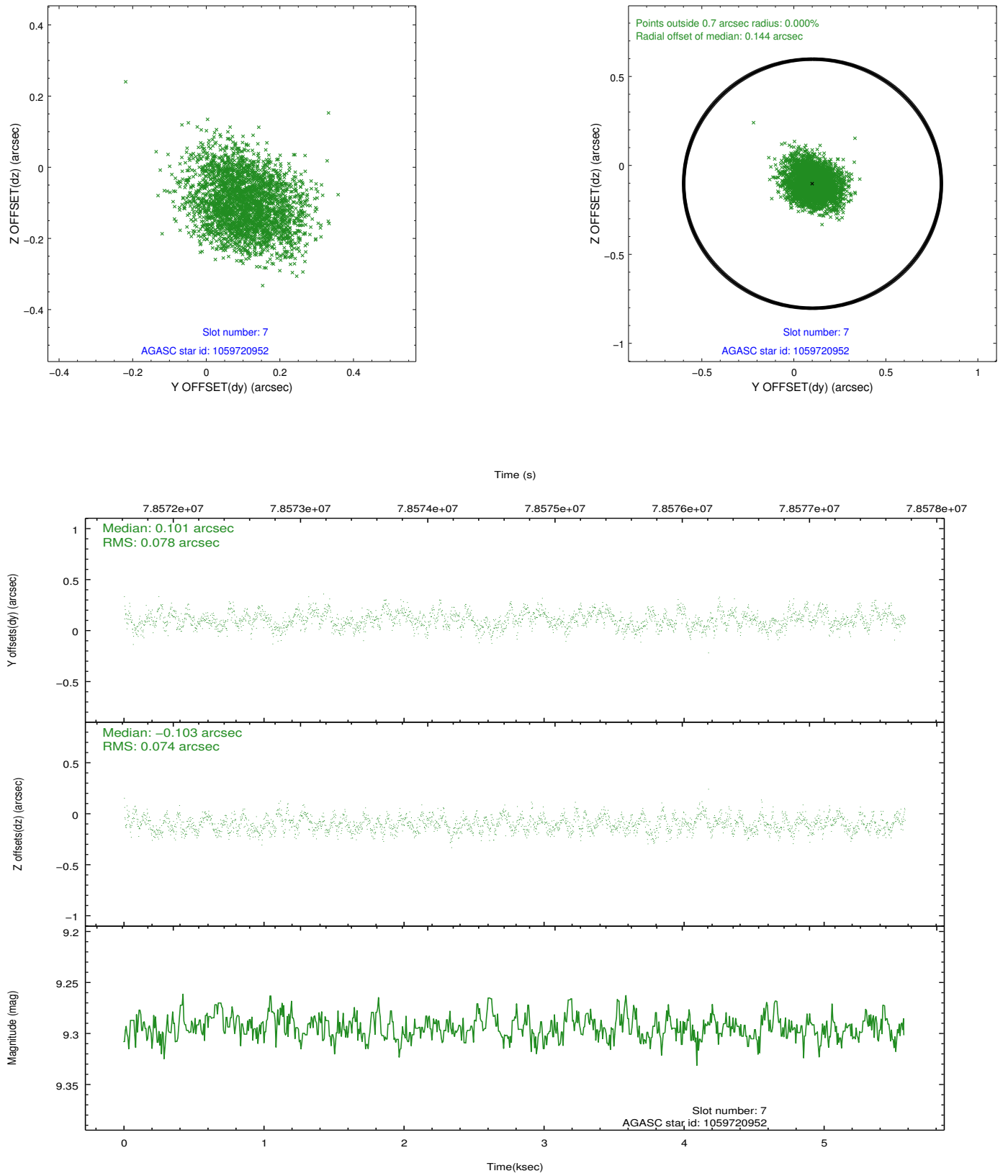
2.4.2 Slot 4



2.4.3 Slot 6

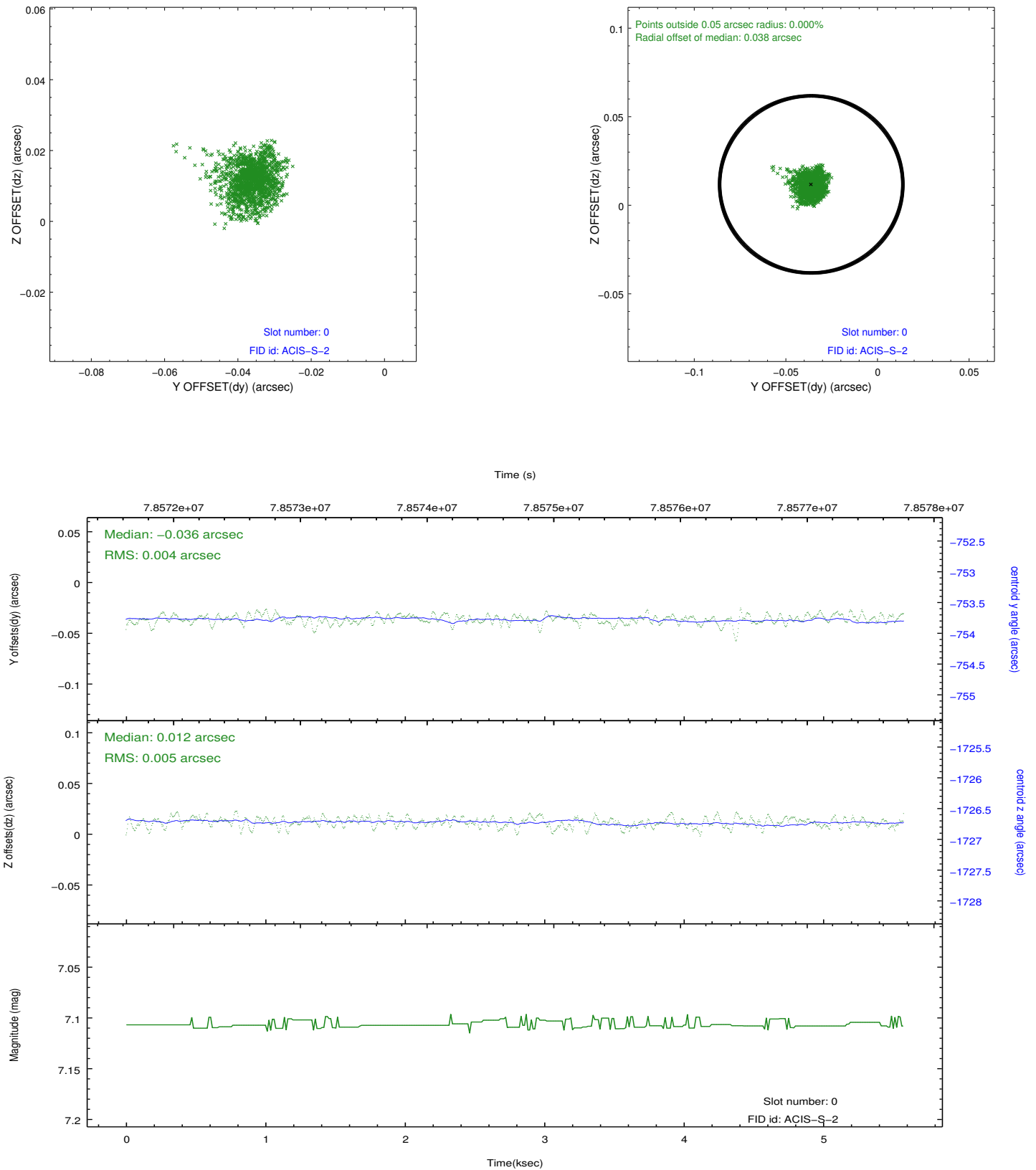


2.4.4 Slot 7

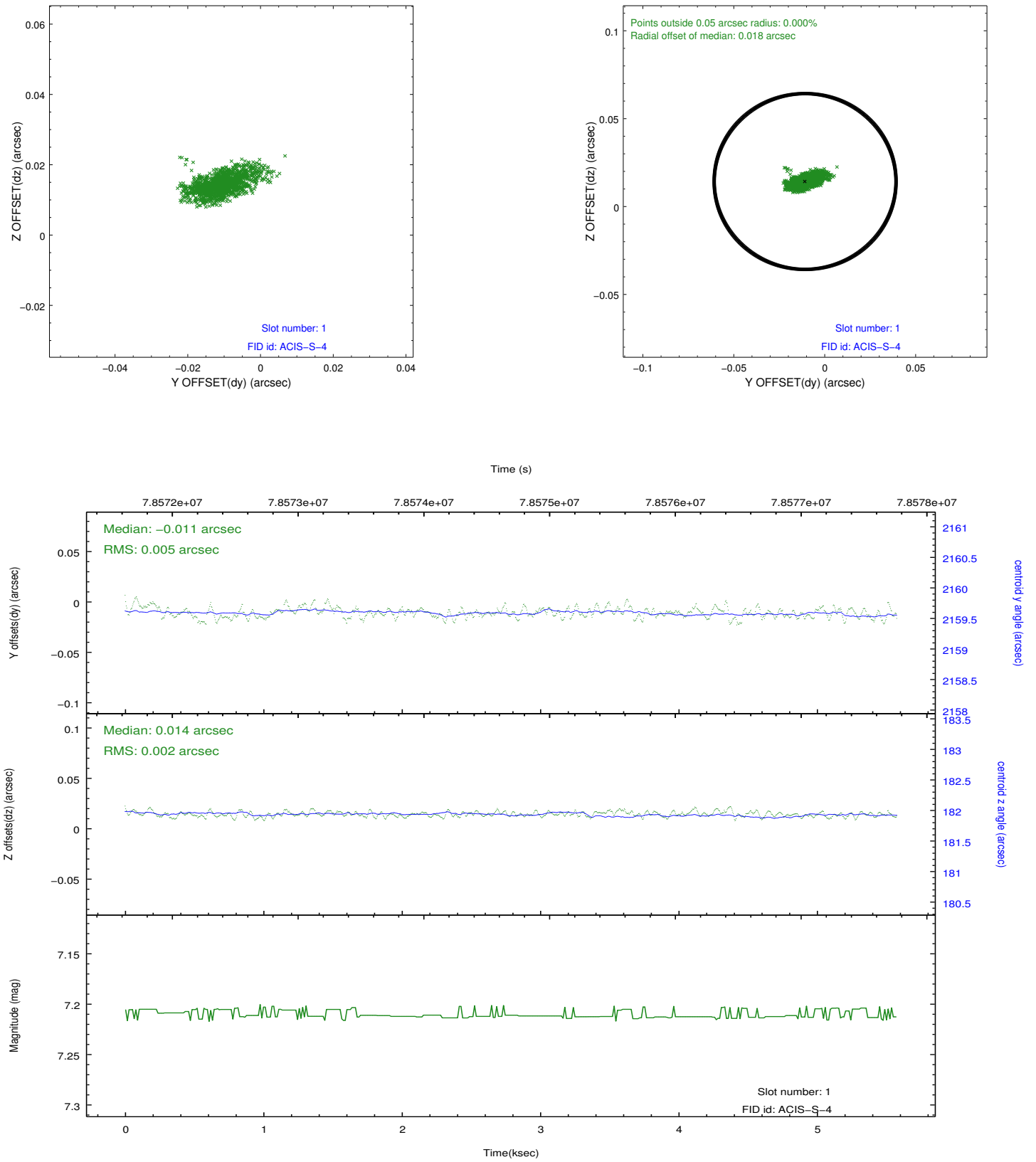


2.5 FID Slots

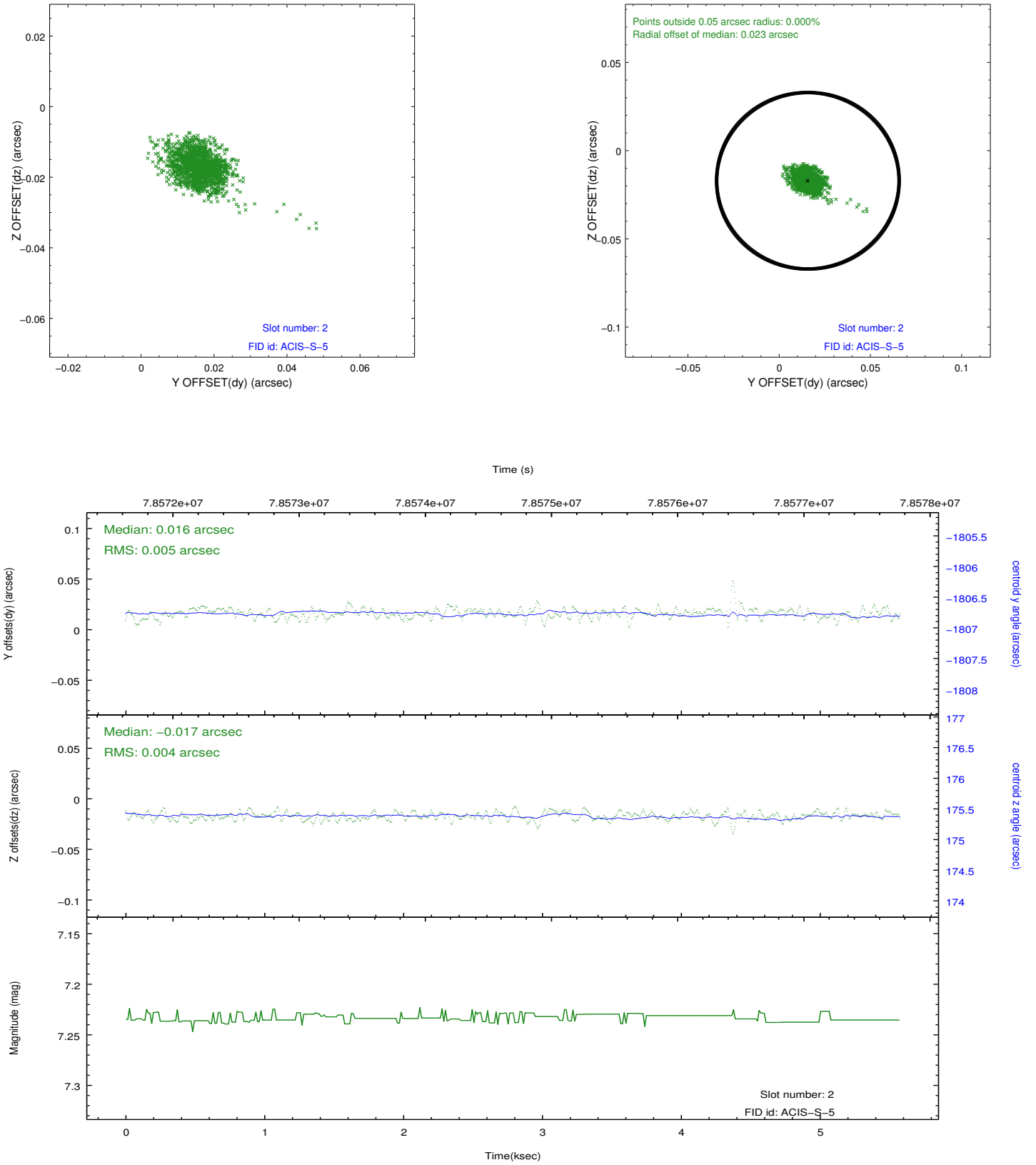
2.5.1 Slot 0



2.5.2 Slot 1



2.5.3 Slot 2



A Summary

A.1 Status

V&V Scientist	Joy Nichols
V&V Date (YYYY-MM-DD)	2012.11.06
V&V Edition	1
V&V Disposition and Status	OK
V&V Charge Time	5.577

A.2 Comments

Source is off-axis and FSP reflects this. The guide star in slot 5 was removed from the aspect solution due to poor data quality. The aspect solution is improved by the removal of this guide star from the solution.